

United States Department of the Interior  
National Park Service

National Register of Historic Places  
Registration Form

This form is for use in nominating or requesting determinations for individual properties and districts. See instructions in *How to Complete the National Register of Historic Places Registration Form* (National Register Bulletin 16A). Complete each item by marking "x" in the appropriate box or by entering the information requested. If an item does not apply to the property being documented, enter "N/A" for "not applicable." For functions, architectural classification, materials, and areas of significance, enter only categories and subcategories from the instructions. Place additional entries and narrative items on continuation sheets (NPS Form 10-900a). Use a typewriter, word processor, or computer, to complete all items.

1. Name of Property

historic name U.S. 62 Bridge over Crooked Creek

other names/site number MR0054

2. Location

street & number U.S. Highway 62

not for publication

city or town Pyatt

vicinity

state Arkansas code AR county Marion code 089 zip code 72672

3. State/Federal Agency Certification

As the designated authority under the National Historic Preservation Act, as amended, I hereby certify that this  nomination  request for determination of eligibility meets the documentation standards for registering properties in the National Register of Historic Places and meets the procedural and professional requirements set for in 36 CFR Part 60. In my opinion, the property  meets  does not meet the National Register criteria. I recommend that this property be considered significant  nationally  statewide  locally. (See continuation sheet for additional comments.)

Carolyn H. Gator  
Signature of certifying official/Title

4-27-91  
Date

Arkansas Historic Preservation Program  
State or Federal agency and bureau

In my opinion, the property  meets  does not meet the National Register criteria. ( See Continuation sheet for additional comments.)

\_\_\_\_\_  
Signature of certifying official/Title

\_\_\_\_\_  
Date

\_\_\_\_\_  
State or Federal agency and bureau

4. National Park Service Certification

I hereby certify that the property is:

- entered in the National Register.  
 See continuation sheet
- determined eligible for the National Register.  
 See continuation sheet
- determined not eligible for the National Register.
- removed from the National Register.
- other, (explain:) \_\_\_\_\_

\_\_\_\_\_  
Signature of the Keeper

\_\_\_\_\_  
Date of Action

\_\_\_\_\_

\_\_\_\_\_

\_\_\_\_\_

\_\_\_\_\_

U.S. 62 Bridge over Crooked Creek

Name of Property

Marion Co., Arkansas

County and State

5. Classification

Ownership of Property (Check as many boxes as apply)

- private, public-local, public-State, public-Federal

Category of Property (Check only one box)

- building(s), district, site, structure, object

Number of Resources within Property (Do not include previously listed resources in count.)

Table with columns: Contributing, Noncontributing, buildings, sites, structures, objects, Total. Values: Contributing=1, Noncontributing=0, Total=1.

Name of related multiple property listing (Enter "N/A" if property is not part of a multiple property listing.)

Historic Bridges of Arkansas

Number of Contributing resources previously listed in the National Register

N/A

6. Function or Use

Historic Functions (Enter categories from instructions)

TRANSPORTATION: Road related (vehicular)

Current Functions (Enter categories from instructions)

TRANSPORTATION: Road related (vehicular)

7. Description

Architectural Classification (Enter categories from instructions)

OTHER: Warren truss with verticals, deck truss bridge

Materials (Enter categories from instructions)

Table with columns: Material, Value. Rows: foundation Concrete, walls Steel, roof N/A, other N/A.

Narrative Description

(Describe the historic and current condition of the property.)

SEE CONTINUATION SHEET.

U.S. 62 Bridge over Crooked Creek  
Name of Property

Marion Co., Arkansas  
County and State

**Statement of Significance**

**Applicable National Register Criteria**  
(Mark "x" in one or more boxes for the criteria qualifying the property for National Register listing.)

- A Property is associated with events that have made a significant contribution to the broad patterns of our history.
- B Property is associated with the lives of persons significant in our past.
- C Property embodies the distinctive characteristics of a type, period, or method of construction or represents the work of a master, or possesses high artistic values, or represents a significant and distinguishable entity whose components lack individual distinction.
- D Property has yielded, or is likely to yield, information important in prehistory or history.

**Level of Significance** (local, state, national)  
LOCAL

**Areas of Significance** (Enter categories from instructions)  
ENGINEERING

**Period of Significance**  
1948-1950

**Criteria Considerations**  
(Mark "x" in all the boxes that apply.)

Property is:

- A owned by a religious institution or used for religious purposes.
- B removed from its original location.
- C moved from its original location.
- D a cemetery.
- E a reconstructed building, object, or structure.
- F a commemorative property
- G less than 50 years of age or achieved significance within the past 50 years.

**Significant Dates**  
1948

**Significant Person** (Complete if Criterion B is marked)  
N/A

**Cultural Affiliation** (Complete if Criterion D is marked)  
N/A

**Architect/Builder**  
BUILDER: Pioneer Construction Company, Inc.

**Narrative Statement of Significance**  
(Explain the significance of the property.)

SEE CONTINUATION SHEET.

U.S. 62 Bridge over Crooked Creek  
Name of Property

Marion Co., Arkansas  
County and State

9. Major Bibliographical References

**Bibliography**

(Cite the books, articles, and other sources used in preparing this form.)

Apple, M. M. Memo 29 December 1947. Memo in possession of Arkansas Highway Department (Record Room – Job 9221)

Arkansas State Highway and Transportation Department (Environmental Division). *Arkansas Historic Bridge Review and Evaluation: Volume I (December 1987) and Volume II (April 1996)*. Little Rock, AR: no publisher.

Arkansas Highway Department. "OASIS INQUIRY – Bridge 02469." (database), 2000.

Arkansas Historic Preservation Program. "Bridges to the Past." (brochure), 1999.

Comp, Allan, and Donald Jackson. "Technical Leaflet 95: Bridge Truss Types: A Guide to Dating and Identifying." American Association for State and Local History, 1977.

Oliver, F.R. To Mr. J. G. Baker. 6 January 1948. Letter in possession of the Arkansas Highway Department (Record Room – Job 9221).

\_\_\_\_\_. To W.W. Lass. 13 February 1947. Letter in possession of the Arkansas Highway Department (Record Room – Job 9221).

Wayne, J. F. To F. R. Oliver. 8 July 1946. Letter in possession of the Arkansas Highway Department (Record Room – Job 9221).

**Previous documentation on file (NPS):**

- preliminary determination of individual listing (36 CFR 67) has been requested
- previously listed in the National Register
- Previously determined eligible by the National Register
- designated a National Historic Landmark
- recorded by Historic American Buildings Survey # \_\_\_\_\_
- recorded by Historic American Engineering Record # \_\_\_\_\_

**Primary location of additional data:**

- State Historic Preservation Office
- Other State Agency
- Federal Agency
- Local Government
- University
- Other

Name of repository: \_\_\_\_\_

10. Geographical Data

Acreage of Property Less than two acres

**UTM References**

(Place additional UTM references on a continuation sheet.)

1	<u>15</u>	<u>514870</u>	<u>4011040</u>
	Zone	Easting	Northing
	_____	_____	_____

3	_____	_____	_____
	Zone	Easting	Northing
4	_____	_____	_____

See continuation sheet

U.S. 62 Bridge over Crooked Creek  
Name of Property

Marion Co., Arkansas  
County and State

**Verbal Boundary Description**  
(Describe the boundaries of the property.)

Section – 31, Township – 17W, Range 19N

Beginning at a point 30 feet southeast and 30 feet northeast of the east corner of the bridge proceed southwest approximately 92 feet crossing U.S. Highway 62 (at this point you will be approximately 30 feet southeast and 30 feet southwest from the south corner of the bridge). Turning northwest, proceed approximately 531 feet, running parallel to the southwest side of the bridge, while crossing Crooked Creek. Turning northeast proceed approximately 92 feet crossing U.S. Highway 62 to a point approximately 30 feet northwest and northeast of the north corner of the bridge. Turning southeast proceed approximately 531 feet, running parallel to the northeast side of the bridge, while crossing Crooked Creek and returning to the point of origin.

**Boundary Justification**  
(Explain why the boundaries were selected.)

This boundary has been established to isolate the bridge, abutments, and piers, all of which are historically associated with this resource and maintain their integrity. Also included in the boundary is the immediate setting extending 30 feet southeast, southwest, northwest, and northeast of the body of the bridge.

---

**11. Form Prepared By**

---

name/title Kara Mills, National Register/Survey Coordinator  
organization Arkansas Historic Preservation Program date \_\_\_\_\_  
street & number 1500 Tower Building, 323 Center Street telephone (501) 324-9880  
city or town Little Rock state AR zip code 72201

**Paperwork Reduction Act Statement:** This information is being collected for applications to the National Register of Historic Places to nominate properties for listing or determine eligibility for listing, to list properties, and to amend existing listing. Response to this request is required to obtain a benefit in accordance with the National Historic Preservation Act, as amended (16 U.S.C. 470 *et seq.*)

**Estimated Burden Statement:** Public reporting burden for this form is estimated to average 18.1 hours per response including time for reviewing instructions, gathering and maintaining data, and completing and reviewing the form. Direct comments regarding this burden estimate or any aspect of this form to the Chief, Administrative Services Division, National Park Service, P. O. Box 37127, Washington, DC 20013-7127; and the Office of Management and Budget, Paperwork Reductions Projects (1024-0018), Washington, DC 20303.

United States Department of the Interior  
National Park Service

## National Register of Historic Places Continuation Sheet

Section number 7 Page 1

---

### SUMMARY

Located on U.S. Highway 62 at the point where it crosses Crooked Creek, the U.S. Highway 62 Bridge is a steel Warren truss with verticals, deck truss bridge. This bridge is comprised of three sections and spans a total length of 471 feet. The U.S. 62 Bridge is being nominated to the National Register of Historic Places under Criterion C as a good example of a deck truss type of bridge and an intact example of a Warren truss with verticals.

### ELABORATION

The structure, which is a steel, Warren truss with verticals, deck truss bridge, spans Crooked Creek. Because it is of deck truss construction, this bridge carries its traffic load level with the top chords. It consists of three spans, each measuring approximately 136 feet, with a total structure length of 471 feet. The travel surface is 26 feet wide with an overall width of 32 feet and the deck surface is concrete over the steel truss. The piers that support the bridge are made of concrete and the steel Warren truss, with verticals, runs the entire length of the north and south sides of the bridge. The Warren truss was designed to allow the diagonals to carry both compressive and tensile forces, with the verticals serving as bracing for the triangular web system. No structural alterations have been made to the bridge to alter its integrity.

### Integrity

Its location remains rural, as its setting remains pristine; it exemplifies its original historic design and materials. No changes have been made to alter the historic workmanship or detract from its feeling or association as it is still used as a bridge for vehicular travel.

United States Department of the Interior  
National Park Service

## National Register of Historic Places Continuation Sheet

Section number 8 Page 1

### SUMMARY

Constructed in 1948, the U.S. 62 Bridge over Crooked Creek is being nominated to the National Register of Historic Places under Criterion C because it embodies the design characteristics of a Warren truss with verticals, deck truss bridge and is the best example of this design in the surrounding area. This bridge is significant in the area of engineering and is being submitted under the multiple property listing "Historic Bridges of Arkansas" and under the associated historic context "Post WWII Era."

### ELABORATION

According to Allan Comp, Senior Historian and Donald Jackson, Civil Engineer (HAER), the Warren truss design dates back to the 1840s. During the late part of the nineteenth century different styles of trusses were developed but it was the Pratt and the Warren designs that gradually demonstrated their versatility, durability, and economic desirability. Because of the success of both bridge designs, nearly all bridge trusses in the twentieth century were constructed using variations of these forms; and so the U.S. 62 Bridge over the Crooked Creek is a Warren truss with verticals, deck truss bridge.

In July of 1946, a notice to contractors that proposals for constructing the U.S. 62 Bridge over Crooked Creek was placed in the *Arkansas Democrat*, *Arkansas Gazette*, and *The Construction News*. However, by February of 1947, only one company – the East Arkansas Construction Company – had submitted a bid for \$164,087.00. The State Highway Commission rejected this bid and once again began the process of searching for a contractor. Nearly a year later in January of 1948, the Pioneer Construction Company Inc. from Kansas City, Missouri, was awarded the job for building the U.S. 62 Bridge over Crooked Creek after submitting a bid for \$150,596.84. At the time of completion, the bridge was constructed for a total cost of \$153,627.30.

### Significance

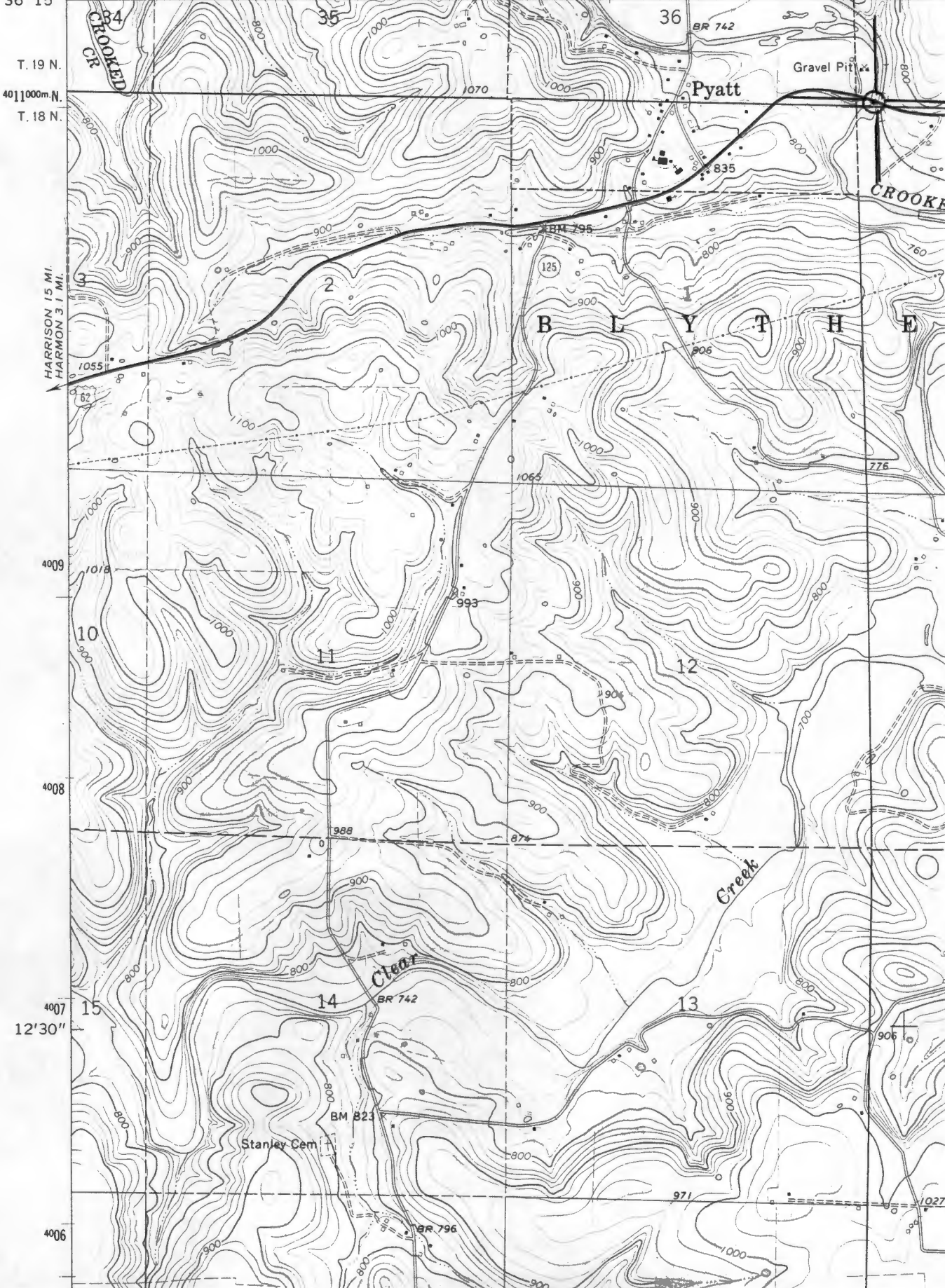
Because it is the best example of a Warren truss design in this area, the U.S. 62 Bridge is being nominated to the National Register of Historic Places with **local significance** under **Criterion C**. It is being submitted under the **multiple property listing** "Historic Bridges of Arkansas" in conjunction with the associated **historic context** "Post WWII Era."

U.S. Vlt bridge over Crooked Creek  
Pyatt vic., Marion Co., AR  
UTM References: 15/514870/4011040

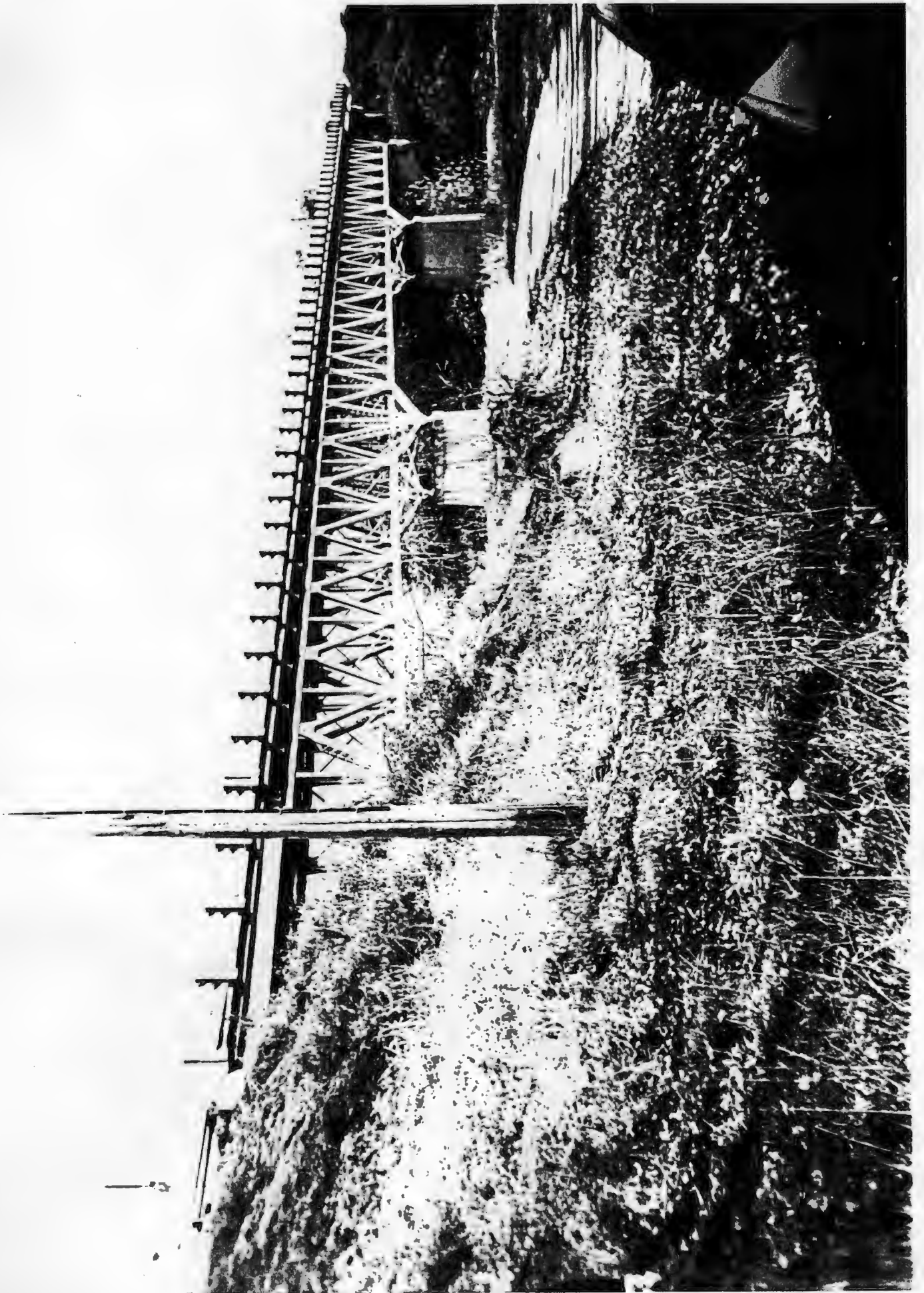
UNITED STATES  
DEPARTMENT OF THE INTERIOR  
GEOLOGICAL SURVEY

7455 N SW  
(ZINC)

92°52'30" 512000m.E 513 514 R. 18 W. 50' R. 17  
36°15'









1-3

**BROOKED CREEK**  
POLICE JURISDICTION OF ILL.  
ILLINOIS  
STATE HIGHWAY COMMISSION  
FEDERAL JUDICIAL AGENCY  
PUBLIC ROAD ADMINISTRATION  
1948  
ILLINOIS

