

United States Department of the Interior  
National Park Service

NATIONAL REGISTER OF HISTORIC PLACES  
REGISTRATION FORM

1. Name of Property

historic name: Pyatt School Building

other name/site number: MR0021

2. Location

street & number: County Road 12

not for publication: N/A

city/town: Pyatt

vicinity: N/A

state: AR

county: Marion

code: AR 089

zip code: 72672

3. Classification

Ownership of Property: Public-local

Category of Property: Building

Number of Resources within Property:

Contributing	Noncontributing	
<u>1</u>	_____	buildings
_____	_____	sites
_____	_____	structures
_____	_____	objects
<u>1</u>	<u>0</u>	Total

Number of contributing resources previously listed in the National Register: N/A

Name of related multiple property listing: Public Schools in the Arkansas Ozarks, 1920-1940

=====

**4. State/Federal Agency Certification**

=====

As the designated authority under the National Historic Preservation Act of 1986, as amended, I hereby certify that this X nomination \_\_\_\_\_ request for determination of eligibility meets the documentation standards for registering properties in the National Register of Historic Places and meets the procedural and professional requirements set forth in 36 CFR Part 60. In my opinion, the property X meets \_\_\_\_\_ does not meet the National Register Criteria. \_\_\_\_\_ See continuation sheet.

Cathryn H. Byrd \_\_\_\_\_ 7-16-92  
Signature of certifying official Date

Arkansas Historic Preservation Program  
State or Federal agency and bureau

In my opinion, the property \_\_\_\_\_ meets \_\_\_\_\_ does not meet the National Register criteria. \_\_\_\_\_ See continuation sheet.

\_\_\_\_\_  
Signature of commenting or other official Date

\_\_\_\_\_  
State or Federal agency and bureau

=====

**5. National Park Service Certification**

=====

I, hereby certify that this property is:

\_\_\_\_\_ entered in the National Register \_\_\_\_\_  
\_\_\_\_\_ See continuation sheet.

\_\_\_\_\_ determined eligible for the \_\_\_\_\_  
National Register \_\_\_\_\_  
\_\_\_\_\_ See continuation sheet.

\_\_\_\_\_ determined not eligible for the \_\_\_\_\_  
National Register \_\_\_\_\_

\_\_\_\_\_ removed from the National Register \_\_\_\_\_

\_\_\_\_\_ other (explain): \_\_\_\_\_

\_\_\_\_\_  
Signature of Keeper Date  
of Action

=====

**6. Function or Use**

=====

Historic: EDUCATION Sub: School

\_\_\_\_\_  
\_\_\_\_\_  
Current: EDUCATION Sub: School

\_\_\_\_\_  
\_\_\_\_\_

=====

**7. Description**

=====

Architectural Classification:

LATE 19TH AND EARLY 20TH CENTURY AMERICAN MOVEMENTS  
Colonial Revival

Other Description: Plain Traditional

Materials: foundation Stone roof Asphalt  
walls Stone other N/A

Describe present and historic physical appearance. X See continuation sheet.

=====

**8. Statement of Significance**

=====

Certifying official has considered the significance of this property in relation to other properties: Locally.

Applicable National Register Criteria: A

Criteria Considerations (Exceptions): N/A

Areas of Significance: EDUCATION  
\_\_\_\_\_  
\_\_\_\_\_  
\_\_\_\_\_  
\_\_\_\_\_

Period(s) of Significance: c. 1925-1940

Significant Dates: N/A

Significant Person(s): N/A  
\_\_\_\_\_

Cultural Affiliation: N/A

Architect/Builder: Unknown  
\_\_\_\_\_  
\_\_\_\_\_

State significance of property, and justify criteria, criteria considerations, and areas and periods of significance noted above. X See continuation sheet.

=====

**9. Major Bibliographical References**

=====

See "Public Schools in the Arkansas Ozarks, 1920-1940" Multiple Property Form, Section H.

\_\_\_ See continuation sheet.

Previous documentation on file (NPS):

- \_ preliminary determination of individual listing (36 CFR 67) has been requested.
- \_ previously listed in the National Register
- \_ previously determined eligible by the National Register
- \_ designated a National Historic Landmark
- \_ recorded by Historic American Buildings Survey # \_\_\_\_\_
- \_ recorded by Historic American Engineering Record # \_\_\_\_\_

Primary Location of Additional Data:

- X State historic preservation office
- \_ Other state agency
- \_ Federal agency
- \_ Local government
- \_ University
- \_ Other -- Specify Repository: \_\_\_\_\_

=====

**10. Geographical Data**

=====

Acreage of Property: Less than one

UTM References: Zone Easting Northing      Zone Easting Northing

A	<u>15</u>	<u>513920</u>	<u>4010800</u>	B	___	___	___
C	___	___	___	D	___	___	___

\_\_\_ See continuation sheet.

Verbal Boundary Description: \_\_\_ See continuation sheet.

Beginning at a point formed by the intersection of a line running along the eastern edge of County Road 12 with a perpendicular line running parallel with the building's southern elevation and located 50 feet to the south thereof, proceed easterly along said line for a distance of approximately 200 feet to its intersection with a perpendicular line running parallel to the building's eastern elevation; thence proceed northerly along said line for a distance of approximately 200 feet to its intersection with a line running parallel to the building's northern elevation; thence proceed westerly along said line for a distance of approximately 200 feet to its intersection with a perpendicular line running along the eastern edge of County Road 12; thence proceed southerly along said line for a distance of approximately 200 feet to the point of beginning.

Boundary Justification: \_\_\_ See continuation sheet.

This boundary includes both the historic resource and all the surrounding property known to have been historically associated therewith that retains its integrity.

=====

**11. Form Prepared By**

=====

Name/Title: Kenneth Story, National Register Coordinator

Organization: Arkansas Historic Preservation Program Date: July 15, 1992

Street & Number: 225 E. Markham, Suite 300 Telephone: (501) 324-9346

City or Town: Little Rock State: AR ZIP: 72201

**United States Department of the Interior  
National Park Service**

**National Register of Historic Places  
Continuation Sheet**

Section number   7   Page   1  

---

### Summary

The Pyatt School Building is a rectangular-shaped, single-story building constructed circa 1925 in the Plain Traditional style of architecture with some Colonial Revival influence. The composition-shingled hipped roof is pierced by two interior brick chimneys located at each end of the center ridge. Craftsman-style exposed rafters accentuate the eaves. The structural cut-stone walls feature "grapevine" mortaring and rest upon a continuous stone foundation.

### Elaboration

The western or front elevation is comprised of a recessed, central porch flanked on each side by a set of six nine-over-nine, double-hung windows. Four slender, unfluted columns with simple round capitals and bases rest upon a concrete deck and support the pedimented gable roof, which projects somewhat.

The northern elevation contains a centrally placed raised doorway with a wood staircase. The lower portion has been filled and a window placed in the upper portion. A shed roof covers the filled-in lower half and is apparently used to store stove wood. Three six-over-six, double-hung windows to the east likewise have a shed roof built underneath, which is approximately a foot lower than the doorway shed roof. At the eastern corner, a single-leaf door with six-pane transom and a concrete lintel is accessed by nine concrete steps.

The eastern elevation is fenestrated by a six-over-six, double-hung window near each corner. Two sets of six, nine-over-nine, double-hung windows are placed in between. A raised doorway, which is accessed by six concrete steps, is positioned between the southern six-over-six window and the southernmost set of nine-over-nine windows.

The southern elevation is lighted by three six-over-six, double-hung windows that are asymmetrically arranged in the eastern half of the elevation. The building is still used for classrooms.

United States Department of the Interior  
National Park Service

## National Register of Historic Places Continuation Sheet

Section number 8 Page 1

---

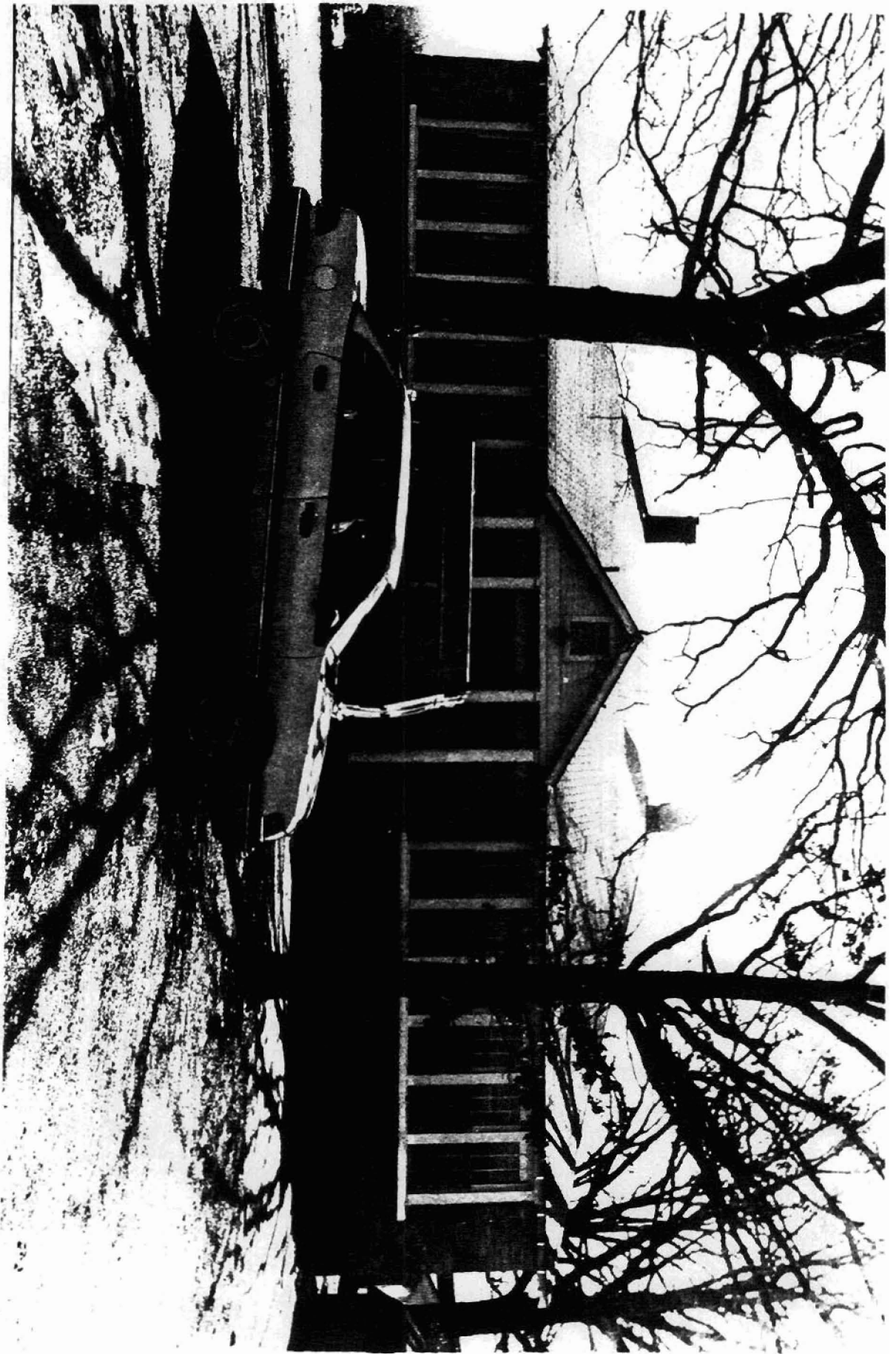
### Pyatt School Building

Marion County experienced a zinc and lead mining boom in the 1910's, due in part to the military demands of World War I. Following the war, the mining industry in northern Arkansas underwent a swift decline as prices fell and production costs soared. The population of Marion County dropped quickly as discouraged miners and their families sought work elsewhere. Local farmers who had supplied various goods and services to the mining industry adjusted to the economic dislocations and returned to subsistence farming. The Pyatt School was built in 1925 just as the small community of Pyatt had begun to emerge from these dislocations.<sup>1</sup>

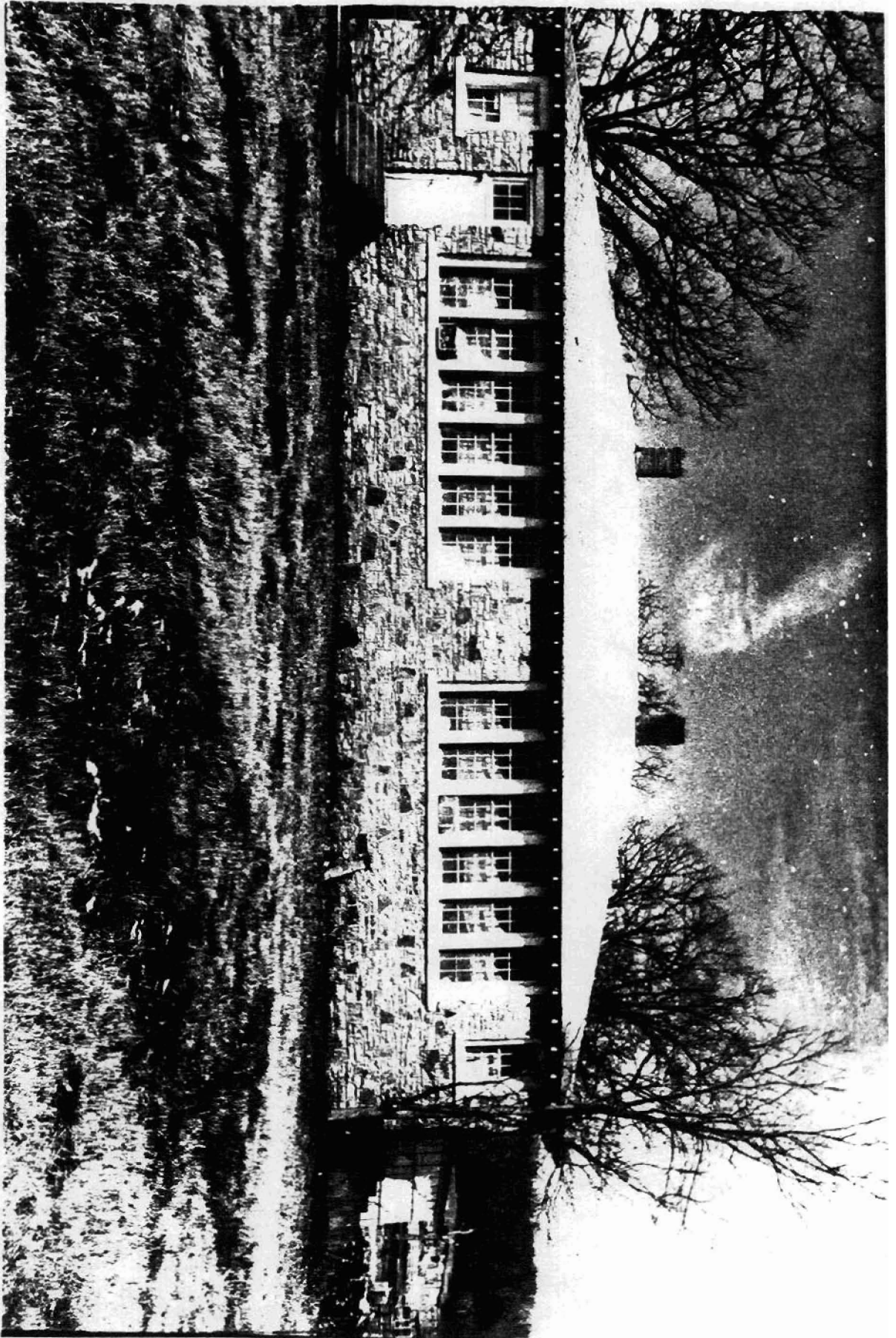
The Pyatt School Building, constructed during the period covered by the historic context *The Evolution of the Public School System in the Arkansas Ozarks, 1920-1940*, is a representative example of a large stone school building constructed for a rural school district. Its use during this period as a local school building clearly identifies it with this historic context and with this property type. It is significant locally under Criterion A through its direct associations with the history of the evolution of the public school system in the Ozark Mountain region of the state during this period.

---

<sup>1</sup>Dwight Pitcaithley, "Zinc and Lead Mining Along the Buffalo River," Arkansas Historical Quarterly, Vol. XXXVII, No. 4 (Winter 1978), 304.

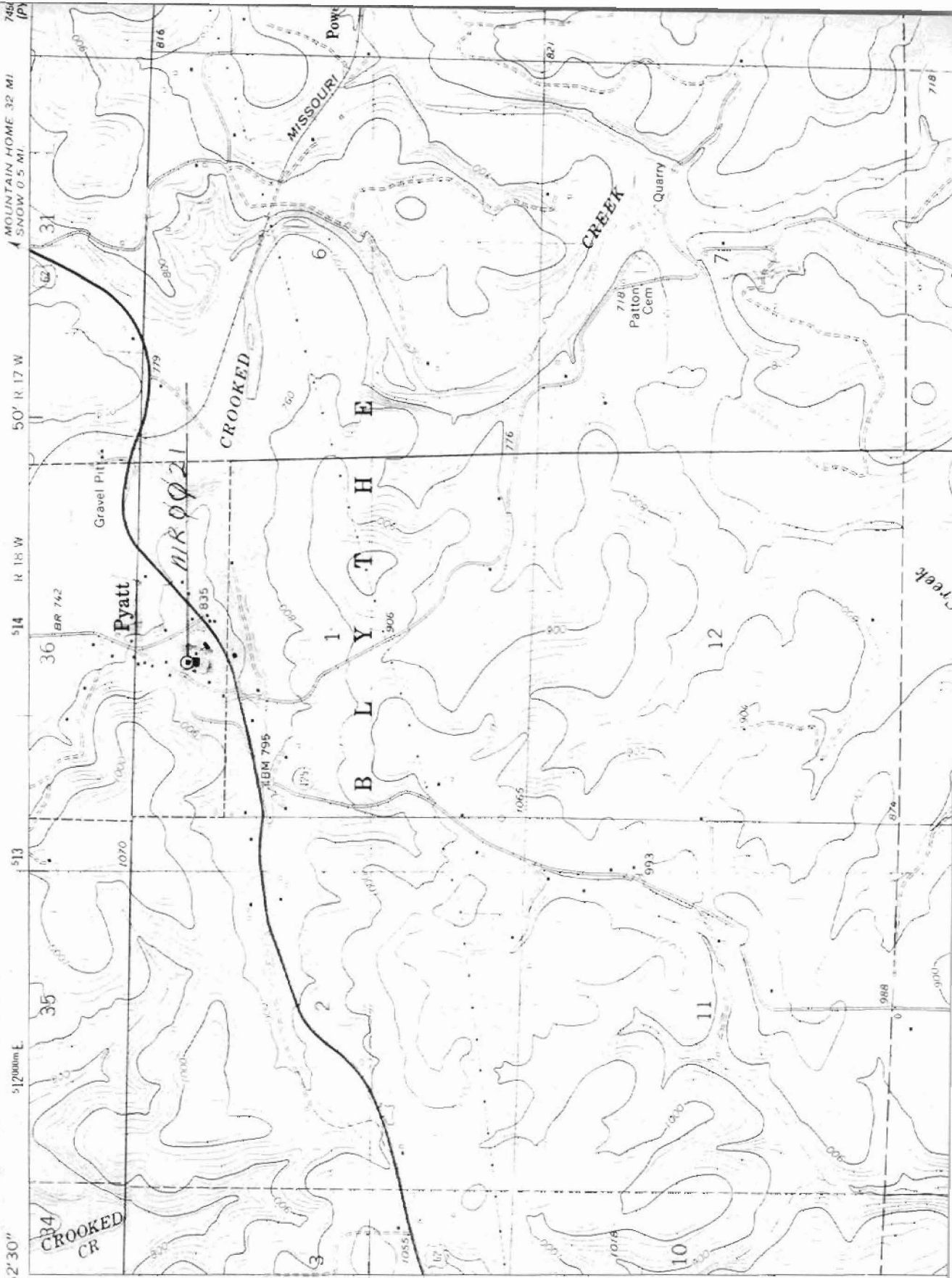






UNITED STATES  
DEPARTMENT OF THE INTERIOR  
GEOLOGICAL SURVEY

7456 IV, SW  
(ZINCI)



92° 52' 30"  
36° 15'

T. 19 N  
4011000m N  
T. 18 N

512000m E  
513  
514

50' R 17 W  
50' R 18 W

7456 IV, SW  
(ZINCI)

36° 15'

92° 52' 30"

36° 15'

7456 IV, SW  
(ZINCI)

36° 15'

92° 52' 30"

36° 15'

7456 IV, SW  
(ZINCI)

36° 15'

92° 52' 30"

36° 15'

7456 IV, SW  
(ZINCI)

36° 15'

92° 52' 30"

36° 15'

7456 IV, SW  
(ZINCI)

36° 15'

92° 52' 30"

36° 15'

7456 IV, SW  
(ZINCI)

36° 15'

92° 52' 30"

36° 15'

7456 IV, SW  
(ZINCI)

36° 15'

92° 52' 30"

36° 15'

7456 IV, SW  
(ZINCI)

36° 15'

92° 52' 30"

36° 15'

7456 IV, SW  
(ZINCI)

36° 15'

92° 52' 30"

36° 15'

7456 IV, SW  
(ZINCI)

36° 15'

92° 52' 30"

36° 15'

7456 IV, SW  
(ZINCI)

36° 15'

92° 52' 30"

36° 15'

7456 IV, SW  
(ZINCI)

36° 15'

92° 52' 30"

36° 15'

7456 IV, SW  
(ZINCI)

36° 15'

92° 52' 30"

36° 15'

7456 IV, SW  
(ZINCI)

36° 15'

92° 52' 30"

36° 15'

7456 IV, SW  
(ZINCI)

36° 15'

92° 52' 30"

36° 15'

7456 IV, SW  
(ZINCI)

36° 15'

92° 52' 30"

36° 15'

7456 IV, SW  
(ZINCI)

36° 15'

92° 52' 30"

36° 15'

7456 IV, SW  
(ZINCI)

36° 15'

92° 52' 30"

36° 15'

7456 IV, SW  
(ZINCI)

36° 15'

92° 52' 30"

36° 15'

7456 IV, SW  
(ZINCI)

36° 15'

*Handwritten notes:*  
Pyatt  
Gravel Pit  
CROOKED CR  
BLAYTH CREEK  
MISSOURI CREEK  
Patton Cem  
Quarry  
HARRISON 15 M  
SNOW 31  
51513920/4010800