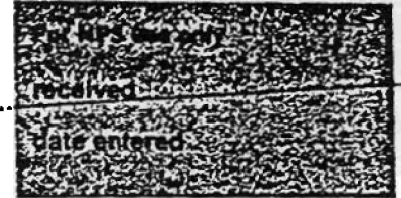


National Register of Historic Places
Inventory—Nomination Form



Continuation sheet 57 Item number 1,2,4,6, & 10 Page 1

INDIVIDUAL DATA SHEET

General Description

Code: MO-072

Congressional District: First

Name: Gazzola and Vaccaro Building

Current Owner: Ray Jones

Address: 131-133 West Cypress
Brinkley, Arkansas

Address: 133 West Cypress
Brinkley, Arkansas 72021

County: Monroe

Architectural Information

Architectural Firm: Charles Thompson

Date of Construction: 1916

Stylistic Influence: Prairie Style

Original Use: Commercial
Store and Office Bldg.

Present Use: Commercial

Geographical Information

UTM Reference: 15 665140/3861840

Acreage: Less than one

Verbal Boundary Description: Original Town of Brinkley
West 1/4 of West 1/4 of Lots 1, 2, 3, Block 33

Condition

Excellent
 Good
 Fair

Deteriorated
 Ruins
 Unexposed

Unaltered
 Altered

National Register of Historic Places
Inventory—Nomination Form

NPS
Received
Date entered

Continuation sheet 58

Item number 7 & 8

Page 2

Code: MO-072 (133 W. Cypress, Brinkley, AR)

Physical Description

This two-story commercial building constructed of common bond brick is located on a corner site in Brinkley's downtown area. Its broad, horizontal, simple massing, the interlocking vertical and horizontal rhythmic elements and a sensitive exploitation of materials and textures reflect a marked Prairie Style influence. The rectangular structure with a flat roof features a parapet outlined with stone coping which rises to a broad curve centered in the facade. Below, a group of seven plate glass sash windows, the upper panes of which have intersecting border muntins, sets up a strong horizontal rhythm. Rich, decorative brickwork provides the frame for these windows. Introducing a strong vertical rhythm, bricks set in raised panels are set between each window creating a pilaster-like effect, augmented by the use of simple stone bases and capitals. Flemish bond brick panels immediately surround each window. Stone window sills, punctuated by the interspersed bases of the brick pilasters, provide another strong horizontal rhythm. The inset panel of bricks laid in patterns of narrow vertical strips appears above the window. The vertical accents of two inset stone strips at the top and near the ends of the parapet are offset by the horizontal emphasis of the long, narrow stone panel bearing the name of the building. The ground story features large plate glass windows and two entrances

(continued)

Statement of Significance

The Gazzola and Vaccaro Building in Brinkley, Arkansas was designed by Charles L. Thompson in 1916. Located in the main business district of the eastern Arkansas farming town, the building is an imposing landmark in its neighborhood. In its intricate and varied brick detailing, and its effective interplay of horizontal and vertical elements, this design is one of the firm's most successful interpretations of the Prairie Style for a commercial building. It is clearly one of the most sophisticated designs in the downtown of Brinkley, Arkansas. The building appears to have been altered very little from its original design. Although a new cedar-shingled awning has been added, the original drawings indicate plans for an awning of this configuration.

United States Department of the Interior
National Park Service

National Register of Historic Places Inventory—Nomination Form

For NPS use only
received
date entered

Continuation sheet 59

Item number 7

Page 3

Code: MO-072

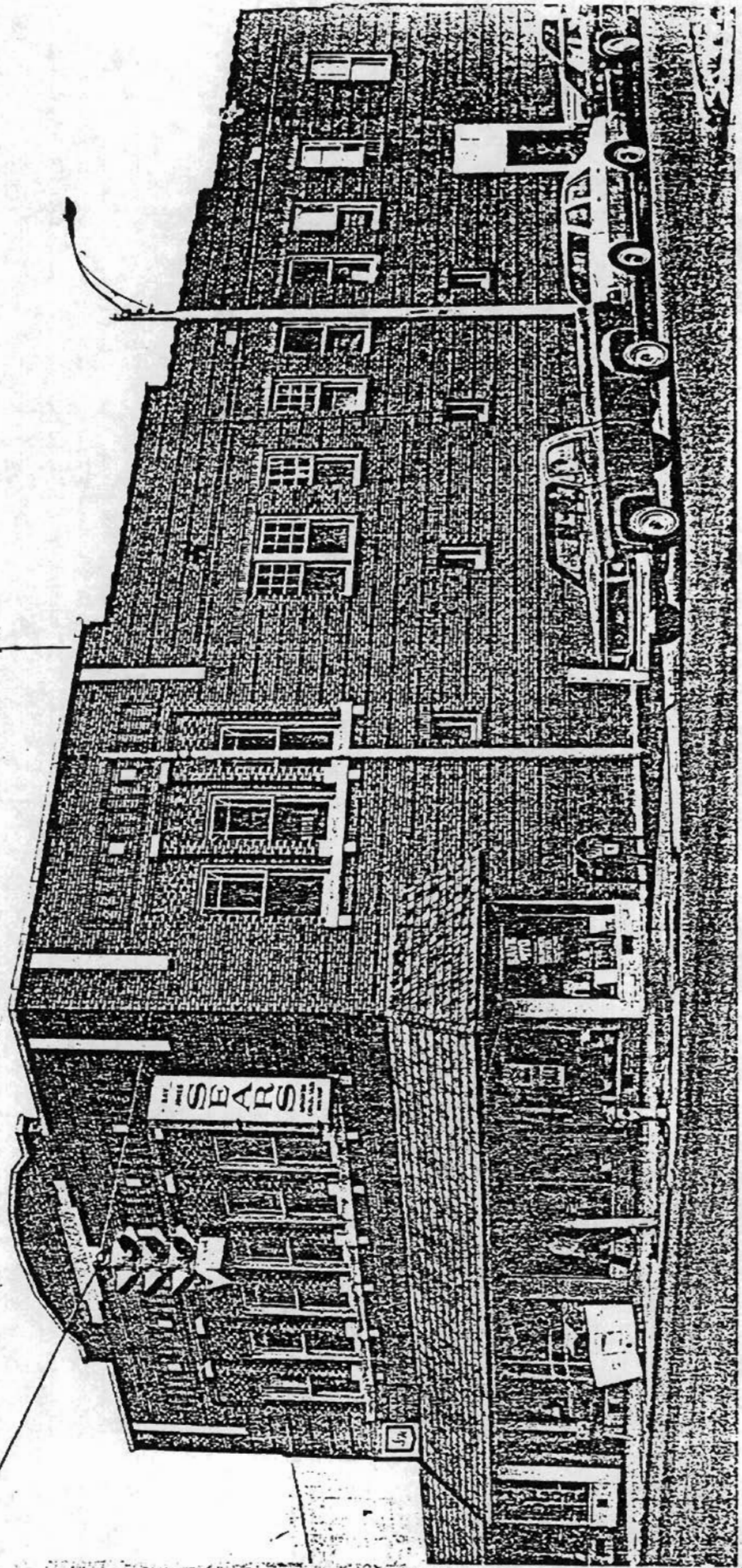
(133 W. Cypress, Brinkley, AR)

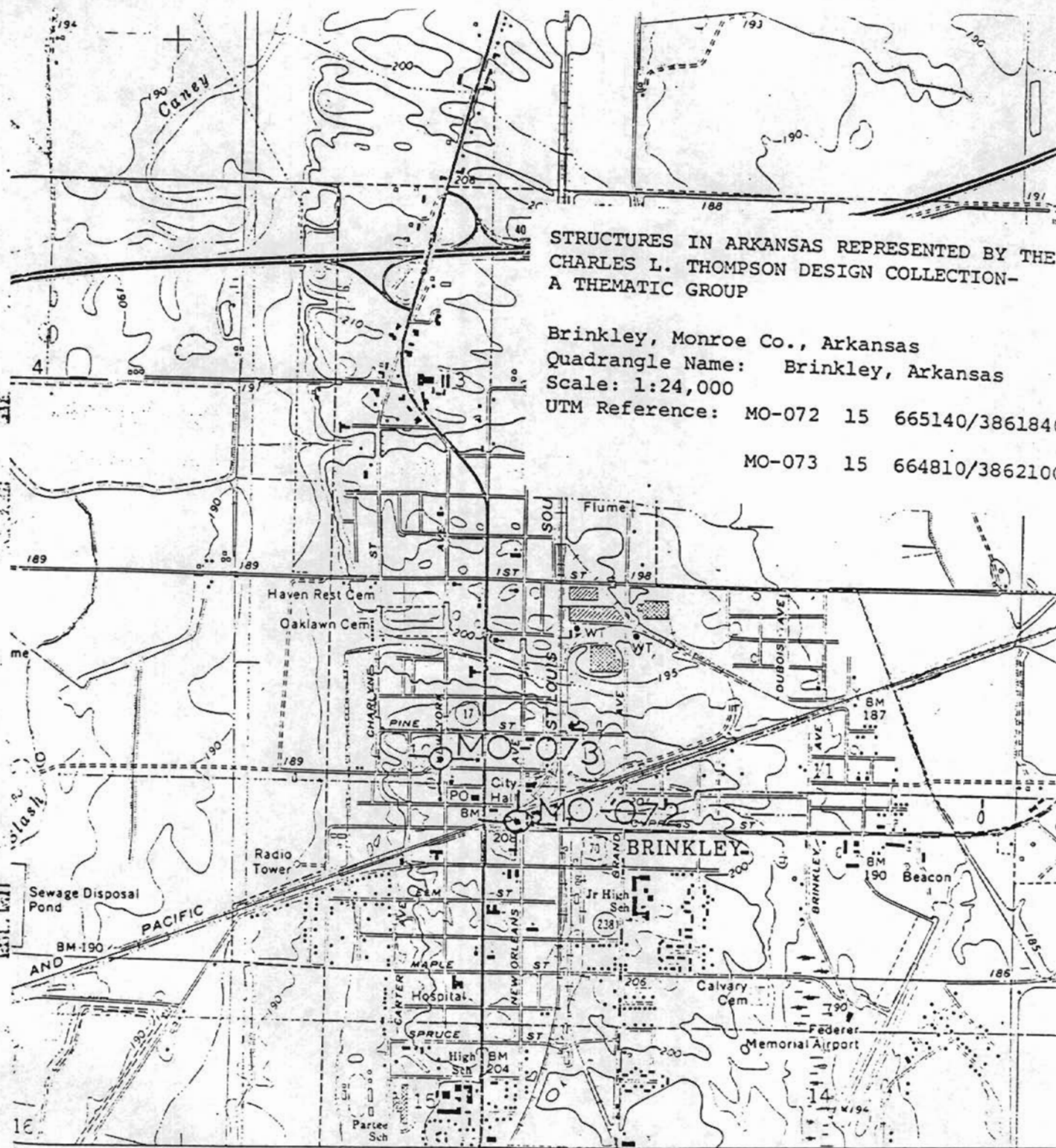
Physical Description

(continued)

of double leaf doors. On the side (south) elevation a three-window unit outlined by the same type brick pilasters and patterns appears on the second floor near the corner. Farther to the rear extends a series of plain sash windows, the originals containing nine-over-one lights. Four small square windows appear on the side on the ground floor.

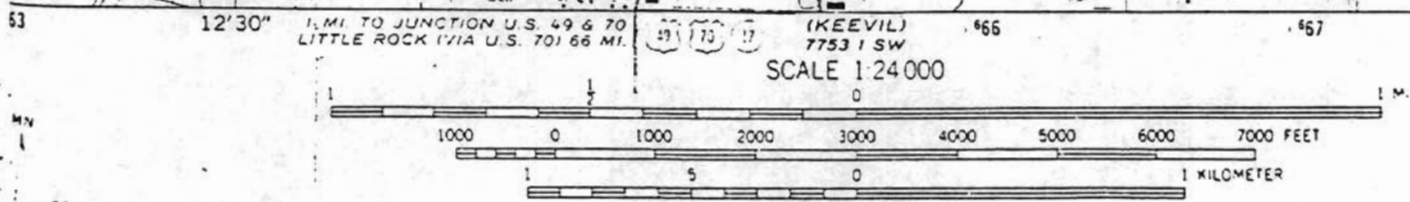
Statement of Significance





STRUCTURES IN ARKANSAS REPRESENTED BY THE CHARLES L. THOMPSON DESIGN COLLECTION-A THEMATIC GROUP

Brinkley, Monroe Co., Arkansas
 Quadrangle Name: Brinkley, Arkansas
 Scale: 1:24,000
 UTM Reference: MO-072 15 665140/3861840
 MO-073 15 664810/3862100



SCALE 1:24000
 CONTOUR INTERVAL 5 FEET
 DATUM IS MEAN SEA LEVEL

MAGNETIC NORTH
 ENTER OF SHEET

THIS MAP COMPLIES WITH NATIONAL MAP ACCURACY STANDARDS
 FOR SALE BY U.S. GEOLOGICAL SURVEY, DENVER, COLORADO 80225, OR WASHINGTON, D. C. 20540
 AND BY THE ARKANSAS GEOLOGICAL COMMISSION, LITTLE ROCK, ARKANSAS 72201
 A FOLDER DESCRIBING TOPOGRAPHIC MAPS AND SYMBOLS IS AVAILABLE ON REQUEST