

CLARENDON MULTIPLE RESOURCE AREA
MONROE COUNTY

ARKANSAS HISTORIC PRESERVATION PROGRAM

Survey Number CL-51 Owner Dottie Ann Bateman
Property Name Jefferies-Cra^btree House Address 208 Main
Address 300 Jefferson Clarendon, AR 72029
City Clarendon, AR
Significant Date/s 1923

ARCHITECTURAL DESCRIPTION

The Jefferies-Cra^btree House was built and designed by Memphis architect, Estes Mann who called it "simplified Colonial in design." The two-story red brick house contains a hip roof with a large dormer window flanked by elliptical attic vents on the front, southern face. The front of the house faces Jefferson Street with a symmetrical facade, containing a central accentuated single door entrance with sidelights and transom. The decorative trellised front entry is supported by two slender columns. The entry is flanked by tripled arranged double-hung, nine-over-one windows on first floor. The west side of the house has an exterior brick chimney and a side porch supported by wide brick columns and covered by a trellised cover similar to the front entry. The east side has the original sleeping porch on a smaller wing with a flat roof; a brick first floor and a frame second floor. The second story front facade has a center double-hung, nine-over-one window with a large window-box underneath flanked by two double-hung windows on either side. The simplified Colonial Revival house with Craftsman elements remains one of the oldest brick residences left in Clarendon, though it is vacant at present.

STATEMENT OF SIGNIFICANCE

The Jefferies-Cra^btree House is significant both for its association to a successful Clarendon family and the introduction of an influential architect in the town. The house was built for Alfred J. Jefferies in 1923 on land given to him by his father, William Ladson Jefferies. The architectural firm of Estes Mann and Gatling out of Memphis designed the \$12,000 dollar house. Estes Mann married one of William Jefferies' daughters, and the Jefferies house was the first of many projects Mann would design in the town of Clarendon, including the Bateman-Griffith house (CL-54) on the same block as the Jefferies-Cra^btree house. Mann also designed primarily private residences throughout Eastern Arkansas and Memphis. Alfred J. Jefferies was active in the Jefferies and Sons mercantile business as well as the Jefferies Lumber Company. Alfred Jefferies also served as postmaster in Clarendon from 1932 to 1947. The family of J. W. Cra^btree, who among other things owned and managed the Metro Theater in Clarendon, lived in the house for many years. It is now vacant, and is owned by Dottie Ann Bateman.

Continued (Page 2)

Survey Number CL-51

Property Name Jefferies-Cra^btree House

Verbal Boundary Description: Ewans Addition
Lots 1, 2, 3, Block H

Acreage: less than one

Quadrangle Name: Clarendon, Ark.

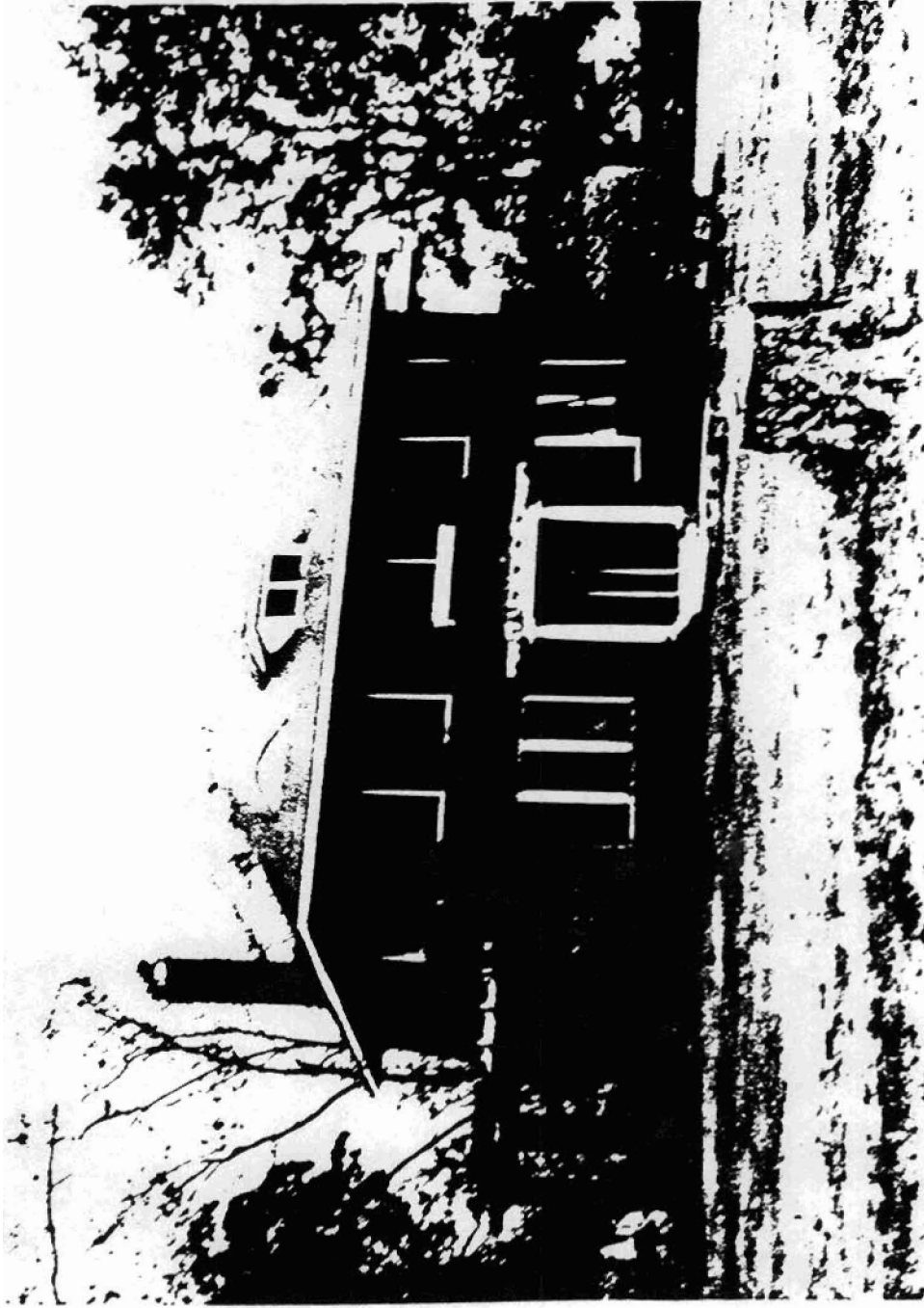
Quadrangle Scale: 1:24000

UTM Reference:

Zone: 15

Easting: 654200

Northing: 3840710



CL-51 Jefferies-Cra^btree House 300 Jefferson
HISTORIC RESOURCES OF CLARENDON
Jeff Lewellen, photographer
Negatives at AHPP
Viewed from the Southwest