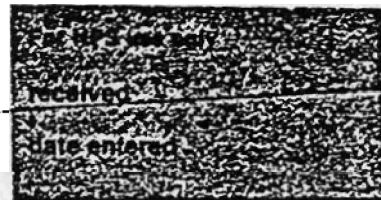


EXP. 12/31/84.

United States Department of the Interior
National Park Service

National Register of Historic Places
Inventory—Nomination Form



Continuation sheet 55

Item number 1, 2, 4, 6, & 10 Page 1

INDIVIDUAL DATA SHEET

General Description

Code: MO-071

Congressional District: First

Name: Merchants and Planters Bank

Current Owner: Merchants and Planters Bank
Perry Lee, President

Address: 214 Madison
Clarendon, Arkansas

Address: 297 Madison
Clarendon, Arkansas -72029

County: Monroe

Architectural Information

Architectural Firm: Thompson and Harding

Date of Construction: 1921

Stylistic Influence: Classical Revival

Original Use: Commercial

Present Use: Vacant

Geographical Information

UTM Reference: 15 654480/3840100

Acreage: Less than one

Verbal Boundary Description: Original Town of Clarendon
Block 7, Lots 9, 10, 11

Condition

Excellent
 Good
 Fair

Deteriorated
 Ruins
 Unexposed

Unaltered
 Altered

United States Department of the Interior
National Park Service

National Register of Historic Places Inventory—Nomination Form

received
date entered

Continuation sheet 56

Item number 7 & 8

Page 2

Code: MO-071

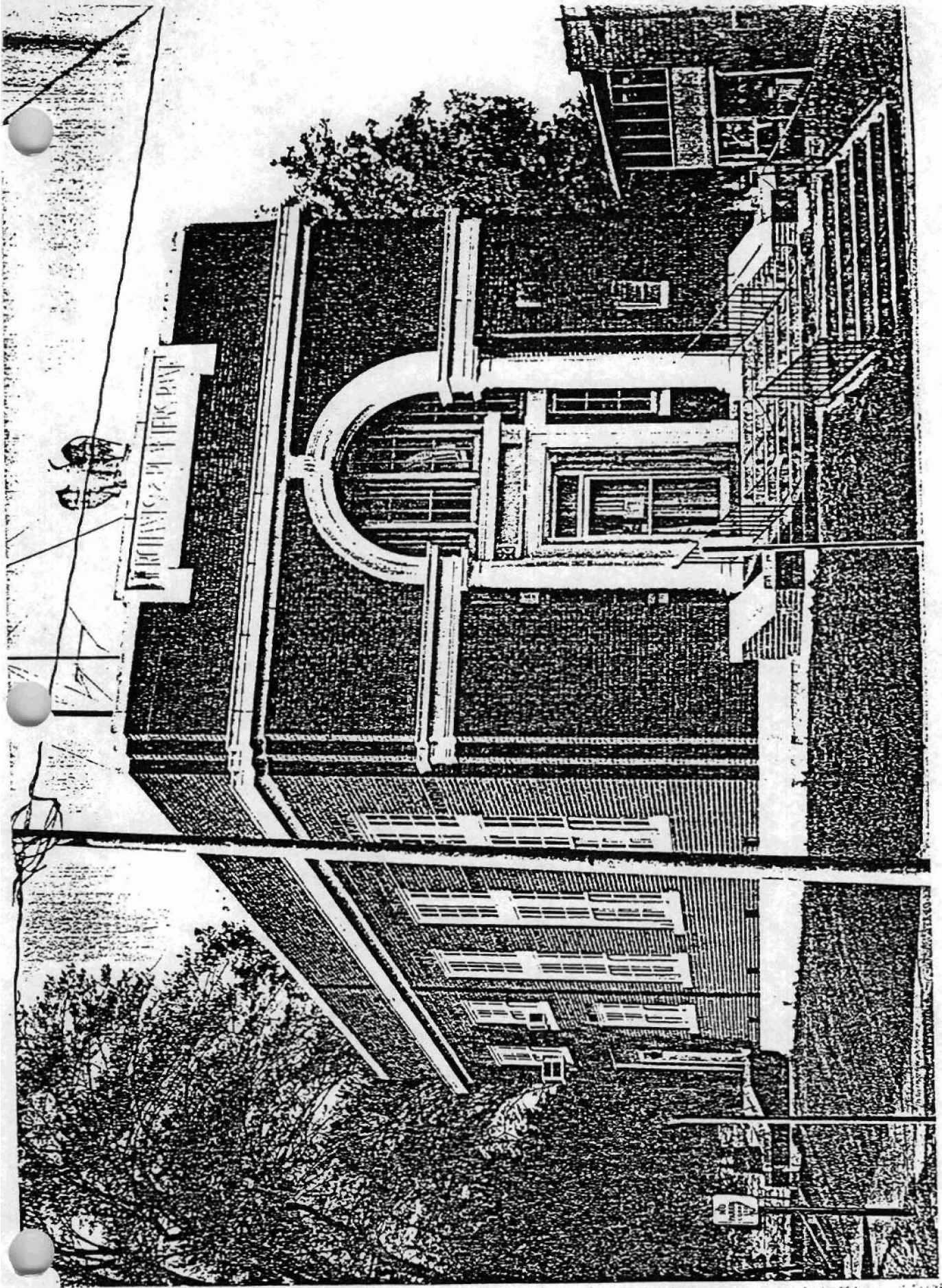
(214 Madison, Clarendon, AR)

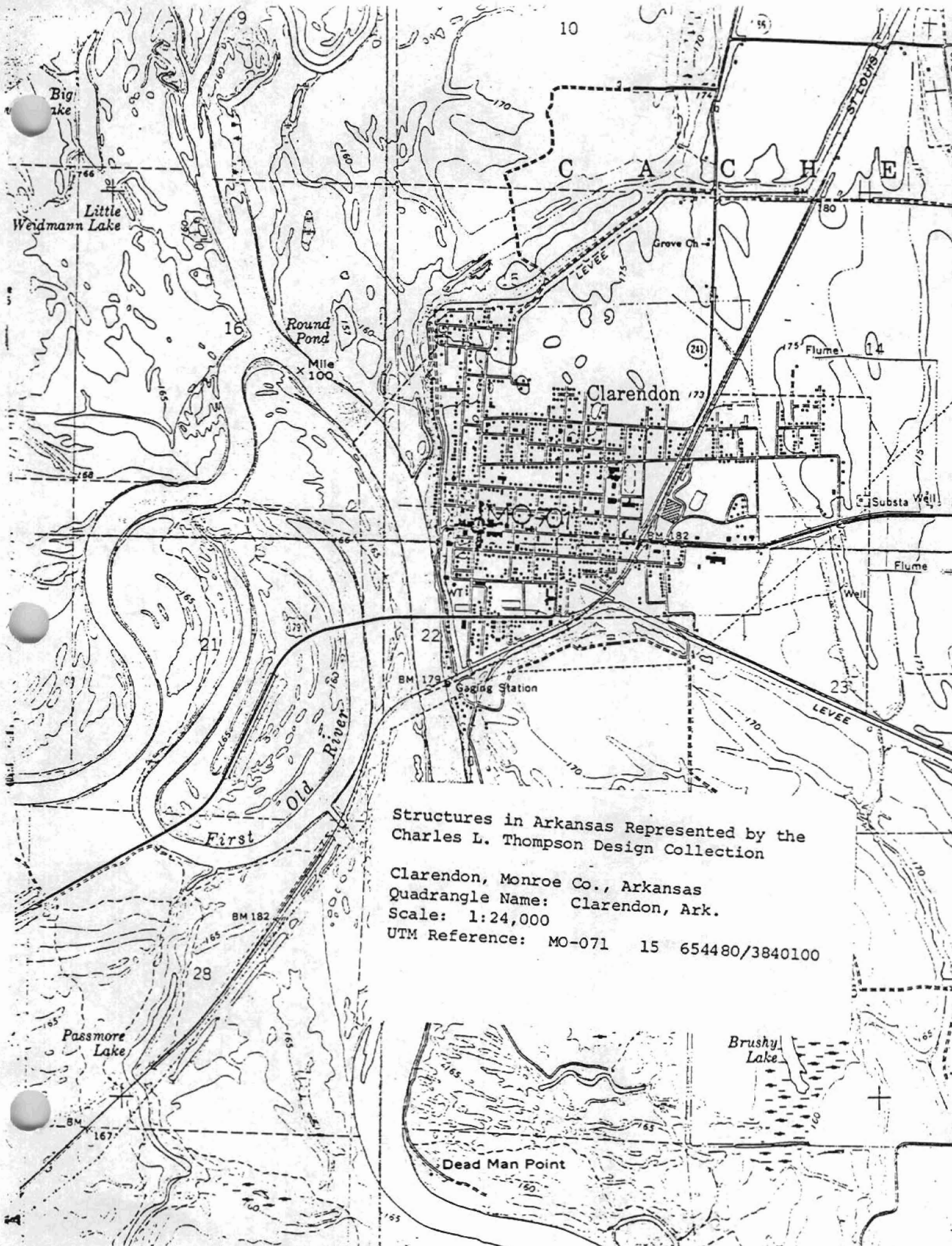
Physical Description

This elegant little small town bank is situated on a corner site on a berm raised above sidewalk level, allowing two broad flights of concrete steps to create a ceremonious entrance appropriate to its formal, classically influenced facade. Simple lines and classical details characterize the rectangular one-story structure capped by a flat roof and faced with dark red brick. Two simple stone moldings, a cornice and stringcourse, wrap the entire building adding unity and a calm, horizontal line to the composition. The parapet has stone coping and features a central panel inscribed with the name of the bank. The facade's focal point is a monumental stone round arch at the entrance articulated with stone molding and keystone and supported by two tall stone Tuscan columns. The entrance is slightly recessed within this arch and features a classical molded architrave surmounted by a simple cornice. A group of three multi-paned windows appears above the door and a series of long multi-light windows lines the side elevations. An unusual feature among the firm's commercial design decorative details is the stone eagle perched atop the parapet over the central panel inscribed with the bank's name.

Statement of Significance

The Merchants and Planters Bank Building in Clarendon, Arkansas, was designed by the Thompson and Harding firm in 1921, and is one of the firm's most polished and well-proportioned designs for a small town bank. The bank is constructed of red brick with elegant classical design features, and the ceremonious entrance is characteristic of much of the firm's work. The jewel box-like building sits on a raised lot in a run down commercial district of a small delta town. Although vacant, the building is highly valued by the community and has been maintained in good condition. The only alteration from the original design is the addition of modern glass doors.





Structures in Arkansas Represented by the
Charles L. Thompson Design Collection

Clarendon, Monroe Co., Arkansas
Quadrangle Name: Clarendon, Ark.
Scale: 1:24,000

UTM Reference: MO-071 15 654480/3840100

