

United States Department of the Interior
National Park Service

NR LISTED

NOV 26 1999

NATIONAL REGISTER OF HISTORIC PLACES
REGISTRATION FORM

AHPP

1. Name of Property

Historic Name: Bunch Store

Other Name/Site Number: MA0063

2. Location

Street & Number: 100 Public Square (Northwest corner)

Not for Publication: N/A

City/Town: Kingston

Vicinity: N/A

State: AR County: Madison

Code: 087 Zip Code: 72742

3. Classification

Ownership of Property: Private

Category of Property: Building

Number of Resources within Property:

Contributing

Noncontributing

1

1

0

Buildings
Sites
Structures
Objects
Total

Number of contributing resources previously listed in the National Register: N/A

Name of related multiple property listing: N/A

Bunch Store
Name of Property

Madison County, Arkansas
County and State

4. State/Federal Agency Certification

As the designated authority under the National Historic Preservation Act of 1986, as amended, I hereby certify that this X nomination _____ request for determination of eligibility meets the documentation standards for registering properties in the National Register of Historic Places and meets the procedural and professional requirements set forth in 36 CFR Part 60. In my opinion, the property X meets _____ does not meet the National Register Criteria.

Cathy A. Lator
Signature of certifying official

10-1-99
Date

Arkansas Historic Preservation Program
State or Federal agency and bureau

In my opinion, the property _____ meets _____ does not meet the National Register criteria.

Signature of commenting or other official

Date

State or Federal agency and bureau

5. National Park Service Certification

I, hereby certify that this property is:

entered in the National Register _____

determined eligible for the National Register _____

determined not eligible for the National Register _____

removed from the National Register _____

other (explain): _____

Signature of Keeper Date
Of action

Bunch Store
Name of Property

Madison County, Arkansas
County and State

6. Function or Use

Historic: Commerce/Trade Sub: General Store

Current : Commerce/Trade Sub: General Store

7. Description

Architectural Classification:

Late 19th and early 20th century American movement/Commercial

Materials: foundation Stone roof Metal
walls Weatherboard other _____

Describe present and historic physical appearance:

Summary

The Bunch Store, built in 1890, is located on the northwest corner of the public square in Kingston. The two-story, front gabled frame commercial building rests on a stone foundation and is supported underneath with oak log joists on stone piers. The fenestration of the entire building is composed of four-over-four, double-hung wood frame windows, unless otherwise noted. Sometime between 1890 and 1916 a false front shed-roofed storage area was built along the eastern elevation. There are no other outbuildings associated with this building.

Elaboration

The Bunch Store is a two-story frame commercial building with a front gabled roof. Built in 1890, the building is sited on the northwest corner of the public square in Kingston. The entire building is about six inches out-of-plumb to the east (even though the floor is less than two inches out of level across its seventy-foot length). The obvious appearance is that the whole building is leaning to the east. The doors and windows are plumb, but the framing is not, so it is difficult to determine how this condition came to be. One possible explanation from oral history is that there was a violent windstorm during the construction that blew the frame out-of-plumb, and it was decided to continue the work regardless. This gives rise to a theory that the storage addition might have been built not just for storage but also to help brace the store.

Bunch Store
Name of Property

Madison County, Arkansas
County and State

Both the original store building and its attached addition have native stone foundations, pine weatherboard siding on stud wall framing and steel corrugated roofing over original wood shingles. A small brick chimney rises from the interior of the main building.

The front or southern elevation is symmetrically composed and dominated by the recessed beveled entry. Four double-hung, one-over-one windows flank the double-leaf single-light entry with wire guards on the bottom halves. Four cantilevered scissor brackets and purlins that reflect a very high degree of structural sophistication support a full-length awning of corrugated metal. Research indicates a Mr. Bradford, who built two other similar awnings on the Kingston Square, built the brackets. A series of detailed recessed panels form a wainscot across the front facade from the bottom of the windows to the sidewalk. The sidewalk is made of stone slabs covered with a layer of concrete. Above in the second story, the building is covered in weatherboard and fenestrated by two symmetrically placed four-over-four windows.

Sometime between 1890 and 1916, a fourteen-foot by seventy-foot shed-roofed storage addition was built along the eastern elevation of the Bunch Store. The addition features a large false front on its front facade giving the impression of a one-and-one-half story building abutting the larger two-story Bunch Store. The southern facade of the shed-roofed addition contains a centered multi-panel single-leaf door. East of the door is a four-over-four window that is covered by boards.

The western facade of the Bunch Store is entirely covered with weatherboard and contains no windows. The stone foundation is visible. Some deterioration of the foundation has occurred on the north end.

The northern facade is similar to the front with a strict symmetrical arrangement focusing on a centered double-leaf door with transom and flanking double-hung windows. The difference is that the double-leaf door is paneled without glass, and covered by a screen door. Above in the second story, the fenestration is composed of two double-hung windows aligned with the first story windows.

The northern elevation of the addition features the same fenestration as its front, with a centered single door and flanking boarded-up window to the east. The eastern side of the addition contains two small boarded-up asymmetrically placed windows, with the stone foundation visible from ground level on the south to two-foot high on the north.

The interior features many of its original details, including: oak flooring, perimeter built-in pine counters with cabinets of various designs, built-in shelving with elaborate crown molding, and free standing pine counters with curved glass display cases. Other notable features include built-in hardware bins with sliding doors, dogleg staircase with decorative cutwork balustrade and a double-barrel wood stove. In contrast, the interior of the storage addition has severely deteriorated because of leaks in the roof.

Bunch Store
Name of Property

Madison County, Arkansas
County and State

8. Statement of Significance

Certifying official has considered the significance of this property in relation to other properties: Local

Applicable National Register Criteria: C

Criteria Considerations (Exceptions): N/A

Areas of Significance: Architecture

Period(s) of Significance: 1890-1995

Significant Dates: 1890-1995

Significant Person(s): N/A

Cultural Affiliation: N/A

~~Architect/Builder: Joel Bunch~~

State significance of property, and justify criteria, criteria considerations, and areas and period of significance noted above:

Summary

The Bunch Store is being nominated to the National Register under Criterion C with local significance as an excellent example of an 1890 two-story frame commercial building constructed in the Plain/Traditional manner.

Elaboration

In the mid-1800s, the town of Kingston in Madison County grew to become a prosperous farming community in a beautiful valley near the Kings River. By 1861 Kingston had over forty houses and businesses organized around an open square with a water well in the center.

The Civil War brought great suffering and destruction to the people of Kingston and the surrounding areas, not so much from Confederate or Union troops, but from marauding guerillas. Indiscriminate murders, arson, robbery, rape, pillage and ambush characterized their operations. Sometime in 1863 the entire town was burned to the ground by a large band of such vigilante "jayhawkers" from Missouri. Only one brick house a few miles south of town was left standing.

Bunch Store
Name of Property

Madison County, Arkansas
County and State

It took many years to rebuild from the ashes, but by 1880 there were several houses and nine businesses in operation, one of which was a general merchandise store begun in that year by Joel N. Bunch, son of Captain Larkin Bunch who died during the Civil War.

According to Bunch family records, the early years of operation were very difficult. The store was very small and of primitive construction and Bunch had to haul all his goods from Springfield, Missouri by wagon across rugged terrain and many rivers, taking three weeks for the round-trip. However, he proved to be an enterprising merchant who ran his store with a great deal of efficiency and always presented his goods in a neat fashion with the appearance of an abundance of items from which to choose.

As the business grew he was financially able to hire a freight hauler. (George Yates) to obtain merchandise, leaving him more time to run the store. By 1890, Bunch outgrew his first store and built the current larger building on the northwest corner of the Kingston Square.

In addition to general merchandise he was then able to offer a full line of hardware, medicine, farm machinery, harnesses, feeds, seeds, wagons, and various other goods. Practically anything needed by the people in the Kingston area could be found at Bunch's store, which was also home of the first telephone in Kingston in the 1930s.

The store became well-known not only for its extensive variety of goods, but also as a community center for marketing the products of local farmers. Local herbs such as ginseng, golden seal and many others were sold to pharmaceutical houses in the east. Pelts of opossum, mink, fox, and polecat were marketed to a fur company in St. Louis. Cowhides were bought, tanned and made into leather goods and sold through the store. Eggs, dried fruit, honey and molasses were packaged and hauled in Bunch wagons to railroad centers in Fayetteville, Berryville and Pettigrew.

As the business continued to grow, two of Joel's brothers, John and Larkin, purchased interests in the store and it became known as Bunch Brothers and Company. With the entrance of his brothers into the business Joel Bunch had more time to spend on other projects. He was instrumental in starting a wagon spoke plant in 1907, the first and only industry Kingston has ever had. It also proved to be very successful, employing many persons in the area, until it was destroyed by fire in 1929.

Other notable achievements of Joel Bunch as a civic and business leader include his serving in the State Legislature in 1885, starting the Bank of Kingston in 1911, serving as President of the banks of Kingston and Huntsville and maintaining farming operations on 2,500 acres. He and his brothers were all leaders in the Masonic Lodge, and meetings of the Lodge and other community events were held for many years in the second floor of the Bunch Store. According to oral history, Joel Bunch tended his thriving store for forty-seven years without vacation until his death in 1927.

After his death, his son Alvin B. Bunch ran the store until his death in 1959. Alvin's son Hugh Bunch, then took over until he died in 1995. At that time the store was closed and remained undisturbed until it was sold at auction in October 19698 to Hugh's nephew, Joel Bunch and his wife Joyce. The

Bunch Store
Name of Property

Madison County, Arkansas
County and State

new owners plan to open the store with the same functions as the original: general merchandise retail on the first floor and an assembly space on the second floor for civic meetings and educational seminars. Also, a small efficiency apartment will be incorporated on the second floor. The building will be made handicap accessible and have its electrical and plumbing systems brought up to code. An enclosed stairwell will be incorporated within the storage area to meet the access requirements for the second floor. As approved by the Arkansas Historic Preservation Program staff, this stairwell will not disrupt either the visible interior or exterior of the building.

The Bunch Store has been the center for business and community life in Kingston for over one-hundred years, owned and operated by the same family with very few alterations and only minor deterioration since 1890. It is an outstanding and rare landmark that testifies to the rich history of Kingston and the National Register of Historic Places under Criterion C with local significance.

9. Major Bibliographical References

Chappell, J.L., History of Kingston, Kingston High School, 1975.

Centennial History of Arkansas, S.J. Clarke Publishing Co., Chicago/St. Louis, 1922.

Bradley, M., Arkansas, Bradley Publishing, 1996.

Bunch family albums and correspondence (1890-1999)

Previous documentation on file (NPS):

- preliminary determination of individual listing (36 CFR 67) has been requested.
- previously listed in the National Register
- previously determined eligible by the National Register
- designated a National Historic Landmark
- recorded by Historic American Buildings Survey #
- recorded by Historic American Engineering Record #

Primary Location of Additional Data: _____

- State historic preservation office
- Other state agency
- Federal agency
- Local government
- University
- Other -- Specify Repository: _____

Bunch Store
Name of Property

Madison County, Arkansas
County and State

10. Geographical Data

Acreage of Property: Less than one acre.

UTM References: Zone Easting Northing Zone Easting Northing

A 15 453410 3989520 B
C D

Verbal Boundary Description:

A part of the SW 1/4 of the NW 1/4, of Section 15, T16N, R24W, 5th Principal Meridian, Madison County, Arkansas, and being more particularly described as follows; Commencing at the northwest corner of said Section 15, thence along the west line thereof, SOUTH 1634.18 feet, to a point in the centerline of Town Branch (also known as Maxwell Creek), the POINT OF BEGINNING, thence leaving said west line, and along said creek centerline, S 64"50"35"E 135.78 feet, to a point, thence leaving said centerline, S 1"48"50"W 168.33 feet to a point, thence N88"04"44"W 117.64 feet, to a point on the west line of said Section 15, thence along said street line, NORTH 222.02 feet, to the POINT OF BEGINNING, containing 0.541 acres.

Boundary Justification:

The boundary of this survey includes all of the property historically associated with the Bunch Store in Kingston, AR.

11. Form Prepared By

Name/Title: Albert Skiles

Organization: Albert Skiles, Architect

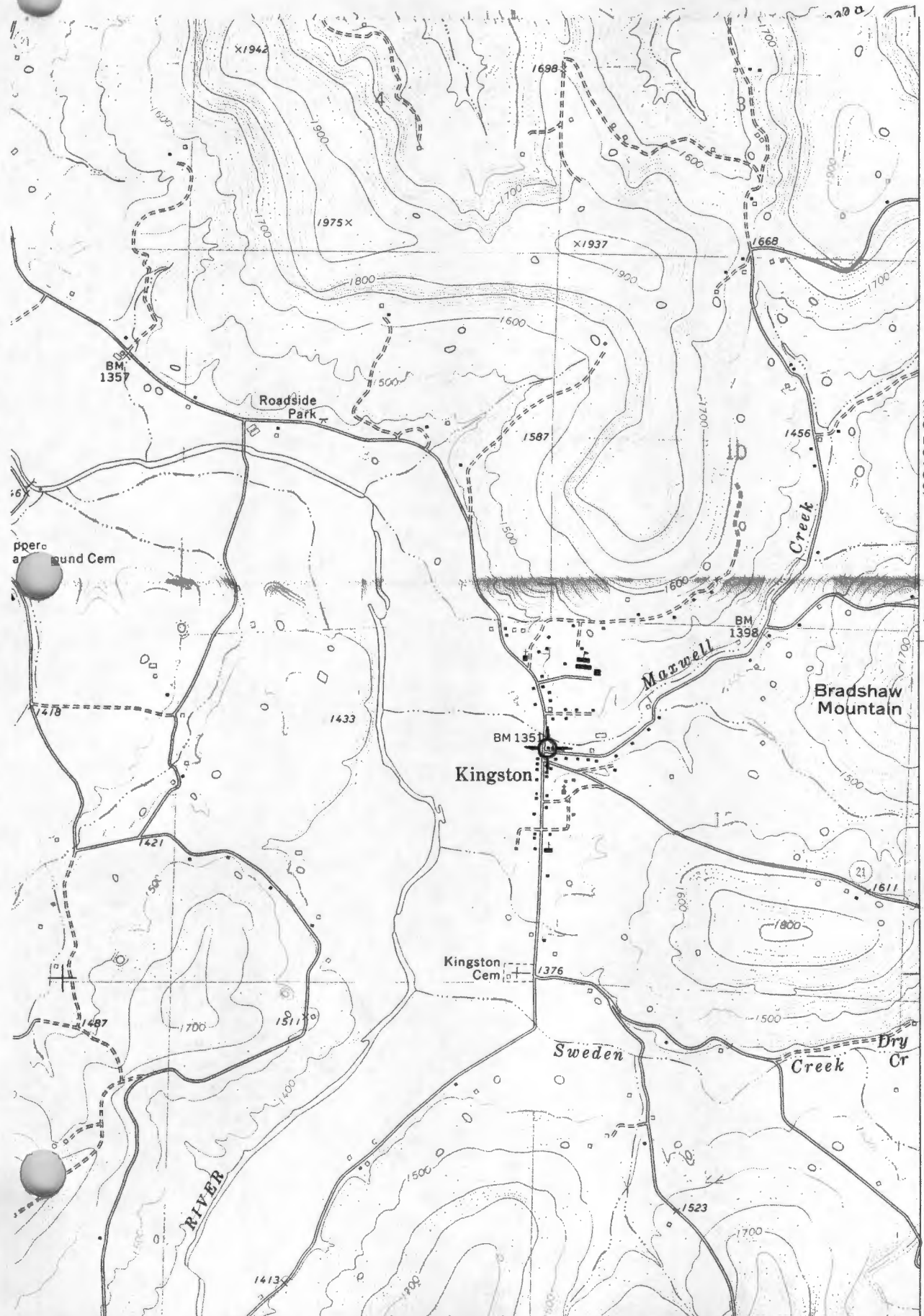
Date: 10/02/98

Street & Number: 444 Lee Parker Avenue

Telephone: (501) 521-5010

City or Town: Fayetteville

State: AR ZIP: 72703



392

(OSAGE SW)
7356 III SW

BUNCH STORE
Kingston, Madison
CO.
15/453410/3989520

390

2'30"

398

3987



