

NR Listed 12-8-88
88002823

United States Department of the Interior
National Park Service

National Register of Historic Places Registration Form

This form is for use in nominating or requesting determinations of eligibility for individual properties or districts. See instructions in *Guidelines for Completing National Register Forms* (National Register Bulletin 16). Complete each item by marking "x" in the appropriate box or by entering the requested information. If an item does not apply to the property being documented, enter "N/A" for "not applicable." For functions, styles, materials, and areas of significance, enter only the categories and subcategories listed in the instructions. For additional space use continuation sheets (Form 10-900a). Type all entries.

1. Name of Property

historic name Judge Jefferson Thomas Cowling House
other names/site number _____

2. Location

street & number 611 Willow Street not for publication N/A
city, town Ashdown vicinity N/A
state Arkansas code AR county Little River code AR 081 zip code 91822

3. Classification

Ownership of Property

- private
- public-local
- public-State
- public-Federal

Category of Property

- building(s)
- district
- site
- structure
- object

Number of Resources within Property

Contributing	Noncontributing
<u>1</u>	_____ buildings
_____	_____ sites
_____	_____ structures
_____	_____ objects
<u>1</u>	_____ Total

Name of related multiple property listing: _____

Number of contributing resources previously listed in the National Register _____

4. State/Federal Agency Certification

As the designated authority under the National Historic Preservation Act of 1966, as amended, I hereby certify that this nomination request for determination of eligibility meets the documentation standards for registering properties in the National Register of Historic Places and meets the procedural and professional requirements set forth in 36 CFR Part 60. In my opinion, the property meets does not meet the National Register criteria. See continuation sheet.

Cathryn S. Boyd
Signature of certifying official
Arkansas Historic Preservation Program
State or Federal agency and bureau

11-1-88
Date

In my opinion, the property meets does not meet the National Register criteria. See continuation sheet.

Signature of commenting or other official _____

Date _____

State or Federal agency and bureau _____

5. National Park Service Certification

I, hereby, certify that this property is:

- entered in the National Register.
 See continuation sheet.
- determined eligible for the National Register. See continuation sheet.
- determined not eligible for the National Register.
- removed from the National Register.
- other, (explain): _____

Signature of the Keeper _____

Date of Action _____

United States Department of the Interior
National Park Service

National Register of Historic Places Continuation Sheet

Section number 7 Page 1

identical dimensions. The porch is supported on pairs of wood columns supported on brick piers and a brick foundation. The roof is covered with asphalt shingles and a single rectangular chimney protrudes from the western end of the ridge. The walls are sheathed in novelty siding with simple door, window and corner trim, and a simple box cornice ornaments the overhanging eaves. The pediments are likewise decorated with simple box moldings and thin friezeboards. The foundation is brick, and is penetrated only by small rectangular vents placed beneath the sills.

The interior retains virtually all of its elegant, simple wood detail. Of particular note are the wood screen supported on columns that provides an entry to the panelled window seat in the turret; the panelled newel posts, carved bannister, underside paneling and storage doors that decorate the stairway; and the carved baseboards that extend throughout the house.

There have been no significant alterations to the structure.

6. Function or Use

Historic Functions (enter categories from instructions)

Domestic/Single Dwelling

Current Functions (enter categories from instructions)

Domestic/Single Dwelling

7. Description

Architectural Classification

(enter categories from instructions)

Late 19th and 20th Century Revivals

Other: Transitional

Materials (enter categories from instructions)

foundation brick

walls wood/weatherboard

asphalt

other porch: wood/brick

Describe present and historic physical appearance.

Summary

The Judge Cowling House is a distinctive local example of the style of architecture that has come to be known as Transitional. Its asymmetrical, interpenetrating massing and conical corner turret recall the Queen Anne style, while its pedimented bays and classical porch columns herald the Colonial Revival style that first appeared in the United States after the Philadelphia Centennial Exposition of 1876, and which acquired increasing popularity thereafter. It remains an attractive, intact and visible vernacular example of the dissemination and subsequent synthesis of popular architectural styles as interpreted by local builders and craftsmen.

Elaboration

The Judge J. T. Cowling House is a two-and-one-half story, wood frame transitional style residence. Its hipped roof with a ridge covers a main structure of essentially rectangular plan, though the eastern or front elevation features a single story projecting porch, with conical corner roof and finial, that wraps around to the southern elevation, a round two-story corner turret behind, also with a conical roof, and a projecting polygonal bay to the north, topped with a pediment. The round bay is fenestrated with three one-over-one wood sash windows on each floor. A single one-over-one window is offset above the entrance, which is decorated with a door lighted with a single oval pane, an ornamental leaded transom, and simple, single-pane sidelights surmounted with rectangular, leaded lights that match the transom in between. The northern pedimented bay has a single, central louvered vent in the pediment below which are three one-over-one sash windows on each of the two floors, those of the central bay being wider than the others, which are identical. The northern elevation features a two-story pedimented bay centrally-placed between two bays, each of which are fenestrated with a single one-over-one sash window on each floor. The projecting bay itself has only a single central vent in the pediment and a single pair of grouped windows on each floor below. The western or rear elevation has a two-story projecting porch placed flush with the northern wall, with a single bay of the main structure to the south. The porch is open on the entire second story, and closed in on the northern third of the first story, open in the middle and latticed on the southern third. The southern bay has a single one-over-one sash window on each story. The southern elevation has a pair of grouped one-over-one sash windows on each floor in the western bay, and single one-over-one sash windows to the east. Above the corner porch is a thin one-over-one sash window, and a larger one-over-one sash window next to the corner turret. Beneath the porch roof, and directly below the latter second story window, is a one-over-one sash window of

See continuation sheet

8. Statement of Significance

Certifying official has considered the significance of this property in relation to other properties:

nationally statewide locally

Applicable National Register Criteria A B C D

Criteria Considerations (Exceptions) A B C D E F G

Areas of Significance (enter categories from instructions)

Architecture
Law
Politics/Government

Period of Significance

1910-1917

Significant Dates

Cultural Affiliation

N/A

Significant Person

Judge Jefferson Thomas Cowling

Architect/Builder

Mr. Westbrook

State significance of property, and justify criteria, criteria considerations, and areas and periods of significance noted above.

Summary

The Judge Jefferson Thomas Cowling House dates from the period of Judge Cowling's greatest activity both in the town of Ashdown and in Little River County, where he was a prominent jurist, a dedicated church leader at both the local and state levels, and a successful and influential businessman. He built this house to accommodate the frequent guests he received as a result of his various activities and in response to the rapid growth that was taking place in Ashdown in the years around 1910. It remains the finest example of Transitional-style architecture in Ashdown and reflects the personal and public ambitions of its owner through the use of this popular style.

Elaboration

The Judge Jefferson Thomas Cowling House is the second house in Ashdown in which the Judge and his family lived, the first being a small wood frame house located at the opposite corner of the same block, on the corner of Oak and Fulton Streets. He constructed his new home when it became evident that he needed a larger structure to accommodate his obligations as a civic and church leader who received many out-of-town guests, business associates, etc. J. T. Cowling was born in 1862 into humble beginnings in Mineral Springs, a small town in adjacent Howard County, and was raised in Brownstown, in Sevier County. He later earned enough money farming to pay his tuition through college at Bowling Green, Kentucky, and the Peabody Normal School in Nashville, Tennessee from which he graduated. He returned to Arkansas to work as a teacher and school superintendent and was admitted to the Arkansas bar in 1895. In the same year he began what would become a flourishing law business in nearby Richmond.

It was in 1897, that Cowling's career began to gain wider local importance, as it was in that year that he was elected Sargeant-Of-Arms of the State House of Representatives; in 1900, he was elected to the legislature itself. His law practice continued to prosper until, in 1910, he gave up his practice to serve as a judge of the Ninth Judicial Circuit. In this capacity he became well-known locally for his sagacious advice and "moral uprightness."

See continuation sheet

United States Department of the Interior
National Park ServiceNational Register of Historic Places
Continuation SheetSection number 8 Page 1

In the meantime, Judge Cowling had been elected Vice-President of the Baptist State Convention. He had been active locally in the Baptist Church since early in life and had also become a member of the State Mission Board. He and his wife frequently "took in" missionaries who passed through Ashdown, a practice which is cited as one of the reasons for the building of a larger home.

Judge Cowling also served on the boards of several local businesses and civic groups, including the Little River County Bank and the Home Protective Association Insurance Company. Local newspapers of the period tout his business acumen and cite his successful experiences in his own financial endeavors. He died on September 14, 1917, at fifty-five years of age, while he was serving his second term as judge on the 9th Circuit.

J. T. Cowling was one of the earliest settlers of the town of Ashdown an open and relatively unsettled area known as "Turkey Flats" prior to the junction created in 1888 by the construction of the Texarkana-Fort Smith (Kansas City Southern) Railroad which intersected the old Peytonville-Richmond road. Through his various activities and professional interests, he contributed significantly to guiding the stable and prosperous growth of Ashdown.

Ashdown began with the laying of the railroad, but its settlement proceeded only gradually until the first decade of the twentieth century. In 1901, the population was 400, but was 1500 by 1910. Undoubtedly, this development and expansion of Ashdown, coupled with Judge Cowling's extensive activities and commitments, resulted in the handsome new home he built in 1910. No drawings survive, but it is known that a Mr. Westbrook built it. Its synthesis of the Queen Anne and Colonial Revival styles reveals an exposure to current styles unusual for local builders in rural Arkansas, and indicates also an exceptional facility with the composition and integration of components as traditionally disparate as the vernacular English Medieval (from which came the Queen Anne) and the Neoclassical.

The house remains virtually intact, and its few alterations are due more to decay than re-design.

9. Major Bibliographical References

Arkansas Bar Association Proceedings, 1918, 21st Meeting, pp. 120-121.

Arkansas Gazette, January 19, 1897, pg. 2, column 5.

Beasley, William, Little River County, (Little River County Historical Society, 1975).

Deed Records. Little River County Courthouse, Ashdown, Arkansas.

See continuation sheet

Previous documentation on file (NPS):

- preliminary determination of individual listing (36 CFR 67) has been requested
- previously listed in the National Register
- previously determined eligible by the National Register
- designated a National Historic Landmark
- recorded by Historic American Buildings Survey # _____
- recorded by Historic American Engineering Record # _____

Primary location of additional data:

- State historic preservation office
- Other State agency
- Federal agency
- Local government
- University
- Other

Specify repository: _____

10. Geographical Data

Acreeage of property Less than one

UTM References

A 1 5 | 395363 | 3726920
Zone Easting Northing

C []

B []
Zone Easting Northing

D []

See continuation sheet

Verbal Boundary Description

Lots one (1) and two (2), block seventeen (17), of the Maloy Waddell Addition to the town of Ashdown, Little River County.

See continuation sheet

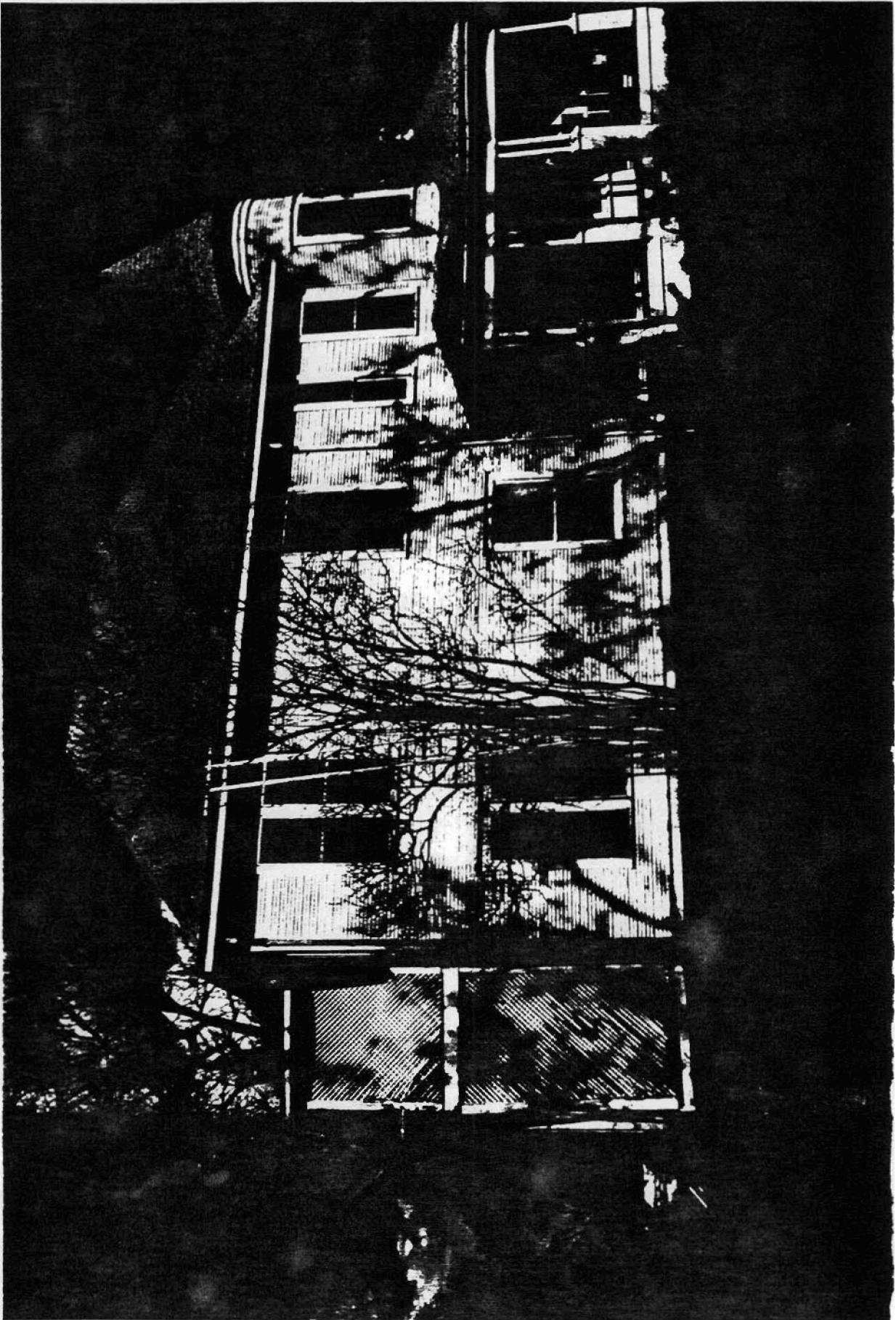
Boundary Justification

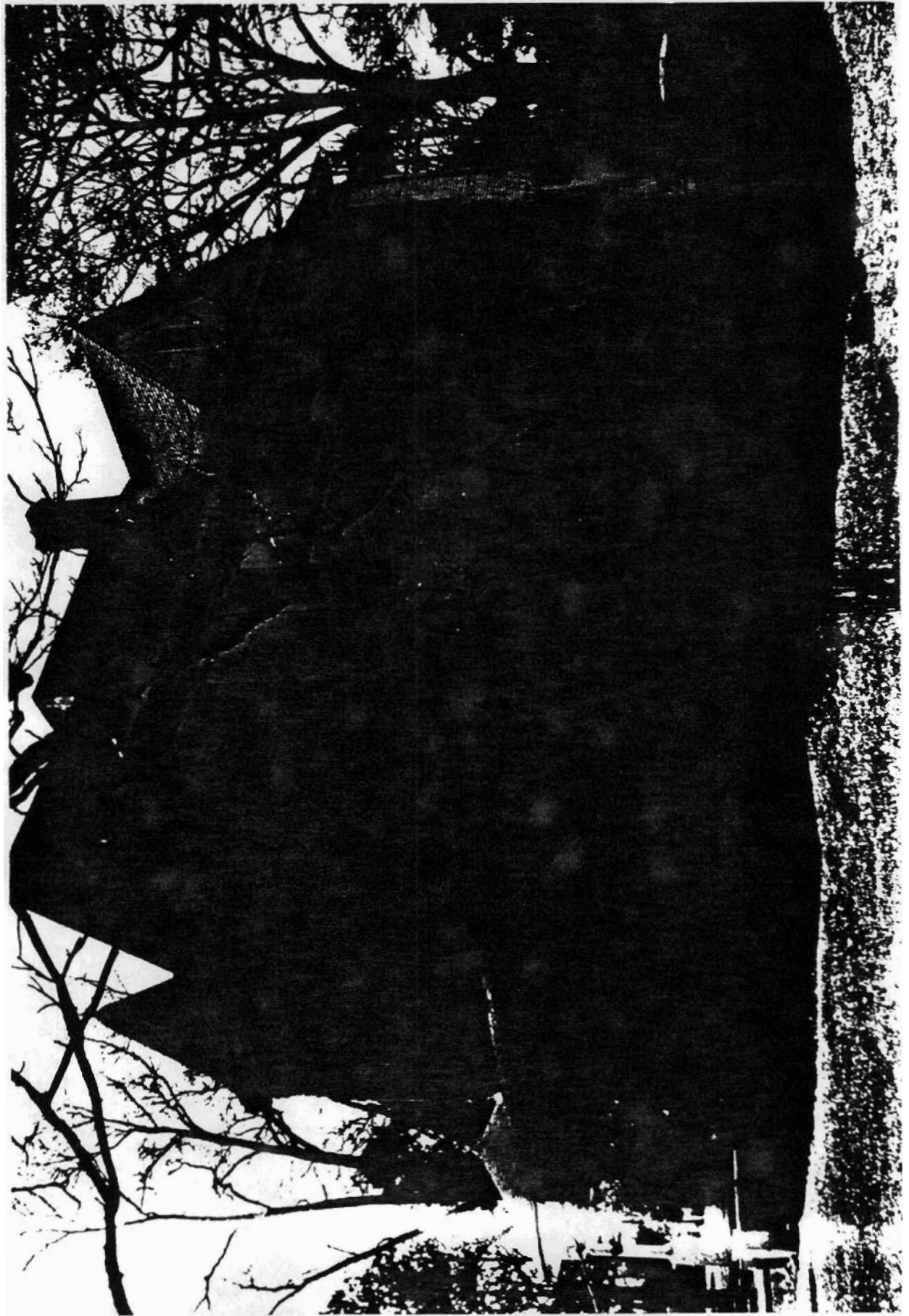
These lots include all the property historically included with this resource.

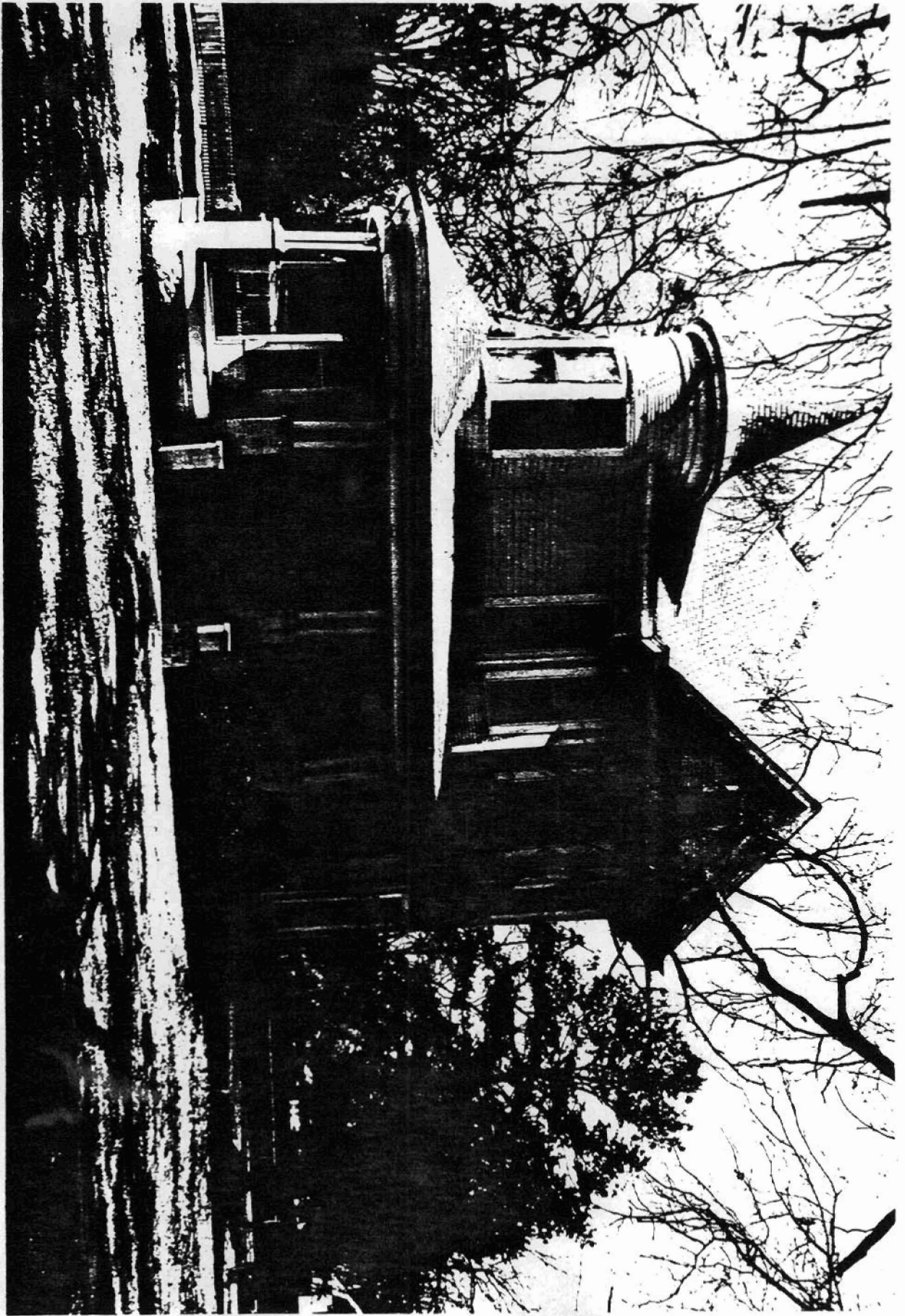
See continuation sheet

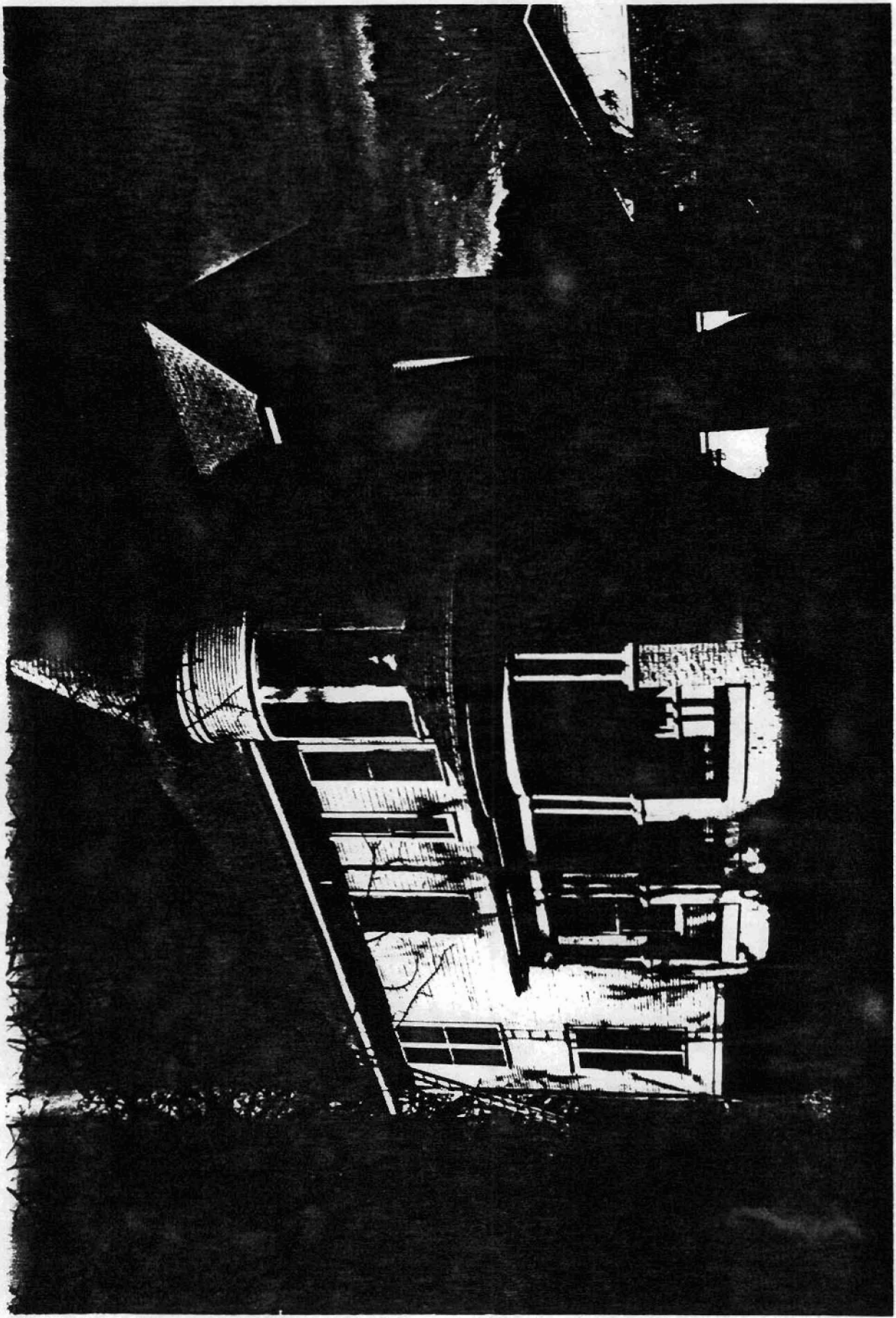
11. Form Prepared By

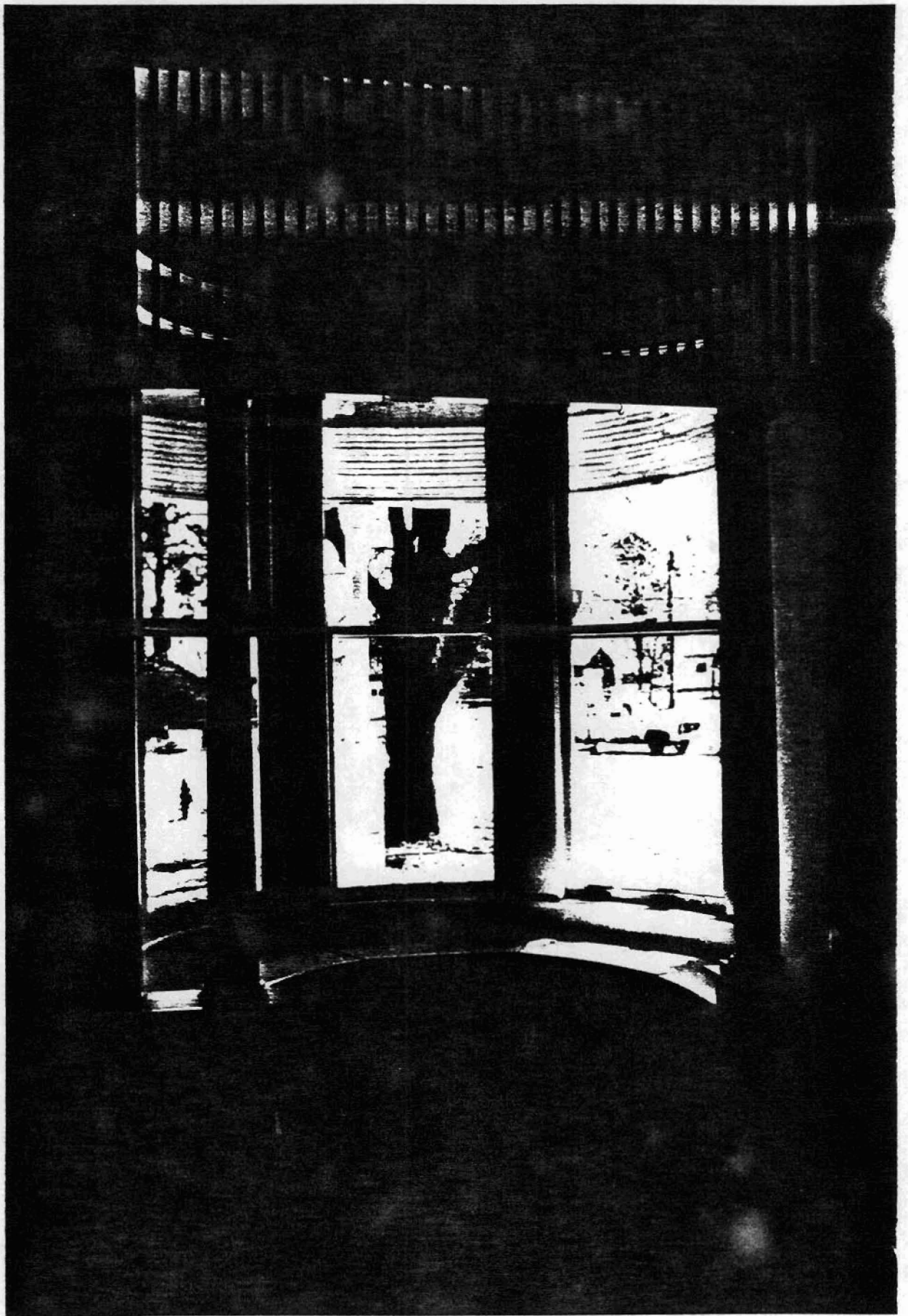
name/title Kenneth Story, Architectural Historian
organization Arkansas Historic Preservation Program date September 7, 1988
street & number 225 E. Markham, Suite 200 telephone (501) 371-2763
city or town Little Rock state Arkansas zip code 72201

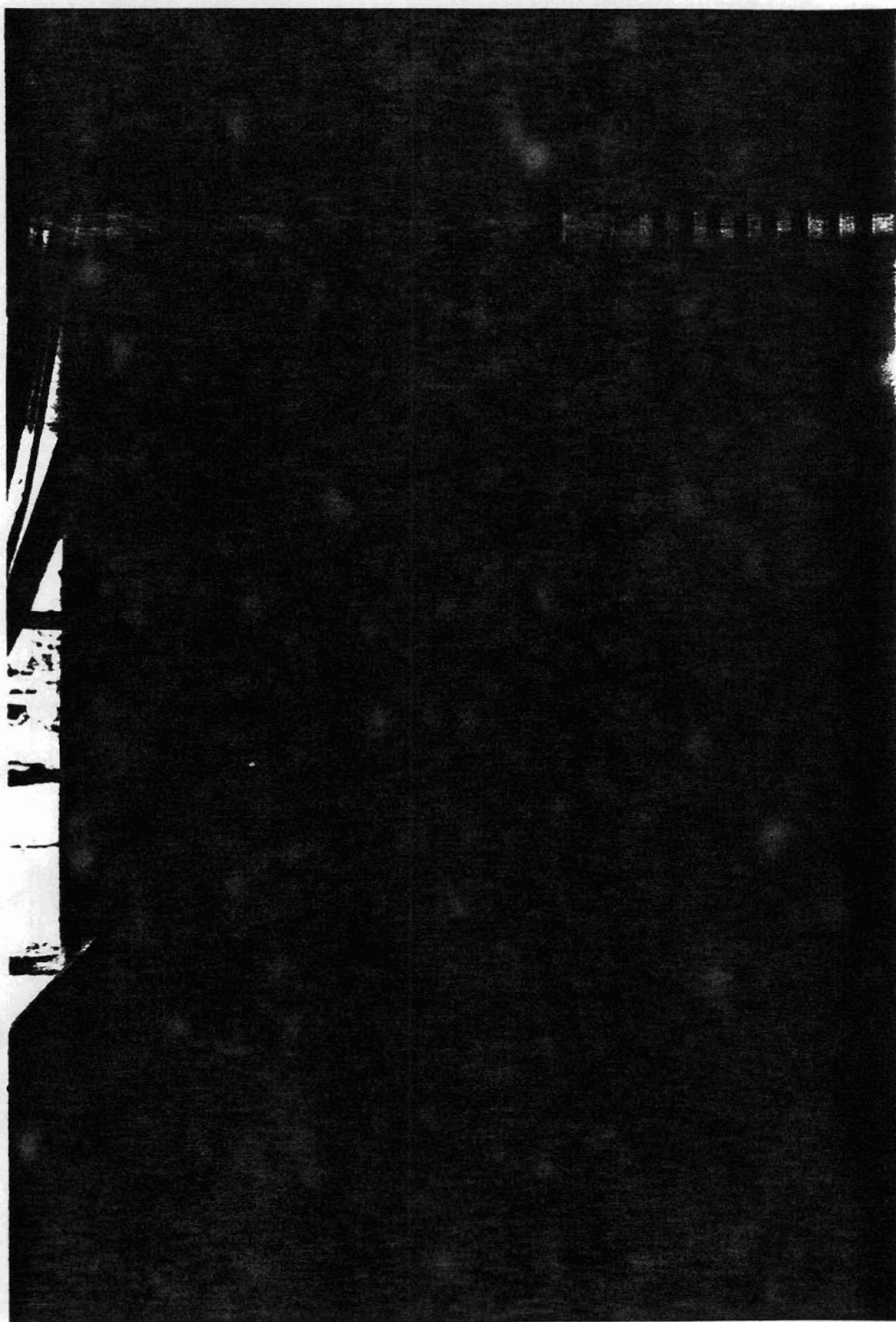


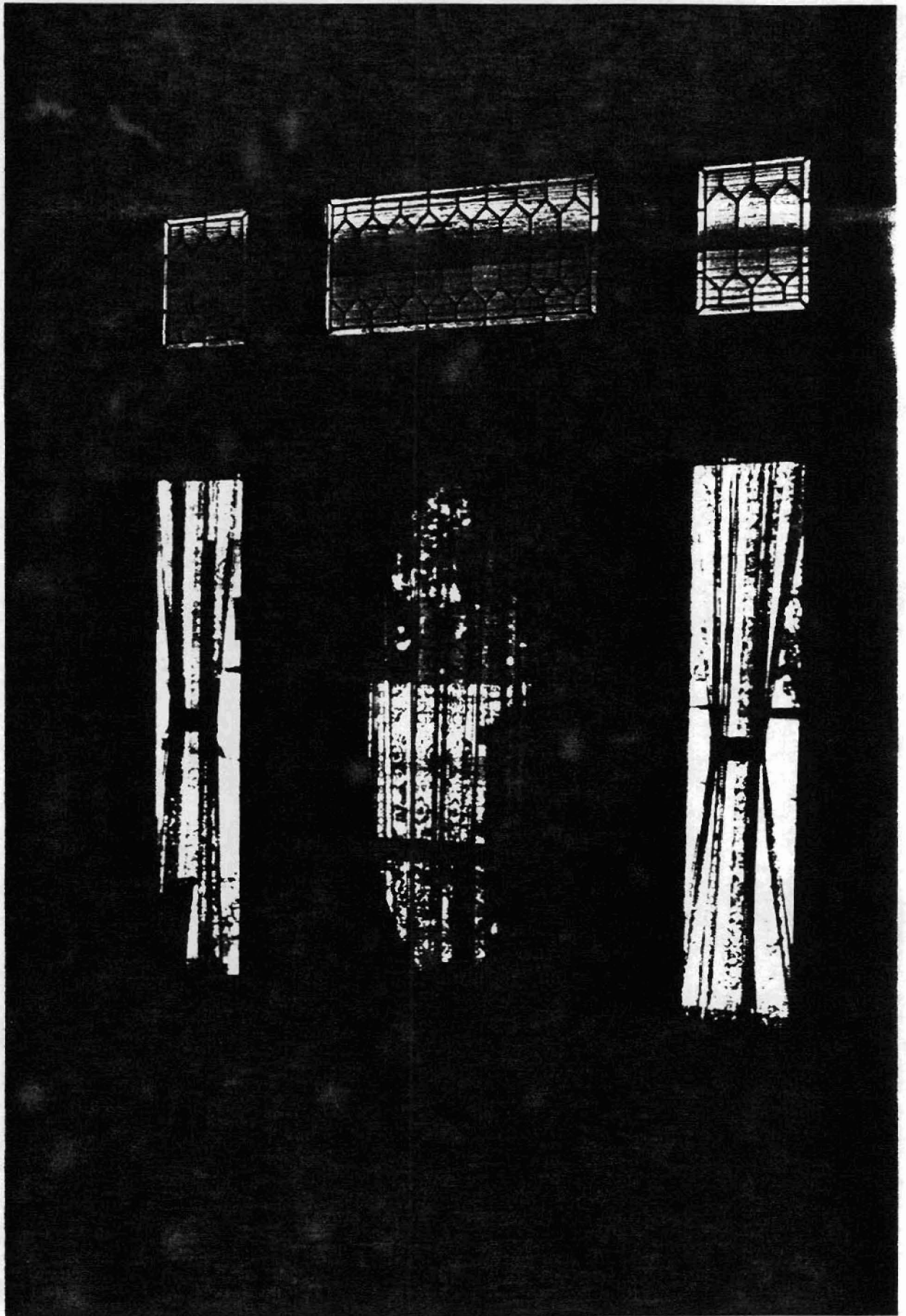












Judge J. T. Cowling House
Ashdown, Arkansas
Little River County
15/395365/3725920
Ashdown West Quadrangle
1:24000



