

Book Copy

NR LISTED 5/26/95

NPS Form 10-900  
(Rev. 8-86)

OMB No. 1024-0018

United States Department of the Interior  
National Park Service

NATIONAL REGISTER OF HISTORIC PLACES  
REGISTRATION FORM

=====

1. Name of Property

=====

historic name: Cove Creek Tributary Bridge

other name/site number: LQ0051

=====

2. Location

=====

street & number: State Highway 309 at crossing of tributary to Cove Creek

not for publication: N/A

city/town: Corley

vicinity: X

state: AR county: Logan code: AR 083 zip code: 72855

=====

3. Classification

=====

Ownership of Property: Public-state

Category of Property: Structure

Number of Resources within Property:

Contributing	Noncontributing	
_____	_____	buildings
_____	_____	sites
<u>1</u>	_____	structures
_____	_____	objects
<u>1</u>	<u>0</u>	Total

Number of contributing resources previously listed in the National Register: N/A

Name of related multiple property listing: Historic Bridges of Arkansas

=====  
**4. State/Federal Agency Certification**  
=====

As the designated authority under the National Historic Preservation Act of 1986, as amended, I hereby certify that this X nomination \_\_\_\_\_ request for determination of eligibility meets the documentation standards for registering properties in the National Register of Historic Places and meets the procedural and professional requirements set forth in 36 CFR Part 60. In my opinion, the property X meets \_\_\_\_\_ does not meet the National Register Criteria. \_\_\_\_\_ See continuation sheet

Cathryn A. Slatu \_\_\_\_\_  
Signature of certifying official Date 4-11-95

Arkansas Historic Preservation Program  
State or Federal agency and bureau

In my opinion, the property \_\_\_\_\_ meets \_\_\_\_\_ does not meet the National Register criteria. \_\_\_\_\_ See continuation sheet.

\_\_\_\_\_  
Signature of commenting or other official Date

\_\_\_\_\_  
State or Federal agency and bureau

=====  
**5. National Park Service Certification**  
=====

I, hereby certify that this property is:

- \_\_\_\_\_ entered in the National Register \_\_\_\_\_  
\_\_\_\_\_ See continuation sheet.
- \_\_\_\_\_ determined eligible for the \_\_\_\_\_  
National Register \_\_\_\_\_  
\_\_\_\_\_ See continuation sheet.
- \_\_\_\_\_ determined not eligible for the \_\_\_\_\_  
National Register \_\_\_\_\_
- \_\_\_\_\_ removed from the National Register \_\_\_\_\_
- \_\_\_\_\_ other (explain): \_\_\_\_\_

\_\_\_\_\_  
Signature of Keeper Date of Action

=====  
**6. Function or Use**  
=====

Historic: TRANSPORTATION Sub: Road-related  
\_\_\_\_\_  
\_\_\_\_\_  
Current: TRANSPORTATION Sub: Road-related  
\_\_\_\_\_  
\_\_\_\_\_

=====

**7. Description**

=====

Architectural Classification:

Other  
\_\_\_\_\_  
\_\_\_\_\_

Other Description: Masonry closed spandrel arch

Materials:	foundation	<u>Stone</u>	roof	<u>N/A</u>
	walls	<u>Concrete</u>	other	<u>Asphalt over concrete</u>

Describe present and historic physical appearance. X See continuation sheet.

=====

**8. Statement of Significance**

=====

Certifying official has considered the significance of this property in relation to other properties: Local.

Applicable National Register Criteria: C

Criteria Considerations (Exceptions): N/A

Areas of Significance: ENGINEERING  
\_\_\_\_\_  
\_\_\_\_\_

Period(s) of Significance: 1936-1939

Significant Dates: 1936

Significant Person(s): N/A  
\_\_\_\_\_

Cultural Affiliation: N/A

Architect/Builder: Unknown  
\_\_\_\_\_  
\_\_\_\_\_

State significance of property, and justify criteria, criteria considerations, and areas and periods of significance noted above. X See continuation sheet.

=====
9. Major Bibliographical References
=====

See "Historic Bridges of Arkansas" MPS Nomination, Section H.

See continuation sheet.

Previous documentation on file (NPS):

- preliminary determination of individual listing (36 CFR 67) has been requested.
- previously listed in the National Register
- previously determined eligible by the National Register
- designated a National Historic Landmark
- recorded by Historic American Buildings Survey #
- recorded by Historic American Engineering Record #

Primary Location of Additional Data:

- X State historic preservation office
- Other state agency
- Federal agency
- Local government
- University
- Other -- Specify Repository:

=====
10. Geographical Data
=====

Acreeage of Property: Less than one

Table with 6 columns: UTM References, Zone Easting, Northing, Zone Easting, Northing. Rows A, B, C, D.

See continuation sheet.

Verbal Boundary Description: See continuation sheet.

Beginning at a point formed by the intersection of the southwestern edge of State Highway 309 with a perpendicular line running parallel with the northwestern end of the bridge and located approximately 25 feet to the northwest thereof, proceed southwesterly for a distance of approximately 25 feet to its intersection with a perpendicular line running parallel with the bridge's southwestern side; thence proceed southeasterly along said line for a distance of approximately 73 feet to its intersection with a perpendicular line; thence proceed northeasterly along said line for a distance of approximately 82 feet to its intersection with a perpendicular line; thence proceed northwesterly along said line for a distance of approximately 73 feet to its intersection with a perpendicular line; thence proceed southwesterly to the point of beginning.

Boundary Justification: See continuation sheet.

This boundary includes all the property historically associated with this resource.

=====  
11. Form Prepared By  
=====

Name/Title: Ken Story, National Register/Survey Coordinator  
Organization: Arkansas Historic Preservation Program Date: 04/04/95  
Street & Number: 323 Center Street, Suite 1500 Telephone: (501) 324-9880  
City or Town: Little Rock State: AR Zip: 72201

United States Department of the Interior  
National Park Service

## National Register of Historic Places Continuation Sheet

Section number 7 Page 1

---

### Description

Located on Highway 309 at its crossing of a tributary of Cove Creek (approximately 8.5 miles southeast of Paris and approximately 1/2 mile southeast of the junction of Highway 309 and County Road 53), the Cove Creek Tributary Bridge is of the stone masonry, closed spandrel arch type. The two arches each span a distance of 11 feet and the overall length is 23 feet. The deck measures 29 feet in width and the overall width is 32 feet. The entire bridge is of structural stone masonry construction with a deck composed of asphalt over a concrete subsurface. A later solid concrete barrier runs along both sides of the deck.

United States Department of the Interior  
National Park Service

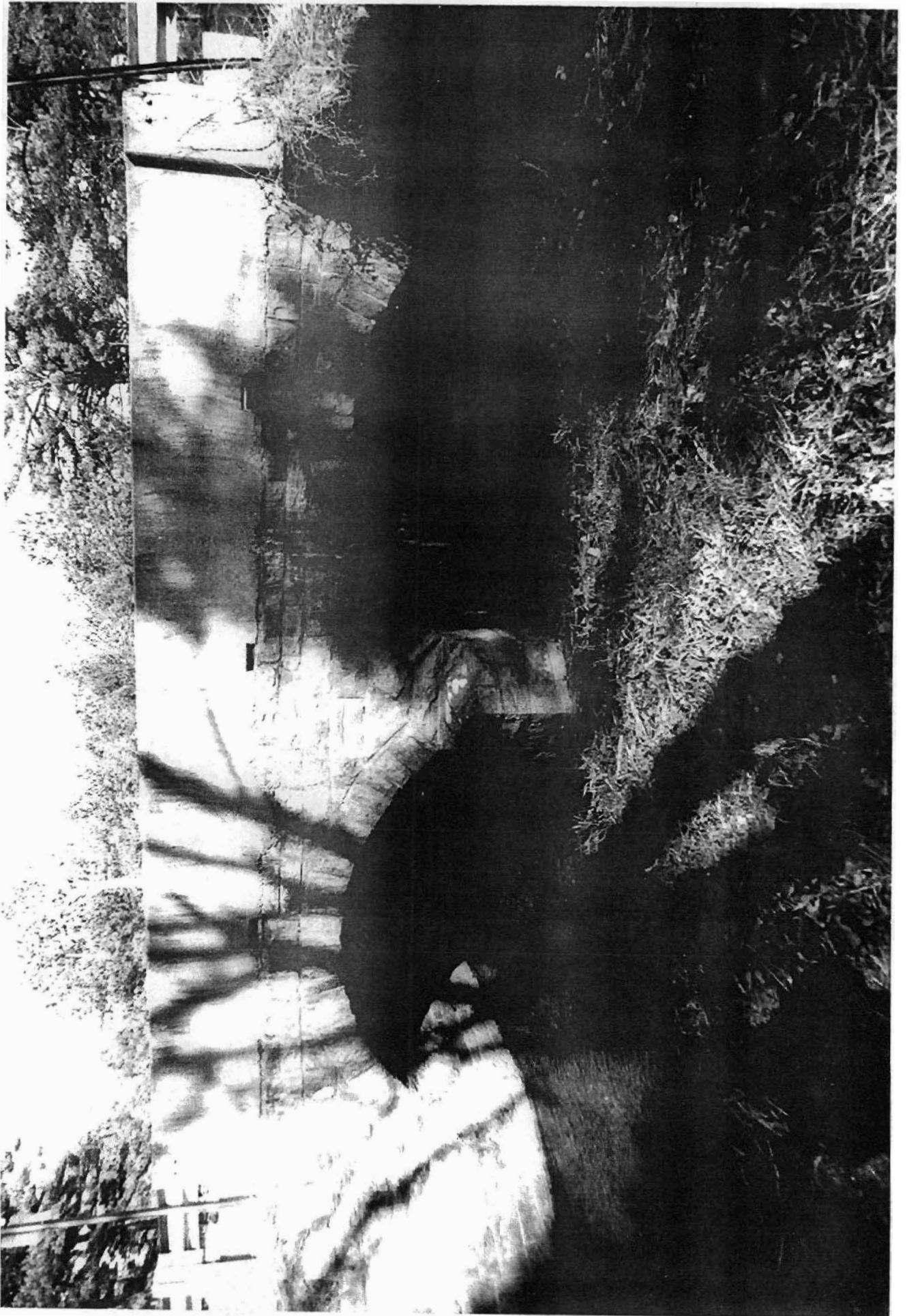
## National Register of Historic Places Continuation Sheet

Section number   8   Page   1  

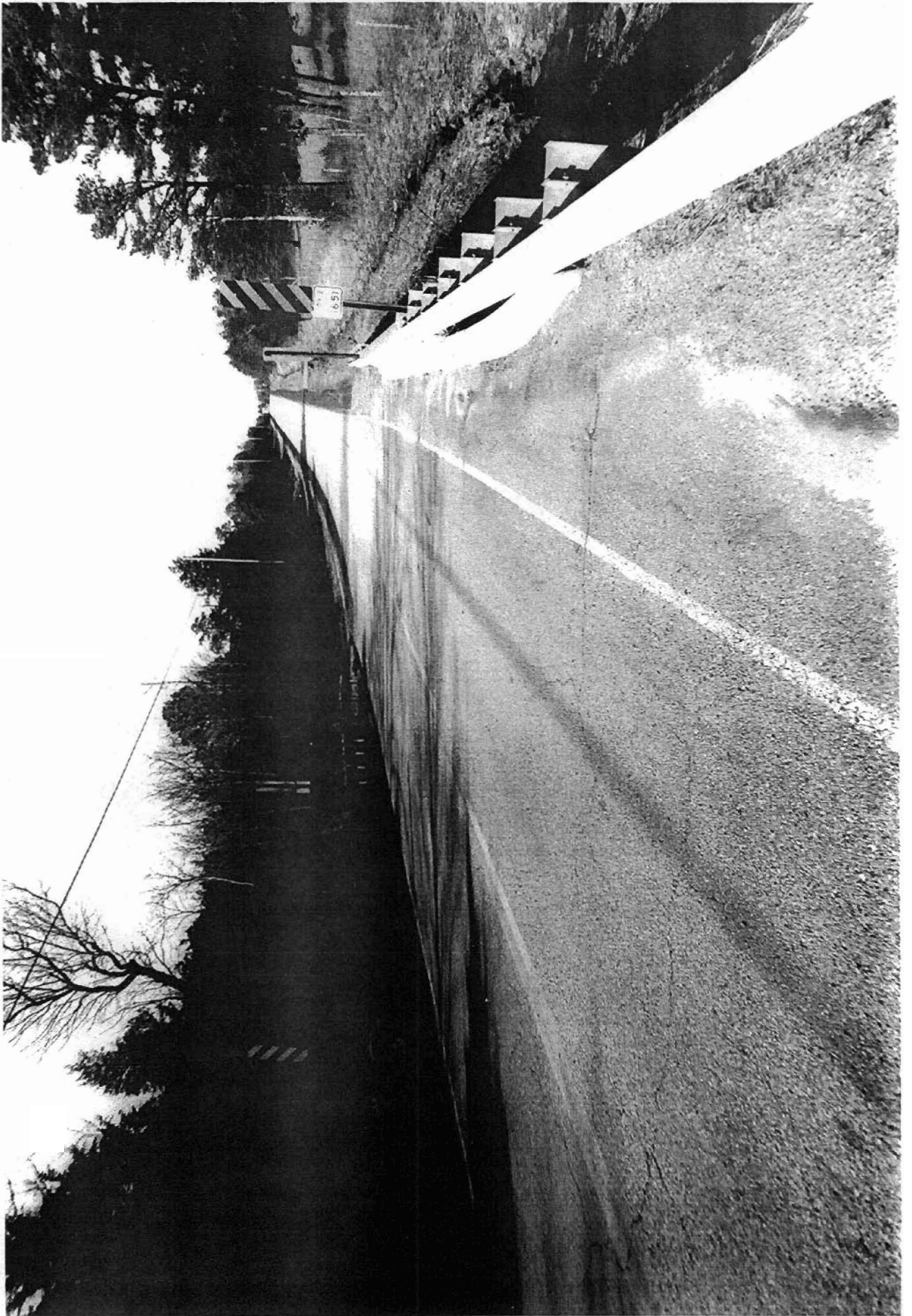
---

### Significance

Constructed in 1936, the Cove Creek Tributary Bridge is associated with the *Arkansas Highway and Transportation Era* historic context and is of the stone masonry, closed spandrel arch type. Though the identity of its original designer does not survive, it was constructed in conjunction with the Arkansas State Highway Commission and thus may well have been designed by one of that state agency's engineers. Given its relatively intact condition it retains sufficient integrity to remain associated with its historic period and is thus locally eligible under Criterion C.







124  
150  
120  
110  
100  
90  
80  
70  
60  
50  
40  
30  
20  
10  
0  
10  
20  
30  
40  
50  
60  
70  
80  
90  
100  
110  
120  
130  
140  
150  
160  
170  
180  
190  
200  
210  
220  
230  
240  
250  
260  
270  
280  
290  
300  
310  
320  
330  
340  
350  
360  
370  
380  
390  
400  
410  
420  
430  
440  
450  
460  
470  
480  
490  
500  
510  
520  
530  
540  
550  
560  
570  
580  
590  
600  
610  
620  
630  
640  
650  
660  
670  
680  
690  
700  
710  
720  
730  
740  
750  
760  
770  
780  
790  
800  
810  
820  
830  
840  
850  
860  
870  
880  
890  
900  
910  
920  
930  
940  
950  
960  
970  
980  
990  
1000  
1010  
1020  
1030  
1040  
1050  
1060  
1070  
1080  
1090  
1100  
1110  
1120  
1130  
1140  
1150  
1160  
1170  
1180  
1190  
1200  
1210  
1220  
1230  
1240  
1250  
1260  
1270  
1280  
1290  
1300  
1310  
1320  
1330  
1340  
1350  
1360  
1370  
1380  
1390  
1400  
1410  
1420  
1430  
1440  
1450  
1460  
1470  
1480  
1490  
1500  
1510  
1520  
1530  
1540  
1550  
1560  
1570  
1580  
1590  
1600  
1610  
1620  
1630  
1640  
1650  
1660  
1670  
1680  
1690  
1700  
1710  
1720  
1730  
1740  
1750  
1760  
1770  
1780  
1790  
1800  
1810  
1820  
1830  
1840  
1850  
1860  
1870  
1880  
1890  
1900  
1910  
1920  
1930  
1940  
1950  
1960  
1970  
1980  
1990  
2000  
2010  
2020  
2030  
2040  
2050  
2060  
2070  
2080  
2090  
2100  
2110  
2120  
2130  
2140  
2150  
2160  
2170  
2180  
2190  
2200  
2210  
2220  
2230  
2240  
2250  
2260  
2270  
2280  
2290  
2300  
2310  
2320  
2330  
2340  
2350  
2360  
2370  
2380  
2390  
2400  
2410  
2420  
2430  
2440  
2450  
2460  
2470  
2480  
2490  
2500  
2510  
2520  
2530  
2540  
2550  
2560  
2570  
2580  
2590  
2600  
2610  
2620  
2630  
2640  
2650  
2660  
2670  
2680  
2690  
2700  
2710  
2720  
2730  
2740  
2750  
2760  
2770  
2780  
2790  
2800  
2810  
2820  
2830  
2840  
2850  
2860  
2870  
2880  
2890  
2900  
2910  
2920  
2930  
2940  
2950  
2960  
2970  
2980  
2990  
3000  
3010  
3020  
3030  
3040  
3050  
3060  
3070  
3080  
3090  
3100  
3110  
3120  
3130  
3140  
3150  
3160  
3170  
3180  
3190  
3200  
3210  
3220  
3230  
3240  
3250  
3260  
3270  
3280  
3290  
3300  
3310  
3320  
3330  
3340  
3350  
3360  
3370  
3380  
3390  
3400  
3410  
3420  
3430  
3440  
3450  
3460  
3470  
3480  
3490  
3500  
3510  
3520  
3530  
3540  
3550  
3560  
3570  
3580  
3590  
3600  
3610  
3620  
3630  
3640  
3650  
3660  
3670  
3680  
3690  
3700  
3710  
3720  
3730  
3740  
3750  
3760  
3770  
3780  
3790  
3800  
3810  
3820  
3830  
3840  
3850  
3860  
3870  
3880  
3890  
3900  
3910  
3920  
3930  
3940  
3950  
3960  
3970  
3980  
3990  
4000  
4010  
4020  
4030  
4040  
4050  
4060  
4070  
4080  
4090  
4100  
4110  
4120  
4130  
4140  
4150  
4160  
4170  
4180  
4190  
4200  
4210  
4220  
4230  
4240  
4250  
4260  
4270  
4280  
4290  
4300  
4310  
4320  
4330  
4340  
4350  
4360  
4370  
4380  
4390  
4400  
4410  
4420  
4430  
4440  
4450  
4460  
4470  
4480  
4490  
4500  
4510  
4520  
4530  
4540  
4550  
4560  
4570  
4580  
4590  
4600  
4610  
4620  
4630  
4640  
4650  
4660  
4670  
4680  
4690  
4700  
4710  
4720  
4730  
4740  
4750  
4760  
4770  
4780  
4790  
4800  
4810  
4820  
4830  
4840  
4850  
4860  
4870  
4880  
4890  
4900  
4910  
4920  
4930  
4940  
4950  
4960  
4970  
4980  
4990  
5000  
5010  
5020  
5030  
5040  
5050  
5060  
5070  
5080  
5090  
5100  
5110  
5120  
5130  
5140  
5150  
5160  
5170  
5180  
5190  
5200  
5210  
5220  
5230  
5240  
5250  
5260  
5270  
5280  
5290  
5300  
5310  
5320  
5330  
5340  
5350  
5360  
5370  
5380  
5390  
5400  
5410  
5420  
5430  
5440  
5450  
5460  
5470  
5480  
5490  
5500  
5510  
5520  
5530  
5540  
5550  
5560  
5570  
5580  
5590  
5600  
5610  
5620  
5630  
5640  
5650  
5660  
5670  
5680  
5690  
5700  
5710  
5720  
5730  
5740  
5750  
5760  
5770  
5780  
5790  
5800  
5810  
5820  
5830  
5840  
5850  
5860  
5870  
5880  
5890  
5900  
5910  
5920  
5930  
5940  
5950  
5960  
5970  
5980  
5990  
6000  
6010  
6020  
6030  
6040  
6050  
6060  
6070  
6080  
6090  
6100  
6110  
6120  
6130  
6140  
6150  
6160  
6170  
6180  
6190  
6200  
6210  
6220  
6230  
6240  
6250  
6260  
6270  
6280  
6290  
6300  
6310  
6320  
6330  
6340  
6350  
6360  
6370  
6380  
6390  
6400  
6410  
6420  
6430  
6440  
6450  
6460  
6470  
6480  
6490  
6500  
6510  
6520  
6530  
6540  
6550  
6560  
6570  
6580  
6590  
6600  
6610  
6620  
6630  
6640  
6650  
6660  
6670  
6680  
6690  
6700  
6710  
6720  
6730  
6740  
6750  
6760  
6770  
6780  
6790  
6800  
6810  
6820  
6830  
6840  
6850  
6860  
6870  
6880  
6890  
6900  
6910  
6920  
6930  
6940  
6950  
6960  
6970  
6980  
6990  
7000  
7010  
7020  
7030  
7040  
7050  
7060  
7070  
7080  
7090  
7100  
7110  
7120  
7130  
7140  
7150  
7160  
7170  
7180  
7190  
7200  
7210  
7220  
7230  
7240  
7250  
7260  
7270  
7280  
7290  
7300  
7310  
7320  
7330  
7340  
7350  
7360  
7370  
7380  
7390  
7400  
7410  
7420  
7430  
7440  
7450  
7460  
7470  
7480  
7490  
7500  
7510  
7520  
7530  
7540  
7550  
7560  
7570  
7580  
7590  
7600  
7610  
7620  
7630  
7640  
7650  
7660  
7670  
7680  
7690  
7700  
7710  
7720  
7730  
7740  
7750  
7760  
7770  
7780  
7790  
7800  
7810  
7820  
7830  
7840  
7850  
7860  
7870  
7880  
7890  
7900  
7910  
7920  
7930  
7940  
7950  
7960  
7970  
7980  
7990  
8000  
8010  
8020  
8030  
8040  
8050  
8060  
8070  
8080  
8090  
8100  
8110  
8120  
8130  
8140  
8150  
8160  
8170  
8180  
8190  
8200  
8210  
8220  
8230  
8240  
8250  
8260  
8270  
8280  
8290  
8300  
8310  
8320  
8330  
8340  
8350  
8360  
8370  
8380  
8390  
8400  
8410  
8420  
8430  
8440  
8450  
8460  
8470  
8480  
8490  
8500  
8510  
8520  
8530  
8540  
8550  
8560  
8570  
8580  
8590  
8600  
8610  
8620  
8630  
8640  
8650  
8660  
8670  
8680  
8690  
8700  
8710  
8720  
8730  
8740  
8750  
8760  
8770  
8780  
8790  
8800  
8810  
8820  
8830  
8840  
8850  
8860  
8870  
8880  
8890  
8900  
8910  
8920  
8930  
8940  
8950  
8960  
8970  
8980  
8990  
9000  
9010  
9020  
9030  
9040  
9050  
9060  
9070  
9080  
9090  
9100  
9110  
9120  
9130  
9140  
9150  
9160  
9170  
9180  
9190  
9200  
9210  
9220  
9230  
9240  
9250  
9260  
9270  
9280  
9290  
9300  
9310  
9320  
9330  
9340  
9350  
9360  
9370  
9380  
9390  
9400  
9410  
9420  
9430  
9440  
9450  
9460  
9470  
9480  
9490  
9500  
9510  
9520  
9530  
9540  
9550  
9560  
9570  
9580  
9590  
9600  
9610  
9620  
9630  
9640  
9650  
9660  
9670  
9680  
9690  
9700  
9710  
9720  
9730  
9740  
9750  
9760  
9770  
9780  
9790  
9800  
9810  
9820  
9830  
9840  
9850  
9860  
9870  
9880  
9890  
9900  
9910  
9920  
9930  
9940  
9950  
9960  
9970  
9980  
9990  
10000

ARIZONA  
7.5 MINUTE SERIES (TOPOGRAPHIC)  
93° 37' 30" W  
35° 15' N

1.510,000 FEET  
41  
40  
39  
38  
37  
36  
35  
34  
33  
32  
31  
30  
29  
28  
27  
26  
25  
24  
23  
22  
21  
20  
19  
18  
17  
16  
15  
14  
13  
12  
11  
10  
9  
8  
7  
6  
5  
4  
3  
2  
1  
0  
1  
2  
3  
4  
5  
6  
7  
8  
9  
10  
11  
12  
13  
14  
15  
16  
17  
18  
19  
20  
21  
22  
23  
24  
25  
26  
27  
28  
29  
30  
31  
32  
33  
34  
35  
36  
37  
38  
39  
40  
41  
42  
43  
44  
45  
46  
47  
48  
49  
50  
51  
52  
53  
54  
55  
56  
57  
58  
59  
60  
61  
62  
63  
64  
65  
66  
67  
68  
69  
70  
71  
72  
73  
74  
75  
76  
77  
78  
79  
80  
81  
82  
83  
84  
85  
86  
87  
88  
89  
90  
91  
92  
93  
94  
95  
96  
97  
98  
99  
100  
101  
102  
103  
104  
105  
106  
107  
108  
109  
110  
111  
112  
113  
114  
115  
116  
117  
118  
119  
120  
121  
122  
123  
124  
125  
126  
127  
128  
129  
130  
131  
132  
133  
134  
135  
136  
137  
138  
139  
140  
141  
142  
143  
144  
145  
146  
147  
148  
149  
150  
151  
152  
153  
154  
155  
156  
157  
158  
159  
160  
161  
162  
163  
164  
165  
166  
167  
168  
169  
170  
171  
172  
173  
174  
175  
176  
177  
178  
179  
180  
181  
182  
183  
184  
185  
186  
187  
188  
189  
190  
191  
192  
193  
194  
195  
196  
197  
198  
199  
200  
201  
202  
203  
204  
205  
206  
207  
208  
209  
210  
211  
212  
213  
214  
215  
216  
217  
218  
219  
220  
221  
222  
223  
224  
225  
226  
227  
228  
229  
230  
231  
232  
233  
234  
235  
236  
237  
238  
239  
240  
241  
242  
243  
244  
245  
246  
247  
248  
249  
250  
251  
252  
253  
254  
255  
256  
257  
258  
259  
260  
261  
262  
263  
264  
265  
266  
267  
268  
269  
270  
271  
272  
273  
274  
275  
276  
277  
278  
279  
280  
281  
282  
283  
284  
285  
286  
287  
288  
289  
290  
291  
292  
293  
294  
295  
296  
297  
298  
299  
300  
301  
302  
303  
304  
305  
306  
307  
308  
309  
310  
311  
312  
313  
314  
315  
316  
317  
318  
319  
320  
321  
322  
323  
324  
325  
326  
327  
328  
329  
330  
331  
332  
333  
334  
335  
336  
337  
338  
339  
340  
341  
342  
343  
344  
345  
346  
347  
348  
349  
350  
351  
352  
353  
354  
355  
356  
357  
358  
359  
360  
361  
362  
363  
364  
365  
366  
367  
368  
369  
370  
371  
372  
373  
374  
375  
376  
377  
378  
379  
380  
381  
382  
383  
384  
385  
386  
387  
388  
389  
390  
391  
392  
393  
394  
395  
396  
397  
398  
399  
400  
401  
402  
403  
404  
405  
406  
407  
408  
409  
410  
411  
412  
413  
414  
415  
416  
417  
418  
419  
420  
421  
422  
423  
424  
425  
426  
427  
428  
429  
430  
431  
432  
433  
434  
435  
436  
437  
438  
439  
440  
441  
442  
443  
444  
445  
446  
447  
448  
449  
450  
451  
452  
453  
454  
455  
456  
457  
458  
459  
460  
461  
462  
463  
464  
465  
466  
467  
468  
469  
470  
471  
472  
473  
474  
475  
476  
477  
478  
479  
480  
481  
482  
483  
484  
485  
486  
487  
488  
489  
490  
491  
492  
493  
494  
495  
496  
497  
498  
499  
500  
501  
502  
503  
504  
505  
506  
507  
508  
509  
510  
511  
512  
513  
514  
515  
516  
517  
518  
519  
520  
521  
522  
523  
524  
525  
526  
527  
528  
529  
530  
531  
532  
533  
534  
535  
536  
537  
538  
539  
540  
541  
542  
543  
544  
545  
546  
547  
548  
549  
550  
551  
552  
553  
554  
555  
556  
557  
558  
559  
560  
561  
562  
563  
564  
565  
566  
567  
568  
569  
570  
571  
572  
573  
574  
575  
576  
577  
578  
579  
580  
581  
582  
583  
584  
585  
586  
587  
588  
589  
590  
591  
592  
593  
594  
595  
596  
597  
598  
599  
600  
601  
602  
603  
604  
605  
606  
607  
608  
609  
610  
611  
612  
613  
614  
615  
616  
617  
618  
619  
620  
621  
622  
623  
624  
625  
626  
627  
628  
629  
630  
631  
632  
633  
634  
635  
636  
637  
638  
639  
640  
641  
642  
643  
644  
645  
646  
647  
648  
649  
650  
651  
652  
653  
654  
655  
656  
657  
658  
659  
660  
661  
662  
663  
664  
665  
666  
667  
668  
669  
670  
671  
672  
673  
674  
675  
676  
677  
678  
679  
680  
681  
682  
683  
684  
685  
686  
687  
688  
689  
690  
691  
692  
693  
694  
695  
696  
697  
698  
699  
700  
701  
702  
703  
704  
705  
706  
707  
708  
709  
710  
711  
712  
713  
714  
715  
716  
717  
718  
719  
720  
721  
722  
723  
724  
725  
726  
727  
728  
729  
730  
731  
732  
733  
734  
735  
736  
737  
738  
739  
740  
741  
742  
743  
744  
745  
746  
747  
748  
749  
750  
751  
752  
753  
754  
755  
756  
757  
758  
759  
760  
761  
762  
763  
764  
765  
766  
767  
768  
769  
770  
771  
772  
773  
774  
775  
776  
777  
778  
779  
780  
781  
782  
783  
784  
785  
786  
787  
788  
789  
790  
791  
792  
793  
794  
795  
796  
797  
798  
799  
800  
801  
802  
803  
804  
805  
806  
807  
808  
809  
810  
811  
812  
813  
814  
815  
816  
817  
818  
819  
820  
821  
822  
823  
824  
825  
826  
827  
828  
829  
830  
831  
832  
833  
834  
835  
836  
837  
838  
839  
840  
841  
842  
843  
844  
845  
846  
847  
848  
849  
850  
851  
852  
853  
854  
855  
856  
857  
858  
859  
860  
861  
862  
863  
864  
865  
866  
867  
868  
869  
870  
871  
872  
873  
874  
875  
876  
877  
878  
879  
880  
881  
882  
883  
884  
885  
886  
887  
888  
889  
890  
891  
892  
893  
894  
895  
896  
897  
898  
899  
900  
901  
902  
903  
904  
905  
906  
907  
908  
909  
910  
911  
912  
913  
914  
915  
916  
917  
918  
919  
920  
921  
922  
923  
924  
925  
926  
927  
928  
929  
930  
931  
932  
933  
934  
935  
936  
937  
938  
939  
940  
941  
942  
943  
944  
945  
946  
947  
948  
949  
950  
951  
952  
953  
954  
955  
956  
957  
958  
959  
960  
961  
962  
963  
964  
965  
966  
967  
968  
969  
970  
971  
972  
973  
974  
975  
976  
977  
978  
979  
980  
981  
982  
983  
984  
985  
986  
987  
988  
989  
990  
991  
992  
993  
994  
995  
996  
997  
998  
999  
1000

12'30"

1200  
1100  
1000  
900  
800  
700  
600  
500  
400  
300  
200  
100  
0  
10  
20  
30  
40  
50  
60  
70  
80  
90  
100  
110  
120  
130  
140  
150  
160  
170  
180  
190  
200  
210  
220  
230  
240  
250  
260  
270  
280  
290  
300  
310  
320  
330  
340  
350  
360  
370  
380  
390  
400  
410  
420  
430  
440  
450  
460  
470  
480  
490  
500  
510  
520  
530  
540  
550  
560  
570  
580  
590  
600  
610  
620  
630  
640  
650  
660  
670  
680  
690  
700  
710  
720  
730  
740  
750  
760  
770  
780  
790  
800  
810  
820  
830  
840  
850  
860  
870  
880  
890  
900  
910  
920  
930  
940  
950  
960  
970  
980  
990  
1000

Rich Mountain  
Johnston  
Cove Creek  
Cove Lake  
Spillway Elev. 994  
Burnett Spring  
Brown Spring  
Turkey Knob  
Slate Hill  
Corley  
Flattop Cem.

330 000 FEET  
3999  
3998  
3997

12'30"