

Book Copy

United States Department of the Interior  
National Park Service

NATIONAL REGISTER OF HISTORIC PLACES  
REGISTRATION FORM

=====

1. Name of Property

historic name: Cove Creek Bridge

other name/site number: L00050

=====

2. Location

street & number: State Highway 309 at crossing of Cove Creek

not for publication: N/A

city/town: Corley vicinity: X

state: AR county: Logan code: AR 083 zip code: 72855

=====

3. Classification

Ownership of Property: Public-state

Category of Property: Structure

Number of Resources within Property:

Contributing	Noncontributing	
<u>      </u>	<u>      </u>	buildings
<u>      </u>	<u>      </u>	sites
<u>  1  </u>	<u>      </u>	structures
<u>      </u>	<u>      </u>	objects
<u>  1  </u>	<u>  0  </u>	Total

Number of contributing resources previously listed in the National Register: N/A

Name of related multiple property listing: Historic Bridges of Arkansas

=====  
4. State/Federal Agency Certification  
=====

As the designated authority under the National Historic Preservation Act of 1986, as amended, I hereby certify that this X nomination \_\_\_\_\_ request for determination of eligibility meets the documentation standards for registering properties in the National Register of Historic Places and meets the procedural and professional requirements set forth in 36 CFR Part 60. In my opinion, the property X meets \_\_\_\_\_ does not meet the National Register Criteria. \_\_\_\_\_ See continuation sheet.

Cathy A. Slater  
\_\_\_\_\_  
Signature of certifying official

4-11-95  
\_\_\_\_\_  
Date

\_\_\_\_\_  
Arkansas Historic Preservation Program  
State or Federal agency and bureau

In my opinion, the property \_\_\_\_\_ meets \_\_\_\_\_ does not meet the National Register criteria. \_\_\_\_\_ See continuation sheet.

\_\_\_\_\_  
Signature of commenting or other official

\_\_\_\_\_  
Date

\_\_\_\_\_  
State or Federal agency and bureau

=====  
5. National Park Service Certification  
=====

I, hereby certify that this property is:

- \_\_\_\_\_ entered in the National Register \_\_\_\_\_  
\_\_\_\_\_ See continuation sheet.
- \_\_\_\_\_ determined eligible for the \_\_\_\_\_  
National Register \_\_\_\_\_  
\_\_\_\_\_ See continuation sheet.
- \_\_\_\_\_ determined not eligible for the \_\_\_\_\_  
National Register \_\_\_\_\_
- \_\_\_\_\_ removed from the National Register \_\_\_\_\_
- \_\_\_\_\_ other (explain): \_\_\_\_\_

\_\_\_\_\_  
Signature of Keeper      Date  
   of Action

=====  
6. Function or Use  
=====

Historic: TRANSPORTATION      Sub: Road-related  
\_\_\_\_\_  
\_\_\_\_\_  
Current: TRANSPORTATION      Sub: Road-related  
\_\_\_\_\_  
\_\_\_\_\_

=====  
**7. Description**  
=====

Architectural Classification:

Other \_\_\_\_\_  
\_\_\_\_\_  
\_\_\_\_\_

Other Description: Masonry closed spandrel arch

Materials:	foundation	<u>Stone</u>	roof	<u>N/A</u>
	walls	<u>Concrete</u>	other	<u>Asphalt over concrete</u>

Describe present and historic physical appearance. X See continuation sheet.

=====  
**8. Statement of Significance**  
=====

Certifying official has considered the significance of this property in relation to other properties: Local.

Applicable National Register Criteria: C

Criteria Considerations (Exceptions): N/A

Areas of Significance: ENGINEERING  
\_\_\_\_\_  
\_\_\_\_\_

Period(s) of Significance: 1936-1939

Significant Dates: 1936

Significant Person(s): N/A  
\_\_\_\_\_

Cultural Affiliation: N/A

Architect/Builder: Unknown  
\_\_\_\_\_  
\_\_\_\_\_

State significance of property, and justify criteria, criteria considerations, and areas and periods of significance noted above.  
X See continuation sheet.

=====

**9. Major Bibliographical References**

=====

See "Historic Bridges of Arkansas" MPS Nomination, Section H.

\_\_\_ See continuation sheet.

Previous documentation on file (NPS):

- preliminary determination of individual listing (36 CFR 67) has been requested.
- previously listed in the National Register
- previously determined eligible by the National Register
- designated a National Historic Landmark
- recorded by Historic American Buildings Survey # \_\_\_\_\_
- recorded by Historic American Engineering Record # \_\_\_\_\_

Primary Location of Additional Data:

- X State historic preservation office
- Other state agency
- Federal agency
- Local government
- University
- Other -- Specify Repository: \_\_\_\_\_

=====

**10. Geographical Data**

=====

Acreage of Property: Less than one

UTM References:	Zone	Easting	Northing	Zone	Easting	Northing
A	<u>15</u>	<u>443250</u>	<u>3894420</u>	B	<u>15</u>	_____
C	<u>15</u>	_____	_____	D	<u>15</u>	_____

\_\_\_ See continuation sheet.

Verbal Boundary Description: \_\_\_ See continuation sheet.

Beginning at a point formed by the intersection of the southwestern edge of State Highway 309 with a perpendicular line running parallel with the northwestern end of the bridge and located approximately 25 feet to the northwest thereof, proceed southwesterly for a distance of approximately 25 feet to its intersection with a perpendicular line running parallel with the bridge's southwestern side; thence proceed southeasterly along said line for a distance of approximately 76 feet to its intersection with a perpendicular line; thence proceed northeasterly along said line for a distance of approximately 80.7 feet to its intersection with a perpendicular line; thence proceed northwesterly along said line for a distance of approximately 76 feet to its intersection with a perpendicular line; thence proceed southwesterly to the point of beginning.

Boundary Justification: \_\_\_ See continuation sheet.

— This boundary includes all the property historically associated with this resource.

=====

11. Form Prepared By

=====

Name/Title: Ken Story, National Register/Survey Coordinator

Organization: Arkansas Historic Preservation Program Date: 04/04/95

Street & Number: 323 Center Street, Suite 1500 Telephone: (501) 324-9880

City or Town: Little Rock State: AR Zip: 72201

United States Department of the Interior  
National Park Service

**National Register of Historic Places  
Continuation Sheet**

Section number   7   Page   1  

---

**Description**

Located on State Highway 309 at its crossing of Cove Creek (approximately .4 miles south east of County Road #52 where it intersects with State Highway 309), the Cove Creek Bridge is of the stone masonry, closed spandrel arch type. The two arches each span a distance of 13 feet and the overall length is 26 feet. The deck measures 27.7 feet in width and the overall width is 30.7 feet. The entire bridge is of structural stone masonry construction with a deck composed of asphalt over a concrete subsurface. A later solid concrete barrier runs along both sides of the deck.

United States Department of the Interior  
National Park Service

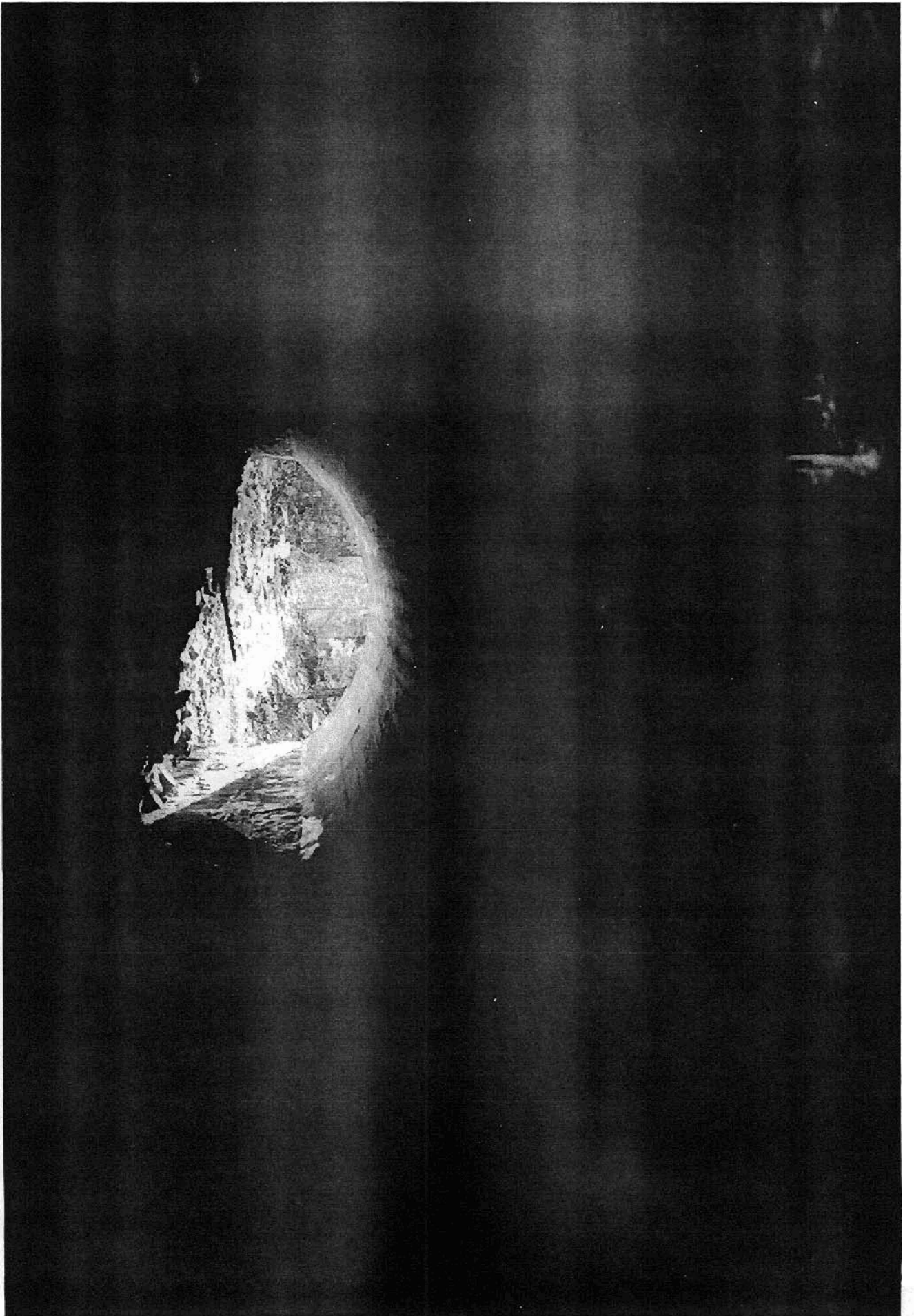
## National Register of Historic Places Continuation Sheet

Section number   8   Page   1  

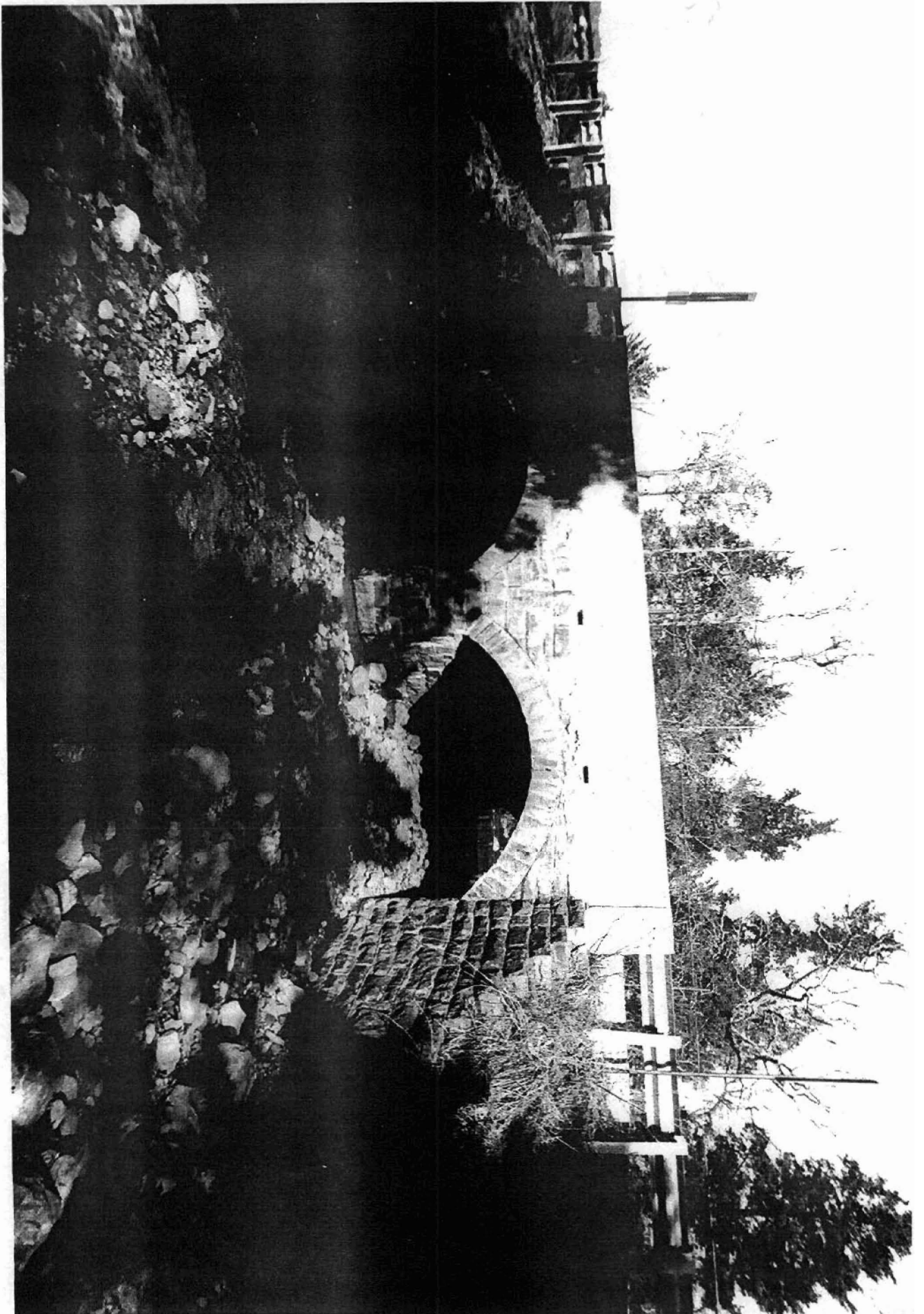
---

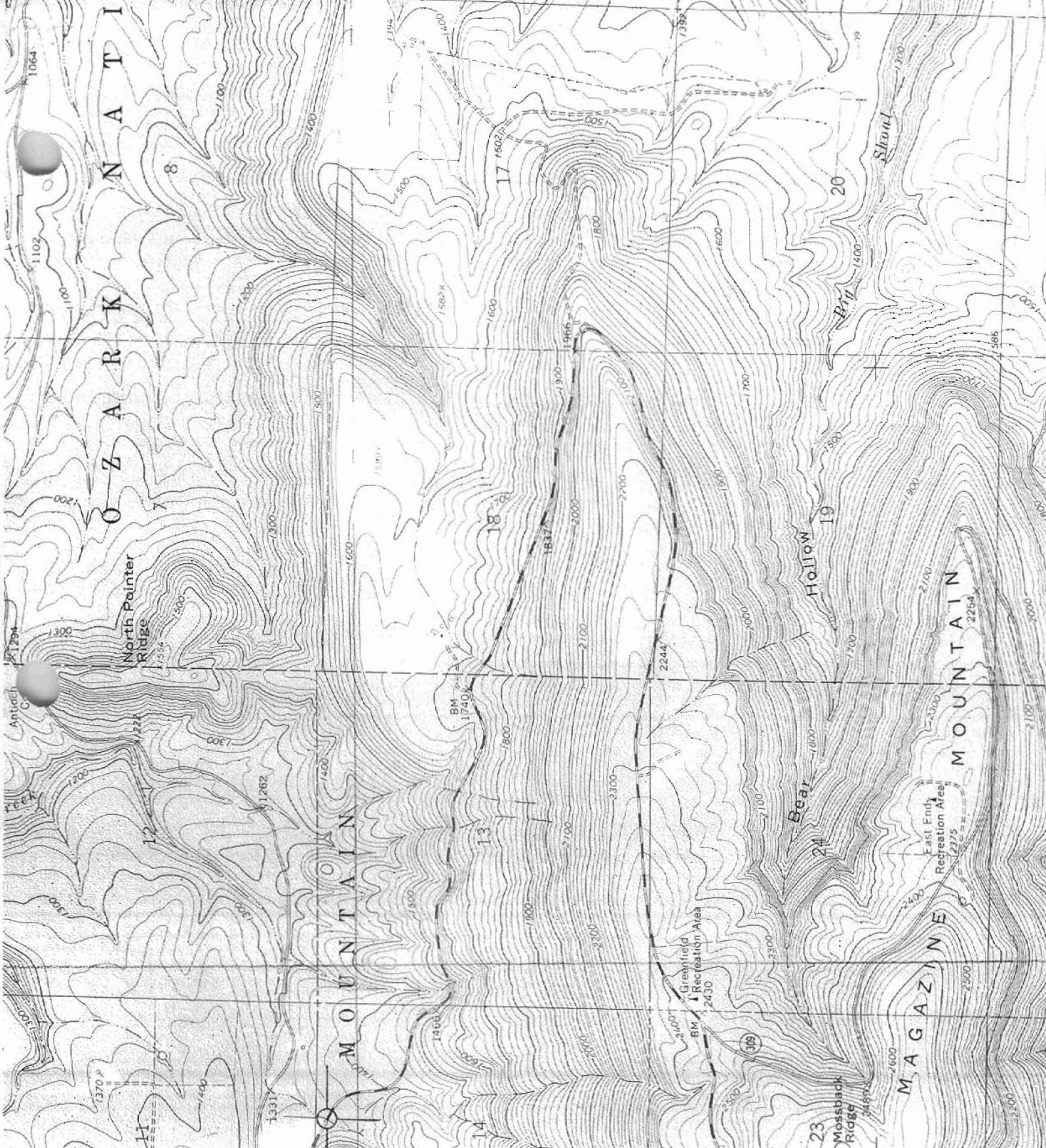
### Significance

Constructed in 1936, the Cove Creek Bridge is associated with the *Arkansas Highway and Transportation Era* historic context and is of the stone masonry, closed spandrel arch type. Though the identity of its original designer does not survive, it was constructed in conjunction with the Arkansas State Highway Commission and thus may well have been designed by one of that state agency's engineers. Given its relatively intact condition it retains sufficient integrity to remain associated with its historic period and is thus locally eligible under Criterion C.









7954 11 NW (BLUE MOUNTAIN)  
 PARIS 12 MI.  
 CORLEY 1.7 MI.

TOUR CRUISE  
 BRIDGE (CENTRE)  
 Hwy. 309  
 OVERLEY via  
 LOC. 200 Pa.  
 AL  
 5/443250/  
 3894420