

United States Department of the Interior
National Park Service

EXP 12/31/84

49-1135-61

National Register of Historic Places
Inventory—Nomination Form



Continuation sheet 200 Item number 1,2,4,6, & 10 Page 1

INDIVIDUAL DATA SHEET

General Description

Code: LN-066

Congressional District: Second

Name: Trimble House

Current Owner: Mrs. T. C. Trimble, Jr.

Address: 518 Center
Lonoke, Arkansas

Address: 518 Trimble
Lonoke, Arkansas

County: Lonoke

Architectural Information

Architectural Firm: Charles Thompson

Date of Construction: 1916

Stylistic Influence: Craftsman

Original Use: Residence

Present Use: Residence

Geographical Information

UTM Reference: 15 5991625/3848925 Acreage: Less than one

Verbal Boundary Description: Hicks and Reynolds Addition
Block 37, part South 1/4

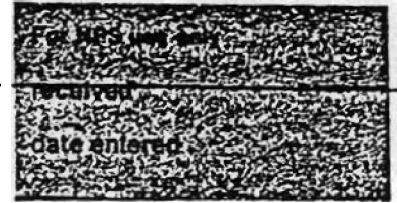
Condition

Excellent
 Good
 Fair

Deteriorated
 Ruins
 Unexposed

Unaltered
 Altered

National Register of Historic Places Inventory—Nomination Form



Continuation sheet

201

Item number 7 & 8

Page 2

Code: LN-066

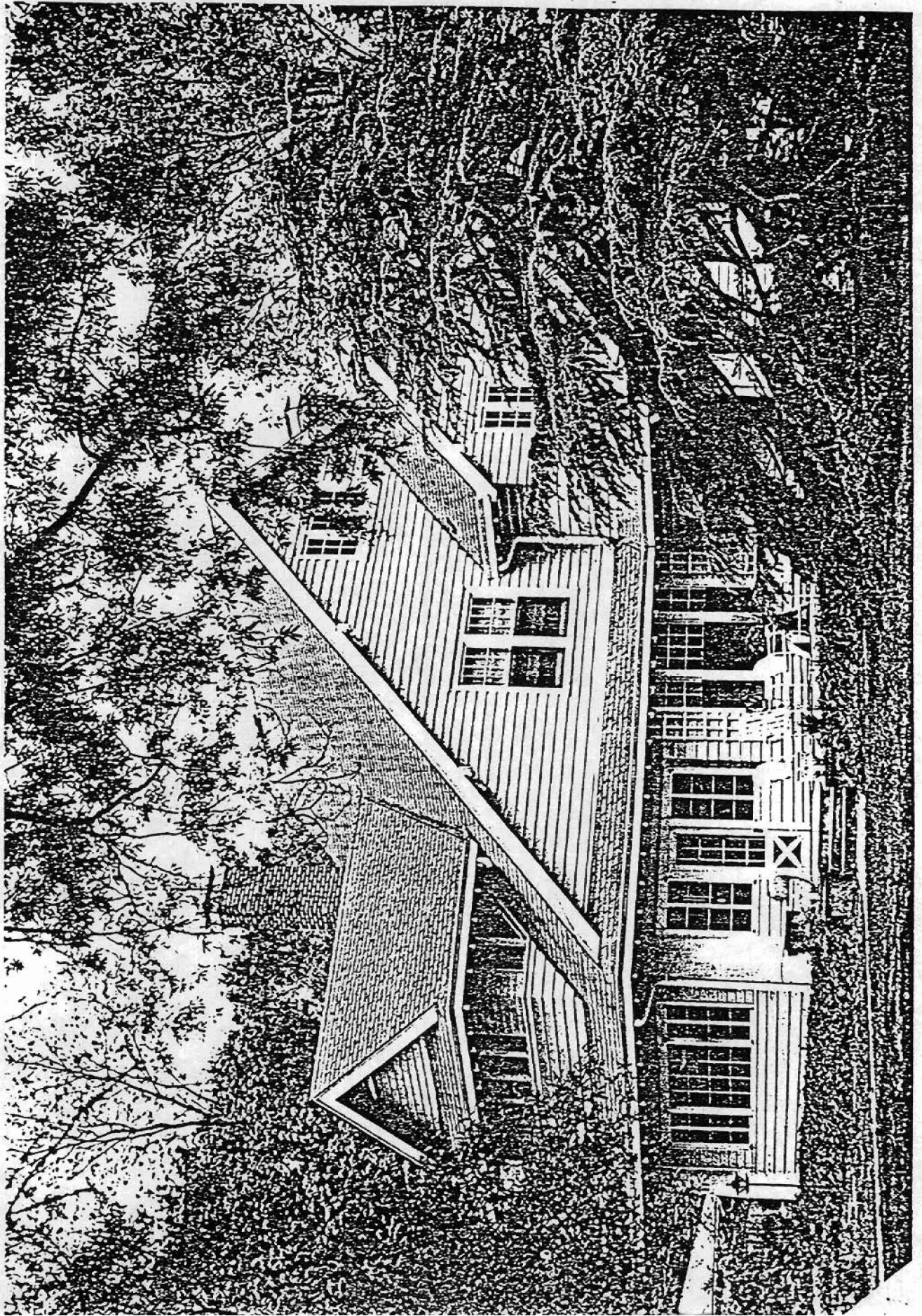
(518 Center, Lonoke, AR)

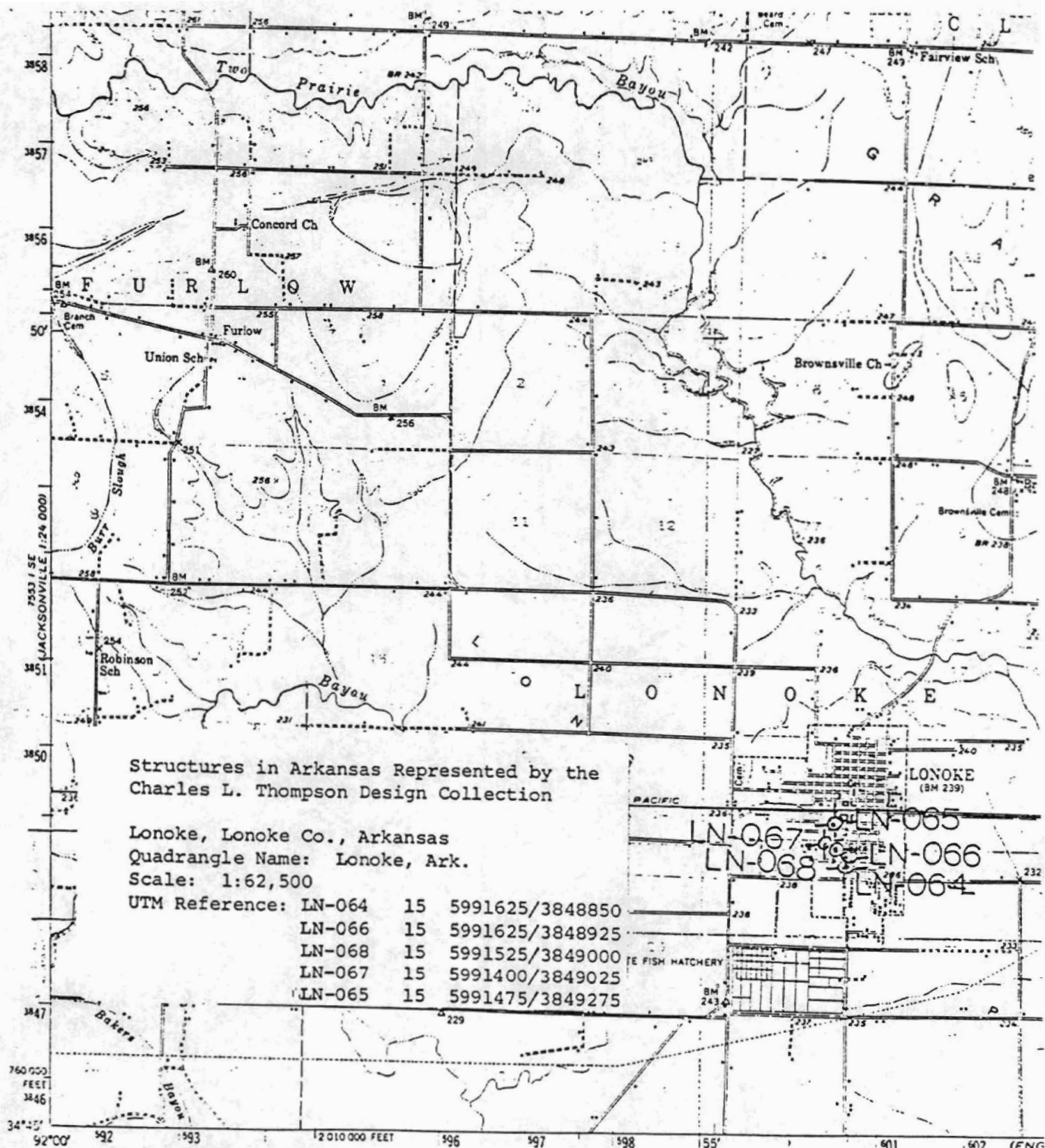
Physical Description

This large two-story house, faced with wide weatherboards, is located on a spacious corner lot surrounded by beautiful landscaping, green lawns and large spreading trees. Adding both unity and a picturesque aura is the huge front gable with pent roof which dominates the composition. Projecting to either side are gable end sections. Adding complexity and asymmetry to the roofscape is a somewhat lower cross gable projection on the front. The steep slant of these two intersecting gables lends a picturesque effect augmented by a third gable roof projection over the entrance. To the north a small porch lined with lattice work connects the house with an attached garage. A porch on the south end of the front elevation, now enclosed, is supported by oversized and simplified Tuscan-like stucco columns two of which support the triangular pediment of the small front porch as well. Large brackets line the eaves; wood shingles enrich the cross gable overhang on the south elevation. A variety of window sizes augments the informality of the whole. Most windows are sash with six-over-one lights.

Statement of Significance

Across the side street from the Wheat House (LN-064) in Lonoke, the Trimble House rests on a corner lot in a lush tree-shaded residential section of the town. This 1916 Charles L. Thompson design is unusual in relation to the firm's other work. Although the two-story frame house is large, the asymmetry and complexity of lines and the roofscape create a kind of cottage-like informality and charm. Two oversized columns support the now enclosed porch on the south end of the front elevation. The house features a variety of window styles, adding to the informality. Of particular interest is the original attached garage on the north end of the house.



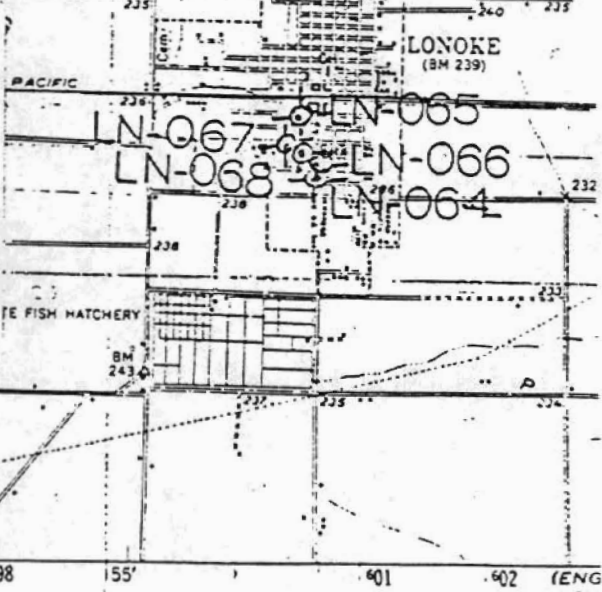


Structures in Arkansas Represented by the Charles L. Thompson Design Collection

Lonoke, Lonoke Co., Arkansas
 Quadrangle Name: Lonoke, Ark.
 Scale: 1:62,500

UTM Reference:

LN-064	15	5991625/3848850
LN-066	15	5991625/3848925
LN-068	15	5991525/3849000
LN-067	15	5991400/3849025
LN-065	15	5991475/3849275



SCOTT 1:25,000
 1953 AC

Mapped, edited, and published by the Geological Survey
 Control by Arkansas Geological Survey, USGS, and USCG&GS
 Culture and drainage in part compiled from aerial photographs
 Topography by plane-table methods 1937-38
 Culture revised 1990

Polygonic projection 1927 North American datum
 10,000-foot grid based on Arkansas coordinate system,
 south zone

Red tint indicates area in which only
 landmark buildings are shown
 1000-meter Universal Transverse Mercator grid ticks,
 zone 15, shown in blue



UTM GRID AND 1983 MAGNETIC NORTH
 DECLINATION AT CENTER OF SHEET



CONTOUR INT:
 DATUM IS ME

FOR SALE BY U. S. GEOLOGICAL SURVEY, DENVER
 AND BY THE ARKANSAS GEOLOGICAL COM
 A FOLDER DESCRIBING TOPOGRAPHIC MAPS