

United States Department of the Interior
National Park Service

EXP. 12/31/84

435-618

National Register of Historic Places
Inventory—Nomination Form

For NPS use only
received
Date entered

Continuation sheet

202

Item number 1, 2, 4, 6, & 10

Page 1

INDIVIDUAL DATA SHEET

General Description

Code: IN-067

Congressional District: Second

Name: Walls House

Current Owner: L. C. McCrary III

Address: 406 Jefferson
Lonoke, Arkansas

Address: 406 Jefferson
Lonoke, Arkansas

County: Lonoke

Architectural Information

Architectural Firm: Charles Thompson

Date of Construction: 1913

Stylistic Influence: Colonial Revival

Original Use: Residence

Present Use: Residence

Geographical Information

UTM Reference: 15 5991400/3849025

Acreage: Less than one

Verbal Boundary Description: Hicks and Reynolds Addition
Block 26, East part Lots 1, 2, 3, & all lots 9, 10,
11, 12

Condition

Excellent
 Good
 Fair

Deteriorated
 Ruins
 Unexposed

Unaltered
 Altered

United States Department of the Interior
National Park Service

National Register of Historic Places
Inventory—Nomination Form

WAT 12/31/04

For NPS use only
received
date entered

Continuation sheet

203

Item number 7 & 8

Page 2

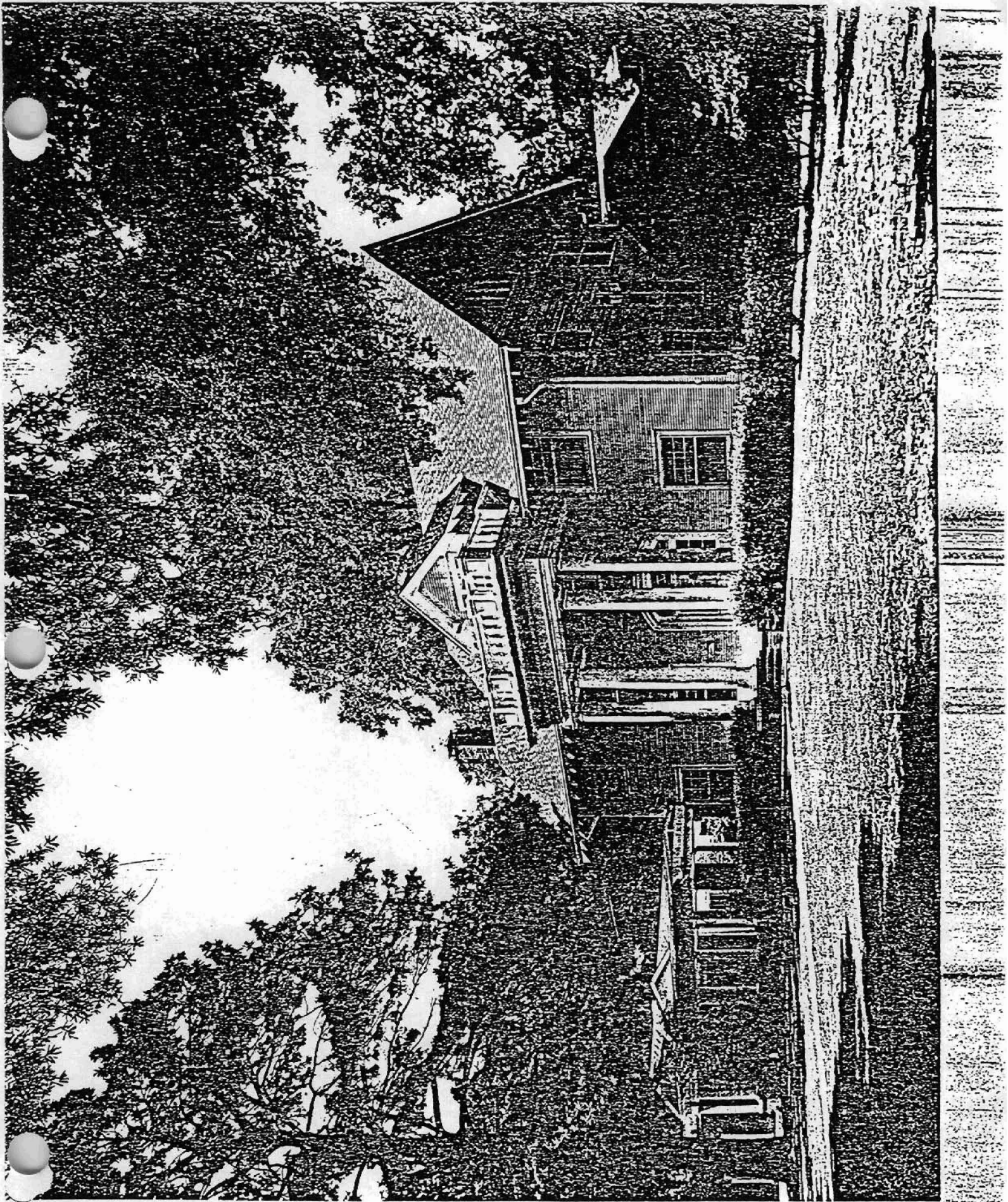
Code: LN-067 (409 Jefferson, Lonoke, AR)

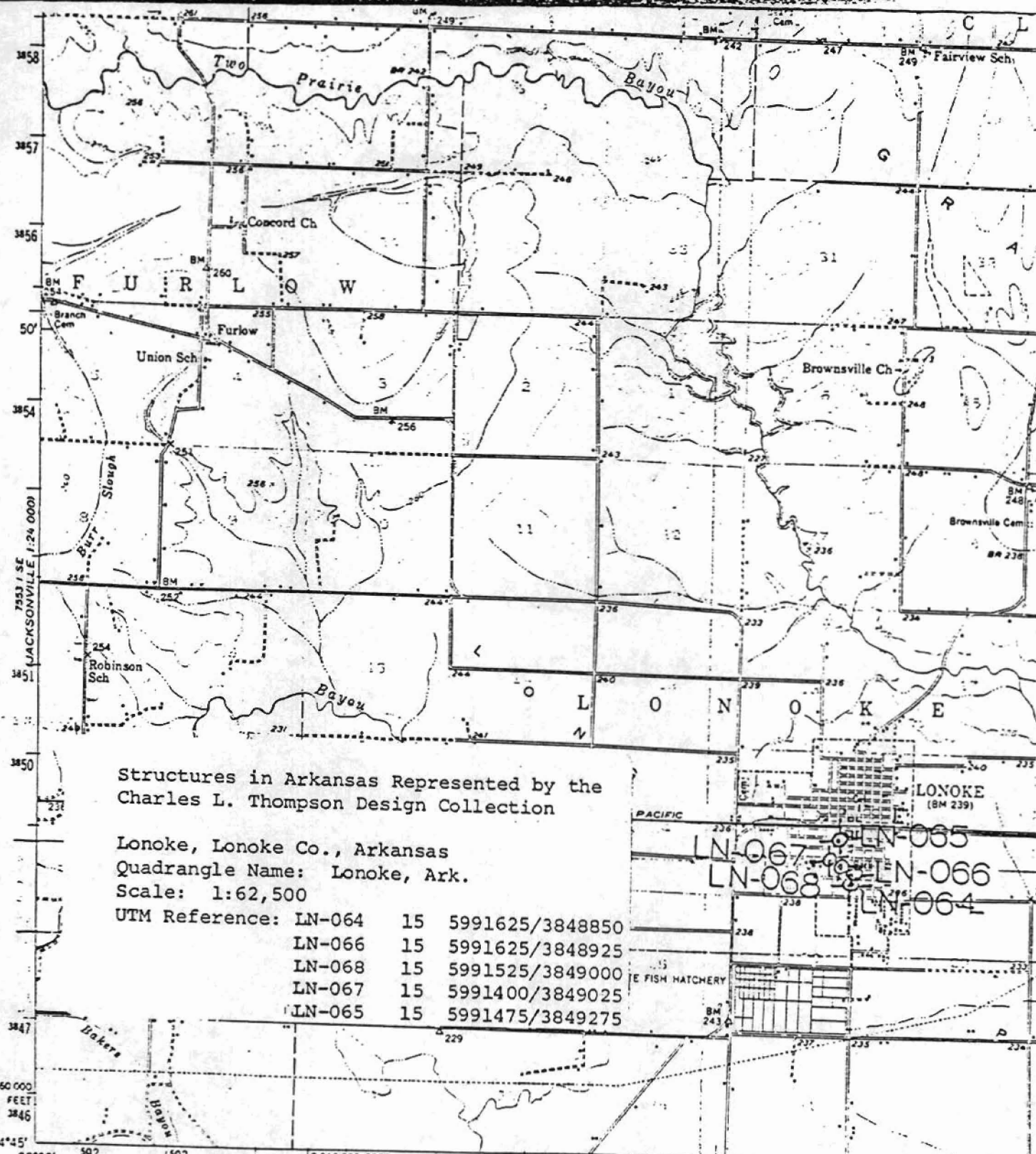
Physical Description

This stately Colonial Revival house projects qualities of formality and dignity in the older residential section of the small town of Lonoke, Arkansas. The large two-story structure, faced with narrow weatherboards, and capped by a gable roof is situated on a large corner lot shaded by large water oak trees. Highlighting the facade is a large flat-roofed portico featuring a full but unembellished entablature which is supported by four monumental Tuscan columns and enriched with an upper balustrade of urn-shaped balusters. Centered in the roof above this portico is a large gable roof dormer, with simple brackets and exposed rafters, which contains three multi-pane sash windows. The entrance is framed by a wide architrave composed of simple moldings and features a paneled front door with a long, semi-elliptical fanlight and multi-pane sidelights. Three narrow sash windows with multi-panes appear on the second floor above the entry. The portico is placed somewhat off-center on the facade and the south end of the front elevation originally had semi-enclosed porches on both the first and second floors. The wide sash windows have nine-over-one lights. An unusually handsome feature of this house is the long pergola walkway and the stylish detached garage to the south which is connected to the house by means of the walkway. Tuscan columns on high brick plinths support the pergola and the overhanging pedimented gable roof of the garage as well.

Statement of Significance

The Walls House in Lonoke is a Colonial Revival styled home designed by Charles L. Thompson in 1913. Dramatic in its small town setting, the Walls House is a large two-story structure set on a corner lot in Lonoke's residential section. Again, Thompson combined some Craftsman details with Colonial Revival styling. Wide overhanging eaves with exposed rafters and wide sash windows bespeak Craftsman influence. Marking the facade is a large flat-roofed portico supported by four monumental Tuscan columns. The portico is topped by a balustrade of urn-shaped balusters. A distinctive feature of the Walls House is a long pergola walkway and detached garage to the south of the house. The pergola with its overhanging pedimented gable roof is supported by Tuscan columns. The entrance portico, pergola and detached garage add a formal and unique note to the Walls House.





Structures in Arkansas Represented by the
Charles L. Thompson Design Collection

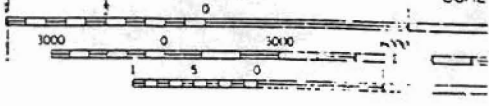
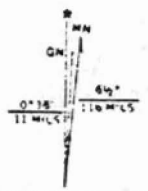
Lonoke, Lonoke Co., Arkansas
 Quadrangle Name: Lonoke, Ark.
 Scale: 1:62,500

UTM Reference:	Zone	Easting	Northing
LN-064	15	5991625	3848850
LN-066	15	5991625	3848925
LN-068	15	5991525	3849000
LN-067	15	5991400	3849025
LN-065	15	5991475	3849275



SCOTT 1:25,000
755 H AC

Mapped, edited, and published by the Geological Survey
 Control by Arkansas Geological Survey, USGS, and USC&GS
 Culture and drainage in part compiled from aerial photographs
 Topography by plane-table methods 1937-38
 Culture revised 1950
 Polyconic projection. 1927 North American datum
 10,000-foot grid based on Arkansas coordinate system,
 south zone
 Red tint indicates area in which only
 landmark buildings are shown
 1000-meter Universal Transverse Mercator grid ticks,
 zone 15, shown in blue



CONTOUR 11
 DATUM IS 1
 FOR SALE BY U S GEOLOGICAL SURVEY, DENY
 AND BY THE ARKANSAS GEOLOGICAL C
 A FOLDER DESCRIBING TOPOGRAPHIC MA