

United States Department of the Interior  
National Park Service

National Register of Historic Places  
Inventory—Nomination Form

EXP. 12/31/84  
42-51-4156-41\*

For NPS use only
received
date entered

Continuation sheet 204

Item number 1, 2, 4, 6 & 10 Page 1

INDIVIDUAL DATA SHEET

General Description

Code: LN-068

Congressional District: Second

Name: Shull House  
Address: 418 Park  
Lonoke, Arkansas

Current Owner: Harold, Richard and Oswald Shull  
and Mary Henderson;

County: Lonoke

Address: c/o O. L. Shull  
3516 S. Boston  
Ft. Smith, Arkansas

Architectural Information

Architectural Firm: Thompson and Harding

Date of Construction: 1917

Stylistic Influence: Craftsman

Original Use: Residence

Present Use: Residence

Geographical Information

UTM Reference: 15 5991525/3849000 Acreage: Less than one

Verbal Boundary Description: Hicks and Reynolds Addition  
Block 27, Lots 7, 8, 9

Condition

Excellent  
 Good  
 Fair

Deteriorated  
 Ruins  
 Unexposed

Unaltered  
 Altered

United States Department of the Interior  
National Park Service

National Register of Historic Places  
Inventory—Nomination Form

For NPS use only
inscribed
date entered

Continuation sheet 205

Item number 7 &amp; 8

Page 2

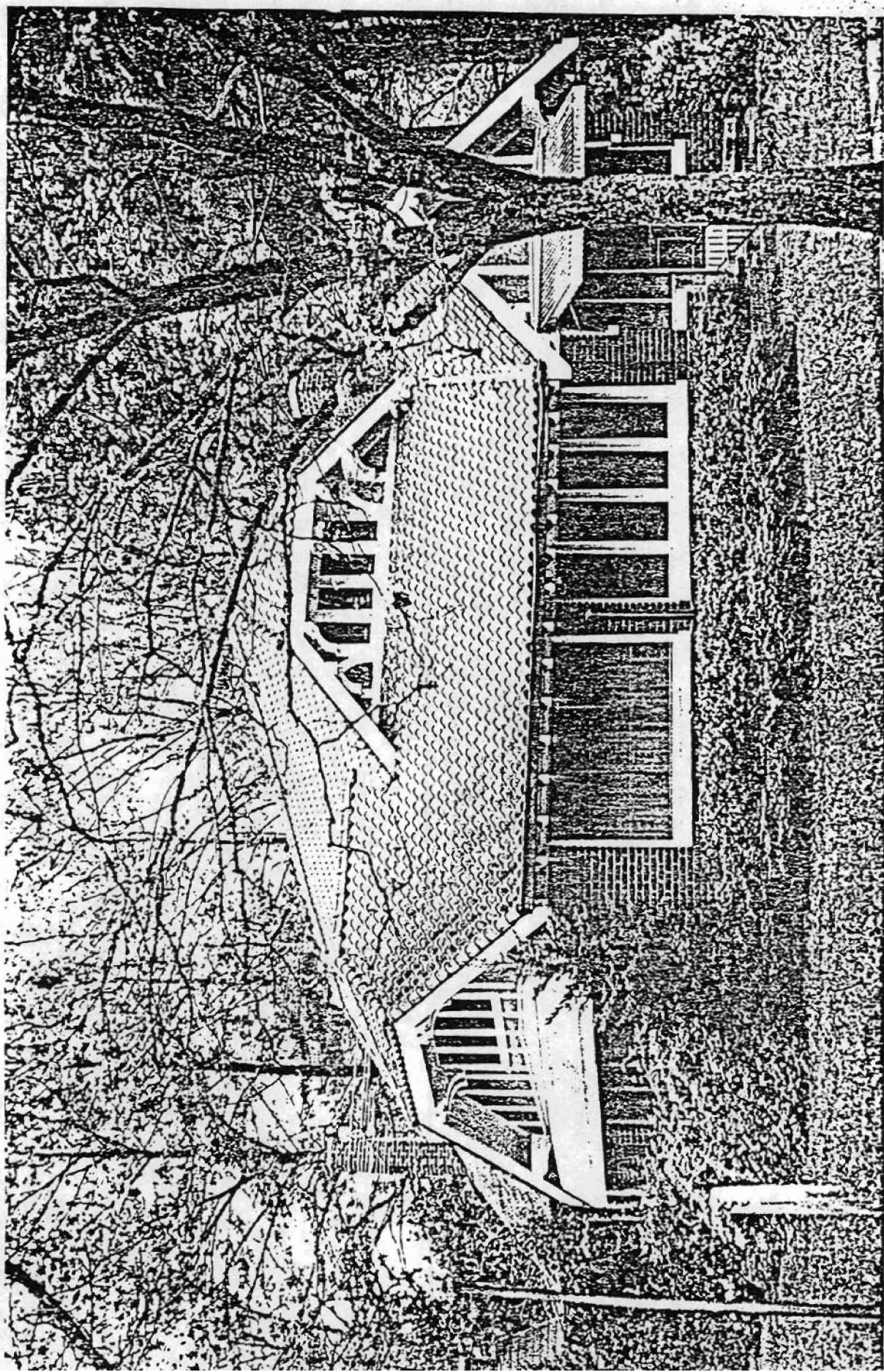
Code: LN-068 (418 Park, Lonoke, AR)

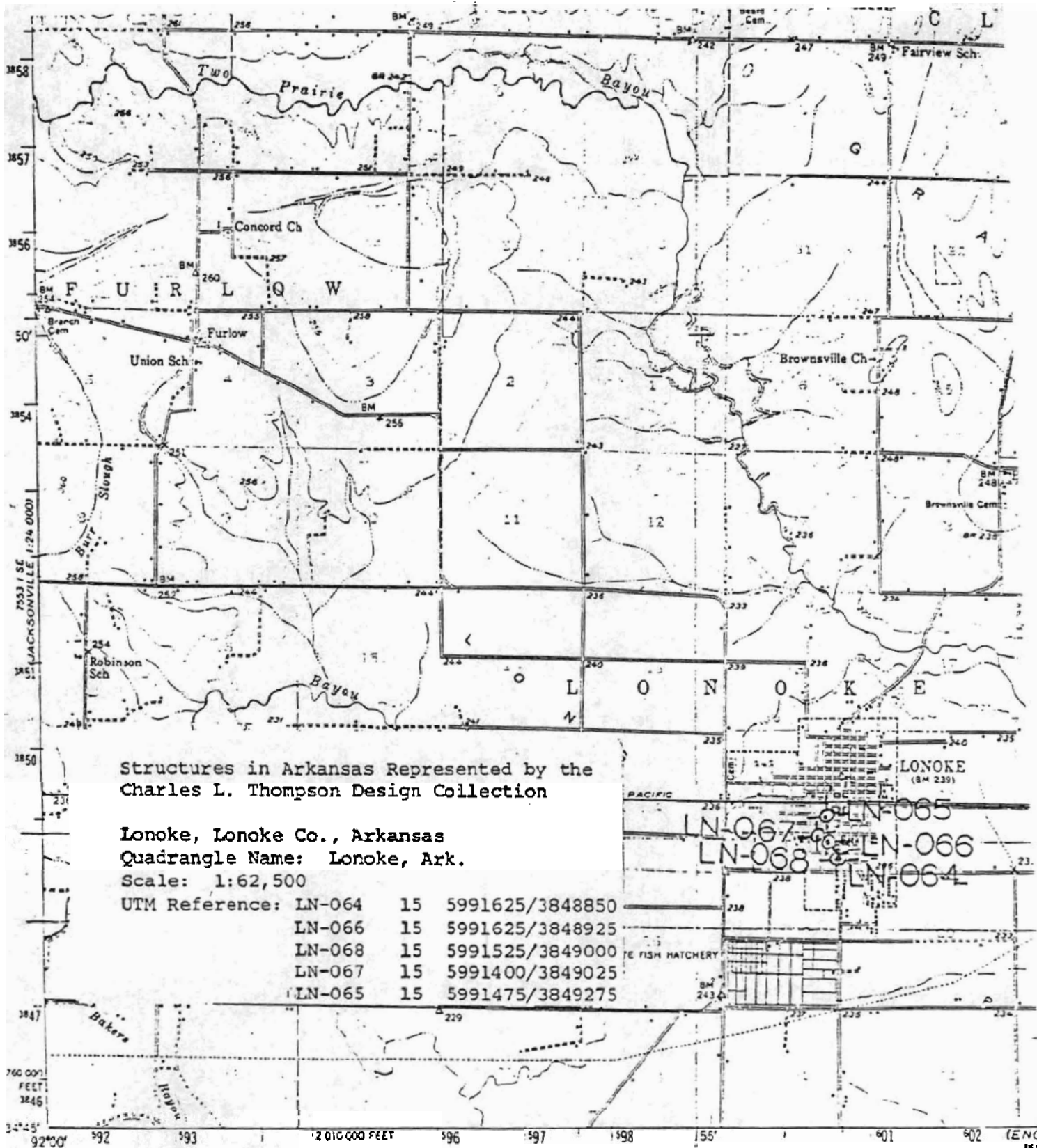
Physical Description

A variety of textures, natural materials and earth colors causes this handsome house to blend pleasantly into its lush green setting, well landscaped and ringed by towering shade trees. The one-and-one-half-story house features a prominent tile clipped gable end roof which swoops low to provide shady, overhanging eaves lined with exposed rafters. To one side, a cross gable projection forms the front porch and just to the rear of it, a large gable roof dormer appears. The steep slant of these two intersecting gable roofs on the front elevation lends a cottage-like, rather picturesque effect to the composition. The structure is faced with dark reddish brown brick and all the gables are enriched with stucco, half-timbering effects and large brackets. As in many other Thompson firm houses, the once open front porch supported by simple brick piers is now screened in. An unusual chimney which tapers inward as it rises marks the north elevation. Most windows in the house are multi-paned casement windows.

Statement of Significance

The Shull House in Lonoke, Arkansas was designed by the Thompson and Harding firm in 1917. Located across the street from the city park, the Shull House is a good example of the earthy comfortable feeling of Craftsman design. The dark red brick house features a tile clipped gable roof. Also contributing to the rich texturalism of the Shull House are the gables which feature stucco, half-timbering and large brackets. The setting, so abundant with large trees and vegetation provides a lush, dark atmosphere for this homey cottage-like house.





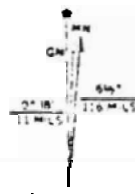
COTT 124 0001  
 7553 11 24 0001

Mapped, edited, and published by the Geological Survey  
 Control by Arkansas Geological Survey, USGS, and USC&GS  
 Culture and drainage in part compiled from aerial photographs  
 Topography by plane-table methods 1937-38  
 Culture revised 1950

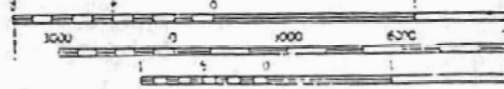
Polyconic projection 1927 North American datum  
 10,000-foot grid based on Arkansas coordinate system,  
 south zone

Pink indicates area in which only  
 landmark buildings are shown

1000-meter Universal Transverse Mercator grid ticks,  
 zone 15, shown in blue



UTM GRID AND 1960 MAGNETIC NORTH  
 DECLINATION AT CENTER OF SHEET



CONTOUR IN  
 5' IN 15 M

FOR SALE BY U. S. GEOLOGICAL SURVEY, DENVER  
 AND BY THE ARKANSAS GEOLOGICAL SURVEY  
 A FOLDER DESCRIBING TOPOGRAPHIC MAPS