

National Register of Historic Places
Inventory—Nomination Form

Continuation sheet 196

Item number 1, 2, 4, 6, & 10

Page 1

INDIVIDUAL DATA SHEET

General Description

Code: LN-064

Congressional District: Second

Name: Wheat House

Current Owner: Ed Wheat, Mrs. Lawson Taylor

Address: 600 Center

Address: 600 Center

Lonoke, Arkansas

Lonoke, Arkansas

County: Lonoke

Architectural Information

Architectural Firm: Charles Thompson

Date of Construction: ca. 1900-1910

Stylistic Influence: Colonial Revival

Original Use: Residence

Present Use: Residence

Geographical Information

UTM Reference: 15 5991625/3848850

Acreage: Less than one

Verbal Boundary Description: Hicks and Reynolds Addition
Block 44, East part

Condition

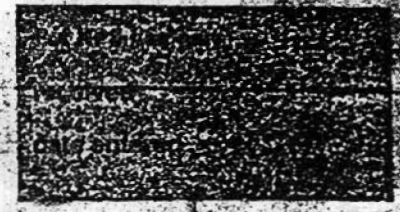
Excellent
 Good
 Fair

Deteriorated
 Ruins
 Unexposed

Unaltered
 Altered

National Register of Historic Places
Inventory—Nomination Form

MAR 12 1984



Continuation sheet 197

Item number 7 & 8

Page 2

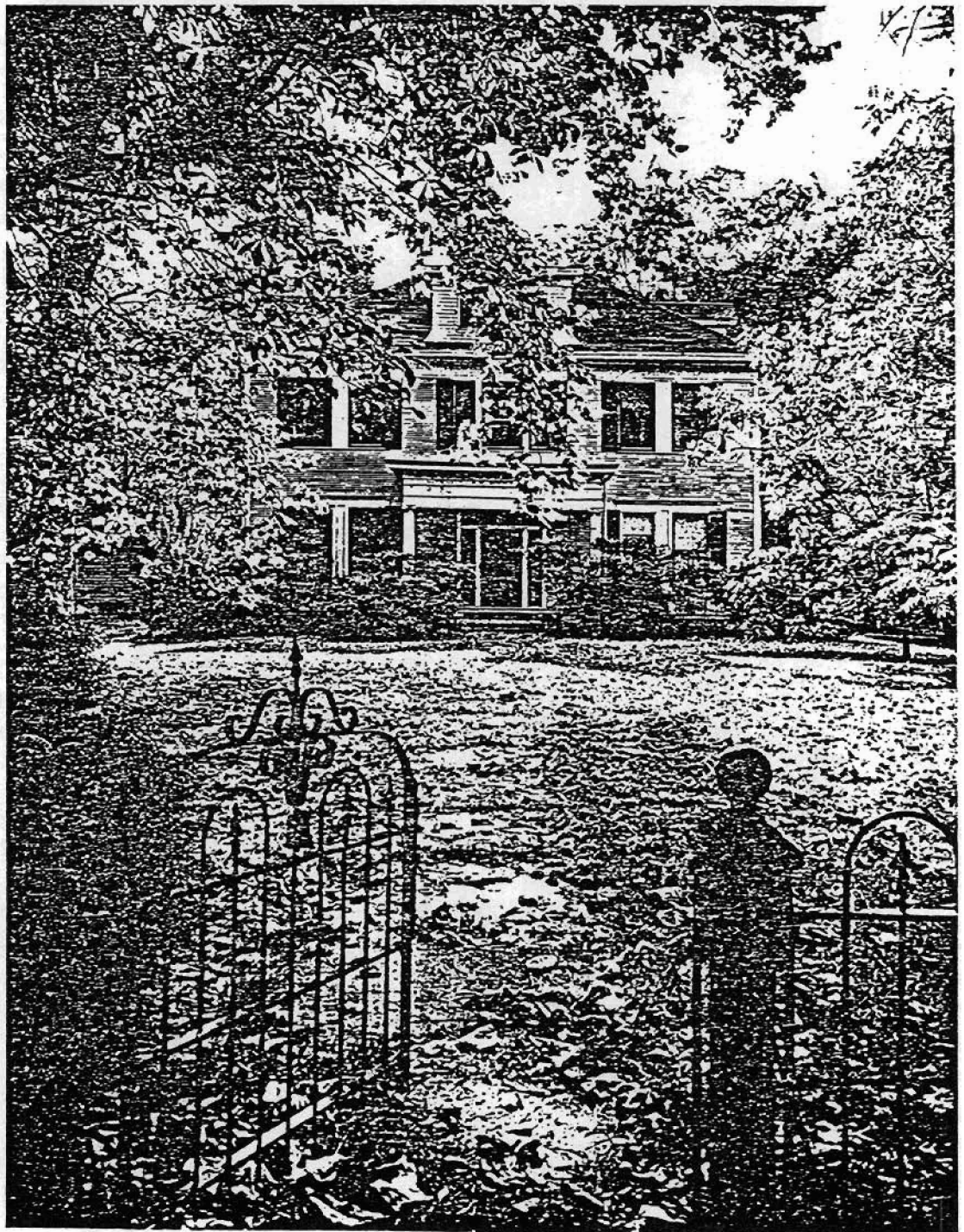
Code: LN-064 (600 Center, Lonoke, AR)

Physical Description

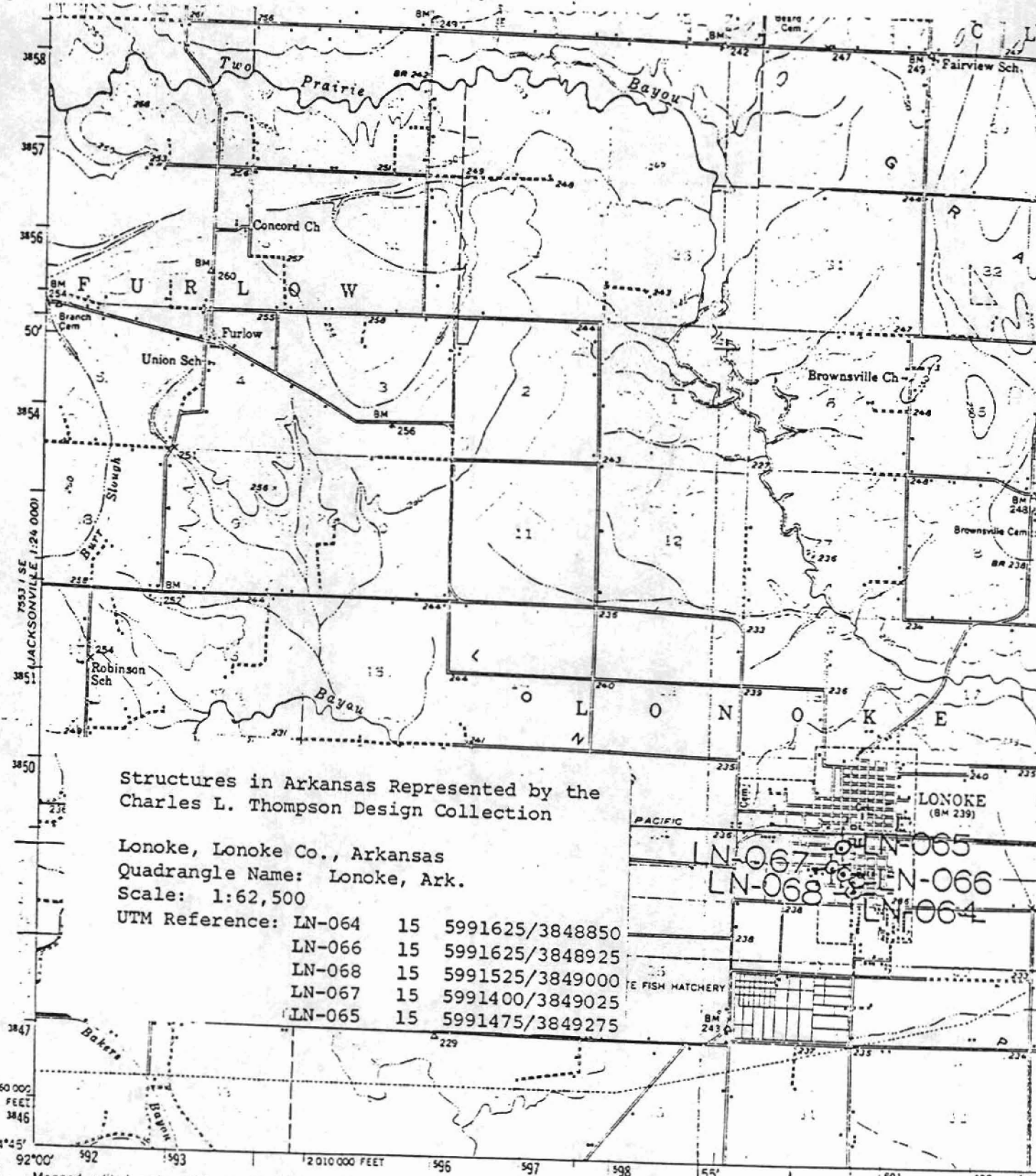
This large two-story house, faced with narrow weatherboards, is surrounded by an outstanding wooded setting a full block long. Accordingly, the scale of this house is uncharacteristically large for the firm, the details very simple, and the relation of solid to void is such that the voids dominate. With its balance and formality and relative lack of ornamentation, the house represents a simplified version of a Georgian Revival silhouette. Other distinctive features of this house are the central dormer with molded curved parapet, the pilaster cornerboards and the pairing of the large plate glass sash windows on the facade. Slender Tuscan columns support the flat roof porch with full entablature embellished with dentil molding at the base of the cornice. Dentil molding enriches the cornices of the lower story windows as well. The front gable is sheathed with shingles and contains two small windows which have muntins arranged in star shapes. The oak door has beveled glass windows, sidelights and transoms.

Statement of Significance

One of the largest and most impressive houses in the small town of Lonoke, the Georgian Revival Wheat House was designed by Charles L. Thompson ca. 1910. It is spectacularly sited on a half city block, with its large lawns shaded by towering trees and enclosed by an iron fence. The design is an unusually large-scale and simplified version of the Georgian Revival, with an unusual curved parapet featured on the central dormer. The quiet classical details and the large-scale massing combined with the spectacular setting create an especially appealing image of a gracious and inviting Southern home among the firm's residential designs.







Structures in Arkansas Represented by the
Charles L. Thompson Design Collection

Lonoke, Lonoke Co., Arkansas
Quadrangle Name: Lonoke, Ark.
Scale: 1:62,500

UTM Reference:

LN-064	15	5991625/3848850
LN-066	15	5991625/3848925
LN-068	15	5991525/3849000
LN-067	15	5991400/3849025
LN-065	15	5991475/3849275

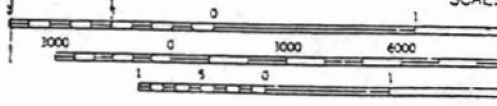
LN-067 LN-065
LN-068 LN-066
LN-064

SCOTT 1:24,000
1953 II NE

Mapped, edited, and published by the Geological Survey
Control by Arkansas Geological Survey, USGS, and USC&GS
Culture and drainage in part compiled from aerial photographs
Topography by plane-table methods 1937-38
Culture revised 1950
Polyconic projection. 1927 North American datum
10,000-foot grid based on Arkansas coordinate system,
south zone
Red tint indicates area in which only
landmark buildings are shown
1000-meter Universal Transverse Mercator grid ticks,
zone 15, shown in blue



UTM GRID AND 1983 MAGNETIC NORTH
DECLINATION AT CENTER OF SHEET



CONTOUR IN
DATUM IS M

FOR SALE BY U. S. GEOLOGICAL SURVEY, DENVER
AND BY THE ARKANSAS GEOLOGICAL CC
A FOLDER DESCRIBING TOPOGRAPHIC MAP