

United States Department of the Interior
National Park Service

National Register of Historic Places Registration Form

This form is for use in nominating or requesting determinations for individual properties and districts. See instructions in *How to Complete the National Register of Historic Places Registration Form* (National Register Bulletin 16A). Complete each item by marking "x" in the appropriate box or by entering the information requested. If an item does not apply to the property being documented, enter "N/A" for "not applicable." For functions, architectural classification, materials, and areas of significance, enter only categories and subcategories from the instructions. Place additional entries and narrative items on continuation sheets (NPS Form 10-900a). Use a typewriter, word processor, or computer, to complete all items.

1. Name of Property

historic name Parker House
other names/site number LI0078

2. Location

street & number HC 64 Box 5 not for publication
city or town Star City vicinity
state Arkansas code AR county Lincoln code 079 zip code 71667

3. State/Federal Agency Certification

As the designated authority under the National Historic Preservation Act, as amended, I hereby certify that this nomination request for determination of eligibility meets the documentation standards for registering properties in the National Register of Historic Places and meets the procedural and professional requirements set for in 36 CFR Part 60. In my opinion, the property meets does not meet the National Register criteria. I recommend that this property be considered significant nationally statewide locally. (See continuation sheet for additional comments.)
Cathy H. Slaton 4-24-00
Signature of certifying official/Title Date
Arkansas Historic Preservation Program
State or Federal agency and bureau

In my opinion, the property meets does not meet the National Register criteria. See Continuation sheet for additional comments.)

Signature of certifying official/Title Date

State or Federal agency and bureau

4. National Park Service Certification

I hereby certify that the property is:

<input type="checkbox"/> entered in the National Register. <input type="checkbox"/> See continuation sheet	Signature of the Keeper	Date of Action
<input type="checkbox"/> determined eligible for the National Register. <input type="checkbox"/> See continuation sheet	_____	_____
<input type="checkbox"/> determined not eligible for the National Register.	_____	_____
<input type="checkbox"/> removed from the National Register.	_____	_____
<input type="checkbox"/> other, (explain:)	_____	_____

Parker House
Name of Property

Lincoln County, Arkansas
County and State

5. Classification

Ownership of Property
(Check as many boxes as apply)

- private
- public-local
- public-State
- public-Federal

Category of Property
(Check only one box)

- building(s)
- district
- site
- structure
- object

Number of Resources within Property
(Do not include previously listed resources in count.)

Contributing	Noncontributing	
1		buildings
		sites
		structures
		objects
1	0	Total

Name of related multiple property listing
(Enter "N/A" if property is not part of a multiple property listing.)

N/A

Number of Contributing resources previously listed in the National Register

N/A

6. Function or Use

Historic Functions
(Enter categories from instructions)

Domestic: Single dwelling

Current Functions
(Enter categories from instructions)

Domestic: Single dwelling

7. Description

Architectural Classification
(Enter categories from instructions)

International
Mediterranean

Materials
(Enter categories from instructions)

foundation Concrete
walls Stucco
roof Tar
other

Narrative Description
(Describe the historic and current condition of the property on one or more continuation sheets.)

SEE CONTINUATION SHEET

Parker House

Name of Property

Lincoln County, Arkansas

County and State

8. Statement of Significance

Applicable National Register Criteria

(Mark "x" in one or more boxes for the criteria qualifying the property for National Register listing.)

- A Property is associated with events that have made a significant contribution to the broad patterns of our history.
- B Property is associated with the lives of persons significant in our past.
- C Property embodies the distinctive characteristics of a type, period, or method of construction or represents the work of a master, or possesses high artistic values, or represents a significant and distinguishable entity whose components lack individual distinction.
- D Property has yielded, or is likely to yield, information important in prehistory or history.

Criteria Considerations

(Mark "x" in all the boxes that apply.)

Property is:

- A owned by a religious institution or used for religious purposes.
- B removed from its original location.
- C moved from its original location.
- D a cemetery.
- E a reconstructed building, object, or structure.
- F a commemorative property
- G less than 50 years of age or achieved significance within the past 50 years.

Levels of Significance (local, state, national)

Local

Areas of Significance (Enter categories from instructions)

Architecture

Period of Significance

1927

Significant Dates

1927

Significant Person (Complete if Criterion B is marked)

N/A

Cultural Affiliation (Complete if Criterion D is marked)

N/A

Architect/Builder

Robert Preston Parker

Narrative Statement of Significance

(Explain the significance of the property on one or more continuation sheets.)

SEE CONTINUATION SHEET

9. Major Bibliographical References

Bibliography

(Cite the books, articles, and other sources used in preparing this form on one or more continuation sheets.)

Materials submitted by Detri McGehee, Star City, 2000.

Ann Nobles, Memphis, Tennessee. Interview by Detri McGehee, February 2000.

Previous documentation on file (NPS):

- preliminary determination of individual listing (36 CFR 67) has been requested
- previously listed in the National Register
- Previously determined eligible by the National Register
- designated a National Historic Landmark
- recorded by Historic American Buildings Survey

- recorded by Historic American Engineering
Record # _____

Primary location of additional data:

- State Historic Preservation Office
- Other State Agency
- Federal Agency
- Local Government
- University
- Other

Name of repository:

Parker House
Name of Property

Lincoln County, Arkansas
County and State

10. Geographical Data

Area of Property Five acres.

UTM References

(Place additional UTM references on a continuation sheet.)

1	<u>15</u>	<u>606580</u>	<u>3753100</u>	3	<u> </u>	<u> </u>	<u> </u>
	Zone	Easting	Northing		Zone	Easting	Northing
2	<u> </u>	<u> </u>	<u> </u>	4	<u> </u>	<u> </u>	<u> </u>

See continuation sheet

Verbal Boundary Description

(Describe the boundaries of the property on a continuation sheet.)

Degrees 13 minutes 40 seconds west 165.0 feet; thence south 89 degrees 3 minutes 35 seconds east 200.0 feet; thence north 00 degrees 3 minutes 40 seconds west 62.33 feet to the point of beginning; thence continue north 00 degrees 13 minutes 40 seconds west 41.75 feet; thence west 506.4 feet to the east right of way of U.W. Highway no. 425; thence continue along said right of way south 19 degrees 15 minutes 01 seconds west 147.14 feet to the point of beginning.

Boundary Justification

(Explain why the boundaries were selected on a continuation sheet.)

This nomination includes all of the property historically associated with the Parker House, Star City, Arkansas that retains its integrity.

11. Form Prepared By

name/title Detri McGehee/Edited by Holly Hope

organization Arkansas Historic Preservation Program date 03/06/00

street & number 1500 Tower Building, 323 Center Street telephone 501 324-9880

city or town Little Rock state AR zip code 72201

United States Department of the Interior
National Park Service

National Register of Historic Places Continuation Sheet

Section number 7 Page 1

SUMMARY

The Parker House is located on U.S. Highway 425 approximately two miles south of Star City. The house is sited on a slight rise up a dirt drive from the highway. The rural setting of the home makes its unique architectural style all the more striking. Constructed in 1927 by the home's owner, Robert Preston Parker, it is a blend of the International style with Mediterranean influences. The Parker House is composed of stucco over cypress framing. Its flat roof features wide, overhanging boxed eaves. The wooden eaves are currently sheathed in aluminum. Ribbons of plate glass awning and casement windows fenestrate the house. Another feature out of character for most homes in Star City is a full basement. The current owner comments that they never have trouble with flooding, which is an unusual circumstance for most homeowners. A courtyard garden to the rear of the house was enclosed to provide an extra room in 1958 and a wooden balustrade spanning stout concrete corner posts on the roof of the house was removed in 1966. Despite these changes to the house the original intent of the architect is still evident. It is thought that perhaps the overwhelming influence was Mediterranean due to the presence of Tuscan columns on the front porch and the rooftop balustrade, however with the removal of the railing the primary style leans toward the International style.

ELABORATION

Originally constructed in an H-plan the house is now more U-shaped. The front, western facade is lit by a ribbon of three one-light windows each topped with small awning transoms at the northern corner of the home. The center awning window is wider than the two surrounding casement openings. The concrete floored front porch is recessed under a flat roof supported by two Tuscan columns. Tuscan pilasters flank the two columns. A one-light door with sidelights faces north onto the porch. A ribbon of three one-over-one double-hung windows light the living room from the western wall, and a second one-light door with sidelights opens from the south wall of the porch. A second ribbon of three windows with awning transoms fenestrates the southern corner of the house. The flat-roofed second-story is centered above the first floor and is slightly wider than the front porch. Fenestration consists of two six-light casement windows flanking a pair of horizontal six-light casement windows. Stuccoed half-walls extend approximately three feet from the wall onto the roof beneath the two casement windows at the north and south corners. A stuccoed interior chimney with metal hood is placed at the south end of the upper floor roof.

A pair of one-light casement windows lights the southern elevation at the southwest corner. The center section of this elevation is stepped forward approximately three feet. Fenestration on the west wall of the extension consists of

United States Department of the Interior
National Park Service

National Register of Historic Places Continuation Sheet

Section number 7 Page 2

a single one-light window. The southern wall of the projection features two small one-light casement windows on either side of a ribbon of three casement windows topped with awning transoms. The southeast corner is lit by a second similar ribbon of three windows. The upper story contains a pair of short six-light casement windows at the southeast corner.

The eastern, rear elevation is fenestrated at the southeast corner by a ribbon of three windows and two small evenly spaced one-light casement windows. The center of this elevation once contained a courtyard garden. Now enclosed, the wall of the former courtyard is slightly recessed and is protected by a wide, flat overhang. The roof of the enclosed section is slightly lower than the surrounding wings to the north and south. A single-leaf wooden door flanked by two six-over-one double-hung windows of frosted glass is centered in this section. The northeast corner of the home is fenestrated by a single one-light casement window with a transom, and a pair of small, one-light casement windows adjacent to a fifteen-light French door. The upper floor mirrors the front facade with four casement windows. A tall, slender stucco interior chimney rises from the roof of the first floor at the northeast corner.

The basement is revealed on the northern elevation by the presence of a one-light hopper window and a coal chute in the foundation. The first floor is fenestrated at the northeast corner by three evenly spaced one-light casement windows. A single-leaf door with one-light is reached by three concrete steps. The door abuts a central projection stepped forward three feet as seen on the southern elevation. A ribbon of three windows with transoms is centered in this section. A single small window lights the western wall of the central extension. A one-light door flanked by sidelights opens into the northwest corner of the house. Stuccoed half-walls surround a wide staircase of four concrete steps leading to the door. The second-story contains a pair of six-light casement windows in the northwest corner.

Interior

The interior of the home features hardwood floors and original moldings on doors and windows. A central courtyard has been enclosed to provide den space to the rear of the house. The den is accessed from the living room via a pair of fifteen-light French doors flanked by sidelights. The focal point of the living room is a large paneled mantelpiece that dominates the southern wall. The upper-floor contains a small kitchen, two rooms and a bath. This floor does not feature decorative molding and was used as separate living space for the extended family that occupied the house with the Parkers.

United States Department of the Interior
National Park Service

National Register of Historic Places Continuation Sheet

Section number 8 Page 1

SUMMARY

The Parker House is a unique example of the International style with Mediterranean influences in Star City. Most homes in the town are Folk Victorian, Craftsman or Modern so the Parker House stands out in comparison to the styles more common to Star City. The house has undergone few alterations and is close to its original plan executed by the home's owner, Robert Preston Parker.

ELABORATION

Robert Parker was born in Lynchburg, Virginia in 1868. He attended Lehigh University in Bethlehem, Pennsylvania and graduated with a degree in civil engineering. He later joined the scores of immigrants to Alaska during the gold rush, living there from 1898 to 1903.

In 1905, as chief engineer for the Arizona railroad, Parker surveyed a proposed rail route into the Grand Canyon. However it was considered too expensive to pursue at the time. He also served as chief engineer on railroads in Texas, Arkansas, and Tennessee. In that capacity he moved to Star City in 1916, returning to Jackson, Tennessee with Illinois Central Railroad in 1918. Two years later he returned to Star City only to depart in 1923 for San Antonio, Texas. In 1925 he came back to Star City yet again as part owner of the Gould Southwestern Railroad.

Mr. Parker surveyed Star City and was in charge of naming most of the streets. In the 1940s and 1950s he oversaw the installation of the city's sewer lines and water works, and the construction of roads to Gould in Lincoln County and Monticello in Drew County.

After Parker's last move to Star City he began work on his house in 1926 and completed it in 1927. The plans were ordered from California and only the best building materials were used. Parker called upon his engineering background as the architect of several buildings in Star City. Two structures he designed are the Wynn House in Star City and the Alsobrook House located three miles south of town. These two houses remain standing but have been altered by the application of brick sheathing over original stucco. In addition to residential properties Mr. Parker designed the old First Baptist Church, (destroyed approximately twenty years ago) and several commercial buildings that have also been destroyed.

At one time four generations of the Parker family occupied the Parker home, thus the need for the second-story apartment. Ann Nobles, daughter of Robert Parker said her grandmother always lived with them. Three of Mrs. Nobles children, Penney, Pamela, and Parker were born during the time the family occupied the house. In 1955 the Parkers sold the house to the Jack Atkinson family. Mr. & Mrs. Atkinson were active in the community and the

United States Department of the Interior
National Park Service

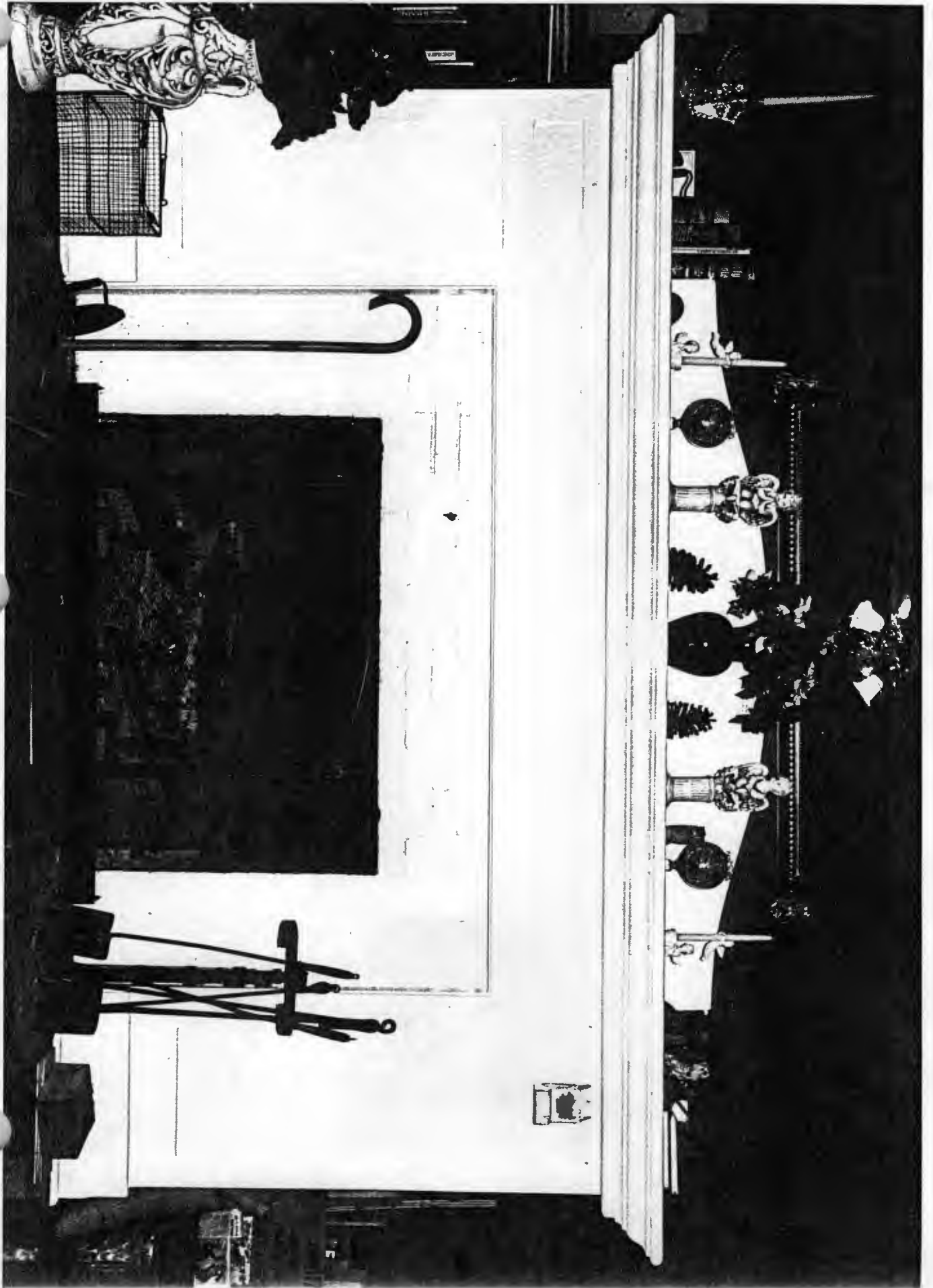
National Register of Historic Places Continuation Sheet

Section number 8 Page 2

First Methodist Church. Mr. Atkinson owned the Plymouth/Dodge dealership in Star City for many years and Sue Atkinson was an insurance agent. In 1997 the Atkinson's third child, Detri and her husband Gary purchased the home.

SIGNIFICANCE

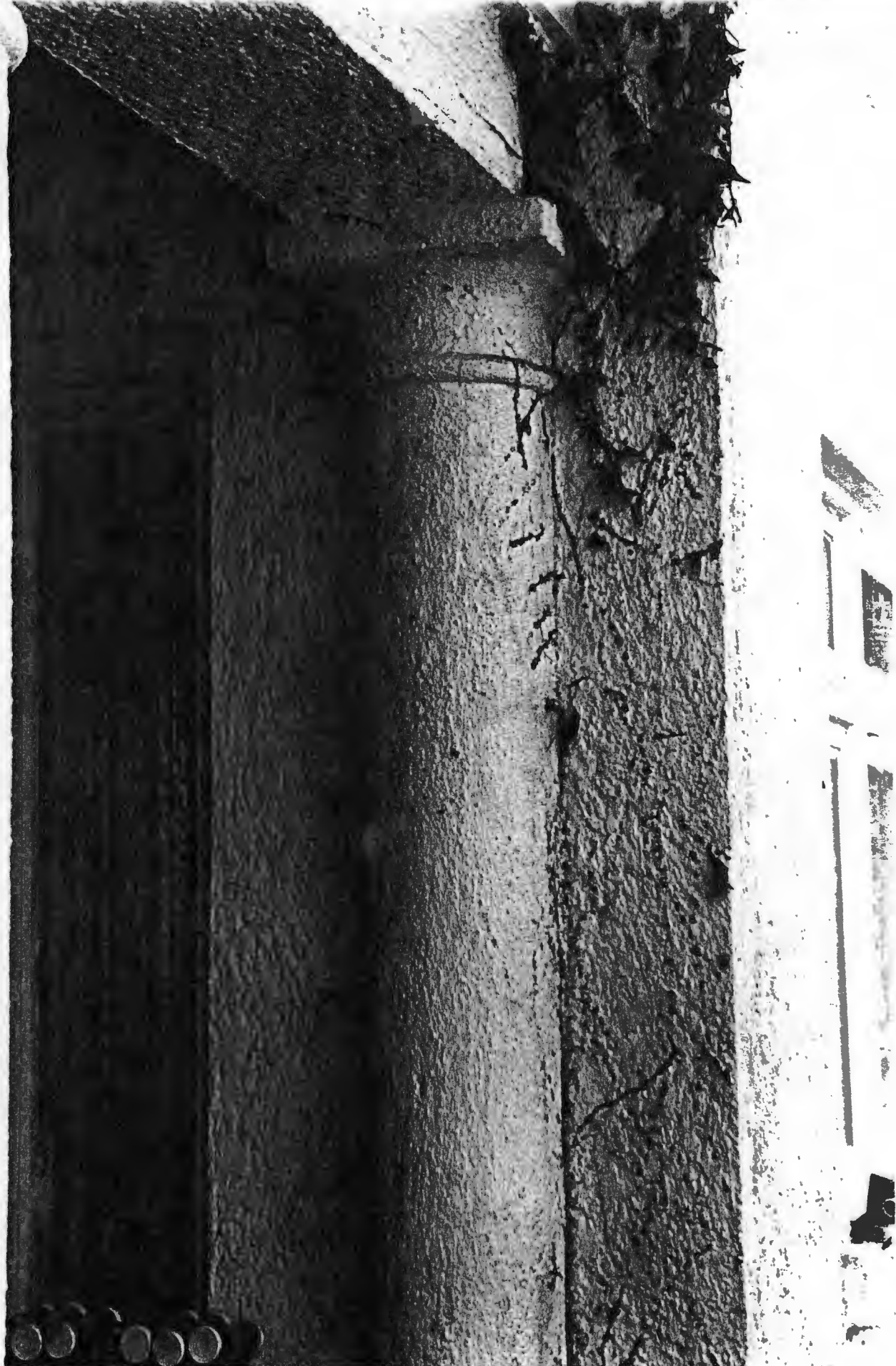
The Parker House constructed in 1927 is an unusual example of the International and Mediterranean styles in Star City. Very few houses built in a similar fashion can be seen in the southeastern area of the state. The Parker House is thought to be the only largely unaltered structure designed by Robert Preston Parker, remaining in Star City. Its unique architectural style by a local architect is being nominated to the National Register with local significance under Criterion C.



Srker House
Lincoln Co, AR

note by Amy Bennett
negative on file at AHPP
ren of mantelpiece

2/23/2000



see Home
Lincoln Co, AR

to by Army Bennett

legating on file at AFI/P
few of Porch support

2/23/2000



Baker House
Lincoln Co, AR

Photo by Mr. Bennett

Negative on file at AHPP
View from west

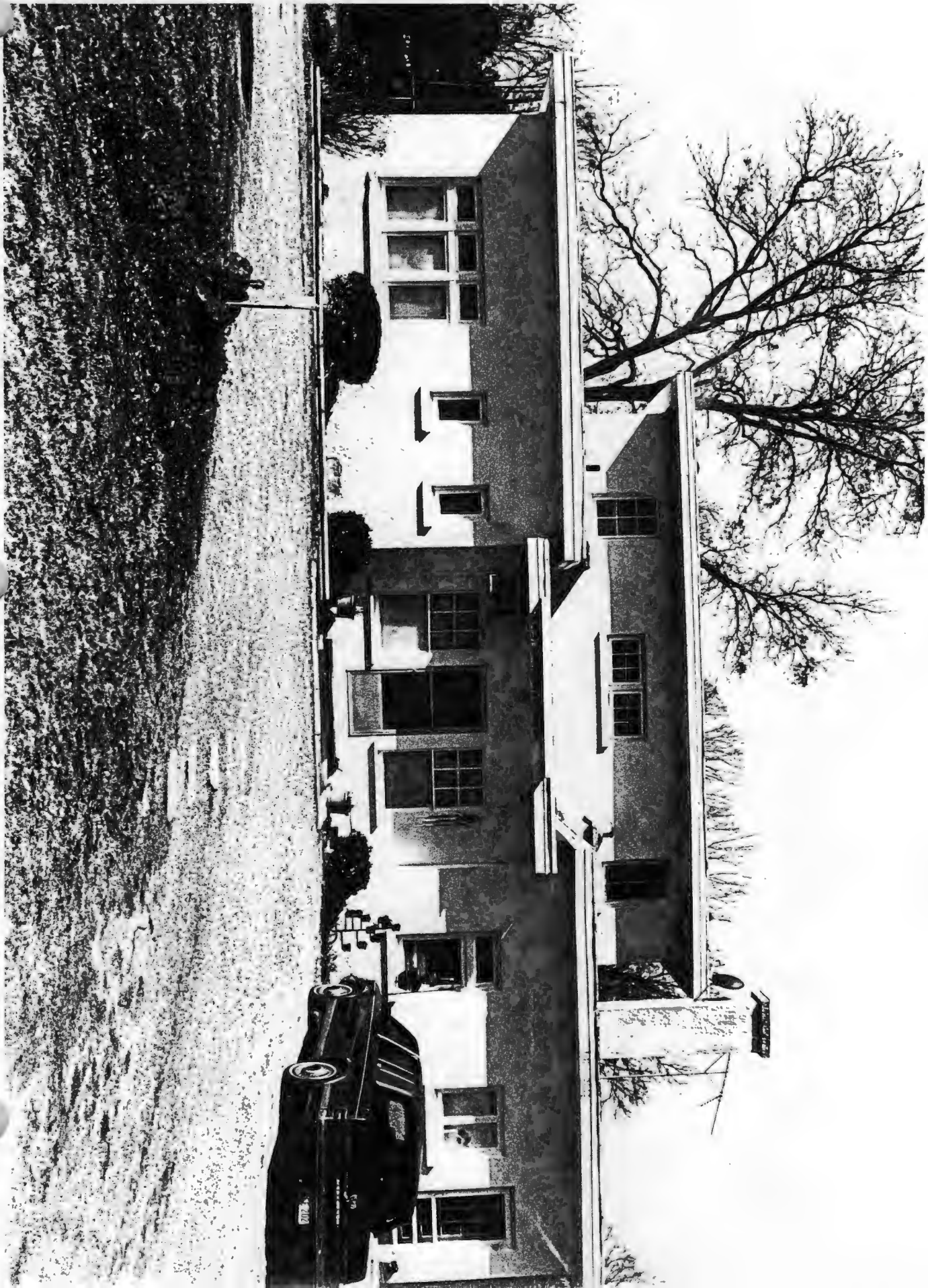
1/23/2000



Parker House
Lincoln Co. Ark

Photo by Mr. Bennett
negative on file at AHPP
View from North

1/23/2000



Reber House
Lincoln Co. AR

Photo by Amy B...
Negative on film at All...
Vern - from ...

01/23/2000



Parker House

Lincoln Co, Ark

Photo by: Amy Bennett

Negative on file at AHFP

View from South

11/24/2000



Order #
LINCOLN Co, AR

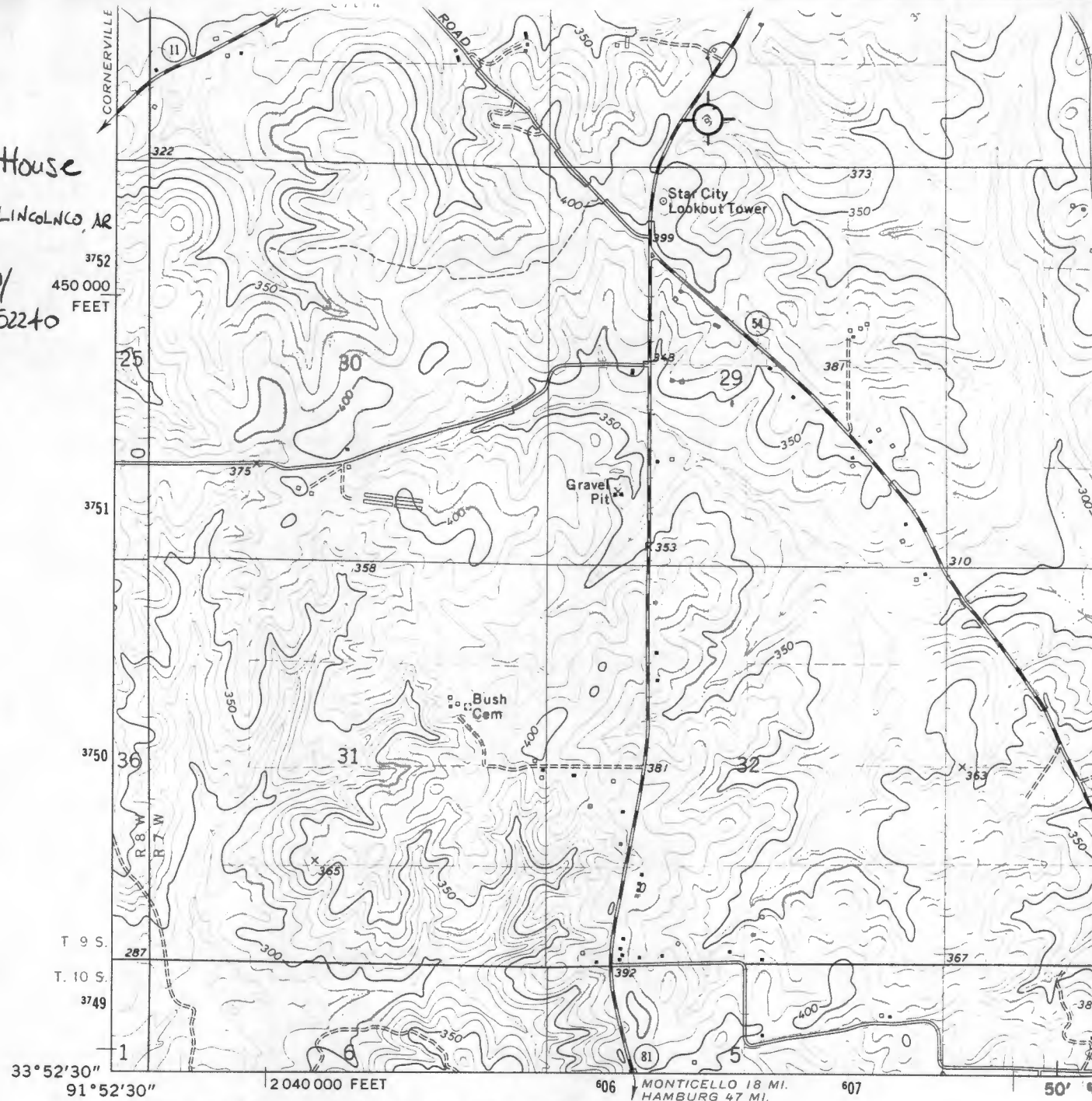
Photo by Andy Bennett

Negative on file at AHP

View of Woodwork on interior

1/23/2000

Barker House
 Star City, LINCOLN CO, AR
 UTM:
 15W06390/
 3752240



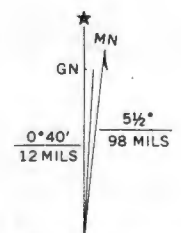
(CORNERSVILLE)
 7651 IV SW

Mapped, edited, and published by the Geological Survey
 Control by USGS and NOS/NOAA

Topography by photogrammetric methods from aerial
 photographs taken 1972. Field checked 1973

Projection and 10,000-foot grid ticks: Arkansas coordinate
 system, south zone (Lambert conformal conic)
 1000-metre Universal Transverse Mercator grid ticks,
 zone 15, shown in blue. 1927 North American datum

Fine red dashed lines indicate selected fence and field lines where
 generally visible on aerial photographs. This information is unchecked



UTM GRID AND 1973 MAGNETIC NORTH
 DECLINATION AT CENTER OF SHEET

