

United States Department of the Interior
National Park Service

National Register of Historic Places
Inventory—Nomination Form

For NPS use only
received
date entered

Continuation sheet

194

Item number 1,2,4,6, & 10

Page 1

INDIVIDUAL DATA SHEET

General Description

Code: LE-063

Congressional District: First

Name: McClintock House

Current Owner: Janet Van Meter Hill

Address: 43 Magnolia
Marianna, Arkansas

Address: 43 Magnolia
Marianna, Arkansas

County: Lee

Architectural Information

Architectural Firm: Charles Thompson

Date of Construction: ca. 1912

Stylistic Influence: Bungalow

Original Use: Residence

Present Use: Residence

Geographical Information

UTM Reference: 15 704950/3850175

Acreage: Less than one

Verbal Boundary Description: Hewitts Addition
SE part, Lot 28, Block R

Condition

Excellent
 Good
 Fair

Deteriorated
 Ruins
 Unexposed

Unaltered
 Altered

United States Department of the Interior
National Park Service

National Register of Historic Places Inventory—Nomination Form

FGI NPS Form 100-108 1-78 received date entered
--

Continuation sheet

195

Item number 7 & 8

Page 2

Code: LE-063

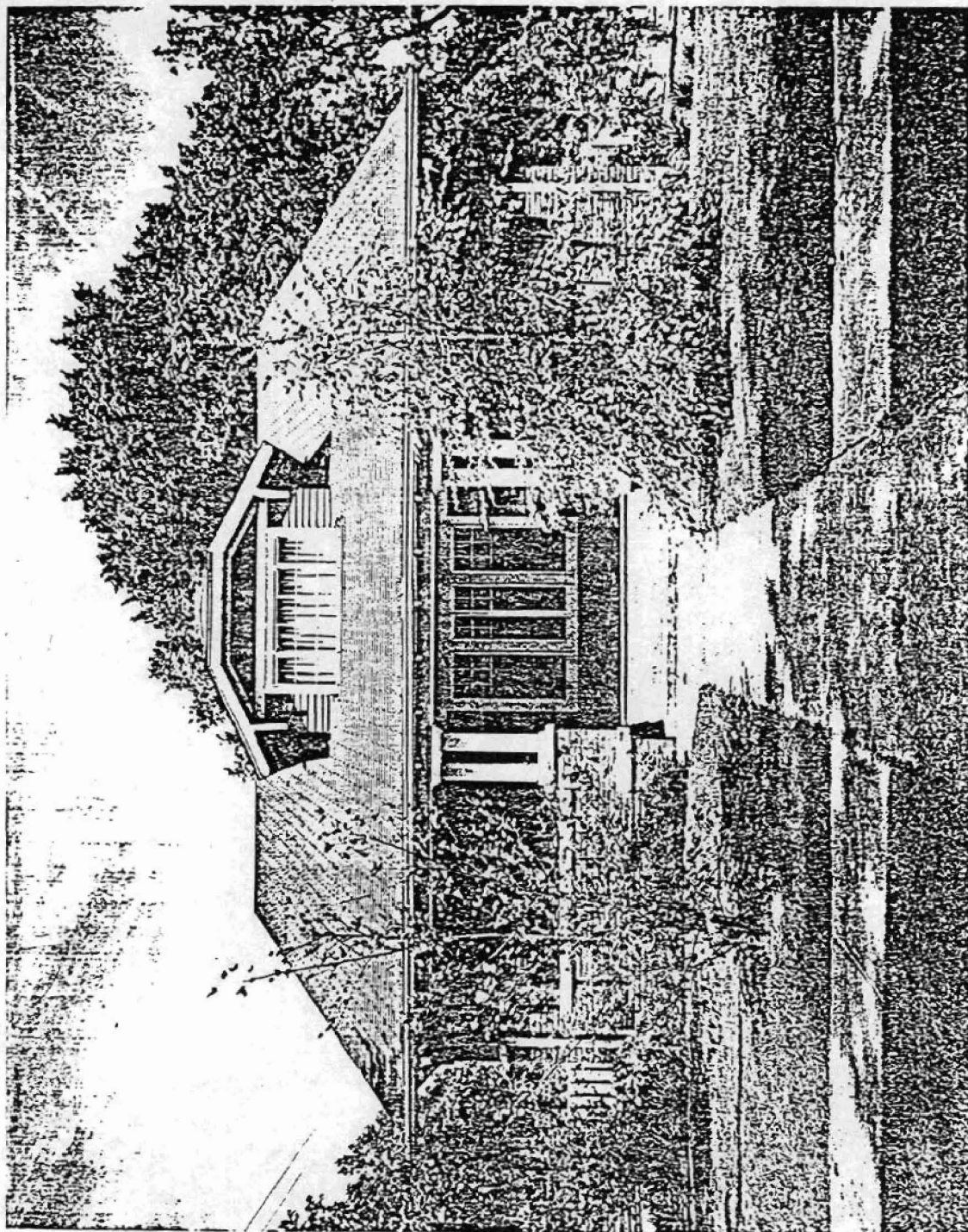
(43 Magnolia, Marianna, AR)

Physical Description

The quiet but considerable charm of this house derives from its pleasing broad, simple lines and symmetry, and the design's sensitivity to scale and proportions. In characteristic bungalow fashion, the gable end roof sweeps low to enclose the full-length, shady front porch supported by simple paired box columns elevated on the low brick balustrade. Providing a stronger visual support, the corners of the porch are supported by brick piers. The house itself is faced with weatherboard. A broad dormer with a long group of fine multi-paned casement windows and a low clipped gable roof enlivens the composition without detracting from the low, horizontal orientation of the house. Reflecting a fine attention to detail, the front door is not visible immediately, being set to one side. Instead, the symmetrical arrangement of two groups of windows, one above and one below, provides an attractive unity and simplicity to a straight-on view of the facade.

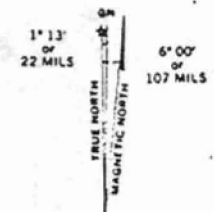
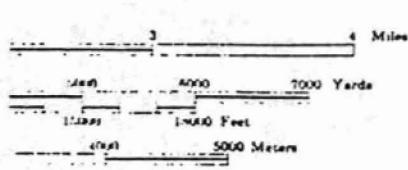
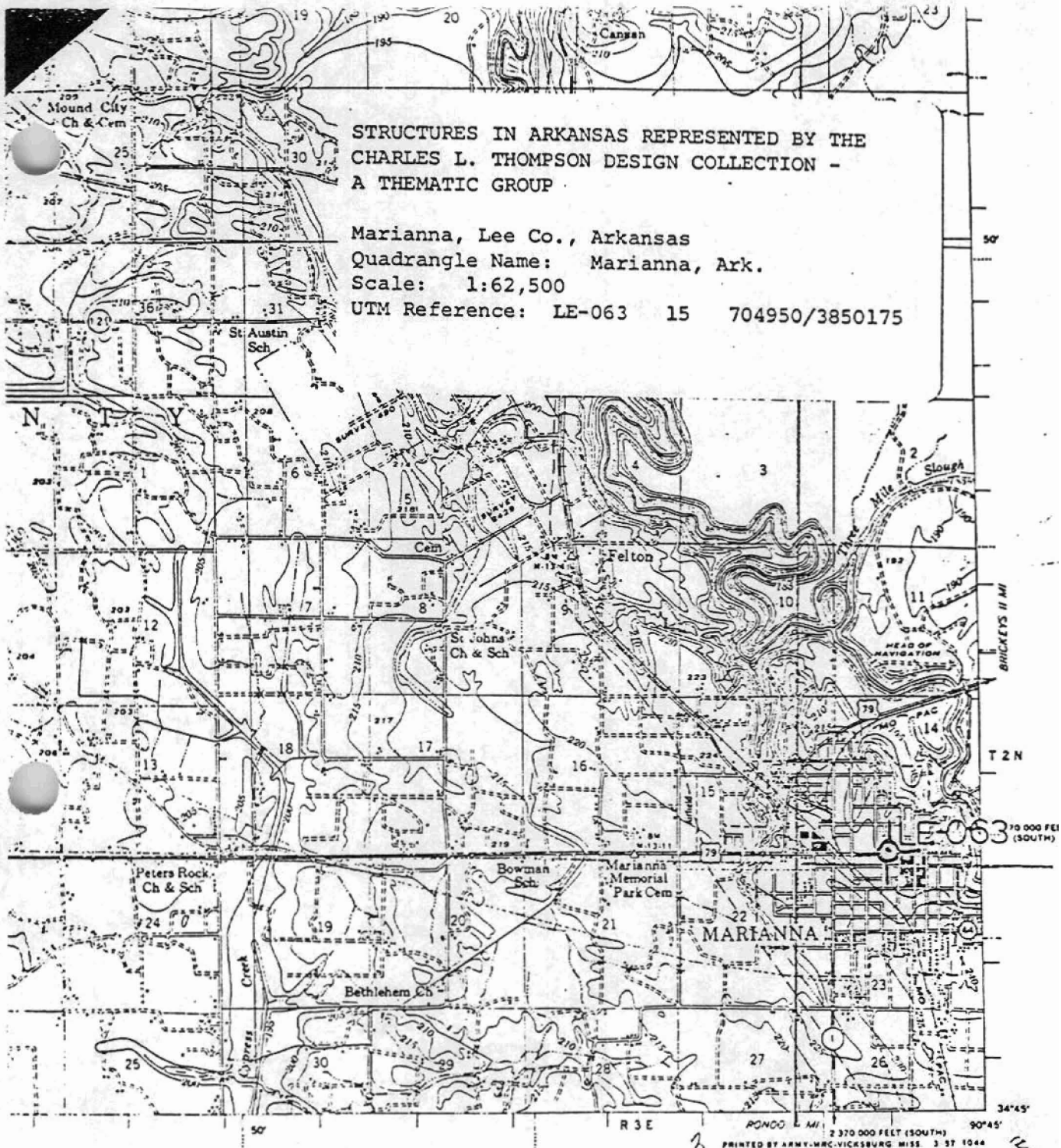
Statement of Significance

The J. M. McClintock House in the eastern Arkansas town of Marianna was designed by Charles L. Thompson ca. 1912. This small house differs from the ordinary builder-designed bungalow in its sensitive scale, proportions and attention to detail. Each component in the McClintock House appears to be carefully thought out in order to work in a unified fashion with the others. The brickwork which forms the balustrade of the front porch adds a feeling of texturalism to the McClintock House. Located at the corner of a main thoroughfare in the small city, the house is an important component of its 1920's residential neighborhood. Another of Thompson's designs in Marianna was listed on the National Register in 1977 (McClintock House). Both houses were designed for members of the same family and represent the wide variety of homes designed by Thompson. The W. S. McClintock House is a large Neo-Classic Revival house built in 1912 and reflects the grand-scale designs of the firm unlike the simple bungalow which Thompson designed for the J. M. McClintock family during the same period. **This diversity clearly reflects why the firm achieved such mass appeal.** This handsome house is an unusual example in the firm's repertoire of bungalows in that an approach to simplicity is so clearly executed.



STRUCTURES IN ARKANSAS REPRESENTED BY THE
 CHARLES L. THOMPSON DESIGN COLLECTION -
 A THEMATIC GROUP

Marianna, Lee Co., Arkansas
 Quadrangle Name: Marianna, Ark.
 Scale: 1:62,500
 UTM Reference: LE-063 15 704950/3850175



APPROXIMATE MEAN DECLINATION 1955
 FOR CENTER OF SHEET
 ANNUAL MAGNETIC CHANGE 1 WESTERLY

LEGEND

Levee	-----	Levee mile post	LMP
Secondary Levee	-----	Levee Station	LS
Retards and Dikes	-----	Towhead	TH
Revetment	-----	River Gate	⊙

ROAD DATA 1956

In developed areas, only through roads are classified

Hard surface, heavy duty	=====	4 LANES 6 LANES
Hard surface, medium duty	=====	4 LANES 6 LANES
Loose surface, graded and drained, or narrow hard surface road	=====	
Improved dirt road or street	=====	
Unimproved dirt road; trail	-----	
Route markers: Federal; State	□ ○	

MARIANNA, ARK.
 EDITION OF 1957
 REPRINTED 1975
 N3445-W9045/15

contour line
 MID SCALE 15
 TRANSMISSION
 ny
 3 per copy