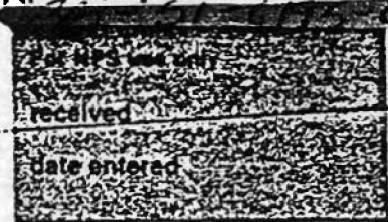


United States Department of the Interior
National Park Service

National Register of Historic Places
Inventory—Nomination Form

EXP. 12/31/84



Continuation sheet 190

Item number 1, 2, 4, 6, & 10

Page 1

INDIVIDUAL DATA SHEET

General Description

Code: JO-060

Congressional District: Third

Name: McKennon House

Current Owner: Gerald L. Loop

Address: 115 Grandview
Clarksville, Arkansas

Address: 115 Grandview
Clarksville, Arkansas

County: Johnson

Architectural Information

Architectural Firm: Charles Thompson

Date of Construction: 1907

Stylistic Influence: Colonial Revival

Original Use: Residence

Present Use: Residence

Geographical Information

UTM Reference: 15 458230/3925080

Acreage: Less than one

Verbal Boundary Description: Rogers East Addition
Block 1, Lot West 1/4 of 4

Condition

Excellent
 Good
 Fair

Deteriorated
 Ruins
 Unexposed

Unaltered
 Altered

National Register of Historic Places
Inventory—Nomination Form

For NPS use only
received
date entered

Continuation sheet 191

Item number 7 & 8

Page 2

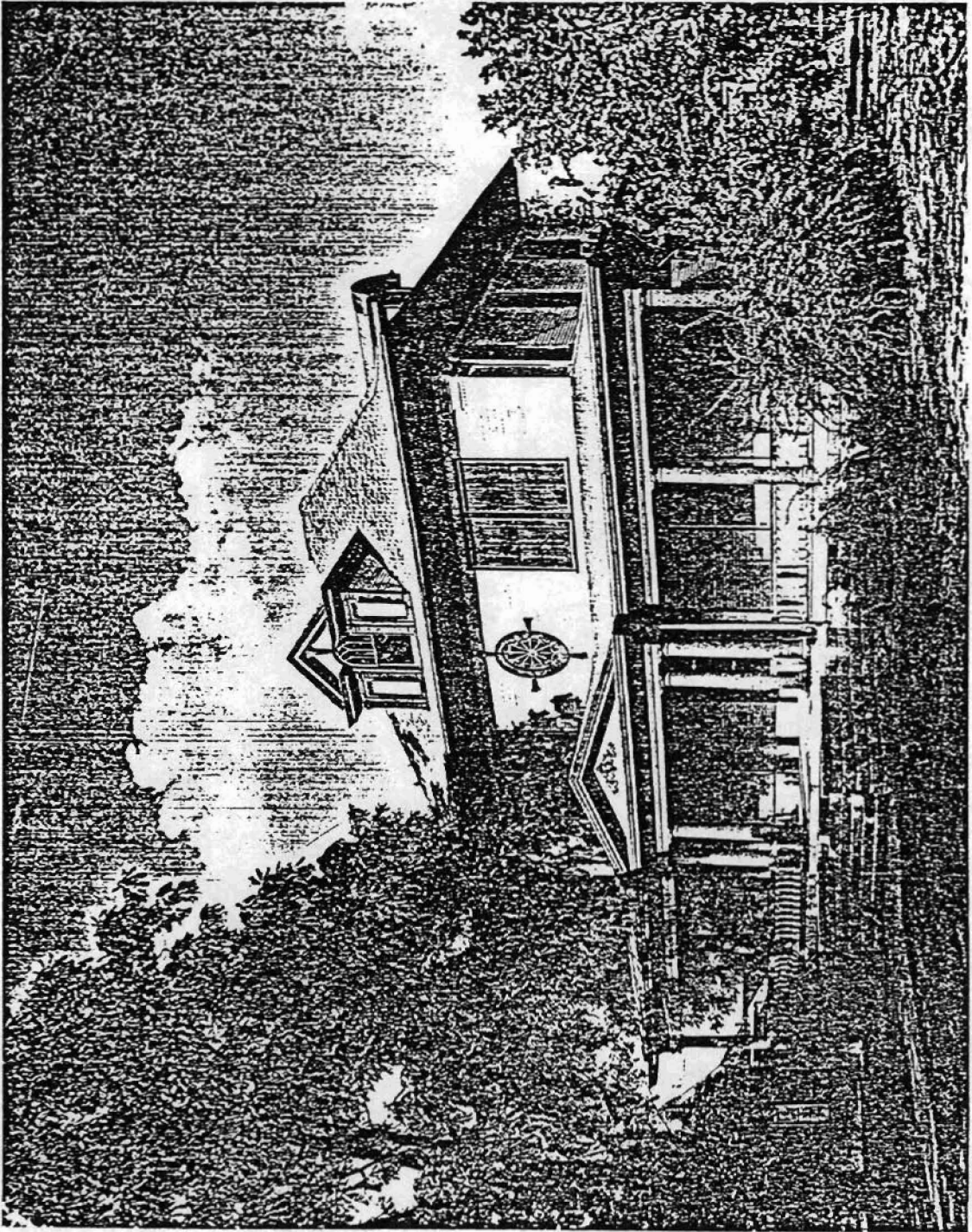
Code: JO-060 (115 Grandview, Clarksville, AR)

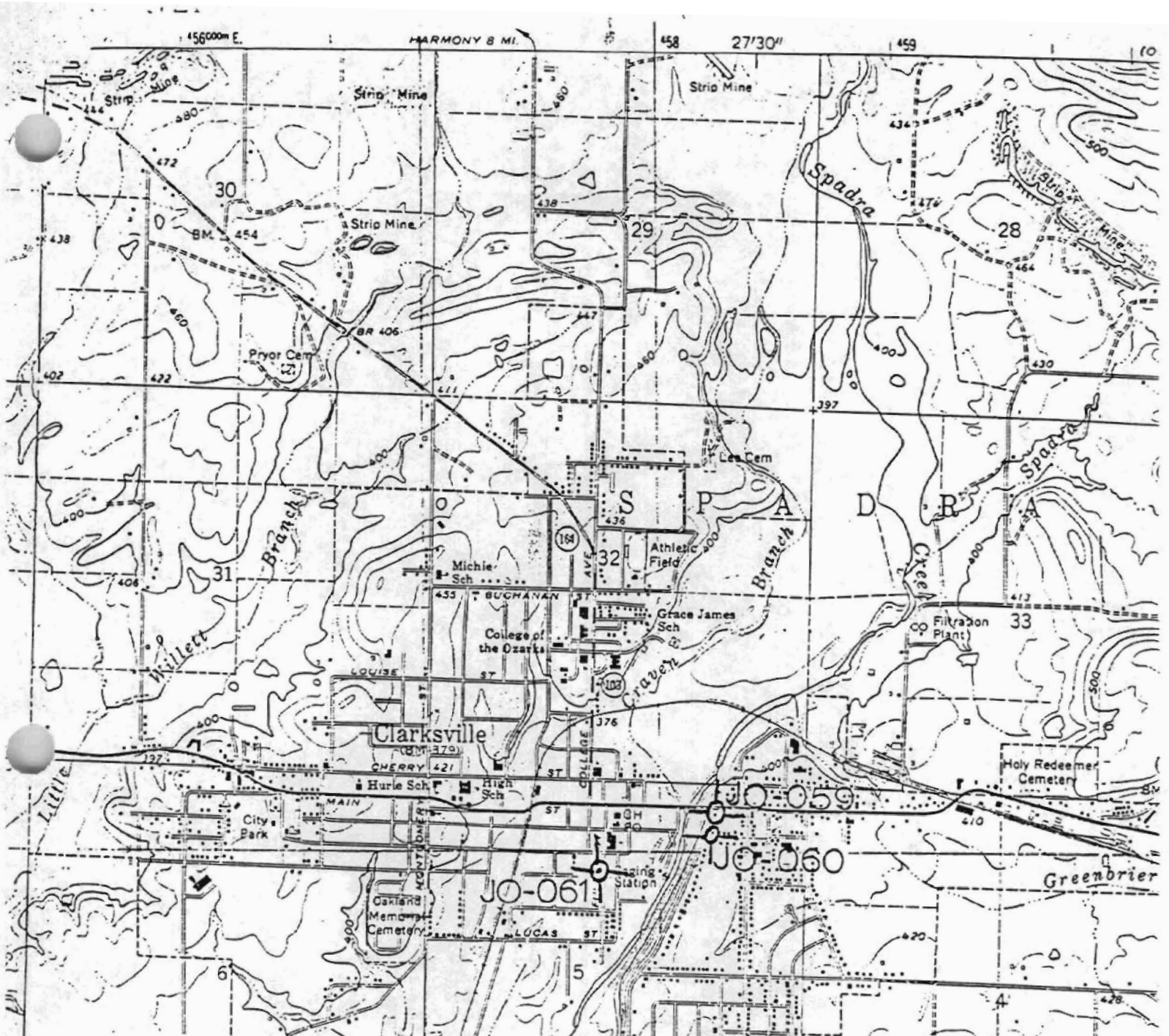
Physical Description

This imposing two-story house, set on a high brick foundation and faced with weatherboards, is situated on a large elevated lot overlooking the small city of Clarksville. This traditional American Foursquare type house has the characteristic high hipped roof and overhanging flared eaves. A decorative gable roof dormer pierces the roof on the front and side elevations. The wide front porch here wraps part way around both sides of the house and is distinguished by a projecting shallow gable roof pediment over the porch entrance. This pediment is supported by clusters of three Tuscan columns. Single Tuscan columns line the porch, supporting a full entablature enriched by dentil molding at the base of the cornice. Urn-shaped balusters form the porch balustrade. Unusual features are the oval window centered in the second story, appearing just above the apex of the pedimented portico, and the Palladian window decorating the front dormer. The door features beveled plate glass and sidelights. The sash windows have one-over-one lights.

Statement of Significance

The house was built for Dr. A. M. McKennon in Clarksville, Arkansas and designed by Charles L. Thompson in 1907. A more decorative version than many of the American Foursquare type houses designed by Thompson, the McKennon House is distinguished by the unusual second-story oval window on the front, the pedimented portico projecting from the wrap around porch and the Palladian window in the dormer. Both the McKennon House and the Davis House (JO-061) in Clarksville feature variations in decorative detailing which set them apart from other Thompson Foursquare designs. Both houses were designed near the turn-of-the-century and are distinctive buildings in the city of Clarksville.





Structures in Arkansas Represented by the Charles L. Thompson Design Collection

Clarksville, Johnson Co., Arkansas
 Quadrangle Name: Clarksville, Ark.

Scale: 1:24,000

UTM Reference:	JO-059	15	458240/3925160
	JO-060	15	458230/3925080
	JO-061	15	457740/3924740

