

United States Department of the Interior
National Park Service

National Register of Historic Places
Inventory—Nomination Form

EXP 12/31/84



Continuation sheet 188

Item number 1,2,4,6, & 10

Page 1

INDIVIDUAL DATA SHEET

General Description

Code: JO-059

Congressional District: Third

Name: Dunlap House

Current Owner: Dexter L. Johnson

Address: 101 Grandview
Clarksville, Arkansas

Address: Box 2337
Montclair, California 91763

County: Johnson

Architectural Information

Architectural Firm: Charles Thompson

Date of Construction: ca. 1910

Stylistic Influence: Colonial Revival

Original Use: Residence

Present Use: Residence

Geographical Information

UTM Reference: 15 458240/3925160

Acreage: Less than one

Verbal Boundary Description: Rogers East Addition
Block 1, Lot 1

Condition

Excellent
 Good
 Fair

Deteriorated
 Ruins
 Unexposed

Unaltered
 Altered

United States Department of the Interior
National Park Service

National Register of Historic Places
Inventory—Nomination Form

For NPS use only
received
date entered

Continuation sheet 189

Item number 7 & 8

Page 2

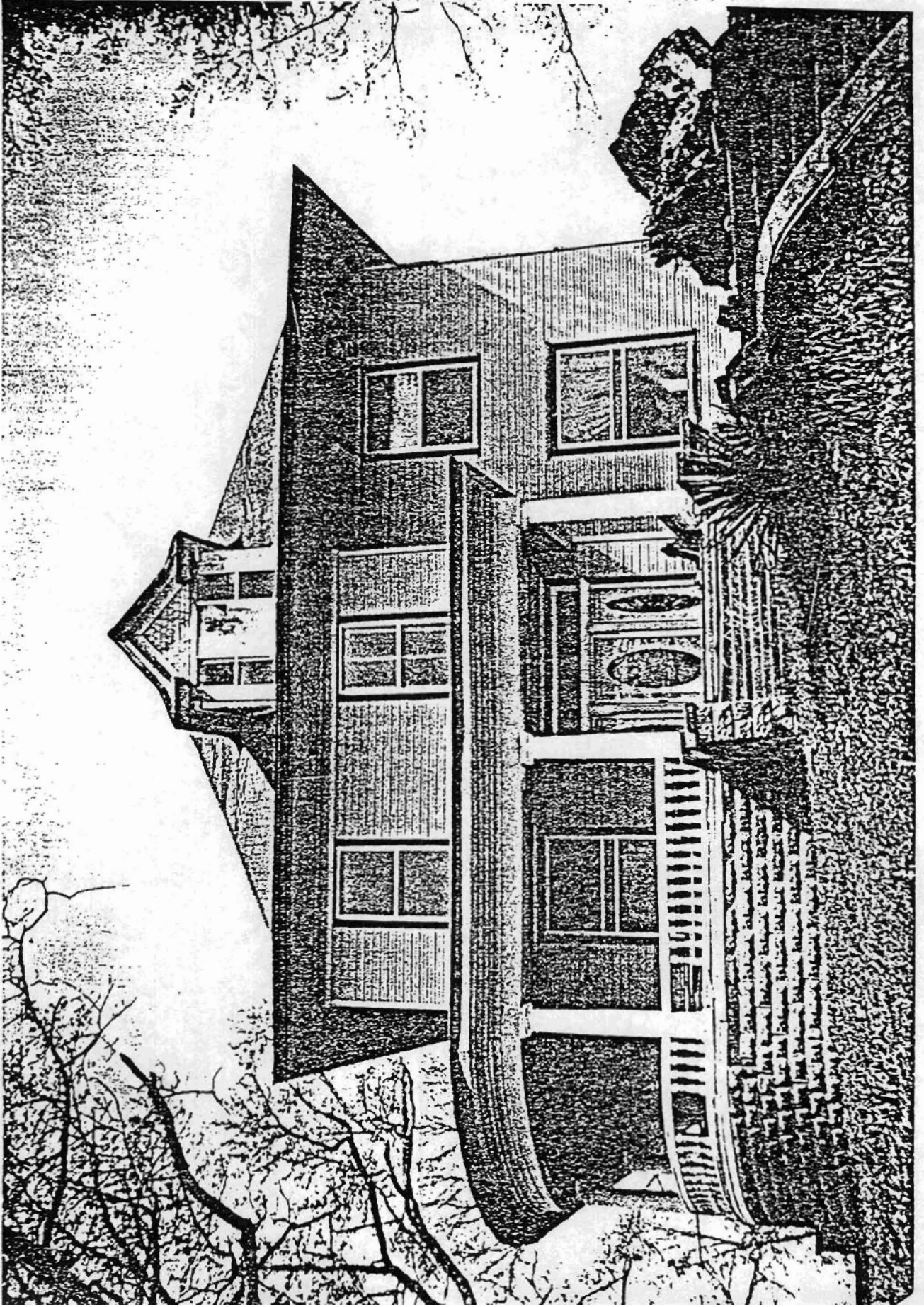
Code: JO-059 (101 Grandview, Clarksville, AR)

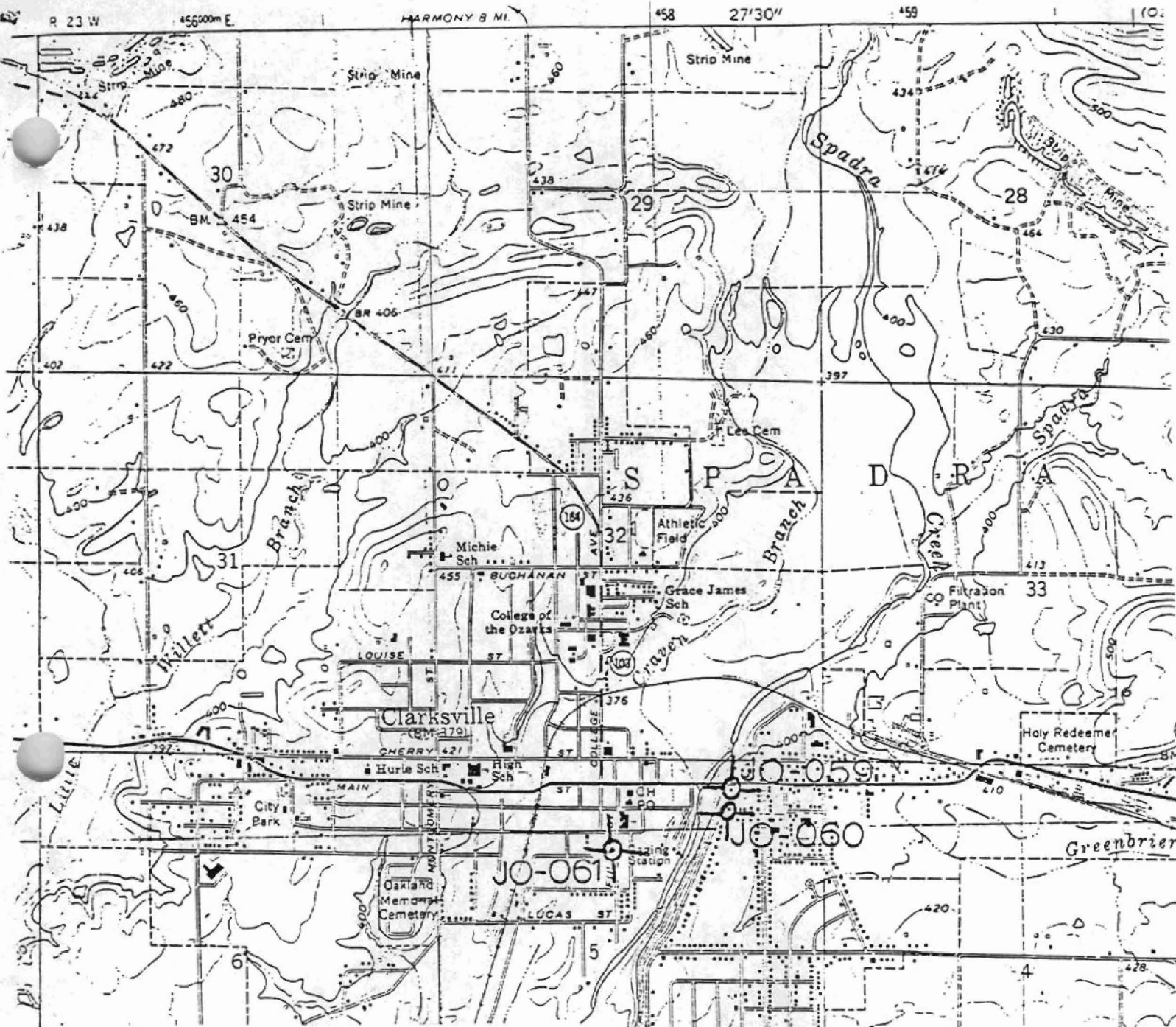
Physical Description

Located prominently on a hilltop setting at the edge of Clarksville is this large two-story American Foursquare house faced with weatherboards. The structure is even further elevated on a high rusticated cast stone foundation. Characteristically, the hipped roof has a wide overhang and flared eaves. The front porch is somewhat unusual in that it covers only half of the front elevation and extends in a curve around the front and north elevations. On this porch Tuscan columns support a full but unembellished entablature. Lighting the attic on the front is a gable roof dormer enriched with shingles. The front door is unusually decorative, featuring a large beveled oval glass window flanked by two similar oval sidelights. A long plate glass transom appears over the lintel in the form of a simple cornice visually supported by two pilasters with simple capitals.

Statement of Significance

The Dunlap House in Clarksville, a town in West Arkansas, was designed by the Charles L. Thompson firm in circa 1910. The large two-story American Foursquare house is different from Thompson's usual work with the Foursquare in the unusually decorative front door featuring a large beveled oval glass window flanked by two similar oval sidelights and its porch which covers only part of the principle facade. The porch sweeps around the house in proportion to its curving lot. Both elements make a statement of elegance for this otherwise traditional Foursquare plan. Thompson's design of the house and its landscape is appropriate to its sumptuous setting. Elevated high above the street level, concrete stairs, distinguished by frequent landings and round concrete balustrade, lead one from the street to the entrance. A very visible building in Clarksville, the Dunlap House is being restored to its original condition.





Structures in Arkansas Represented by the Charles L. Thompson Design Collection

Clarksville, Johnson Co., Arkansas
 Quadrangle Name: Clarksville, Ark.

Scale: 1:24,000

UTM Reference:	JO-059	15	458240/3925160
	JO-060	15	458230/3925080
	JO-061	15	457740/3924740

