

United States Department of the Interior  
National Park Service

# National Register of Historic Places Registration Form

This form is for use in nominating or requesting determinations for individual properties and districts. See instructions in *How to Complete the National Register of Historic Places Registration Form* (National Register Bulletin 16A). Complete each item by marking "x" in the appropriate box or by entering the information requested. If an item does not apply to the property being documented, enter "N/A" for "not applicable." For functions, architectural classification, materials, and areas of significance, enter only categories and subcategories from the instructions. Place additional entries and narrative items on continuation sheets (NPS Form 10-900a). Use a typewriter, word processor, or computer, to complete all items.

### 1. Name of Property

historic name Arkansas Louisiana Gas Company Building  
other names/site number \_\_\_\_\_

### 2. Location

street & number 116 West 6th  not for publication  
city or town Pine Bluff  vicinity  
state Arkansas code AR county Jefferson code 069 zip code 71601

### 3. State/Federal Agency Certification

As the designated authority under the National Historic Preservation Act, as amended, I hereby certify that this  nomination  request for determination of eligibility meets the documentation standards for registering properties in the National Register of Historic Places and meets the procedural and professional requirements set for in 36 CFR Part 60. In my opinion, the property  meets  does not meet the National Register criteria. I recommend that this property be considered significant  
 nationally  statewide  locally. (See continuation sheet for additional comments.)

Cathie Matthews 3/22/01  
Signature of certifying official/Title Date  
Arkansas Historic Preservation Program  
State or Federal agency and bureau

In my opinion, the property  meets  does not meet the National Register criteria. ( See Continuation sheet for additional comments.)

\_\_\_\_\_  
Signature of certifying official/Title Date  
\_\_\_\_\_  
State or Federal agency and bureau

### 4. National Park Service Certification

I hereby certify that the property is:

- entered in the National Register.  
 See continuation sheet
- determined eligible for the National Register.  
 See continuation sheet
- determined not eligible for the National Register.
- removed from the National Register.
- other, (explain:) \_\_\_\_\_  
\_\_\_\_\_  
\_\_\_\_\_

Signature of the Keeper

Date of Action

\_\_\_\_\_  
\_\_\_\_\_  
\_\_\_\_\_  
\_\_\_\_\_

5. Classification

Ownership of Property (Check as many boxes as apply)

- private, public-local, public-State, public-Federal

Category of Property (Check only one box)

- building(s), district, site, structure, object

Number of Resources within Property (Do not include previously listed resources in count.)

Table with columns: Contributing, Noncontributing, buildings, sites, structures, objects, Total

Name of related multiple property listing (Enter "N/A" if property is not part of a multiple property listing.)

N/A

Number of Contributing resources previously listed in the National Register

0

6. Function or Use

Historic Functions (Enter categories from instructions)

TRADE/COMMERCE: business

Current Functions (Enter categories from instructions)

VACANT/NOT IN USE

7. Description

Architectural Classification (Enter categories from instructions)

MODERN MOVEMENT: Moderne

Materials (Enter categories from instructions)

foundation CONCRETE

walls BRICK

GLASS

roof METAL

other

Narrative Description

(Describe the historic and current condition of the property on one or more continuation sheets.)

8. Statement of Significance

Applicable National Register Criteria

(Mark "x" in one or more boxes for the criteria qualifying the property for National Register listing.)

- A Property is associated with events that have made a significant contribution to the broad patterns of our history.
- B Property is associated with the lives of persons significant in our past.
- C Property embodies the distinctive characteristics of a type, period, or method of construction or represents the work of a master, or possesses high artistic values, or represents a significant and distinguishable entity whose components lack individual distinction.
- D Property has yielded, or is likely to yield, information important in prehistory or history.

Criteria Considerations

(Mark "x" in all the boxes that apply.)

Property is:

- A owned by a religious institution or used for religious purposes.
- B removed from its original location.
- C moved from its original location.
- D a cemetery.
- E a reconstructed building, object, or structure.
- F a commemorative property
- G less than 50 years of age or achieved significance within the past 50 years.

Levels of Significance (local, state, national)

Local

Areas of Significance (Enter categories from instructions)

Architecture

Period of Significance

1950

Significant Dates

1950

Significant Person (Complete if Criterion B is marked)

N/A

Cultural Affiliation (Complete if Criterion D is marked)

N/A

Architect/Builder

Architect : Selligman, Mitchell

Narrative Statement of Significance

(Explain the significance of the property on one or more continuation sheets.)

9. Major Bibliographical References

Bibliography

(Cite the books, articles, and other sources used in preparing this form on one or more continuation sheets.)

Previous documentation on file (NPS):

- preliminary determination of individual listing (36 CFR 67) has been requested
- previously listed in the National Register
- Previously determined eligible by the National Register
- designated a National Historic Landmark
- recorded by Historic American Buildings Survey # \_\_\_\_\_
- recorded by Historic American Engineering

Primary location of additional data:

- State Historic Preservation Office
- Other State Agency
- Federal Agency
- Local Government
- University
- Other

Name of repository:

Arkansas Louisiana Gas Co. Building  
Name of Property

Jefferson County, Arkansas  
County and State

10. Geographical Data

Acres of Property Less than one acre

UTM References

(Place additional UTM references on a continuation sheet.)

1 15 .591750 3787190  
Zone Easting Northing  
2 \_\_\_\_\_

3 \_\_\_\_\_  
Zone Easting Northing  
4 \_\_\_\_\_

See continuation sheet

Verbal Boundary Description

(Describe the boundaries of the property on a continuation sheet.)

Lot 3, Finnerty's Addition to the City of Pine Bluff, Jefferson County, Arkansas

Boundary Justification

The boundary includes all land historically associated with the building.

11. Form Prepared By

name/title Kathleen Pate: Intern  
organization Arkansas Historic Preservation Program date 10/27/00  
street & number 304 West 15<sup>th</sup> Avenue telephone 870-536-2927  
city or town Pine Bluff state Arkansas zip code 71601

Additional Documentation

Submit the following items with the completed form:

Continuation Sheets

Maps

A USGS map (7.5 or 15 minute series) indicating the property's location

A Sketch map for historic districts and properties having large acreage or numerous resources.

Photographs

Representative black and white photographs of the property.

Additional items

(Check with the SHPO or FPO for any additional items.)

Property Owner

(Complete this item at the request of SHPO or FPO.)

name \_\_\_\_\_  
street & number \_\_\_\_\_ telephone \_\_\_\_\_  
city or town \_\_\_\_\_ state \_\_\_\_\_ zip code \_\_\_\_\_

Paperwork Reduction Act Statement: This information is being collected for applications to the National Register of Historic Places to nominate properties for listing or determine eligibility for listing, to list properties, and to amend existing listing. Response to this request is required to obtain a benefit in accordance with the National Historic Preservation Act, as amended (16 U.S.C. 470 *et seq.*)

Estimated Burden Statement: Public reporting burden for this form is estimated to average 18.1 hours per response including time for reviewing instructions, gathering and maintaining data, and completing and reviewing the form. Direct comments regarding this burden estimate or any aspect of this form to the Chief, Administrative Services Division, National Park Service, P. O. Box 37127, Washington, DC 20013-7127; and the Office of Management and Budget, Paperwork Reductions Projects (1024-0018), Washington, DC 20303.

United States Department of the Interior  
National Park Service

## National Register of Historic Places Continuation Sheet

Section number 7 Page 1

---

### Summary

The Arkansas Louisiana Gas Company located at 116 West 6<sup>th</sup> Avenue in Pine Bluff, Arkansas, is less than one block from Main Street in what was once a thriving downtown commercial district. Built in 1950, the building falls within the construction boom experienced in the years following WWII. The single story, rectangular Art Moderne building sits atop a continuous concrete foundation and features glass block panels, carra glass tiles, and horizontal coping that runs across the front of the building; all of which are prominent decorative features found on Art Moderne buildings. The vertical projection of a parapet crowned by a pair of blue flames show Art Deco influences on the building.

### Elaboration

The Arkansas Louisiana Gas Co. located at 116 West 6<sup>th</sup> Avenue in Pine Bluff, Arkansas, is less than one block from Main Street in what was once a thriving downtown commercial district. The single story, rectangular Art Moderne building sits atop a continuous concrete foundation and features glass block panels, carra glass tiles, and horizontal coping that runs across the front of the building; all of which are prominent decorative features found on Art Moderne buildings. The vertical projection of a parapet crowned by a pair of blue flames that rise up from the flat roof show Art Deco influences on the building. The buildings modern façade shows the prosperity felt by Pine Bluff in the Post WWII economic boom. The 1950 ARKLA building is a wonderful example of modernist architecture that has been virtually unaltered.

### North Elevation (Front)

The building features a unique façade. It consists of burgundy carra glass panels extending the width of the building at a height of three panels with a central parapet extending an addition two panels from the flat roofline. Aluminum coping is visible at the top of the panels. The name of the business, "ARKANSAS LOUISIANNA GAS CO." is displayed in metal letters on the parapet with a large blue acrylic flame-shaped light rising from each end. An aluminum hood overhang extends from the front of the building and differentiates between the carra glass panels and two pairs of large darkly tinted plate glass windows set into concrete. The central recessed beveled entrance features a single glass door with a sidelight and transom. A pair of glass block sections partially encased in two concrete columns flank the doorway. The front façade remains virtual unchanged. It is unclear if the single glass door with sidelight and transom is original. The design plans called for a more elaborate set of double glass doors with decorative pull bars on the exterior. A small rectangle has been cut into the left glass black section to accommodate a night payment drop slot.

### West Elevation (Right Side)

The front section of the right side of the building echoes the front façade. A pair of darkly tinted plate glass windows meets the windows on the front to form the northwest corner of the building. The carra glass panels and the aluminum facia overhang continue around the side of the building above this pair of windows. The carra glass

United States Department of the Interior  
National Park Service

## National Register of Historic Places Continuation Sheet

Section number 7 Page 2

panels then expand to cover the full height of the building for a distance of three panels. The remainder of the western elevation is cream colored brick with burgundy aluminum coping visible at the roofline. The right side of the building includes two single two-over-two double-hung windows and four pairs of two-over-two double hung windows that all have concrete sills. The three downspouts located on the right side of the building have cast iron boots. The western elevation also features a drive through window with an aluminum fascia overhang similar to the front façade. The drive through window has been changed from one with an opening that was raised to one with a drawer that is extended. The new window occupies the same opening directly underneath the aluminum fascia overhang.

### South Elevation (Back)

The rear of the building is cream colored brick with burgundy aluminum coping visible at the roofline. The southern elevation features a rear entrance to the building consisting of two metal doors, each with a two-panel window. The doorway lies closer to the eastern elevation of the building with a single two-over-two double-hung window located on each side.

### East Elevation (Left Side)

The front section of the left side of the building mirrors the front section of the right side of the building. A pair of darkly tinted plate glass windows meets the left set of windows on the front to form the northeast corner of the building. The carra glass panels and the aluminum fascia overhang continue around the side of the building above this pair of windows. The carra glass panels then expand to cover the full height of the building for a distance of three panels. The remainder of the eastern elevation is cream colored brick with burgundy aluminum coping visible at the roofline. The left side of the building includes eight single two-over-two double-hung windows and one pair of two-over-two double-hung windows. These windows also have concrete sills.

### Interior

The building is one story with a rectangular floor plan. The front of the building originally consisted of a large showroom spanning the entire width of the building with a single support column in the center. A hallway leading from the showroom area to the double door rear entrance divides the remaining length of the building. Offices line the left side of the hallway toward the front of the building. Restroom facilities, a janitorial closet, and a kitchen facility are located on the left side of the hallway toward the rear of the building. A customer service counter extends to the right from the hallway to the built in drive through window. Behind the customer service counter is large room containing a walk-in wall safe. The "stationary room" is located at the right rear of the building. Interior features original linoleum flooring in the front showroom area and original tile in both restroom facilities. One office contains a set of original built in bookcases and a full wall of original cabinetry remains in the "stationary

United States Department of the Interior  
National Park Service

## National Register of Historic Places Continuation Sheet

Section number 7 Page 3

---

room." The windows are framed within the interior walls with downward curving sills. A small office space has been created in the two front corners of the showroom leaving a smaller open area. The service counter has been replaced multiple times but continues to occupy the same space as the original. In the late 1960's, a set of interior double doors was added to close off hallway access from the front of the building. A portion of the ladies lounge was absorbed into an adjacent office space to form a storage area.

### **Integrity**

The Arkansas Louisiana Gas Company building located in Pine Bluff, Arkansas, maintains historic integrity in all aspects. The building has been well maintained at its original location with only minor modifications to the original design. The surrounding area remains a downtown commercial district with numerous office and retail buildings. The original materials utilized for the exterior and the interior of the building have not been replaced. The quality workmanship associated with the construction of the building is evident by a lack of repairs. The feeling of the building remains due to its unique design and long standing association with the Arkansas Louisiana Gas Light Company.

United States Department of the Interior  
National Park Service

## National Register of Historic Places Continuation Sheet

Section number 8 Page 1

### Significance

The Arkansas Louisiana Gas Company building is being nominated to the National Register of Historic Places under **Criterion C** with **local significance** as the best extant Art Moderne commercial building in downtown Pine Bluff, Arkansas. The combination of the specified materials with the design exemplifies the Modern architectural movement in the United States. Its unique façade crowned by a pair of acrylic blue flames makes it a highly recognizable building in the downtown area of Pine Bluff.

### Elaboration

Joseph Bonne was the first person of European descent to settle the area around present day Pine Bluff, Arkansas. Bonne was the son of a Frenchman and a Quapaw woman and acted as interpreter at the 1818 Quapaw Cession at St. Louis. During this meeting the Quapaw tribe signed away all of their lands except for 1,500,000 acres in Southeast Arkansas. Bonne built a small cabin on a pine-covered bluff located on the south bank of the Arkansas River. His home became the focal point of the areas and he regularly housed and fed travelers for a small fee. Although most visitors were just passing through, a small settlement began to spring up around Bonne's cabin. In 1829, the territorial governor of Arkansas, John Pope, approved legislation that established Jefferson County from portions of Arkansas and Pulaski counties. The act also provided that the temporary seat of justice for the county be the home of Joseph Bonne. Ten years later the town of Pine Bluff was incorporated.

Pine Bluff saw a tremendous growth in population in the decade before the Civil War. Large groups of immigrants from other Deep South states flocked the area in search of cheap fertile land. Farming cotton became the chief industry in the area. The town became a thriving river port as steamboats stopped in increased numbers to transport the ever-growing cargoes of cotton.

The city grew even faster when the railroad made its way to Pine Bluff. The city grew by leaps and bounds in the 1880's and had modern amenities in the form of electrical lights, water and sewer system, and two telephone companies. By 1902 the city had an electric streetcar system.

Like most other areas Pine Bluff felt the pinch of the Great Depression. The economy of Pine Bluff was totally changed when the United States Army opened an Arsenal at Pine Bluff. Workers that moved to Pine Bluff to build the armory brought in the first influx of money since the beginning of the Great Depression. Permanent workers at the arsenal brought a constant flow of money into the city. This along with the housing demands brought about by returning servicemen from WWII kept the economy booming. It was in this era the Arkansas Louisiana Gas Company building was constructed.



United States Department of the Interior  
National Park Service

## National Register of Historic Places Continuation Sheet

Section number 8 Page 2

The Arkansas Louisiana Gas Company building is unique within the city of Pine Bluff. While many buildings from the 1950's remain standing in Pine Bluff, none approaches the level of design achieved in 1949 by Mitchell Selligman. The architect cleverly interpreted key elements of the Art Moderne style into unique commercial architecture. The Arkansas Louisiana Gas Company contracted with local architects Selligman and Reed to design the building. The materials chosen for the building are characteristic of the Art Moderne style. The use of carriage glass panels, aluminum facia and glass block signifies a rejection of traditional building materials. The decorative use of plate glass and concrete embraces the machine aesthetic.

The need for the Arkansas Louisiana Gas Company to establish an office in Pine Bluff signifies citywide growth and industrial expansion. Today the presence of the trademark blue flame atop the vacant building serves as a reminder of the prosperity of the Post WWII era in Pine Bluff, Arkansas.

### Significance

The Arkansas Louisiana Gas Company building in Pine Bluff, Arkansas, is being nominated to the National Register of Historic Places under **Criterion C** with **local significance** as the most outstanding example of Art Moderne architecture in the cities once thriving downtown. The combination of the specified materials with the design exemplifies the Modern architectural movement in the United States. Its unique façade crowned by a pair of acrylic blue flames makes it a highly recognizable building in the downtown area of Pine Bluff.

United States Department of the Interior  
National Park Service

## National Register of Historic Places Continuation Sheet

Section number   9   Page   1  

---

### Bibliography

Baker, John Milnes, American House Styles: A Concise Guide.  
New York: W.W. Norton, 1994.

Bennett, Amy, Arkansas Historic Preservation Program, Consultation,  
September 13, 2000.

Cothren, Zac, Arkansas Historic Preservation Program, Consultation  
October 30, 2000.

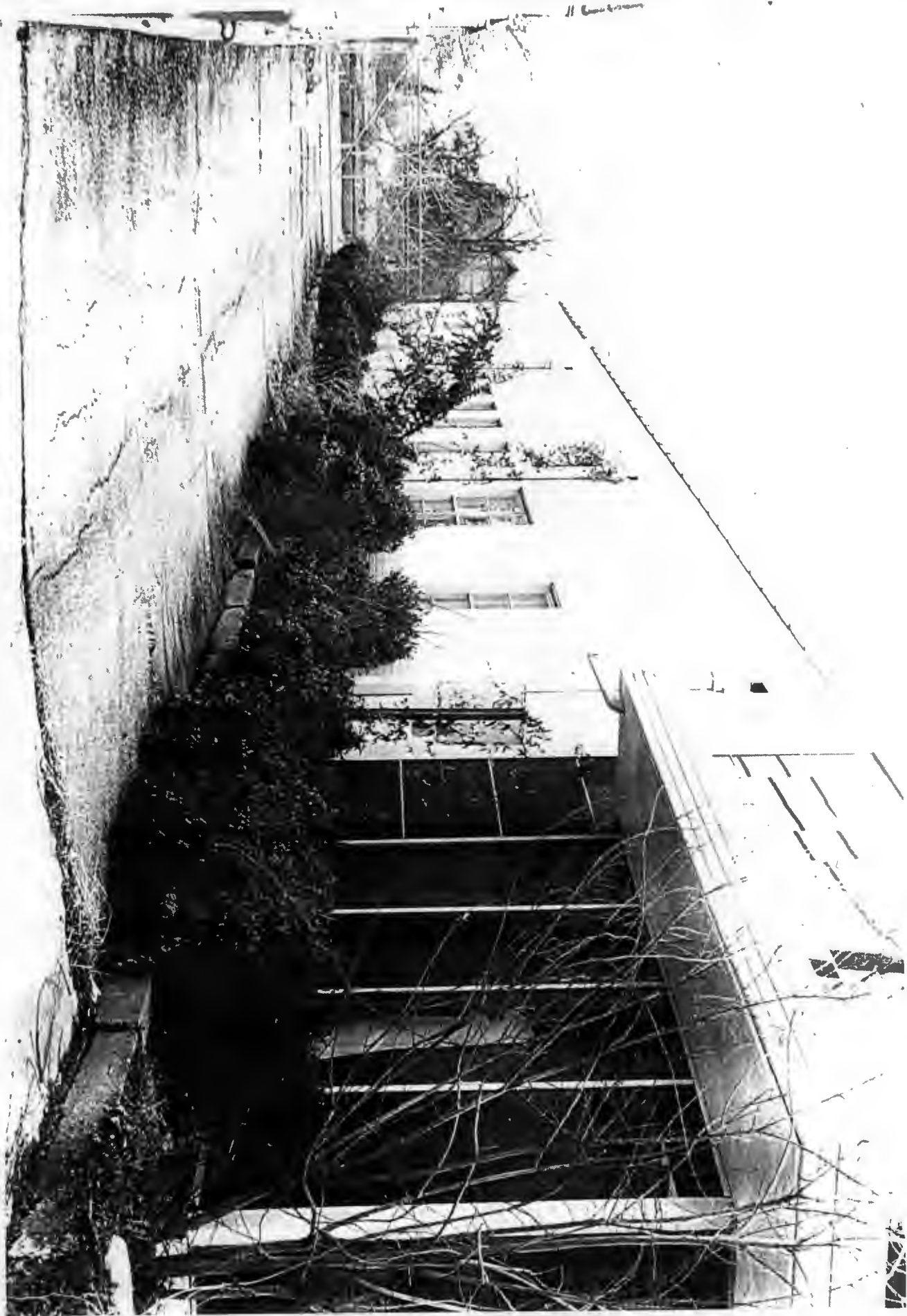
Draper, Paul, Reliant Energy ARKLA, Conversations with the author,  
August and September 2000.

Selligman & Reed Architects, Architectural Plans, 1949.

Watts, Tommy, Reliant Energy ARKLA, Interview with the author,  
September 12, 2000.

ARKANSAS  
LOUISIANA  
GAS CO

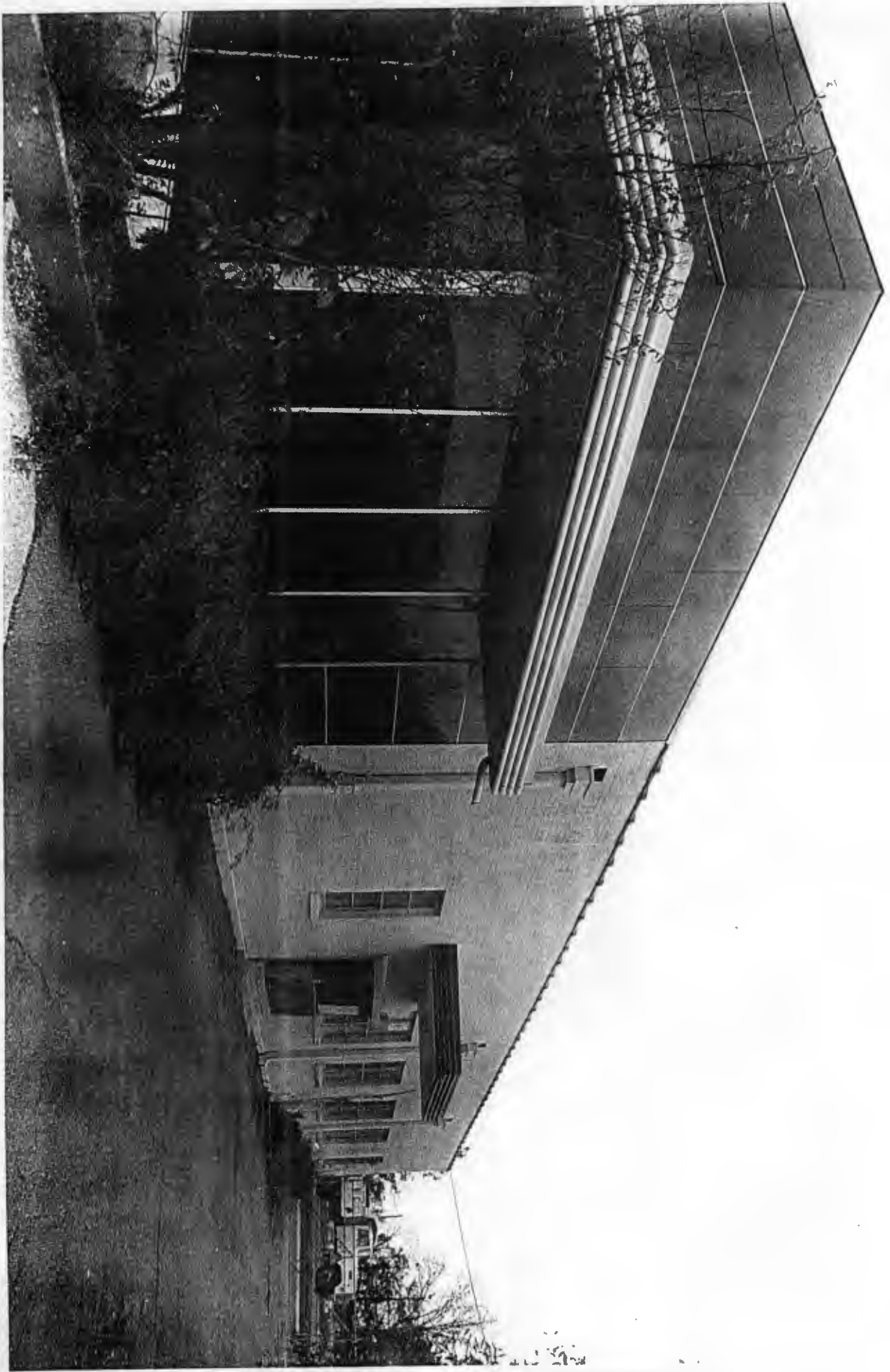




11 Court Street



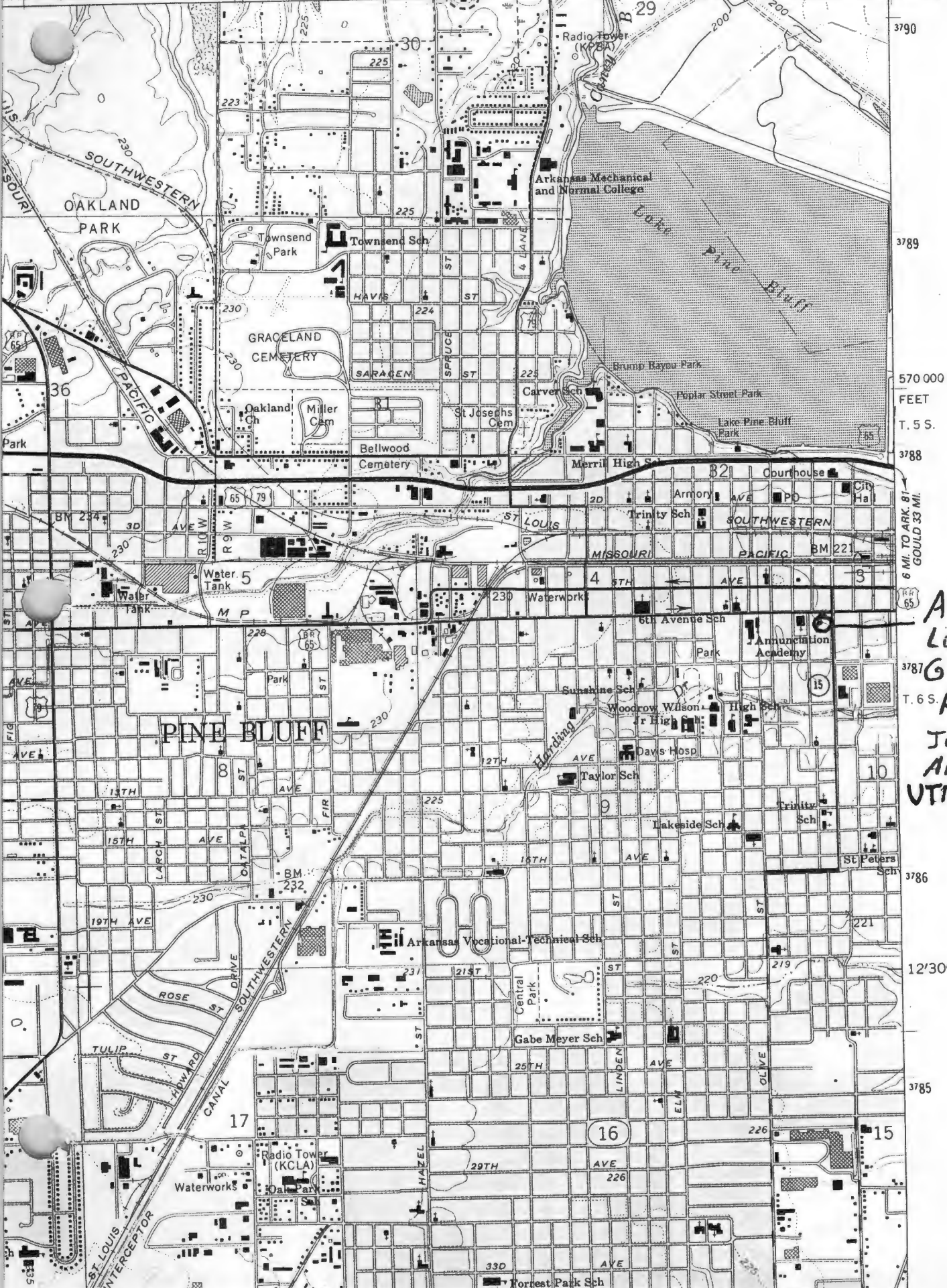
WESTE



PINE BLUFF QUADRANGLE  
ARKANSAS—JEFFERSON CO.  
7.5 MINUTE SERIES (TOPOGRAPHIC)

7652 IV SW  
(ROB ROY)

R. 10 W. 2'30" 589 | 1 990 000 FEET R. 9 W. 590 79 | STUTTGART 35 MI. 5.2 MI. TO JUNC. U.S. 79 AND ARK. 15 92°00' 34°15'



Arkansas  
Louisiana  
Gas Co. Bldg.  
Pine Bluff,  
Jefferson Co.  
AR  
UTM 15/591750  
3787190