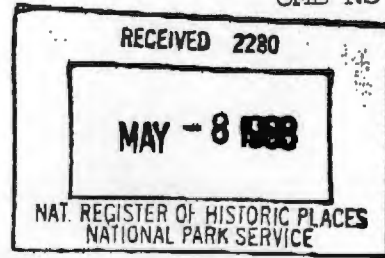


NPS Form 10-900
(Rev. 8-86)



622

United States Department of the Interior
National Park Service

**NATIONAL REGISTER OF HISTORIC PLACES
REGISTRATION FORM**

=====

1. Name of Property

=====

Historic Name: W. E. O'Bryant Bell Tower

Other Name/Site Number: University of Arkansas at Pine Bluff Bell Tower
(JE0555)

=====

2. Location

=====

Street & Number: University of Pine Bluff, 1200 North University Drive
(Located in the center of the quadrangle)

City/Town: Pine Bluff

Not for Publication: N/A

Vicinity: N/A

State: AR County: Jefferson Code: AR 069

Zip Code: 71601

=====

Classification

=====

Ownership of Property: public-State

Category of Property: STRUCTURE

Number of Resources within Property:

Contributing	Noncontributing	
_____	_____	buildings
_____	_____	sites
<u>1</u>	_____	structures
_____	_____	objects
<u>1</u>	<u>0</u>	Total

Number of contributing resources previously listed in the National Register: N/A

Name of related multiple property listing: N/A

W.E. O'Bryant Bell Tower
Name of Property

Jefferson County, Arkansas
County and State

=====
State/Federal Agency Certification
=====

As the designated authority under the National Historic Preservation Act of 1986, as amended, I hereby certify that this X nomination _____ request for determination of eligibility meets the documentation standards for registering properties in the National Register of Historic Places and meets the procedural and professional requirements set forth in 36 CFR Part 60. In my opinion, the property X meets _____ does not meet the National Register Criteria. _____ See continuation sheet

Cathryn A. Slater
Signature of certifying official

4-15-98
Date

Arkansas Historic Preservation Program
State or Federal agency and bureau

In my opinion, the property _____ meets _____ does not meet the National Register criteria. _____ See continuation sheet.

Signature of commenting or other official

Date

State or Federal agency and bureau

=====
5. National Park Service Certification
=====

I, hereby certify that this property is:

- entered in the National Register
_____ See continuation sheet.
- determined eligible for the
National Register
_____ See continuation sheet.
- determined not eligible for the
National Register
- removed from the National Register
- other (explain): _____

Elson H. Bell 6.3.98

Signature of Keeper

Date of Action

W.E. O'Bryant Bell Tower
Name of Property

Jefferson County, Arkansas
County and State

=====
Function or Use
=====

Historic: LANDSCAPE

Sub: object

Current: LANDSCAPE

Sub: object

=====
7. Description
=====

Architectural Classification:
OTHER/20th Century Collegiate Bell Tower

Materials: foundation CONCRETE roof CONCRETE
walls BRICK other CONCRETE

Describe present and historic physical appearance:

Summary

The W. E. O'Bryant Bell Tower was built from 1943-1947 utilizing concrete and red brick. Located at 1200 North University Drive in the center of the quadrangle on the campus of the University of Arkansas at Pine Bluff, the collegiate bell tower is essentially a buttressed square structure resting on a base of five poured concrete stairs. Besides containing the original bell, the structure also includes an electric clock with four faces. Although the bell tower is currently in need of minor mortar repointing and clock repair, the structure is in good condition, and the only alterations have been the removal of a water fountain and the addition of loudspeakers.

Elaboration

Construction on the W. E. O'Bryant Bell Tower began in 1943 and was completed in 1947. The structure is located in the center of the quadrangle on the campus of the University of Arkansas at Pine Bluff. The structure rests upon a base of five poured concrete stairs which are painted green and on an additional base of concrete which has been painted white. The wire-cut red brick structure is three "stories" in height each level defined by a concrete band. The buttresses at the bell tower's flattened corners also follow this alternating pattern of red brick and concrete.

ground level the bell tower contains an open archway on all four

W.E. O'Bryant Bell Tower
Name of Property

Jefferson County, Arkansas
County and State

Observations. The semi-circular arches are constructed with conventional brick with the benefit of voussoirs or keystones. A water fountain once stood in the center, but was removed in 1979. The ceiling of first level is concrete and contains an open access hatch to the bell. This level is crowned by a band of concrete pedimented parapets on all sides. The second level belfry contains the original bell along with its wooden frame inside the four segmental brick arches. Originally, wood louvers filled the arches, but now they contain loud speakers which amplify the chimes of the Hammond organ in the Caldwell Auditorium. Separating this level from the third level is a simple band of concrete. The third level is punctured by four clock faces on which some of the numbers are worn or faded away. The concrete cap at the top of the tower imparts a ziggurat effect.

Although the bell tower is currently in need of minor mortar repointing and clock repairs, the structure is in good condition, and the only alterations have been the removal of a water fountain and the addition of loudspeakers.

W.E. O'Bryant Bell Tower
Name of Property

Jefferson County, Arkansas
County and State

=====
Statement of Significance
=====

Certifying official has considered the significance of this property in relation to other properties: local.

Applicable National Register Criteria: C

Criteria Considerations (Exceptions): N/A

Areas of Significance: ARCHITECTURE

Period(s) of Significance: 1943-1947
Significant Dates: 1943-1947

Significant Person(s): N/A

Cultural Affiliation: N/A

Architect/Builder: Mazique, A. A. (Builder)

State significance of property, and justify criteria, criteria considerations, and areas and periods of significance noted above:

Summary

Built from 1943 to 1947, the W. E. O'Bryant Bell Tower is one of the main focal points on the University of Arkansas at Pine Bluff campus. The bell tower stands in the center of the quadrangle and was constructed by Mr. A. A. Mazique, an instructor in brick masonry, along with the help of students and the Agricultural, Mechanical and Normal College Alumni Association. The W. E. O'Bryant Bell Tower is being nominated to the National Register under **Criterion C with local significance** as an excellent example of a collegiate bell tower.

Elaboration

Branch Normal College, now known as the University of Arkansas at Pine Bluff was created in 1873 by an act of the Legislature as a branch of the Arkansas Industrial University, now the University of Arkansas. Branch Normal College opened on September 27, 1875, in a rented frame building on the corner of Sevier and Lindsey Streets in the city of Pine Bluff. In 1882 the school moved to a two-story brick structure, erected by state

W. E. O'Bryant Bell Tower
Name of Property

Jefferson County, Arkansas
County and State

ds on a fifty-acre plot in the suburbs of Pine Bluff. Between 1881 and 1894, the school conferred ten B.A. Degrees. From 1894 to 1929, the school operated as a junior college.

In 1927, Governor Thomas Jefferson Terrel appointed an independent board of trustees for the college, and the state legislature appropriated the needed funds. Construction soon began on a new university complex just outside the city limits. One of the buildings that forms the quadrangle is Caldwell Hall, an administration building that was placed on the National Register (12/22/82) as part of the "Structures in Arkansas Represented By The Charles Thompson Design Collection" thematic nomination.

In 1929, the school expanded, becoming a standard four-year degree-granting institution and in 1933 was certified as a standard four-year college. Two years later in 1935, a building program provided eight residences for instructors and a gymnasium, and in 1938 another building program afforded two more dormitories and a library.

Toward the end of the 1940's an extensive building program began that eventually doubled the college's facilities. Included in this building program was the bell tower that was dedicated up on its completion as the W. E. O'Bryant Bell Tower. The bell tower was built from 1943 to 1947 by Mr. A. A. Mazique under the administration of Lawrence A. Davis, Sr. who was president of the college from 1943-1972. The three-story, red brick, W. E. O'Bryant Bell Tower is being nominated to the National Register under Criterion C with local significance as an excellent example of a collegiate bell tower and the only example of such a structure in the city of Pine Bluff.

W.E. O'Brvant Bell Tower
Name of Property

Jefferson County, Arkansas
County and State

=====

9. Major Bibliographical References

=====

Information provided by Delois D. Johnson, Associate Library Director,
UAPB, April, 1997.

Information provided on internet: <http://www.uapb.edu>.

Previous documentation on file (NPS):

- preliminary determination of individual listing (36 CFR 67) has been requested.
- previously listed in the National Register
- previously determined eligible by the National Register
- designated a National Historic Landmark
- recorded by Historic American Buildings Survey # _____
- recorded by Historic American Engineering Record # _____

Primary Location of Additional Data:

- State historic preservation office
- Other state agency
- Federal agency
- Local government
- University
- Other -- Specify Repository: _____

=====

10. Geographical Data

=====

Acreeage of Property: less than one

UTM References:	Zone	Easting	Northing	Zone	Easting	Northing
	A	15	590340	3789340	B	_____
	C	_____	_____	D	_____	_____

Verbal Boundary Description:

Center of the quadrangle at the University of Arkansas at Pine Bluff.

W.E. O'Bryant Bell Tower
Name of Property

Jefferson County, Arkansas
County and State

Boundary Justification:

This boundary contains all remaining historically significant structures associated with this property.

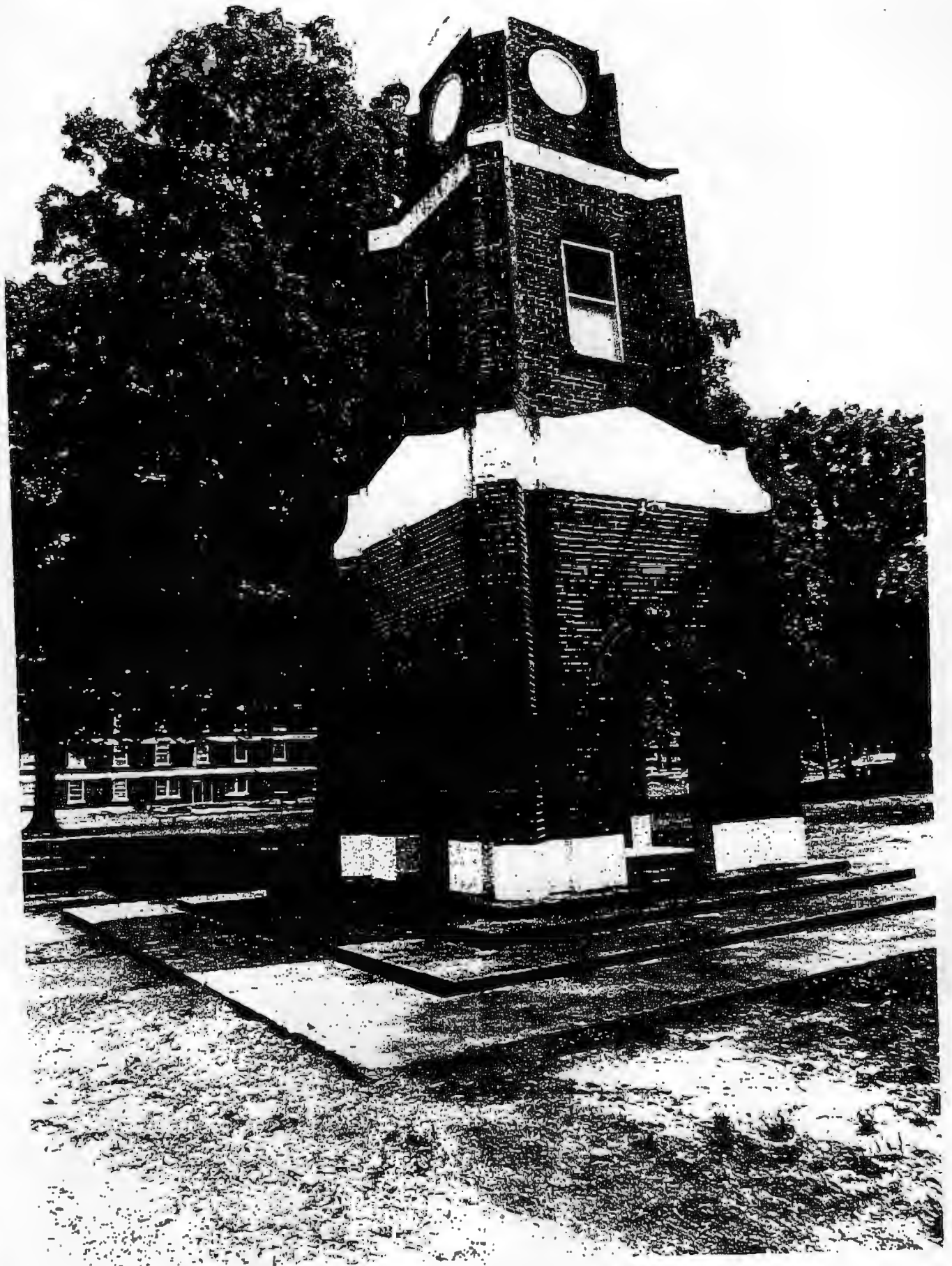
=====
11. Form Prepared By
=====

Name/Title: Amy Bennett, Survey Historian

Organization: Arkansas Historic Preservation Program Date: 4/05/98

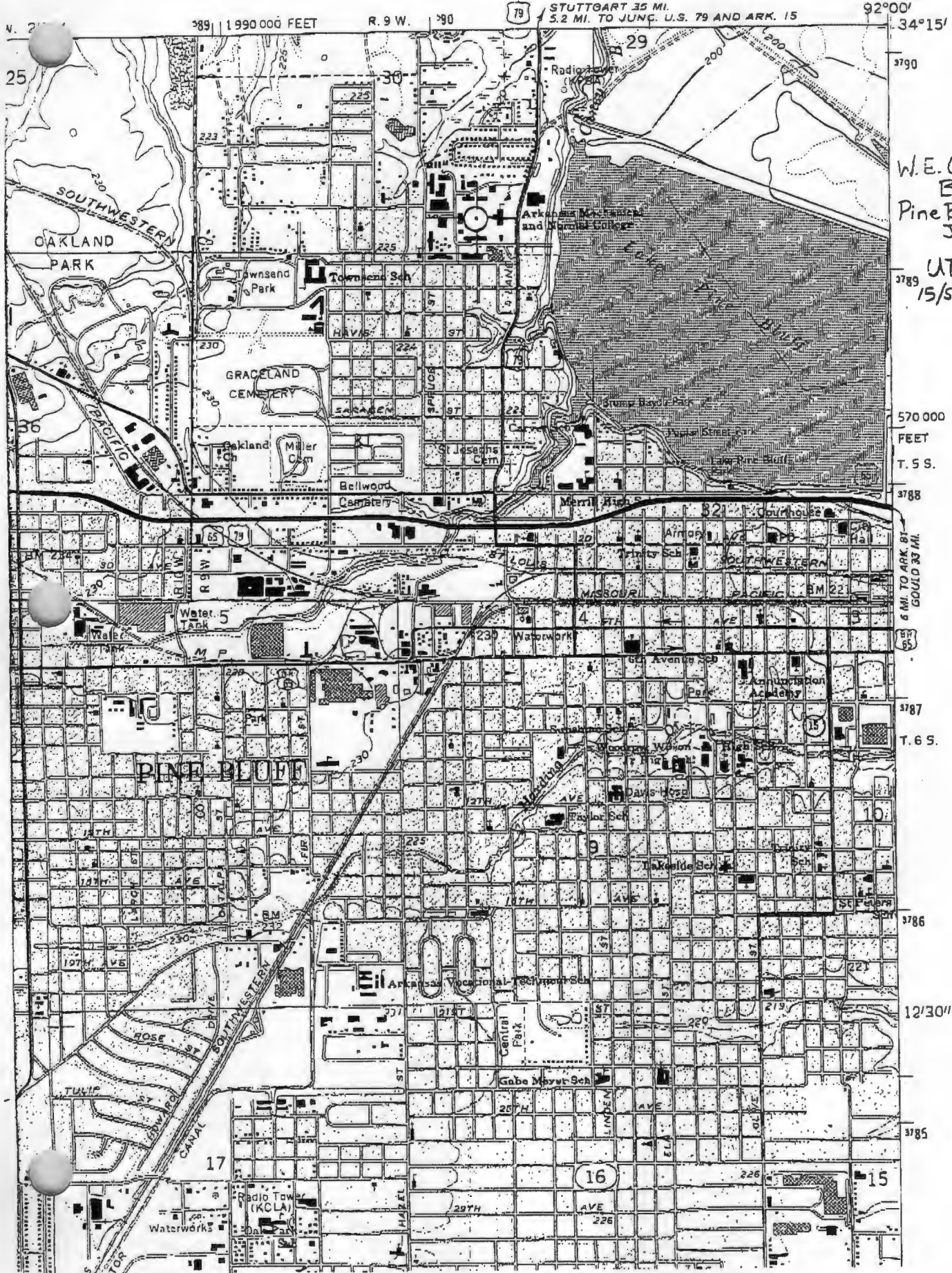
Street & Number: 1500 Tower Bldg., 323 Center St. Telephone: (501) 324-9880

City or Town: Little Rock State: AR ZIP: 72201



PINE BLUFF QUADRANGLE ARKANSAS—JEFFERSON CO. 7.5 MINUTE SERIES (TOPOGRAPHIC)

7652 (4 SW
1908 ROY)



W.E. O'Bryant
Bell Tower
Pine Bluff,
Jefferson Co,
AR
UTM Reference
15/590340/37893

570 000
FEET
T. 5 S.

3788

6 MI. TO ARK. ST.
GOULD 33 MI.
3787

T. 6 S.

3786

12'30"

3785

16

15