

United States Department of the Interior
National Park Service

NATIONAL REGISTER OF HISTORIC PLACES
REGISTRATION FORM

=====

1. Name of Property

=====

historic name: West James Street Overpass

other name/site number: JE0534

=====

2. Location

=====

street & number: West James Street at crossing of Union-Pacific Railroad

not for publication: N/A

city/town: Redfield

vicinity: X

state: AR county: Jefferson code: AR 069 zip code: 72132

=====

3. Classification

=====

Ownership of Property: Public-local

Category of Property: Structure

Number of Resources within Property:

Contributing Noncontributing

<u> </u>	<u> </u>	buildings
<u> </u>	<u> </u>	sites
<u> 1 </u>	<u> </u>	structures
<u> </u>	<u> </u>	objects
<u> 1 </u>	<u> 0 </u>	Total

Number of contributing resources previously listed in the National Register: N/A

Name of related multiple property listing: Historic Bridges of Arkansas

=====
4. State/Federal Agency Certification
=====

As the designated authority under the National Historic Preservation Act of 1986, as amended, I hereby certify that this X nomination _____ request for determination of eligibility meets the documentation standards for registering properties in the National Register of Historic Places and meets the procedural and professional requirements set forth in 36 CFR Part 60. In my opinion, the property X meets _____ does not meet the National Register Criteria. _____ See continuation sheet.

Cathryn A. Slater _____ 4-5-95
Signature of certifying official Date

Arkansas Historic Preservation Program
State or Federal agency and bureau

In my opinion, the property _____ meets _____ does not meet the National Register criteria. _____ See continuation sheet.

Signature of commenting or other official Date

State or Federal agency and bureau

=====
5. National Park Service Certification
=====

I, hereby certify that this property is:

- _____ entered in the National Register _____
_____ See continuation sheet.
- _____ determined eligible for the _____
National Register _____
- _____ See continuation sheet.
- _____ determined not eligible for the _____
National Register _____
- _____ removed from the National Register _____
- _____ other (explain): _____

Signature of Keeper Date
of Action

=====
6. Function or Use
=====

Historic: TRANSPORTATION Sub: Road-related

Current: TRANSPORTATION Sub: Road-related

=====
9. Major Bibliographical References
=====

See "Historic Bridges of Arkansas" MPS Nomination, Section H.

___ See continuation sheet.

Previous documentation on file (NPS):

- preliminary determination of individual listing (36 CFR 67) has been requested.
- previously listed in the National Register
- previously determined eligible by the National Register
- designated a National Historic Landmark
- recorded by Historic American Buildings Survey # _____
- recorded by Historic American Engineering Record # _____

Primary Location of Additional Data:

- X State historic preservation office
- Other state agency
- Federal agency
- Local government
- University
- Other -- Specify Repository: _____

=====
10. Geographical Data
=====

Acreage of Property: Less than one

UTM References:	Zone	Easting	Northing	Zone	Easting	Northing
A	<u>15</u>	<u>574880</u>	<u>3811660</u>	B	<u>15</u>	_____
C	<u>15</u>	_____	_____	D	<u>15</u>	_____

___ See continuation sheet.

Verbal Boundary Description: ___ See continuation sheet.

Beginning at a point formed by the intersection of the northwestern edge of West James Street with a perpendicular line running parallel with the northeastern end of the bridge and located approximately 25 feet to the northeast thereof, proceed northwesterly for a distance of approximately 25 feet to its intersection with a perpendicular line running parallel with the bridge's northwestern side; thence proceed southwesterly along said line for a distance of approximately 181 feet to its intersection with a perpendicular line; thence proceed southeasterly along said line for a distance of approximately 76.5 feet to its intersection with a perpendicular line; thence proceed northeasterly along said line for a distance of approximately 181 feet to its intersection with a perpendicular line; thence proceed northwesterly to the point of beginning.

Boundary Justification: ___ See continuation sheet.

This boundary includes all the property historically associated with this resource.

=====
11. Form Prepared By
=====

Name/Title: Ken Story, National Register/Survey Coordinator
Organization: Arkansas Historic Preservation Program Date: 04/04/95
Street & Number: 323 Center Street, Suite 1500 Telephone: (501) 324-9880
City or Town: Little Rock State: AR Zip: 72201

United States Department of the Interior
National Park Service

National Register of Historic Places Continuation Sheet

Section number 7 Page 1

Description

Located on West James Street at the point where it crosses the Missouri-Pacific Railroad line (approximately two blocks east of State Highway 365), the West James Street Overpass is of the wooden trestle bridge type. It consists of a total of six spans, the longest of which measures 22 feet. Its total length is 131 feet, with a deck width of 20 feet and an overall width of 26.5 feet. The abutments are a combination of wood and concrete, and the piers are timber resting upon concrete bases. The deck material is timber. The balustrade is constructed of concrete pillar uprights with metal pipe railings.

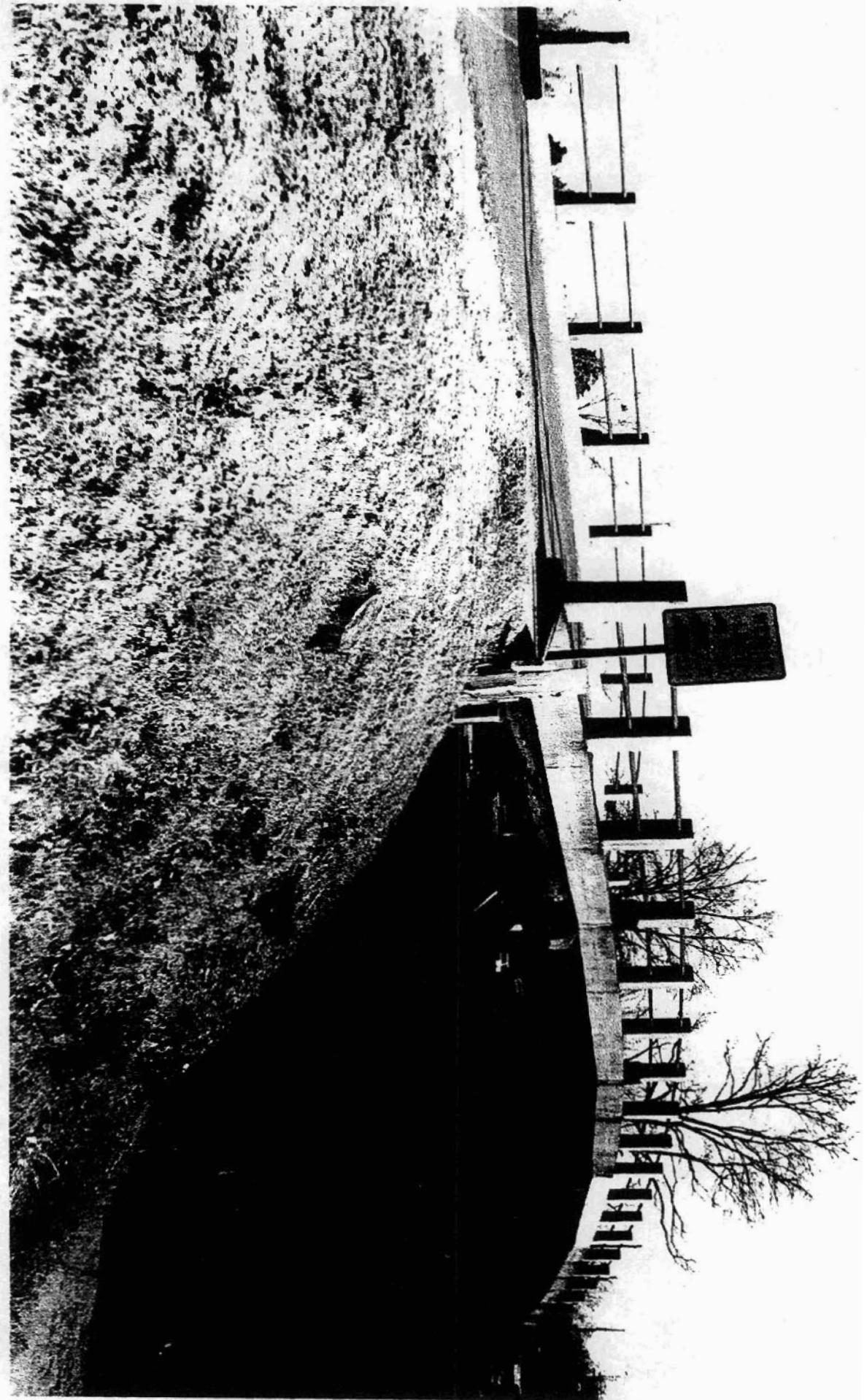
United States Department of the Interior
National Park Service

National Register of Historic Places Continuation Sheet

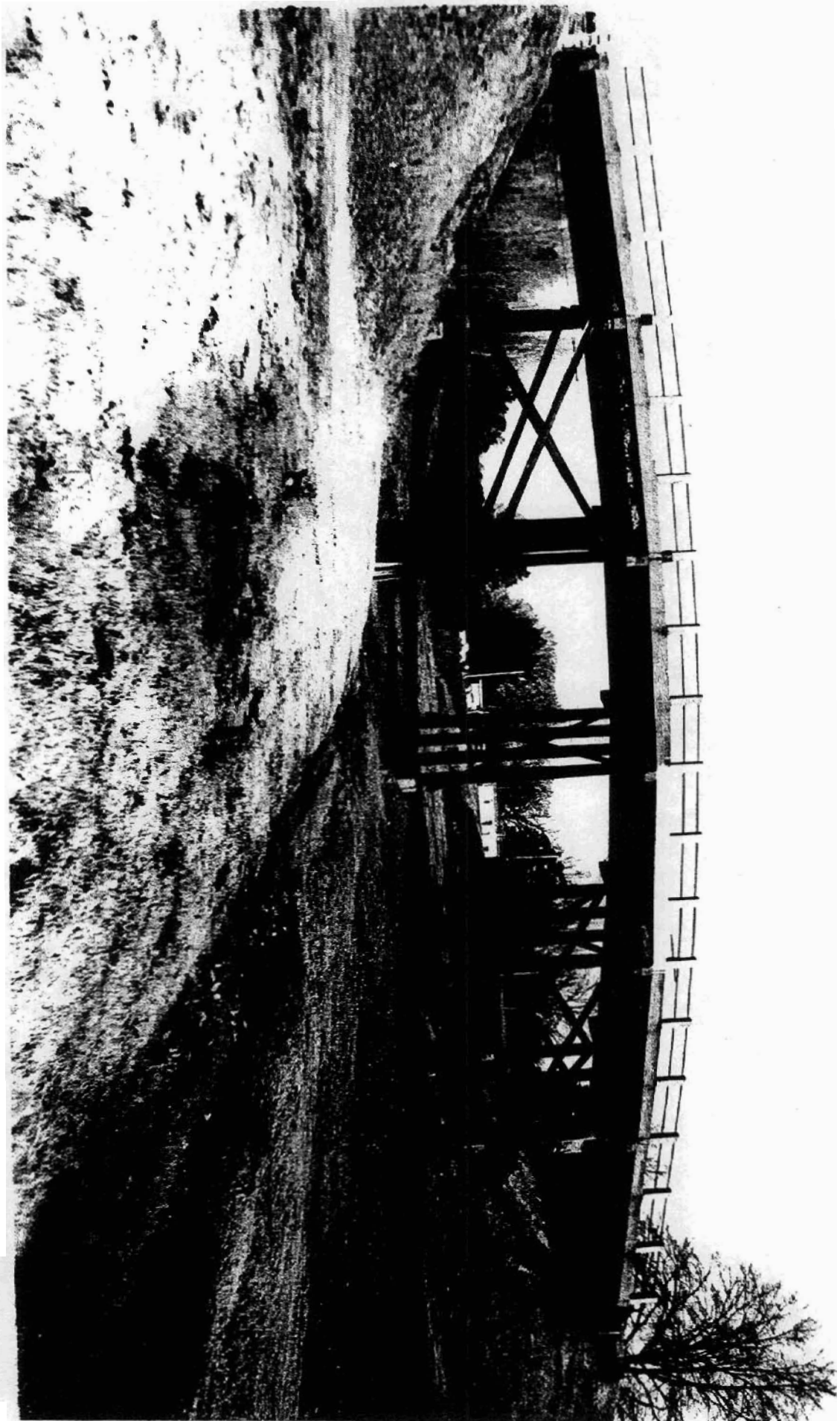
Section number 8 Page 1

Significance

Constructed in 1924, the West James Street Overpass is associated with the *Arkansas Highway and Transportation Era* historic context and is of the timber wooden trestle type. Though the identity of its original designer does not survive, it was constructed in conjunction with the Arkansas State Highway Commission and thus may well have been designed by one of that state agency's engineers. Given its relatively intact condition it retains sufficient integrity to remain associated with its historic period and is thus locally eligible under Criterion C.







3812

Class V Areas
Vb Overpass
Kearney
Vz. P. 5011 R
APL

15/574.880/
3P/1600

(WRIGHT)
7552 1 NE
118E

3810

3809

25'

3808

