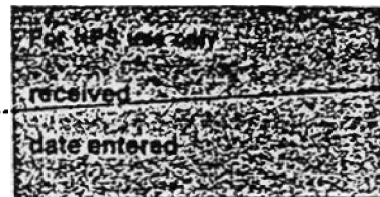


National Register of Historic Places  
Inventory—Nomination Form



Continuation sheet

102

Item number 1,2,4,6, & 10

Page 1

INDIVIDUAL DATA SHEET

General Description

Code: JE-057

Congressional District: Fourth

Name: State of Ark.-Public School

Current Owner: University of Ark. at Pine Bluff  
Lloyd B. Hackley, Chancellor

Address: University Drive  
Pine Bluff, Arkansas

Address: University Drive  
Pine Bluff, Arkansas 71601

County: Jefferson

Architectural Information

Architectural Firm: Thompson, Sanders, & Ginocchio

Date of Construction: 1928

Stylistic Influence: Gothic Revival

Original Use: School

Present Use: School

Geographical Information

UTM Reference: 15 590300/3789250

Acreage: Less than one

Verbal Boundary Description: R9W T6S S30

The boundaries of the nominated property extend 100 feet from each exterior wall.

Condition

Excellent  
 Good  
 Fair

Deteriorated  
 Ruins  
 Unexposed

Unaltered  
 Altered

United States Department of the Interior  
National Park Service

# National Register of Historic Places Inventory—Nomination Form

For NPS use only
RECEIVED
date entered

Continuation sheet 103

Item number 7 &amp; 8

Page 2

Code: JE-057

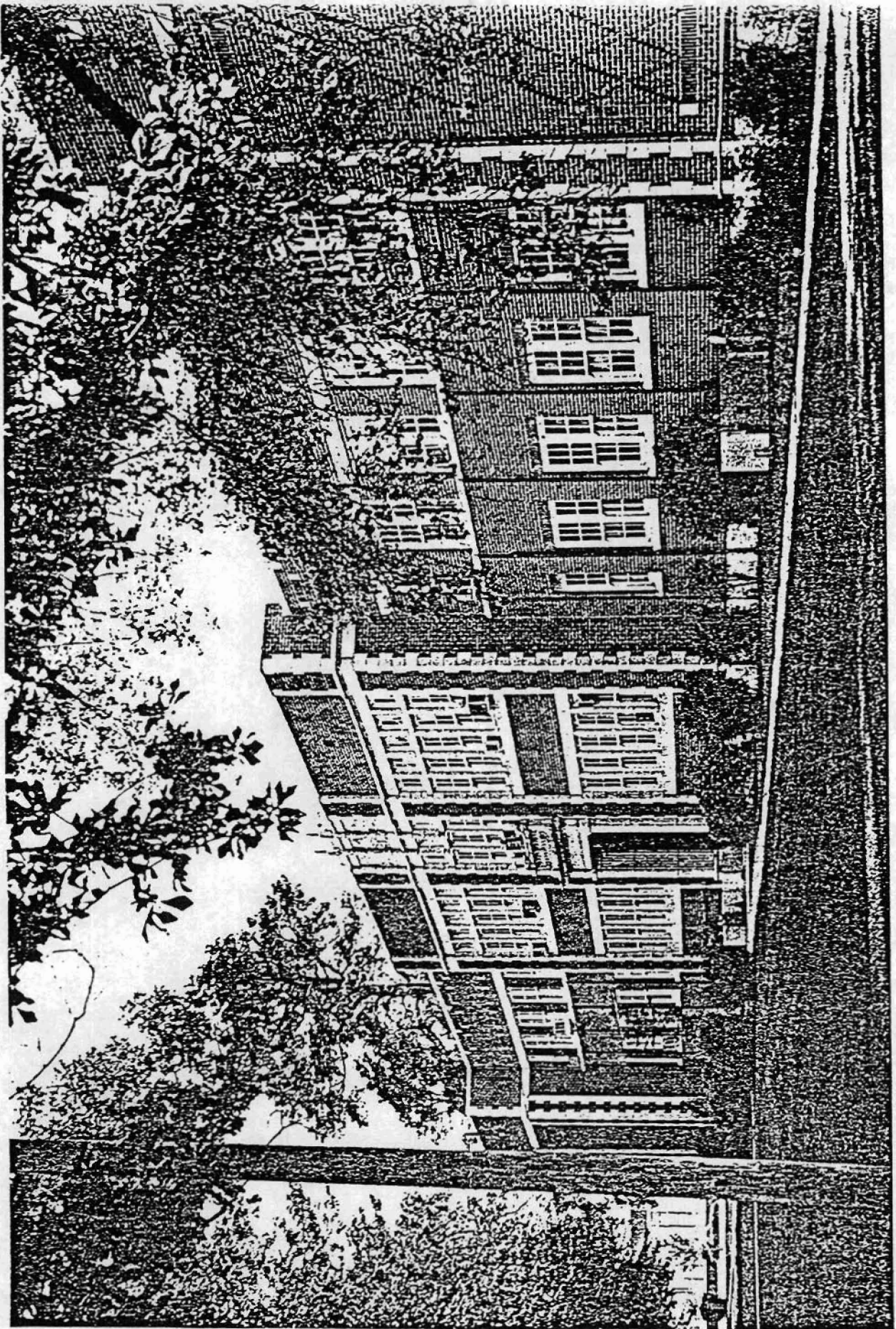
(University Drive, Pine Bluff, AR)

## Physical Description

This two-story brick building with flat roof is quite long, its facade being organized into a slightly projecting central section, marked by a heightened parapet, and two projecting end bays. The use of banks of multi-paned sash windows, red brick trimmed generously with light-colored cast stone (most noticeably in quoins and Gibbs surrounds) and classical details creates a traditional and small-scale effect which counteracts the large size of the building and its modern, simple massing. Decorating the recessed central doorway are fluted stone pilasters which support a full entablature with the name "Caldwell Hall" inscribed on the frieze and surmounted by stone plinths framing a balustrade of urn-shaped balusters. The parapet over the entrance features three stone panels carved with Art Deco-inspired motifs inscribed with the original name of the college: "Agriculture," "Mechanical," and "Normal." Two fluted stone piers with pointed finials separate these panels, extending well above and below them to create somewhat streamlined points of accent.

## Statement of Significance

Constructed for an Arkansas Negro college in Pine Bluff, Arkansas, Caldwell Hall was designed by the Thompson, Sanders and Ginocchio firm in 1928. This large, handsomely detailed building set amidst a large expanse of tree-shaded lawn is an impressive and dignified structure on this college campus. The generous cast stone trim (forming a lively contrast against the red brick walls) including quoins, Gibbs surrounds and the classical elements of the entryway create a formal, yet small-scale effect in this large building. The distinctive and eye-catching central panel with its Art Deco carved panels and streamlined piers reflect an unusual eclectic blend of Art Deco and Classical elements. A striking building set well off the highway which extends in front of it, Caldwell Hall is an attractive landmark on the southern Arkansas college campus.





PINE BLUFF QUADRANGLE

ARKANSAS—JEFFERSON CO.

7.5 MINUTE SERIES (TOPOGRAPHIC)

7652 IV SW  
(ROB ROY)

2'30"

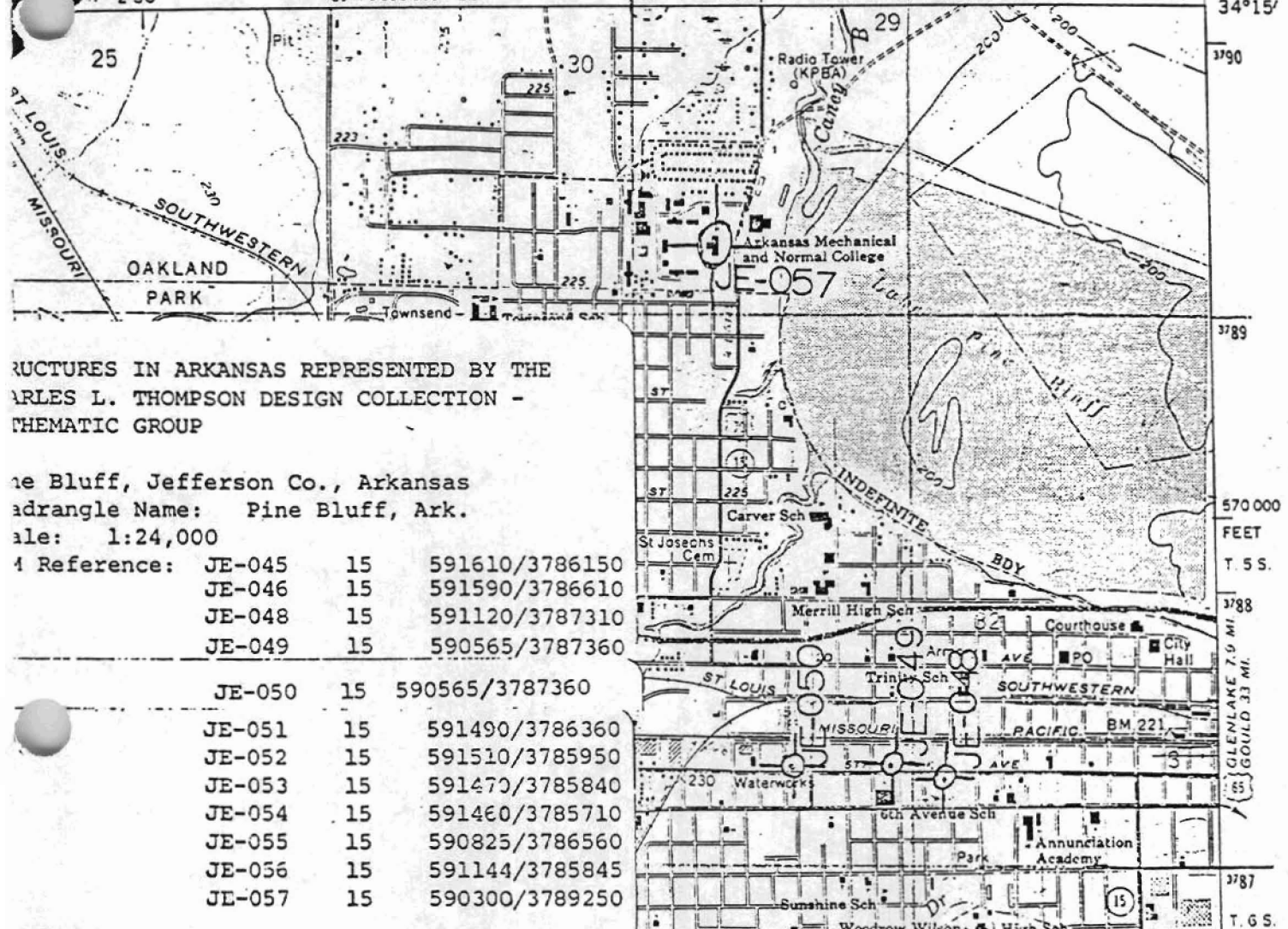
589 1 990 000 FEET

R 9 W 90

STUTTGART 35 MI.  
5.2 MI. TO JUNQ. U.S. 79 AND ARK. 15

92°00'

34°15'



STRUCTURES IN ARKANSAS REPRESENTED BY THE  
CHARLES L. THOMPSON DESIGN COLLECTION -  
THEMATIC GROUP

Pine Bluff, Jefferson Co., Arkansas  
Quadrangle Name: Pine Bluff, Ark.  
Scale: 1:24,000

Reference:	JE-045	15	591610/3786150
	JE-046	15	591590/3786610
	JE-048	15	591120/3787310
	JE-049	15	590565/3787360
	JE-050	15	590565/3787360
	JE-051	15	591490/3786360
	JE-052	15	591510/3785950
	JE-053	15	591470/3785840
	JE-054	15	591460/3785710
	JE-055	15	590825/3786560
	JE-056	15	591144/3785845
	JE-057	15	590300/3789250

