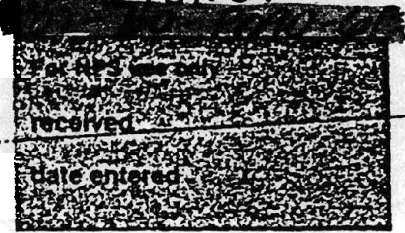


United States Department of the Interior
National Park Service

EXP 12/31/84

National Register of Historic Places
Inventory—Nomination Form



Continuation sheet 166 Item number 1,2,4,6, & 10 Page 1

INDIVIDUAL DATA SHEET

General Description

Code: JE-045	Congressional District: Fourth
Name: Hudson House	Current Owner: Adele Hudson
Address: 304 West 15th Pine Bluff, Arkansas	Address: 304 West 15th Pine Bluff, Arkansas
County: Jefferson	

Architectural Information

Architectural Firm: Charles Thompson	
Date of Construction: 1911	Stylistic Influence: Craftsman
Original Use: Residence	Present Use: Residence

Geographical Information

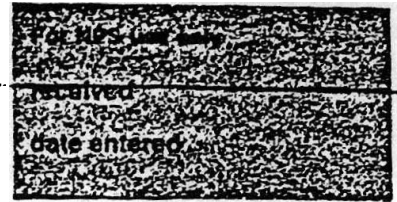
UTM Reference: 15 591610/3786150	Acreage: Less than one
Verbal Boundary Description: Dexter Harding Addition Block 62, NE 1/4 of Block 62	

Condition

<input checked="" type="checkbox"/> Excellent	<input type="checkbox"/> Deteriorated	<input type="checkbox"/> Unaltered
<input type="checkbox"/> Good	<input type="checkbox"/> Ruins	<input checked="" type="checkbox"/> Altered
<input type="checkbox"/> Fair	<input type="checkbox"/> Unexposed	

United States Department of the Interior
National Park Service

**National Register of Historic Places
Inventory—Nomination Form**



Continuation sheet

167

Item number 7 & 8

Page 2

Code: JE-045

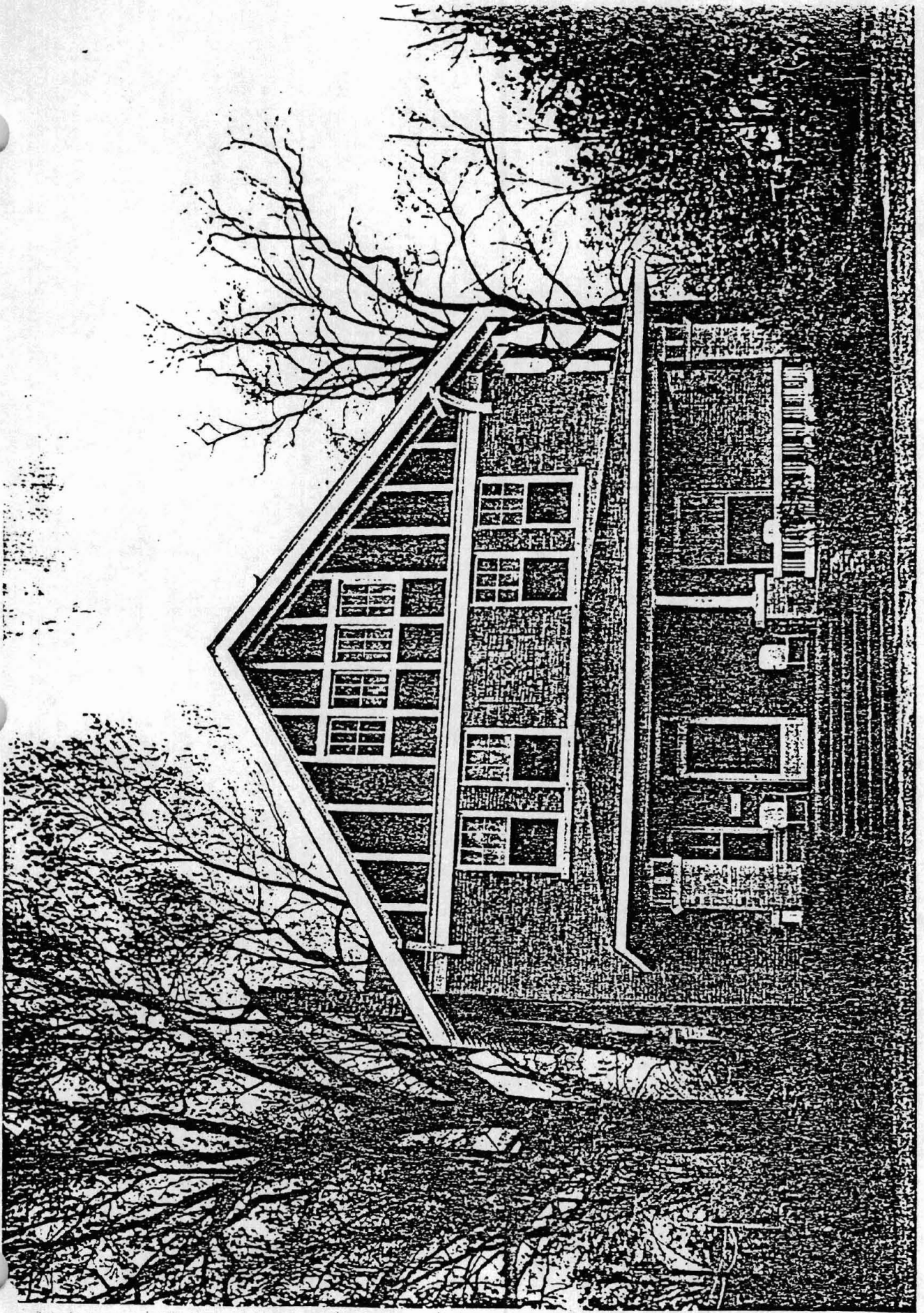
(304 W. 15th, Pine Bluff, AR)

Physical Description

This house designed by Charles Thompson in 1911 is characterized by simple, broad massing and Craftsman details. The two-story structure with front gable roof is faced with brown brick and features a full length front porch with shallow hipped roof supported by brick piers. Dominating the facade is the prominent front gable infilled with pseudo half-timbering and a group of four multi-paned windows. Large brackets accentuate the gable. Single gable roof dormers pierce the roof of the side elevations. Marking the ground floor facade is a plate glass front door and wide sash window with ten-over-one lights. The second story sash windows on the facade are arranged symmetrically and have six-over-one lights.

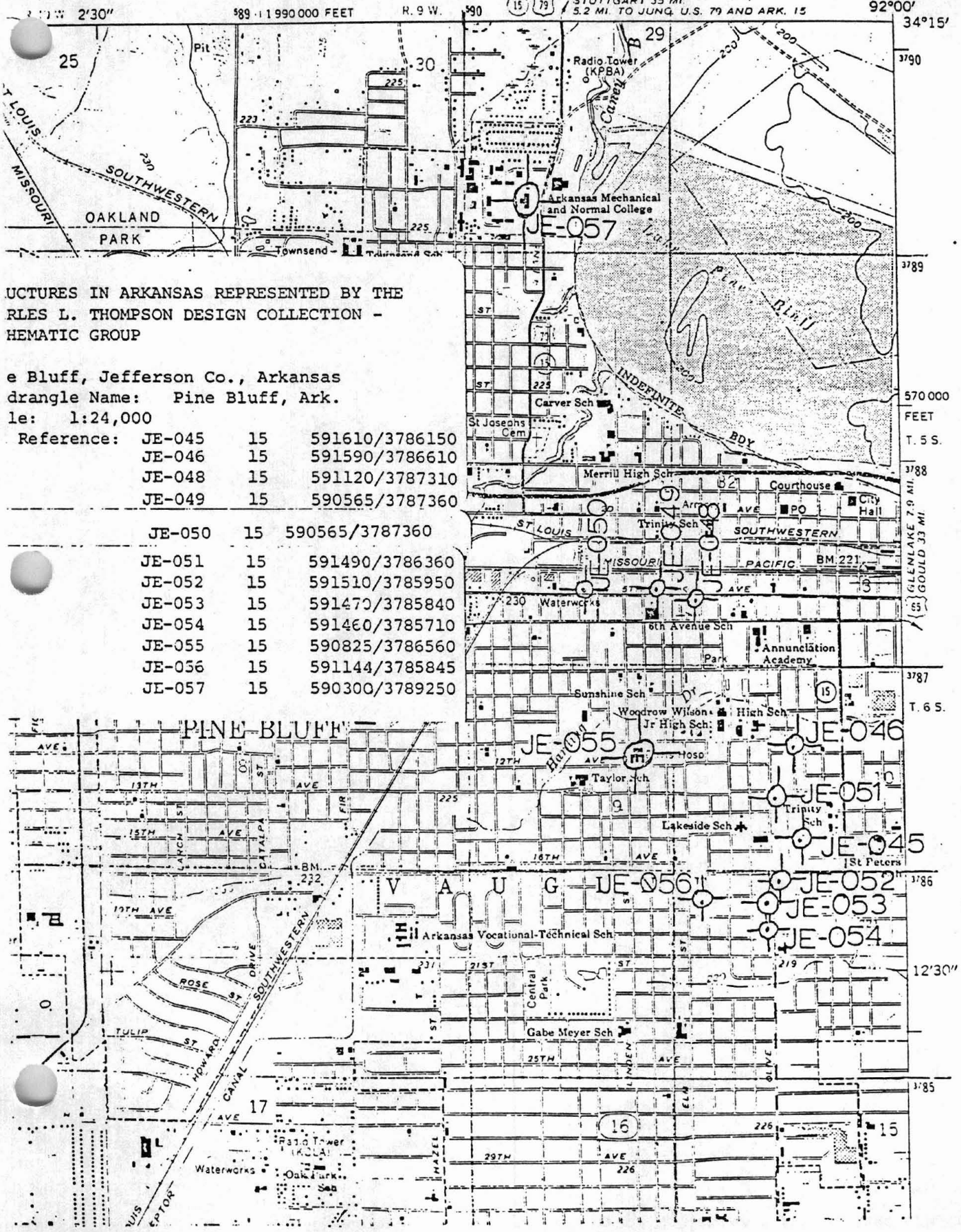
Statement of Significance

The Hudson House in Pine Bluff offers a good example of Charles L. Thompson's Craftsman styling in its most simple form. Built in 1913, the house is a two-story brick building featuring a prominent expanse of half-timbering effects in the gable end on the facade. A full length hip roof porch is found on the first floor of the facade. A spacious house, the design offers no pretensions and presents a solid Craftsman-like appearance.



PINE BLUFF QUADRANGLE
 ARKANSAS—JEFFERSON CO.
 7.5 MINUTE SERIES (TOPOGRAPHIC)

7522 IV SW
 (ROB ROY)



STRUCTURES IN ARKANSAS REPRESENTED BY THE
 PICTURES OF L. THOMPSON DESIGN COLLECTION -
 GRAPHIC GROUP

Pine Bluff, Jefferson Co., Arkansas
 Quadrangle Name: Pine Bluff, Ark.
 Scale: 1:24,000

Reference:	JE-045	15	591610/3786150
	JE-046	15	591590/3786610
	JE-048	15	591120/3787310
	JE-049	15	590565/3787360

	JE-050	15	590565/3787360
	JE-051	15	591490/3786360
	JE-052	15	591510/3785950
	JE-053	15	591470/3785840
	JE-054	15	591460/3785710
	JE-055	15	590825/3786560
	JE-056	15	591144/3785845
	JE-057	15	590300/3789250

