

United States Department of the Interior
National Park Service

EXP. 12/31/84
105-7090-61

National Register of Historic Places
Inventory—Nomination Form

For NPS use only
received _____
date entered _____

Continuation sheet

176

Item number 1, 2, 4, 6 & 10

Page 1

INDIVIDUAL DATA SHEET

General Description

Code: JE-051

Congressional District: Fourth

Name: Fox House

Current Owner: Hendrix Arthur Taylor, Jr.

Address: 1303 South Olive
Pine Bluff, Arkansas

Address: 1303 South Olive
Pine Bluff, Arkansas

County: Jefferson

Architectural Information

Architectural Firm: Sanders

Date of Construction: ca. 1910

Stylistic Influence: Craftsman

Original Use: Residence

Present Use: Residence

Geographical Information

UTM Reference: 15 591490/3786360

Acreage: Less than one

Verbal Boundary Description: Dexter Harding Addition
Block 45, N. 148' exc. E. 75' of Blk. 45

Condition

Excellent
 Good
 Fair

Deteriorated
 Ruins
 Unexposed

Unaltered
 Altered

National Register of Historic Places Inventory—Nomination Form

For NPS use only
received
date entered

Continuation sheet 177

Item number 7 & 8

Page 2

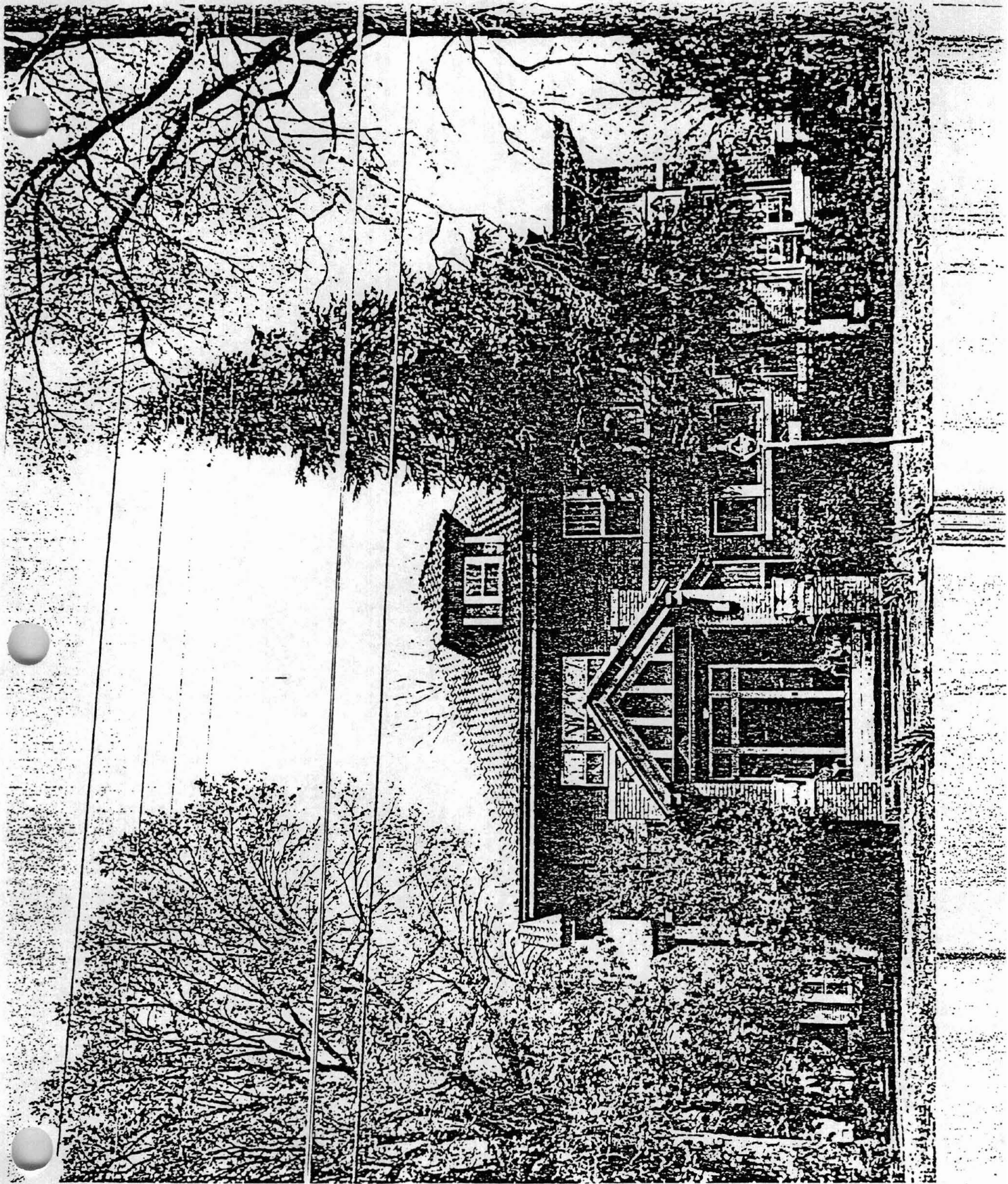
Code: JE-051 (1303 S. Olive, Pine Bluff, AR)

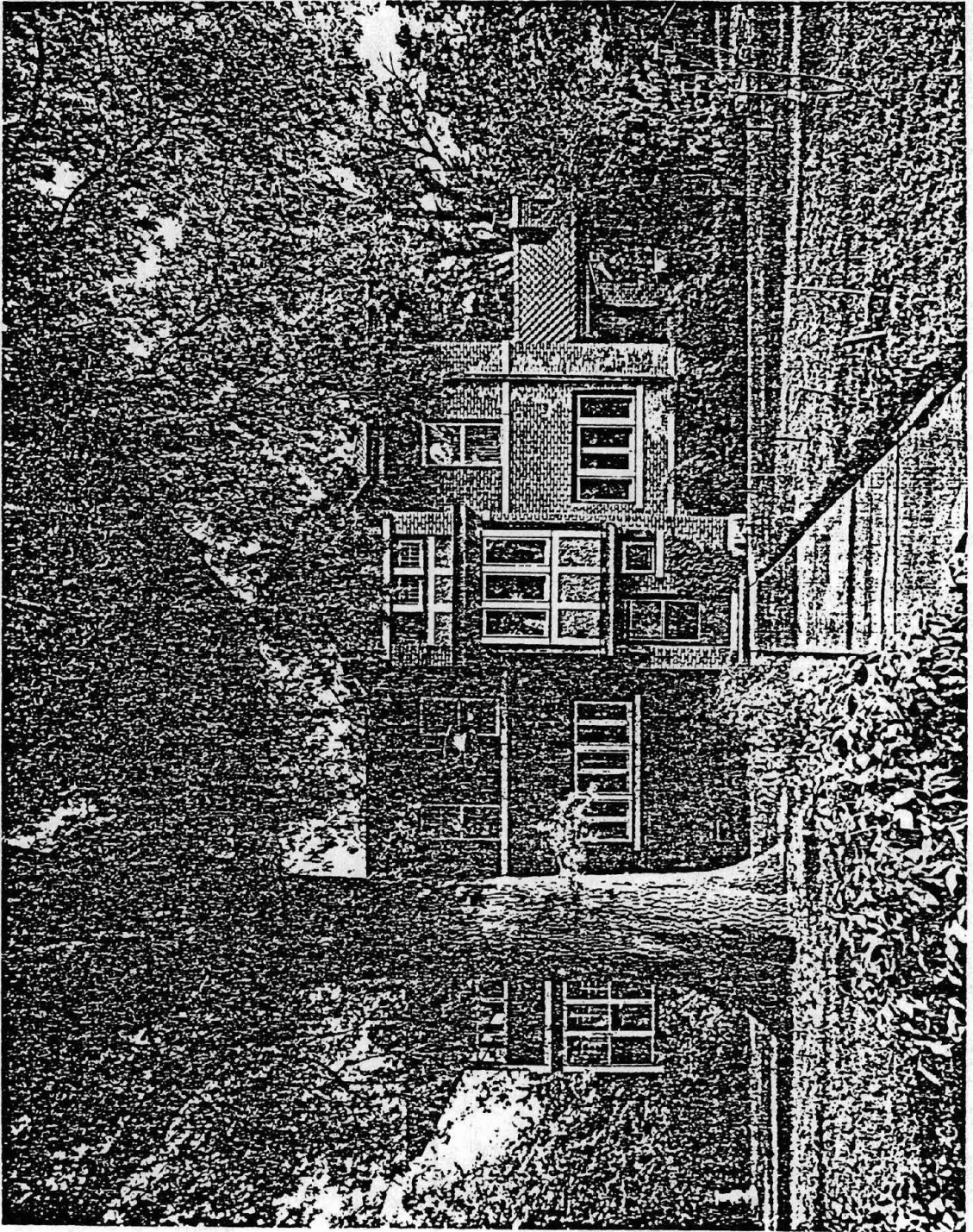
Physical Description

A variety of textures and materials, asymmetrical arrangement of certain elements and fenestration of differing sizes combine to create a rather lively effect which offsets to a degree the large size of this structure. The characteristic tile hipped roof with flared overhanging eaves caps the two-story house which is faced with brick. At the south end of the front elevation a two-story porch appears, the lower story remains enclosed as designed and the second floor, originally open, is now enclosed. The square entrance portico with brick piers and a gable roof supported by large brackets dominates the front elevation. In the angle formed by the porticos, a long roofless porch extends across the front elevation. This porch is outlined by a low brick wall with balusters of simple brick piers and cast stone coping. The north elevation is especially dramatic with what appears to be a narrow three-story projecting bay, capped by gable roof, containing the side entrance. Panels of stucco with half-timbering enrich the panels between the floors of windows; similar decorative effects appear on the two-story porch wing of the front elevation. The front door features a multi-paned window and multi-paned transom and sidelights. Windows of varying sizes and types appear in this house, the most typical are sash windows with ten-over-one-lights.

Statement of Significance

The Fox House at 1303 S. Olive is another ca. 1910 Theo Sanders residential design in the city of Pine Bluff. This Craftsman influenced house features a variety of textures and materials in the use of tile, stucco, brick and pseudo half-timbering. An asymmetrical arrangement of doors and windows offsets the unusually large size of the Fox House. The house is two-stories and covered by a tile hipped roof with flared overhanging eaves. The dominant feature of the front elevation is a large gable roof entrance portico. This porch is supported by brick piers and large brackets. Situated on a well landscaped corner lot in a quiet residential section of Pine Bluff, the Fox House is a dominant structure in its neighborhood.

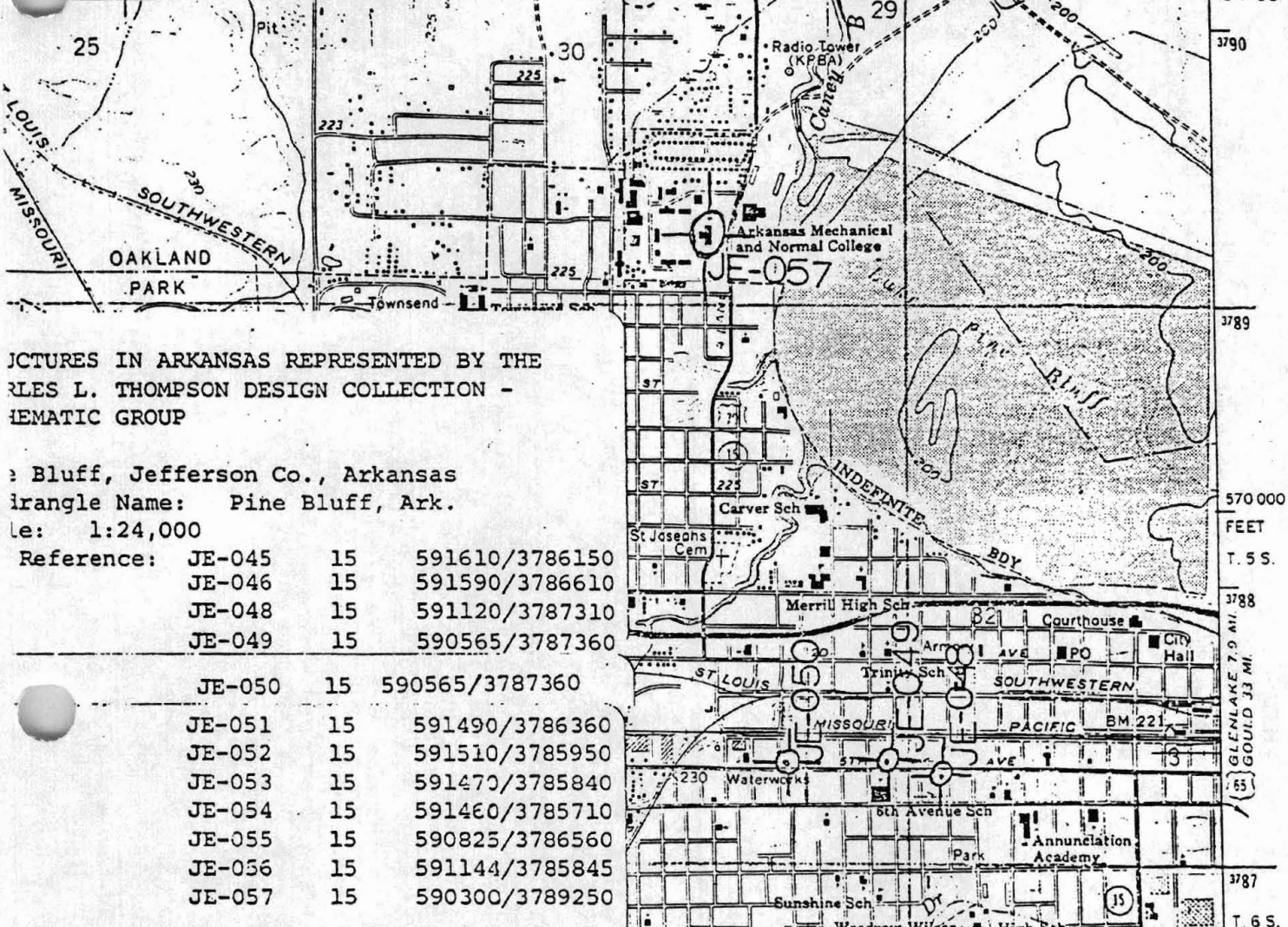




PINE BLUFF QUADRANGLE
 ARKANSAS—JEFFERSON CO.
 7.5 MINUTE SERIES (TOPOGRAPHIC)

7852 IV SW
 (ROB ROW)

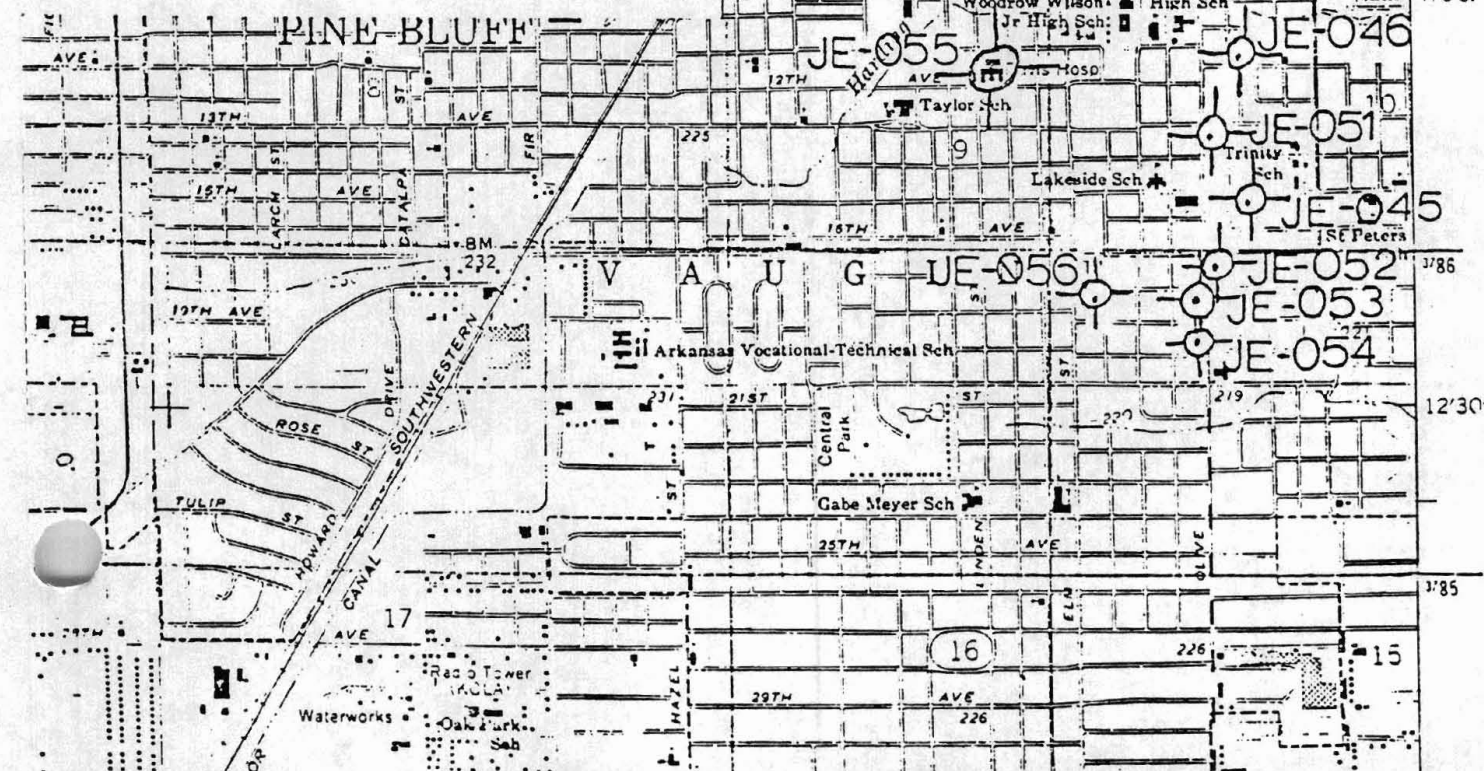
W. 2'30" 89 1 1990 000 FEET R. 9 W. 90 15 79 STUTTGART 35 MI. 5.2 MI. TO JUNQ. U.S. 79 AND ARK. 15 92°00' 34°15'



PICTURES IN ARKANSAS REPRESENTED BY THE
 RULES L. THOMPSON DESIGN COLLECTION -
 THEMATIC GROUP

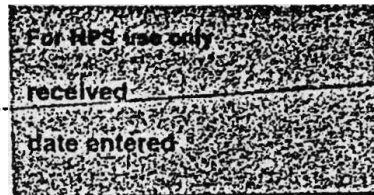
Pine Bluff, Jefferson Co., Arkansas
 Quadrangle Name: Pine Bluff, Ark.
 Scale: 1:24,000

Reference:	JE-045	15	591610/3786150
	JE-046	15	591590/3786610
	JE-048	15	591120/3787310
	JE-049	15	590565/3787360
	JE-050	15	590565/3787360
	JE-051	15	591490/3786360
	JE-052	15	591510/3785950
	JE-053	15	591470/3785840
	JE-054	15	591460/3785710
	JE-055	15	590825/3786560
	JE-056	15	591144/3785845
	JE-057	15	590300/3789250



United States Department of the Interior
National Park Service

National Register of Historic Places
Inventory—Nomination Form



Continuation sheet 176 Item number 1, 2, 4, 6 & 10 Page 1

INDIVIDUAL DATA SHEET

General Description

Code: JE-051

Congressional District: Fourth

Name: Fox House

Current Owner: Hendrix Arthur Taylor, Jr.

Address: 1303 South Olive
Pine Bluff, Arkansas

Address: 1303 South Olive
Pine Bluff, Arkansas

County: Jefferson

Architectural Information

Architectural Firm: Sanders

Date of Construction: ca. 1910

Stylistic Influence: Craftsman

Original Use: Residence

Present Use: Residence

Geographical Information

UTM Reference: 15 591490/3786360

Acreage: Less than one

Verbal Boundary Description: Dexter Harding Addition
Block 45, N. 148' exc. E. 75' of Blk. 45

Condition

Excellent
 Good
 Fair

Deteriorated
 Ruins
 Unexposed

Unaltered
 Altered

United States Department of the Interior
National Park Service

For NPS use only
Received
Date entered

National Register of Historic Places
Inventory—Nomination Form

Continuation sheet 177

Item number 7 & 8

Page 2

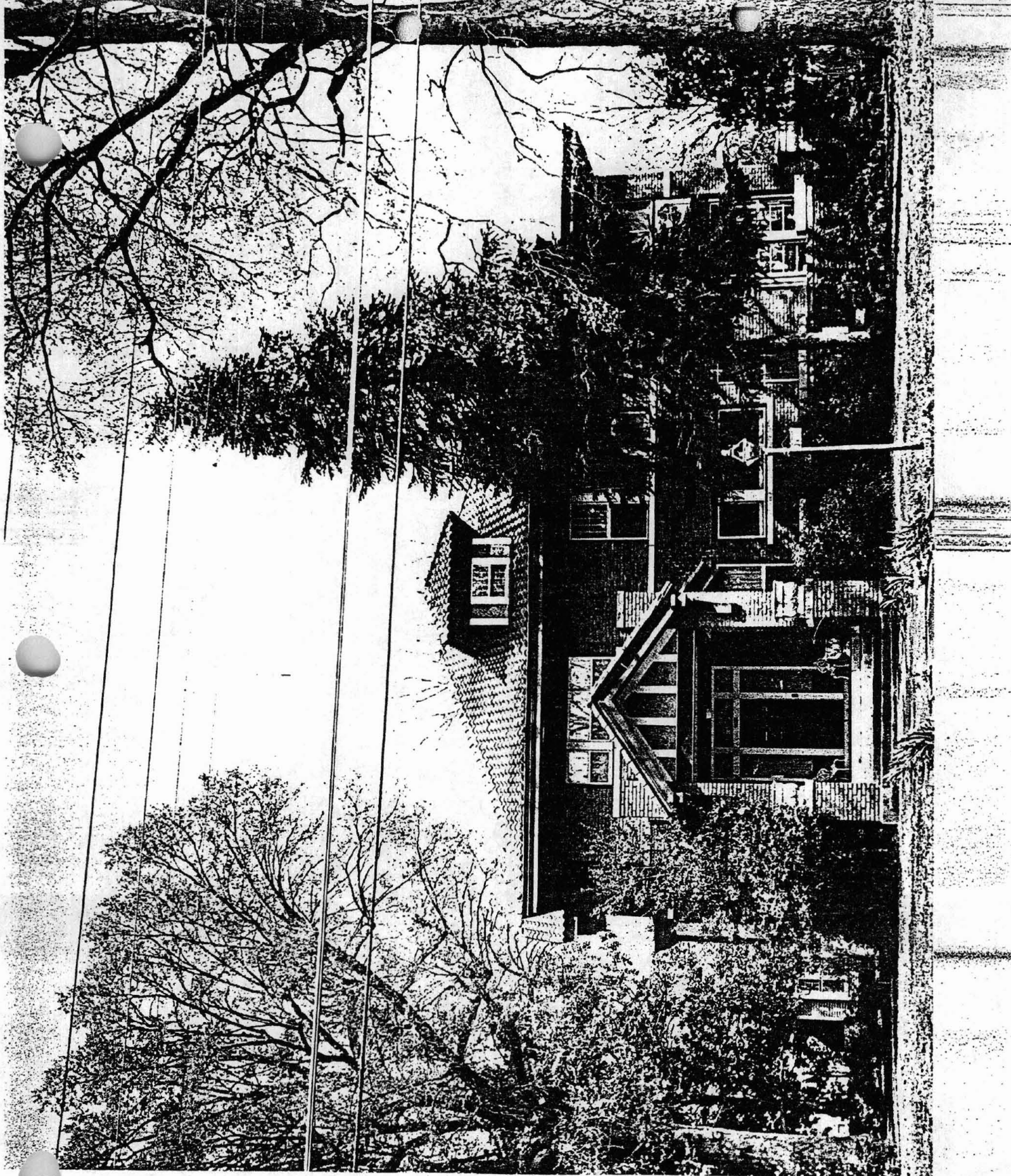
Code: JE-051 (1303 S. Olive, Pine Bluff, AR)

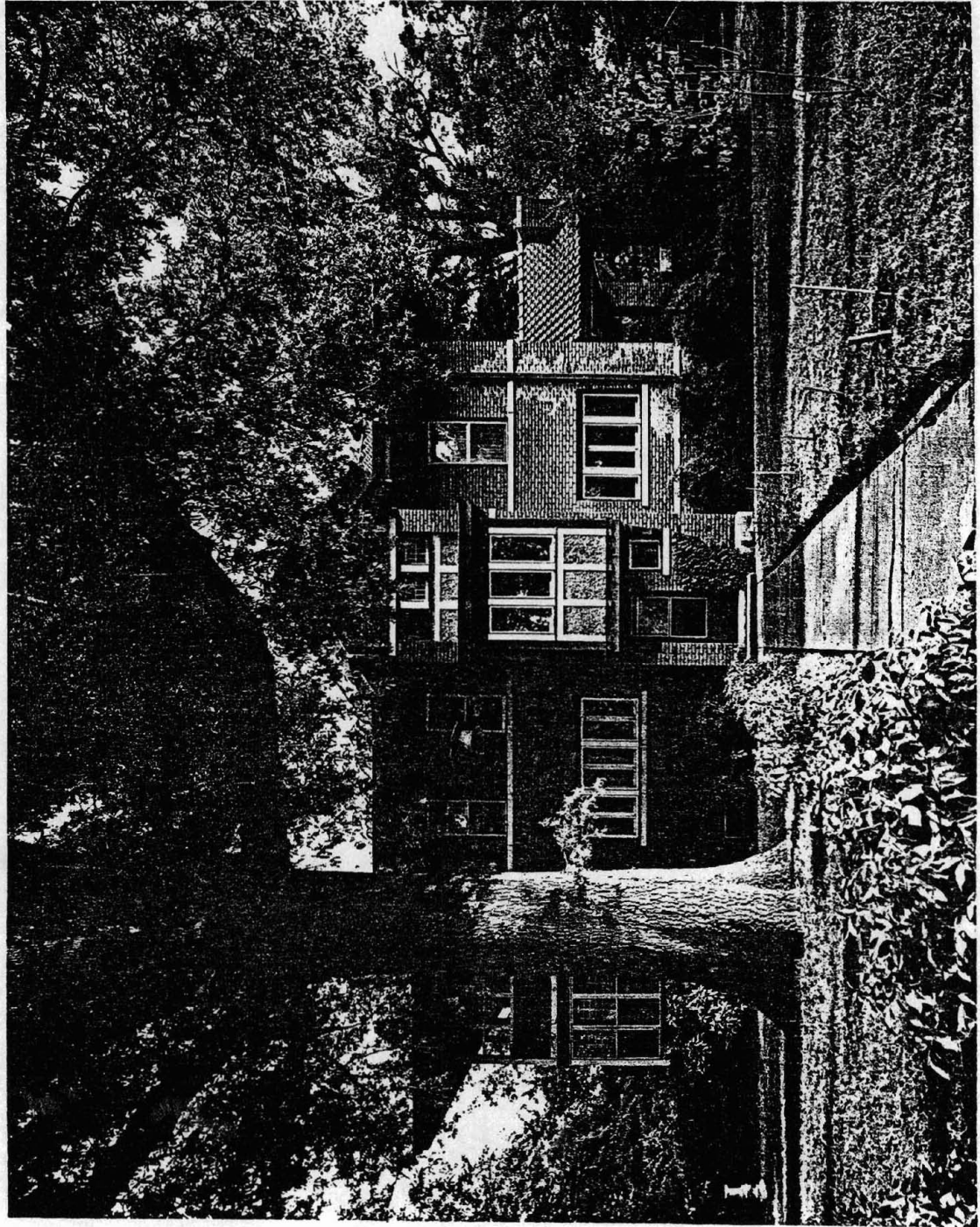
Physical Description

A variety of textures and materials, asymmetrical arrangement of certain elements and fenestration of differing sizes combine to create a rather lively effect which offsets to a degree the large size of this structure. The characteristic tile hipped roof with flared overhanging eaves caps the two-story house which is faced with brick. At the south end of the front elevation a two-story porch appears, the lower story remains enclosed as designed and the second floor, originally open, is now enclosed. The square entrance portico with brick piers and a gable roof supported by large brackets dominates the front elevation. In the angle formed by the porticos, a long roofless porch extends across the front elevation. This porch is outlined by a low brick wall with balusters of simple brick piers and cast stone coping. The north elevation is especially dramatic with what appears to be a narrow three-story projecting bay, capped by gable roof, containing the side entrance. Panels of stucco with half-timbering enrich the panels between the floors of windows; similar decorative effects appear on the two-story porch wing of the front elevation. The front door features a multi-paned window and multi-paned transom and sidelights. Windows of varying sizes and types appear in this house, the most typical are sash windows with ten-over-one-lights.

Statement of Significance

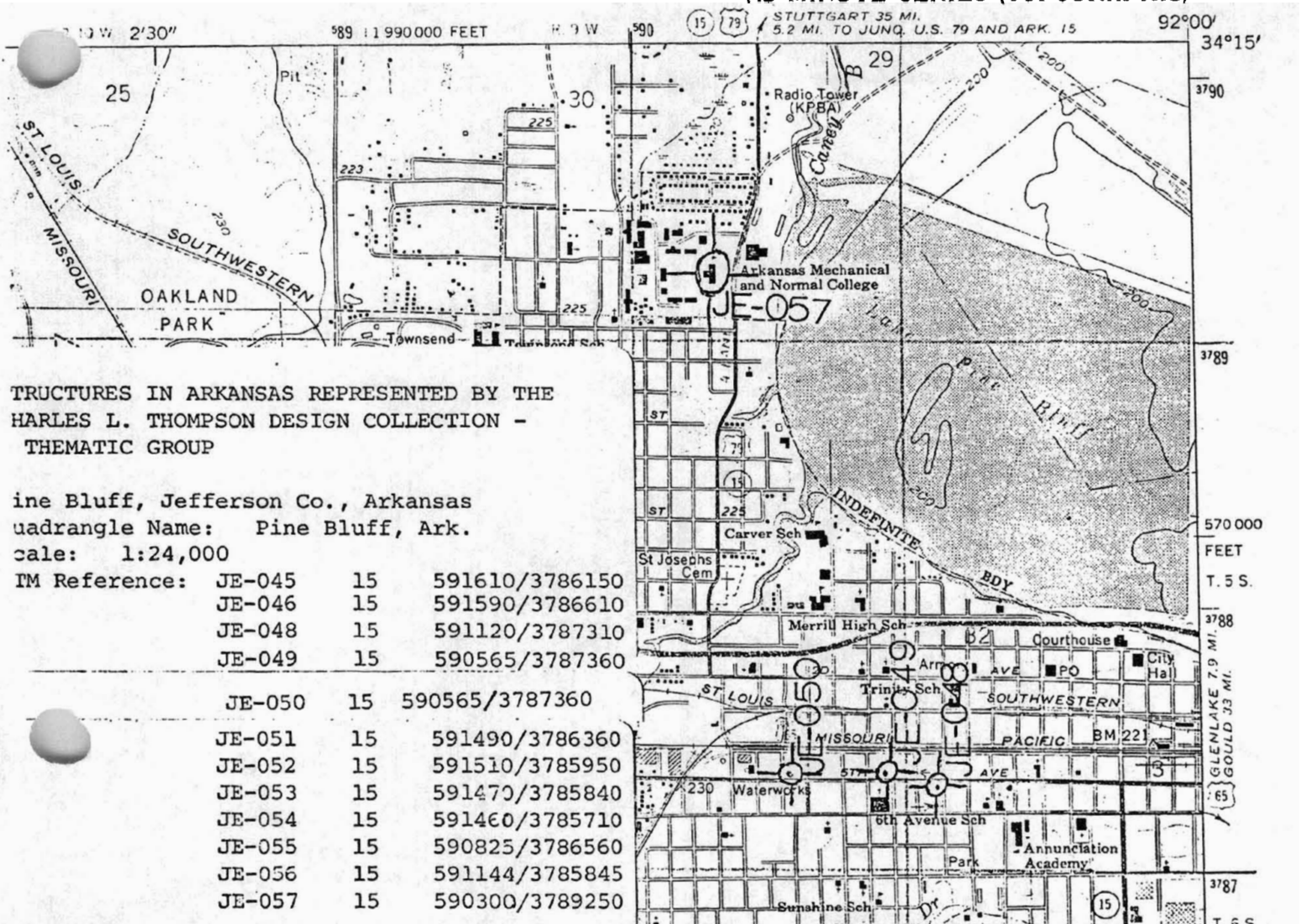
The Fox House at 1303 S. Olive is another ca. 1910 Theo Sanders residential design in the city of Pine Bluff. This Craftsman influenced house features a variety of textures and materials in the use of tile, stucco, brick and pseudo half-timbering. An asymmetrical arrangement of doors and windows offsets the unusually large size of the Fox House. The house is two-stories and covered by a tile hipped roof with flared overhanging eaves. The dominant feature of the front elevation is a large gable roof entrance portico. This porch is supported by brick piers and large brackets. Situated on a well landscaped corner lot in a quiet residential section of Pine Bluff, the Fox House is a dominant structure in its neighborhood.





PINE BLUFF QUADRANGLE
 ARKANSAS—JEFFERSON CO.
 7.5 MINUTE SERIES (TOPOGRAPHIC)

7652 IV SW
 (ROB ROY)



STRUCTURES IN ARKANSAS REPRESENTED BY THE
 HARLES L. THOMPSON DESIGN COLLECTION -
 THEMATIC GROUP

Pine Bluff, Jefferson Co., Arkansas
 Quadrangle Name: Pine Bluff, Ark.
 Scale: 1:24,000

UTM Reference:	JE-045	15	591610/3786150
	JE-046	15	591590/3786610
	JE-048	15	591120/3787310
	JE-049	15	590565/3787360
	JE-050	15	590565/3787360
	JE-051	15	591490/3786360
	JE-052	15	591510/3785950
	JE-053	15	591470/3785840
	JE-054	15	591460/3785710
	JE-055	15	590825/3786560
	JE-056	15	591144/3785845
	JE-057	15	590300/3789250

