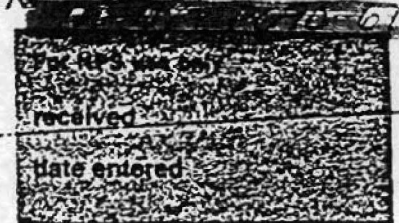


United States Department of the Interior
National Park Service

National Register of Historic Places
Inventory—Nomination Form

EXP 12/31/84



Continuation sheet 182

Item number 1, 2, 4, 6, & 10

Page 1

INDIVIDUAL DATA SHEET

General Description

Code: JE-054

Congressional District: Fourth

Name: Puddephatt House

Current Owner: Joe W. Clement, III

Address: 1820 South Olive
Pine Bluff, Arkansas

Address: 1820 South Olive
Pine Bluff, Arkansas

County: Jefferson

Architectural Information

Architectural Firm: Charles Thompson

Date of Construction: ca. 1911

Stylistic Influence: Craftsman

Original Use: Residence

Present Use: Residence

Geographical Information

UTM Reference: 15 591460/3785710

Acreage: Less than one

Verbal Boundary Description: M.J. Skull Addition
Block 8, Lots 9 & 12

Condition

Excellent
 Good
 Fair

Deteriorated
 Ruins
 Unexposed

Unaltered
 Altered

United States Department of the Interior
National Park Service

National Register of Historic Places
Inventory—Nomination Form

For NPS use only
received
date entered

Continuation sheet 183

Item number 7 & 8

Page 2

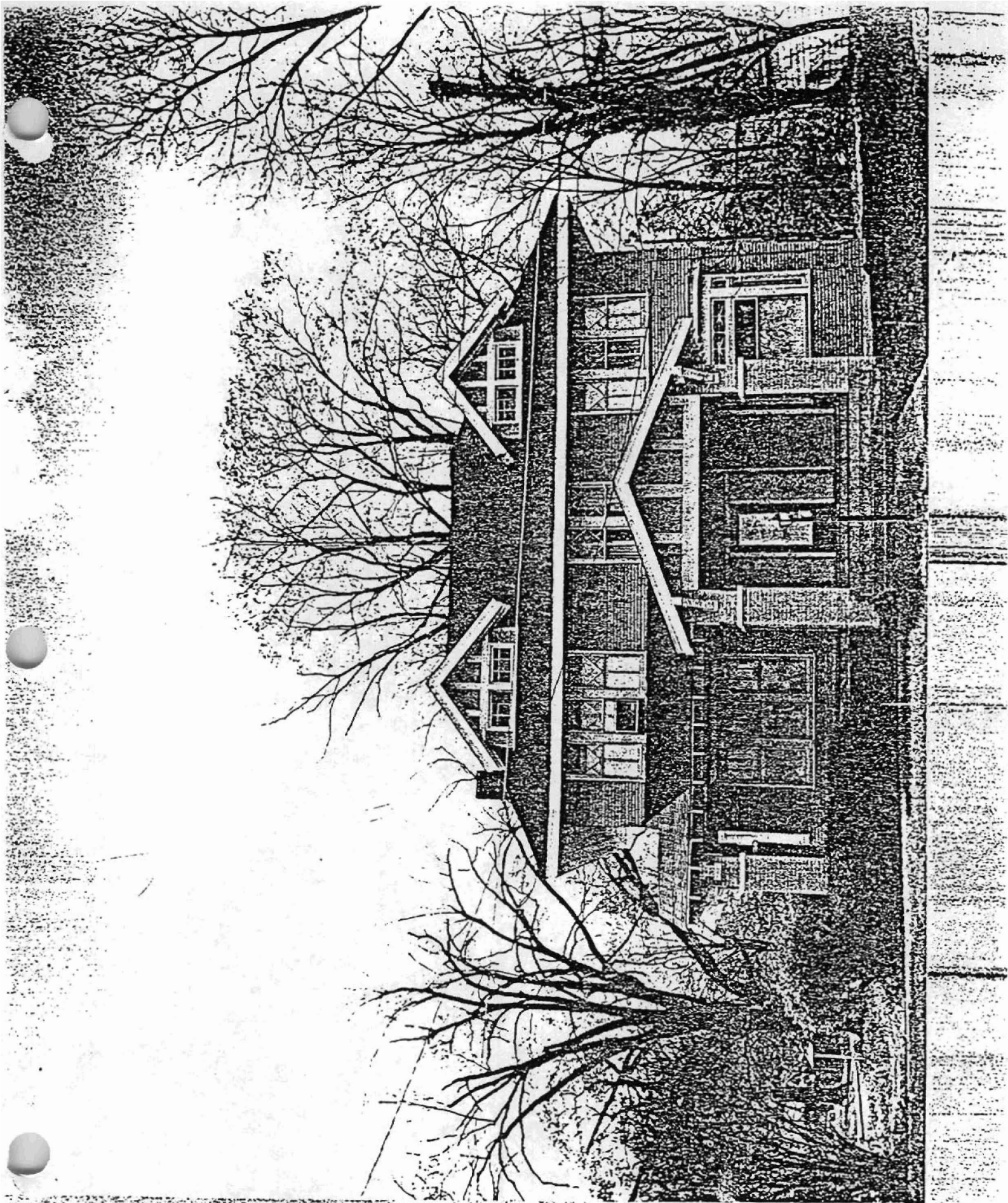
Code: JE-054 (1820 Olive, Pine Bluff, AR)

Physical Description

This two-story house echoes the simple boxy massing crowned by shallow hipped roof with overhanging eaves characteristic of the popular American Foursquare house. In this version however, the details are Craftsman influenced rather than Colonial Revival. The structure is faced with narrow weatherboards. Distinguishing the front elevation is the porch with broad triangular pediment infilled with pseudo half-timbering with brackets and supported by large brick piers. A shed roof extends from this pedimented portico across the south side of the front. Two widely spaced gable roofed dormers, also enriched with pseudo half-timbering, enliven the roofscape. A three-corner bay window with decorative transoms embellishes the front elevation to the north of the entrance portico. Other than a centrally located pair of windows on the second story, the sash windows lighting the interior are grouped in threes on the front elevation. All feature upper lights with muntins arranged in a decorative diamond shape while the lower panes are divided by a single vertical muntin.

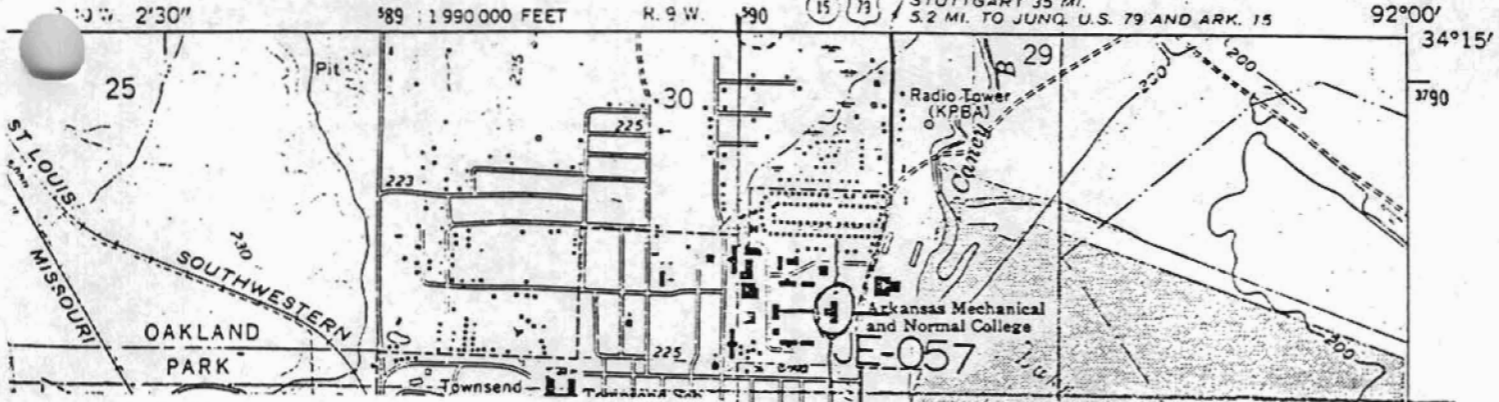
Statement of Significance

The Puddephatt House designed by Charles L. Thompson circa 1911 is an example of the firm's transitional work with Foursquare and Craftsman designs. Although basically Foursquare in massing, the verticality of the Foursquare is toned down by the application of Craftsman elements. The use of the unbroken roof line with its low overhanging eaves which is repeated by the roof line of the porch and the low pitch gable of the portico and dormers helps create a horizontality associated with the more up-to-date Prairie Style. Thompson continued this reinforcement by the horizontal grouping of the windows throughout the house. The Puddephatt House is an important component in the Thompson firm's transition from the traditional house plan to the more modern residence plan represented by the Craftsman and Prairie designs.



PINE BLUFF QUADRANGLE
 ARKANSAS—JEFFERSON CO.
 7.5 MINUTE SERIES (TOPOGRAPHIC)

7652 IV SW
 (ROB ROY)



STRUCTURES IN ARKANSAS REPRESENTED BY THE
 CHARLES L. THOMPSON DESIGN COLLECTION -
 THEMATIC GROUP

Pine Bluff, Jefferson Co., Arkansas
 Quadrangle Name: Pine Bluff, Ark.
 Scale: 1:24,000

4 Reference:	JE-045	15	591610/3786150
	JE-046	15	591590/3786610
	JE-048	15	591120/3787310
	JE-049	15	590565/3787360
	JE-050	15	590565/3787360
	JE-051	15	591490/3786360
	JE-052	15	591510/3785950
	JE-053	15	591470/3785840
	JE-054	15	591460/3785710
	JE-055	15	590825/3786560
	JE-056	15	591144/3785845
	JE-057	15	590300/3789250

