

United States Department of the Interior
National Park Service

EXP 12/31/84
1070-678
received
date entered

National Register of Historic Places
Inventory—Nomination Form

Continuation sheet 180 Item number 1,2,4,6, & 10 Page 1

INDIVIDUAL DATA SHEET

415

General Description

Code: JE-053

Congressional District: Fourth

Name: Howson House

Current Owner: Daniel C. McKinney

Address: 1700 South Olive
Pine Bluff, Arkansas

Address: 1700 South Olive
Pine Bluff, Arkansas

County: Jefferson

Architectural Information

Architectural Firm: Thompson and Harding

Date of Construction: 1918

Stylistic Influence: Craftsman/Tudor Revival

Original Use: Residence

Present Use: Residence

Geographical Information

UTM Reference: 15 591470/3785840

Acreage: Less than one

Verbal Boundary Description: M. J. Skull Addition
Block 1, Lot 1, 4, & N.35' of lot 5

Condition

Excellent
 Good
 Fair

Deteriorated
 Ruins
 Unexposed

Unaltered
 Altered



United States Department of the Interior
National Park Service

National Register of Historic Places
Inventory—Nomination Form

For MPS use only
received
date entered

Continuation sheet 181

Item number 7 & 8

Page 2

Code: JE-053 (1700 S. Olive, Pine Bluff, AR)

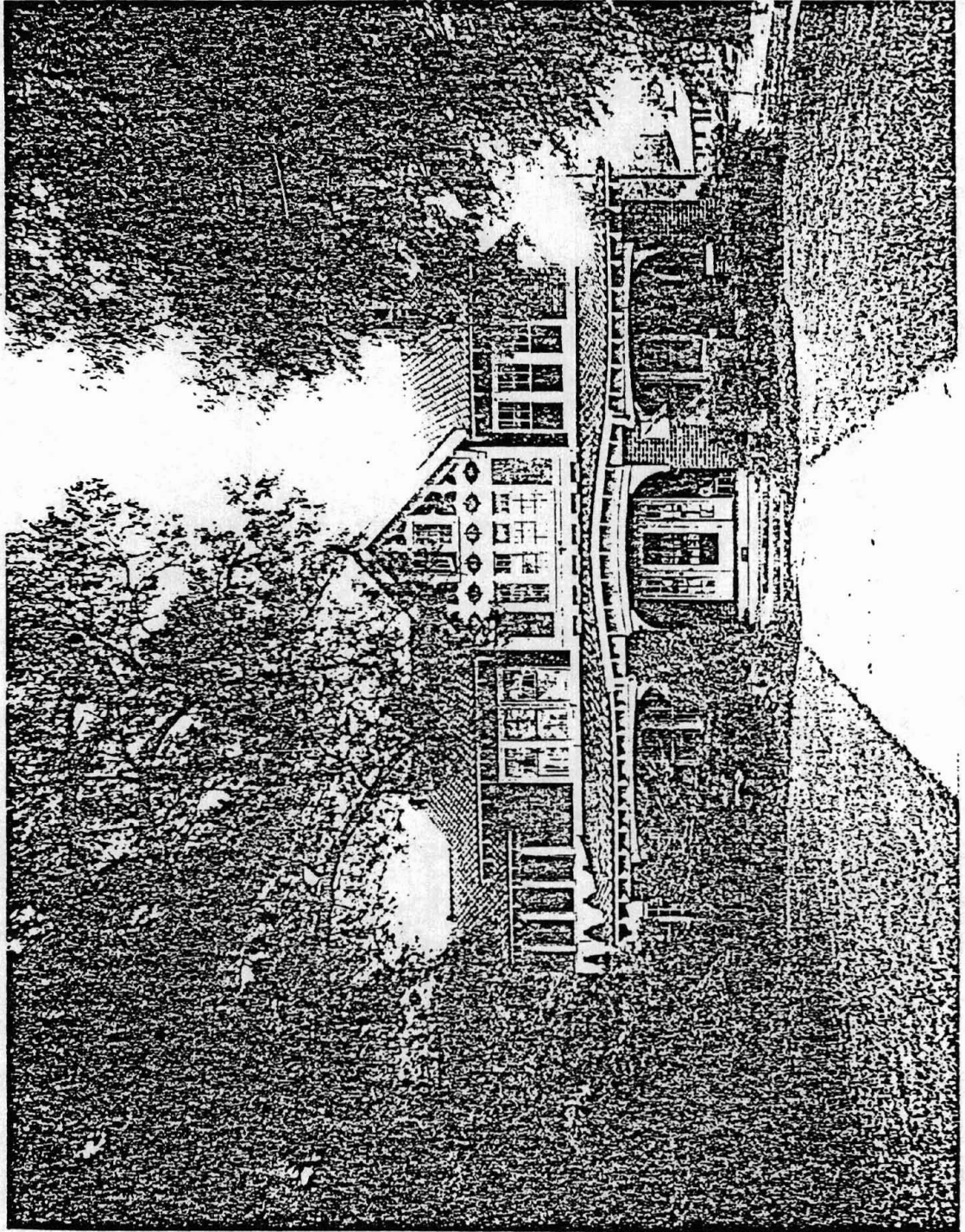
Physical Description

This large, two-story house is characterized by fine details and an attractive rustic, picturesque quality. The intricacy and variety of the textures, patterns and rhythmic elements of the facade are offset by the simplicity of the massing and thus saved from lapsing into quaintness. The massing consists of the principal rectangular block, capped by a tile gable end roof, a projecting central cross gable and a recessed wing on the south. A wide, full-length front porch with shed roof accentuated by exposed rafters, adds horizontality and unity to the whole. The main block is faced with brick while the entire second story of the recessed wing and the cross gable are enlivened by stucco panels and pseudo half-timbering featuring decorative cut-out shapes. Adding further pattern to the cross gable are two multi-paned casement windows at attic level and a bank of four multi-paned sash windows below. The slight curve of the central portion of the porch roof is echoed in the large curved brackets which frame the porch entrance and each brick porch pier. The front door has a full-length multi-paned window and is flanked by multi-paned sidelights. The sash windows have six-over-one lights.

Statement of Significance

The Howson House was designed by the Thompson and Harding firm in 1918. Located at a busy intersection in Pine Bluff, the house is a picturesque combination of Craftsman and Tudor Revival styling. The design of the house is notable in its free and exuberant handling of textures and materials. The picturesque quality of the Howson House design is underlined by the lack of "quaint" features such as Jacobean chimneys or pseudo-thatched roofs. Although the firm designed many similarly styled houses few are of such a grand scale. The house displays by way of its symmetry an unusual formality for a Craftsman/Tudor Revival house. This house bears a resemblance to Theo Sanders' 1917 design for the Cornish House in Little Rock (PU-144). Despite the variety and intricacy of detailing found on the Howson House, it retains the character of an imposing large scale design with a measurable attention to unity.

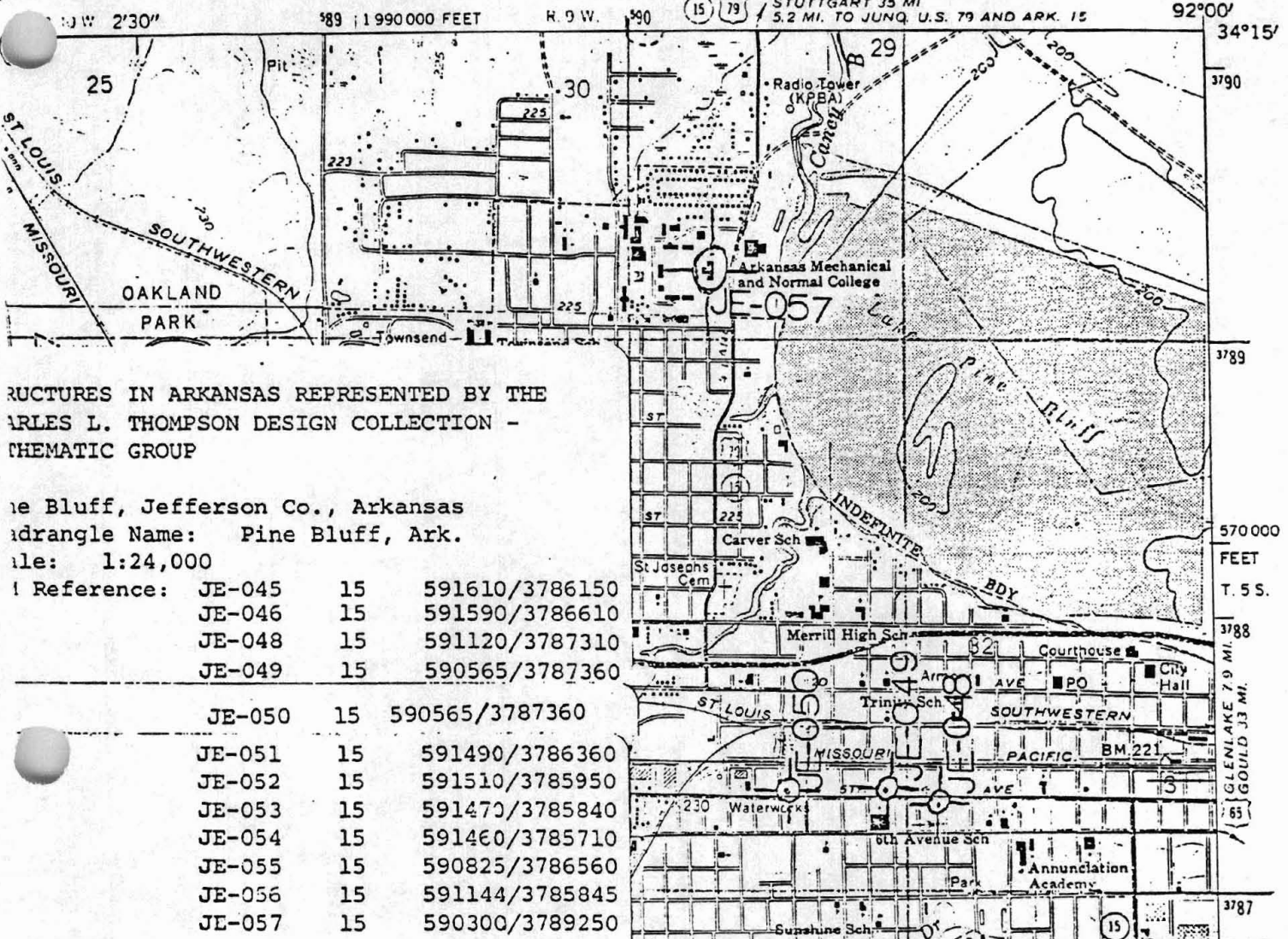






PINE BLUFF QUADRANGLE
 ARKANSAS—JEFFERSON CO.
 7.5 MINUTE SERIES (TOPOGRAPHIC)

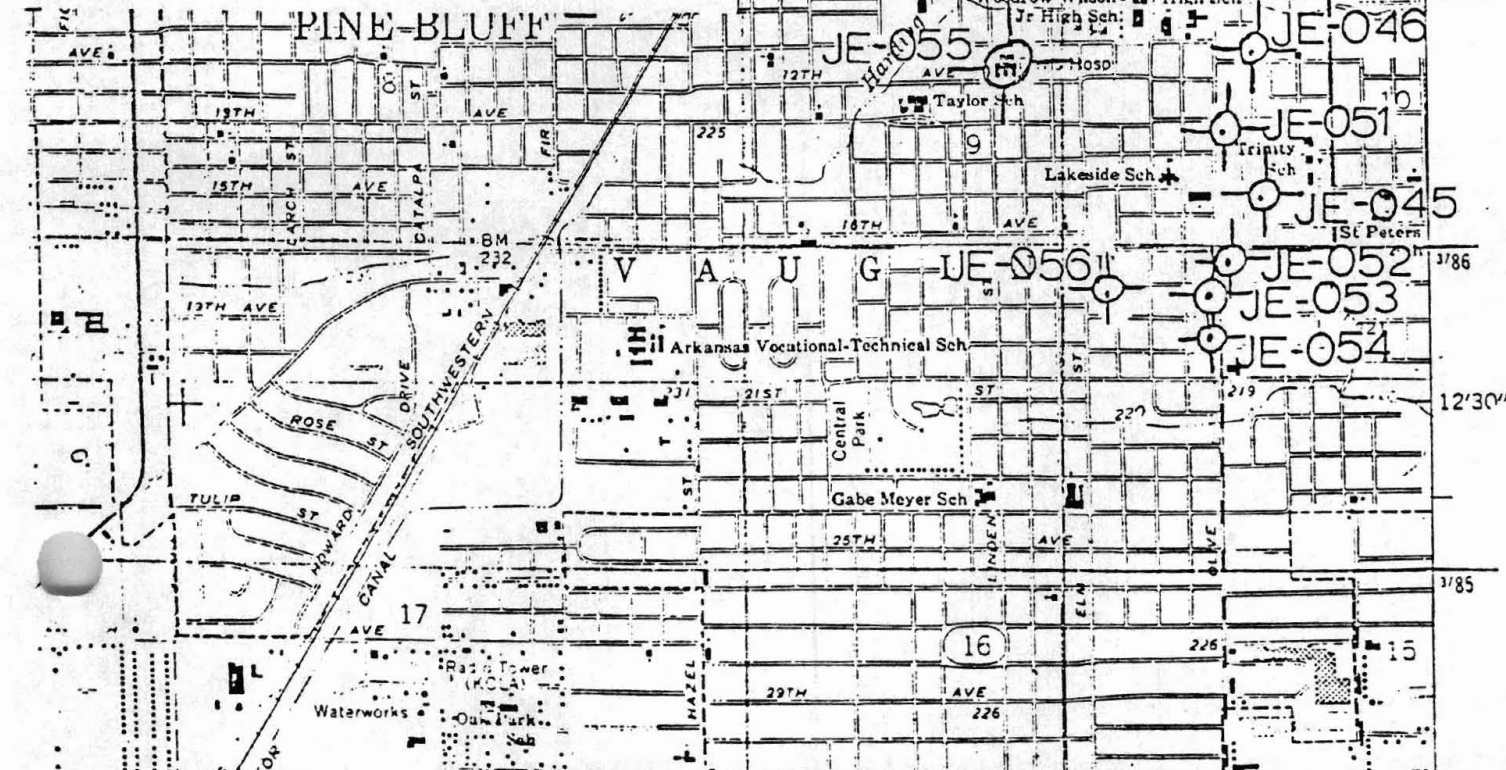
7652 IV SW
 (ROB ROY)



STRUCTURES IN ARKANSAS REPRESENTED BY THE
 CHARLES L. THOMPSON DESIGN COLLECTION -
 THEMATIC GROUP

Pine Bluff, Jefferson Co., Arkansas
 Quadrangle Name: Pine Bluff, Ark.
 Scale: 1:24,000

Reference:	JE-045	15	591610/3786150
	JE-046	15	591590/3786610
	JE-048	15	591120/3787310
	JE-049	15	590565/3787360
	JE-050	15	590565/3787360
	JE-051	15	591490/3786360
	JE-052	15	591510/3785950
	JE-053	15	591470/3785840
	JE-054	15	591460/3785710
	JE-055	15	590825/3786560
	JE-056	15	591144/3785845
	JE-057	15	590300/3789250

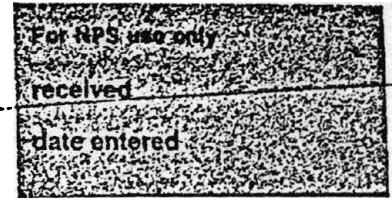




EX. 12/31/84.

United States Department of the Interior
National Park Service

National Register of Historic Places
Inventory—Nomination Form



Continuation sheet 180

Item number 1,2,4,6, & 10

Page 1

INDIVIDUAL DATA SHEET

General Description

Code: JE-053

Congressional District: Fourth

Name: Howson House

Current Owner: Daniel C. McKinney

Address: 1700 South Olive
Pine Bluff, Arkansas

Address: 1700 South Olive
Pine Bluff, Arkansas

County: Jefferson

Architectural Information

Architectural Firm: Thompson and Harding

Date of Construction: 1918

Stylistic Influence: Craftsman/Tudor Revival

Original Use: Residence

Present Use: Residence

Geographical Information

UTM Reference: 15 591470/3785840

Acreage: Less than one

Verbal Boundary Description: M. J. Skull Addition
Block 1, Lot 1, 4, & N.35' of lot 5

Condition

Excellent
 Good
 Fair

Deteriorated
 Ruins
 Unexposed

Unaltered
 Altered



United States Department of the Interior
National Park Service

National Register of Historic Places Inventory—Nomination Form

For MPS use only
received
date entered

Continuation sheet 181

Item number 7 & 8

Page 2

Code: JE-053 (1700 S. Olive, Pine Bluff, AR)

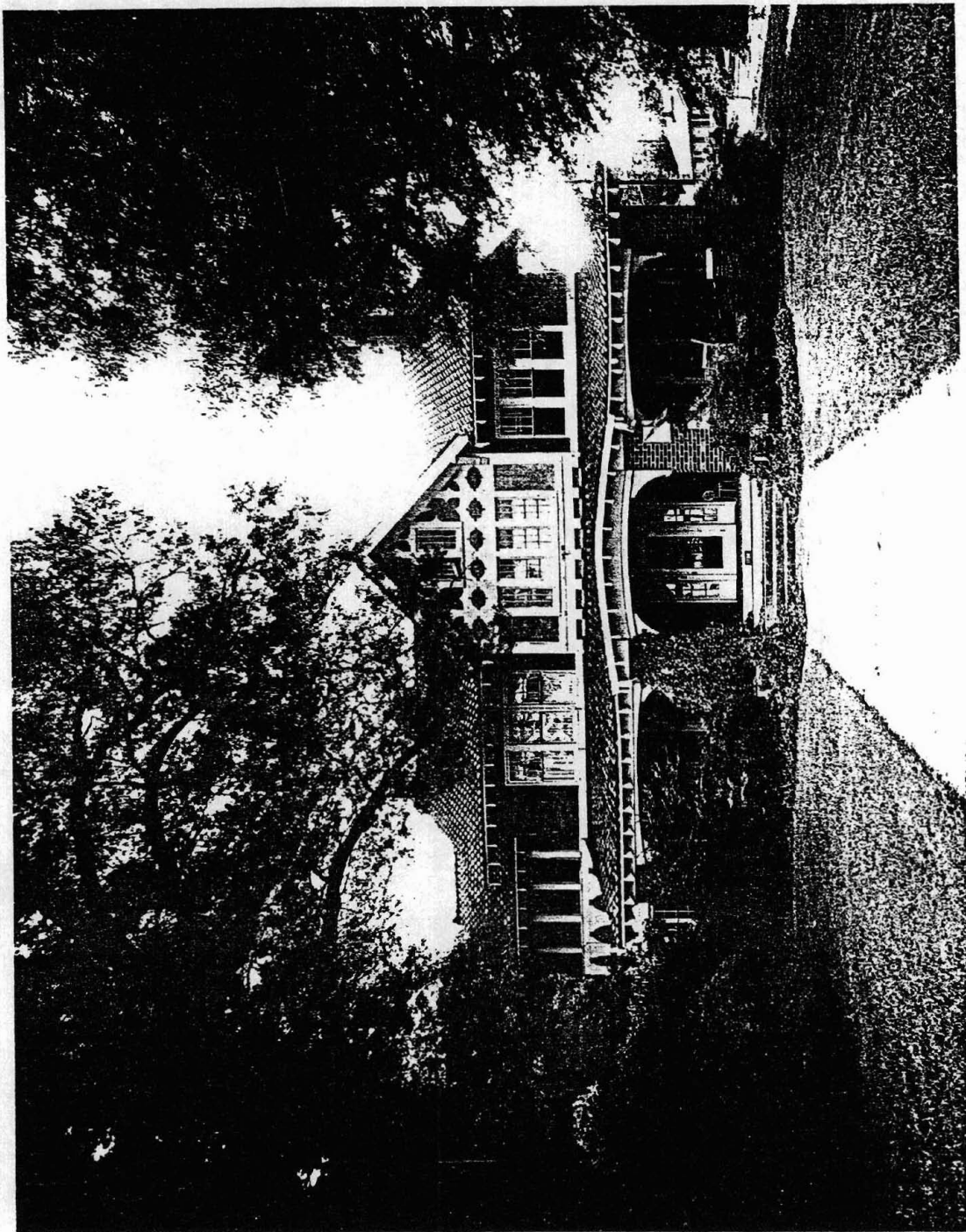
Physical Description

This large, two-story house is characterized by fine details and an attractive rustic, picturesque quality. The intricacy and variety of the textures, patterns and rhythmic elements of the facade are offset by the simplicity of the massing and thus saved from lapsing into quaintness. The massing consists of the principal rectangular block, capped by a tile gable end roof, a projecting central cross gable and a recessed wing on the south. A wide, full-length front porch with shed roof accentuated by exposed rafters, adds horizontality and unity to the whole. The main block is faced with brick while the entire second story of the recessed wing and the cross gable are enlivened by stucco panels and pseudo half-timbering featuring decorative cut-out shapes. Adding further pattern to the cross gable are two multi-paned casement windows at attic level and a bank of four multi-paned sash windows below. The slight curve of the central portion of the porch roof is echoed in the large curved brackets which frame the porch entrance and each brick porch pier. The front door has a full-length multi-paned window and is flanked by multi-paned sidelights. The sash windows have six-over-one lights.

Statement of Significance

The Howson House was designed by the Thompson and Harding firm in 1918. Located at a busy intersection in Pine Bluff, the house is a picturesque combination of Craftsman and Tudor Revival styling. The design of the house is notable in its free and exuberant handling of textures and materials. The picturesque quality of the Howson House design is underlined by the lack of "quaint" features such as Jacobean chimneys or pseudo-thatched roofs. Although the firm designed many similarly styled houses few are of such a grand scale. The house displays by way of its symmetry an unusual formality for a Craftsman/Tudor Revival house. This house bears a resemblance to Theo Sanders' 1917 design for the Cornish House in Little Rock (PU-144). Despite the variety and intricacy of detailing found on the Howson House, it retains the character of an imposing large scale design with a measurable attention to unity.





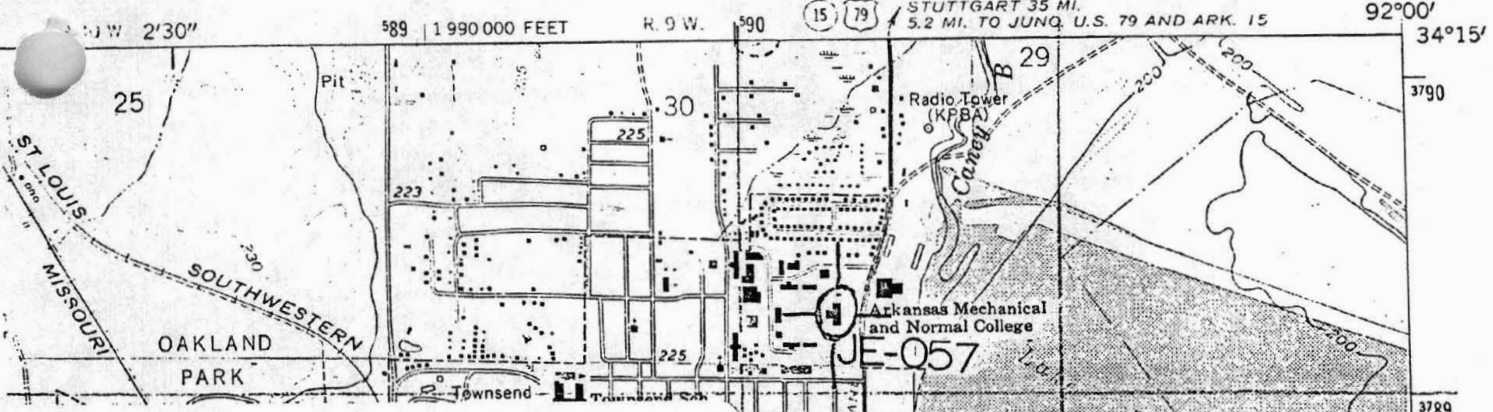
STRUCTURES IN ARKANSAS REPRESENTED BY THE
CHARLES L. THOMPSON DESIGN COLLECTION -
A THEMATIC GROUP

Code Number: JE-053 (Howson House)
1700 S. Olive, Pine Bluff, Arkansas

Photographed by: Sandra Taylor Smith
March, 1982
Negative on file at AHPP
Viewed from the West

PINE BLUFF QUADRANGLE
 ARKANSAS—JEFFERSON CO.
 7.5 MINUTE SERIES (TOPOGRAPHIC)

7652 N SW
 (ROB ROY)



STRUCTURES IN ARKANSAS REPRESENTED BY THE
 HARLES L. THOMPSON DESIGN COLLECTION -
 THEMATIC GROUP

Pine Bluff, Jefferson Co., Arkansas
 Quadrangle Name: Pine Bluff, Ark.
 Scale: 1:24,000

TM Reference:	JE-045	15	591610/3786150
	JE-046	15	591590/3786610
	JE-048	15	591120/3787310
	JE-049	15	590565/3787360
	JE-050	15	590565/3787360
	JE-051	15	591490/3786360
	JE-052	15	591510/3785950
	JE-053	15	591470/3785840
	JE-054	15	591460/3785710
	JE-055	15	590825/3786560
	JE-056	15	591144/3785845
	JE-057	15	590300/3789250

