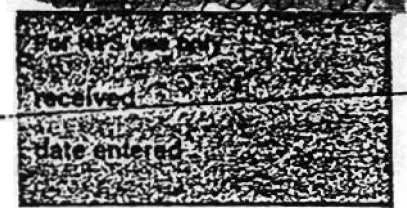


United States Department of the Interior
National Park Service

EXP. 12/31/84



**National Register of Historic Places
Inventory—Nomination Form**

Continuation sheet 184

Item number 1,2,4,6, & 10

INDIVIDUAL DATA SHEET

General Description

Code: JE-056

Congressional District: Fourth

Name: Temple House

Current Owner: Roy A. Scoggins

Address: 1702 South Oak
Pine Bluff, Arkansas

Address: 1702 South Oak
Pine Bluff, Arkansas

County: Jefferson

Architectural Information

Architectural Firm: Sanders

Date of Construction: ca. 1910

Stylistic Influence: Prairie Style

Original Use: Residence

Present Use: Residence

Geographical Information

UTM Reference: 15 591144/3785845

Acreage: Less than one

Verbal Boundary Description: M. J. Skull Addition
Block 4, Lots 1, 4, 5, & N 1/2 lot 8

Condition

Excellent
 Good
 Fair

Deteriorated
 Ruins
 Unexposed

Unaltered
 Altered

United States Department of the Interior
National Park Service

National Register of Historic Places Inventory—Nomination Form

For NPS use only
received
date entered

Continuation sheet 185

Item number 7 & 8

Page 2

Code: JE-056

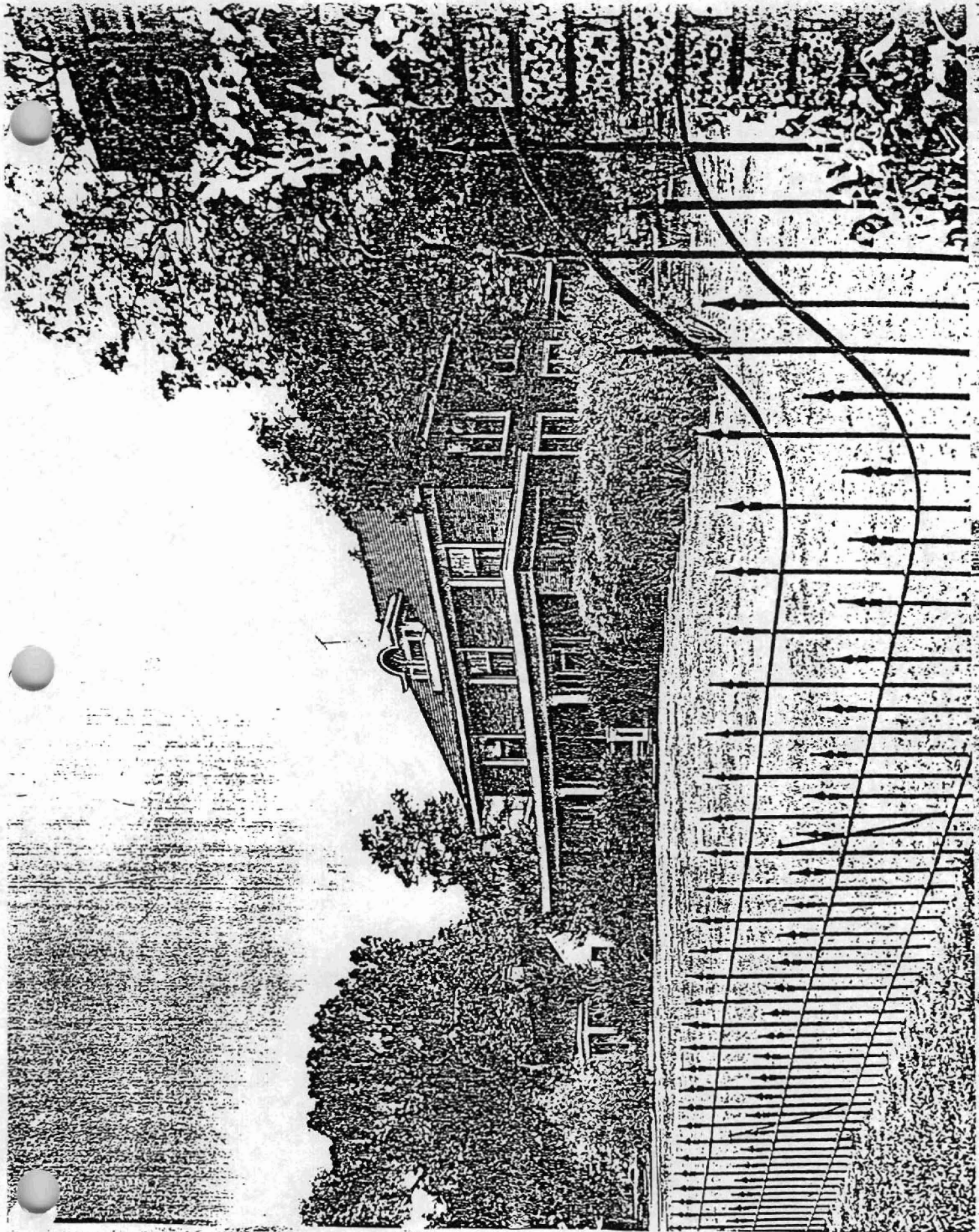
(1702 S. Oak, Pine Bluff, AR.)

Physical Description

In viewing this house, immediate associations with Frank Lloyd Wright's earliest Prairie Style houses are evident in the striking symmetrical simplicity and the long, unbroken horizontal lines. Elongated so as to accent the horizontality, this two-story, three-bay house, faced with brown brick, has a predictably shallow hipped tile roof with widely overhanging eaves. The long, clean horizontal line of the porch is extended as far as possible, covering a porte-cochere on the south and accentuating the horizontal orientation. The wide, smooth green lawn surrounding the house and even a fence at the road augment the sensation of flowing horizontality. Decorative details are few. Most notably, a dormer window with curved shed roof and three small multi-paned windows enlivens the front elevation. At its outer edges the porch is supported by wide brick piers and enclosed by a low brick wall with cast stone coping. Flanking the entrance are two simple box columns. The door features beveled plate glass and side lights. The wide sash windows have one-over-one lights.

Statement of Significance

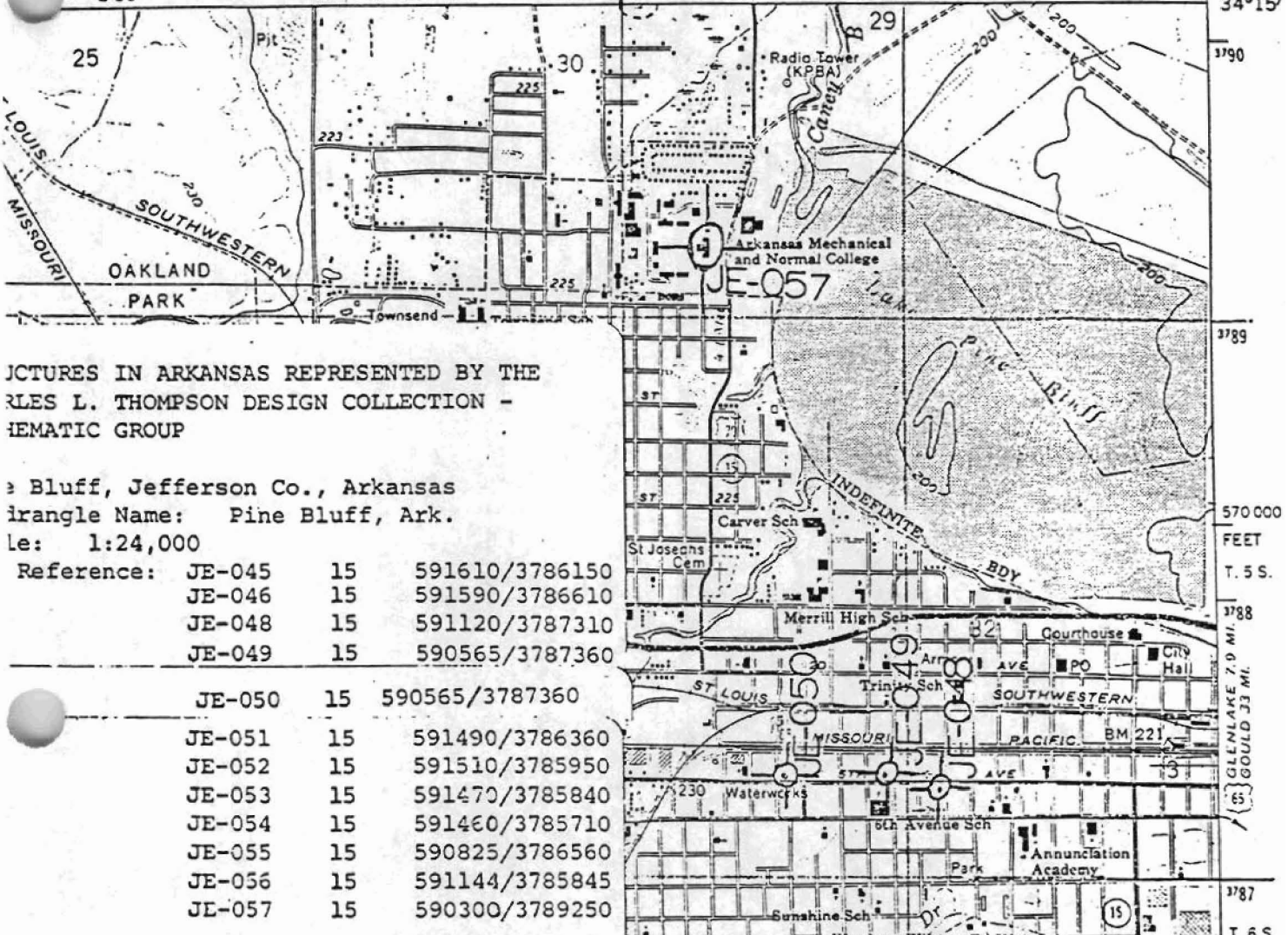
The Temple House at 1702 South Oak in Pine Bluff was designed by Theo Sanders ca. 1910. The flowing horizontal emphasis combined with a symmetrical simplicity lends a strong Prairie Style influence to this house. In addition to the shallow hipped tile roof with wide overhanging eaves, the horizontality of the Temple House continues in the wide porch which extends across the entire facade, covering a porte-cochere on the south elevation. This house echoes the long, clean lines of Frank Lloyd Wright's early Chicago houses and represents one of the most vividly Prairie Style-influenced houses in the collection.



PINE BLUFF QUADRANGLE
 ARKANSAS—JEFFERSON CO.
 7.5 MINUTE SERIES (TOPOGRAPHIC)

1652 W 5W
 (ROB ROV)

W 2'30" 589 1 990 000 FEET R. 9 W. 90 15 79 STUTTGART 35 MI. 5.2 MI. TO JUNG. U.S. 79 AND ARK. 15 92°00' 34°15'



PICTURES IN ARKANSAS REPRESENTED BY THE
 RLES L. THOMPSON DESIGN COLLECTION -
 HEMATIC GROUP

Bluff, Jefferson Co., Arkansas
 Quadrangle Name: Pine Bluff, Ark.
 Scale: 1:24,000

Reference:	JE-045	15	591610/3786150
	JE-046	15	591590/3786610
	JE-048	15	591120/3787310
	JE-049	15	590565/3787360
	JE-050	15	590565/3787360
	JE-051	15	591490/3786360
	JE-052	15	591510/3785950
	JE-053	15	591470/3785840
	JE-054	15	591460/3785710
	JE-055	15	590825/3786560
	JE-056	15	591144/3785845
	JE-057	15	590300/3789250

