

*Jackson Co.  
Newport  
Junior and Senior High School*

United States Department of the Interior  
National Park Service

# National Register of Historic Places Inventory—Nomination Form

For NPS use only
received
date entered

Continuation sheet 100 Item number 1,2,4,6, & 10 Page 1

## INDIVIDUAL DATA SHEET

### General Description

Code: JA-041 Congressional District: first  
 Name: Junior & Senior High School Current Owner: Newport School Board  
 Address: Rammel Park Address: Rammel Park  
 Newport, Arkansas Newport, Arkansas 72112  
 County: Jackson

### Architectural Information

Architectural Firm: Thompson, Sanders and Ginocchio  
 Date of Construction: 1930 Stylistic Influence: Art Deco  
 Original Use: School Present Use: School

### Geographical Information

UTM Reference: 15 656480/3940860 Acreage: Less than one  
 Verbal Boundary Description: part Npt NE SE  
 11-11-3

The boundaries of the nominated property extend 50 feet from the north, south and west exterior walls of the building and 25 feet from the east wall.

### Condition

Excellent  
 Good  
 Fair

Deteriorated  
 Ruins  
 Unexposed

Unaltered  
 Altered

United States Department of the Interior  
National Park Service

# National Register of Historic Places Inventory—Nomination Form

For NPS Use Only
RECEIVED
Date entered

Continuation sheet

101

Item number 7 & 8

Page 2

Code: JA-041

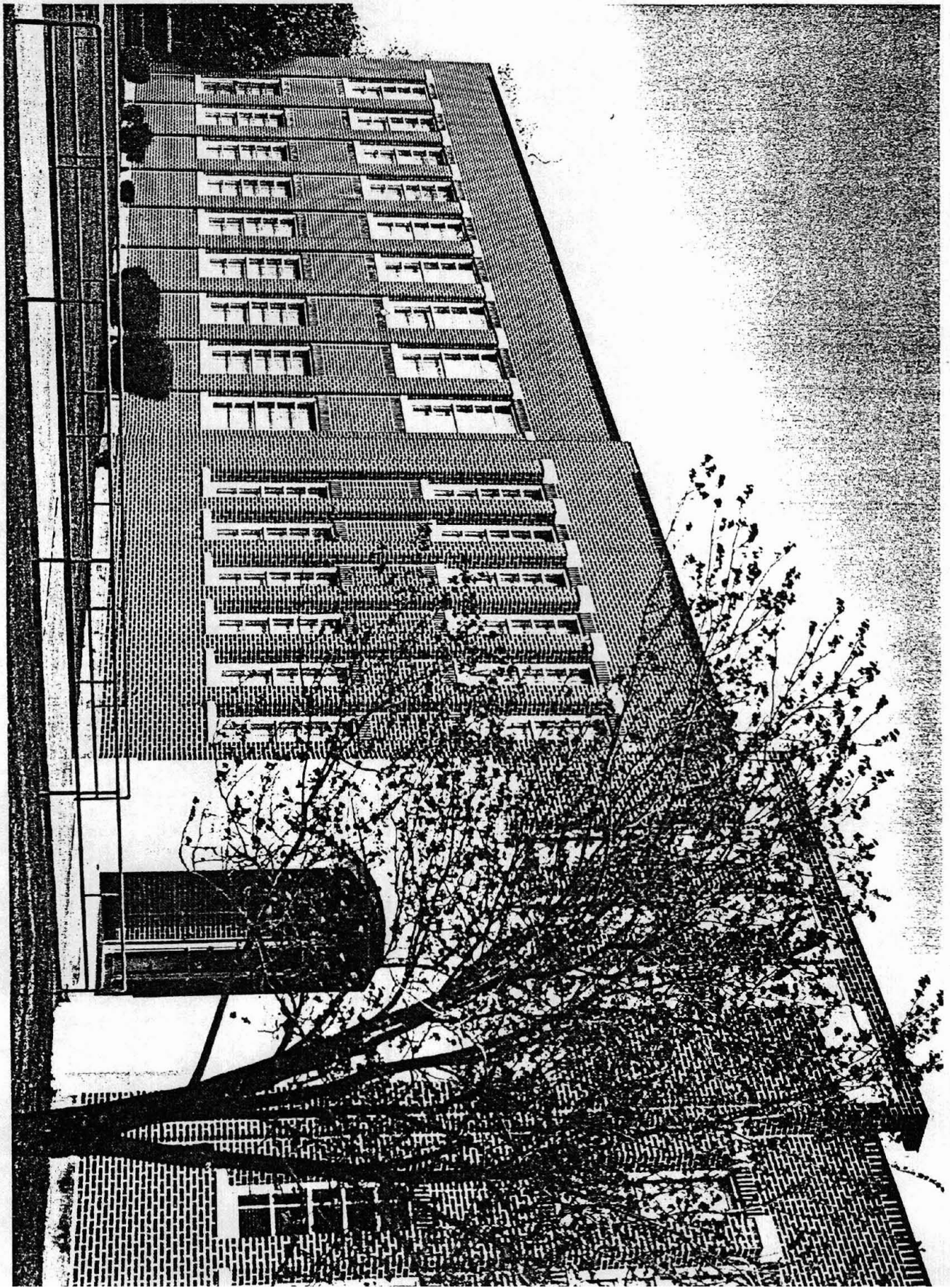
(Rommel Park, Newport, AR)

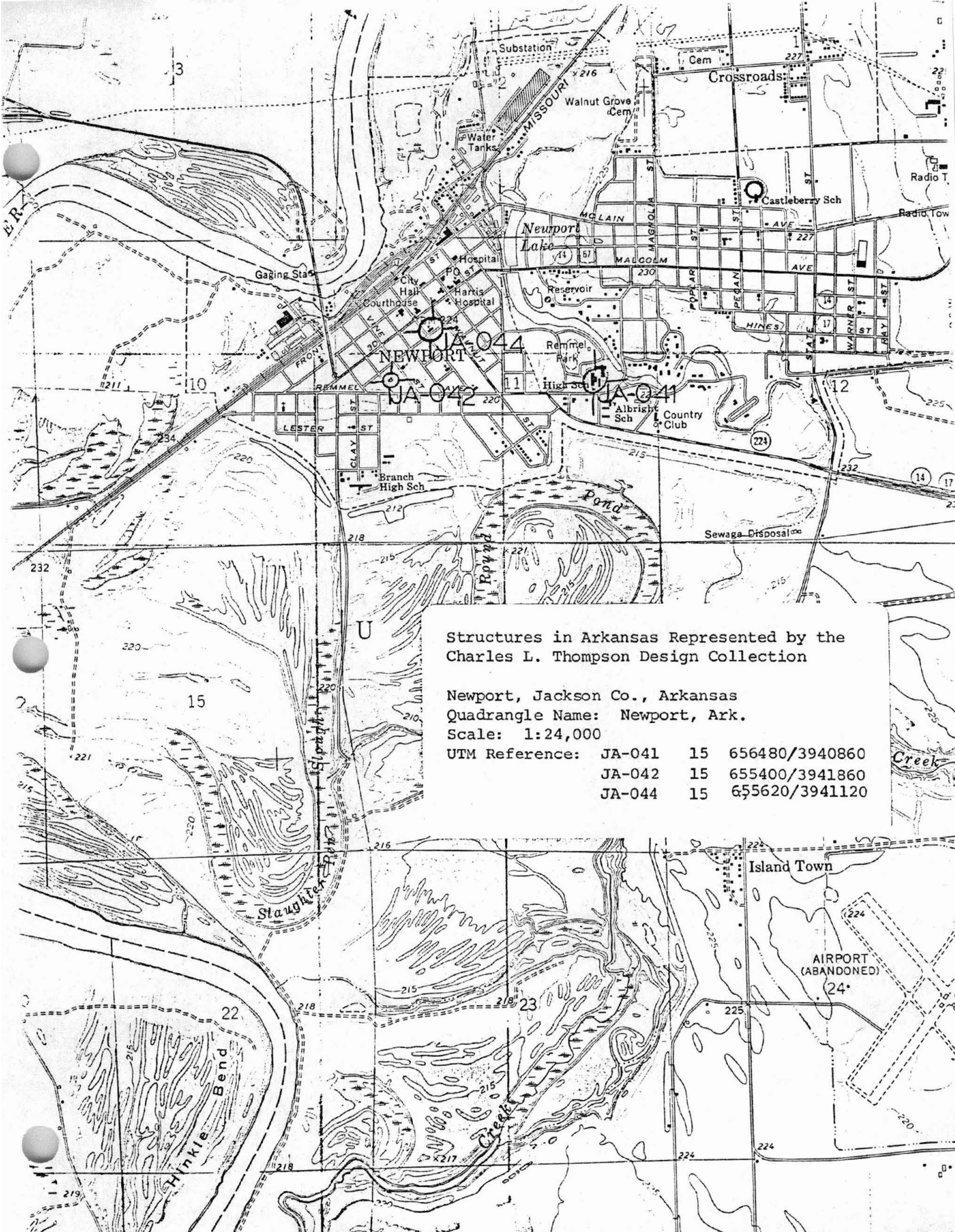
## Physical Description

This exceptionally long, rectangular structure exhibits a strong Art Deco influence. The two-story school, faced with red brick, has a flat roof and is set on a low cast stone foundation. The massing is composed of three blocks: a projecting central block, and two flanking ones. The entire facade is organized into bays with single windows articulated by long, slender brick piers terminating in simple stone blocks. These stone blocks and the stone sills beneath each window create strong and colorful horizontal rhythms which counteract the verticality of the brick piers. The blocks are differentiated through the use of smaller, narrow windows on the central block. The entrance is marked by a projecting cast stone segmental arch opening framed by slender vertical panels with pointed corners in stylized geometric motifs. Marking the entrance at parapet level are a series of rectangular stone panels carved with stylized geometric motifs.

## Statement of Significance

In 1930 the firm of Thompson, Sanders, and Ginocchio designed the Newport Junior and Senior High School Building. Constructed that same year, the building is one of the few Art Deco-influenced designs in the nomination based on the firm's drawing collection. The Newport School displays the "streamlined modern" concept in architecture at the time. This school is unique to the nominated structures in its variation from the historical details which characterized many of the firm's large buildings. The Newport School is a two-story red brick building which features the traits of Art Deco design in its straight geometric lines. The long rectangular building is marked by a projecting entrance of cast stone. This arched entrance features slender vertical panels with geometric motifs. Located in a complex of Newport public school buildings in a park setting, the Newport Junior and Senior High School is an important historic structure to the northeastern Arkansas city.





Structures in Arkansas Represented by the  
Charles L. Thompson Design Collection

Newport, Jackson Co., Arkansas

Quadrangle Name: Newport, Ark.

Scale: 1:24,000

UTM Reference:	JA-041	15	656480/3940860
	JA-042	15	655400/3941860
	JA-044	15	655620/3941120

Island Town

AIRPORT  
(ABANDONED)

24

United States Department of the Interior  
National Park Service

EXP. 12/31/84

National Register of Historic Places  
Inventory—Nomination Form



Continuation sheet 100 Item number 1,2,4,6, & 10 Page 1

INDIVIDUAL DATA SHEET

General Description

Code: JA-041 Congressional District: First  
Name: Junior & Senior High School Current Owner: Newport School Board  
Address: Rammel Park Newport, Arkansas Address: Rammel Park  
County: Jackson Newport, Arkansas 72112

Architectural Information

Architectural Firm: Thompson, Sanders and Ginocchio  
Date of Construction: 1930 Stylistic Influence: Art Deco  
Original Use: School Present Use: School

Geographical Information

UTM Reference: 15 656480/3940860 Acreage: Less than one

Verbal Boundary Description: part Npt NE SE  
11-11-3

The boundaries of the nominated property extend 50 feet from the north, south and west exterior walls of the building and 25 feet from the east wall.

Condition

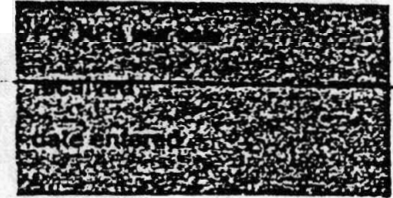
Excellent  
 Good  
 Fair

Deteriorated  
 Ruins  
 Unexposed

Unaltered  
 Altered

United States Department of the Interior  
National Park Service

National Register of Historic Places  
Inventory—Nomination Form



Continuation sheet 101

Item number 7 &amp; 8

Page 2

Code: JA-041

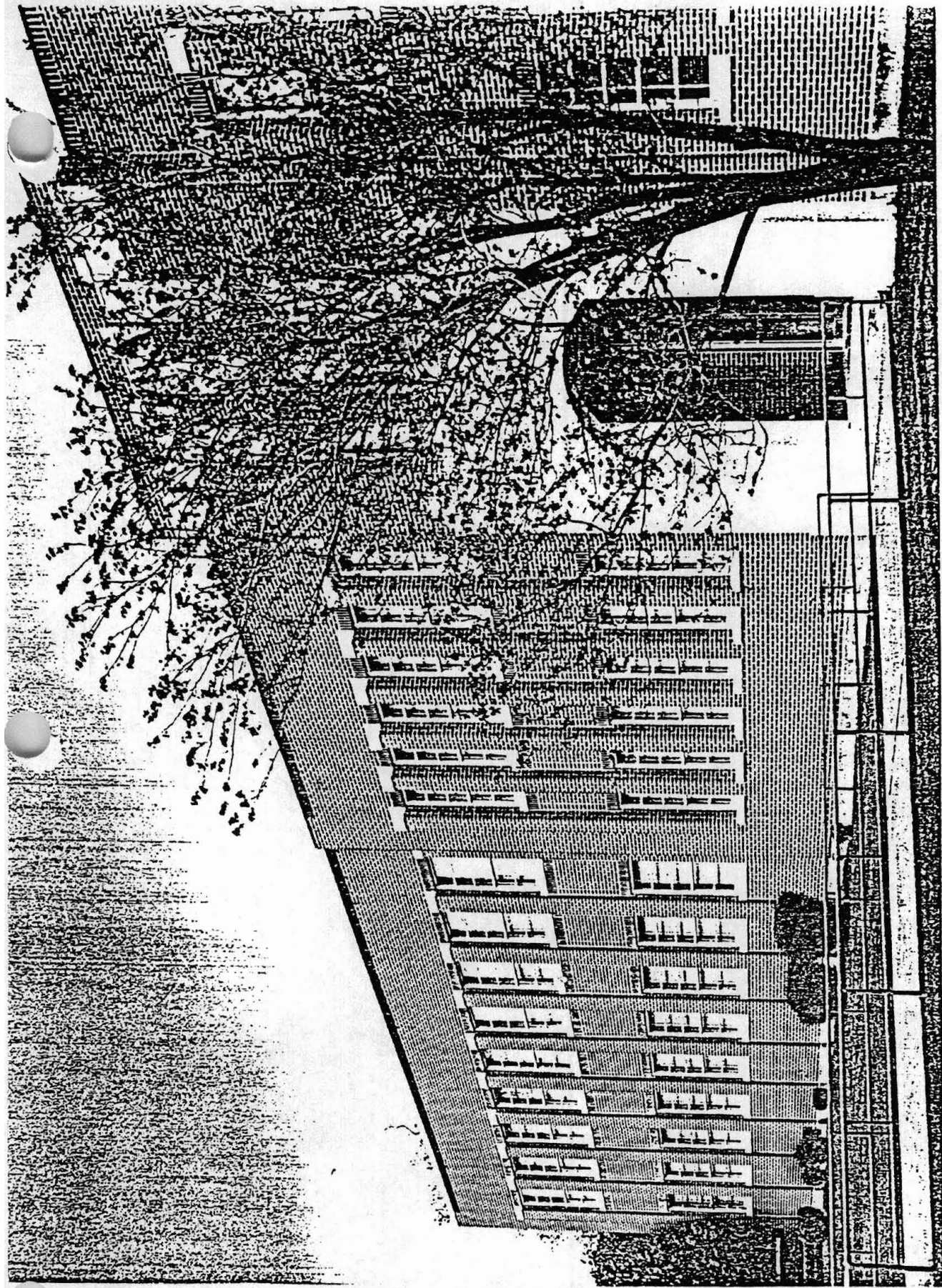
(Rommel Park, Newport, AR)

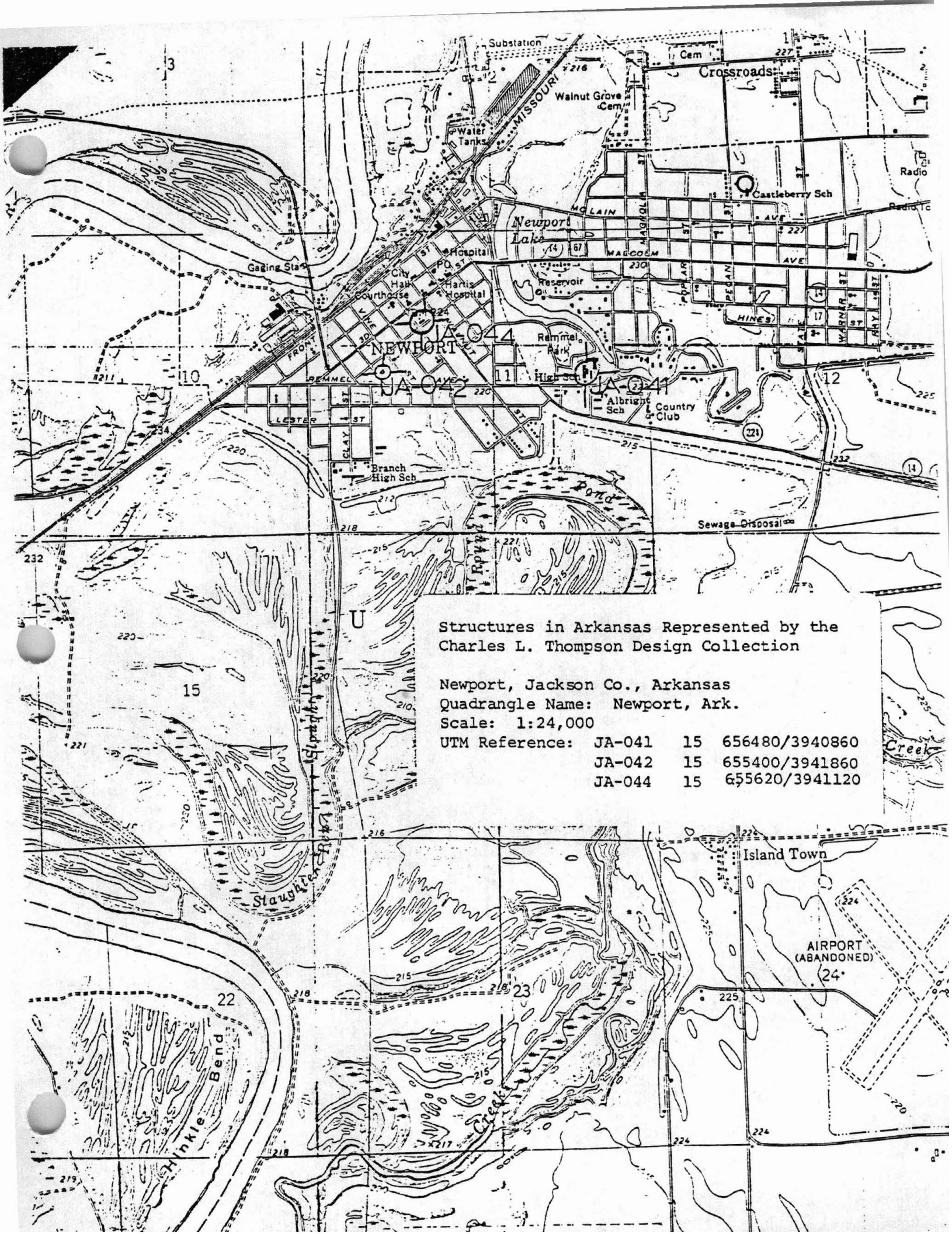
Physical Description

This exceptionally long, rectangular structure exhibits a strong Art Deco influence. The two-story school, faced with red brick, has a flat roof and is set on a low cast stone foundation. The massing is composed of three blocks: a projecting central block, and two flanking ones. The entire facade is organized into bays with single windows articulated by long, slender brick piers terminating in simple stone blocks. These stone blocks and the stone sills beneath each window create strong and colorful horizontal rhythms which counteract the verticality of the brick piers. The blocks are differentiated through the use of smaller, narrow windows on the central block. The entrance is marked by a projecting cast stone segmental arch opening framed by slender vertical panels with pointed corners in stylized geometric motifs. Marking the entrance at parapet level are a series of rectangular stone panels carved with stylized geometric motifs.

Statement of Significance

In 1930 the firm of Thompson, Sanders, and Ginocchio designed the Newport Junior and Senior High School Building. Constructed that same year, the building is one of the few Art Deco-influenced designs in the nomination based on the firm's drawing collection. The Newport School displays the "streamlined modern" concept in architecture at the time. This school is unique to the nominated structures in its variation from the historical details which characterized many of the firm's large buildings. The Newport School is a two-story red brick building which features the traits of Art Deco design in its straight geometric lines. The long rectangular building is marked by a projecting entrance of cast stone. This arched entrance features slender vertical panels with geometric motifs. Located in a complex of Newport public school buildings in a park setting, the Newport Junior and Senior High School is an important historic structure to the northeastern Arkansas city.





Structures in Arkansas Represented by the  
Charles L. Thompson Design Collection

Newport, Jackson Co., Arkansas  
 Quadrangle Name: Newport, Ark.  
 Scale: 1:24,000

UTM Reference:	JA-041	15	656480/3940860
	JA-042	15	655400/3941860
	JA-044	15	655620/3941120

Island Town

AIRPORT  
(ABANDONED)

15

22

23

24