

United States Department of the Interior  
National Park Service

National Register of Historic Places  
Registration Form

NR 9/24/04

This form is for use in nominating or requesting determinations for individual properties and districts. See instructions in *How to Complete the National Register of Historic Places Registration Form* (National Register Bulletin 16A). Complete each item by marking "X" in the appropriate box or by entering the information requested. If an item does not apply to the property being documented, enter "N/A" for "not applicable." For functions, architectural classification, materials, and areas of significance, enter only categories and subcategories from the instructions. Place additional entries and narrative items on continuation sheets (NPS Form 10-900a). Use a typewriter, word processor, or computer, to complete all items.

1. Name of Property

historic name Big Bottom Slough Bridge  
other names/site number Bridge #14014, Site #IN0623

2. Location

street & number County Road 58 (Padgett Island Rd)  not for publication  
city or town Magness  vicinity  
state Arkansas code AR county Independence code 063 zip code 72553

3. State/Federal Agency Certification

As the designated authority under the National Historic Preservation Act, as amended, I hereby certify that this  nomination   
request for determination of eligibility meets the documentation standards for registering properties in the National Register of Historic  
Places and meets the procedural and professional requirements set for in 36 CFR Part 60. In my opinion, the property  meets   
does not meet the National Register criteria. I recommend that this property be considered significant.

nationally  statewide  locally. (See continuation sheet for additional comments.)

Colleen Matthews 7/20/04  
Signature of certifying official/Title Date

Arkansas Historic Preservation Program  
State or Federal agency and bureau

In my opinion, the property  meets  does not meet the National Register criteria. ( See Continuation sheet for additional comments.)

\_\_\_\_\_  
Signature of certifying official/Title Date

\_\_\_\_\_  
State or Federal agency and bureau

4. National Park Service Certification

I hereby certify that the property is:

- entered in the National Register.  
 See continuation sheet
- determined eligible for the National Register.  
 See continuation sheet
- determined not eligible for the National Register.
- removed from the National Register.
- other, (explain:) \_\_\_\_\_

Signature of the Keeper

Date of Action

\_\_\_\_\_  
\_\_\_\_\_  
\_\_\_\_\_  
\_\_\_\_\_

5. Classification

Ownership of Property

(Check as many boxes as apply)

- private
- public-local
- public-State
- public-Federal

Category of Property

(Check only one box)

- building(s)
- district
- site
- structure
- object

Number of Resources within Property

(Do not include previously listed resources in count.)

Contributing	Noncontributing	
		buildings
		sites
1		structures
		objects
1		Total

Name of related multiple property listing

(Enter "N/A" if property is not part of a multiple property listing.)

Historic Bridges of Arkansas

Number of Contributing resources previously listed in the National Register

6. Function or Use

Historic Functions

(Enter categories from instructions)

TRANSPORTATION/road-related (vehicular)/bridge

Current Functions

(Enter categories from instructions)

TRANSPORTATION/road-related (vehicular)/bridge

7. Description

Architectural Classification

(Enter categories from instructions)

OTHER/Pratt thru-truss

Materials

(Enter categories from instructions)

foundation CONCRETE

walls N/A

roof N/A

other STEEL

Narrative Description

(Describe the historic and current condition of the property on one or more continuation sheets.)

8. Statement of Significance

Applicable National Register Criteria

(Mark "x" in one or more boxes for the criteria qualifying the property for National Register listing.)

- A Property is associated with events that have made a significant contribution to the broad patterns of our history.
B Property is associated with the lives of persons significant in our past.
C Property embodies the distinctive characteristics of a type, period, or method of construction or represents the work of a master, or possesses high artistic values, or represents a significant and distinguishable entity whose components lack individual distinction.
D Property has yielded, or is likely to yield, information important in prehistory or history.

Criteria Considerations

(Mark "x" in all the boxes that apply.)

Property is:

- A owned by a religious institution or used for religious purposes.
B removed from its original location.
C birthplace or grave of a historical figure of outstanding importance.
D a cemetery.
E a reconstructed building, object, or structure.
F a commemorative property
G less than 50 years of age or achieved significance within the past 50 years.

Levels of Significance (local, state, national)

Local

Areas of Significance (Enter categories from instructions)

TRANSPORTATION
ENGINEERING

Period of Significance

1909-1954

Significant Dates

1909-1954

Significant Person (Complete if Criterion B is marked)

Cultural Affiliation (Complete if Criterion D is marked)

Architect/Builder

Narrative Statement of Significance

(Explain the significance of the property on one or more continuation sheets.)

9. Major Bibliographical References

Bibliography

(Cite the books, articles, and other sources used in preparing this form on one or more continuation sheets.)

Previous documentation on file (NPS):

- preliminary determination of individual listing (36 CFR 67) has been requested
previously listed in the National Register
Previously determined eligible by the National Register
designated a National Historic Landmark
recorded by Historic American Buildings Survey #
recorded by Historic American Engineering Record #

Primary location of additional data:

- State Historic Preservation Office
Other State Agency
Federal Agency
Local Government
University
Other

Name of repository:

Arkansas State Highway & Transportation Department

Big Bottom Slough Bridge

Name of Property

Independence County, Arkansas

County and State

10. Geographical Data

Acreage of Property Less than one

UTM References

(Place additional UTM references on a continuation sheet.)

1	15	637827	3948441	3			
	Zone	Easting	Northing		Zone	Easting	Northing
2				4			

See continuation sheet

Verbal Boundary Description

(Describe the boundaries of the property on a continuation sheet.)

Boundary Justification

(Explain why the boundaries were selected on a continuation sheet.)

11. Form Prepared By

name/title Ralph S. Wilcox, National Register & Survey Coordinator

organization Arkansas Historic Preservation Program date \_\_\_\_\_

street & number 1600 Tower Building, 323 Center Street telephone (501)324-9787

city or town Little Rock state AR zip code 72201

Additional Documentation

Submit the following items with the completed form:

Continuation Sheets

Maps

- A USGS map (7.5 or 15 minute series) indicating the property's location
- A Sketch map for historic districts and properties having large acreage or numerous resources.

Photographs

Representative black and white photographs of the property.

Additional items

(Check with the SHPO or FPO for any additional items.)

Property Owner

(Complete this item at the request of SHPO or FPO.)

name Independence County

street & number 192 East Main Street telephone \_\_\_\_\_

city or town Batesville state AR zip code 72501

Paperwork Reduction Act Statement: This information is being collected for applications to the National Register of Historic Places to nominate properties for listing or determine eligibility for listing, to list properties, and to amend existing listing. Response to this request is required to obtain a benefit in accordance with the National Historic Preservation Act, as amended (16 U.S.C. 470 et seq.)

Estimated Burden Statement: Public reporting burden for this form is estimated to average 18.1 hours per response including time for reviewing instructions, gathering and maintaining data, and completing and reviewing the form. Direct comments regarding this burden estimate or any aspect of this form to the Chief, Administrative Services Division, National Park Service, P. O. Box 37127, Washington, DC 20013-7127, and the Office of Management and Budget, Paperwork Reduction Projects (1024-0018), Washington, DC 20303.

United States Department of the Interior  
National Park Service

## National Register of Historic Places Continuation Sheet

Section number 7 Page 1

---

### SUMMARY

The Big Bottom Slough Bridge is located at the only point where County Road 58 (also known as Padgett Island Road) crosses the Big Bottom Slough. It is located approximately two and one-half miles south of Arkansas Highway 69 and the town of Magness. Comprised of one span measuring 110 feet long, this pin-connected steel Pratt thru-truss has a total length of 192 feet.

### ELABORATION

The Pratt truss was first developed by Thomas and Caleb Pratt in 1844, and contains diagonals in tension and verticals in compression. Since it is a thru-truss, the bridge carries its traffic load with the bottom chords.

The Big Bottom Slough Bridge consists of a single pin-connected Pratt thru-truss span measuring 110 feet, with a total structure length of 192 feet. The bridge is accessed from both north and south. The vertical clearance inside the truss portal is 11.6 feet. The travel surface and overall width of the bridge is 12 feet. The deck surface is wood laid over a steel truss. The abutments are concrete. A pair of side-by-side Pratt trusses run the entire length of the bridge on the east and west sides.

### INTEGRITY

No structural alterations have been made to the bridge to compromise its integrity. Its location remains rural, and its setting remains pristine. The bridge still illustrates its original design and materials. In addition, the bridge is still in use for vehicular travel.

United States Department of the Interior  
National Park Service

## National Register of Historic Places Continuation Sheet

Section number 8 Page 1

### SUMMARY

Constructed in 1909, the Big Bottom Slough Bridge is being nominated to the National Register of Historic Places with **local significance** under **Criterion C** as the best example of a Pratt thru-truss bridge in the Magness-Newark vicinity. The bridge is also being nominated under **Criterion A** for its associations with the development of vehicular transportation in Independence County. This nomination is being submitted under the multiple-property listing "Historic Bridges of Arkansas."

### ELABORATION

Though records of settlement in Independence County before 1820 are extremely scarce, an account by William Russell (a land surveyor for the Missouri Territory), written in 1814, describes a series of settlements along the White River, within the area that would become Independence County. One of those settlements was Poke Bayou, which is considered the forerunner of Batesville, the county seat. The act creating Independence County was approved and signed by Territorial Governor James Miller on October 23, 1820. Independence County was the fourth county created after Arkansas became a territory.

During the formative years of the county, the primary modes of transportation were by riverboat or railway. By 1910, a small number of automobiles had been introduced, and by 1916, the number of autos reached 152. As this number increased, there was a demand for roads and bridges, although this demand did not reach its peak until the 1920s. In 1913, the *Batesville Guard* (the county's oldest newspaper still in operation) reported meetings in the courthouse to discuss various proposals for building a bridge across the White River at Batesville. However, the bridge was not built for another fourteen years. In 1917, the first real effort was made to create a major state road through the county, from Mammoth Spring (Fulton County) to Little Rock.

The Big Bottom Slough Bridge was constructed in 1909, but little is known about who constructed the bridge. County Road 58 (Padgett Island Road), on which the bridge is located, travels due south out of the town of Magness and through a heavily cultivated agricultural area. The southern and western boundaries of this area are formed by the White River, while the Big Bottom Slough forms the northern and eastern boundaries. Inside these boundaries lies a fertile alluvial plain known as Padgett Island. At the point where County Road 58 and the Big Bottom Slough meet sits the Big Bottom Slough Bridge, which must have been constructed to allow access to the fertile farmlands of Padgett Island between the slough and the river. The bridge is still in use today to access the same area.

### STATEMENT OF SIGNIFICANCE

Constructed in 1909, the Big Bottom Slough Bridge is being nominated to the National Register of Historic Places with **local significance** under **Criterion C** as the best example of a Pratt thru-truss bridge in the Magness-Newark vicinity. The bridge is also being nominated under **Criterion A** for its associations with the development of vehicular transportation in Independence County. This nomination is being submitted under the multiple-property listing "Historic Bridges of Arkansas."

Big Bottom Slough Bridge

Name of Property

Independence County, Arkansas

County and State

United States Department of the Interior

National Park Service

# National Register of Historic Places Continuation Sheet

Section number   9   Page   1  

---

Information on Independence County history from  
<http://fly.hiwaay.net/~dmglenn/april76.htm>

**United States Department of the Interior**  
National Park Service

# National Register of Historic Places

## Continuation Sheet

Section number 10 Page 1

---

### VERBAL BOUNDARY DESCRIPTION

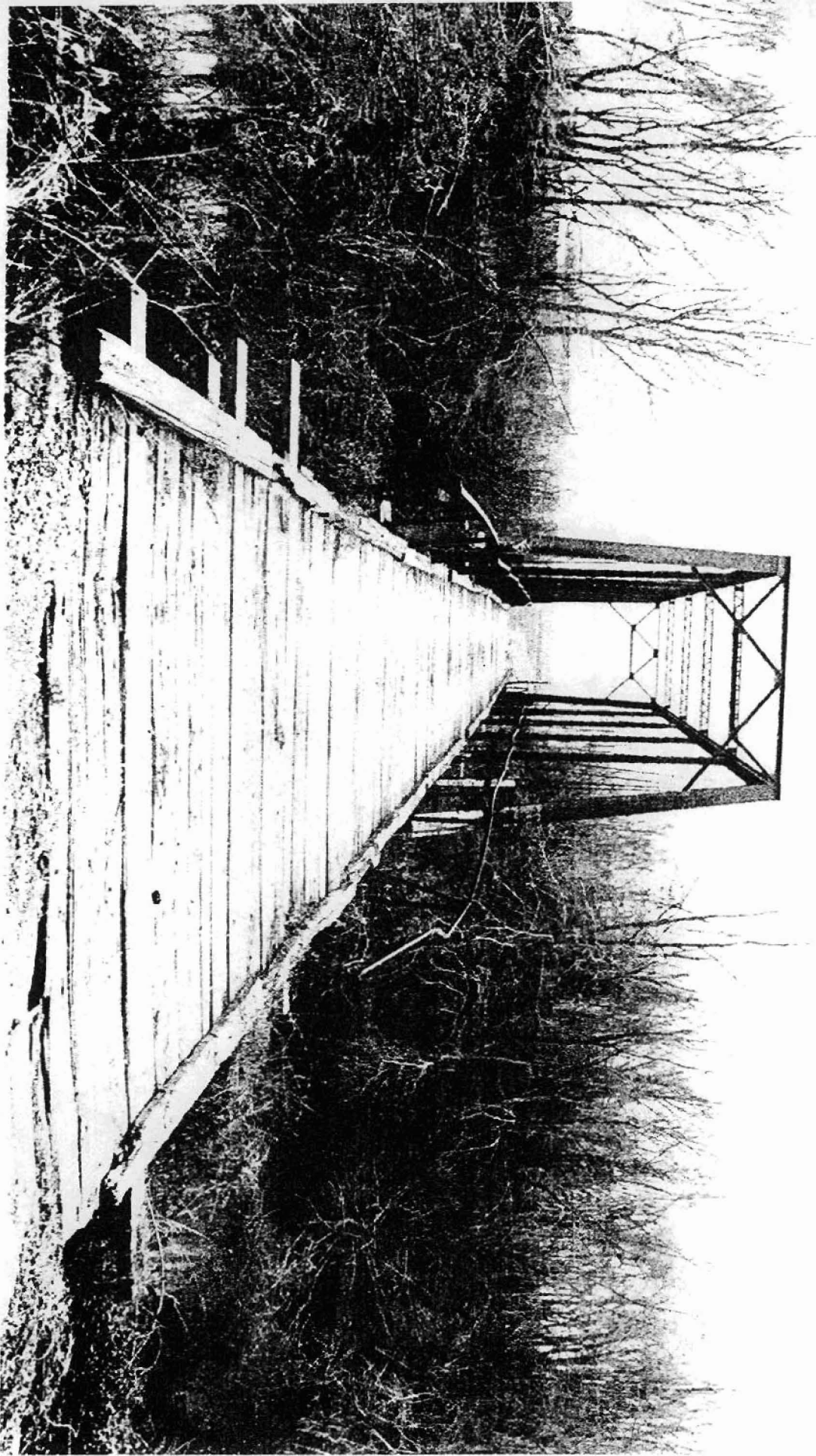
From a point 75 feet south-southeast of the southeastern corner of the bridge, proceed north-northwest 300 feet, then proceed west-southwest 75 feet, then proceed south-southeast 300 feet, then proceed east-northeast 75 feet to the point of beginning.

### BOUNDARY JUSTIFICATION

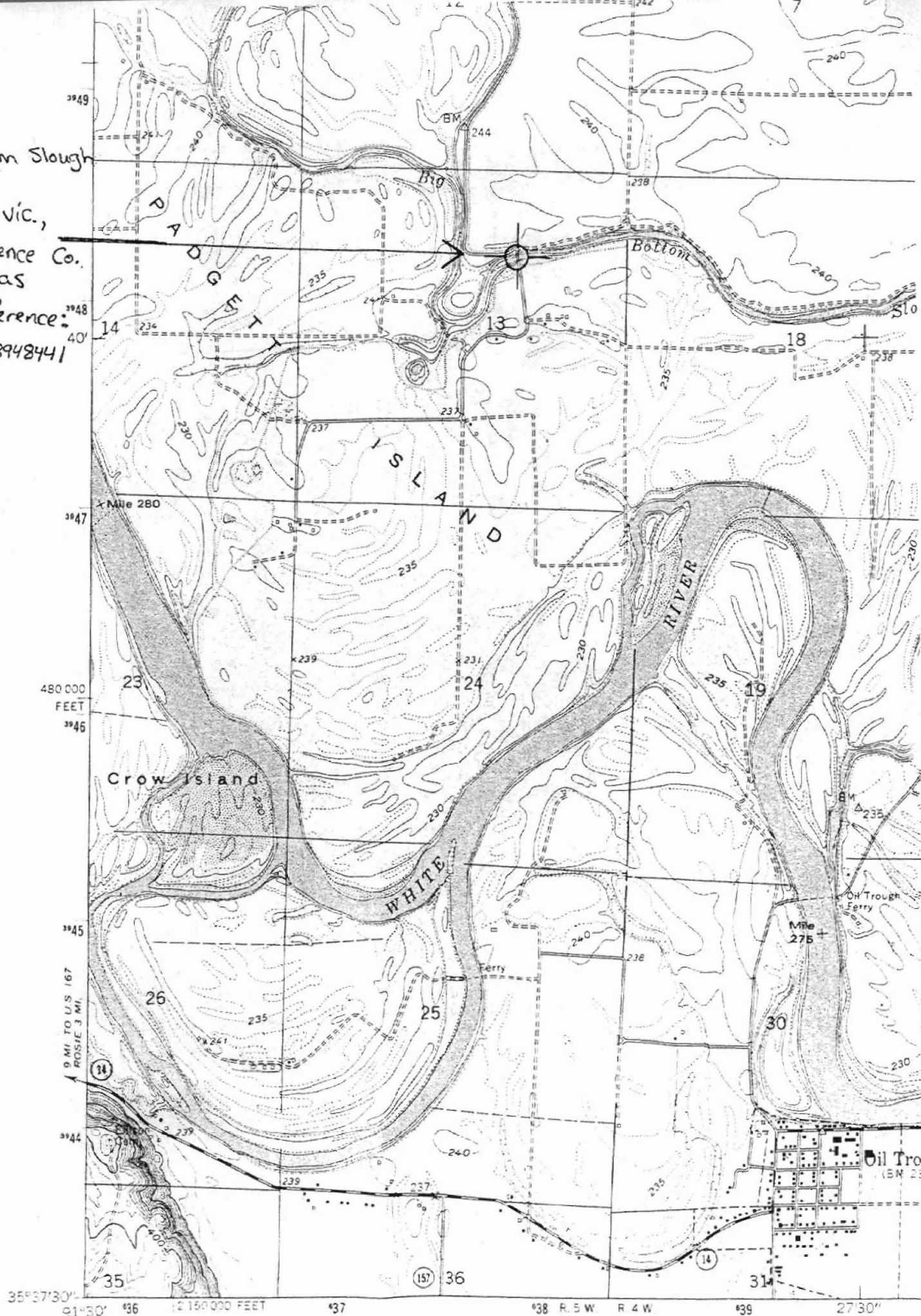
This boundary includes the Big Bottom Slough Bridge and its immediate setting.







Bottom Slough  
 Bridge  
 Magness vic.,  
 Independence Co.  
 Arkansas  
 UTM Reference:  
 15/63182T/3948441



35°37'30" 91°30' 436 1:250,000 FEET 437 438 R. 5 W. R. 4 W. 439 27°30"