

NR listed 9/04/92

United States Department of the Interior
National Park Service

NATIONAL REGISTER OF HISTORIC PLACES
REGISTRATION FORM

=====

1. Name of Property

=====

historic name: Moorefield School

other name/site number: IN0562

=====

2. Location

=====

street & number: Northern side of Ham Street

not for publication: N/A

city/town: Moorefield

vicinity: N/A

state: AR

county: Independence

code: AR 063

zip code: 72501

=====

3. Classification

=====

Ownership of Property: Private

Category of Property: Building

Number of Resources within Property:

Contributing	Noncontributing	
<u>1</u>	_____	buildings
_____	_____	sites
_____	_____	structures
_____	_____	objects
<u>1</u>	<u>0</u>	Total

Number of contributing resources previously listed in the National Register: N/A

Name of related multiple property listing: Public Schools in the Arkansas Ozarks, 1920-1940

=====

4. State/Federal Agency Certification

=====

As the designated authority under the National Historic Preservation Act of 1986, as amended, I hereby certify that this X nomination _____ request for determination of eligibility meets the documentation standards for registering properties in the National Register of Historic Places and meets the procedural and professional requirements set forth in 36 CFR Part 60. In my opinion, the property X meets _____ does not meet the National Register Criteria. _____ See continuation sheet.

Cathryn S. Byrd _____ 8-21-92
Signature of certifying official Date

Arkansas Historic Preservation Program
State or Federal agency and bureau

In my opinion, the property _____ meets _____ does not meet the National Register criteria. _____ See continuation sheet.

Signature of commenting or other official Date

State or Federal agency and bureau

=====

5. National Park Service Certification

=====

I, hereby certify that this property is:

- _____ entered in the National Register _____
_____ See continuation sheet.
- _____ determined eligible for the _____
National Register _____
_____ See continuation sheet.
- _____ determined not eligible for the _____
National Register _____
- _____ removed from the National Register _____
- _____ other (explain): _____

Signature of Keeper Date
of Action

=====

6. Function or Use

=====

Historic: EDUCATION Sub: School

Current: RELIGION Sub: Religious Facility

=====

7. Description

=====

Architectural Classification:

LATE 19TH AND EARLY 20TH CENTURY AMERICAN MOVEMENTS
Craftsman

Other Description: Plain Traditional

Materials: foundation Stone roof Asphalt
walls Stone other N/A

Describe present and historic physical appearance. See continuation sheet.

=====

8. Statement of Significance

=====

Certifying official has considered the significance of this property in relation to other properties: Locally.

Applicable National Register Criteria: A

Criteria Considerations (Exceptions): A

Areas of Significance: EDUCATION
SOCIAL HISTORY

Period(s) of Significance: 1936-1940

Significant Dates: N/A

Significant Person(s): N/A

Cultural Affiliation: N/A

Architect/Builder: National Youth Administration

State significance of property, and justify criteria, criteria considerations, and areas and periods of significance noted above.
 See continuation sheet.

=====

9. Major Bibliographical References

=====

See "Public Schools in the Arkansas Ozarks, 1920-1940" Multiple Property Form, Section H.

___ See continuation sheet.

Previous documentation on file (NPS):

- preliminary determination of individual listing (36 CFR 67) has been requested.
- previously listed in the National Register
- previously determined eligible by the National Register
- designated a National Historic Landmark
- recorded by Historic American Buildings Survey # _____
- recorded by Historic American Engineering Record # _____

Primary Location of Additional Data:

- State historic preservation office
- Other state agency
- Federal agency
- Local government
- University
- Other -- Specify Repository: _____

=====

10. Geographical Data

=====

Acreage of Property: Less than one

UTM References: Zone Easting Northing Zone Easting Northing

A	<u>15</u>	<u>629250</u>	<u>3959100</u>	B	___	___	___
C	___	___	___	D	___	___	___

___ See continuation sheet.

Verbal Boundary Description: ___ See continuation sheet.

Beginning at a point formed by the intersection of a line running along the northern edge of Ham Street with a perpendicular line running parallel with the building's western elevation and located 25 feet to the west thereof, proceed northerly along said line for a distance of approximately 100 feet to its intersection with a perpendicular line running parallel to the building's northern elevation; thence proceed easterly along said line for a distance of approximately 100 feet to its intersection with a line running parallel to the building's eastern elevation; thence proceed southerly along said line for a distance of approximately 100 feet to its intersection with a perpendicular line running along the northern edge of Ham Street; thence proceed westerly along said line for a distance of approximately 100 feet to the point of beginning.

Boundary Justification: ___ See continuation sheet.

This boundary includes both the historic resource and all the surrounding property known to have been historically associated therewith that retains its integrity.

=====

11. Form Prepared By

=====

Name/Title: Kenneth Story, National Register Coordinator

Organization: Arkansas Historic Preservation Program Date: July 16, 1992

Street & Number: 225 E. Markham, Suite 300 Telephone: (501) 324-9346

City or Town: Little Rock State: AR ZIP: 72201

United States Department of the Interior
National Park Service

National Register of Historic Places Continuation Sheet

Section number 7 Page 1

Summary

The Moorefield School is a single story structure constructed by the National Youth Association in 1936-37. The building, designed in the Plain Traditional style, is typical of NYA/WPA-constructed school houses and features some Craftsman influences.

Elaboration

The Moorefield School is a single story school house constructed by the NYA in 1936-37. The plan is rectangular and consists of a full basement supporting fieldstone walls detailed with grapevine pointing. The walls are covered with a composition - shingled, gable on hipped roof. The rafters are exposed under the eaves in the traditional Craftsman style. There is one other interior chimney.

The western elevation features a parapeted porch. Two entry doors are nine panes each. The lower doors are cross hatched. There is a single nine over nine window with the upper sash covered with board fabric.

The southern elevation was originally fenestrated by three sets of six nine-over-nine double hung windows symmetrically arranged.

The eastern elevation features a stoop with shed roof and six nine-over-nine windows with board covered upper sashes.

The northern elevation features a second parapeted double entry porch and ten nine-over-nine windows with boarded over upper sashes.

The marker text reads "Created by National Youth Administration in Cooperation with Moorefield School District:

Y.M. Mack - President

John Huskey - Secretary

A.E. Barnes, E.L. Manning, Paul B. Goodwin

The Moorefield School consolidated in Batesville system in 1947 and the structure now houses the Rehobeth Baptist Church.

United States Department of the Interior
National Park Service

National Register of Historic Places Continuation Sheet

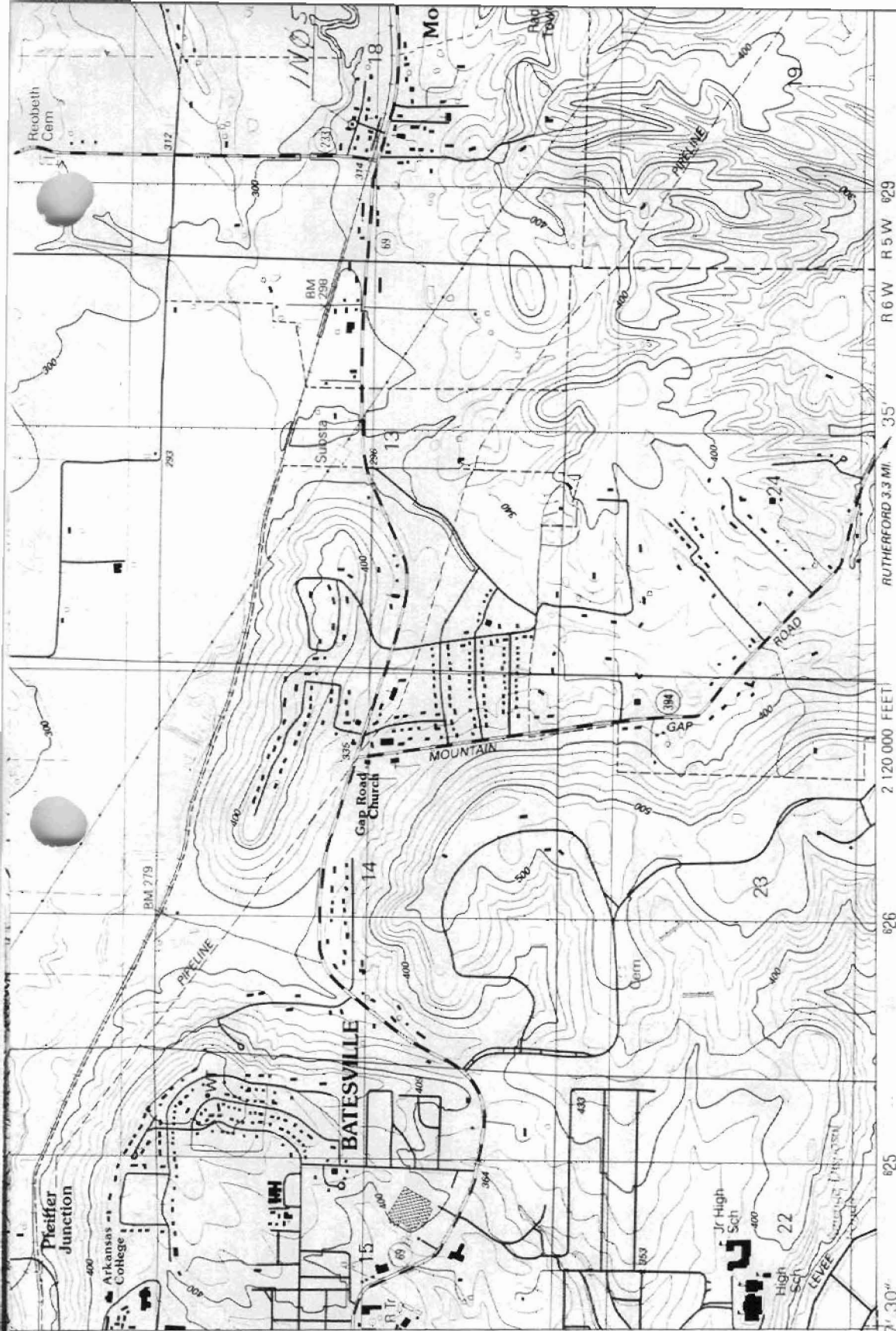
Section number 8 Page 1

Moorefield School

The town of Moorefield lies just four miles to the east of Batesville, where the White River emerges from the Ozarks; as such, Moorefield has always been dependent on the economic and industrial fortunes of its larger neighbor, the center of government and economic locus of Independence County. During the 1930's, Batesville and central Independence County was a major processing center for the agricultural and mineral products of both the upland Ozarks and the lowland Delta, from fruits, cotton, poultry, and dairy products to marble, manganese, and limestone. With the advent of the Depression, the economic livelihood of central Independence County took a downturn, and in 1936 the Works Progress Administration authorized the construction of a new school at Moorefield as a means of providing employment to the local citizenry.¹

The Moorefield School, constructed during the period covered by the historic context *The Evolution of the Public School System in the Arkansas Ozarks, 1920-1940*, is a representative example of a small stone school building constructed for a rural school district. Its documented construction by the N.Y.A. and its use during this period as a local school building clearly identify it with this historic context and with this property type. It is significant locally under Criterion A through its direct associations with both the history of the evolution of the public school system in the Ozark Mountain region of the state during this period and the N.Y.A.

¹The WPA Guide to 1930's Arkansas (Lawrence, Kansas: University Press of Kansas, 1987), 384-386.



Produced by the United States Geological Survey

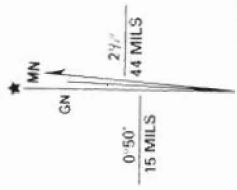
Control by USGS and NOS/NOAA

Topography by photogrammetric methods from aerial photographs taken 1986. Field checked 1987. Map edited 1989. Supersedes Sulphur Rock map dated 1943.

Projection and 10,000-foot grid ticks: Arkansas coordinate system, north zone (Lambert conformal conic) 1000-meter Universal Transverse Mercator grid, zone 15 1927 North American Datum

To place on the predicted North American Datum 1983, move the projection lines 5 meters south and 12 meters east as shown by dashed corner ticks

Gray tint indicates areas in which only landmark buildings are shown. Fine red dashed lines indicate selected fence and field lines where normally visible on aerial photographs. This information is unchecked.



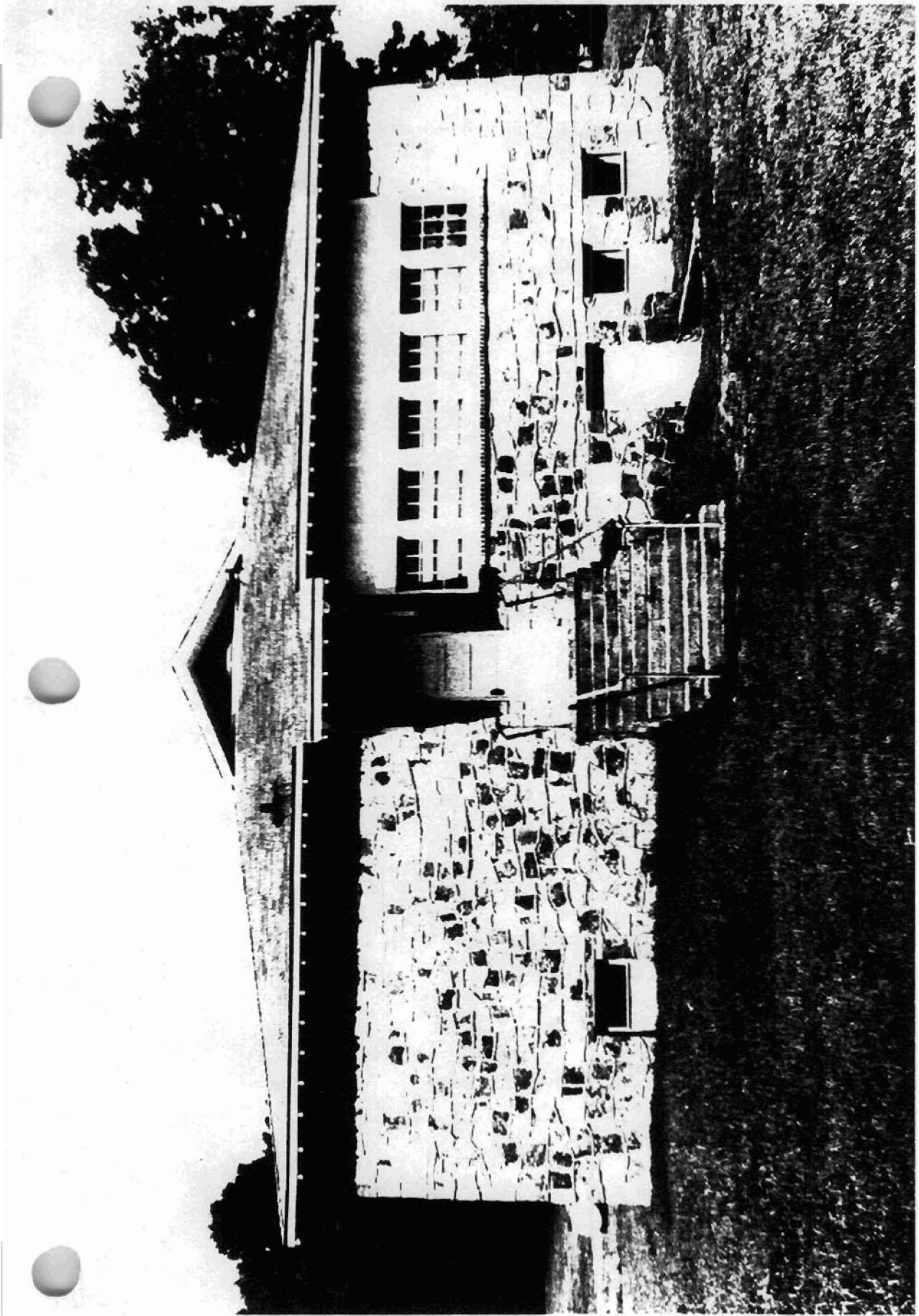
UTM GRID AND 1989 MAGNETIC NORTH DECLINATION AT CENTER OF SHEET



CONTO NATIONAL GEOLOGICAL SURVEY
 THIS MAP COMPLIES WITH
 FOR SALE BY U. S. GEOLOGICAL SURVEY,
 AND ARKANSAS GEOLOGICAL SURVEY.
 A FOLDER DESCRIBING TOPOGRAPHY

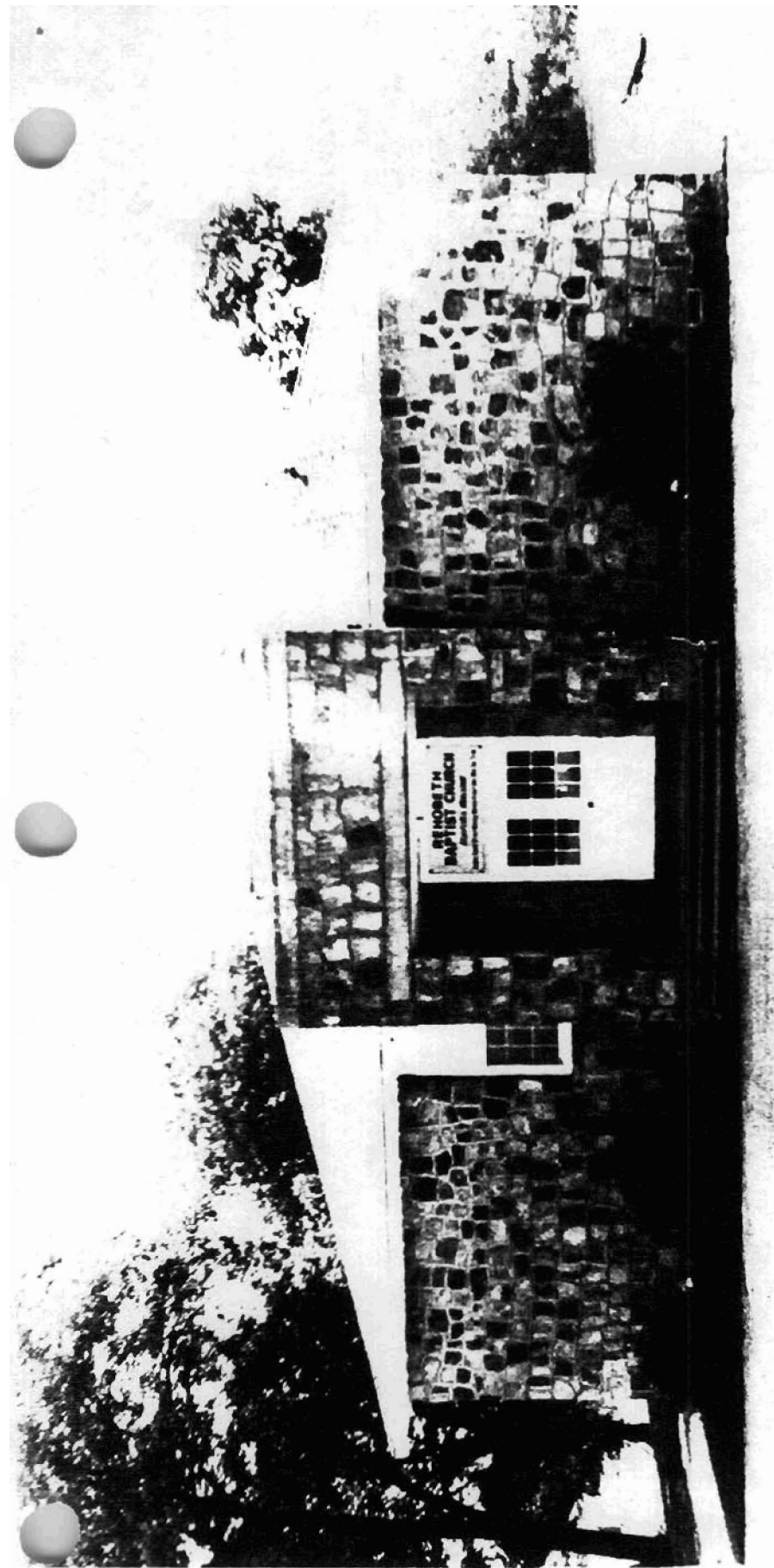
1100021102 3000
1100021102
1100021102
110029250/3959100
 IN 0502

JAMESTOWN
 1985 II NW



W. W. WOOD
PHOTOGRAPHER
PHOTOGRAPHERED BY W. W. WOOD
JULY, 1960
NEGATIVE ON FILE
VIEW FROM EAST

APP



MOOREFIELD SCHOOL
MOOREFIELD, INDEPENDENCE CO, ARKANSAS
PHOTOGRAPHED BY R. GINSBURG-ALLEN
JULY, 1990
NEGATIVE ON FILE AT AIPD
VIEW FROM WEST