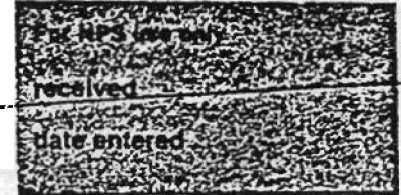


**United States Department of the Interior
National Park Service**

**National Register of Historic Places
Inventory—Nomination Form**



Continuation sheet 53

Item number 1, 2, 4, 6, & 10 Page 1

INDIVIDUAL DATA SHEET

General Description

Code: IN-039	Congressional District: First
Name: Dondy Building	Current Owner: T. W. Cooper
Address: 154 South Third Batesville, Arkansas	Address: 215 East College Batesville, Arkansas 72501
County: Independence	

Architectural Information

Architectural Firm: Theodore Sanders	
Date of Construction: ca 1918	Stylistic Influence: N/A
Original Use: Commercial	Present Use: Commercial

Geographical Information

UTM Reference: 15 621870/3959130	Acreage: less than one acre
Verbal Boundary Description: Addition to Old Town West 1/2 lots 5, 6, & 1/2 of lot 7 Block 18	

Condition

<input checked="" type="checkbox"/> Excellent	<input type="checkbox"/> Deteriorated	<input checked="" type="checkbox"/> Unaltered
<input type="checkbox"/> Good	<input type="checkbox"/> Ruins	<input type="checkbox"/> Altered
<input type="checkbox"/> Fair	<input type="checkbox"/> Unexposed	

United States Department of the Interior
National Park Service

National Register of Historic Places
Inventory—Nomination Form

For NPS use only
received
date entered

Continuation sheet 54

Item number 7 & 8

Page 2

Code: IN-039

(154 S. Third Street, Batesville)

Physical Description

This rectangular two-story commercial building with flat roof is constructed of native rock-faced sandstone, thus blending in harmoniously with the rest of Batesville's downtown commercial district. The upper part of second story on the front elevation is faced with dark red brick; creating a rich contrast in color and texture with the native stone. A decorative effect is created through the use of stone trim in the manner of a Gibbs surround of the upper windows and through the effect of stone quoins created by stones wrapping around the side elevation and appearing on the front. A simple smooth stone band is inset just beneath the parapet, and smooth stone lintels mark the second story windows. The upper windows appear singly, those on the lower story are grouped in pairs flanking the double leaf door. All windows are plate glass sash.

Statement of Significance

The two-story Dondy Building in downtown Batesville, Arkansas, was designed by Theo Sanders in 1918. Constructed of native rock-faced sandstone, the Dondy Building is typical of many of the older commercial structures in the city which are also of rock construction. The second story features an unusual blend of red brick and sandstone, creating a decorative effect in the otherwise plain expanse of stone walls. One of the more unusual commercial designs represented in the drawing collection, the Dondy Building blends harmoniously with the fabric of downtown Batesville, and reveals the designer's sensitivity to compatible designs well-integrated with their environment.

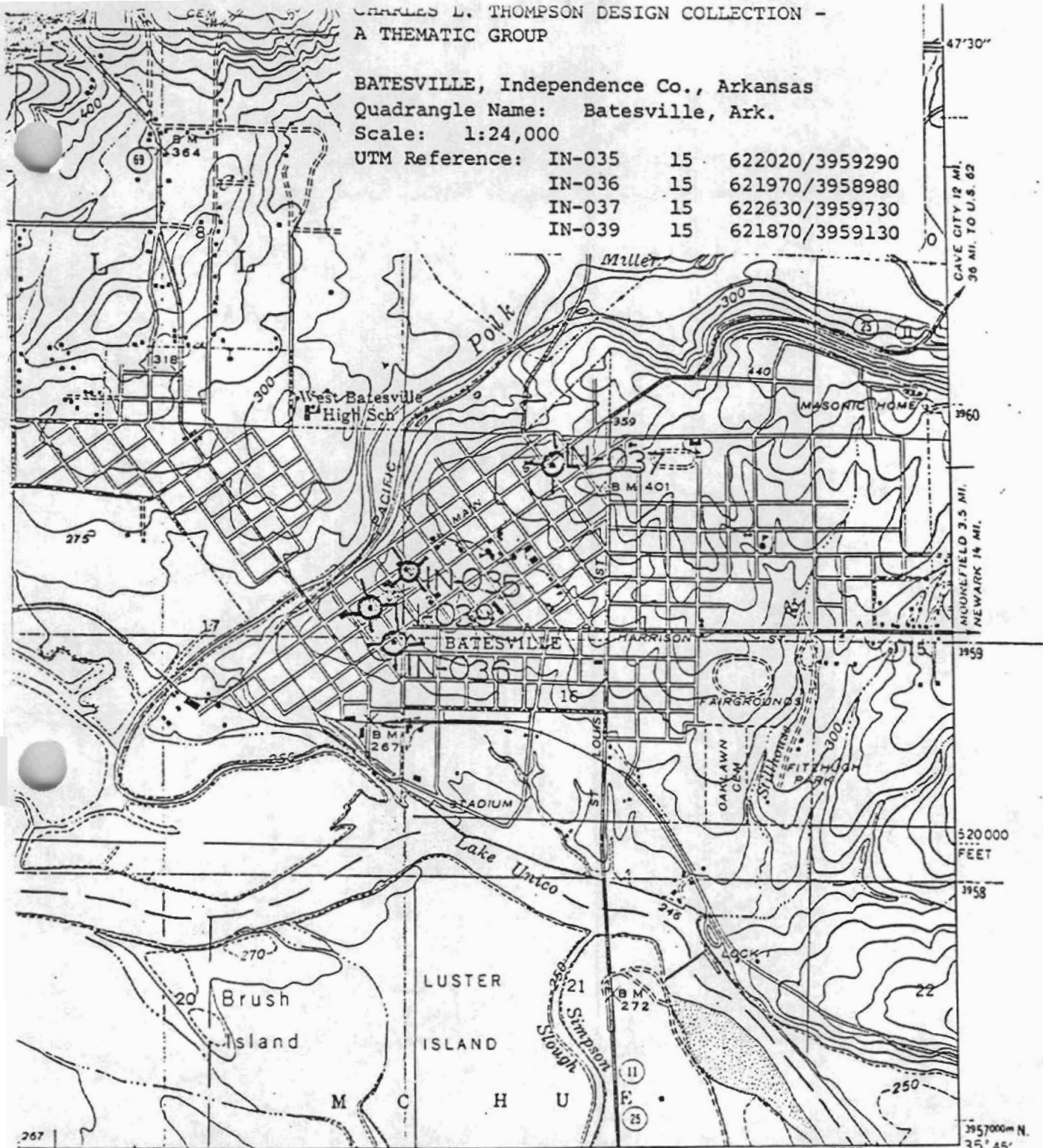
CHARLES L. THOMPSON DESIGN COLLECTION -
A THEMATIC GROUP

BATESVILLE, Independence Co., Arkansas

Quadrangle Name: Batesville, Ark.

Scale: 1:24,000

UTM Reference:	IN-035	15	622020/3959290
	IN-036	15	621970/3958980
	IN-037	15	622630/3959730
	IN-039	15	621870/3959130



Polyconic projection. 1927 North American datum
5000 yard grid based on U. S. zone system, C
10000 foot grid based on Arkansas (North)
rectangular coordinate system

1000-meter Universal Transverse Mercator grid ticks,
zone 15, shown in blue

ROAD CLASSIFICATION

- | | | |
|-------------|---------------|-----------------|
| Heavy-duty | 4 LANE 6 LANE | Light-duty |
| Medium-duty | 4 LANE 6 LANE | Unimproved dirt |
- U. S. Route State Route

BATESVILLE, ARK.

N 3545 - W 3537.5 / 7.5

1943

AMS 7655 I SW - SERIES V884

United States Department of the Interior
National Park Service

National Register of Historic Places
Inventory—Nomination Form



Continuation sheet 53

Item number 1, 2, 4, 6, & 10 Page 1

INDIVIDUAL DATA SHEET

General Description

Code: IN-039

Congressional District: First

Name: Dondy Building

Current Owner: T. W. Cooper

Address: 154 South Third
Batesville, Arkansas

Address: 215 East College
Batesville, Arkansas 72501

County: Independence

Architectural Information

Architectural Firm: Theodore Sanders

Date of Construction: ca 1918

Stylistic Influence: N/A

Original Use: Commercial

Present Use: Commercial

Geographical Information

UTM Reference: 15 621870/3959130

Acreage: less than one acre

Verbal Boundary Description: Addition to Old Town
West 1/2 lots 5, 6, & 1/2 of lot 7
Block 18

Condition

Excellent
 Good
 Fair

Deteriorated
 Ruins
 Unexposed

Unaltered
 Altered

United States Department of the Interior
National Park Service

National Register of Historic Places Inventory—Nomination Form

For NPS Use Only
received
date entered

Continuation sheet 54

Item number 7 & 8

Page 2

Code: IN-039

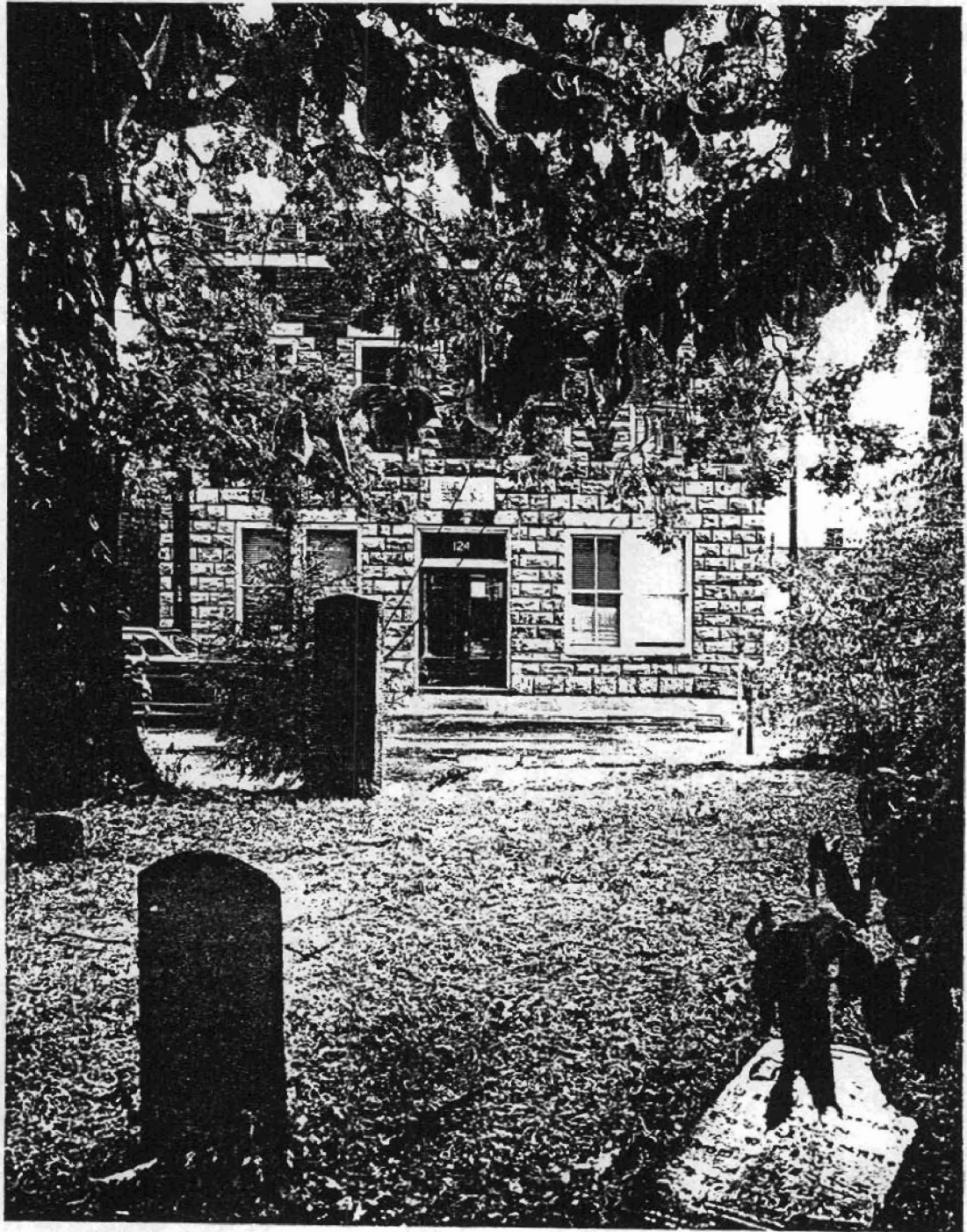
(154 S. Third Street, Batesville)

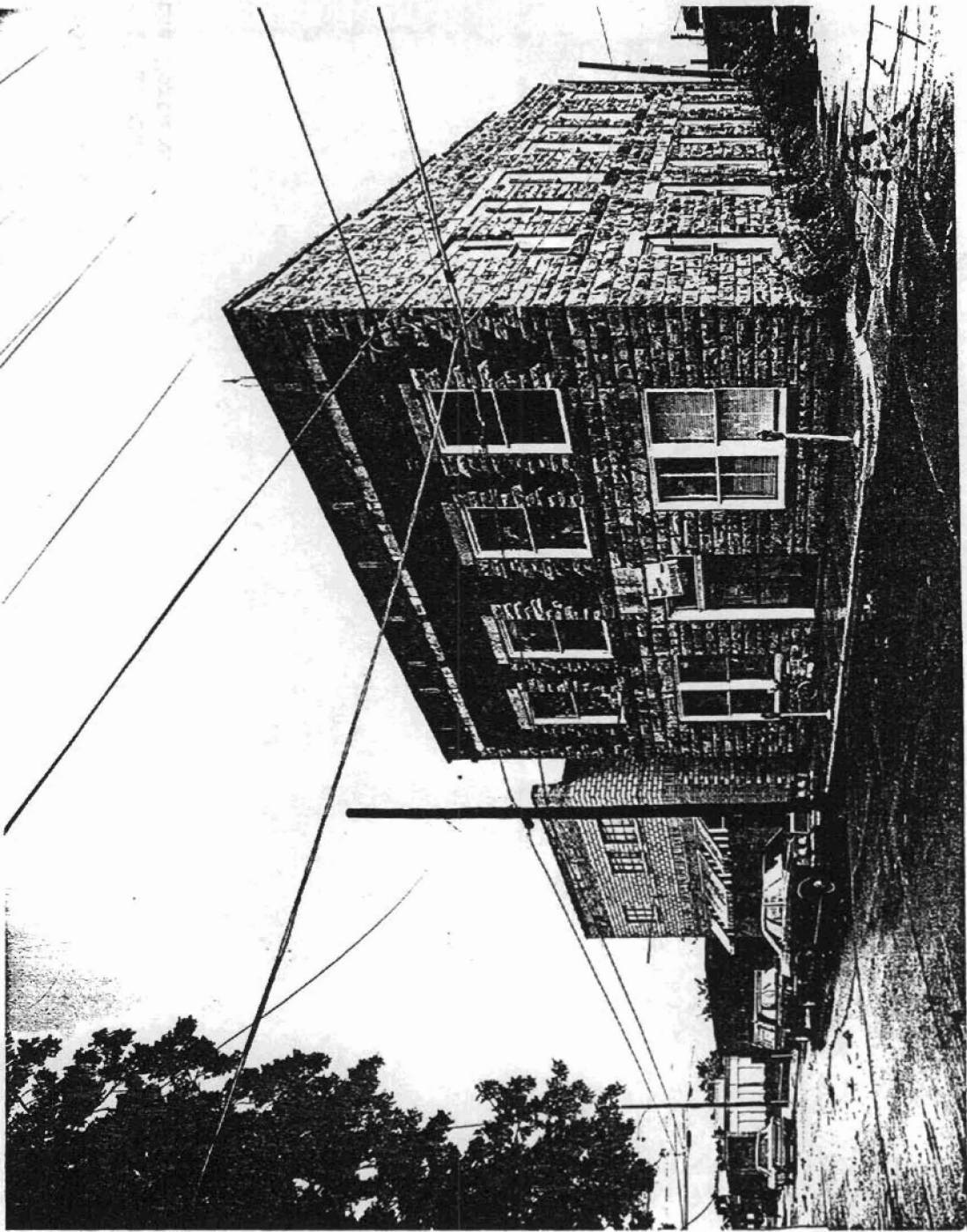
Physical Description

This rectangular two-story commercial building with flat roof is constructed of native rock-faced sandstone, thus blending in harmoniously with the rest of Batesville's downtown commercial district. The upper part of second story on the front elevation is faced with dark red brick; creating a rich contrast in color and texture with the native stone. A decorative effect is created through the use of stone trim in the manner of a Gibbs surround of the upper windows and through the effect of stone quoins created by stones wrapping around the side elevation and appearing on the front. A simple smooth stone band is inset just beneath the parapet, and smooth stone lintels mark the second story windows. The upper windows appear singly, those on the lower story are grouped in pairs flanking the double leaf door. All windows are plate glass sash.

Statement of Significance

The two-story Dondy Building in downtown Batesville, Arkansas, was designed by Theo Sanders in 1918. Constructed of native rock-faced sandstone, the Dondy Building is typical of many of the older commercial structures in the city which are also of rock construction. The second story features an unusual blend of red brick and sandstone, creating a decorative effect in the otherwise plain expanse of stone walls. One of the more unusual commercial designs represented in the drawing collection, the Dondy Building blends harmoniously with the fabric of downtown Batesville, and reveals the designer's sensitivity to compatible designs well-integrated with their environment.



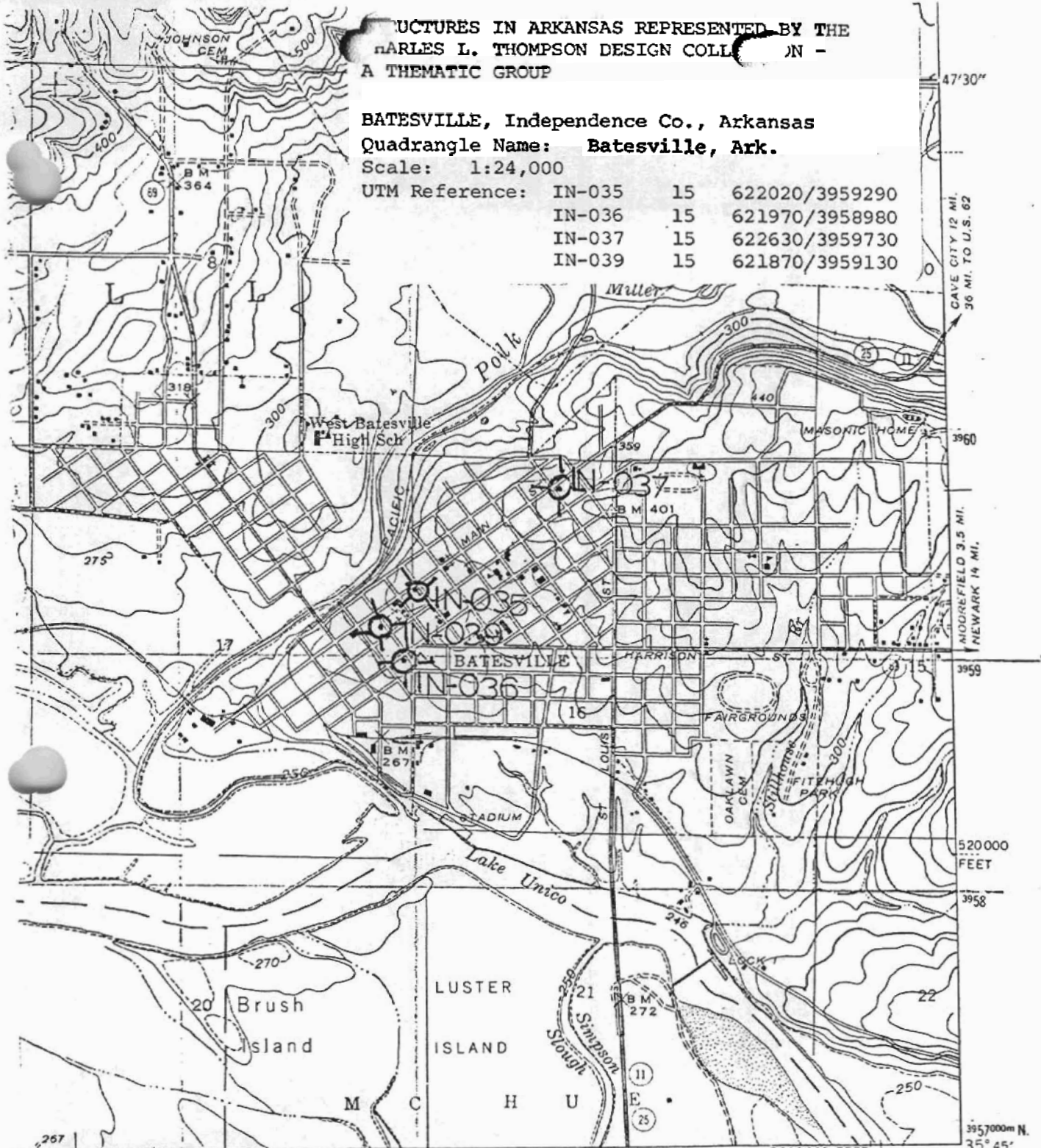


STRUCTURES IN ARKANSAS REPRESENTED BY THE
 CHARLES L. THOMPSON DESIGN COLLECTION -
 A THEMATIC GROUP

BATESVILLE, Independence Co., Arkansas
 Quadrangle Name: **Batesville, Ark.**

Scale: 1:24,000

UTM Reference: IN-035 15 622020/3959290
 IN-036 15 621970/3958980
 IN-037 15 622630/3959730
 IN-039 15 621870/3959130



0.9 MI. TO JUNG, ARK. II AND 20 BALD KNOR (JUNG, U.S. 67) 34 MI. 623000m E 2110000 FEET 91° 37' 30"

Polyconic projection. 1927 North American datum
 5000 yard grid based on U. S. zone system, C
 10000 foot grid based on Arkansas (North)
 rectangular coordinate system
 1000-meter Universal Transverse Mercator grid ticks,
 zone 15, shown in blue

ROAD CLASSIFICATION

Heavy-duty 4 LANE 6 LANE Light-duty
 Medium-duty ^ LANE 6 LANE Unimproved dirt
 U. S. Route State Route

BATESVILLE, ARK.

N 3545—W 3537.5/7.5

1943

AMS 7655 I SW—SERIES V884

72231