

United States Department of the Interior
National Park Service

NATIONAL REGISTER OF HISTORIC PLACES
REGISTRATION FORM

=====

1. Name of Property

=====

historic name: Cabin #1

other name/site number: N/A

=====

2. Location

=====

street & number: Lake Catherine State Park Cabin Area Access Road

not for publication: N/A

city/town: Shorewood Hills

vicinity: N/A

state: AR county: Hot Spring code: AR059 zip code: 72105

=====

3. Classification

=====

Ownership of Property: public-State

Category of Property: building

Number of Resources within Property:

Contributing	Noncontributing	
<u> 1 </u>	<u> </u>	buildings
<u> </u>	<u> </u>	sites
<u> </u>	<u> </u>	structures
<u> </u>	<u> </u>	objects
<u> 1 </u>	<u> 0 </u>	Total

Number of contributing resources previously listed in the National Register: N/A

Name of related multiple property listing: Facilities Constructed by the Civilian Conservation Corps in Arkansas, 1933-1942.

=====
4. State/Federal Agency Certification
=====

As the designated authority under the National Historic Preservation Act of 1986, as amended, I hereby certify that this X nomination _____ request for determination of eligibility meets the documentation standards for registering properties in the National Register of Historic Places and meets the procedural and professional requirements set forth in 36 CFR Part 60. In my opinion, the property X meets _____ does not meet the National Register Criteria. _____ See continuation sheet

Cathryn L. Slaton _____ 2-24-95
Signature of certifying official Date

Arkansas Historic Preservation Program
State or Federal agency and bureau

In my opinion, the property _____ meets _____ does not meet the National Register criteria. _____ See continuation sheet.

Signature of commenting or other official Date

State or Federal agency and bureau

=====
5. National Park Service Certification
=====

I, hereby certify that this property is:

- _____ entered in the National Register _____
_____ See continuation sheet.
- _____ determined eligible for the _____
National Register _____
- _____ See continuation sheet.
- _____ determined not eligible for the _____
National Register _____
- _____ removed from the National Register _____
- _____ other (explain): _____

Signature of Keeper Date
of Action

=====
6. Function or Use
=====

Historic: RECREATION AND CULTURE Sub: Outdoor Recreation

Current: RECREATION AND CULTURE Sub: Outdoor Recreation

=====
7. Description
=====

Architectural Classification:

OTHER: Rustic Resort

Other Description: N/A

Materials: foundation STONE roof ASPHALT
walls WOOD: Weatherboard other Stone Chimney

Describe present and historic physical appearance. X See continuation sheet.

=====
8. Statement of Significance
=====

Certifying official has considered the significance of this property in relation to other properties: Locally.

Applicable National Register Criteria: A and C

Criteria Considerations (Exceptions): N/A

Areas of Significance: Architecture
Entertainment/Recreation
Social History

Period(s) of Significance: 1935-1942

Significant Dates: N/A

Significant Person(s): N/A

Cultural Affiliation: N/A

Architect/Builder: Civilian Conservation Corps

State significance of property, and justify criteria, criteria considerations, and areas and periods of significance noted above.
X See continuation sheet.

=====
9. Major Bibliographical References
=====

X See continuation sheet.

Previous documentation on file (NPS):

- preliminary determination of individual listing (36 CFR 67) has been requested.
- previously listed in the National Register
- previously determined eligible by the National Register
- designated a National Historic Landmark
- recorded by Historic American Buildings Survey #
- recorded by Historic American Engineering Record #

Primary Location of Additional Data:

- State historic preservation office
X Other state agency
- Federal agency
- Local government
- University
- Other
Specify Repository: Arkansas State Parks

=====
10. Geographical Data
=====

Acreage of Property: Less than one

UTM References: Zone Easting Northing Zone Easting Northing

Table with 4 columns: A, B, C, D. Values include 15, 508020, 3810470, and blank spaces.

See continuation sheet.

Verbal Boundary Description: See continuation sheet.
Beginning at a point on the southern edge of Lake Catherine State Park Cabin Access Road formed by the intersection of that edge with a perpendicular line that runs parallel to Cabin #1's western elevation and is located about 25 feet to the west, proceed south for 100 feet to the intersection with a perpendicular line running parallel to Cabin #1's southern elevation. Then proceed east for 100 feet to the intersection with a perpendicular line that runs parallel to Cabin #1's eastern elevation. Then proceed north for 100 feet to the intersection of a perpendicular line that runs along the southern edge of the Lake Catherine State Park Cabin Access Road. Then proceed west to the point of origin.

Boundary Justification: See continuation sheet.
This boundary includes all of the property historically associated with this resource.

=====
11. Form Prepared By
=====

Name/Title: Georganne Sisco, Graduate Student/Intern
Organization: Arkansas Historic Preservation Program Date: February 8, 1995
Street & Number: 1600 Tower Bldg, 323 Center St. Telephone: (501) 324-9880
City or Town: Little Rock State: AR ZIP: 72201

**United States Department of the Interior
National Park Service**

**National Register of Historic Places
Continuation Sheet**

Section number 7 Page 1

Summary

Cabin #1 at Lake Catherine State Park is a small, one-story Rustic cabin located on the southern end of the Lake Catherine State Park Cabin Area Access Road. Built by the Civilian Conservation Corps in 1941, it is an excellent example of the Rustic Resort style made popular during the 1930's. These cabins typically were made of materials indigenous to the area and were non-intrusive in the natural environment. The cabin was established as part of the guest accommodations for the park and continues to serve in that capacity. The cabin has not undergone any major structural changes and has a significant amount of original materials remaining. The cabin's appearance today is similar to what it would have been when the cabin was first built.

Elaboration

Cabin #1 at Lake Catherine State Park is a small, one-story Rustic cabin located on the southern end of the Lake Catherine State Park Cabin Area Access Road. Built by the Civilian Conservation Corps in 1941, it is an excellent example of the Rustic Resort style made popular during the 1930's. These cabins typically were made of materials indigenous to the area and were non-intrusive in the natural environment. The cabin was established as part of the guest accommodations for the park and continues to serve in that capacity. The cabin has not undergone any major structural changes and has a significant amount of original materials remaining. The cabin's appearance today is similar to what it would have been when the cabin was first built.

This structure is of frame construction and is covered with rough-hewn weatherboard. The cabin is a small rectangle, approximately 33 feet by 15 feet, with a northern projecting wing that is about 19 feet by 8 feet. The gabled roof is constructed of composition shingle and is not original; it was replaced during the 1970's. The siding is not original, but park personnel used siding similar to the original when replacing it. The foundation is made of stone; the rock placement is characteristic of CCC work. Also original to the cabin is the concrete slab located under the northern wing containing the kitchen and bathroom. There is a small porch off the front door, and the roof on that porch has been replaced. At one point, a door located on the northwest wing led into the kitchen; this door was located at a right angle to the current front door. The door into the kitchen was boarded up prior to 1976, but the stone ledge for the step remains. The brick patio in front of the cabin was not included in the blueprints, but was apparently added during the 1940's when additional work was done to the park. The stone

**United States Department of the Interior
National Park Service**

**National Register of Historic Places
Continuation Sheet**

Section number 7 Page 2

retaining wall and steps leading down to the cabin were built by the CCC.

The exterior end dressed stone chimney, made of stone indigenous to the area, is located on the east side of the cabin. All of the cabin's windows have been replaced with a double-hung, one-over-one pane arrangement. Board and batten was used to cover the areas around the scaled down windows. The original windows were a six-over-six arrangement. A screened-in porch, approximately 30 feet by 8 feet, runs nearly the full length of the cabin on the south side, facing out over the lake. At some point, the screens were taken down, but they have since been replaced. The porch ceiling beams are original, but the corner posts, porch roof, and floor decking have all been replaced. The stone pilings under the porch are original to the structure.

The interior of the cabin has a basic floor plan with a main room, bedroom, hall, kitchen and bathroom. This floor plan was used in very few Arkansas state parks, and it is the only one at Lake Catherine. The cabin's floor plan has been altered marginally. Original exposed beams still exist in the main room. The 8" tongue and groove shiplap in the main room is primarily original. When the two sets of French doors were taken out of the main room and replaced with a single door and window, smaller tongue and groove shiplap was used instead of the 8". Carpet covers the original flooring, which is pine. The shiplap in the hall and bedroom is new and is a much lighter color; it was replaced after a severe flood in 1990 and covers the original interior walls. The bathroom layout has not been altered, although the tile has been replaced.

The setting around the cabin remains much the same. Five rustic cabins are located on this road off the southern end of the lake. The appearance of these cabins has not altered much over the years, and they are excellent examples of the Rustic Resort style.

**United States Department of the Interior
National Park Service**

**National Register of Historic Places
Continuation Sheet**

Section number 8 Page 1

Summary

Criteria A and C, local significance

Cabin #1 at Lake Catherine State Park satisfies the National Register Criteria in several ways. The building is historically significant because of its association with the Civilian Conservation Corps' involvement in Arkansas social history, and also due to its role in the creation of outdoor public parks intended for recreation and leisure use. The cabin also qualifies because it is an intact, representative example of the Rustic Resort style of architecture popularized by the CCC. This cabin continues to serve the park in its original capacity--to accommodate overnight visitors to Lake Catherine State Park.

Elaboration

Cabin #1 at Lake Catherine State Park satisfies the National Register Criteria in several ways. The building is historically significant because of its association with the Civilian Conservation Corps' involvement in Arkansas social history, and also due to its role in the creation of outdoor public parks intended for recreation and leisure use. The cabin also qualifies because it is an intact, representative example of the Rustic Resort style of architecture popularized by the CCC. This cabin continues to serve the park in its original capacity--to accommodate overnight visitors to Lake Catherine State Park.

The land on which Lake Catherine State Park is located was donated to the state of Arkansas by Harvey C. Couch on August 22, 1935. The land was given on condition that the state build a state park there within three years; the parcel contained over 2,000 acres. Plans for the park's development were actually drawn up before the land was donated in 1935, but construction did not begin until several years later. The State Park Commission was anxious to establish a state park in southwestern Arkansas, so the people in that region would have a place for recreation and relaxation.

Lake Catherine was built by Civilian Conservation Corps Company 3777; their camp was located near the park. Young men between the ages of 18 and 25 who were out of work could enlist in the CCC, and be assured of a steady job, a monthly wage, a steady food supply, lodging, and clothes to wear. The CCC provided many young men in this country with a job and some hope during the Depression. The CCC camp near Lake Catherine was one of the strongest in the state and was also one of the last to be disbanded as World War II approached.

The state ran the park at first, but leased it to the Army Redistribution Center, located in Hot Springs, in 1944. The Army used the lodge in the park to house recuperating soldiers returning from World War II. The Army and Navy Hospital took over the park after that. With both

**United States Department of the Interior
National Park Service**

**National Register of Historic Places
Continuation Sheet**

Section number 8 Page 2

military groups, the overnight cabins continued to be available to the general public. In late 1946, the Army lost its lease on the park, and the State granted operation of the park to the Young Democratic Clubs of Arkansas. Park operation reverted to the State five years later.

The Rustic Resort style is based on designs from Adirondack camps; this architectural movement began in the early twentieth century but was most popular between the years 1933-1942. The movement ended following major United States involvement in World War II, and the labor force that had been in such abundance during the 1930's dwindled rapidly in the early 1940's. The style was very labor-intensive; everything was done by hand and took much longer to do. It was important for all structures built in the parks during this time period to blend in with the natural landscape; the plans for these structures also utilized local materials, particularly timber and stone.

Cabin #1, the first cabin built at Lake Catherine, was begun in 1940 and finished by March 1941. Its design is unique to Lake Catherine State Park and rarely found in other Arkansas state parks. The cabin was intended for temporary residential use for overnight accommodations for park visitors; this use has not changed although park ownership has changed since the park's creation. This was the first of many overnight cabins planned for Lake Catherine State Park and was part of the original Master Plan development for the facility to be administered as a public park by the state of Arkansas.

The building erected by the men of the CCC at Lake Catherine was intended as overnight accommodations for park guests. It continues to function in this capacity. Cabin #1 has undergone few changes, retaining much of its original character. The immediate area around the Rustic cabins at Lake Catherine State Park continues to evoke the harmonious, non-intrusive setting that was intended when the park was built. For these reasons, and by virtue of its direct associations with the Civilian Conservation Corps, the Lake Catherine Cabin #1 is locally eligible under Criteria A and C.

United States Department of the Interior
National Park Service

National Register of Historic Places Continuation Sheet

Section number 9 Page 1

Bibliography

NEWSPAPERS

"Army Reluctantly releases Lake Catherine Lodge Back to State," Hot Springs Sentinel-Record, October 13, 1946.

"H. C. Couch Gives Deed to Park at Lake Catherine," Malvern Daily Record, August 23, 1935.

"Lake Catherine Holds Open House," Malvern Daily Record, May 11, 1941

"Lake Catherine State Park Rapidly Adding to Facilities For Vacationists, Fishermen," Hot Springs Sentinel-Record, February 1943.

"Park for Veterans to Open May 1," Hot Springs Sentinel-Record, April 10, 1947.

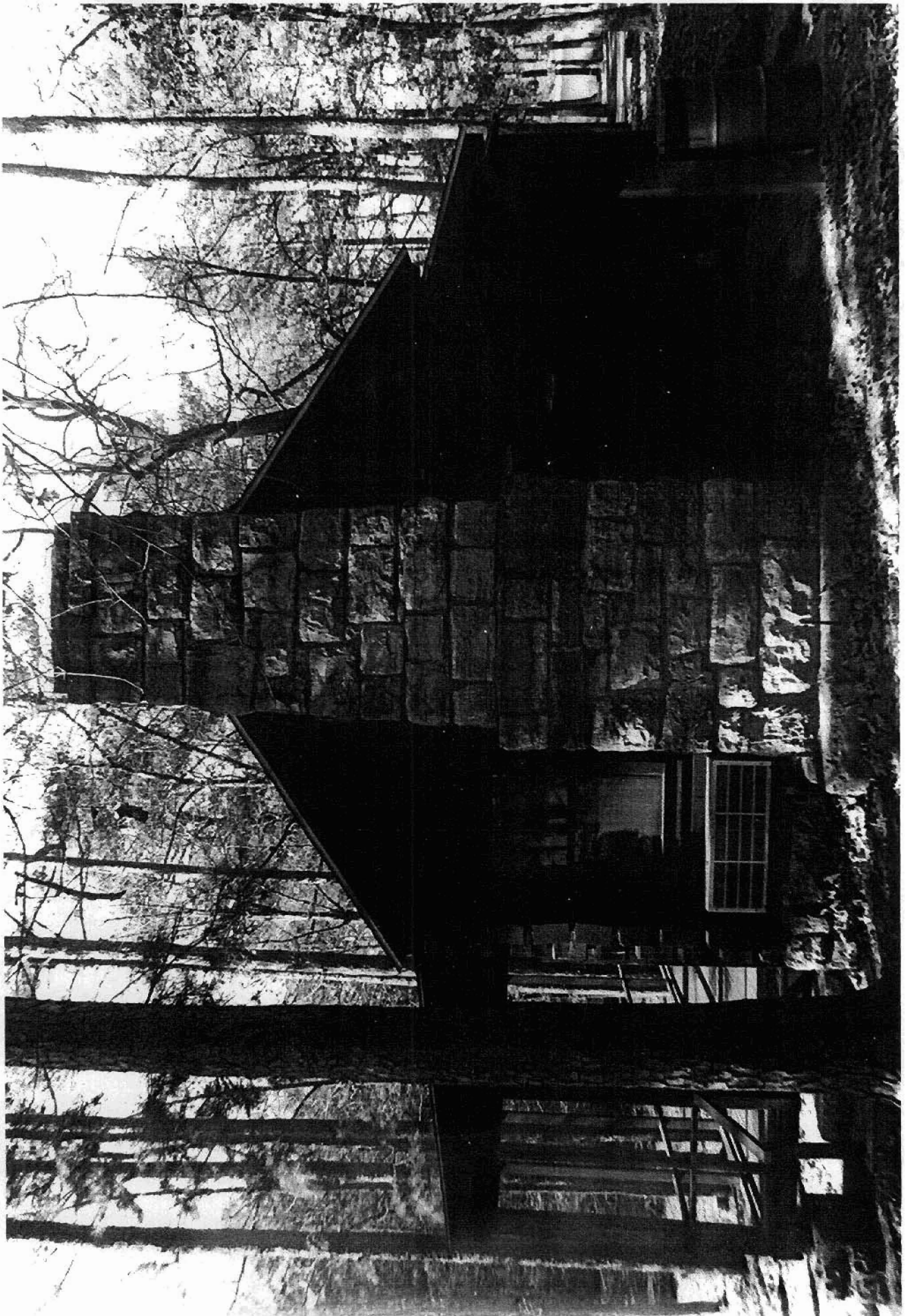
"Public to Have 'Pre-Opening' View of Lake Catherine Park," Hot Springs Sentinel-Record, March 23, 1941.

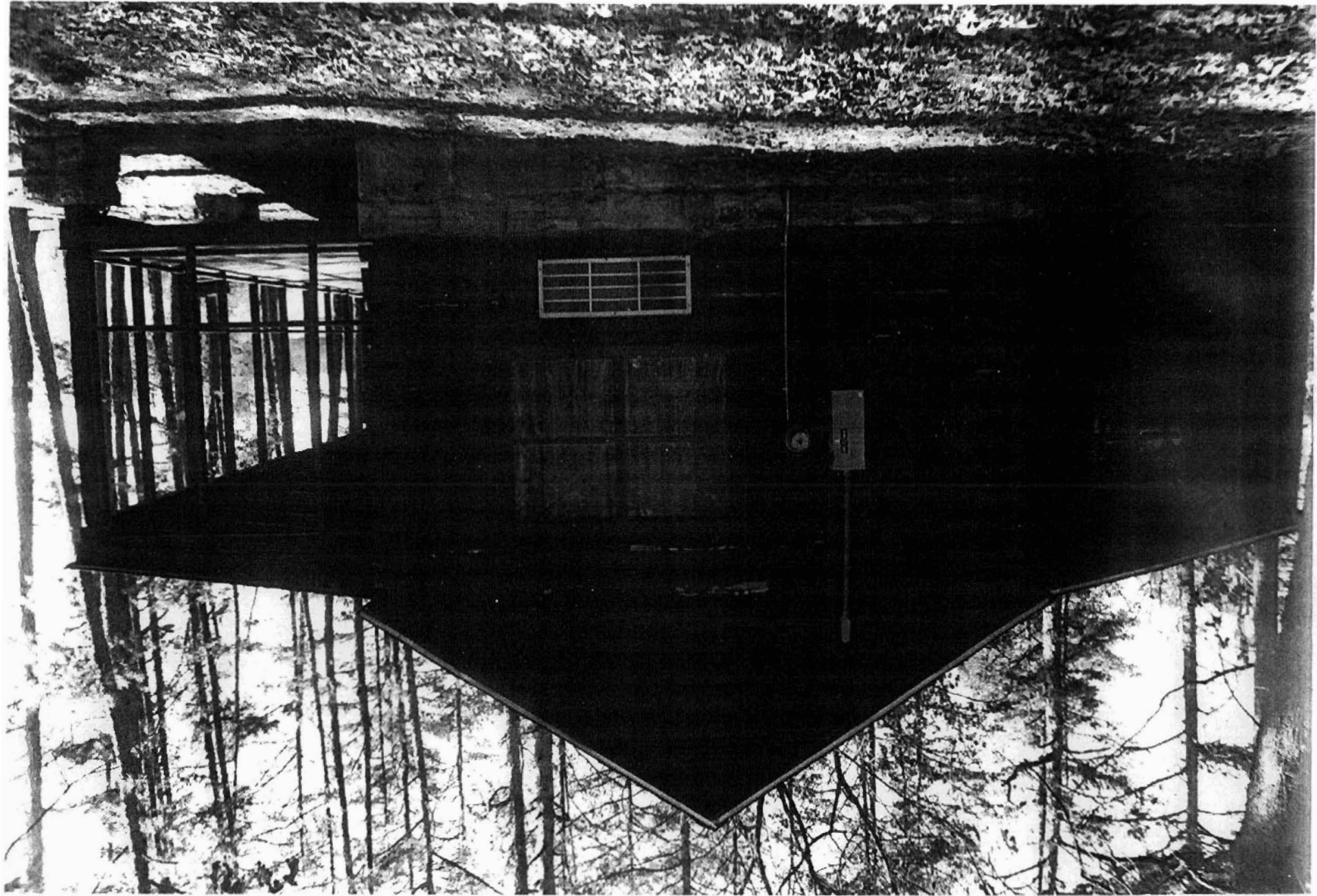
"Work on Lake Catherine State Park Starts October 1," Malvern Daily Record, August 24, 1937.

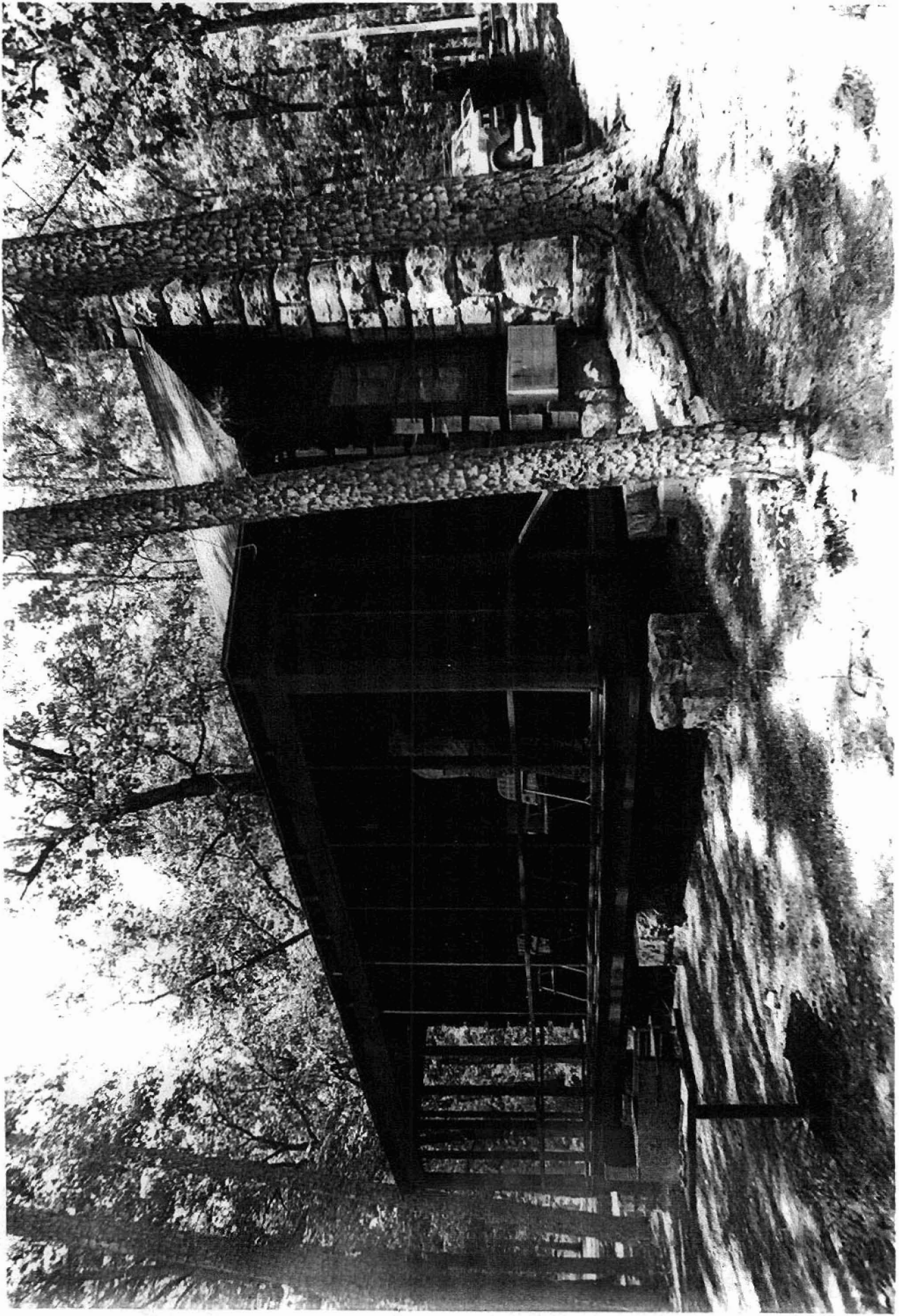
MISCELLANEOUS

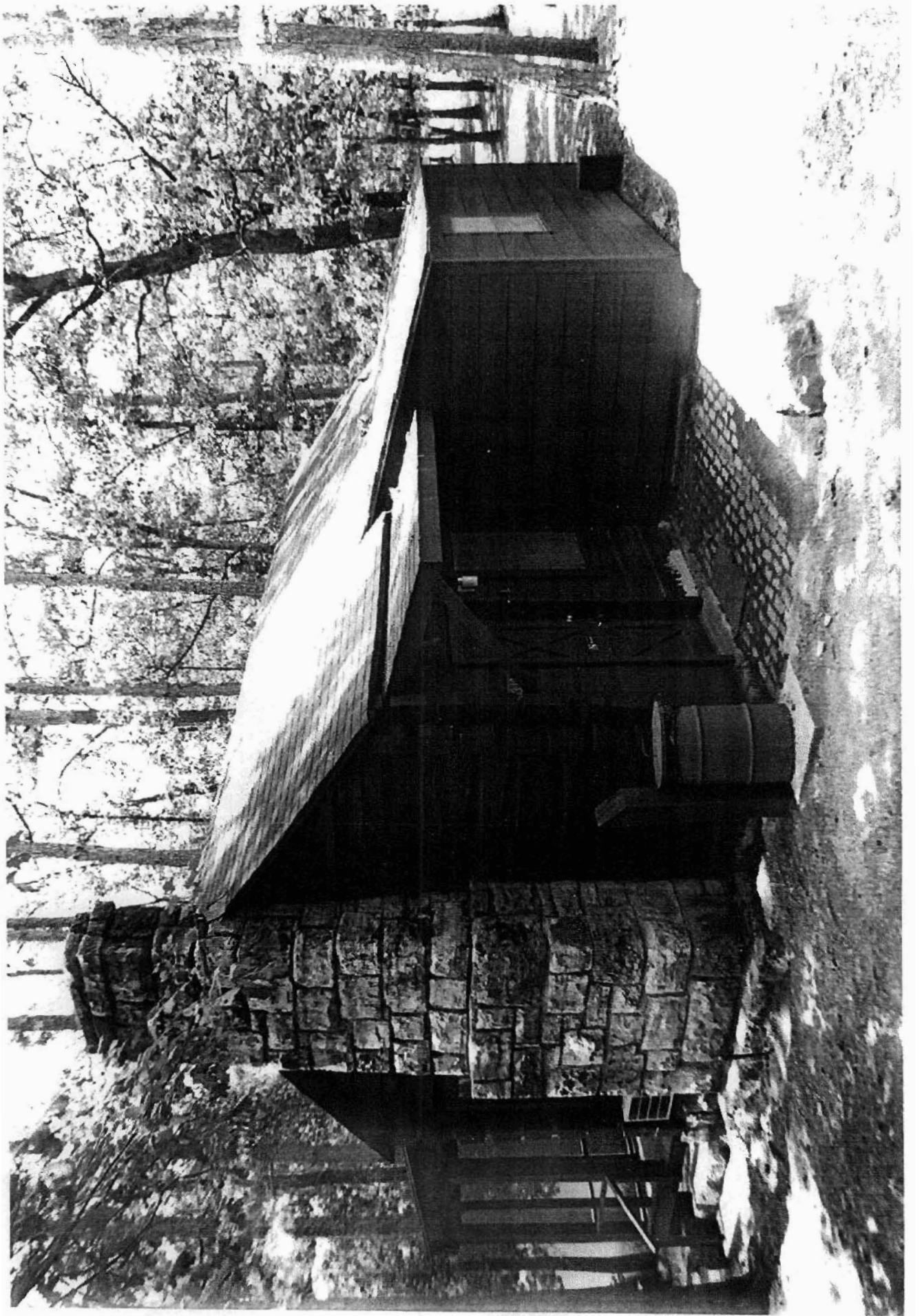
Burgraff, Frank and Karen Rollet. Manmade Elements in Natural Settings: The CCC in Arkansas. (1989).

Long, Nancy W. "History of Lake Catherine State Park." Paper, University of Arkansas-Little Rock, 1993.













Cabin #1
Lake Catherine
State Park Cabin
Area Access Road
Shorewood Hills
Hot Spring County
AR
15/508070/3810470

MAGNET 1 & 2
MALVERN 10 P
3812

11
4 MI TO U.S. 270
(MALVERN NORTH)

3009

25'

ROCKPORT

ROAD

3

438

396

Bayou

Dec

6

MOUNTAIN

NARROW

STATE PARK

LAKE CATHERINE

Shorewood Hills

Jones Mills

OUACHITA RIVER

Creek

Figure Bay

Stinger

CATHERINE

30

24

21

20

19

18

17

16

15

14

13

12

11

10

9

8

7

6

5

4

3

2

1

0

-1

-2

-3

-4

-5

-6

-7

-8

-9

-10

-11

-12

-13

-14

-15

-16

-17

-18

-19

-20

-21

-22

-23

-24

-25

-26

-27

-28

-29

-30

-31

-32

-33

-34

-35

-36

-37

-38

-39

-40

-41

-42

-43

-44

-45

-46

-47

-48

-49

-50

-51

-52

-53

-54

-55

-56

-57

-58

-59

-60

-61

-62

-63

-64

-65

-66

-67

-68

-69

-70

-71

-72

-73

-74

-75

-76

-77

-78

-79

-80

-81

-82

-83

-84

-85

-86

-87

-88

-89

-90

-91

-92

-93

-94

-95

-96

-97

-98

-99

-100