

United States Department of the Interior
National Park Service

National Register of Historic Places
Inventory—Nomination Form

For NPS use only
received
date entered

Continuation sheet 156

Item number 1,2,4,6, & 10

Page 1

INDIVIDUAL DATA SHEET

General Description

Code: HS-033

Congressional District: Fourth

Name: Clark House
Address: 1324 South Main
Malvern, Arkansas
County: Hot Spring

Current Owner: New Alpha, Inc.
B. Winston, Director
Address: 1324 South Main
Malvern, Arkansas 72104

Architectural Information

Architectural Firm: Charles L. Thompson

Date of Construction: 1916

Stylistic Influence: Craftsman

Original Use: Residence

Present Use: Residence

Geographical Information

UTM Reference: 15 517625/3801525

Acreage: Less than one

Verbal Boundary Description: City Blocks
Block 123, Lot 4 Lunn & Hill Survey

Condition

Excellent
 Good
 Fair

Deteriorated
 Ruins
 Unexposed

Unaltered
 Altered

United States Department of the Interior
National Park Service

National Register of Historic Places Inventory—Nomination Form

For NPS use only
received
date entered

Continuation sheet 157

Item number 7 & 8

Page 2

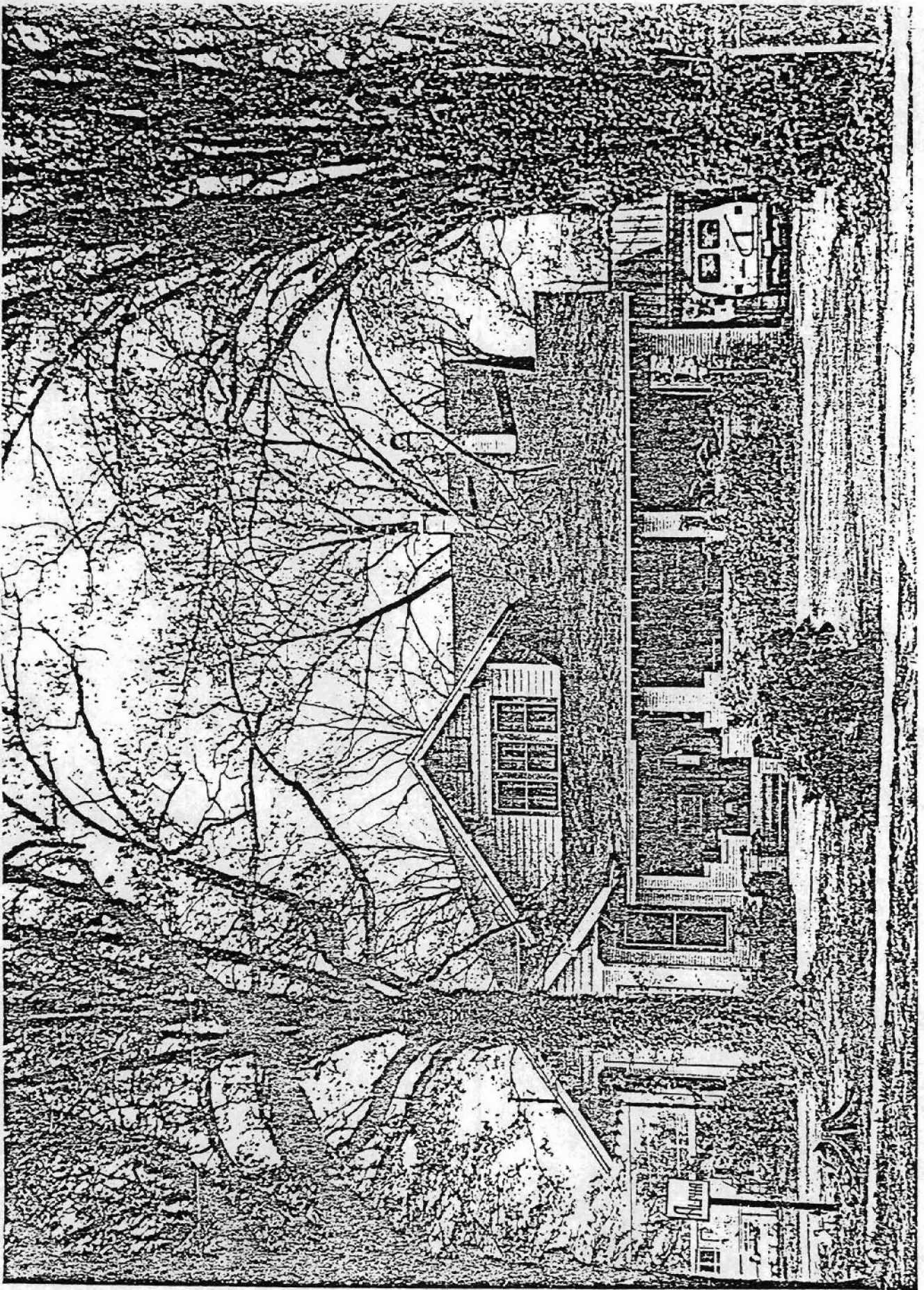
Code: HS-033 (1324 S. Main, Malvern, AR)

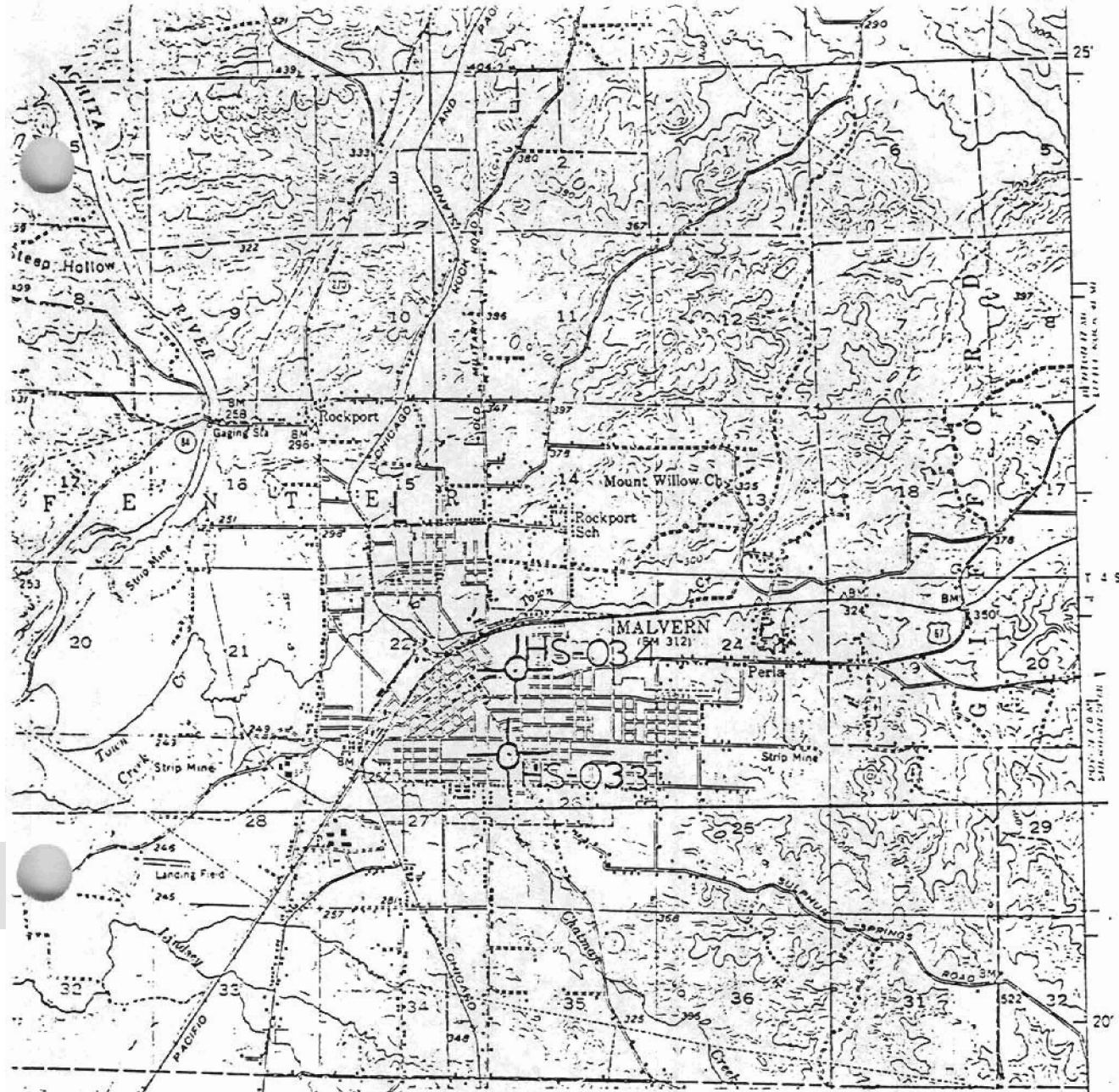
Physical Description

A complex roofscape and asymmetrical massing characterize this 1916 house designed by Charles L. Thompson located on a large, level lot surrounded by huge trees. The one-and-a-half-story structure has a high gable end roof from which project a two-story hipped roof wing containing a sleeping porch, a large cross gable located over the entrance, and a chamfered one-story bay at the front of the house. The roof swoops down low to cover the long porch which extends from the chamfered bay across the front elevation. Like many of Thompson's porches, much privacy is afforded here by the roof overhang and the low walls of the porch which are framed by large brick piers. A porte-cochere with similar brick forms an attached structure at the end of the porch, somewhat recessed from the front elevation. Wide weatherboards line the upper portion of the house, narrow ones below. Exaggerated large brackets and exposed rafters contribute to the Craftsman quality of the house. Second story windows appearing in front cross gable are sash windows of six-over-one lights. Other windows are plate glass.

Statement of Significance

The Clark House in Malvern, Arkansas, was designed by Charles L. Thompson in 1916. In an unusually eclectic approach, the house combines Victorian qualities--here evident in the complex roofscape and the bay window--with those of the Craftsman style. The result is an unusual house with low horizontal lines of the porch roof offsetting the more picturesque bay window and the tall central dormer window. Again, the firm's design prominently features a large and inviting front porch offering shade and privacy to residents of this small town in southern Arkansas. A porte-cochere on the northwest elevation is original to Thompson's design.





STRUCTURES IN ARKANSAS REPRESENTED BY THE
 CHARLES L. THOMPSON DESIGN COLLECTION -
 A THEMATIC GROUP

Malvern, Hot Spring Co., Arkansas

Quadrangle Name: Malvern, Ark.

Scale: 1:62,500

UTM Reference: HS-033 15 517625/3801525
 HS-034 15 517725/3802325

