

United States Department of the Interior
National Park Service

National Register of Historic Places
Continuation Sheet

Section number 7 Page 1

Summary

The Oak Grove School is a single-story, four-room structure constructed by the Works Progress Administration in 1938. The building is typical of WPA-constructed schoolhouses and features some Craftsman influences.

Elaboration

The Oak Grove School is a single-story, four-room schoolhouse constructed by the WPA in 1938. The plan is rectangular and consists of a continuous concrete foundation supporting novelty-sided, wood-frame walls covered by a composition-shingled, gable-on-hipped roof. The rafters are exposed underneath the eaves in the traditional Craftsman style. There are two central interior chimneys.

The northern elevation features a central gable projecting porch supported by two square columns resting on a raised concrete platform. Two separate doors with six-pane transoms provide access to different rooms. Both were originally classrooms, but now the eastern door leads to the sanctuary which was created from the two eastern classrooms. There are no windows in the northern elevation.

The eastern elevation is fenestrated by four sets of tripled nine-over-nine double-hung windows symmetrically arranged. An overhanging shed porch shields an entrance at the southern end of this elevation. The southern elevation is blank.

The western elevation contains identical lighting arrangements as the eastern elevation with the addition of a projecting gable porch in the center. This porch likewise rests on two square columns and is highlighted by double doors with a twelve-pane transom.

Interior modifications have been minor considering the conversion to a church. The northwestern classroom is virtually unaltered and retains the original blackboard and the built-in coat closet. A six-pane pivot window located on the interior wall to enhance ventilation remains, as does the original door trim and six-pane transom of the doorway entering the southwestern classroom. This room has been divided into multiple rooms for Sunday School. The northeastern and southeastern classrooms were combined to form the sanctuary, and colored glass replaced the original clear window panes. The southeastern classroom originally contained a stage at the southern end.

Although the interior has undergone some alterations in its conversion to a church, one room remains as an excellent representative of a 1930's era classroom. The exterior appears virtually unaltered since its construction in 1938.

United States Department of the Interior
National Park Service

National Register of Historic Places
Continuation Sheet

Section number 8 Page 1

Summary

Criterion C, local significance

The Oak Grove School, located six miles east of Sheridan in Grant County, is being nominated under Criterion C with local significance as the best example of a Works Progress Administration-constructed schoolhouse in the area. The four-room structure operated as a public school from 1938 until the 1949-1950 school year.

Elaboration

The Oak Grove Community is located six miles east of Sheridan in Washington Township. Originally located in Jefferson County, the community has changed its traditional boundaries over the years and was probably sparsely inhabited prior to the creation of Grant County in 1869. Although Oak Grove was never an established town or even a well-defined community, generations of residents constructed churches, mills, and businesses to accommodate their needs.

In 1938, several schools in the area were consolidated to form School District #24. Because of its geographical location in the center of the new district, the Oak Grove Community was chosen as the site for the new school. The Works Progress Administration employed local craftsmen for the construction of the new four-room schoolhouse. On completion in 1938, the *Sheridan Headlight* mentioned the new building's "modern" interior furnishings and described the new structure as "a credit to the community and to the State of Arkansas." The new schoolhouse was dedicated during a special program in March 1939.

As evidence of the importance of the new school building to the community, and as a reflection of the growth in the region, J. A. Waddell, Grant County Judge from 1894 to 1898 and from 1916 to 1919, recounted:

I am glad to see the improvements here. At the close of the Civil War, there were only two settlements on the road from Pine Bluff to Oak grove [sic] and only a few houses visable [sic]. Today (1939), all the way are nice white houses as far as one can see on each side of the road. Shows you how fast the state has grown in all sections. Hurrah for Grant County!

The new WPA structure did not last long as a schoolhouse, however. In 1949, the school district was consolidated with the Sheridan school district. Since that date, the structure has been utilized as the Center Grove Methodist Church. A few modest interior modifications were made to effect this conversion. The glass window panes on the eastern side of the structure were replaced with colored glass; however, the window sash and muntins were not disturbed. The exterior of the building is virtually unchanged and appears as it did in 1938.

**United States Department of the Interior
National Park Service**

National Register of Historic Places Continuation Sheet

Section number 8 Page 2

The Oak Grove School is significant under Criterion C as the best example of a WPA constructed frame schoolhouse in the area. There are no other extant WPA constructed frame school buildings in Grant County. The structure is well-maintained and an excellent representative of the era in which it was built.

United States Department of the Interior
National Park Service

**National Register of Historic Places
Continuation Sheet**

Section number 9 Page 1

Bibliography

Goolsby, Elwin L. and Kay M. *Golden Memories: A Photographic Album of Grant County*. Sheridan: Grant County Museum, 1986.

Goolsby, Elwin L. *Our Timberland Home: A History of Grant County*. Little Rock: Rose Publishing Company, 1984.

Grant County Museum Archives/Vertical File materials.

Grant County School Board records, 1923-38.

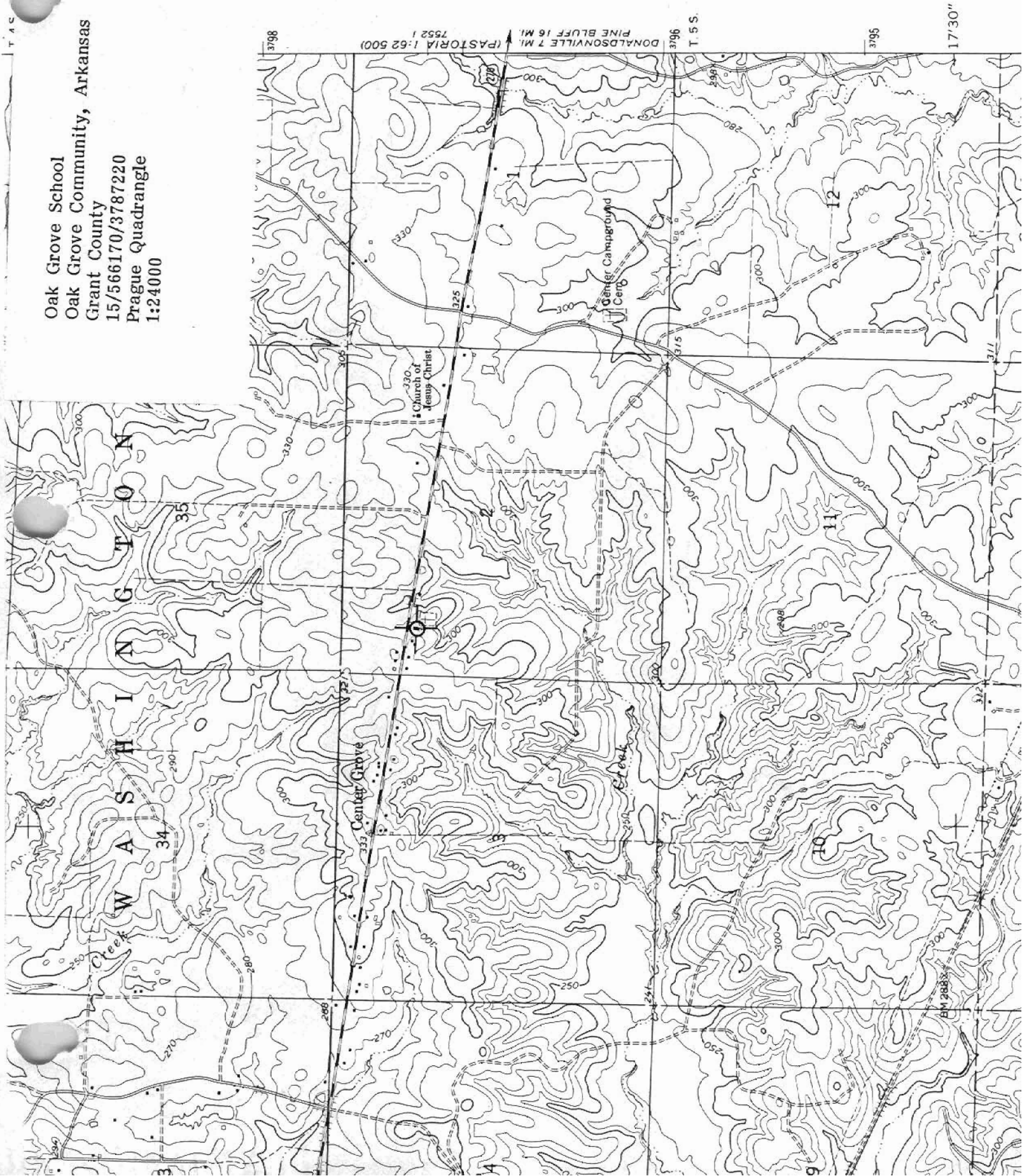
Grant County Clerk's Office records.

Interview or communication with Brenda Hall and Elwin Goolsby.

Sheridan Headlight. March 16, 1922; April 20, 1922; September 7, 1922; September 28, 1922; September 5, 1927; February 2, 1939 (Booster Edition); March 29, 1939; and June 2, 1949.

Sheridan High School Annual, 1950.

Oak Grove School
Oak Grove Community, Arkansas
Grant County
15/566170/3787220
Prague Quadrangle
1:24000



TAC

17'30"

BM 2883

9. Major Bibliographical References

Previous documentation on file (NPS):

- preliminary determination of individual listing (36 CFR 67) has been requested
- previously listed in the National Register
- previously determined eligible by the National Register
- designated a National Historic Landmark
- recorded by Historic American Buildings Survey # _____
- recorded by Historic American Engineering Record # _____

See continuation sheet

Primary location of additional data:

- State historic preservation office
 - Other State agency
 - Federal agency
 - Local government
 - University
 - Other
- Specify repository: _____

10. Geographical Data

Acres of property Less than one

UTM References

A 15 566170 3797220
 Zone Easting Northing

C _____

B _____
 Zone Easting Northing

D _____

See continuation sheet

Verbal Boundary Description Beginning at the intersection of the southern edge of Highway 270 and the line formed by the eastern elevation of the building, proceed southerly along said line to the point formed by the intersection of said line and the line formed by the southern elevation of the building; thence proceed westerly to a point formed by the intersection of said line and the line formed by the western elevation of the building; thence proceed northerly to a point formed by the intersection of said line and the southern edge of Highway 270; thence proceed easterly to the point of beginning.

See continuation sheet

Boundary Justification

This boundary includes all the property historically associated with this resource.

See continuation sheet

11. Form Prepared By

name/title Patrick Zollner/National Register Historian

organization Arkansas Historic Preservation Program date 4/10/91

street & number 225 East Markham, Suite 300 telephone (501) 324-9346

city or town Little Rock state Arkansas zip code 72201

8. Statement of Significance

Certifying official has considered the significance of this property in relation to other properties:

nationally statewide locally

Applicable National Register Criteria A B C D

Criteria Considerations (Exceptions) A B C D E F G

Areas of Significance (enter categories from instructions)
Architecture

Period of Significance
1938

Significant Dates
N/A

Cultural Affiliation
N/A

Significant Person
N/A

Architect/Builder
WPA

State significance of property, and justify criteria, criteria considerations, and areas and periods of significance noted above.

