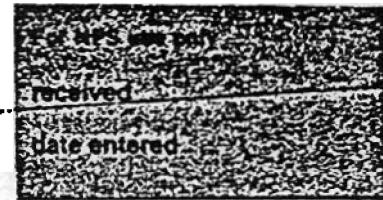


United States Department of the Interior
National Park Service

National Register of Historic Places
Inventory—Nomination Form



Continuation sheet 51 Item number 1, 2, 4, 6, & 10 Page 1

INDIVIDUAL DATA SHEET

General Description

Code: GA-029	Congressional District: Third
Name: Riviera Hotel	Current Owner: Bosna, Inc.
Address: 719 Central Hot Springs, Arkansas	Address: 1008 Woodlawn Hot Springs, Arkansas 71901
County: Garland	

Architectural Information

Architectural Firm: Thompson, Sanders and Ginocchio

Date of Construction: ca. 1930	Stylistic Influence: Chicago School
Original Use: Hotel	Present Use: Hotel

Geographical Information

UTM Reference: 15 495040/3818400 Acreage: Less than one

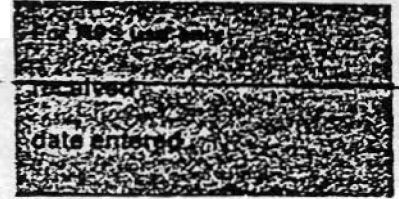
Verbal Boundary Description: Hot Springs Reservation
Block 129, Lot 3, 4, and pt. 5

Condition

<input type="checkbox"/> Excellent	<input type="checkbox"/> Deteriorated	<input checked="" type="checkbox"/> Unaltered
<input checked="" type="checkbox"/> Good	<input type="checkbox"/> Ruins	<input type="checkbox"/> Altered
<input type="checkbox"/> Fair	<input type="checkbox"/> Unexposed	

United States Department of the Interior
National Park Service

National Register of Historic Places
Inventory—Nomination Form



Continuation sheet 52

Item number 7 & 8

Page 2

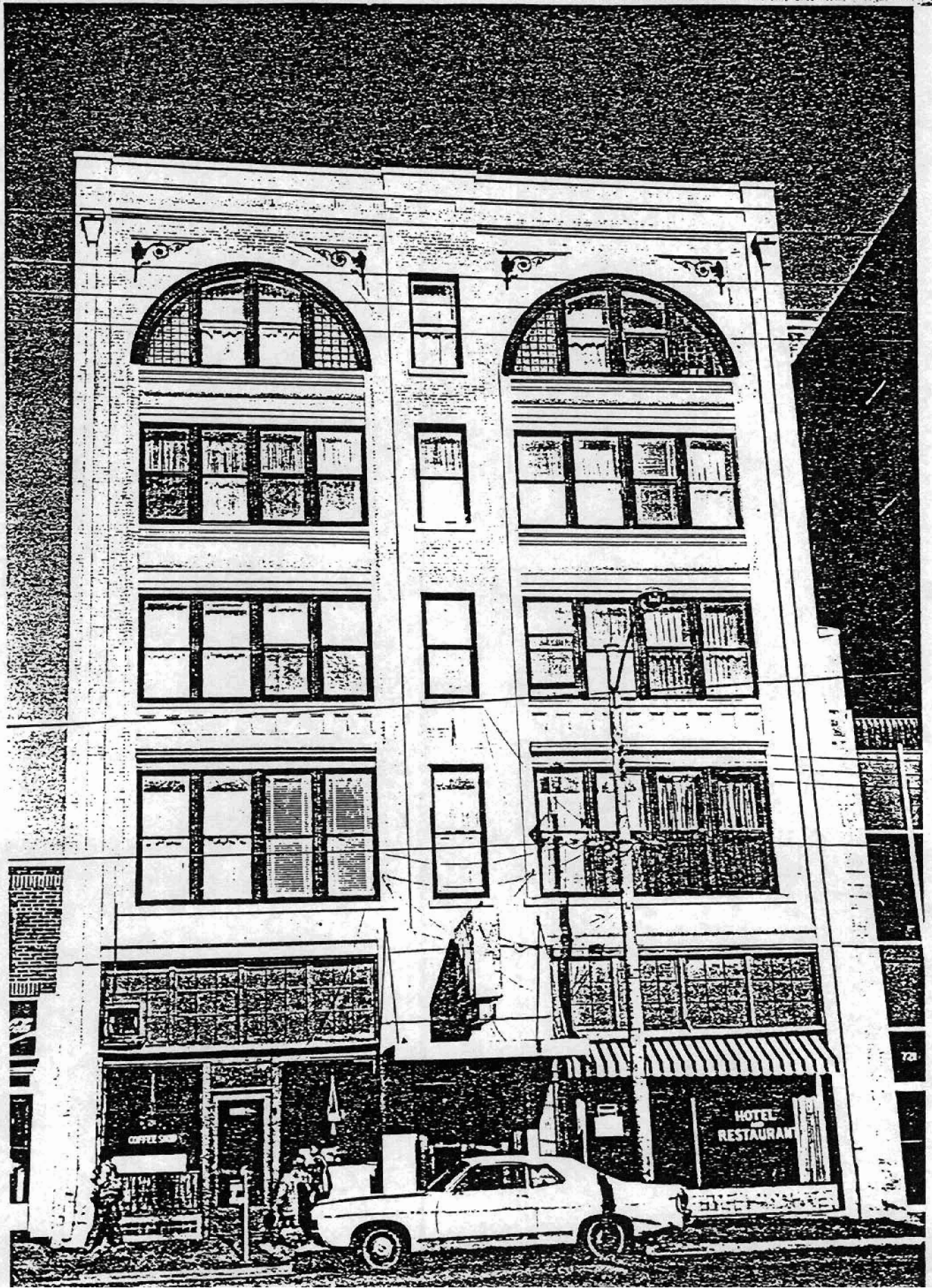
Code: GA-029 (719 Central., Hot Springs, AR)

Physical Description

Echoes of the Chicago School commercial buildings are present in the organization of this five-story commercial building within two tall arches flanking a plain central panel articulated by single windows. This tall attached building on Hot Spring's main street is faced with brick, which forms the four-story arches and the simple cornice. Metal panels form the horizontal insets between the bands of windows in these arches. Hints of a Queen Anne-like decorative approach are visible at the tops of the arches in the carved foliate motifs and the multi-paned windows. The lower level features large plate glass windows with multi-paned transoms. The windows on the next three stories are plate glass sash windows appearing in banks of four; those at the top are paired with multi-paned arched sidelights.

Statement of Significance

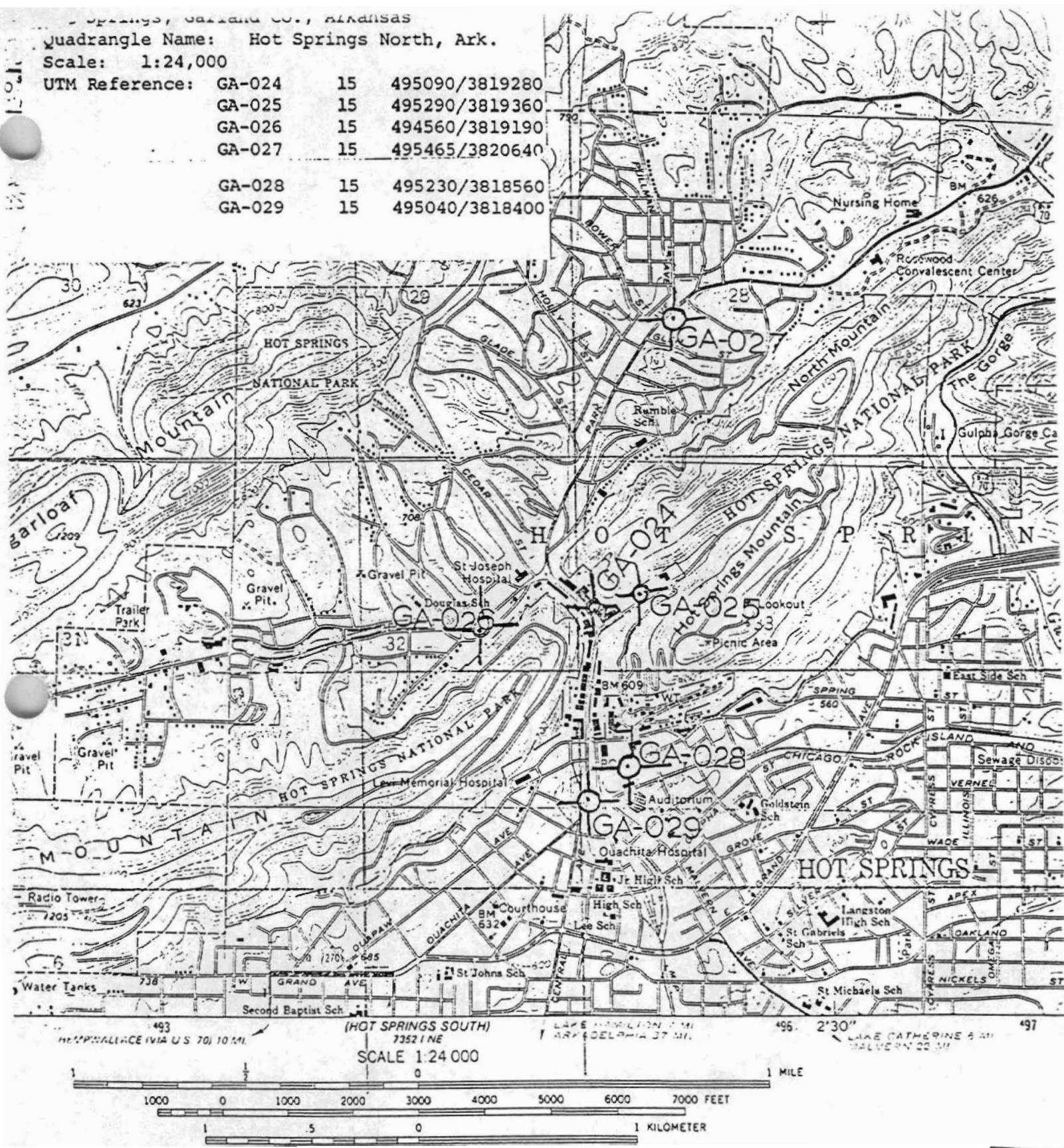
The Riviera Hotel on Hot Springs' Central Avenue was designed by the Thompson, Sanders and Ginocchio Firm ca. 1930. Located on the major business avenue and thoroughfare in the city, this hotel was built during one of the peak periods in the popularity of the resort town. Its importance to the historic streetscape is significant in a city oriented to visitors. An unusual organization of a tall building within arches echoes the Chicago School of Architecture. Its significance to the streetscape of Hot Springs and uniqueness to the collection of drawings by Thompson and his associates contribute to the historic value of the Riviera Hotel.



Hot Springs, Garland Co., ARKANSAS
 Quadrangle Name: Hot Springs North, Ark.

Scale: 1:24,000

UTM Reference:	GA-024	15	495090/3819280
	GA-025	15	495290/3819360
	GA-026	15	494560/3819190
	GA-027	15	495465/3820640
	GA-028	15	495230/3818560
	GA-029	15	495040/3818400



CONTOUR INTERVAL 20 FEET
 NATIONAL GEODETIC VERTICAL DATUM OF 1929

THIS MAP COMPLIES WITH NATIONAL MAP ACCURACY STANDARDS
 FOR SALE BY U.S. GEOLOGICAL SURVEY, DENVER, COLORADO 80225, OR RESTON, VIRGINIA 22092
 AND ARKANSAS GEOLOGICAL COMMISSION, LITTLE ROCK, ARKANSAS 72204
 A FOLDER DESCRIBING TOPOGRAPHIC MAPS AND SYMBOLS IS AVAILABLE ON REQUEST

