

Quapaw-Prospect Historic District

Name of Property

Garland County, Arkansas

County and State

NPS Form 10-900  
(Oct. 1990)

NK Listed: 3-08-02

OMB No. 10024-0018

United States Department of the Interior  
National Park Service

## National Register of Historic Places Registration Form

This form is for use in nominating or requesting determinations for individual properties and districts. See instructions in *How to Complete the National Register of Historic Places Registration Form* (National Register Bulletin 16A). Complete each item by marking "x" in the appropriate box or by entering the information requested. If an item does not apply to the property being documented, enter "N/A" for "not applicable." For functions, architectural classification, materials, and areas of significance, enter only categories and subcategories from the instructions. Place additional entries and narrative items on continuation sheets (NPS Form 10-900a). Use a typewriter, word processor, or computer, to complete all items.

### 1. Name of Property

historic name Quapaw-Prospect Historic District

other names/site number GA0154 - GA0472

### 2. Location

street & number An area roughly bounded by Quapaw & Prospect Avenue  not for publication

city or town Hot Springs  vicinity

state Arkansas code AR county Garland code 051 zip code 71901

### State/Federal Agency Certification

As the designated authority under the National Historic Preservation Act, as amended, I hereby certify that this  nomination  request for determination of eligibility meets the documentation standards for registering properties in the National Register of Historic Places and meets the procedural and professional requirements set for in 36 CFR Part 60. In my opinion, the property  meets  does not meet the National Register criteria. I recommend that this property be considered significant  nationally  statewide  locally. (See continuation sheet for additional comments.)

Signature of certifying official/Title

Date

Arkansas Historic Preservation Program

State or Federal agency and bureau

In my opinion, the property  meets  does not meet the National Register criteria. ( See Continuation sheet for additional comments.)

Signature of certifying official/Title

Date

State or Federal agency and bureau

### 4. National Park Service Certification

I hereby certify that the property is:

entered in the National Register.

See continuation sheet

determined eligible for the National Register.

See continuation sheet

determined not eligible for the National Register.

removed from the National Register.

other, (explain): \_\_\_\_\_

Signature of the Keeper

Date of Action

\_\_\_\_\_  
\_\_\_\_\_  
\_\_\_\_\_

**Classification**

**Ownership of Property**  
(Check as many boxes as apply)

- private
- public-local
- public-State
- public-Federal

**Category of Property**  
(Check only one box)

- building(s)
- district
- site
- structure
- object

**Number of Resources within Property**  
(Do not include previously listed resources in count.)

Contributing	Noncontributing	
135	94	buildings
		sites
		structures
		objects
135	94	Total

**Name of related multiple property listing**  
(Enter "N/A" if property is not part of a multiple property listing.)

N/A

**Number of Contributing resources previously listed in the National Register**

4

**6. Function or Use**

**Historic Functions**

(Enter categories from instructions)

DOMESTIC: single dwelling, multiple dwelling

RELIGION: religious facility

HEALTH CARE: hospital

**Current Functions**

(Enter categories from instructions)

DOMESTIC: single dwelling, multiple dwelling

RELIGION: religious facility

HEALTH CARE: hospital

**7. Description**

**Architectural Classification**

(Enter categories from instructions)

LATE VICTORIAN: Queen Anne, Eastlake, Italianate, Gothic Revival

Renaissance Revival

LATE 19<sup>TH</sup> & 20<sup>TH</sup> CENTURY REVIVALS: Classical Revival, Tudor

(English) Revival, Mission/Spanish Colonial (Mediterranean) Revival,

LATE 19<sup>TH</sup> & 20<sup>TH</sup> CENTURY AMERICAN MOVEMENTS: Commercial

Style, Bungalow/Craftsman

OTHER: Exotic Revivals, Post WWII (Minimal Traditional), Early Ranch,

Plain/Traditional

**Materials**

(Enter categories from instructions)

foundation BRICK, STONE

walls WOOD: weatherboard, BRICK:

STUCCO

roof ASBESTOS, TERRA COTTA

METAL

other BRICK, STONE

**Narrative Description**

(Describe the historic and current condition of the property on one or more continuation sheets.)

**SEE CONTINUATION SHEETS.**

Statement of Significance

Applicable National Register Criteria

(Mark "x" in one or more boxes for the criteria qualifying the property for National Register listing.)

- A Property is associated with events that have made a significant contribution to the broad patterns of our history.
B Property is associated with the lives of persons significant in our past.
C Property embodies the distinctive characteristics of a type, period, or method of construction or represents the work of a master, or possesses high artistic values, or represents a significant and distinguishable entity whose components lack individual distinction.
D Property has yielded, or is likely to yield, information important in prehistory or history.

Criteria Considerations

(Mark "x" in all the boxes that apply.)

Property is:

- A owned by a religious institution or used for religious purposes.
B removed from its original location.
C a birthplace or grave
D a cemetery.
E a reconstructed building, object, or structure.
F a commemorative property
G less than 50 years of age or achieved significance within the past 50 years.

Levels of Significance (local, state, national)

LOCAL

Areas of Significance (Enter categories from instructions)

ARCHITECTURE

Period of Significance

1890-1951

Significant Dates

Significant Person (Complete if Criterion B is marked)

N/A

Cultural Affiliation (Complete if Criterion D is marked)

N/A

Architect/Builder

Robert Higgins; E.B. Mooney

Narrative Statement of Significance

(Explain the significance of the property on one or more continuation sheets.)

SEE CONTINUATION SHEETS.

Quapaw-Prospect Historic District  
Name of Property

Garland County, Arkansas  
County and State

**9. Major Bibliographical References**

**Bibliography**

(Cite the books, articles, and other sources used in preparing this form on one or more continuation sheets.)

**Previous documentation on file (NPS):**

- preliminary determination of individual listing (36 CFR 67) has been requested
- previously listed in the National Register
- Previously determined eligible by the National Register
- designated a National Historic Landmark
- recorded by Historic American Buildings Survey # \_\_\_\_\_
- recorded by Historic American Engineering Record # \_\_\_\_\_

**Primary location of additional data:**

- State Historic Preservation Office
- Other State Agency
- Federal Agency
- Local Government
- University
- Other

Name of repository: \_\_\_\_\_

**10. Geographical Data**

Acreage of Property 109.46 Acres

**UTM References**

(Place additional UTM references on a continuation sheet.)

A	<u>15</u>	<u>495040</u>	<u>3818820</u>
	Zone	Easting	Northing
B	<u>15</u>	<u>495020</u>	<u>3818420</u>

C	<u>15</u>	<u>494000</u>	<u>3817530</u>
	Zone	Easting	Northing
D	<u>15</u>	<u>493200</u>	<u>3817540</u>

See continuation sheet

**Verbal Boundary Description**

(Describe the boundaries of the property on a continuation sheet.)

Beginning at a point on the rear, northern property lines of buildings along Prospect Avenue at the intersection of Prospect and Grand Avenue, proceed northeast thirteen blocks to the northeast property line of 216 Court. Then proceed one block southeast along the northwestern curb line of Court to the eastern property line of 226 Prospect. Then proceed one block southwest to the western curb line of the 200 block of Quapaw Avenue at the intersection of Quapaw and Prospect. The boundary crosses Quapaw to the southeastern curb line and proceeds nine blocks southeast along the rear property lines of properties along Quapaw.

**Boundary Justification**

(Explain why the boundaries were selected on a continuation sheet.)

This boundary includes 230 properties, constructed between the 1890s and 19050s, which were historically associated with this area that retain the greatest amount of integrity.

**11. Form Prepared By**

name/title Marty Dalby (Edited by Kara Mills Oosterhous, AHPP)  
organization Arkansas Historic Preservation Program date \_\_\_\_\_  
street & number 323 Center Street, 1500 Tower Building telephone (501) 324-9787  
city or town Little Rock state Arkansas zip code 72201

**Additional Documentation**

Submit the following items with the completed form:

Continuation Sheets

**Maps**

- A USGS map (7.5 or 15 minute series) indicating the property's location
- A Sketch map for historic districts and properties having large acreage or numerous resources.

**Photographs**

Representative black and white photographs of the property.

**Additional items**

(Check with the SHPO or FPO for any additional items.)

**Paperwork Reduction Act Statement:** This information is being collected for applications to the National Register of Historic Places to nominate properties for listing or determine eligibility for listing, to list properties, and to amend existing listing. Response to this request is required to obtain a benefit in accordance with the National Historic Preservation Act, as amended (16 U.S.C. 470 *et seq.*)

**Estimated Burden Statement:** Public reporting burden for this form is estimated to average 18.1 hours per response including time for reviewing instructions, gathering and maintaining data, and completing and reviewing the form. Direct comments regarding this burden estimate or any aspect of this form to the Chief, Administrative Services Division, National Park Service, P. O. Box 37127, Washington, DC 20013-7127; and the Office of Management and Budget, Paperwork Reductions Projects (1024-0018), Washington, DC 20303.

United States Department of the Interior  
National Park Service

# National Register of Historic Places Continuation Sheet

Section number 7 Page 1

## SUMMARY

The Quapaw-Prospect Historic District is a predominately residential neighborhood encompassing approximately nine blocks. The northern boundary borders Hot Springs National Park property, specifically, West Mountain. Homes along this boundary are situated on Prospect Avenue. The southern boundary consists of the properties lining Quapaw Avenue. There are eight side streets running between the two main avenues and one side street north of Prospect Avenue. On the east boundary, Quapaw Avenue and Prospect Avenue meet, with Prospect continuing on to the downtown historic district. The west boundary consists of Prospect Avenue looping down to join West Grand Avenue. Its close proximity to the Hot Springs Central Avenue Historic District (NR listed 06/25/85) and Bathhouse Row (NR listed 11/13/74 & NHL listed 05/28/87) in downtown Hot Springs contributes to the overall significance of the area.

## ELABORATION

Within the Quapaw-Prospect Historic District, the principal era of construction dates range from circa 1890 to circa 1951. Of the total 233 properties, there are several styles represented. Of these various styles, the Colonial Revival and Bungalow/Craftsman style dominate the area. There are also many fine examples of the Queen Anne style located throughout the district. Included within the historic district are many carriage houses and garages that are associated with the homes, as well as, ancillary buildings and structures such as: servants' quarters, wells, barns and storage sheds. The aforementioned resources are not included in the overall resource count due to the fact that while some of these resources still retain their historic appearance, others have been altered, adaptively reused, or have fallen victim to deterioration.

Including the four properties previously listed in the NR there are 233 resources located within this historic district. As delineated on the attached inventory list and sketch map, there are 139 contributing structures (59%) and 94 noncontributing structures (41%). Twenty-eight (28) of the noncontributing homes are historically and architecturally significant, but are currently covered in aluminum or vinyl siding which has concealed various architectural details thus altering the overall integrity of the home. However, siding is a reversible change, and should the aluminum and/or vinyl siding be removed from these buildings and replaced with wood siding, the percent of contributing structures would increase to 71%. There are some structures less than fifty years old; however, many of them were built to complement architectural styles already existing in the neighborhood. Within the Quapaw-Prospect Historic District there are four buildings that have been listed individually in the National Register of Historic Places and they include:

1. Rix House - 628 Quapaw Avenue
2. Williams House Bed and Breakfast Inn - 420 Quapaw Avenue
3. Eisele House - 815 Quapaw Avenue
4. Beauchamp House - 492 Prospect Avenue

United States Department of the Interior  
National Park Service

## National Register of Historic Places Continuation Sheet

Section number 7 Page 2

Comprised of primarily residential buildings, the Quapaw-Prospect Historic District possesses only a few non-residential properties, which include two churches, one synagogue, one hospital, one community center, three apartment buildings, and four bed and breakfast inns. All but one church and one apartment building lie east of Hawthorne Street, which is the boundary for private residential zoning and soft commercial zoning.

From any of the five points of entry into the neighborhood, it is immediately evident that the area's resources are historical in nature.

### Mid 19th Century

#### **Gothic Revival**

The Grand Avenue Methodist Church at 841 Quapaw (GA0223) is the only structure in this category.

#### **Late Victorian**

#### **Italianate**

Two structures represent this style. An example of the Italianate style is the Moore Apartments at 333 Prospect (GA0255). Typical features include the brick arches over the windows and doors, and the symmetrical facade composition.

#### **Queen Anne/Eastlake**

Fourteen stately homes are classified as the Queen Anne/Eastlake style. Among them are the Smith House (Vintage Comfort Inn) at 303 Quapaw (GA0160), and the Williams House at 420 Quapaw (GA0174). Circular bays, fish scale shingles, turrets, finials, and carved wood panels are just a few of the characteristics of these homes.

#### **Folk Victorian**

This style is represented by nine homes in the neighborhood. One feature of the quaint Victorian charm of these smaller homes is their carved wood ornamentation. An example is the Bankston House at 467 Prospect (GA0272).

#### **Renaissance Revival**

The Knickerbocker Hotel at 228 Prospect (GA0456) is the only example of this style of architecture in the area. Features in the Knickerbocker include wide roof eaves with large brackets, a low pitch hipped roof, rusticated quoins, a pyramidal skylight, and a double-leaf front door with glass panels.

United States Department of the Interior  
National Park Service

## National Register of Historic Places Continuation Sheet

Section number 7 Page 3

### Late 19th and 20th Century Revivals

#### **Colonial Revival**

A close second in architectural classification are the forty-seven homes that were built in the Colonial Revival style. Included as examples of this category are the Homer-Angle House at 710 Quapaw (GA0199), the Purdom House at 808 Quapaw (GA0216), The Porter House at 104 Fern (GA0409), the Jackson-Miles House at 528 Prospect (GA0290), and the Stell House at 900 Prospect (GA0343). Hipped roofs with full-width porches are typical of the earlier examples while side-gabled roofs over simple, two-story rectangular blocks are representative of later examples. Principal areas of interest are entrances, cornices and windows. Broken pediments over entrances frequently typify this style. Cornices are often adorned with dentils or modillions. Windows are rectangular in shape with double-hung sashes and often have multiple panes.

#### **Dutch Colonial Revival**

The two homes that represent this style are the Martin House at 108 Fern (GA0411) and the Kaufman House at 212 Violet (GA0442). The gambrel roofs and clipped gable roof lines are the most notable characteristics of these homes.

#### **Classical Revival**

The Levi Hospital at 300 Prospect (GA0458) is the only example of this style of architecture as applied to a public-use facility in the neighborhood.

#### **Neo-Classical**

The four homes in this style are the Bayles House at 706 Quapaw (GA0198), the Thrash House at 765 Quapaw (GA0212), the Grieves-Smith House at 805 Quapaw (GA0215), and the Martin-Eisele House at 815 Quapaw (GA0218). These larger structures with simpler lines characteristically have broad expanses of plain exterior wall surfaces in keeping with the styles of the Classical eras. All have single columns across large front porches. The widow's walk adorning the top of the Martin-Eisele House is the only one of its kind in the neighborhood, along with features such as the Palladian window in the attic and egg and dart molding around the cornice.

#### **Tudor/English Revival**

Eleven homes represent the English Revival style of architecture. Examples include the Welcher House at 915 Prospect (GA0354) and the McCrary House at 1004 Prospect (GA0359). These period style homes display typical stucco, half-timbering and dark wood trim.

#### **Mission/Spanish Colonial Revival**



United States Department of the Interior  
National Park Service

## National Register of Historic Places Continuation Sheet

Section number 7 Page 4

The Weil House at 117 Fern (GA0415) is the only example of this style in the area. The tile roof, arched windows and decorative raised parapet are typical features of the Mission style.

### **Mediterranean**

The two examples of this style of architecture are the Browne-Tarleton House at 812 Quapaw (GA0217), and the Cameron House at 654 Prospect (GA0315). The use of tile roofs, stucco, and arcaded porches are evident in both homes.

### **Exotic Revivals**

The eclectic Russian Villa at 634-636 Prospect (GA0313) is the only example of this style of architecture.

### **Late 19th & Early 20th Century American Movements**

#### **Craftsman/Bungalow**

The neighborhood is predominantly composed of this style with seventy-one Craftsman homes and fifteen Bungalow homes. Typical features include wide projecting roofs with exposed rafters, large front porches, wood columns on stone piers, and stone chimneys and foundations. Examples include the Hamby House at 123 Rose (GA0432), the Callahan House at 719 Prospect (GA0324), the Lane Duplex at 525/527 Quapaw (GA0179), the Anderson House at 539 Prospect (GA0294), and the Kirstien House at 624 Prospect (GA0307).

### **Modern Movement**

#### **Plain Traditional**

Four homes are representations of this style. An example is the Wiseman House at 618 Orange (GA0435). They are noteworthy for their clean lines, functional floor plan and unornamented exterior.

#### **Contemporary or Modern**

This category consists of thirty-five structures that are under fifty years old and are contemporary in architecture. However, there are a few houses that were constructed in 1951 or earlier that are modest examples of the Ranch House, which provided affordable, efficient, and comfortable living. Examples include the Maurice Kallsnick Home at 101 Fern Street (GA0408) and the residence located at 104 Bond Street (GA0417).

### **Integrity**

The Quapaw-Prospect Historic District possesses a strong sense of integrity as a residential neighborhood comprised of houses constructed between circa 1890 to circa 1940. A sense of community pride is ever present

United States Department of the Interior  
National Park Service

## National Register of Historic Places Continuation Sheet

Section number 7 Page 5

in the neatly manicured lawns and faithfully restored homes. Overall, the setbacks and massing of the majority of the residences have been retained and give the neighborhood a very cohesive and pleasing feeling. Original construction materials used when building these homes included brick, weatherboard, and stone. These materials are still evident throughout the neighborhood. The neighborhood also has an abundance of stone and concrete retainer walls that add to the historic ambience of the area. These same stones are used in the bases of many of the craftsman style homes. A large number of houses in the proposed district are wood frame with two floors, an attic and a basement. Brick is the second most common building element in the area. Many homes still have the original screen porches, so indicative of an earlier time.

Also contributing to the overall historic feeling of the district is the visual continuity that is provided by the wide, tree-lined streets, many of which still retain original curbing. Oaks, Maples, Magnolias, and Dogwood trees are located throughout the neighborhood and were either in existence before the area was developed or they were planted as the homes were built as part of the designed landscape. The primary landscape artist of the period was Julian Breckling, Sr. Other historic plantings include various flowering plants and several varieties of azaleas. The overall setting of the building is very similar to the characteristic of the neighborhood at the time of its origin and development.

The large present-day lots are evidence of the original design or layout of the neighborhood as they have retained their original dimensions throughout the years. The integrity of design is further validated by the fact that nowhere in the area has there been a subdivision of lots. As a residential district, the Quapaw-Prospect Historic District retains a high degree of integrity of location, setting, design, workmanship, feeling, association, and materials.

Many prominent leaders of Hot Springs have lived in or are still living in the neighborhood. The extensive and varied collection of historic architectural styles present in the Quapaw-Prospect Historic District attract tour busses and tourists immersing themselves in the history of Hot Springs, Arkansas.

United States Department of the Interior  
National Park Service

## National Register of Historic Places Continuation Sheet

Section number 8 Page 1

### SUMMARY

The Quapaw-Prospect Historic District is historically significant for its representation of architectural styles spanning a period of circa 1890 to circa 1951. Through the years, it has remained primarily a residential area with some soft commercial influences. The quiet, peaceful, tree-lined streets remind one of a by-gone era. Original stone walls, stained glass windows, beveled and leaded glass doors and windows, widow's walks, true divided light window panes and turrets are just a few of the architectural features that make the neighborhood historically significant for both residents and visitors alike. Its close proximity to the Hot Springs Central Avenue Historic District (NR listed 06/25/85) and Bathhouse Row (NR listed 11/13/74 & NHL listed 05/28/87) in downtown Hot Springs contributes to the overall significance of the area. The Quapaw-Prospect Historic District is being nominated, with local significance, to the National Register of Historic Places under Criterion because of the significant linkage of historic resources that embody distinctive characteristics of particular architectural styles and periods of construction that exemplify the evolution of architecture in Hot Springs from circa 1890 to circa 1951.

### ELABORATION

In the early 1800s, white settlers began building homes in the Hot Springs area hoping to benefit from the healing waters that Indians had frequented for many years. By the 1870s, Hot Springs was a thriving town attracting tourists from across the nation. Diamond Joe Reynolds, a wealthy New York entrepreneur, came to Hot Springs to take the cure for his rheumatism and found that he could only go as far as Malvern, Arkansas by train. As a result, he built a connecting narrow-gauge railway from Malvern to Hot Springs. By 1889, he realized that there was a demand for a standard-gauge railway to accommodate the rich and famous who arrived in Hot Springs in their private Pullman cars. In the 1890s a second railroad from Little Rock to Hot Springs was built by Colonel Samuel W. Fordyce. Hot Springs was being transformed into the nation's smart watering place that would continue into the next century.

As this town nestled between two mountain ridges proceeded to grow, so did its population and its need for more residential land. The first homes in the Quapaw-Prospect area were built in the 1880s. Many did not survive the fire of 1905, which went as far as the 700 block of Quapaw Avenue. Some were rebuilt and other new construction was already in progress to meet the demands of a growing town. Alma Clare Horner, who is nearing 80 years old and who is a lifelong resident of the neighborhood, remembers that there were very few contractors in the area when she was growing up. Most of the building was contracted out to area craftsmen like builder, Robert Higgins. The owner of the home would act as the contractor and negotiate with the individual craftsmen for whatever their particular skills were. Marti Dalby, who owns one of the historic homes in the neighborhood, states that she was told when she was moving in to her house that the windows, molding, and other such architectural features were built in the front yard, as was probably the case for most homes built around the turn of the century. One of the more widely-used contractors was E.B. Mooney who worked with

United States Department of the Interior  
National Park Service

## National Register of Historic Places Continuation Sheet

Section number 8 Page 2

many of the original homeowners when their home was being constructed. Most of the building supplies from the 1930s on were acquired from Horner Construction Company in Hot Springs. Throughout the years the neighborhood continued to grow and most of what we see today was constructed up through the early 1950s. Many of the homes that you see in the historic district were the homes of prominent leaders of Hot Springs, some of whom still live in the neighborhood.

Several of the buildings within the historic district have served the neighborhood in important ways over the years. The Queen Anne home at 472 Prospect Avenue was home to the Kindercoop, a preschool and kindergarten from 1937 to 1968. Many leading citizens in the Hot Springs area began their education in this home. It is now a bed and breakfast. The Levi Hospital, one of the nation's only medical facilities devoted exclusively to the treatment of arthritis, is located at 300 Prospect Avenue. Founded in 1914, it is one of the few places where the thermal waters are piped directly in, other than Bathhouse Row. Religious institutions in the neighborhood include the Jewish synagogue at 300 Quapaw Avenue and Grand Avenue Methodist Church at 841 Quapaw Avenue. In the late 1940's, the city decided to raise \$300,000 to build the new YMCA and YWCA on the 500 block of Quapaw Avenue. In 1951, the structure was completed, bringing the surrounding community into the neighborhood to enjoy its services for over thirty years. It now serves as the Quapaw Community Center and is available for daily childcare as well as a home to many community organizations. In 1986, concerned citizens of the neighborhood founded the Quapaw-Prospect Area Preservation (QPAP) Association, Inc. With over 100 families actively involved, this organization works to bring the area's residents together to focus on common goals that promote historic preservation and other neighborhood projects that benefit all ages.

### Significance

The historic residential neighborhood that comprises the proposed Quapaw-Prospect Historic District remains remarkably intact displaying an ensemble of late nineteenth and early twentieth-century homes - the finest of this era surviving in the city of Hot Springs. Variations of national architectural styles such as Queen Anne, Classical Revival, Colonial Revival, Spanish Revival and Craftsman are well represented in the district. The importance of this neighborhood's high degree of preservation is underscored by the fact that it remains the closest historic residential area to Central Avenue, the equally historic commercial core of downtown Hot Springs. The Quapaw-Prospect Historic District is the earliest and best intact example of a residential area that was built to house many of the people who either owned downtown businesses or worked there. The Quapaw-Prospect Historic District is being nominated, with local significance, to the National Register of Historic Places under Criterion C because of the significant linkage of historic resources that embody distinctive characteristics of particular architectural styles and periods of construction that exemplify the evolution of architecture in Hot Springs from circa 1890 to circa 1940.

United States Department of the Interior  
National Park Service

## National Register of Historic Places Continuation Sheet

Section number   9   Page   1  

---

### BIBLIOGRAPHY

Brown, Dee. "The American Spa." Rose Publishing Company, Arkansas, 1982.

Garland County Historical Society. The Record. Arkansas, 1984.

Garland County Historical Society. The Record. Arkansas, 1980.

Garland County Historical Society. The Record. Arkansas, 1972.

Interview with Alma Claire Horner, Hot Springs, May 1996.

Interview with Mary Callahan, Hot Springs, May 1996.

# QUAPAW/PROSPECT HISTORIC DISTRICT

HISTORIC NAME	NUMBER	STREET	CIRCA	CON	NON-CONT	ARCHITECTURAL STYLE
Beth Jacob Synagogue	200	Quapaw Avenue	1951	x		
Selected Funeral Properties	201	Quapaw Avenue	1975		x	Modern
Miljailovic	206	Quapaw Avenue	1924	x		Craftsman
Ozark Tourist Courts	210	Quapaw Avenue	1952		x	Plain/Traditional
Fotioo	214	Quapaw Avenue	1900		x	Folk Victorian w/ siding *
House Of Israel	300	Quapaw Avenue	1960		x	Modern
Vintage Comfort Bed & Breakfast Inn	303	Quapaw Avenue	1908	x		Queen Anne
Quapaw Apartments	315	Quapaw Avenue	1954		x	Modern
Coble	317	Quapaw Avenue	1906	x		Colonial Revival
Gables Bed & Breakfast Inn	318	Quapaw Avenue	1905	x		Queen Anne
Illinois Apartments	321	Quapaw Avenue	1914	x		Italianate
Historic Society of Garland County	328	Quapaw Avenue	1967		x	Modern
Tawny Court	329	Quapaw Avenue	1942	x		Colonial Revival
Jovanovic	330	Quapaw Avenue	1912	x		Craftsman
West Mountain Lodge	332	Quapaw Avenue	1912			Craftsman

HISTORIC NAME	NUMBER	STREET	LRCA	CONT	NON-CONT	ARCHITECTURAL STYLE
Graves	400	Quapaw Avenue	1916		x	Colonial Revival w/siding *
Rayburn	402	Quapaw Avenue	1916		x	Craftsman w/siding *
Starlite Corporation	411	Quapaw Avenue	1904	x		Folk Victorian
Wharton	415	Quapaw Avenue	1904	x		Victorian
Wharton	417	Quapaw Avenue	1904	x		Victorian
Church of Christ	419	Quapaw Avenue	1900	x		Colonial Revival
Williams House Bed & Breakfast Inn	420	Quapaw Avenue	1891	x		Queen Anne/Victorian **
Quapaw Community Center	500	Quapaw Avenue	1951		x	Modern
Taylor Apartments	515	Quapaw Avenue	1914	x		Italianate
Spitzer	519	Quapaw Avenue	1952		x	Modern
Lane	521, 523	Quapaw Avenue	1924	x		Craftsman
Smith	525, 527	Quapaw Avenue	1924	x		Craftsman
Loye	601	Quapaw Avenue	1950		x	Modern
Spitzer	602	Quapaw Avenue	1901	x		Craftsman
Ledgerwood	605	Quapaw Avenue	1920	x		Colonial Revival
Wilson	611	Quapaw Avenue	1940	x		Colonial Revival
Belding	614	Quapaw Avenue	1915	x		Craftsman
Craig	615	Quapaw Avenue	1924	x		Colonial Revival

HISTORIC NAME	NUMBER	STREET	CIRCA	CONT	NON-CONT	ARCHITECTURAL STYLE
Hilton	620	Quapaw Avenue	1940		x	Colonial Revival w/siding *
Simpson	627	Quapaw Avenue	1920		x	Colonial Revival
Rix	628	Quapaw Avenue	1897	x		Colonial Revival **
Loye	629	Quapaw Avenue	1960		x	Modern
Smith	632	Quapaw Avenue	1940	x		Plain/Traditional
Case	639	Quapaw Avenue	1926	x		Craftsman/Bungalow
Mendel	640	Quapaw Avenue	1931	x		Craftsman
Connell-Wheeler	641	Quapaw Avenue	1940		x	Craftsman/Bungalow w/siding *
Avery-Lake	646	Quapaw Avenue	1907	x		Victorian
Ledgerwood	650	Quapaw Avenue	1960		x	Modern
Knofel	701	Quapaw Avenue	1920		x	Craftsman w/siding *
Burgauer	705	Quapaw Avenue	1924	x		Georgian/Colonial Revival
Bayles	706	Quapaw Avenue	1894	x		Neoclassical
Horner-Angle	710	Quapaw Avenue	1912	x		Colonial Revival
Freman	720	Quapaw Avenue	1895		x	Queen Anne w/siding
Vaughan	725	Quapaw Avenue	1902	x		Colonial Revival
Eckler	726	Quapaw Avenue	1903	x		Colonial Revival
Proctor	729	Quapaw Avenue	900	x		Craftsman/Prairie



HISTORIC NAME	NUMBER	STREET	APRCA	CONT	NON-CONT	ARCHITECTURAL STYLE
Steigler	732	Quapaw Avenue	1898	x		Craftsman
Perez	735	Quapaw Avenue	1910		x	Craftsman w/enclosed porch
Wade	737	Quapaw Avenue	1929		x	Craftsman/Bungalow w/siding *
Wall-Pathman	738	Quapaw Avenue	1966		x	Traditional
Elcan	739	Quapaw Avenue	1920	x		Craftsman
Giusti	744	Quapaw Avenue	1923		x	Bungalow w/siding & enclosed porch
Jucas	748	Quapaw Avenue	1915		x	Bungalow w/siding & enclosed porch
Afton Williams Apartments	763	Quapaw Avenue	1930		x	Colonial Revival w/siding *
Stallcup	765	Quapaw Avenue	1912	x		Neoclassical
Smith	802	Quapaw Avenue	1965		x	Modern
Woodcock-Callahan	804	Quapaw Avenue	1920	x		Craftsman/Bungalow
Grieves	805	Quapaw Avenue	1904	x		Neoclassical
Purdum	808	Quapaw Avenue	1923	x		Colonial Revival
Browne-Tarleton	812	Quapaw Avenue	1907	x		Italianate
Eisele	815	Quapaw Avenue	1904	x		Neoclassical **
Vanderslice	817	Quapaw Avenue	1963		x	Colonial Revival
Murray	825	Quapaw Avenue	1966		x	Colonial Revival
Nutt	831	Quapaw Avenue	1922			Craftsman

HISTORIC NAME	NUMBER	STREET	CIRCA	CONT	NON-CONT	ARCHITECTURAL STYLE
Wilson	835	Quapaw Avenue	1934	x		Craftsman/Bungalow
Grand Avenue Methodist Church	841	Quapaw Avenue	1927	x		Gothic Revival
Schnipper	850	Quapaw Avenue	1969		x	Colonial Revival/Williamsburg
Riverboat House	868	Quapaw Avenue	1889	x		Queen Anne/Victorian
Shumack	902	Quapaw Avenue	1918	x		Craftsman/Bungalow
Duke	904	Quapaw Avenue	1910	x		Victorian
Williams	906	Quapaw Avenue	1932		x	Craftsman w/siding *
Reynolds	908	Quapaw Avenue	1911	x		Craftsman
Darch Apartments	226	Prospect Avenue	1918	x		Craftsman/Colonial Revival
Knickerbocker Apartments	228	Prospect Avenue	1890	x		Renaissance Revival
Rosenthal	236	Prospect Avenue	1919	x		Craftsman
Levi Towers	240	Prospect Avenue	1981		x	Modern
Levi Hospital	300	Prospect Avenue	1920	x		20th Century Commercial
Moore	333	Prospect Avenue	1899	x		Italianate
Prospect Apartments	401	Prospect Avenue	1900	x		Queen Anne w/siding modifications
Schirmer	403	Prospect Avenue	1900	x		Colonial Revival
Williams	408	Prospect Avenue	1900		x	Colonial Revival w/modifications

HISTORIC NAME	NUMBER	STREET	ARCA	CONT	NON-CONT	ARCHITECTURAL STYLE
Callahan	411	Prospect Avenue	1900	x		Colonial Revival
Russell-Seiz	424	Prospect Avenue	1910	x		Craftsman
Aubuchon	430	Prospect Avenue	1900	x		Colonial Revival/American Four Square
Potter	431	Prospect Avenue	1897	x		Colonial Revival/American Four Square
Adcock	438	Prospect Avenue	1917	x		Colonial Revival
Casa Apartments	441	Prospect Avenue	1965		x	Modern
Freeman	443	Prospect Avenue	1955		x	Plain/Traditional
Freeman	445	Prospect Avenue	1952		x	Bungalow
Durr	465	Prospect Avenue	1944	x		Colonial Revival
Moore	425, 427, 429	Prospect Avenue	1920	x		Craftsman
Bankston	467	Prospect Avenue	1899	x		Folk Victorian
Dillon	468	Prospect Avenue	1928	x		Colonial Revival
Banks	469	Prospect Avenue	1950		x	Modern
Cooper	472	Prospect Avenue	1895	x		Queen Anne
Ross	473	Prospect Avenue	1960		x	Modern
Ross	475	Prospect Avenue	1965		x	Modern
Ayers	479	Prospect Avenue	1918		x	Craftsman w/siding *
Iousley	480	Prospect Avenue	1918			Craftsman w/siding & enclosed front porch

HISTORIC NAME	NUMBER	STREET	ARCA	CONT	NON-CONT	ARCHITECTURAL STYLE
Demby	484	Prospect Avenue	1892	x		Colonial Revival
Beauchamp	492	Prospect Avenue	1903	x		Colonial Revival **
Rosecliff Apartments	502	Prospect Avenue	1960		x	Modern
Freeman	503	Prospect Avenue	1894		x	Colonial Revival w/siding *
Antonio	515	Prospect Avenue	1930	x		English Revival
Miller	517	Prospect Avenue	1938	x		Bungalow
Anderson	519	Prospect Avenue	1921	x		Tudor Revival
Minor	520	Prospect Avenue	1922	x		Craftsman w/siding
	521	Prospect Avenue	1924		x	Craftsman w/siding *
Pryor	523	Prospect Avenue	1897	x		Folk Victorian
Jackson-Miles	528	Prospect Avenue	1905	x		Colonial Revival
Episcopal Rectory	535	Prospect Avenue	1905	x		Craftsman
Sterns	537	Prospect Avenue	1926		x	Craftsman/Bungalow w/siding *
Mattar	538	Prospect Avenue	1928		x	Colonial Revival w/siding *
Anderson	539	Prospect Avenue	1927	x		Craftsman
Ellis	541	Prospect Avenue	1960		x	Modern
Buchanan-Hankins	544	Prospect Avenue	1890	x		Queen Anne
Lancaster	552	Prospect Avenue	1891	x		Queen Anne

HISTORIC NAME	NUMBER	STREET	CIRCA	CONT	NON-CONT	ARCHITECTURAL STYLE
Holland	554	Prospect Avenue	1892	x		Folk Victorian
Horner	601	Prospect Avenue	1923	x		Prairie/Craftsman
Randolph	602	Prospect Avenue	1921	x		Craftsman/Colonial Revival
Borland	611	Prospect Avenue	1912		x	Colonial Revival w/siding *
Patomson	614	Prospect Avenue	1903	x		Folk Victorian
Smiley	618	Prospect Avenue	1928	x		Craftsman/Bungalow
Minginas	620	Prospect Avenue	1924	x		Colonial Revival
Anderson	621	Prospect Avenue	1929	x		English Revival/Tudor
Ramseur	623	Prospect Avenue	1920		x	Craftsman w/modifications
Kirstien	624	Prospect Avenue	1893	x		Craftsman/Bungalow
Pathman	625	Prospect Avenue	1968		x	Modern
Urmacker	628	Prospect Avenue	1923	x		Bungalow
Wall	629	Prospect Avenue	1974		x	Modern
Loye	630	Prospect Avenue	1955		x	Modern
Massey	633	Prospect Avenue	1926		x	Craftsman w/siding *
Russian Villa	634, 636	Prospect Avenue	1930	x		Exotic Revival
Benedikt	650	Prospect Avenue	1955		x	Modern
Cameron	654	Prospect Avenue	1930			Mediterranean

HISTORIC	NAME	NUMBER	STREET	ARCA	CONT	NON-CONT	ARCHITECTURAL STYLE
Bancroft-Potter		663	Prospect Avenue	1893		X	Colonial Revival w/siding *
Dake		700	Prospect Avenue	1904		X	Victorian w/modifications
Halpin-Balesh		701	Prospect Avenue	1928	X		Craftsman
Christmas		706	Prospect Avenue	1899	X		Colonial Revival
Lee		708	Prospect Avenue	1942		X	Colonial Revival w/siding
Senegar		711	Prospect Avenue	1911		X	Folk Victorian w/modifications
Benny		715	Prospect Avenue	1951	X		Modern
Callahan		717	Prospect Avenue	1920		X	Craftsman w/enclosed front porch
Callahan		719	Prospect Avenue	1920	X		Craftsman/American Four Square
Ledgerwood		721	Prospect Avenue	1957		X	Modern
Brock		800	Prospect Avenue	1926		X	Craftsman w/ siding modifications
Hebert		802	Prospect Avenue	1910		X	Colonial Revival w/siding *
Pearly		803	Prospect Avenue	1940	X		Colonial Revival
Young		805	Prospect Avenue	1927		X	Craftsman w/siding *
Sargent		806	Prospect Avenue	1934		X	Craftsman/Bungalow w/siding *
Cosby		808	Prospect Avenue	1932	X		English Revival
Magness		810	Prospect Avenue	1929	X		English Revival
Stumbaugh		812	Prospect Avenue	1930			Plain Traditional w/modifications

HISTORICAL NAME	NUMBER	STREET	RCA	CONT	NON-CONT	ARCHITECTURAL STYLE
Hubbard	814	Prospect Avenue	1928	X		Bungalow
Wanderslice	817	Prospect Avenue	1958		X	Modern
Overstreet	818	Prospect Avenue	1930		X	Plain Traditional w/modifications
Stough	819	Prospect Avenue	1968		X	Modern Traditional
Methodist Parsonage	820	Prospect Avenue	1930	X		Colonial Revival
Steigler	821	Prospect Avenue	1933	X		Colonial Revival
Meadows	822	Prospect Avenue	1930		X	Colonial Revival w/siding *
Garrett	824	Prospect Avenue	1960		X	Modern
Horner	825	Prospect Avenue	1970		X	Modern/Traditional
Stell	900	Prospect Avenue	1937	X		Georgian/Colonial Revival
Wallis	901	Prospect Avenue	1940	X		Colonial Revival
Pate	902	Prospect Avenue	1962		X	Modern
O'Neal	903	Prospect Avenue	1940		X	Colonial Revival w/siding *
Yauch	905	Prospect Avenue	1937		X	Plain/Traditional w/siding *
Durr	906	Prospect Avenue	1969		X	Colonial Revival
Ledwidge	910	Prospect Avenue	1972		X	Modern
Scheer	911	Prospect Avenue	1963		X	Modern
Hilpert	912	Prospect Avenue	1910	X		Craftsman

HISTORIC NAME	NUMBER	STREET	CIRCA	CONT	NON-CONT	ARCHITECTURAL STYLE
Loyd	916	Prospect Avenue	1920		x	Craftsman w/siding *
Thornton	915	Prospect Avenue	1926	x		English Revival
Welcher	918	Prospect Avenue	1929	x		Craftsman
Moss	924	Prospect Avenue	1931	x		Craftsman
Dierks	1000	Prospect Avenue	1940	x		Colonial Revival
Schweer	1001	Prospect Avenue	1930	x		Bungalow
C.J. Horner, Jr.	1003	Prospect Avenue	1930		x	English Revival w/modifications
McCrary	1004	Prospect Avenue	1927	x		English Tudor
Larsen	1014	Prospect Avenue	1936	x		English Revival
Glass	1015	Prospect Avenue	1925	x		English Revival
Reed	1020	Prospect Avenue	1936	x		English Revival
Miss Scarlett - Ladies of Court	216	Court Street	1896	x		Queen Anne/Victorian
Miss Lilly - Ladies of Court	218	Court Street	1896	x		Queen Anne/Victorian
Miss Fancy - Ladies of Court	220	Court Street	1896	x		Queen Anne/Victorian
inder	224	Court Street	1879	x		Craftsman
Linder	228	Court Street	1885	x		Folk Victorian



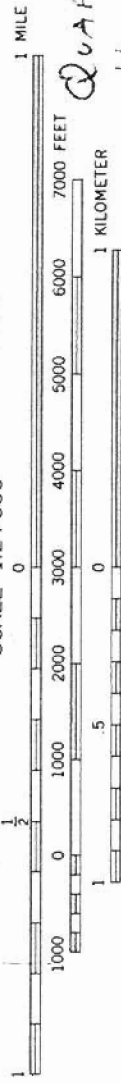
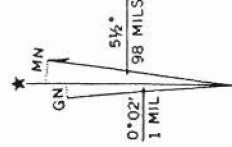
HISTORICAL NAME	NUMBER	STREET	YR. BUILT	CONTR.	NON-CONT.	ARCHITECTURAL STYLE
Fotioo	410	Market Street	1905		x	Victorian w/modifications
Hillside Court	411	Market Street	1940	x		Plain/Traditional
Huff	417	Market Street	1905	x		Folk Victorian
Simms	110	Bolton Street	1940	x		Bungalow
Unknown	112	Bolton Street	1936	x		Craftsman
Wiseman	618	Orange Street	1938		x	Plain/Traditional w/modifications
Starlite Apartments	619	Orange Street	1970		x	Modern
Hale	620	Orange Street	1920		x	Craftsman w/modifications
Spitzer	407	Hawthorne Street	1938		x	Craftsman w/siding *
Driver	408	Hawthorne Street	1900		x	Victorian w/siding *
Schermer	409	Hawthorne Street	1937	x		Bungalow
Hame Apartments	516	Hawthorne Street	1930		x	Craftsman w/siding *
Bayles	115	Rose Street	1910	x		Folk Victorian
Bowman	116	Rose Street	1937	x		Craftsman

HISTORIC NAME	NUMBER	STREET	ARCA	CONT	NON-CONT	ARCHITECTURAL STYLE
Milosavljevic	117	Rose Street	1900		x	Folk Victorian w/modifications
Kaufman	120	Rose Street	1964		x	Colonial Revival
Hamby	123	Rose Street	1910	x		Craftsman
Caldwell	124	Rose Street	1941	x		Colonial Revival
Ellis	126	Rose Street	1966		x	Modern
Unknown	104	Bond Court	1951	x		Early Ranch
Unknown	124	Bond Court	1929		x	Colonial Revival/altered
Geurin	125	Bond Court	1910		x	Folk Victorian/altered
Meek	200	Violet Street	1968		x	Modern
Bischof	207	Violet Street	1917	x		Colonial Revival
Meek	210	Violet Street	1963		x	Modern
Cross	211	Violet Street	1933	x		Craftsman/Bungalow
Kaufman	212	Violet Street	1903	x		Dutch Colonial
Sharpe	216	Violet Street	1929	x		Craftsman
Kallsnick	101	Fern Street	950			Plain/Traditional

HISTORICAL NAME	NUMBER	STREET	CIRCA	CONT	NON-CONT	ARCHITECTURAL STYLE
Porter-Douglass	104	Fern Street	1924	x		Colonial Revival
Archer Smith	105	Fern Street	1921	x		Craftsman
Martin	108	Fern Street	1920	x		Dutch Colonial
Housley	109	Fern Street	1928	x		Craftsman
Lyell	112	Fern Street	1948	x		Colonial Revival
Fletcher	113	Fern Street	1923	x		Colonial Revival
Weil	117	Fern Street	1924	x		Mission
Unknown	106	Chincapin Street	1929		x	Bungalow w/siding *
Cooper	108	Chincapin Street	1970		x	Modern
Banski	109	Chincapin Street	1944	x		Colonial Revival
Pence	111	Chincapin Street	1955		x	Bungalow
Unknown	105	Belmont Terrace	1936	x		Colonial Revival

\* Home would be considered contributing if the artificial siding did not conceal style-defining architectural details

\*\* Home is already listed in the National Register of Historic Places



493 HEMP WALLACE (VIA U.S. 70) 10 MI.

496 2'30" LAKE CATHERINE 6 MI.  
MALVERN 22 MI.

495 LAKE HAMILTON 7 MI.  
ARKADELPHIA 37 MI.

QUADRAN

*Quadrant Prospect*

*Historic District*

*Hot Springs,*

*Crandall Co.,*

*AR*

THIS MAP COMPLIES WITH NATIONAL MAP ACCURACY STANDARDS  
 FOR SALE BY U. S. GEOLOGICAL SURVEY, DENVER, COLORADO 80225, OR RESTON, VIRGINIA 22092  
 AND ARKANSAS GEOLOGICAL COMMISSION, LITTLE ROCK, ARKANSAS 72204

A FOLDER DESCRIBING TOPOGRAPHIC MAPS AND SYMBOLS IS AVAILABLE ON REQUEST

- A) 15/495040/381820
- B) 15/495020/3818420
- C) 15/494000/3817530
- D) 15/493000/3817240

UTM GRID AND 1976 MAGNETIC NORTH DECLINATION AT CENTER OF SHEET  
 on the predicted North American Datum 1983, projection lines 8 meters south and east as shown by dashed corner ticks



QUAPAW PROSPECT  
PRESERVATION AREA

FOUNDED 1986





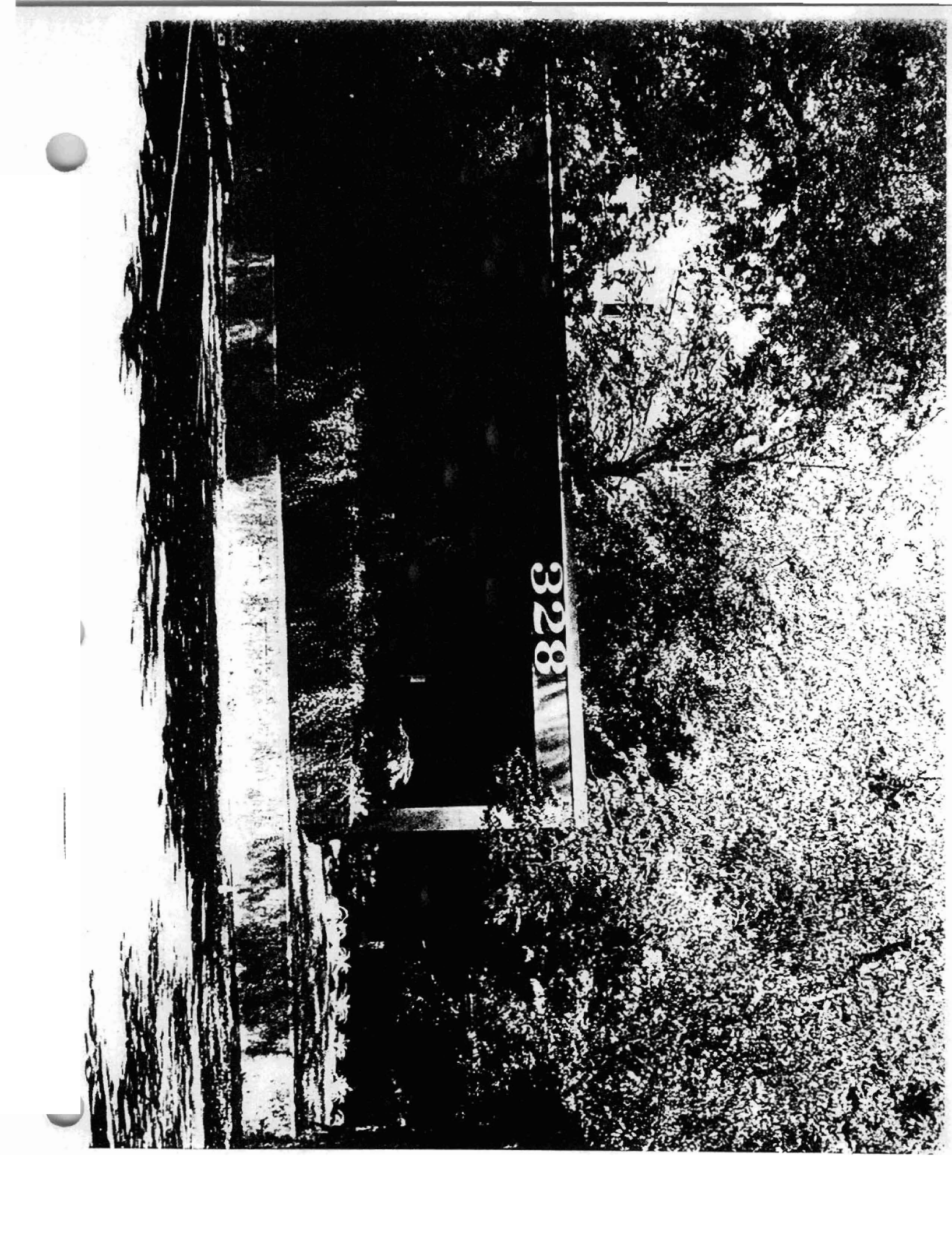
HISTORICAL  
SOCIETY

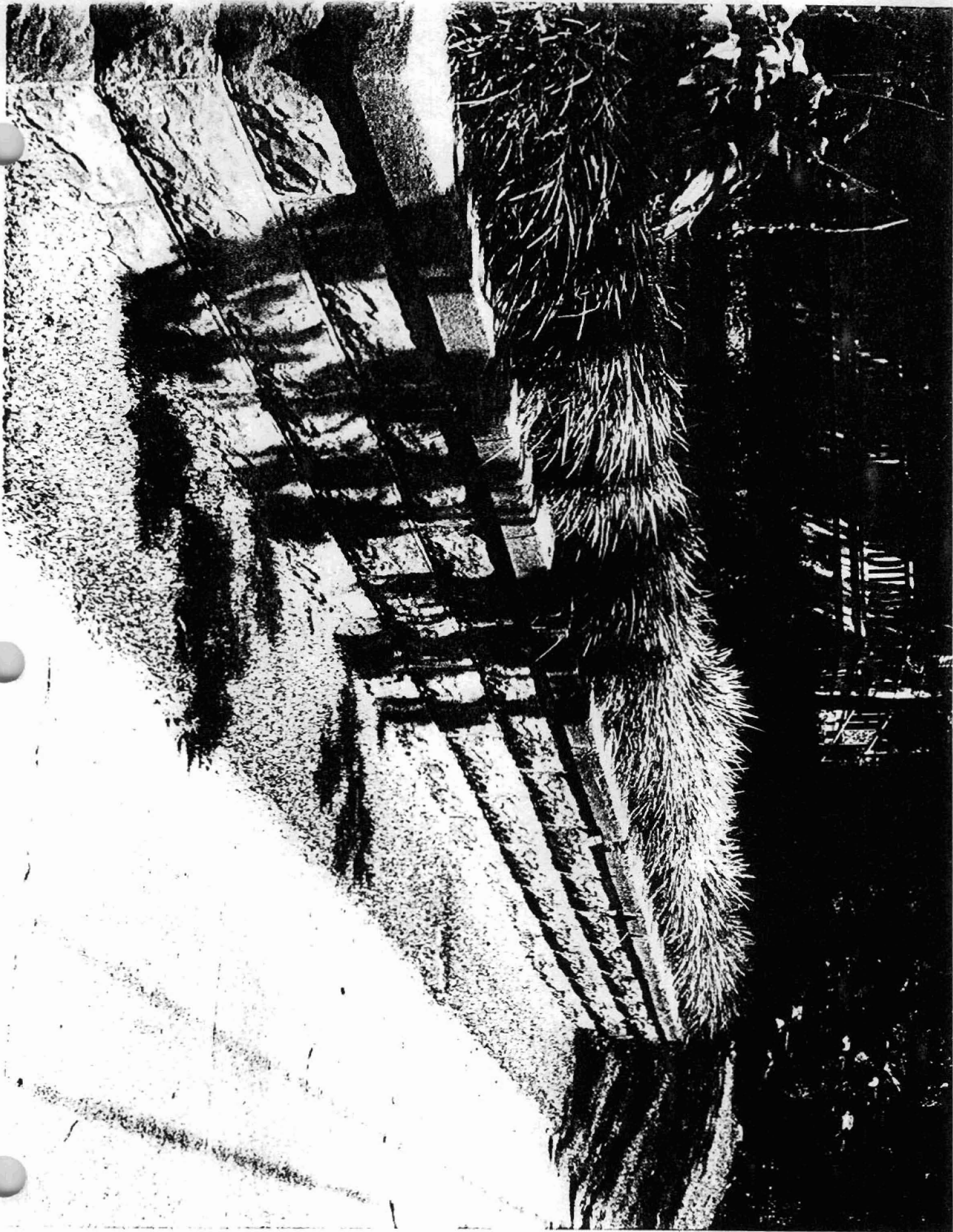
of

GARLAND COUNTY

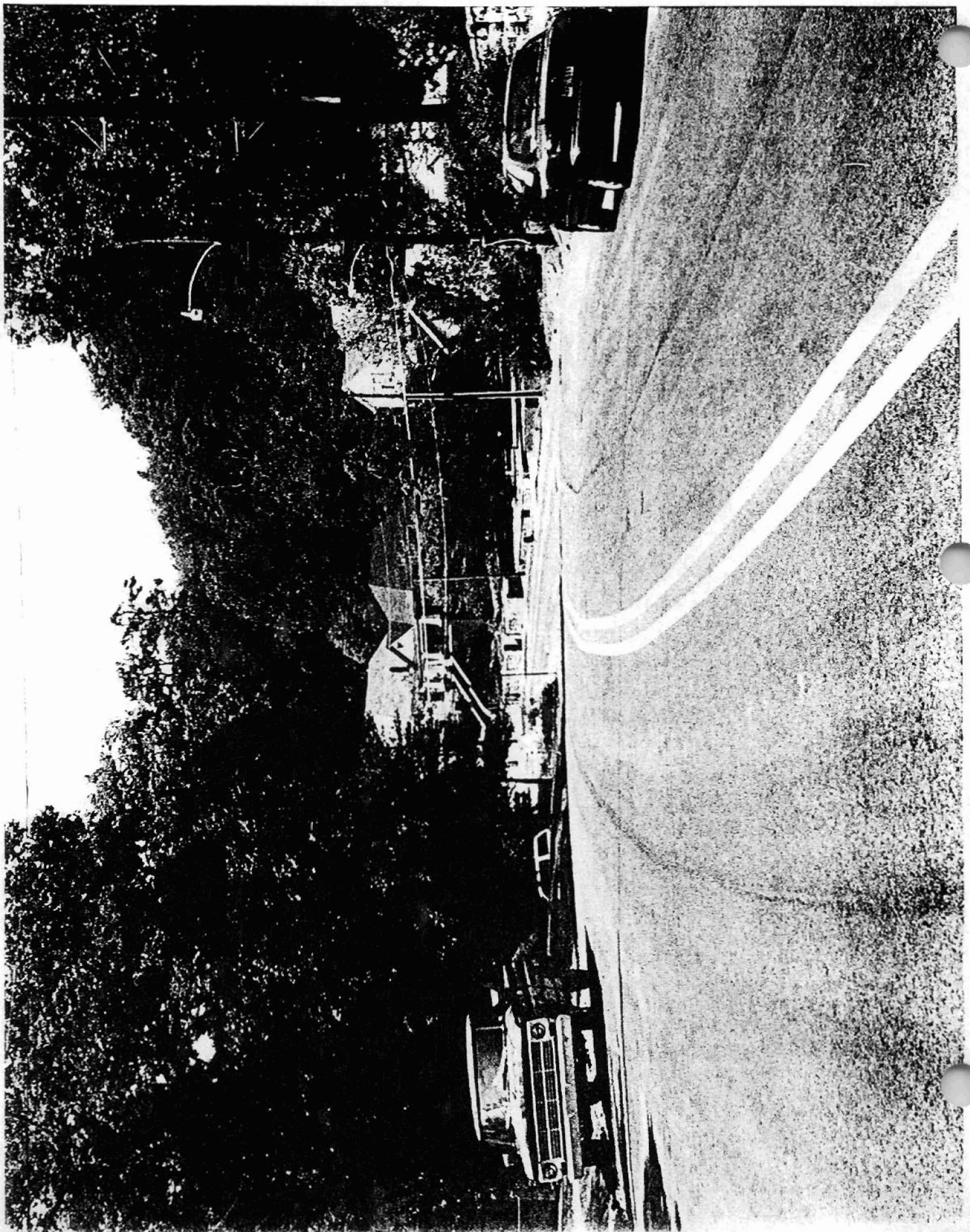
328

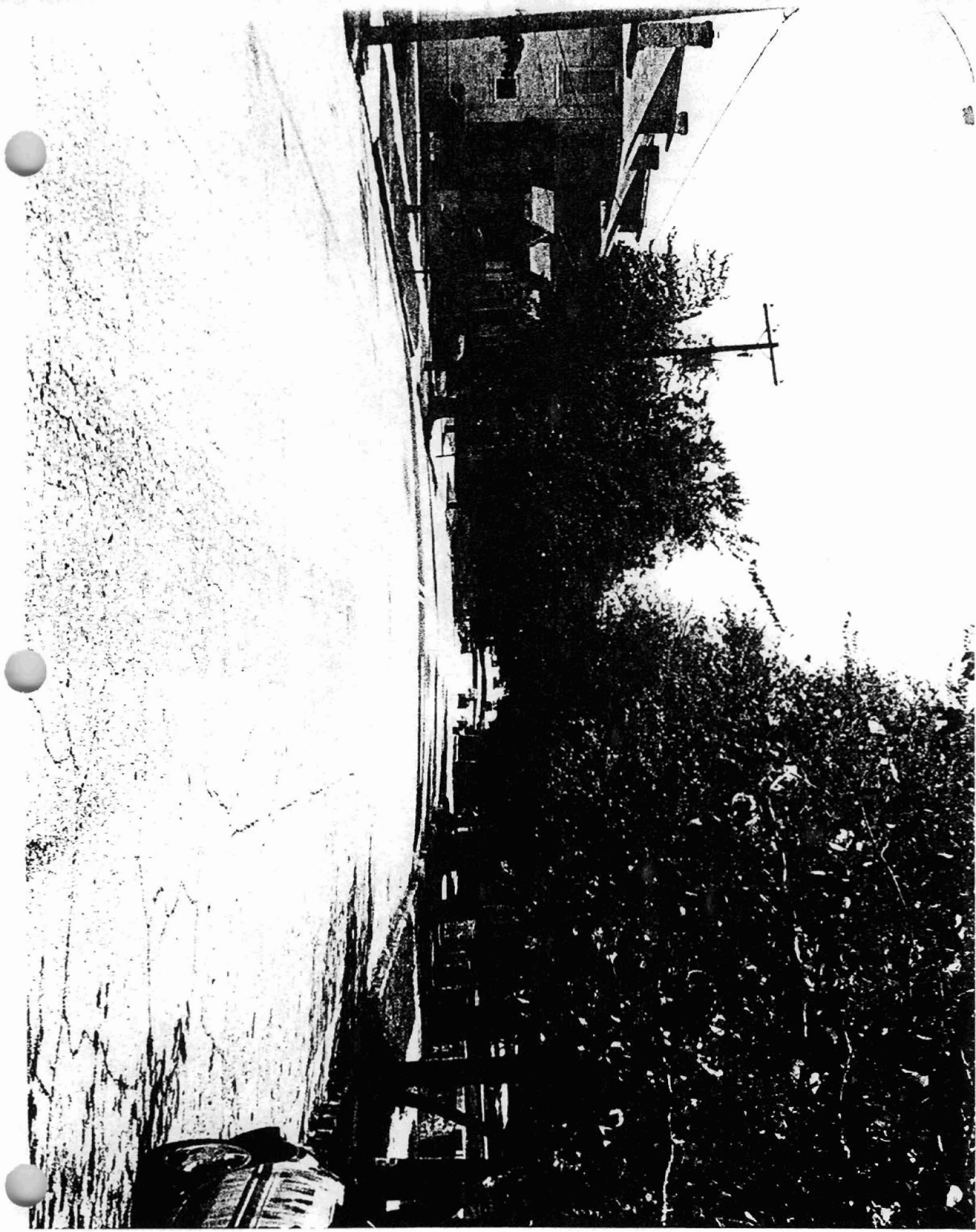
328

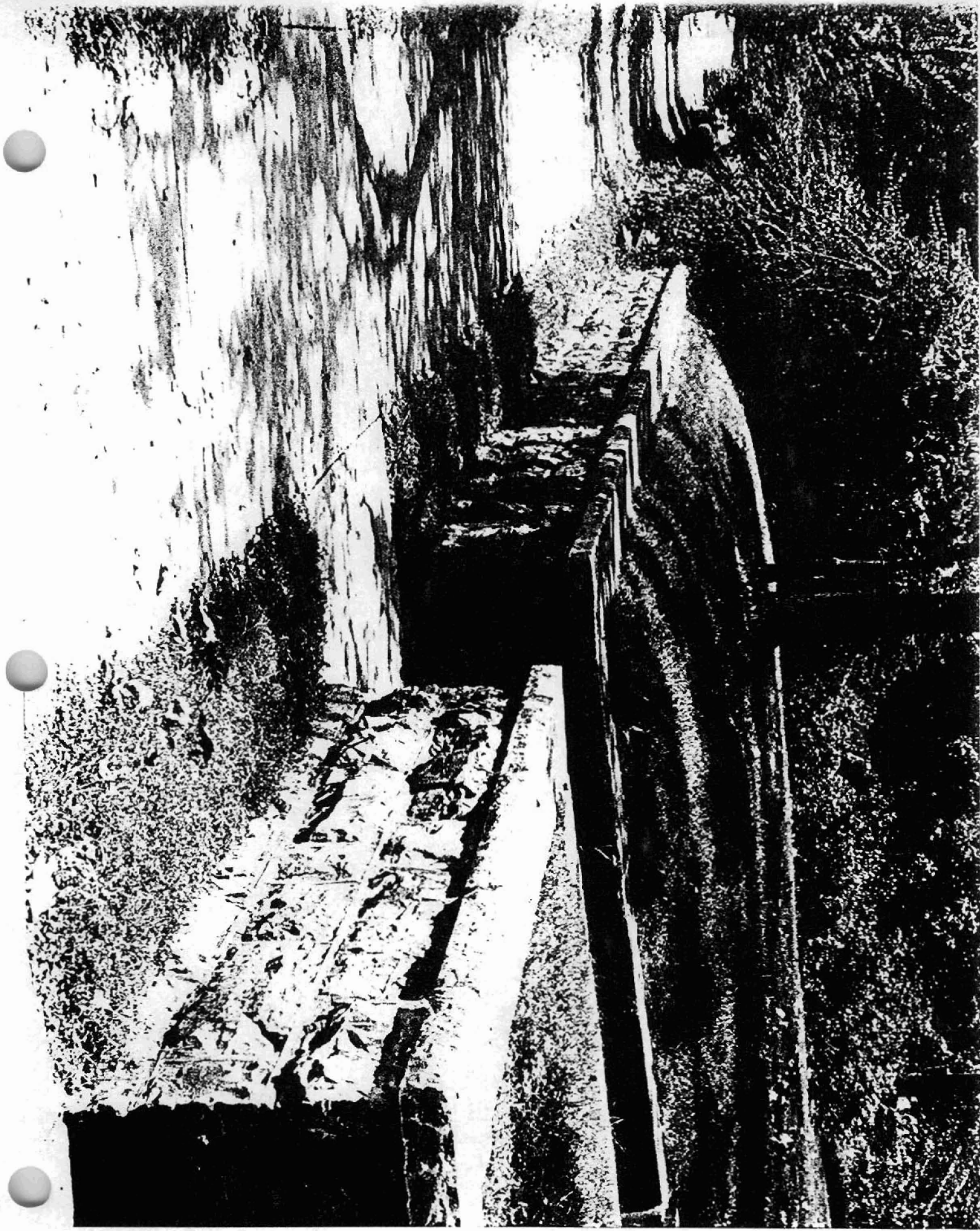


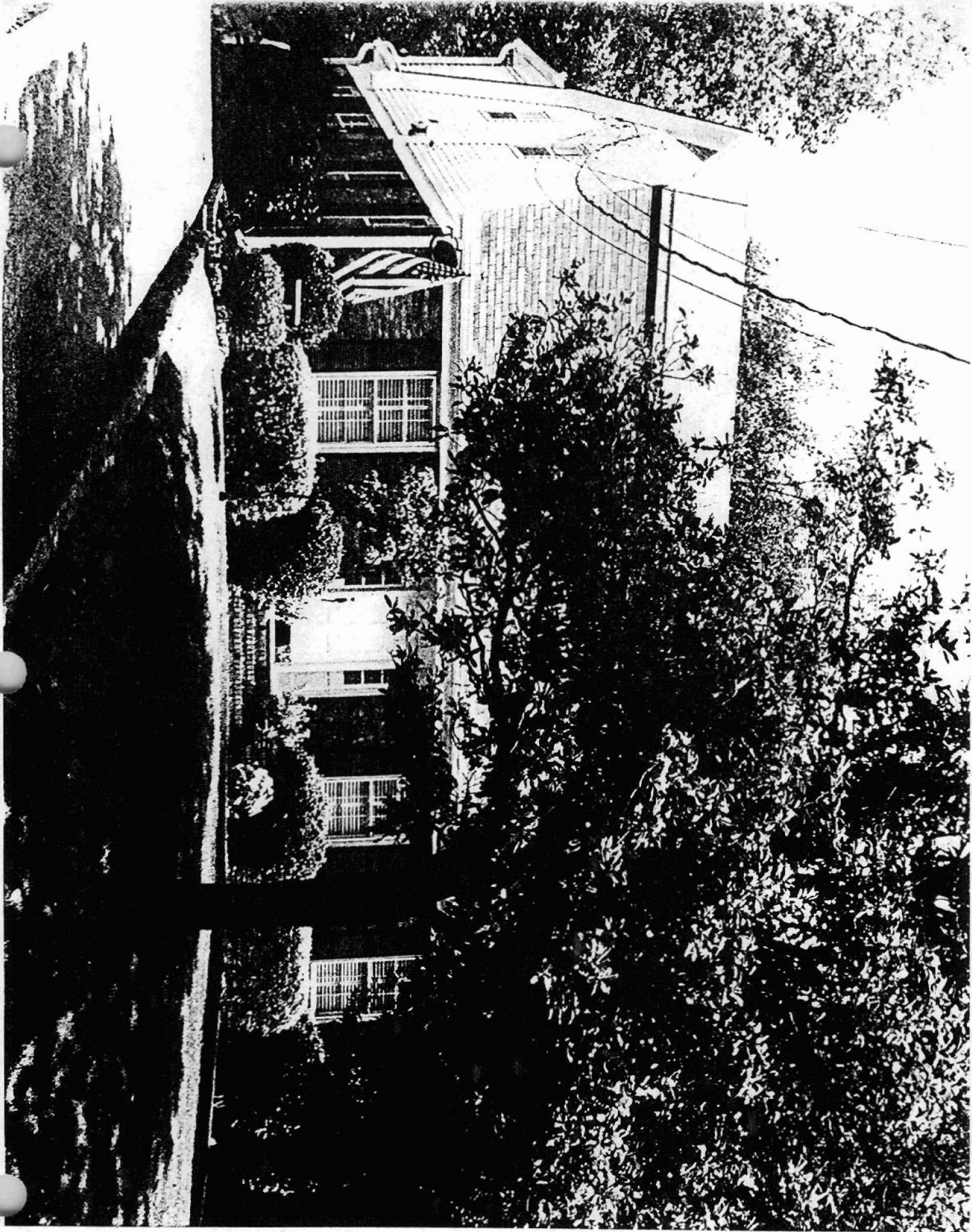


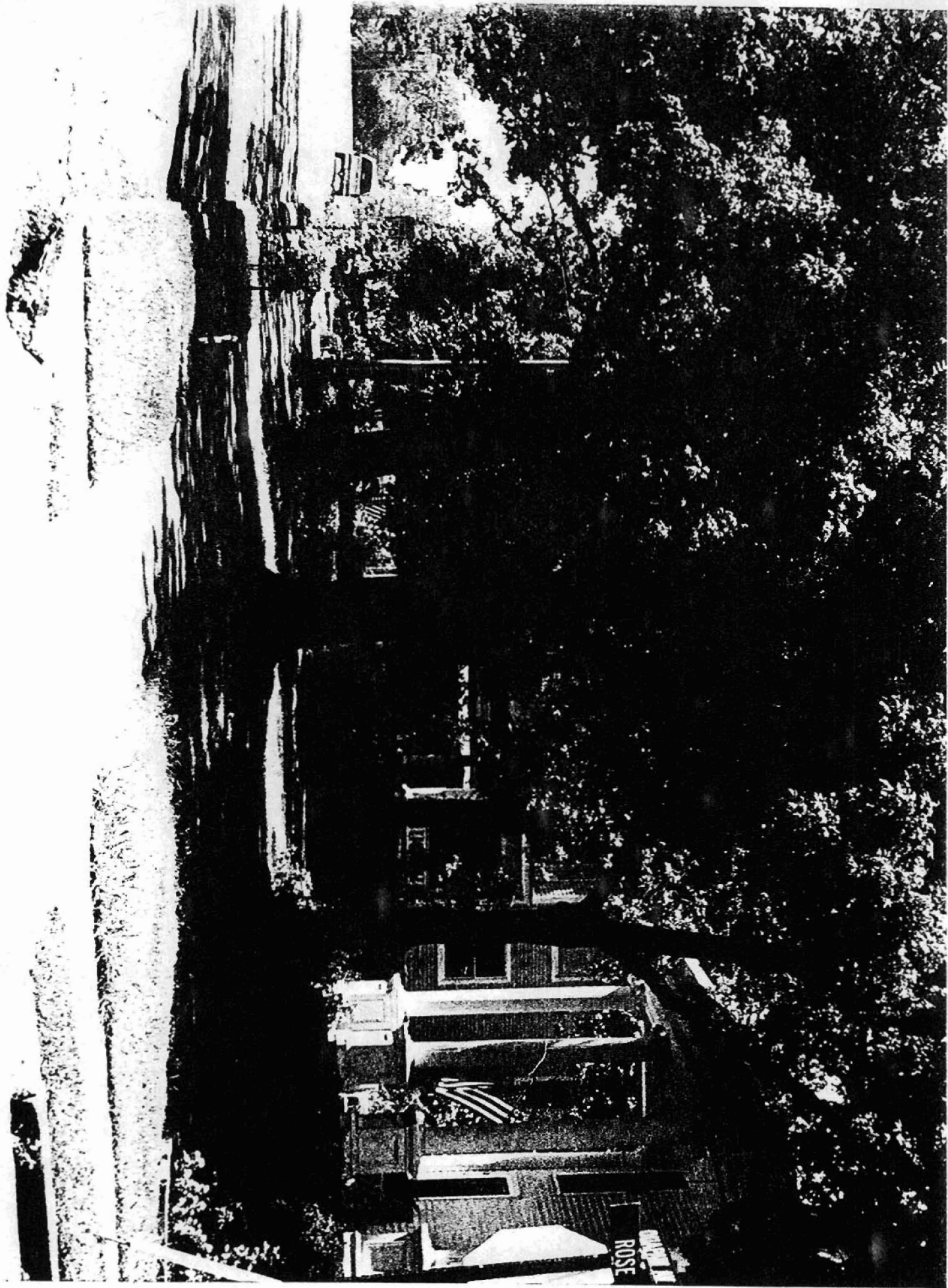














**Hot Springs  
National Park  
West Mountain**



