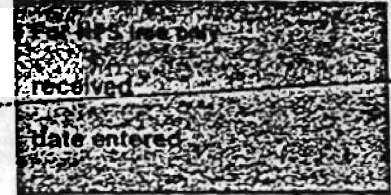


**National Register of Historic Places  
Inventory—Nomination Form**



Continuation sheet 47

Item number 1, 2, 4, 6, & 10 Page 1

**INDIVIDUAL DATA SHEET**

General Description

Code: GA-024

Congressional District: Third

Name: Wade Building

Current Owner: Arlington Hotel Co., Inc.

Address: 231 Central  
Hot Springs, Arkansas

Address: c/o R. D. Ashworth  
Box 389

County: Garland

Little Rock, Arkansas 72203

Architectural Information

Architectural Firm: Thompson, Sanders, and Ginocchio

Date of Construction: 1927

Stylistic Influence: Classical Revival

Original Use: Commercial

Present Use: Commercial

Geographical Information

UTM Reference: 15 495090/3819280

Acreage: Less than one

Verbal Boundary Description: Hot Springs Reservation  
Block 126, pt. lts. 6 & 7

Condition

Excellent  
 Good  
 Fair

Deteriorated  
 Ruins  
 Unexposed

Unaltered  
 Altered

United States Department of the Interior  
National Park Service

National Register of Historic Places  
Inventory—Nomination Form

For Review only
received
date entered

Continuation sheet 48

Item number 7 &amp; 8

Page 2

Code: GA-024

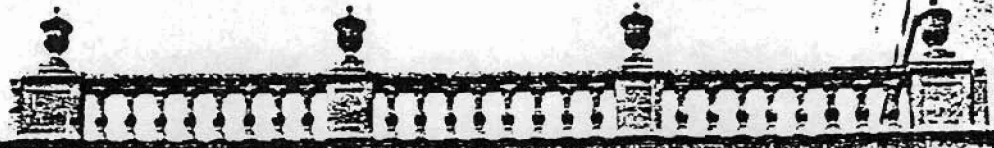
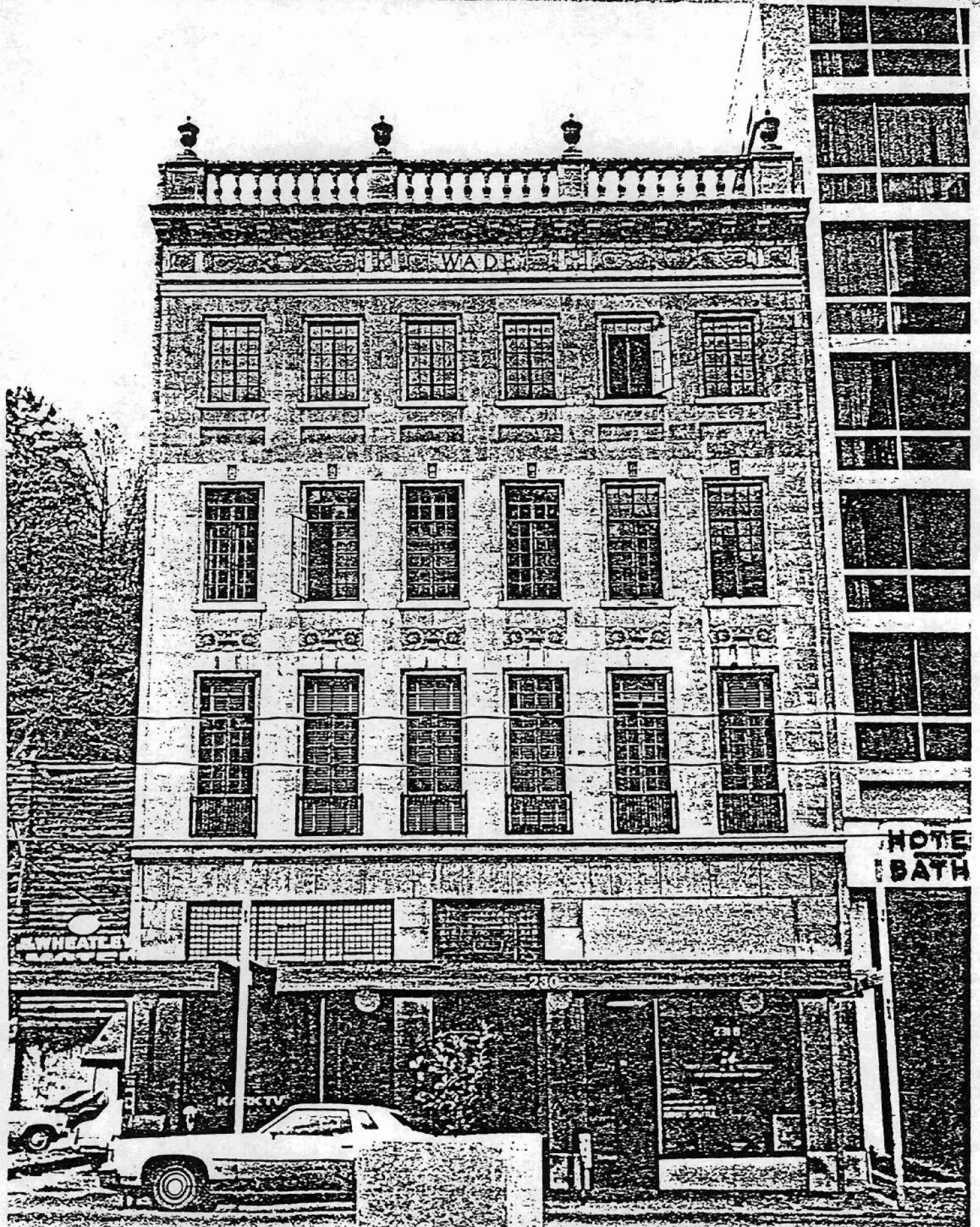
(231 Central, Hot Springs, AR)

Physical Description

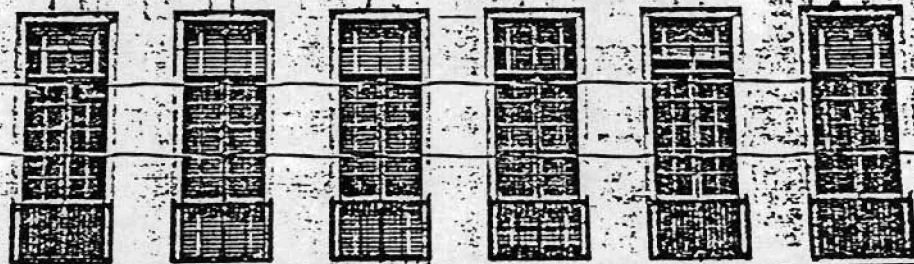
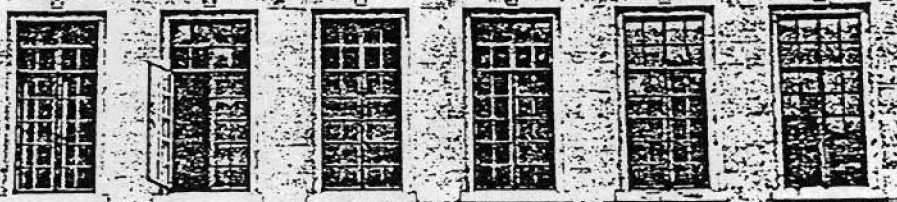
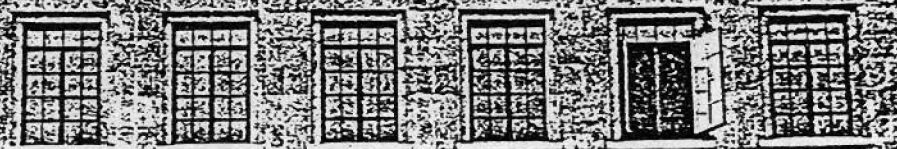
An attractive symmetry, finely wrought decorative details, and a sense of proportion characterize this handsome brick building with dressed stone facade on Hot Spring's main Street. The four-story rectangular structure with flat roof is capped by a parapet with urn-shaped balusters interspersed with plinths decorated with urns. The ground floor facade features large plate glass windows with multi-paned transoms; the transition from the ground level to upper stories is marked by a simple stone cornice. The three upper stories are characterized by ranges of single casement windows which grow shorter as they ascend and are decorated with correspondingly simpler details. The longer second story windows are enriched with decorative metal grilles at their bases rendering a balcony effect. The shorter windows of the second floor are underscored with decorative carved stone panels in a foliate and urn motif. The small windows of the top floor are underscored with simple recessed stone panels. Just beneath the parapet a decorative frieze appears which is enriched with foliate carvings of classical inspiration and a central panel inscribed with "Wade". Curved block modillions line the simple cornice. The double leaf oak door features plate glass panels and a neo-classical motif metal grille in the transom.

Statement of Significance

Designed in 1927 by the Thompson, Sanders and Ginocchio firm, the Wade Clinic on Central Avenue in Hot Springs is characterized by its finely tuned classical details. The four-story building features an unusually elegant sense of proportion. Delicate decorative details include carved stone panels above the second story windows, and a decorative frieze beneath the parapet which features urn-shaped balusters interspersed with plinths decorated by urns. The Wade Clinic presents a genteel appearance on Hot Springs' major historical thoroughfare.



THE WADSWORTH



HOTEL  
BATH

WHEATLEY  
BATH

280

280

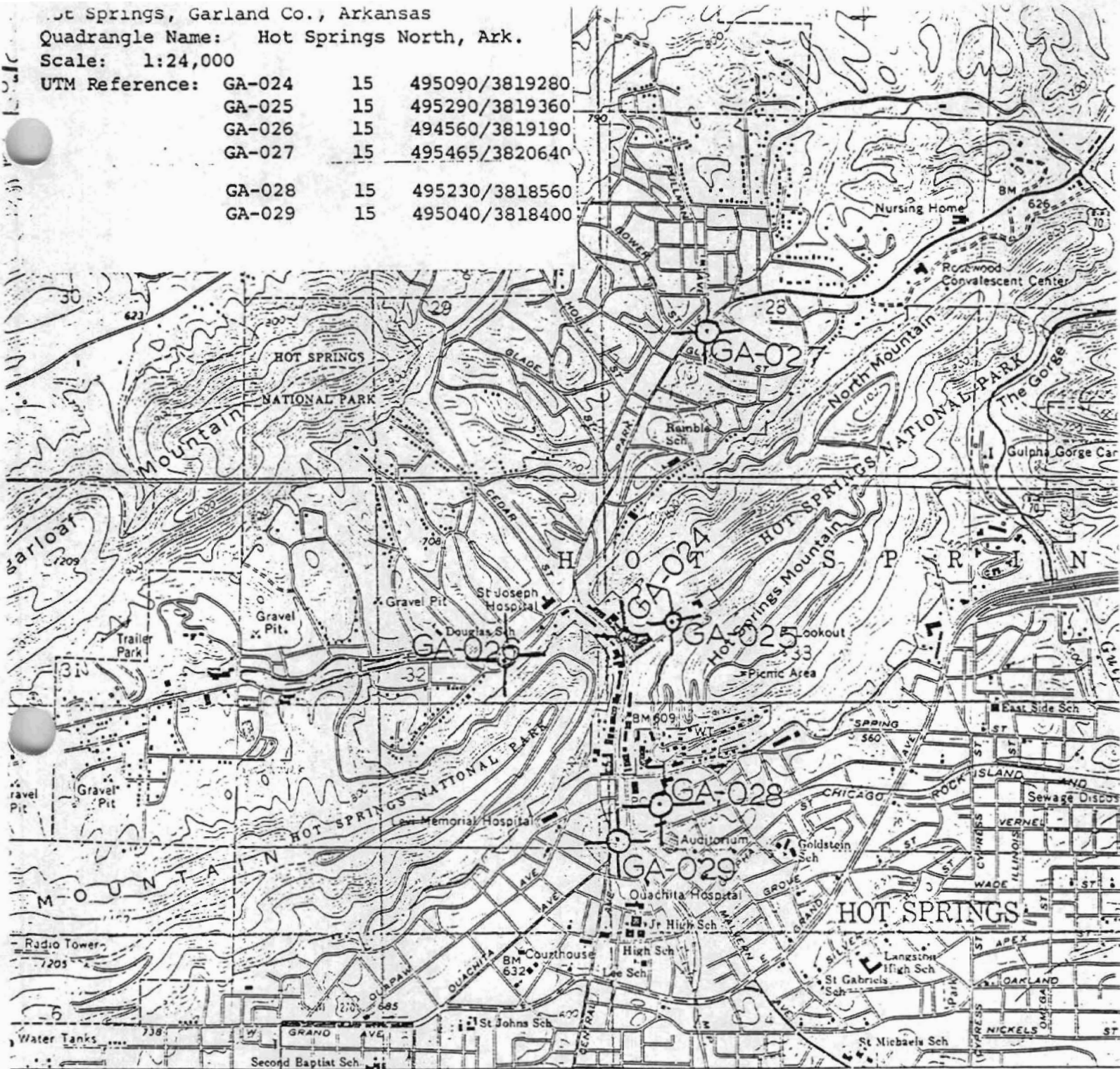
KATV



Hot Springs, Garland Co., Arkansas  
 Quadrangle Name: Hot Springs North, Ark.

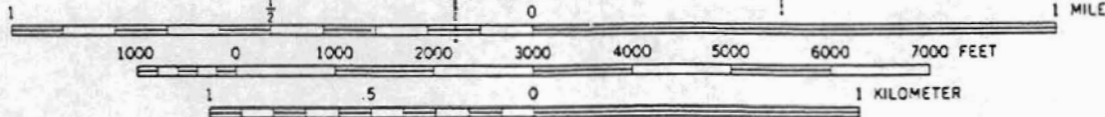
Scale: 1:24,000

UTM Reference:	GA-024	15	495090/3819280
	GA-025	15	495290/3819360
	GA-026	15	494560/3819190
	GA-027	15	495465/3820640
	GA-028	15	495230/3818560
	GA-029	15	495040/3818400



93 (HOT SPRINGS SOUTH) 7352 1 NE 495 2'30" 497  
 HEMP WALLACE (VIA U.S. 70) 10 MI. LAKE HAMILTON 7 MI. ARK DELPHIA 17 MI. LAKE CATHERINE 4 MI. VALVERN 22 MI.

SCALE 1:24 000



CONTOUR INTERVAL 20 FEET  
 NATIONAL GEODETIC VERTICAL DATUM OF 1929



THIS MAP COMPLIES WITH NATIONAL MAP ACCURACY STANDARDS  
 FOR SALE BY U.S. GEOLOGICAL SURVEY, DENVER, COLORADO 80225, OR RESTON, VIRGINIA 22092  
 AND ARKANSAS GEOLOGICAL COMMISSION, LITTLE ROCK, ARKANSAS 72204  
 A FOLDER DESCRIBING TOPOGRAPHIC MAPS AND SYMBOLS IS AVAILABLE ON REQUEST