

# United States Department of the Interior National Park Service National Register of Historic Places Registration Form

LISTED  
5-5-88

This form is for use in nominating or requesting determinations of eligibility for individual properties or districts. See instructions in *Guidelines for Completing National Register Forms* (National Register Bulletin 16). Complete each item by marking "x" in the appropriate box or by entering the requested information. If an item does not apply to the property being documented, enter "N/A" for "not applicable." For functions, styles, materials, and areas of significance, enter only the categories and subcategories listed in the instructions. For additional space use continuation sheets (Form 10-900a). Type all entries.

### 1. Name of Property

historic name Jones School  
other names/site number Jones School

### 2. Location

street & number Linwood and Hobson Avenues N/A  not for publication  
city, town Hot Springs N/A  vicinity  
state Arkansas code 05 county Garland code 051 zip code 71901

### 3. Classification

Ownership of Property	Category of Property	Number of Resources within Property	
<input type="checkbox"/> private	<input checked="" type="checkbox"/> building(s)	Contributing	Noncontributing
<input checked="" type="checkbox"/> public-local	<input type="checkbox"/> district	<u>1</u>	_____ buildings
<input type="checkbox"/> public-State	<input type="checkbox"/> site	_____	_____ sites
<input type="checkbox"/> public-Federal	<input type="checkbox"/> structure	_____	_____ structures
	<input type="checkbox"/> object	_____	_____ objects
		_____	_____ Total

Name of related multiple property listing: N/A  
Number of contributing resources previously listed in the National Register N/A

### 4. State/Federal Agency Certification

As the designated authority under the National Historic Preservation Act of 1966, as amended, I hereby certify that this  nomination  request for determination of eligibility meets the documentation standards for registering properties in the National Register of Historic Places and meets the procedural and professional requirements set forth in 36 CFR Part 60. In my opinion, the property  meets  does not meet the National Register criteria.  See continuation sheet.

Cathryn A. Buford 3-25-88  
Signature of certifying official Date  
Arkansas Historic Preservation Program  
State or Federal agency and bureau

In my opinion, the property  meets  does not meet the National Register criteria.  See continuation sheet.

N/A  
Signature of commenting or other official Date  
State or Federal agency and bureau

### 5. National Park Service Certification

I, hereby, certify that this property is:

entered in the National Register.  
 See continuation sheet.

determined eligible for the National Register.  See continuation sheet.

determined not eligible for the National Register.

removed from the National Register.

other, (explain:)

Signature of the Keeper Date of Action

## 6. Function or Use

Historic Functions (enter categories from instructions)

Education: school

Current Functions (enter categories from instructions)

Education: school

## 7. Description

Architectural Classification  
(enter categories from instructions)

Classical Revival

Materials (enter categories from instructions)

foundation concrete

walls brick

roof asphalt

other

Describe present and historic physical appearance.

### SUMMARY

Jones Elementary School, constructed in Hot Springs (Garland Co.) in 1913, is a remarkably well-preserved example of the Neo-Classical style. A three-story structure of red and beige brick and concrete, the building makes reference to diverse historic styles, employing a blend of Classical, Arts and Crafts, and eclectic elements in its exterior detailing. A 1950 addition on the south side of the building was connected to the original via a breezeway, thereby largely preserving the integrity of the original south facade. A bell house is located on the northwest corner of the site; it was constructed at the same time the main building was built, and originally housed a well. The interior of the main building is largely preserved, and contains many of the original finish materials.

### ELABORATION

The exterior is characterized by four symmetrical facades, each with a central projecting entry bay, and a tripartite horizontal ordering system. A red brick course wraps the entire building at the lower level, distinguishing the basement level and forming the base of the building. A concrete header separates the red brick course from the beige brick course, which covers the wall from header to parapet. The second and third floors make up the compositional middle of the building. The top of the building is the roof parapet, which is separated from the "middle" by a concrete cornice. On each facade, all windows are vertically aligned in columns. All windows are double-hung unless described otherwise. The building features an "I" plan footprint, with the main axis oriented north-south. Stairs are located in the north and south ends of the main axis. On both the east and west sides, the projecting end bays of the "I" plan are unfenestrated and bear inset concrete decorative headers, continuing the ordering lines for second the third level windows. A stepped parapet occurs at the center of each of these bays for added emphasis.

The main facade faces east on Linwood Avenue. The center of the facade is emphasized by the projecting entry bay, which is two stories in height, and by ziggurat-stepping in the parapet. The entry portico features a doubled column and pilaster arrangement, flanking the door and supporting an architrave with a flattened arch, bearing the "Jones Public School" legend. The doorway itself is an arched opening with double doors and a fixed-glass arched transom, divided

See continuation sheet

United States Department of the Interior  
National Park Service

## National Register of Historic Places Continuation Sheet

Section number 7 Page 2

---

vertically into three parts. The doors follow the tripartite pattern; each door contains three long, narrow, fixed-glass windows. Windows flank the entry portico, one each on both the basement and second levels, on both sides. A group of five six-over-six windows mark the center on the third level.

Flanking this central portion on each side is a single vertical column of six-over-six windows. To the north and south of these columns there are rows of five six-over-six windows on each level. Single vertical columns of narrow, four-over-four windows flank the five-window groups on each end. The projecting end bays occur to either side of this fenestrated portion.

The west facade is similar to the east in all aspects except the central projecting bay. On this facade, the bay projects for the entire height of the building and extends beyond the parapet, culminating in two chimney structures flanking a central pediment. These chimneys acted as smokestacks for the original coal-burning furnace. An entry portico identical to the east portico extends through the first two levels of the bay. The third level is marked by three six-over-six windows centered in the bay. To the south of the entry, a series of bin doors located on the basement level allowed for the delivery of coal.

The north and south facades are identical, with the exception of a later addition which is connected to the south entry via a breezeway. The addition is separated from the original building by a narrow space; none of the details of the original facade were covered or destroyed when the addition was built. Each of the north and south facades features an emphasis on the center, with projecting entry bays extending to two levels of the building, and a stepped parapet at the center. These entry bays feature pedimented porticos, supported by brick pilasters flanking the doors. Narrow four-over-four windows flank the portico on the second level, and are aligned with similar windows on the third level. The center is marked on the third level by a group of three six-over-six windows. Flanking the central portion are groups of five six-over-six windows on each level.

The interior layout consists of double-loaded corridors lined by classrooms and support spaces (offices, restrooms, etc.) with vertical circulation areas at the extreme north and south ends of the building, adjacent to the north and south entrances. Original interior finish materials include slate blackboards, wood flooring, original metal stairs and railings, radiators, mosaic tile flooring, wood fireplace mantels in the teachers' lounge and principal's office, and several original light fixtures in the restrooms. The building is still in use as a school.

United States Department of the Interior  
National Park Service

## National Register of Historic Places Continuation Sheet

Section number 7 Page 3

---

The bell house on the northwest corner of the site is a perfect square in plan, punctuated by portals centered in each side of the structure. These portals are now filled with decorative open grillwork, to prevent vandalism of the interior. A stepped parapet emphasizes the center of each side. The bell is housed by an open-sided, roofed structure centered on the roof. The exterior features a stuccoed wall treatment.

Stylistically, the Jones School represents an eclectic local interpretation of the Neo-Classical style, utilizing economical local materials.

**B. Statement of Significance**

Certifying official has considered the significance of this property in relation to other properties:

nationally  statewide  locally

Applicable National Register Criteria  A  B  C  D

Criteria Considerations (Exceptions)  A  B  C  D  E  F  G N/A

Areas of Significance (enter categories from instructions)  
Architecture

\_\_\_\_\_  
\_\_\_\_\_  
\_\_\_\_\_  
\_\_\_\_\_

Period of Significance  
1913

\_\_\_\_\_  
\_\_\_\_\_

Significant Dates  
1913

\_\_\_\_\_  
\_\_\_\_\_

Cultural Affiliation  
N/A

\_\_\_\_\_  
\_\_\_\_\_

Significant Person  
N/A

\_\_\_\_\_  
\_\_\_\_\_

Architect/Builder

Oklahoma Quarries and Construction Company

\_\_\_\_\_  
\_\_\_\_\_

State significance of property, and justify criteria, criteria considerations, and areas and periods of significance noted above.

SUMMARY

Jones School in Hot Springs is being nominated under Criterion C for its significance as a local Neo-Classical example of early-twentieth century architecture. The building is the oldest school in Hot Springs, and has been in continuous use as such a facility since its doors opened in 1913.

ELABORATION

The city of Hot Springs has a wide variety of historic resources, due primarily to its popularity as a resort town during the early twentieth century. The Central Avenue Historic District (NR 6/25/85) and Bathhouse Row (NR 11/13/74, NHL 5/28/87), as well as several individual commercial and residential structures, contribute to the architectural panorama of the city. Educational buildings constructed in the pre-World War I era testify to the importance of education to the community. Hot Springs High School (NR 1/28/88) is an impressive Late Gothic Revival building, and Jones School, with evidence of Neo-Classical influences, provides an architectural complement and contrast to it. Although an auditorium was added in 1950, its sensitive connection to the north elevation by an enclosed breezeway (which leaves the classical detailing of the entrance visible) does not hamper the building's integrity. Original blackboards, radiators, and wood and mosaic tile floors are still in use.

Jones School is a source of great pride to the people of Hot Springs and its many successful graduates. It is a significant local example of a little-altered institutional building of its type and period.

See continuation sheet

**9. Major Bibliographical References**

1. 'Jones Elementary School: A Century Passed'  
Special supplement to the Hot Springs Sentinel-Record, May 22, 1977
2. The Record, Garland County Historical Society  
24th Edition, 1983
3. Interview with Ms. Mamie Ruth Abernathy  
November, 1987

Previous documentation on file (NPS): N/A

- preliminary determination of individual listing (36 CFR 67) has been requested
- previously listed in the National Register
- previously determined eligible by the National Register
- designated a National Historic Landmark
- recorded by Historic American Buildings Survey # \_\_\_\_\_
- recorded by Historic American Engineering Record # \_\_\_\_\_

See continuation sheet

Primary location of additional data:

- State historic preservation office
- Other State agency
- Federal agency
- Local government
- University
- Other

Specify repository: \_\_\_\_\_

**10. Geographical Data**

acreage of property 1.5 acres

UTM References

A 15 494400 3817120  
Zone Easting Northing

C \_\_\_\_\_

B \_\_\_\_\_  
Zone Easting Northing

D \_\_\_\_\_

See continuation sheet

Verbal Boundary Description

The nominated property occupies city block 29, lots 1-6, in the South Hot Springs Subdivision.

See continuation sheet

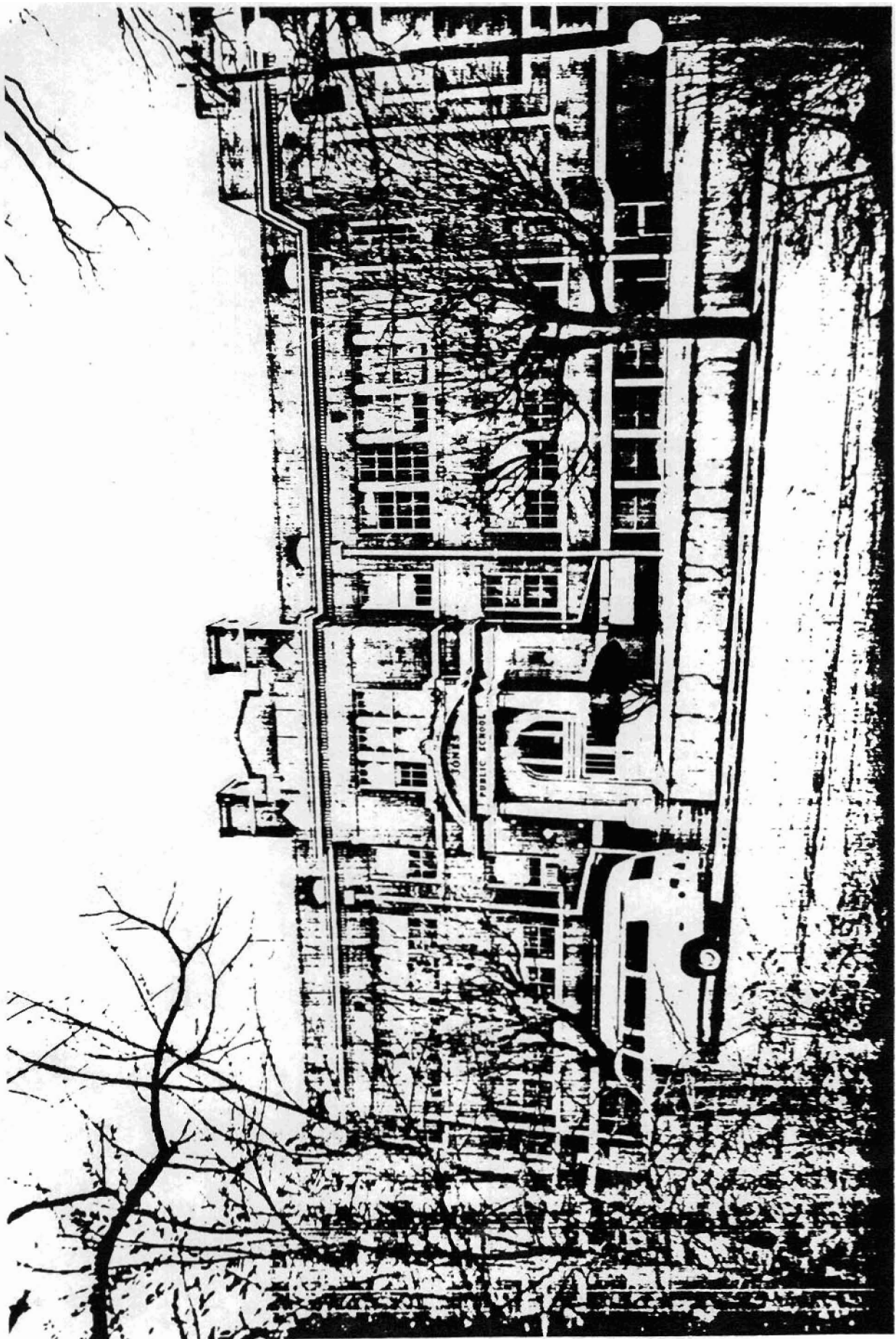
Boundary Justification

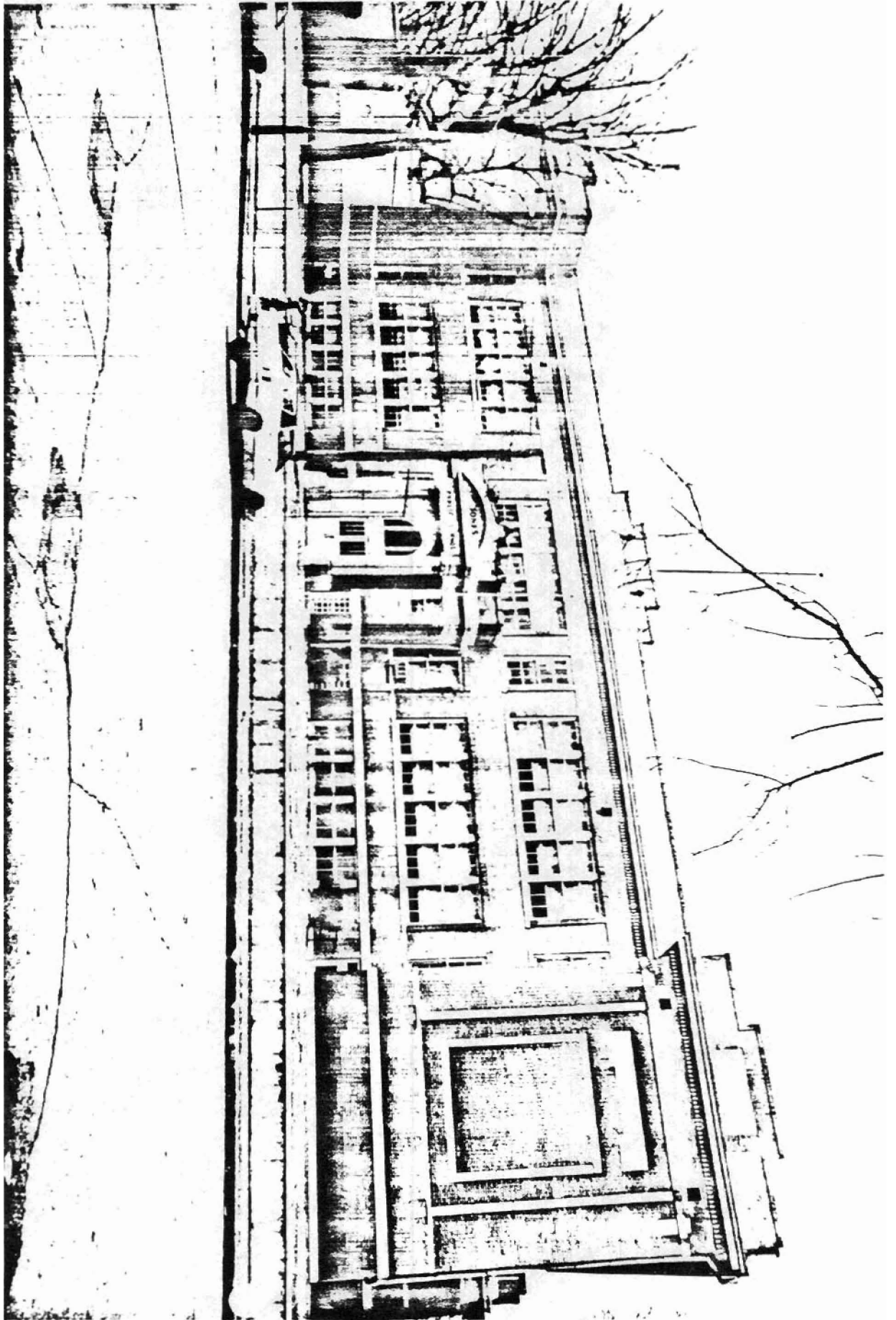
The boundary includes the entire city block that has historically been associated with the property.

See continuation sheet

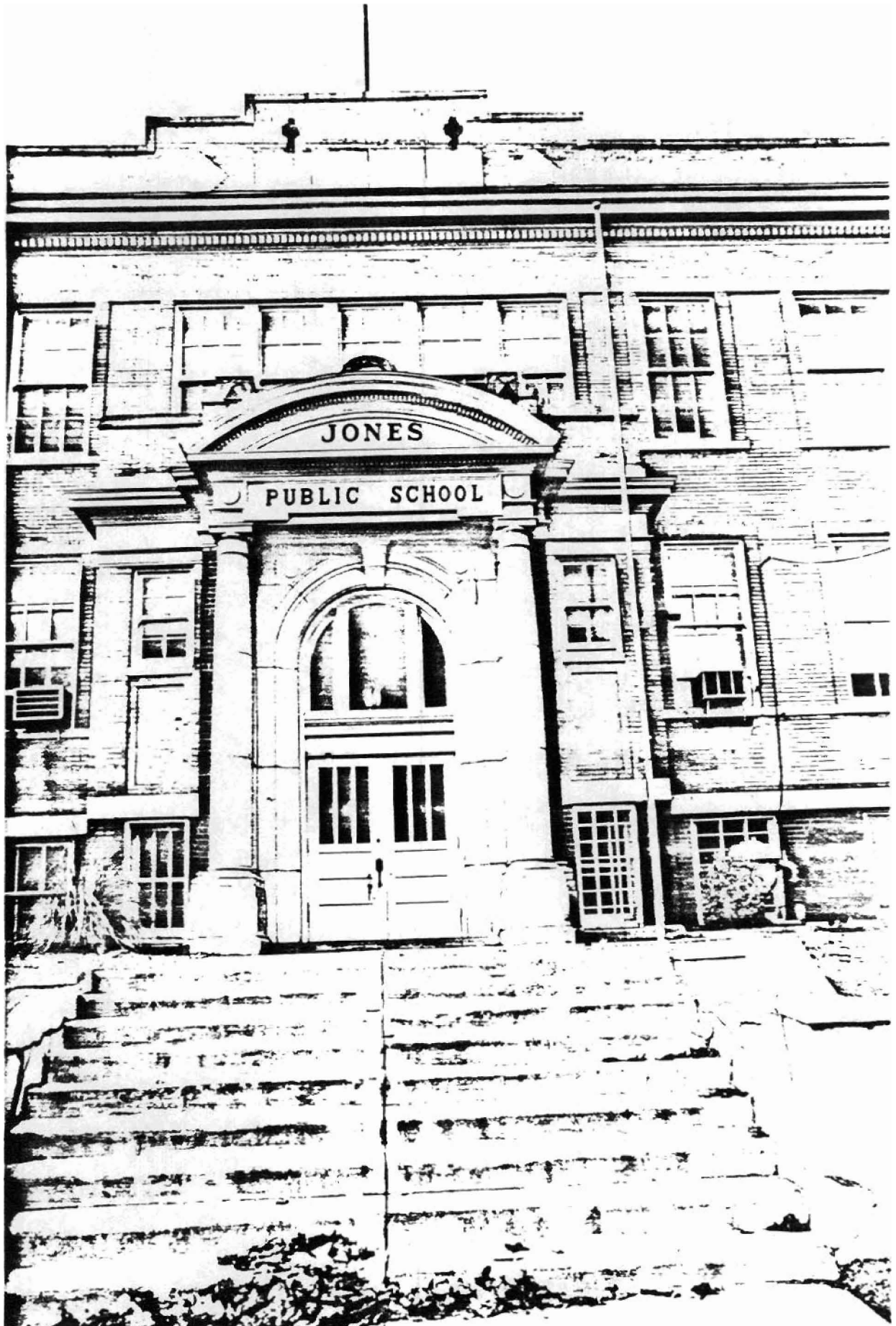
**11. Form Prepared By**

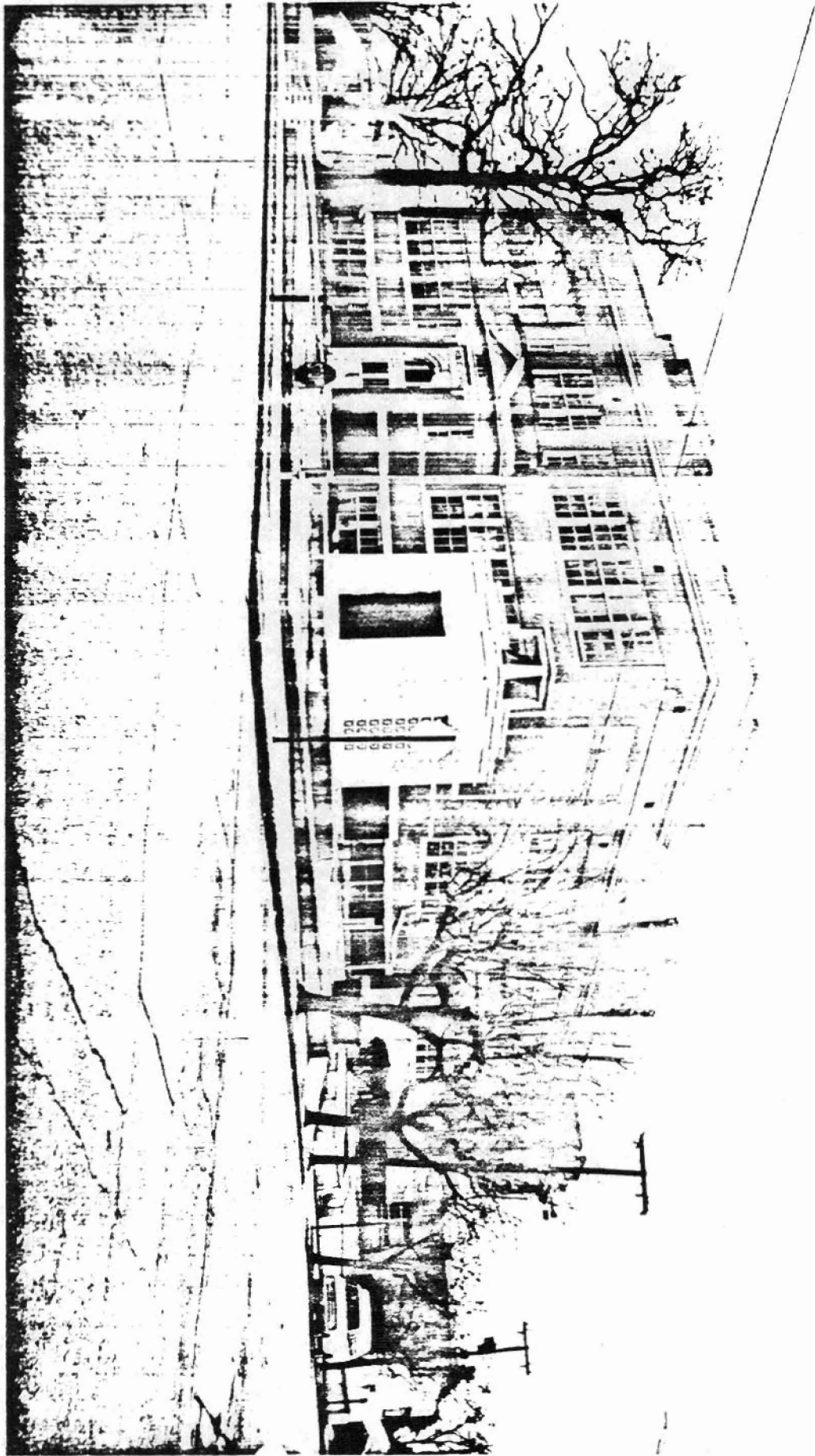
name/title \_\_\_\_\_  
organization \_\_\_\_\_ date \_\_\_\_\_  
street & number \_\_\_\_\_ telephone \_\_\_\_\_  
city or town \_\_\_\_\_ state \_\_\_\_\_ zip code \_\_\_\_\_

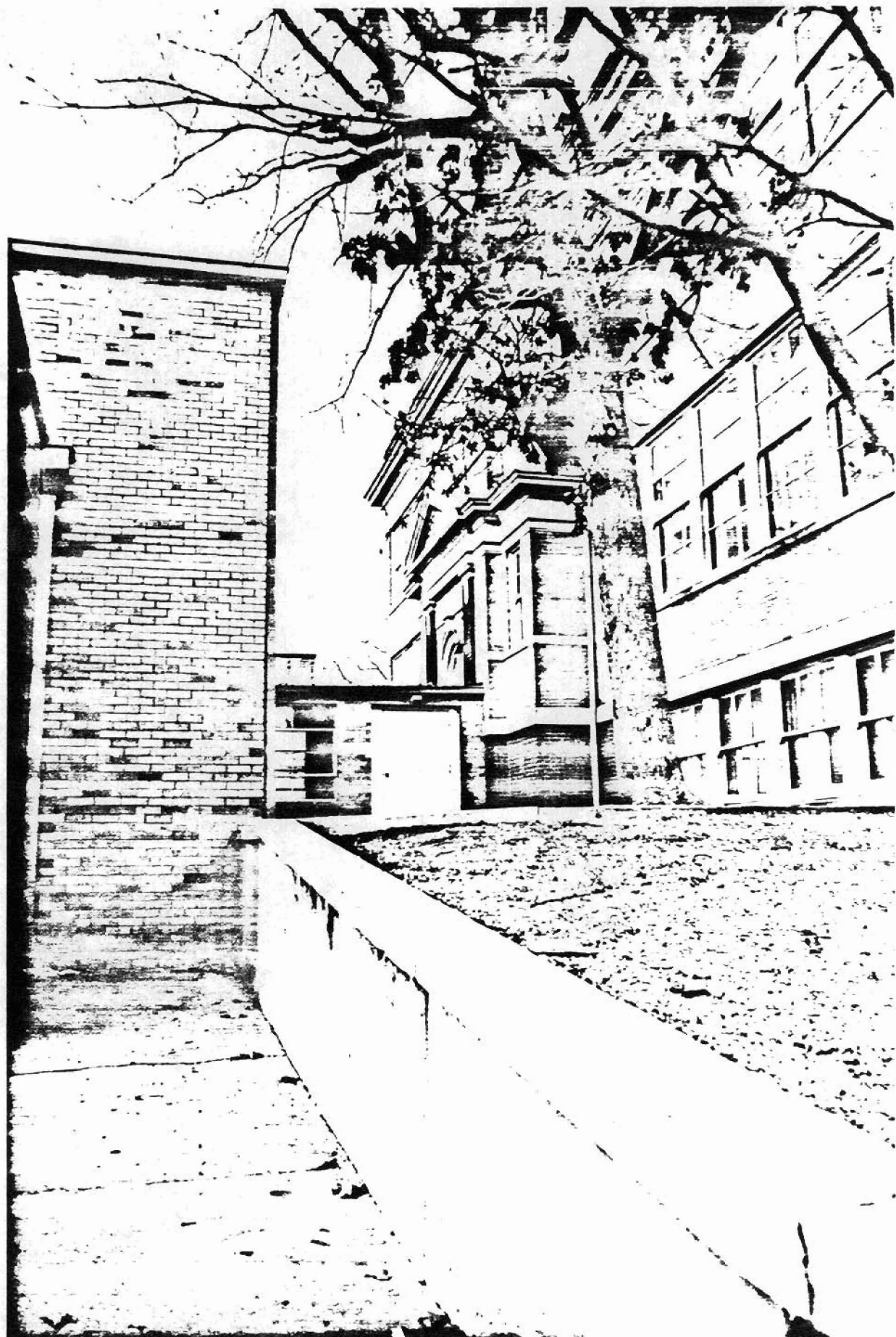


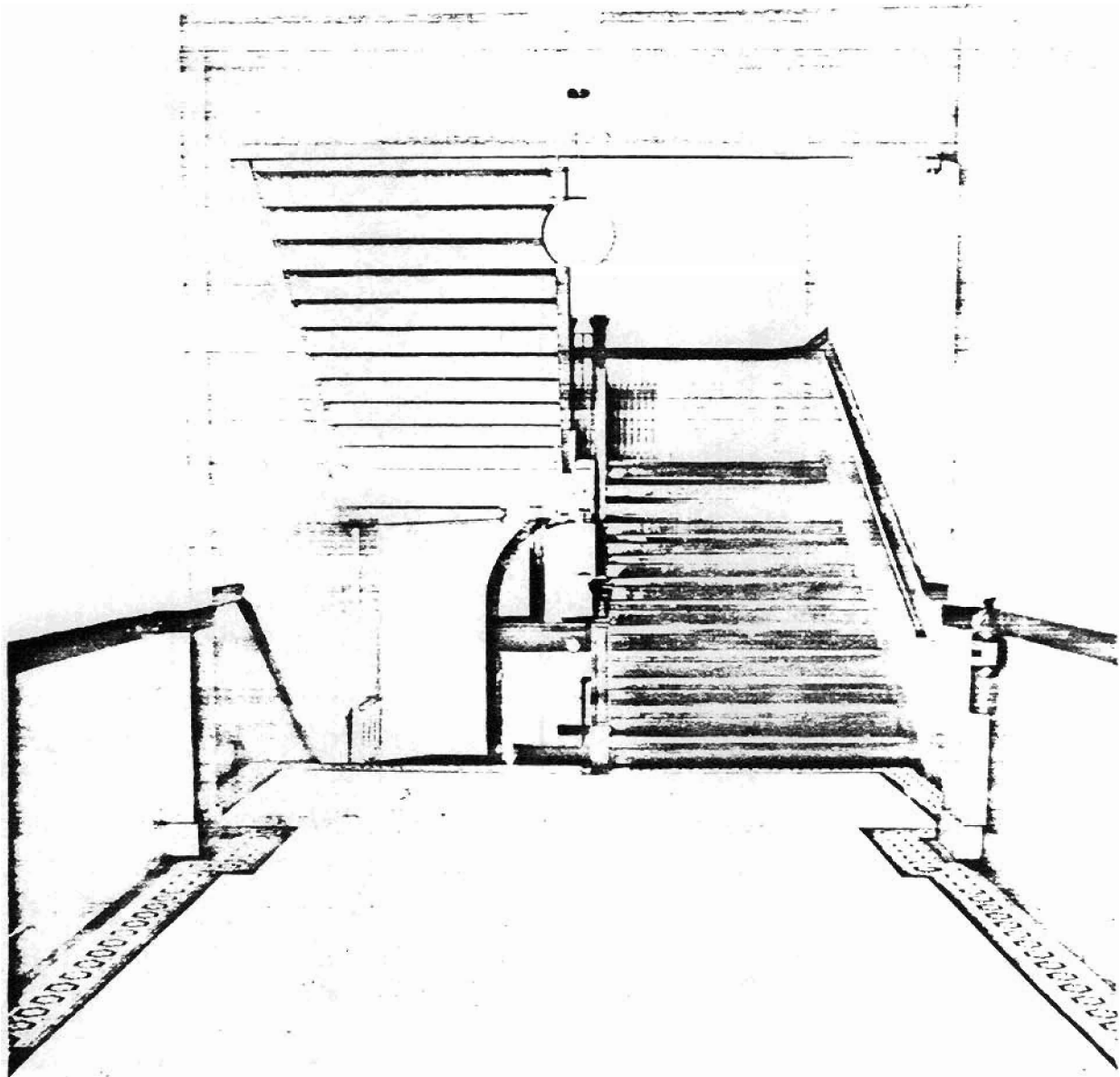














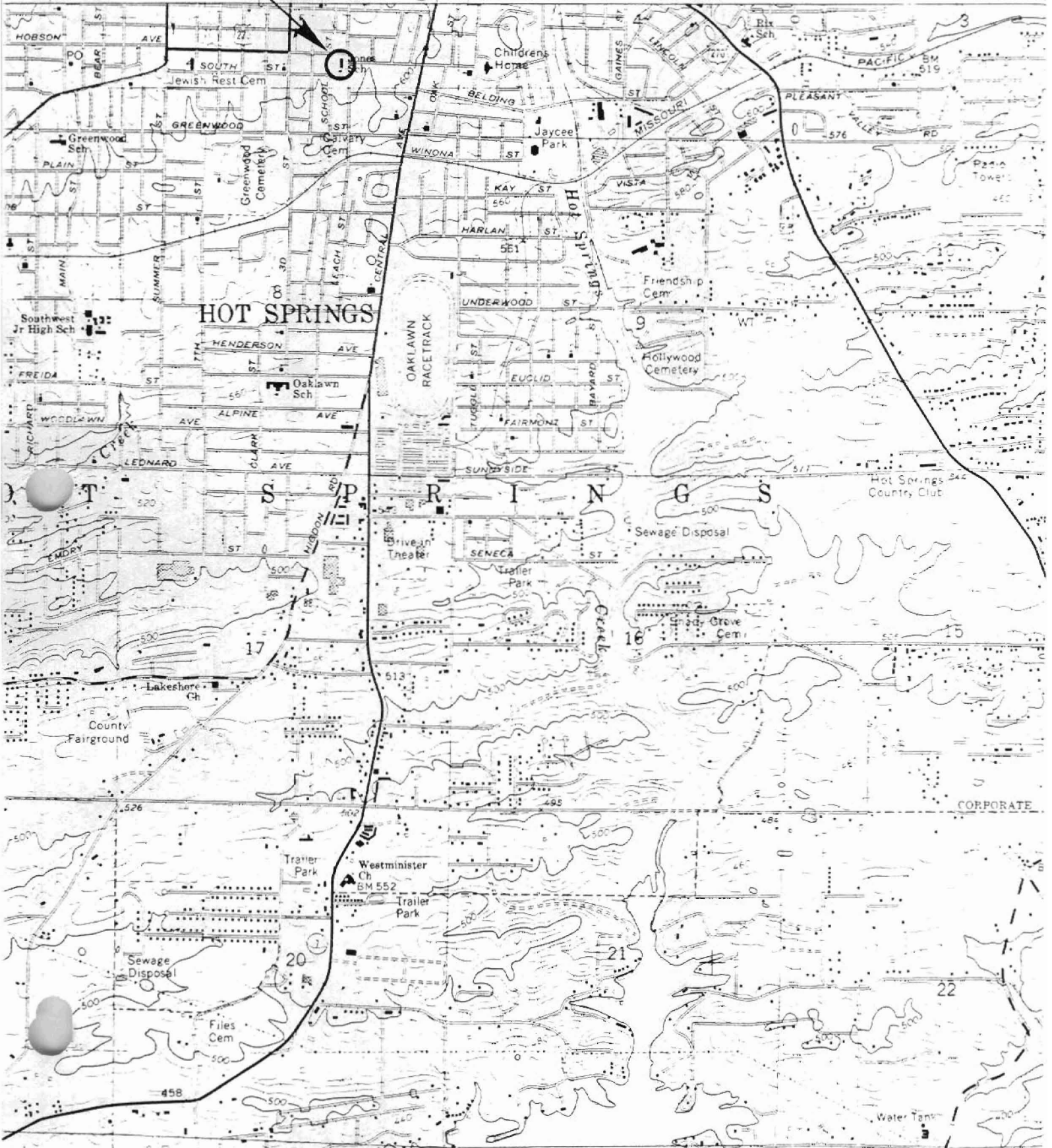
# Jones School

Hot Springs, Garland Co.,  
Quad Hot Springs South  
Scale: 1:24000

UTM - 15/494400/3817120

LITTLE ROCK VIA U.S. 70 53 MI  
1 MI TO JUNC. U.S. 70 & 270 7353 II SE  
(HOT SPRINGS NORTH) 8 MI TO ARK 5  
HOT SPRINGS (CH.) 0.4 MI

493 496 2'30" 497 1:630,000 FEET



United States Department of the Interior  
National Park Service

National Register of Historic Places  
Continuation Sheet

Section number \_\_\_\_\_ Page \_\_\_\_\_

SUPPLEMENTARY LISTING RECORD

NRIS Reference Number: 88000517

Date Listed: 5/5/88

Jones School  
Property Name

Garland County AR  
County State

N/A  
Multiple Name

-----  
This property is listed in the National Register of Historic Places in accordance with the attached nomination documentation subject to the following exceptions, exclusions, or amendments, notwithstanding the National Park Service certification included in the nomination documentation.

*Jimmy Schlauch*  
Signature of the Keeper

5/5/88  
Date of Action

\*\*\*\*\*  
Amended Items in Nomination:

Although it was described in the text as an early structure altered substantially with the addition of new panels, the bell tower on the corner of the property was not counted as it should have been as a non-contributing structure.

Total properties include one contributing building and one non-contributing structure.

Discussed and concurred in by Arkansas SHPO on May 6, 1988.

-----  
DISTRIBUTION:  
National Register property file  
Nominating Authority (without nomination attachment)