

United States Department of the Interior  
National Park Service

National Register of Historic Places  
Inventory—Nomination Form

For NPS use only  
received \_\_\_\_\_  
date entered \_\_\_\_\_

Continuation sheet 140

Item number 1, 2, 4, 6 & 10 Page 1

INDIVIDUAL DATA SHEET

General Description

Code: DE-015

Congressional District: fourth

Name: Thane House

Current Owner: Ben and Ann Landers

Address: Levy and First Streets  
Arkansas City, Arkansas

Address: Arkansas City, Arkansas 71630

County: Desha

Architectural Information

Architectural Firm: Thompson and Harding

Date of Construction: 1919

Stylistic Influence: Craftsman

Original Use: Residence

Present Use: Residence

Geographical Information

UTM Reference: 15 667025/3719860

Acreage: less than one

Verbal Boundary Description: Original Addition to Arkansas City  
Lot 15 to 29, Block C; Lot 17 to 22, Block 6  
Lot 23 to 28 Block 6

Condition

Excellent  
 Good  
 Fair

Deteriorated  
 Ruins  
 Unexposed

Unaltered  
 Altered

United States Department of the Interior  
National Park Service

National Register of Historic Places  
Inventory—Nomination Form

For NPS use only
received
date entered

Continuation sheet

141

Item number

Page 2

Code: DE-015

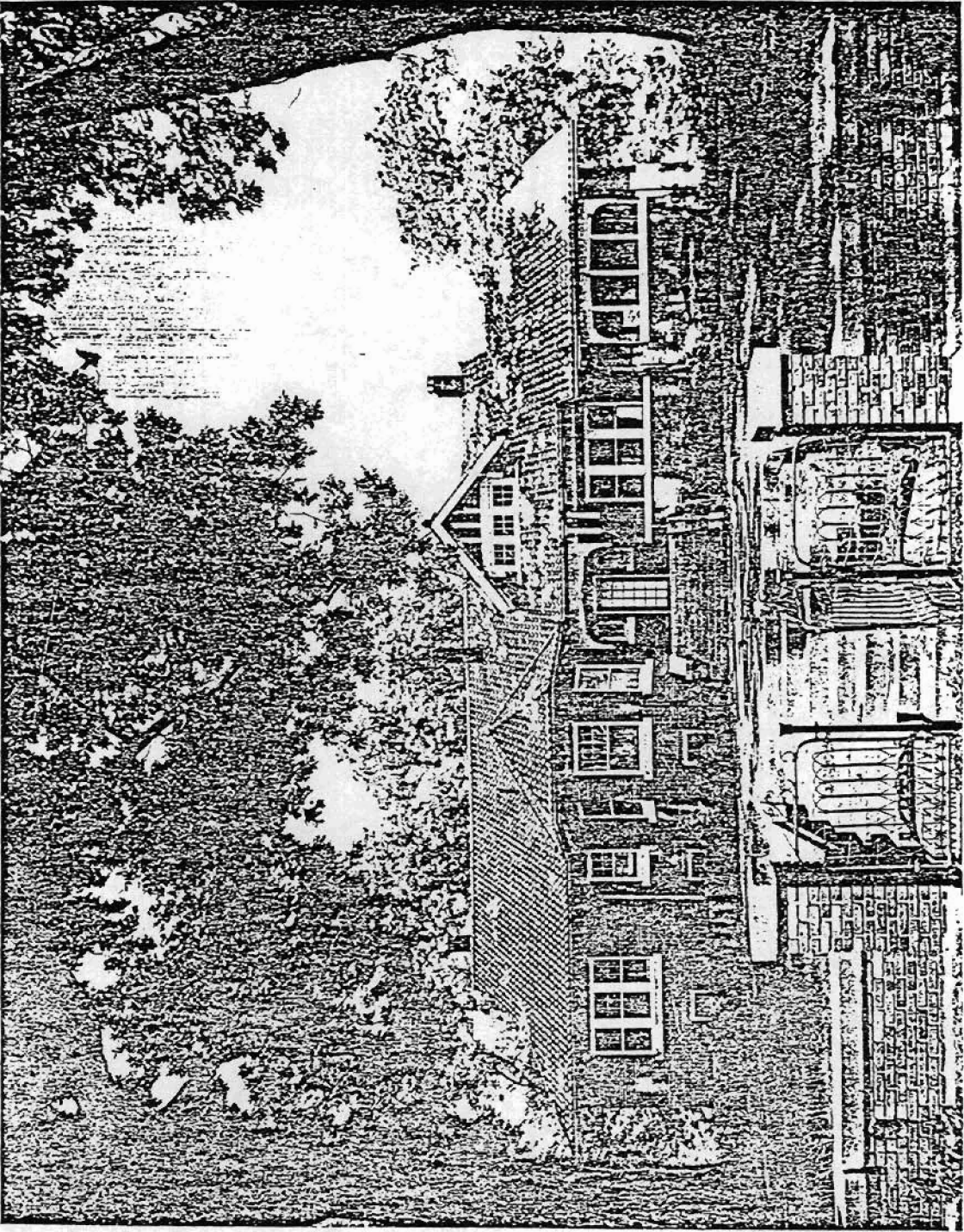
(Levy and First Streets, Arkansas City, AR)

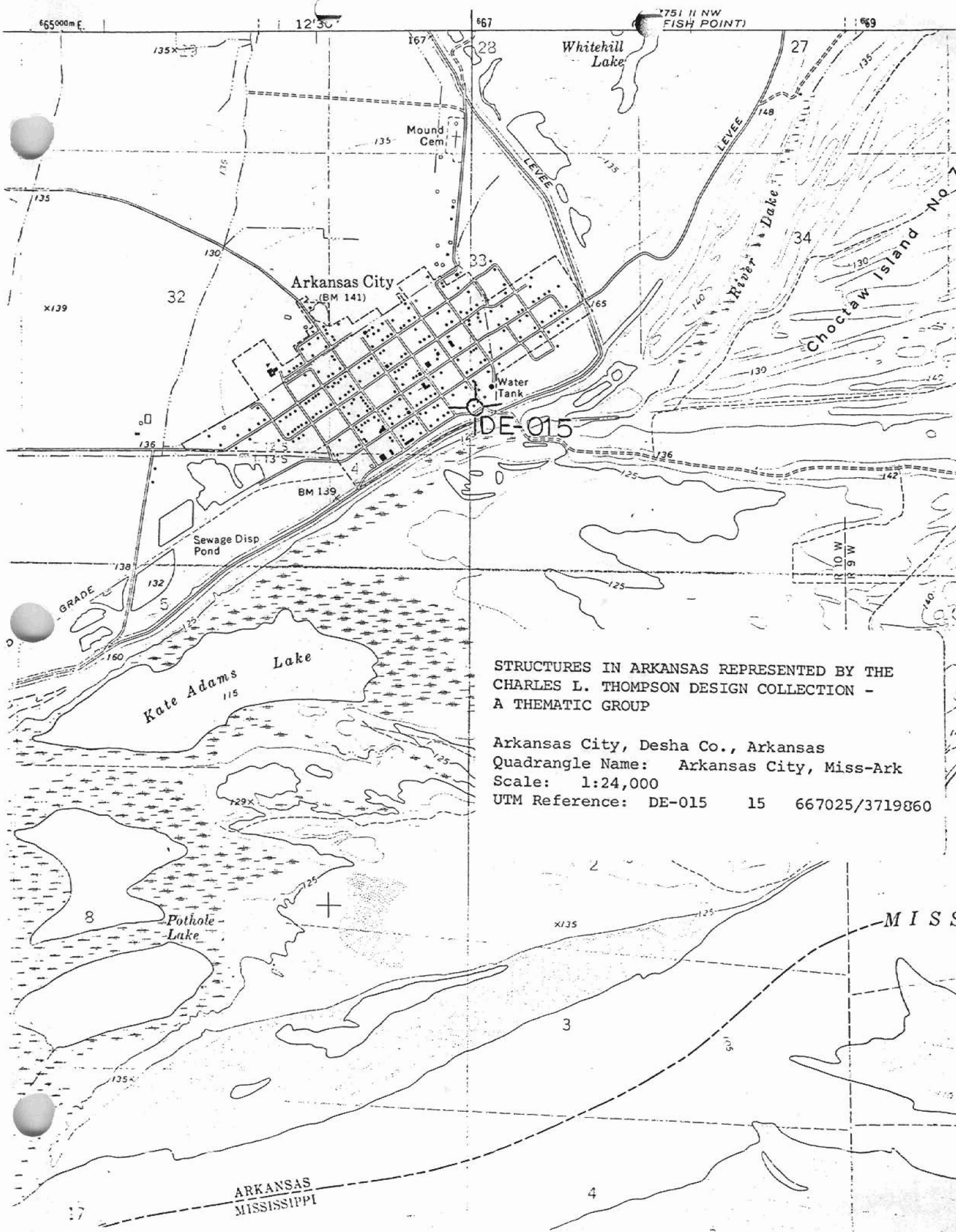
Physical Description

Occupying a spacious lot and shaded by the surrounding huge trees, this one-and-a-half story house with basement is characterized by a horizontal orientation. The spreading rectangular block of the house is capped by a tile gable end roof; on the northeast end a screened-in porch with a separate roof projects. The spreading, rectangular mass is capped by a tile gable roof and enlivened on the front elevation by a dormer with steep gable roof, a slightly projecting screened-in porch on the northeast end, and adjacent to the recessed entrance, by a prominent three-sided bay. The roofscape is enlivened by the roof of this bay which features a three-sided roof rising to a peak. The small front porch is open with only a low brick wall capped with cast stone defining it. Craftsman-influenced details include the exposed rafters, the pseudo half-timbering lining the dormer, and the large curved brackets which frame the entry and the screened-in porch opening. The front door features a full-length multi-paned window flanked by two short multi-paned sidelights. The sash windows have six-over-one lights.

Statement of Significance

Designed by the Thompson and Harding firm in 1919, the Thane House in Arkansas City is suited to its spectacular setting near the Mississippi River. The long, horizontal orientation of the Thane House is somewhat unusual in the Craftsman house designs represented in the collection of drawings. The horizontal emphasis was no doubt influenced by the river oriented setting. Located on a slightly elevated parcel of land adjacent to the Mississippi River, the Thane House is a spreading rectangular block of brick construction capped by a tile roof. The Thane House features one of the most spectacular settings of this group of properties.





STRUCTURES IN ARKANSAS REPRESENTED BY THE  
CHARLES L. THOMPSON DESIGN COLLECTION -  
A THEMATIC GROUP

Arkansas City, Desha Co., Arkansas  
Quadrangle Name: Arkansas City, Miss-Ark  
Scale: 1:24,000  
UTM Reference: DE-015 15 667025/3719860

ARKANSAS  
MISSISSIPPI