

HISTORIC RESOURCES OF DALLAS COUNTY
DALLAS COUNTY, ARKANSAS

ARKANSAS HISTORIC PRESERVATION PROGRAM

Survey Number DA-18

Owner Thomas Wynne, Jr.

Property Name Wynne House

Address 1724 Abernathy

Location Fordyce

Fordyce, AR 71742

Significant Date/s c. 1914

ARCHITECTURAL DESCRIPTION

Situated on a slightly elevated and spacious tree-shaded lot, the Wynne House faces Fourth Street in the city of Fordyce. The popular two-story frame Foursquare house with pyramid roof and overhanging eaves is seen here in a rather elaborate version. A chamfered bay crowned with a pedimented gable breaks forward to enliven the otherwise simple, boxy lines of the structure. A gabled dormer with gable returns and a Palladian window echo the pediment shape of the bay and further enrich the roofscape. The verticality of the house is offset by the long horizontal line created by the grand porch which wraps around three sides. Much of the decorativeness of the house is attributable to the Colonial Revival ornamentation of this porch. A full entablature with a dentil molding and overhanging cornice crowned with a balustrade of turned spindles is supported by Ionic columns. The floor level of the porch is similarly enclosed by a graceful balustrade of turned spindles. A broad flight of steps leading up to the elevated porch adds to the air of formality of this house.

STATEMENT OF SIGNIFICANCE

The Wynne House, situated on a main residential street in Fordyce, stands out significantly as Dallas County's purest Classical Revival residence. Atypical of the architectural development in Arkansas, there is little Classical Revival influence on the domestic structures of Dallas County. The impact of the Classical Revival is seen most often in the decorative elements existing in combination with Queen Anne elements on transitional structures. Because of general absence of the Classical Revival influence in the area the outstanding Wynne House is made even more significant.

Acres: less than 1

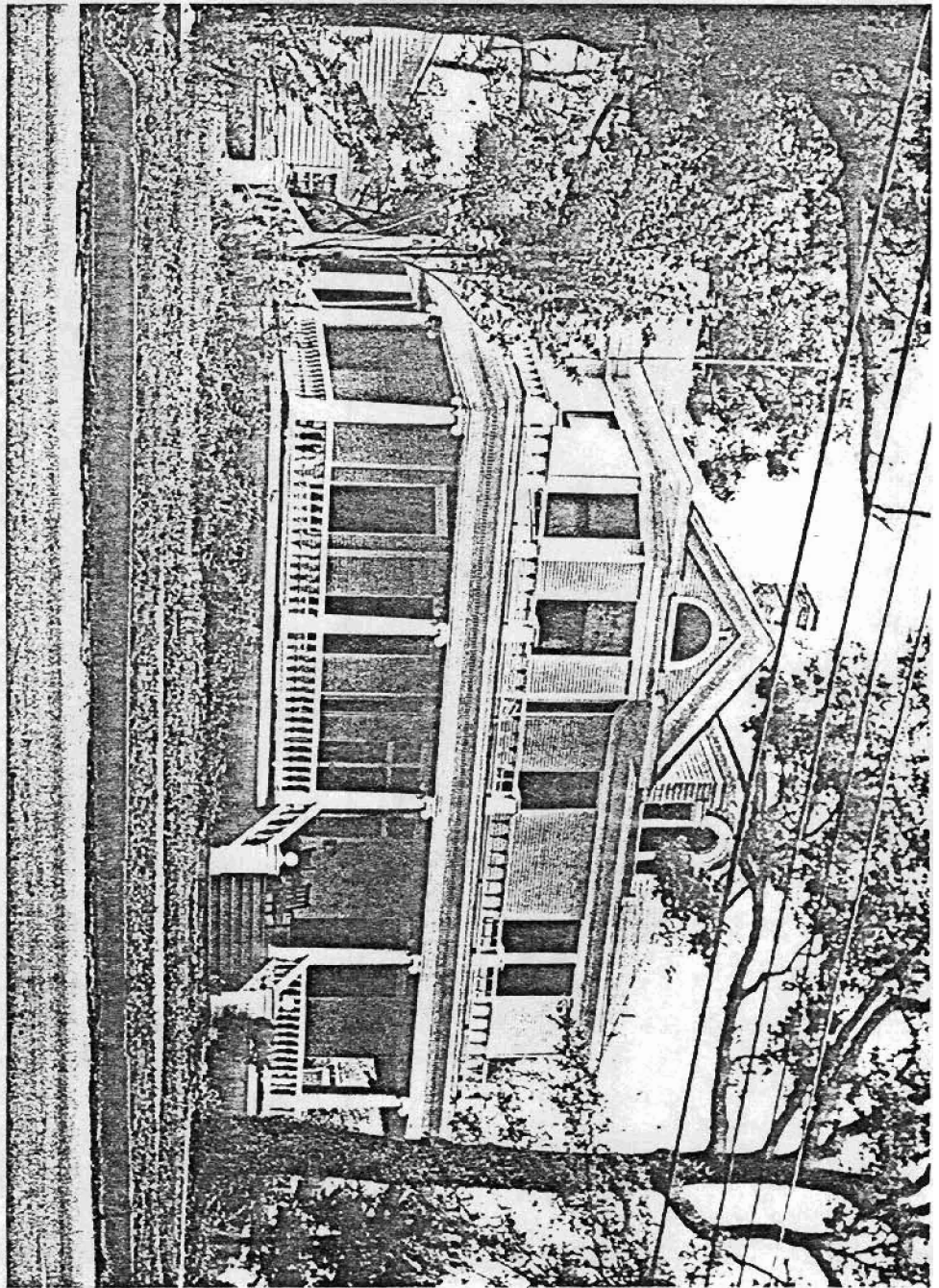
Quadrangle Name: Fordyce

Quadrangle Scale: 1:24000

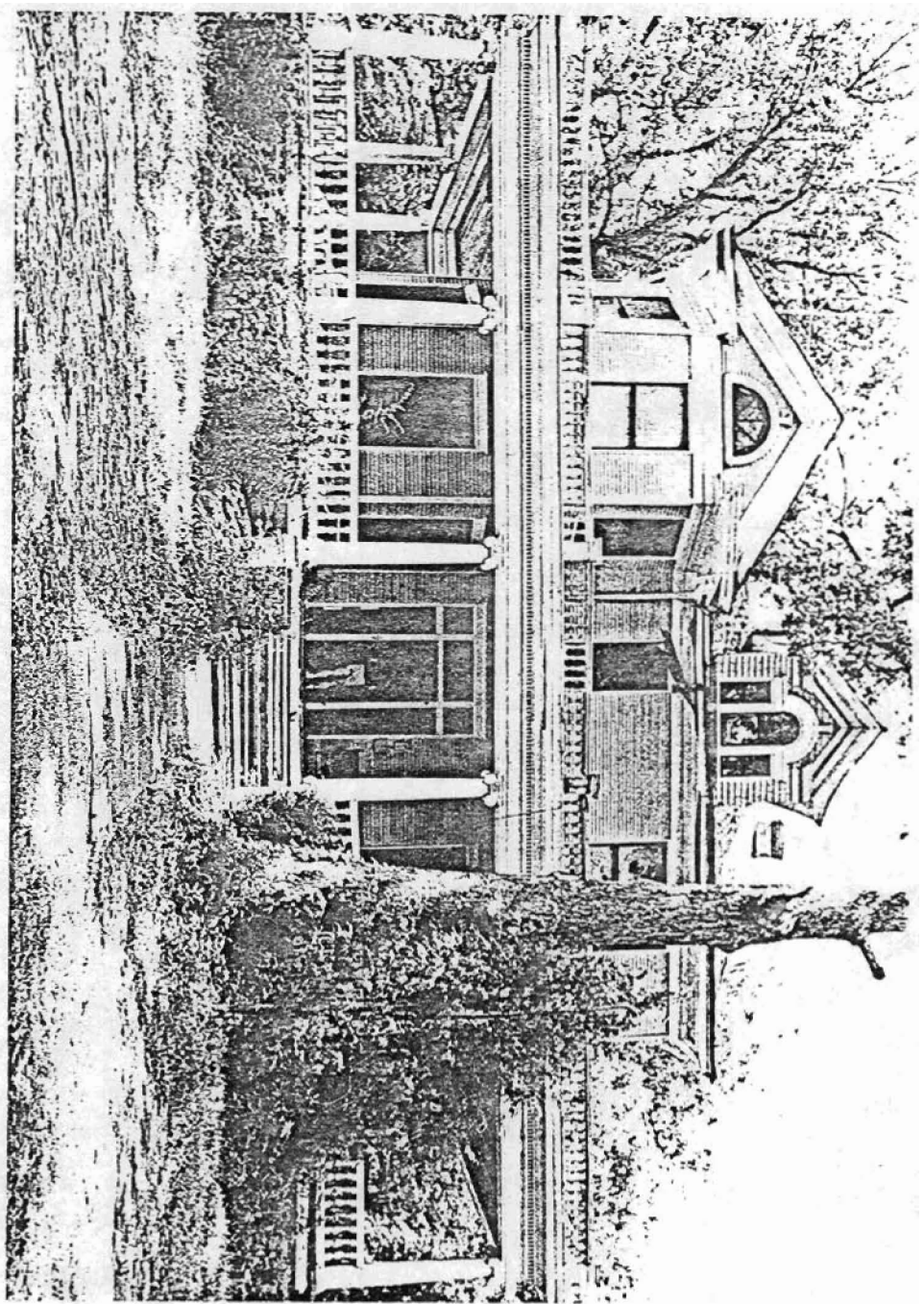
UTM Reference: 15 553990/374330

Verbal Boundary Description:

The nominated property located within Lot 48 of the Trammell Addition to Fordyce, is bounded on the south by Fourth Street, on the west by Pine Street and on the north and east by lines running parallel to and 50' from the north and east facades of the house.



DA-18
Wynne House
Sarah Brown, photographer
May 7, 1983
Negative on file at the AHPP
View from the Southwest



DA-18
Wymne House
Sarah Brown, photographer
June 18, 1982
Negative on file at the AHPP
View from the South