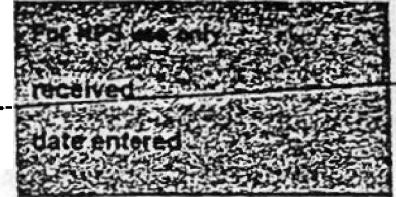


United States Department of the Interior
National Park Service

National Register of Historic Places
Inventory—Nomination Form



Continuation sheet 39

Item number 1, 2, 4, 6, & 10 Page 1

INDIVIDUAL DATA SHEET

General Description

Code: DA-011

Congressional District: Fourth

Name: Fordyce Home Accident Ins. Co.

Current Owner: Lyon Readi-Mix, Inc.

Address: 300 Main
Fordyce, Arkansas

c/o William Lyon
Address: Fordyce, Arkansas 71742

County: Dallas

Architectural Information

Architectural Firm: Charles Thompson

Date of Construction: 1908

Stylistic Influence: Romanesque/Classical Revival

Original Use: Insurance Company

Present Use: Commercial- shops

Geographical Information

UTM Reference: 15 554420/3741380

Acreage: Less than one

Verbal Boundary Description: Original Town of Fordyce
S. 40' of lt. 6, Block 4

Condition

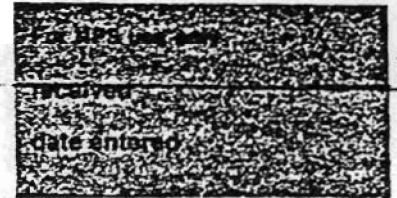
Excellent
 Good
 Fair

Deteriorated
 Ruins
 Unexposed

Unaltered
 Altered

United States Department of the Interior
National Park Service

National Register of Historic Places
Inventory—Nomination Form



Continuation sheet

40

Item number 7 & 8

Page 2

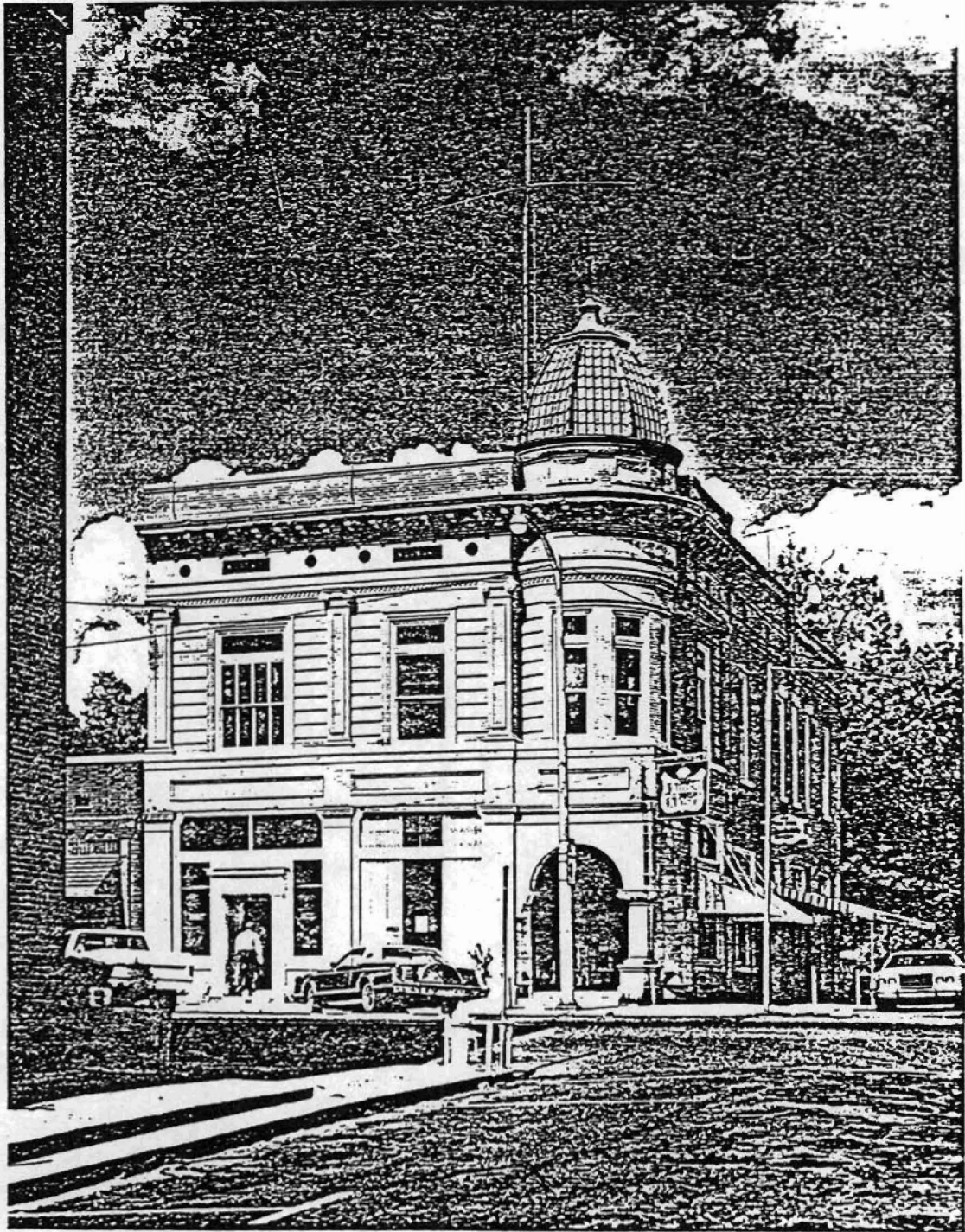
Code: DA-011 (300 Main, Fordyce, AR)

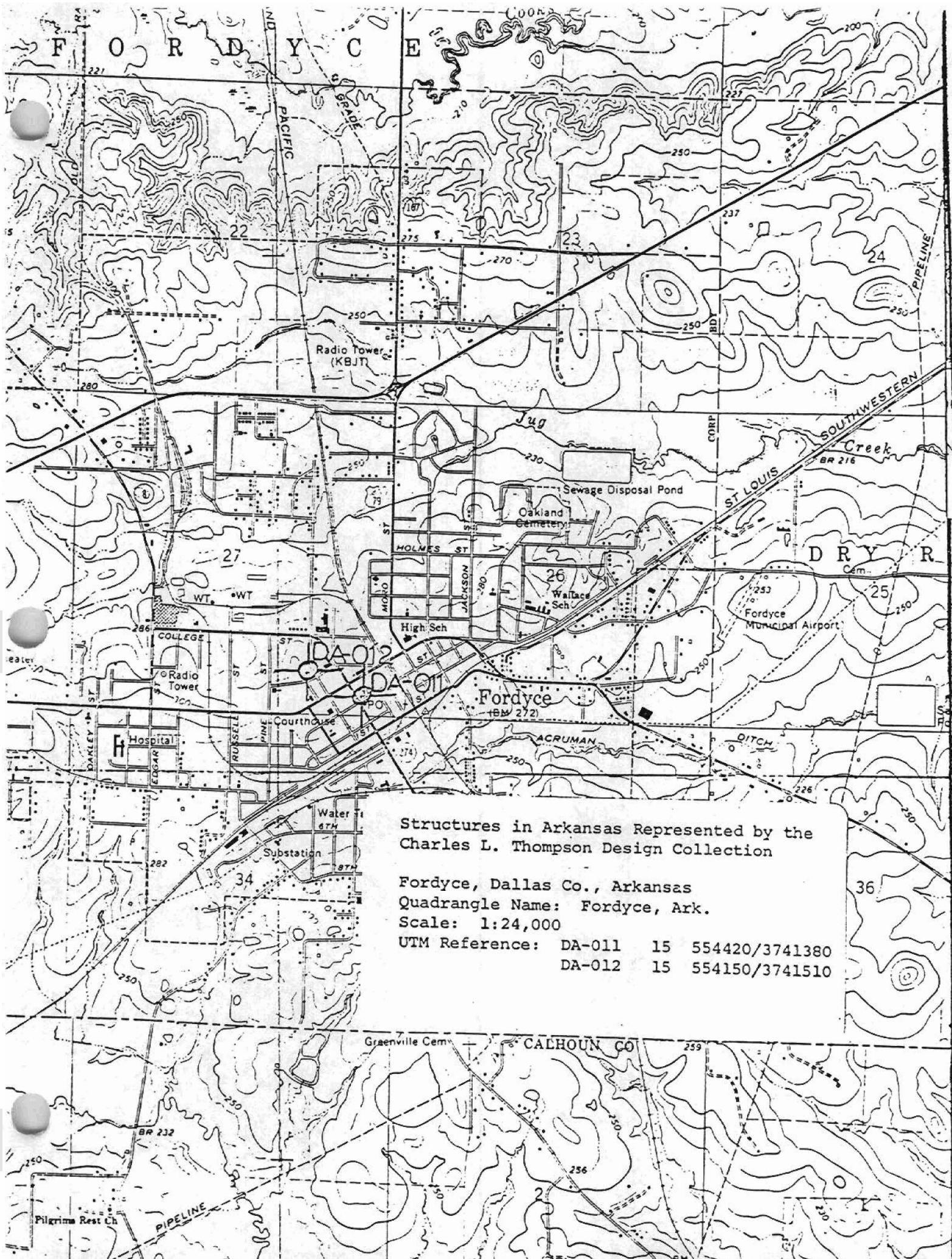
Physical Description

This two-story building designed by Charles Thompson around 1908 represents the most stylish and impressive version of several similar small-town commercial structures. A corner site with the recessed entrance of the building placed on the diagonal and flanked by two wings forms the principal arrangement for these designs. This building, located on a corner of Fordyce's Main Street, features a prominent corner tower capped by terra-cotta domical roof with finials. Its rich facade faced with gray-brown brick features brick bands resembling rustication along the second story. On the ground floor stone pilasters with simple molded capitals frame large plate glass windows. On the second story pilasters with Ionic capitals align with the plainer pilasters below. Alternating circular and rectangular decorative metal vents pierce the attic level. A stone cornice with modillions adds to the decorative flair. Above this rises the parapet with stone coping. The arched entrance porch at the corner features large masonry blocks and a free-standing granite column with attic base on high stone plinth which supports the corner. The capital of this column is over-scaled and carved in a fanciful foliate design. The beveled glass double leaf door is crowned by an arched transom with leaded glass came. The ceramic tiles of the porch floor spell out the name of the building: "Fordyce Home Accident Insurance Company." A secondary entrance leading to offices upstairs is located at the end of the Main Street block.

Statement of Significance

The Fordyce Home Accident Insurance Company in Southern Arkansas was designed by Charles L. Thompson in 1908. This building is representative of the most elaborate version of several small-town commercial structures. As in the Bank of Waldo (CO-008) and the Bank of Carthage (DA-013), the Fordyce Home Accident Insurance Company features a recessed corner entrance. All three of these southern Arkansas commercial structures were built for a Mr. A. B. Banks, a local entrepreneur. The two-story building in Fordyce is of brick construction and features an impressive corner tower capped by a terra-cotta domical roof with finials. The building is basically Queen Anne in massing with some Romanesque details in the squat columns supporting the entrance portico, stone voussoirs, and classic pilasters.





Structures in Arkansas Represented by the
Charles L. Thompson Design Collection

Fordyce, Dallas Co., Arkansas
Quadrangle Name: Fordyce, Ark.
Scale: 1:24,000

UTM Reference: DA-011 15 554420/3741380
DA-012 15 554150/3741510