

Survey Number DA-20

Owner Reverend Nolan Brown

Property Name Mt. Carmel Methodist Church Address 203 Highland Drive

Location Jacinto

Fordyce, AR 71742

Significant Date/s c. 1900

#### ARCHITECTURAL DESCRIPTION

Mt. Carmel Methodist Church, classic and serene in its simplicity, is located in a clearing with two other small frame churches located nearby. The entire grouping is ringed by pine forests. This traditional rectangular structure with gable roof is sheathed with novelty siding and is elevated on wooden piers. A hint of Greek Revival style influence is evident in the shallow pitch of the roof and simple frieze, cornice prominent gable returns and cornerboards. The north gable end contains the main entry composed of double doors with four panels each are surmounted by a two-light transom and a simple cornice. Above the entry is a small square window with simple surround. The outstanding architectural feature of this church, setting it off from its plainer neighbors, is the Gothic Revival effect created through the use of the simple, but picturesque pointed arch windows. Augmenting this Gothic Revival effect are the slightly projecting window cornices which resemble small triangular pediments. These cornices enliven the otherwise flat, planar surfaces of the side elevations. The east facade contains four symmetrically arranged windows. The west facade also has four windows and an additional single door entry similar to the main entry in the north gable end. The interior arrangement consists simply of the rectangular auditorium and the small Sunday School room in the southeast corner. Tongue-and-groove panelling and a simple wainscot line the interior walls. The rather plain panelled pulpit and the simple slat-back wooden pews appear to be original.

#### STATEMENT OF SIGNIFICANCE

Mt. Carmel Methodist Church with its simple rectangular plan and single entrance in the gable end is a traditional building type which was prevalent among Dallas County's religious architecture. Mt. Carmel is a plain, functional church which quite adequately served the needs of its Methodist congregation. Its builder felt a need, however, to embellish its simple lines by adding distinctive Gothic influenced window detailing, thereby setting it apart from its counterparts in the county. Mt. Carmel Methodist Church is truly a finely crafted example of a rural turn of the century religious structure.

Acreage: less than 1

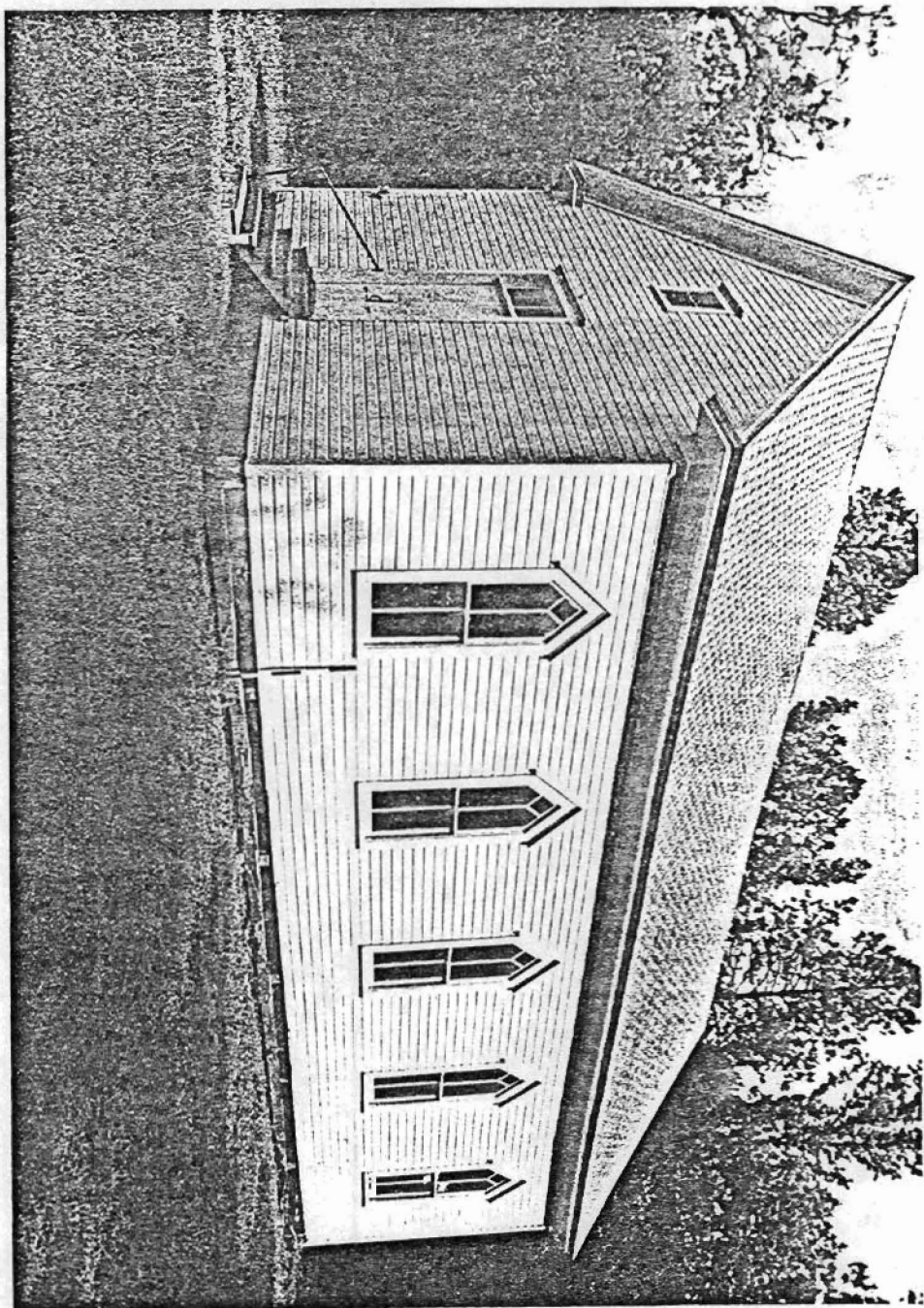
Quadrangle Name: Princeton West

Quadrangle Scale: 1:24000

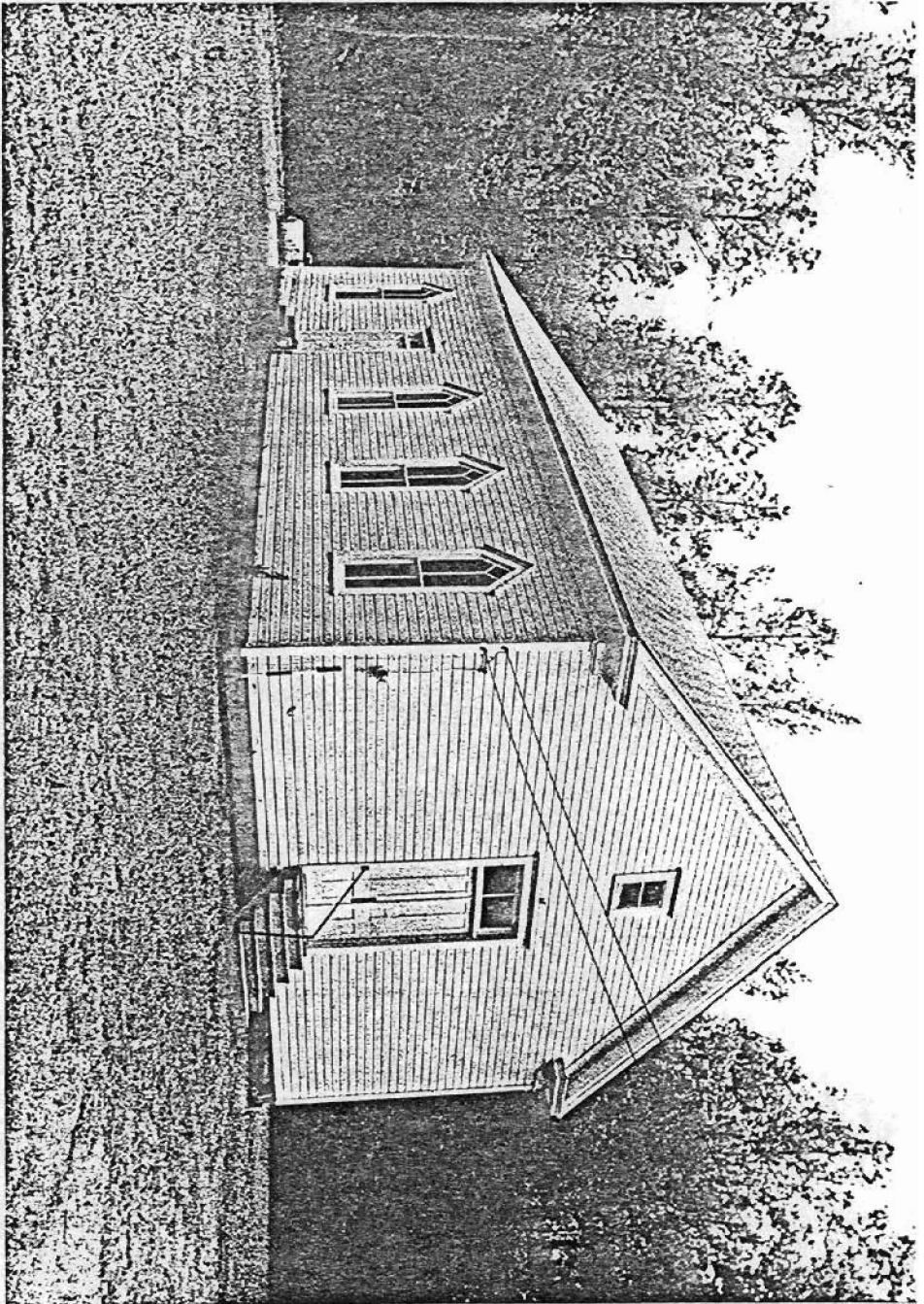
UTM Reference: 15 533520/3751330

Verbal Boundary Description:

The nominated property, located within the NE $\frac{1}{4}$  of section 33, T9S R15W, is bounded by lines running parallel to and 100' from the north, south, east, and west facades of the church.



DA-20  
Mount Carmel Methodist Church  
Sarah Brown, photographer  
May 28, 1982  
Negative on file at the AHPP  
View from the Northeast



DA-20  
Mount Carmel Methodist Church  
Sarah Brown, photographer  
May 28, 1982  
Negative on file at the AHPP  
View from the Northwest