

Survey Number DA-4

Owner Ben C. Matthews

Property Name Butler-Matthews Homestead

Address Route 2, Box 32

Location Tulip

Carthage, AR 71725

Significant Date/s c. 1853 - c. 1932

#### ARCHITECTURAL DESCRIPTION

The Butler-Matthews Homestead is located approximately one-half mile southwest of the present center of Tulip. The site was occupied as early as 1853 by Alexander Butler. The Butler House was destroyed by fire and replaced in 1922 by an I-house constructed by the new property owner, Ben Matthews. This Matthews House now serves as the center of a sixteen structure complex dating from the 1850's to the 1930's.

The Matthews House (#1 on the attached map) is a two-story gable roofed structure with a one-story ell attached to the south side of the rear facade. This wood frame house is sheathed with weatherboards and rests on concrete piers. The fenestration throughout the structure is simple. Both floors of the front facade contain a central entry of a single door with one pane above two horizontal wood panels. These doors are flanked on the north by a single one-over-one double-hung window and on the south by a simple one-over-one double-hung window on the second floor and by a pair of windows on the first floor. Dominating the front facade is a two-story full length shed roofed porch. It is supported on both floors by six tapering box columns. A balustrade of square balusters exists on the second floor. The top of the porch is accentuated by the evenly spaced exposed rafter feet.

Encircling the Matthews House to the north, east and south are fifteen ancillary structures (see map for reference).

- #2 Built in the late 1850's this small gable roofed dwelling has a rear shed addition. The structure is of braced frame construction, covered with weatherboards, and rests on wood blocks. A central door is flanked by a four-over-four double-hung window on each side. The east gable end contains a central four-over-four double-hung window while an exterior brick chimney is centered on the west end.
- #3 This gable roofed smokehouse was built in 1910. It is of wood frame construction, covered with board and batten siding, and rests on a brick foundation. It contains a simple entry in the south gable end.
- #4 Built about 1895, this gable roofed potato house is of wood frame construction. It is sheathed in horizontal weatherboards which have been covered with corrugated sheet metal. This gable roofed structure which has no foundation has a shed addition on the east side. The addition contains an entry on the south side

Survey Number DA-4

Property Name Butler-Matthews Homestead

Page 2

while the gable roofed section has an entry on the north side. A small brick flue protrudes through the gable roof just beyond the entry.

- #5 Built about 1900, this structure is a combination well house and milk house. It is a rectangular wood frame structure covered by a gable roof. The east half is enclosed and sheathed in weatherboards. It contains a door on the west side, a shuttered window opening on the north and south sides, and both a door and a window on the east facade. The west half is open and supported at the end by two round posts. This half covers a square well lined with concrete.
- #6 This wood frame structure, once a hen house, is now used to store farm equipment. Sheathed in vertical boards, the north facade contains a single entry while the south end is open. A shed addition of horizontal boards exists on each side.
- #7 This shed roofed privy is sheathed in vertical boards. The front (west) facade contains a standard four panel door.
- #8 This cow barn consists of a central drive through flanked on each side by a crib under a gable roof. A shed roofed addition exists on each side. The entire structure is covered with vertical boards. The west end has an entry of two large doors of diagonal boards. Above is a small loft opening also of diagonal boards.
- #9 Constructed of wood frame, this blacksmith shop is sheathed in board and batten siding and covered by a gable roof. The gable ends, however, are filled with horizontal boards. A shed addition attached to the west side is supported by a frame wall on the west.
- #10 This square servants dwelling is of wood frame construction, clad in board and batten siding. It is capped with a gable roof sheathed with wood shingles. The north end has an open entry while the west side has a small window opening.
- #11 Built in the late 1850's, this gable roofed structure is said to be an office. Set on brick piers it is constructed of square-notched logs and clad in weatherboards. Corner boards and simple box cornices frame the facades. The west facade contains a single door entry. The north gable end and the east facade each contain one six-over-six double-hung window. A large exterior brick chimney (in ruin) exists on the south gable end.
- #12 This well was constructed before 1900. Enclosing the well opening is a wood frame well guard sheathed in horizontal boards. Atop

Survey Number DA-4Property Name Butler-Matthews Homestead

page 3

this guard is a simple wooden frame which supports the pulleys, ropes, and bucket used to draw water.

- #13 Clad in vertical boards this frame garage is covered by gable roof. The gable ends are filled with horizontal weatherboard. This north facade consists of two large doors.
- #14 Built of round logs this barn is composed of a central drive through flanked by a crib on each side, under a gable roof. The roof extends over a shed addition on each side. The gable ends are filled with vertical boards.
- #15 This gable roofed wood frame structure was used to store corn or other grain. Clad in board and batten siding it rests on concrete piers capped with sheet metal to make it inaccessible to rats and mice. The east gable end has two entries below a simple loft opening. An extension shed roof has been added to the north side.
- #16 This wood frame garage is covered by a gable roof. Clad with horizontal boards it has a double door entry in the north facade.

## STATEMENT OF SIGNIFICANCE

The Butler-Matthews Homestead is a sixteen structure complex located in the community of Tulip. Although the main dwelling in this complex was destroyed by fire in 1921, the homestead is significant to the architectural and agricultural history of Dallas County. The present main dwelling, built by current owner Ben Matthews in 1922 constitutes the only post-bellum historic dwelling in Tulip. This structure is one of two houses in the county representing a form, the I-house, which was once common. Equally important is the array of ancillary structures reflecting the plantation system and the evolution from this system to an early 20th century subsistence system. Of great importance in this collection of structures is the survival of two pre-Civil War structures, an office building and an overseer's dwelling. These two buildings built by Alexander Butler constitute the only structures existing from Tulip's most prominent period, 1840-1860. The Butler-Matthews Homestead complex contains Tulip's only historic dwellings and outbuildings illustrating the evolution of the area's agricultural/economic system.

Acreage: 9 - to include the main house and all ancillary structures and to protect the rural environment of the homestead.

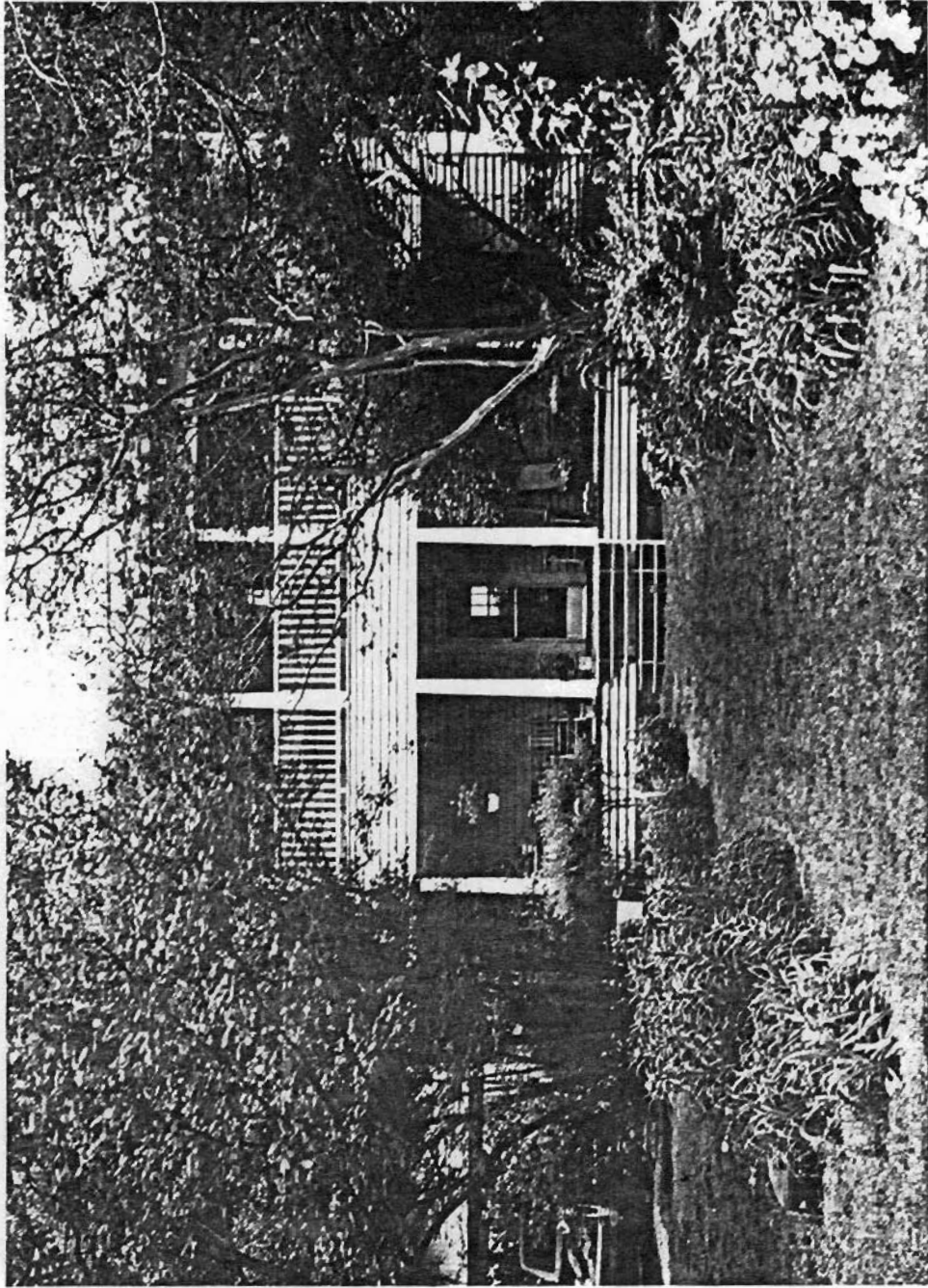
Quadrangle Name: Tulip

Quadrangle Scale: 1:24000

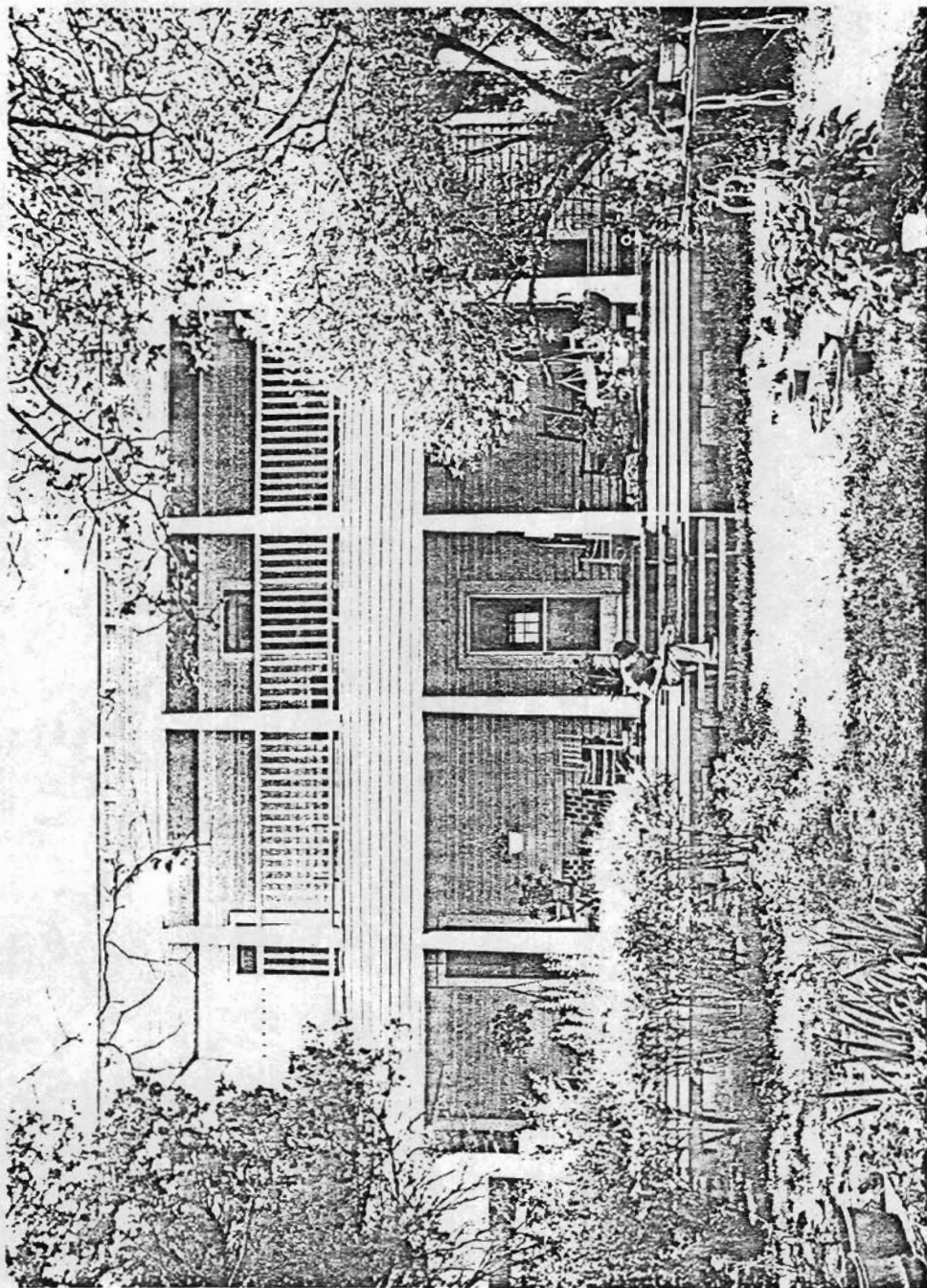
UTM Reference: A 15 531820/3770380  
 B 15 531820/3770180  
 C 15 531620/3770180  
 D 15 531620/3770380

## Verbal Boundary Description:

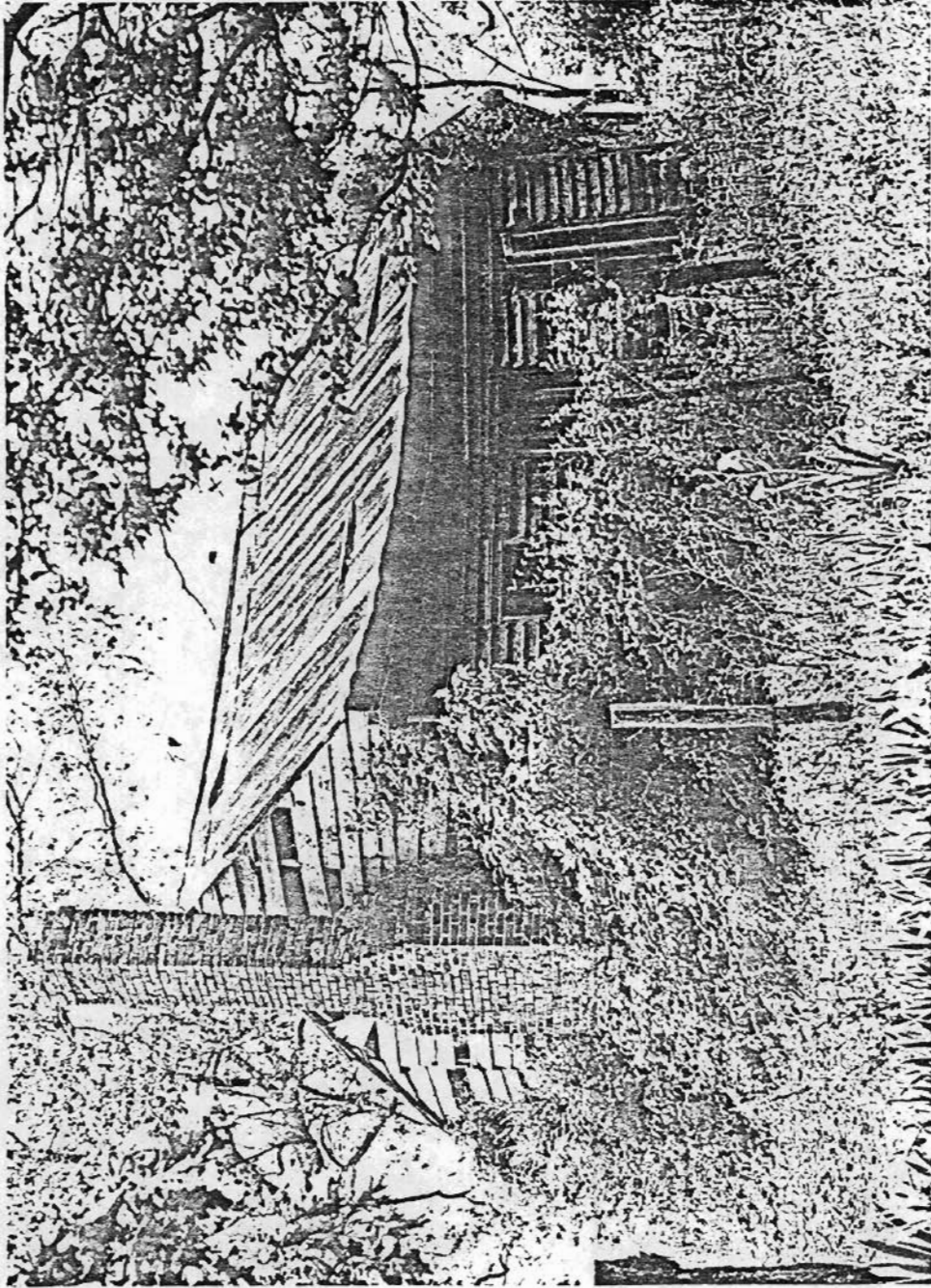
The nominated property, located within the E $\frac{1}{2}$  of the NW $\frac{1}{4}$  of section 32, T7S R15W, is a square, containing 9 acres, located on the main house.



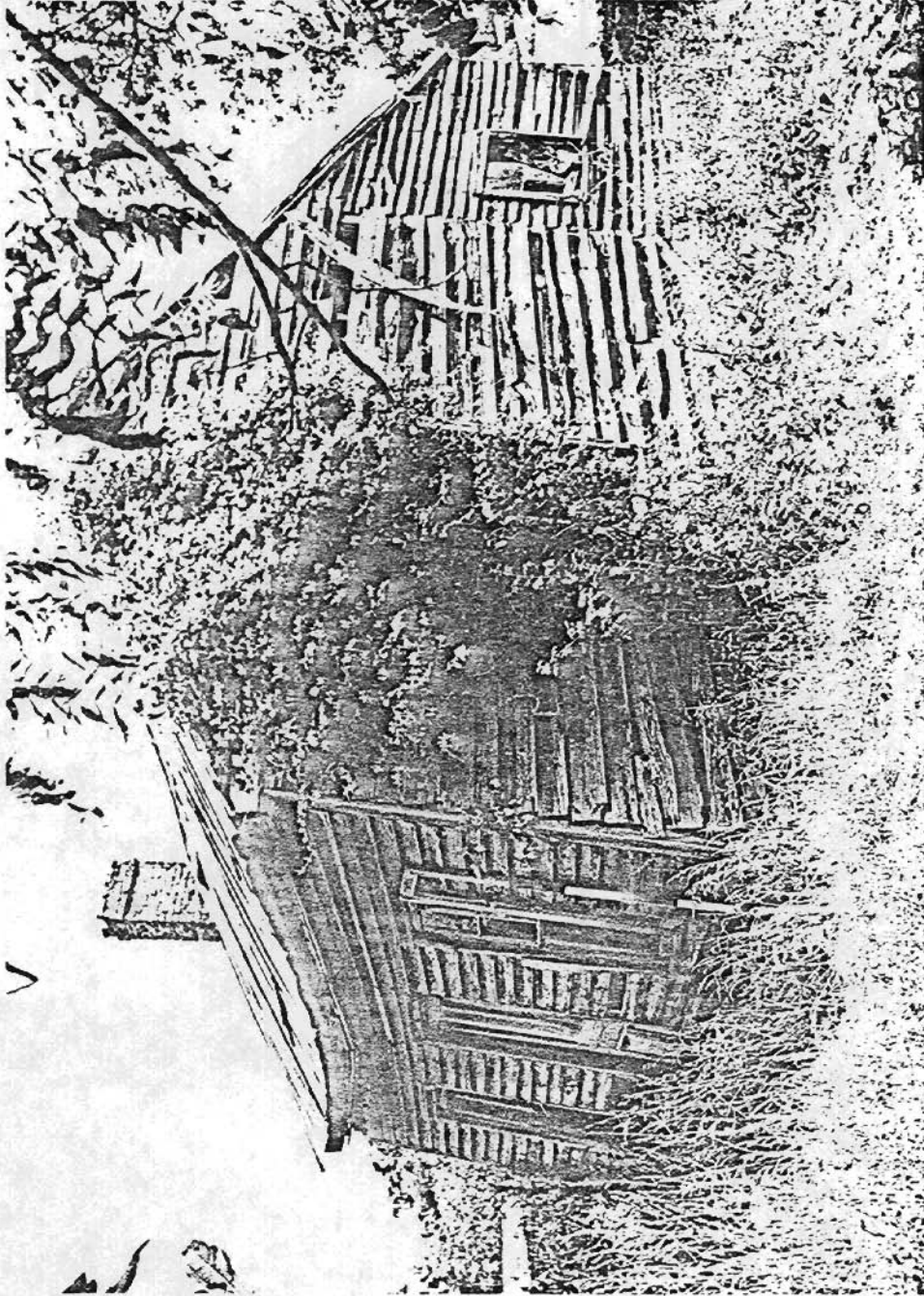
DA-4  
Butler-Matthews Homestead  
Sarah Brown, photographer  
May 7, 1983  
Negative on file at the AHPP  
View from the West



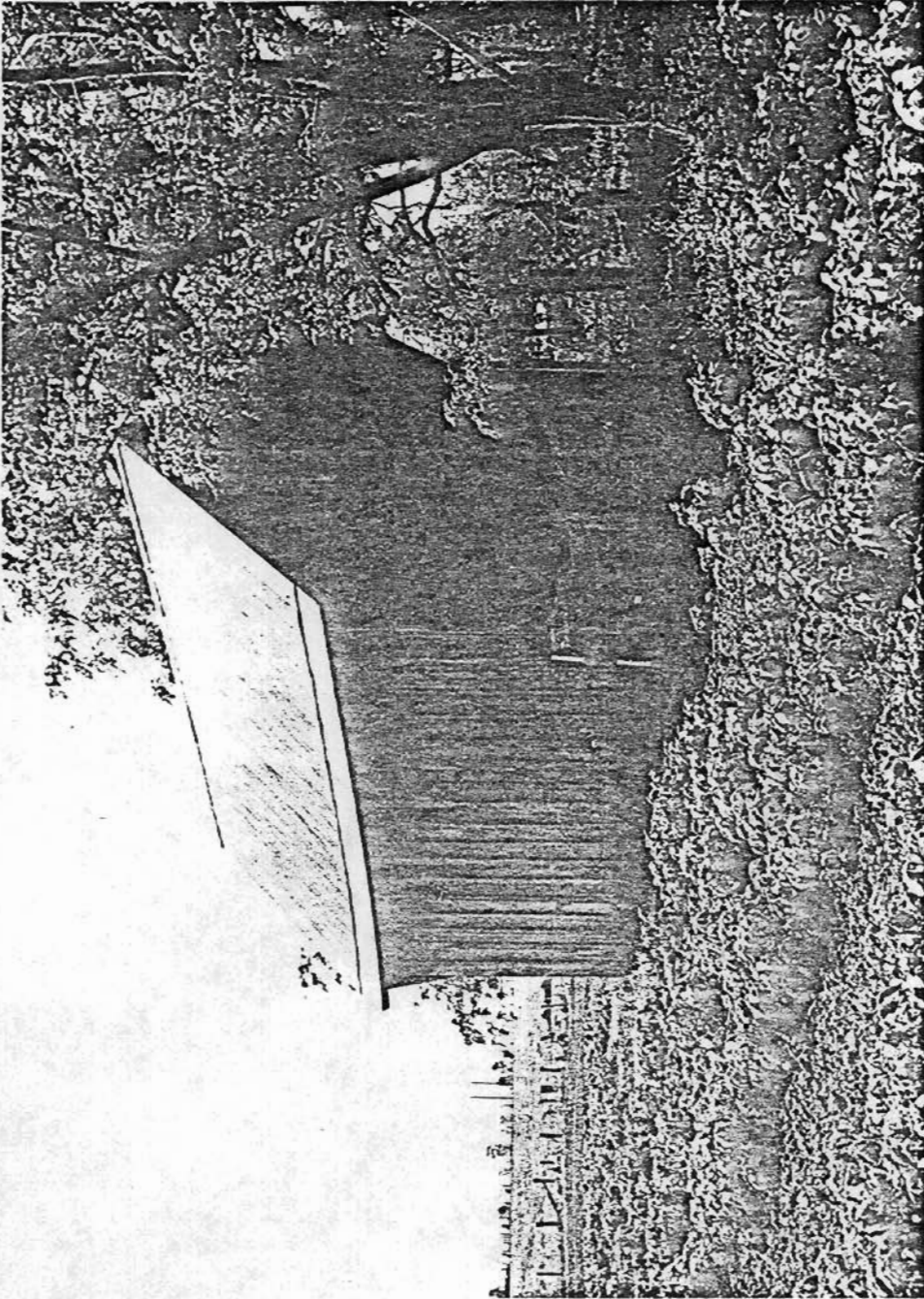
DA-4  
Butler-Matthews Homestead  
Sarah Brown, photographer  
May 10, 1982  
Negative filed at the AHPP  
View from the west



DA-4  
Butler-Matthews Homestead  
structure #2, dwelling  
Sarah Brown, photographer  
May 7, 1983  
Negative on file at the AHPP  
View from the Southwest

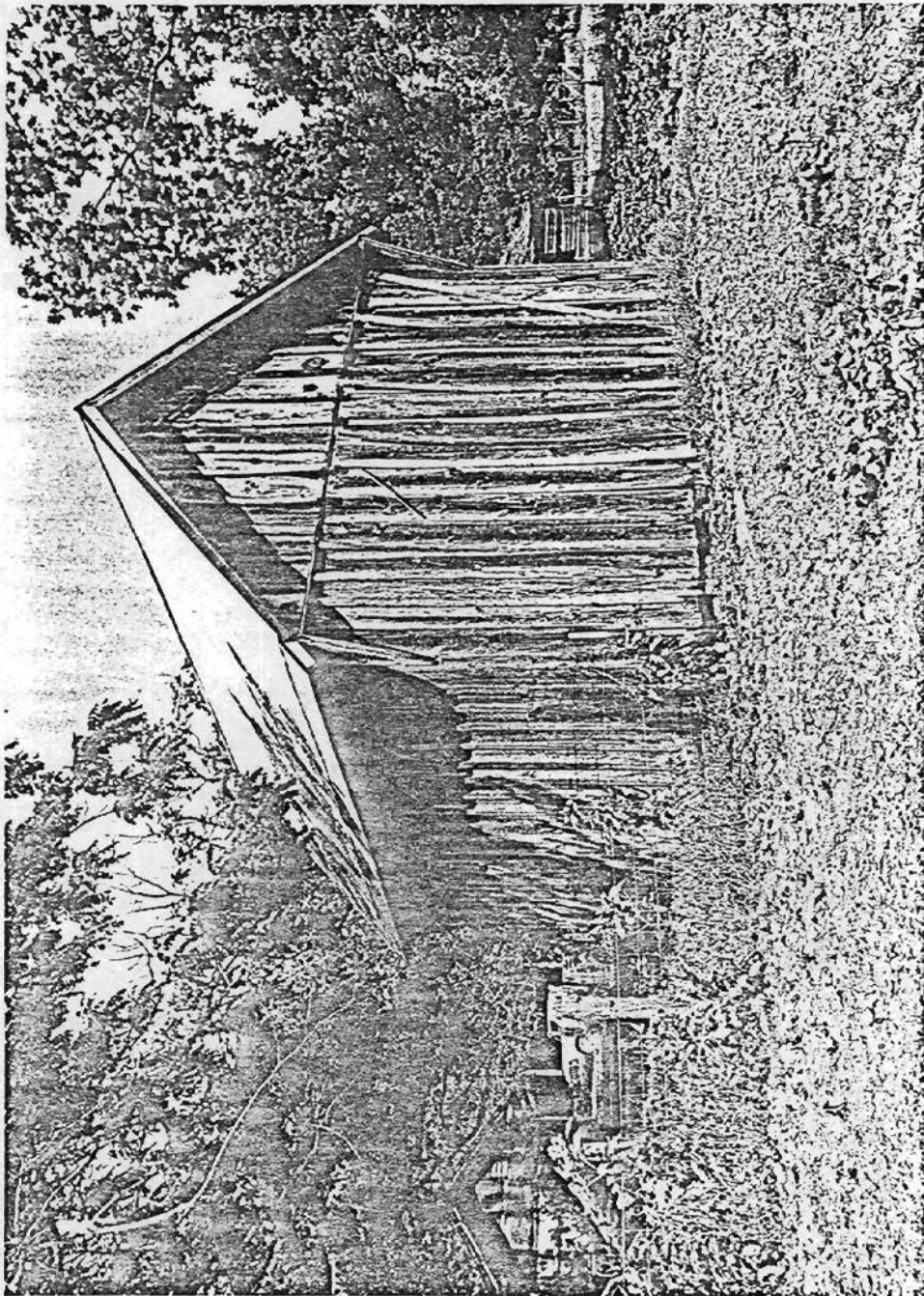


DA-4  
Butler-Matthews Homestead,  
structure #2, dwelling  
Sarah Brown, photographer  
May 11, 1982  
Negative filed at the AHPP  
View from the southeast

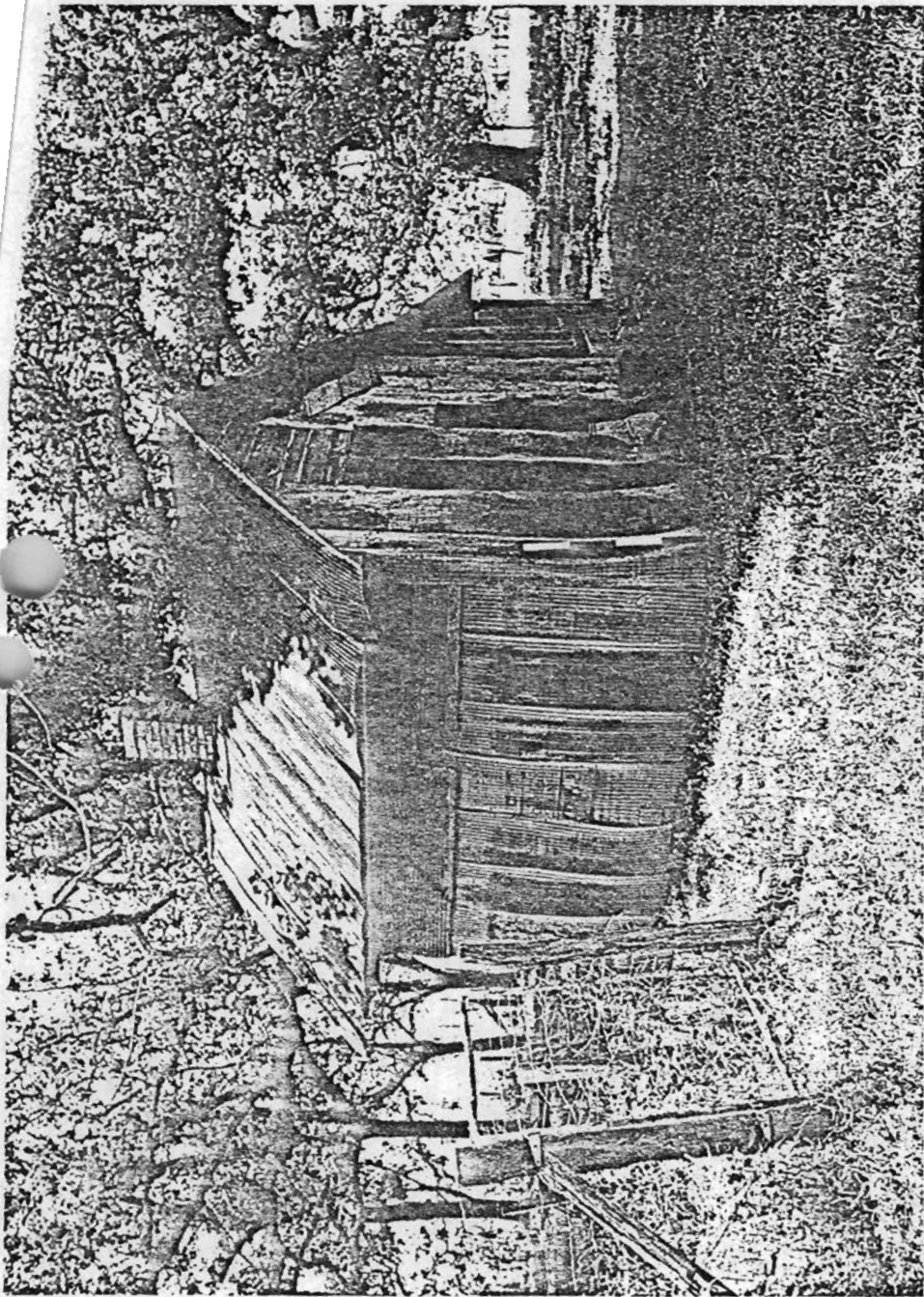


DA-4  
Butler-Matthews Homestead,  
structure #3, smokehouse  
Sarah Brown, photographer  
May 10, 1982  
Negative filed at the AHPP  
View from the southwest

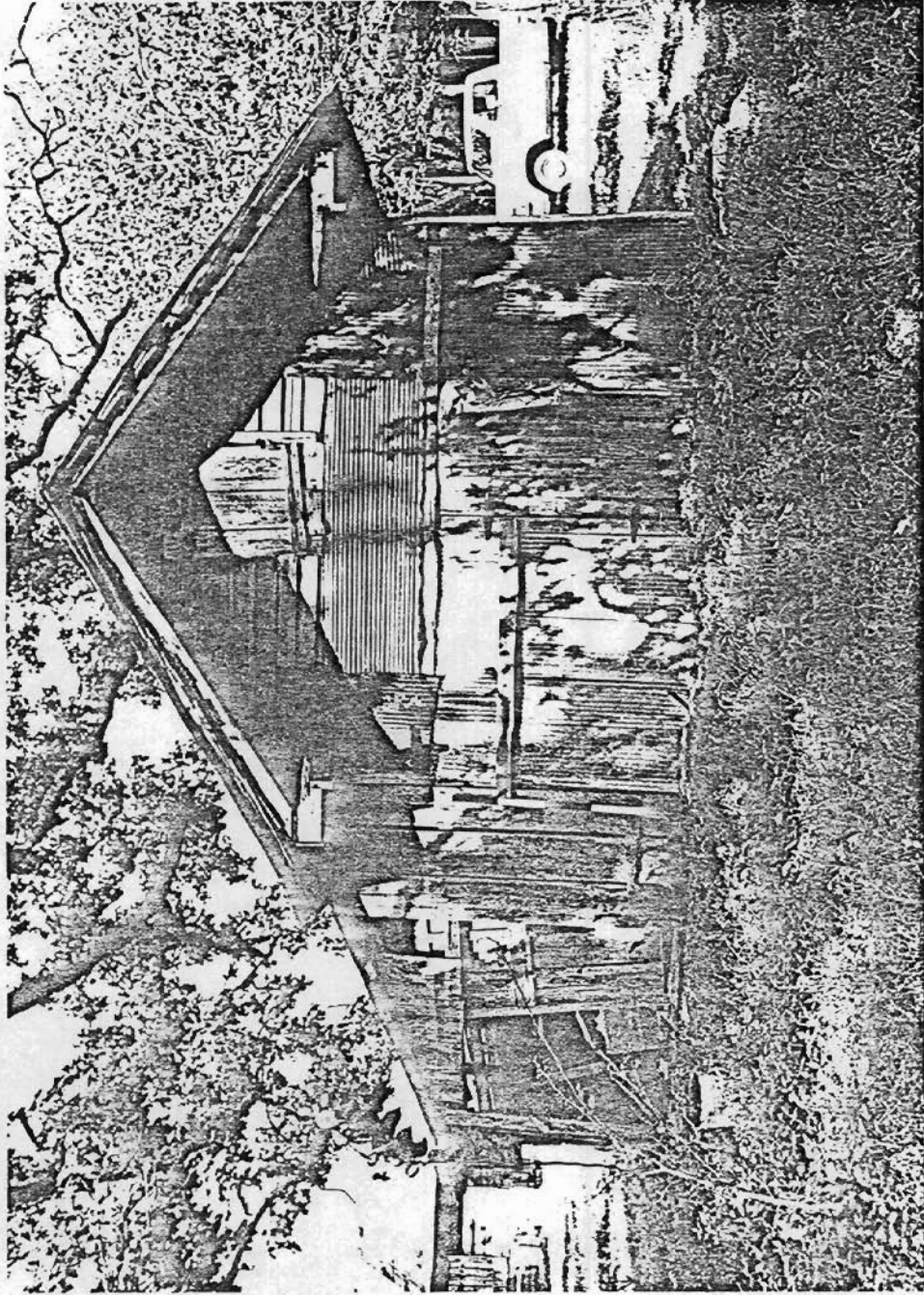




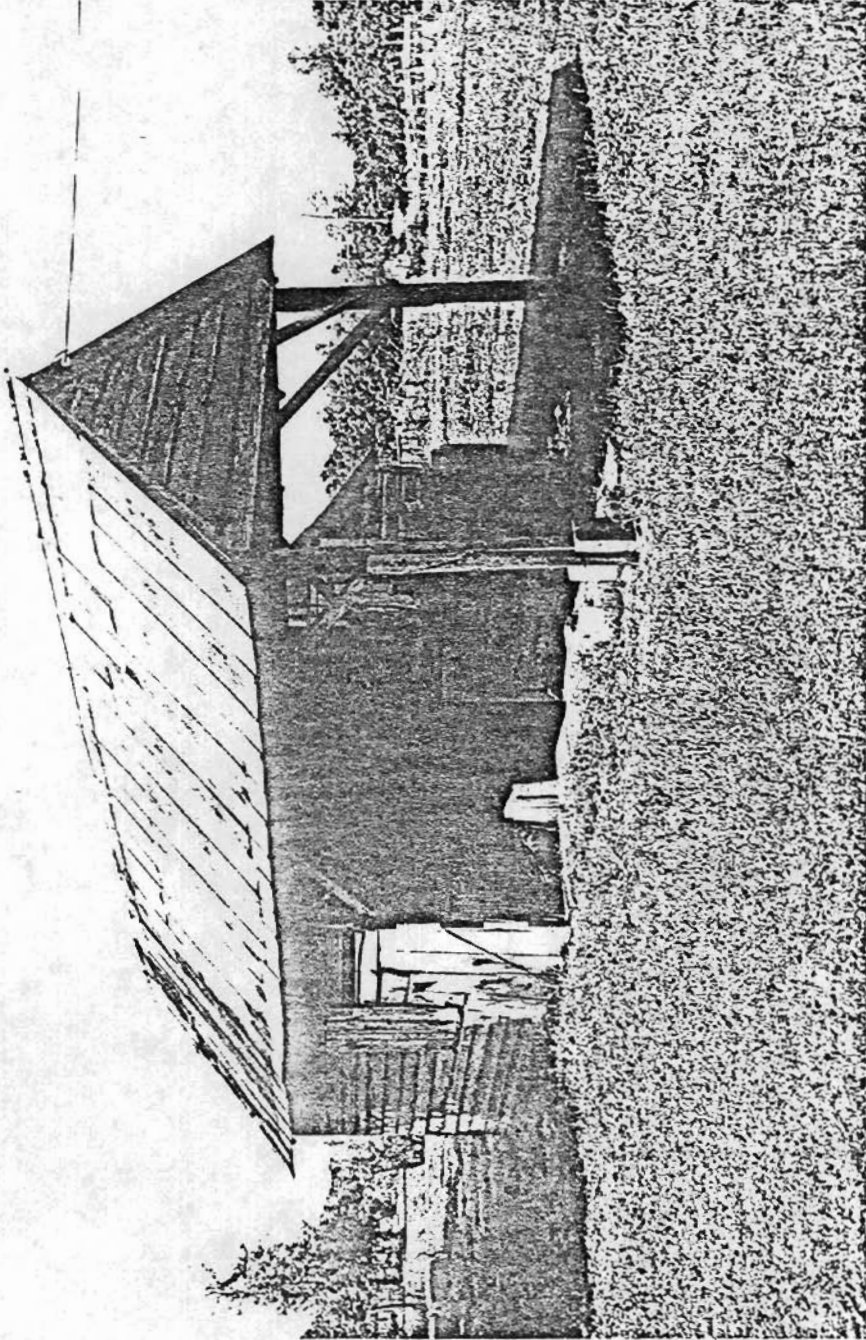
DA-4  
Butler-Matthews Homestead,  
structure #3, smokehouse  
Sarah Brown, photographer  
May 10, 1982  
Negative filed at the AHPP  
View from the Northeast



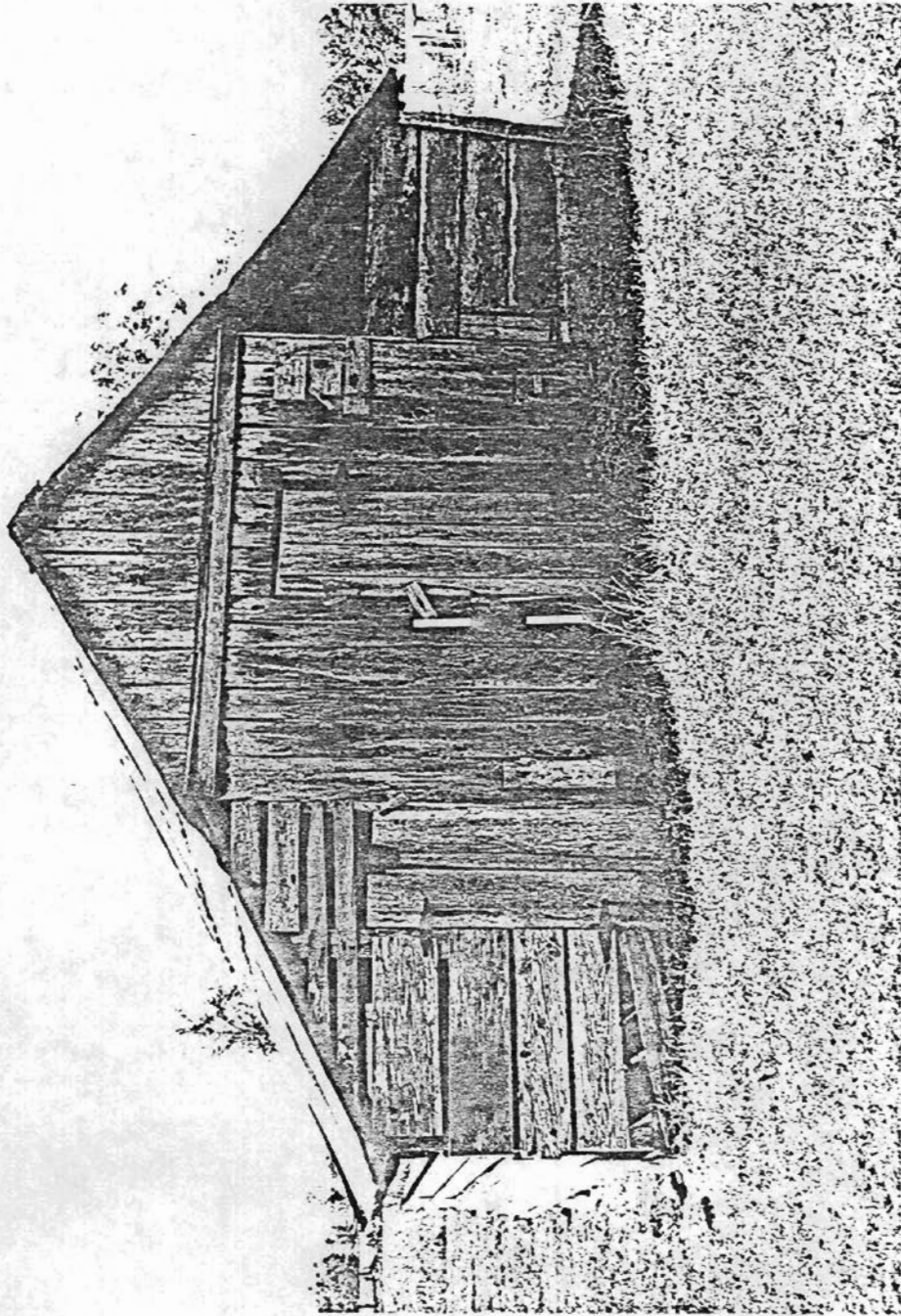
DA-4  
Butler-Matthews Homestead,  
structure #4, potato house  
Sarah Brown, photographer  
May 10, 1982  
Negative filed at the AHPP  
View from the southwest



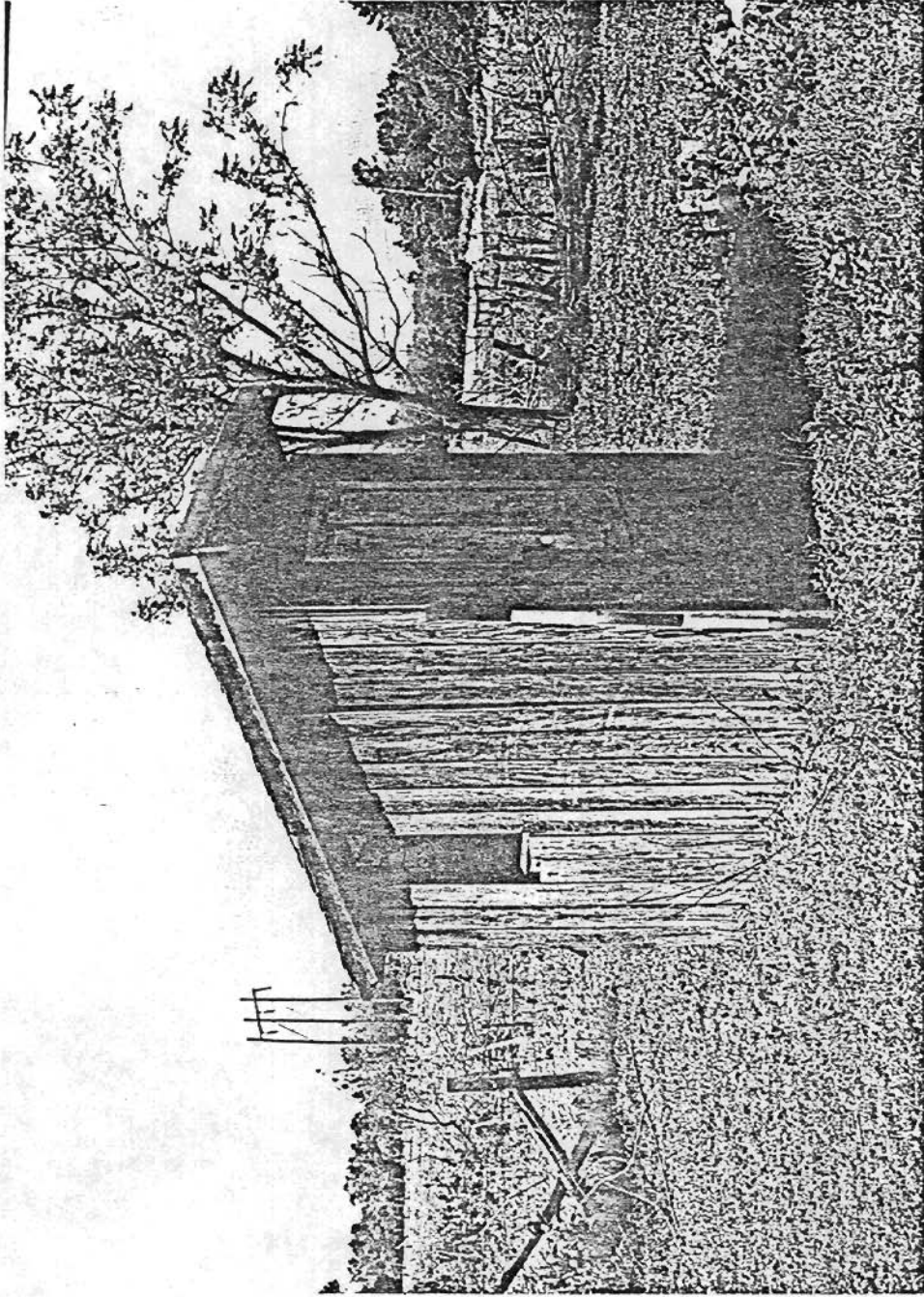
DA-4  
Butler-Matthews Homestead,  
structure #4, potato house  
Sarah Brown, photographer  
May 10, 1982  
Negative filed at the AHPP  
View from the North



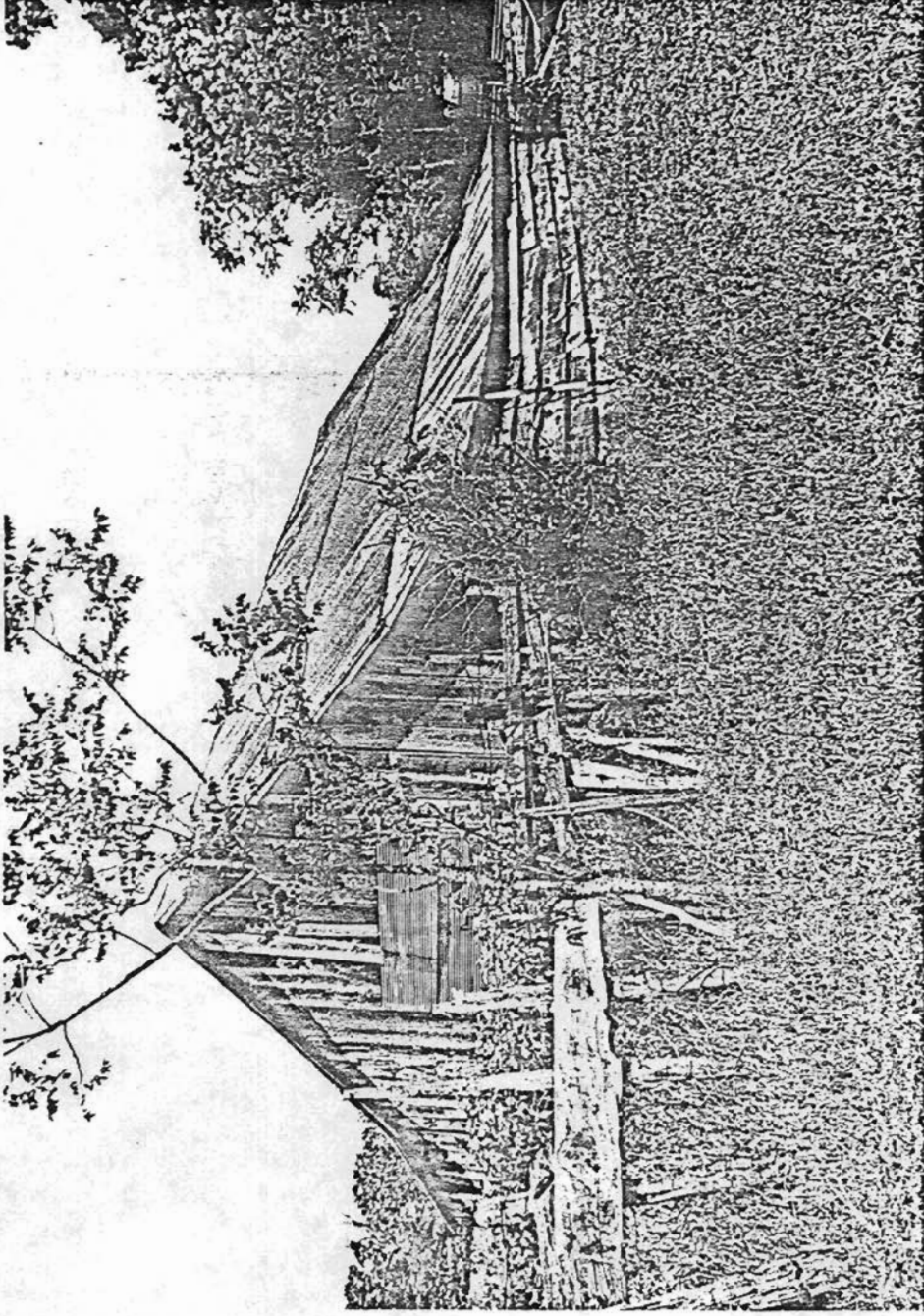
DA-4  
Butler-Matthews Homestead,  
structure #5, well and milk house  
Sarah Brown, photographer  
May 10, 1982  
Negative on file at the AHPP  
View from the northwest



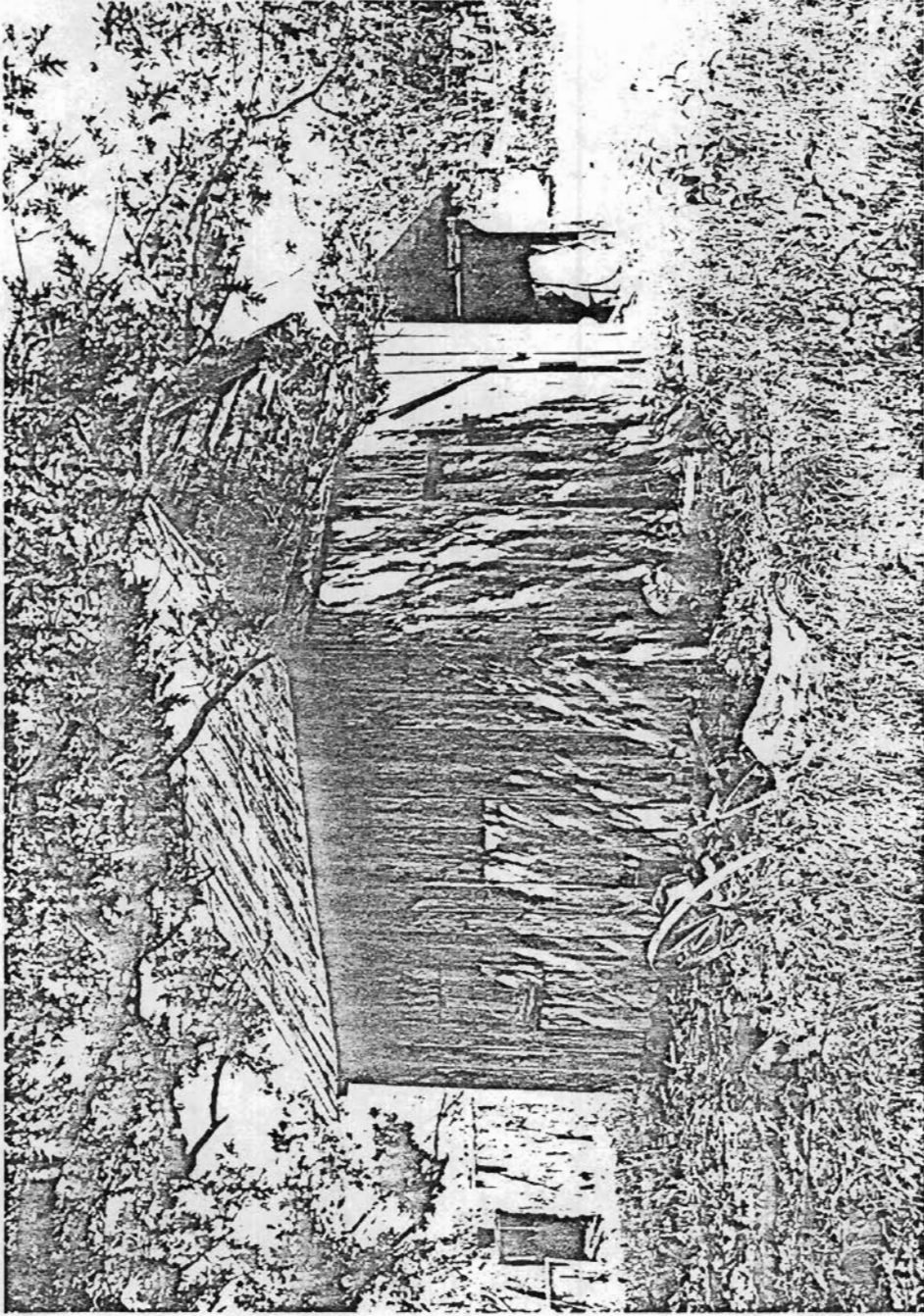
DA-4  
Butler-Matthews Homestead,  
structure #6, hen house  
Sarah Brown, photographer  
May 10, 1982  
Negative on file at the AHPP  
View from the northwest



DA-4  
Butler-Matthews Homestead,  
structure #7, privy  
Sarah Brown, photographer  
May 10, 1982  
Negative on file at the AHPP  
View from the Northwest

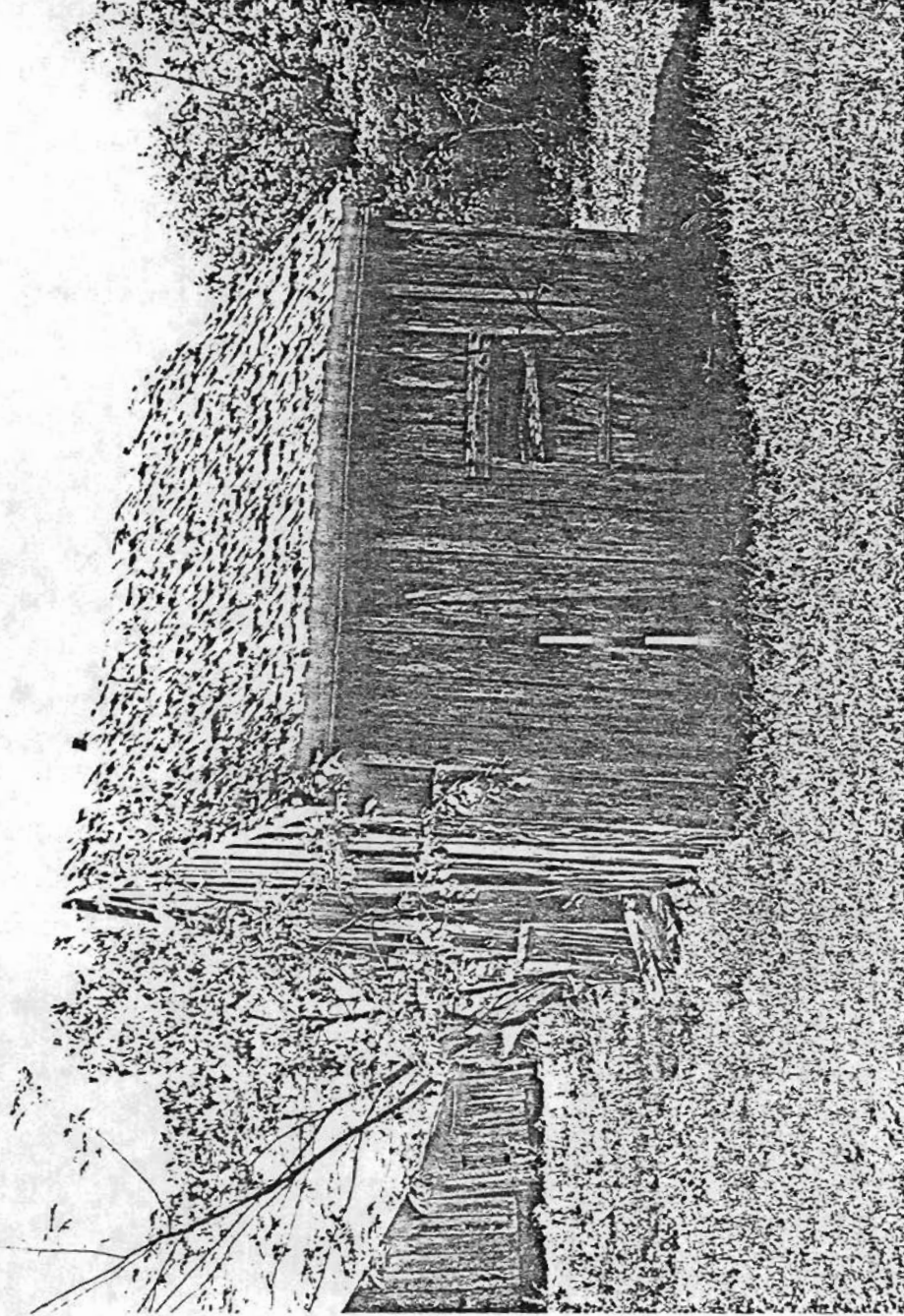


DA-4  
Butler-Matthews Homestead,  
structure #8, cow barn  
Sarah Brown, photographer  
May 10, 1982  
Negative on file at the AHPP  
View from the Northeast

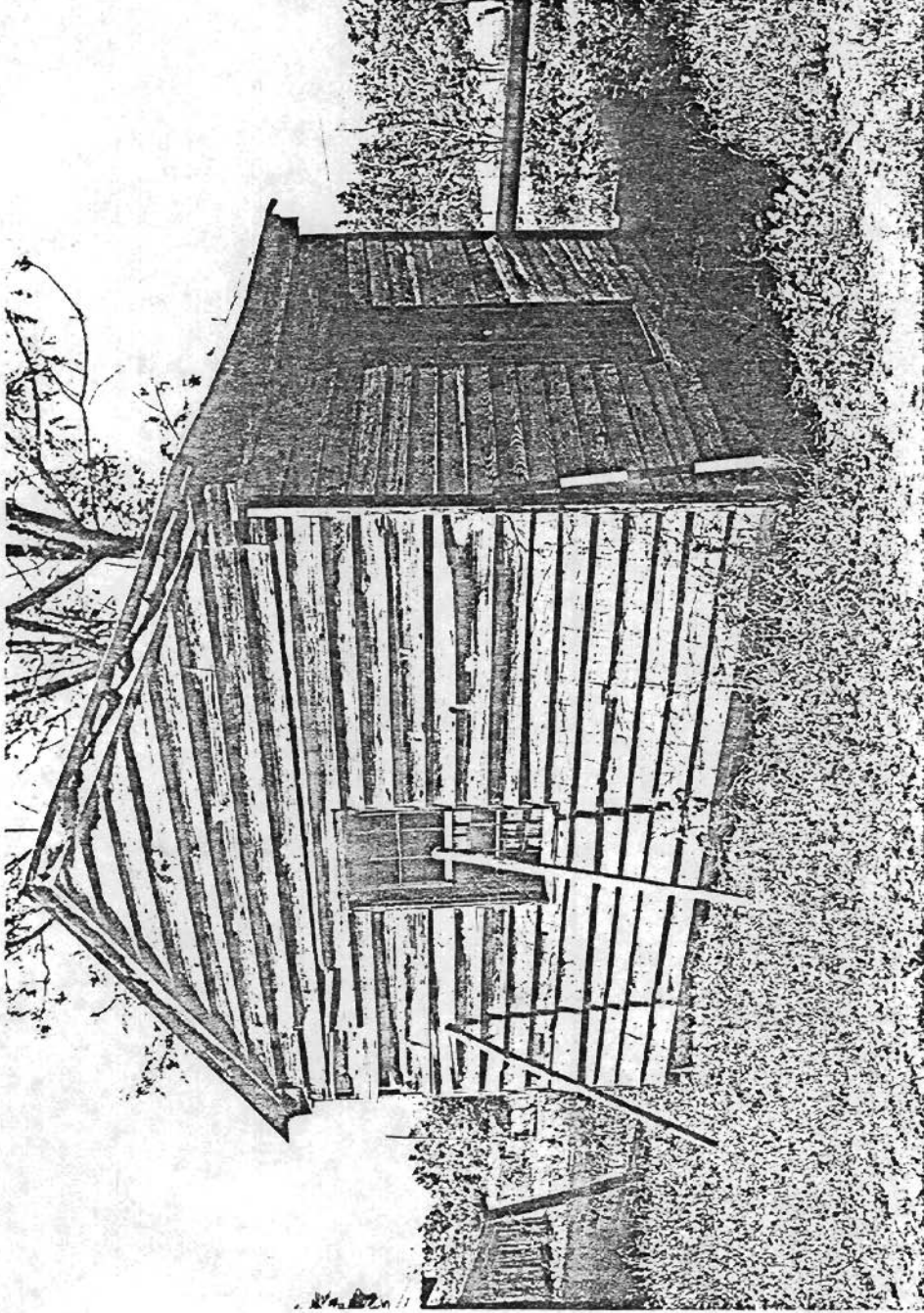


DA-4  
Butler-Matthews Homestead,  
structure #9, blacksmith shop  
Sarah Brown, photographer  
May 10, 1982  
Negative on file at the AHPP  
View from the Northeast

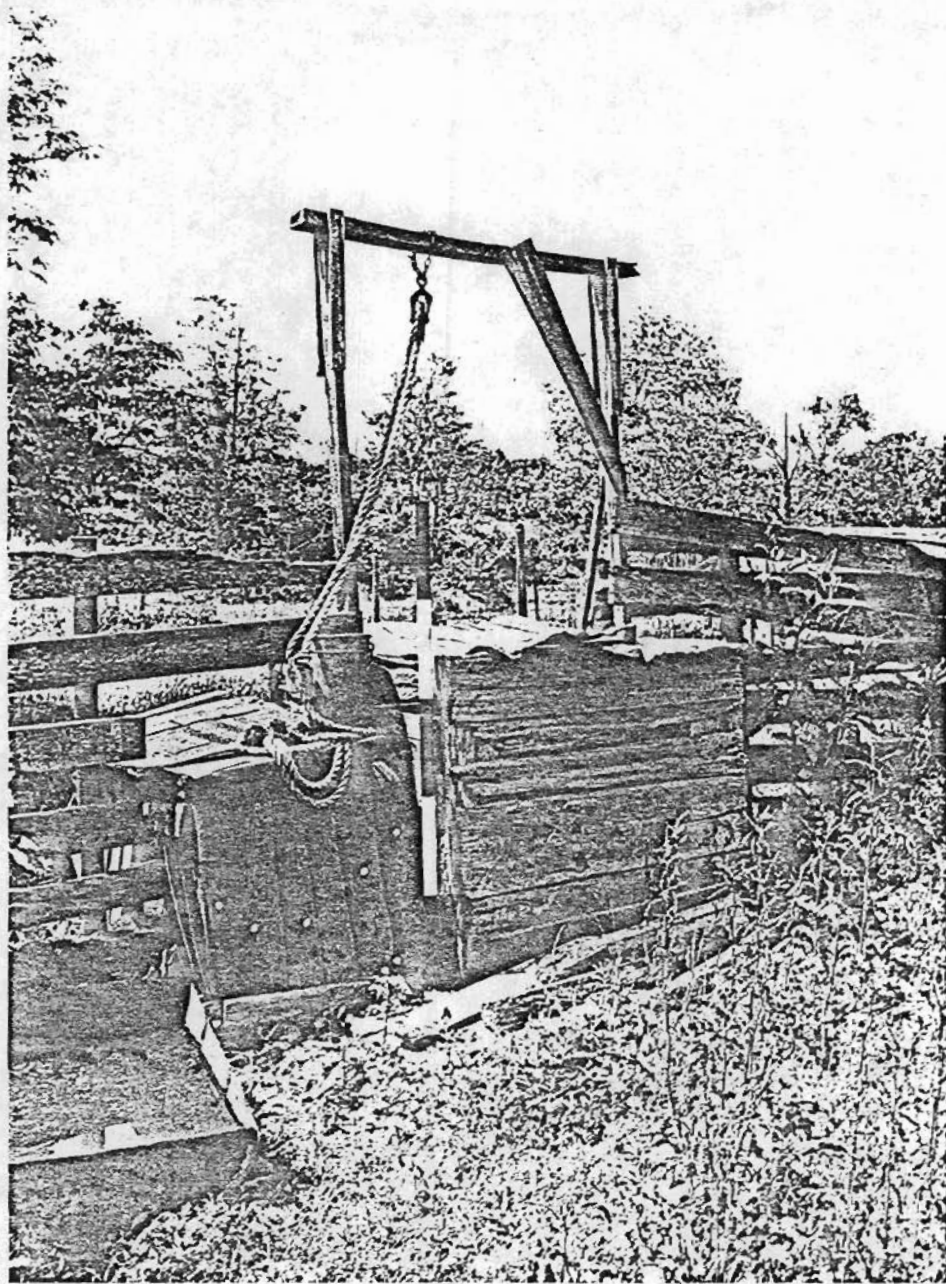




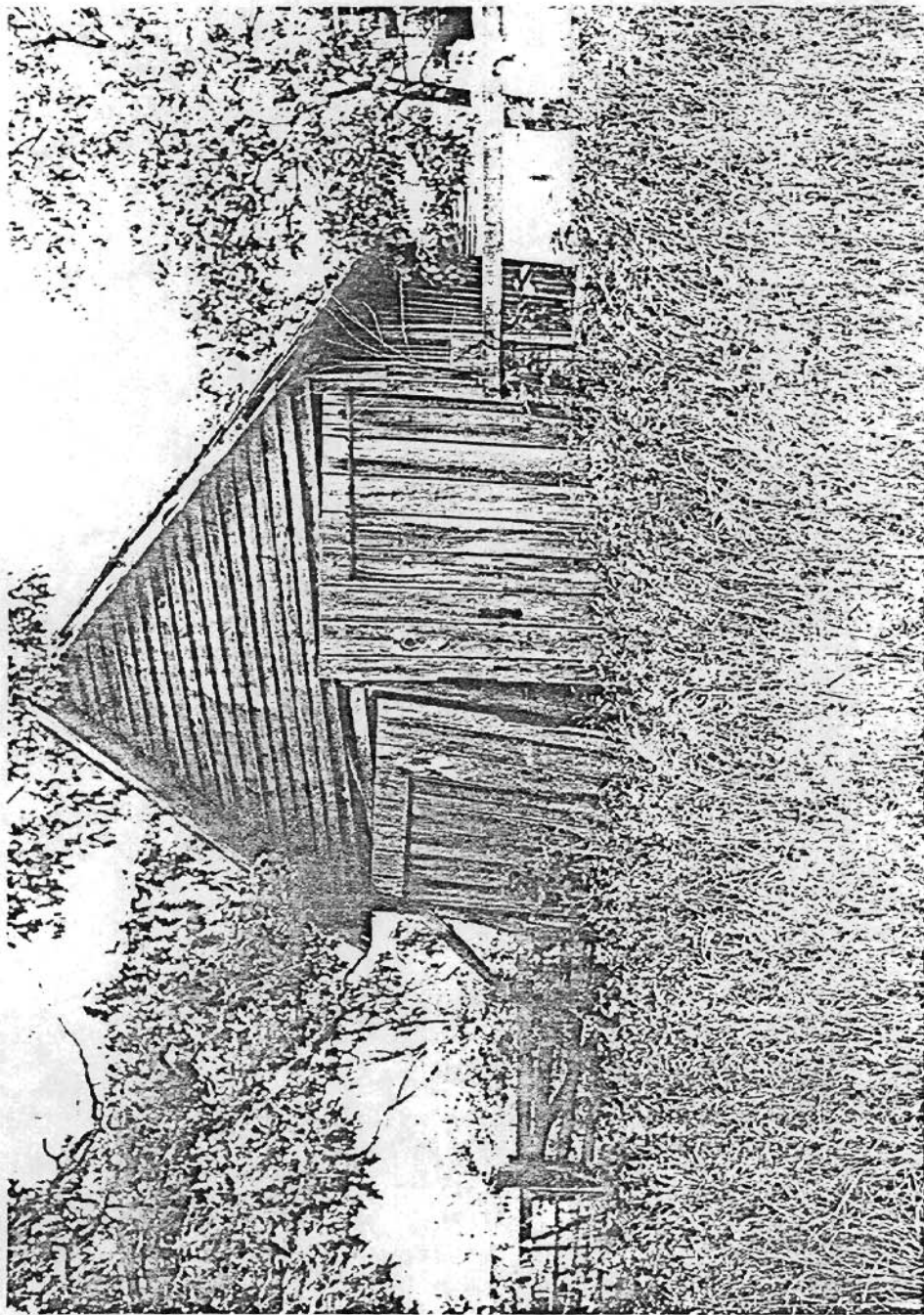
DA-4  
Butler-Matthews Homestead,  
structure #10, servant's dwelling  
Sarah Brown, photographer  
May 10, 1982  
Negative on file at the AHPP  
View from the Northwest



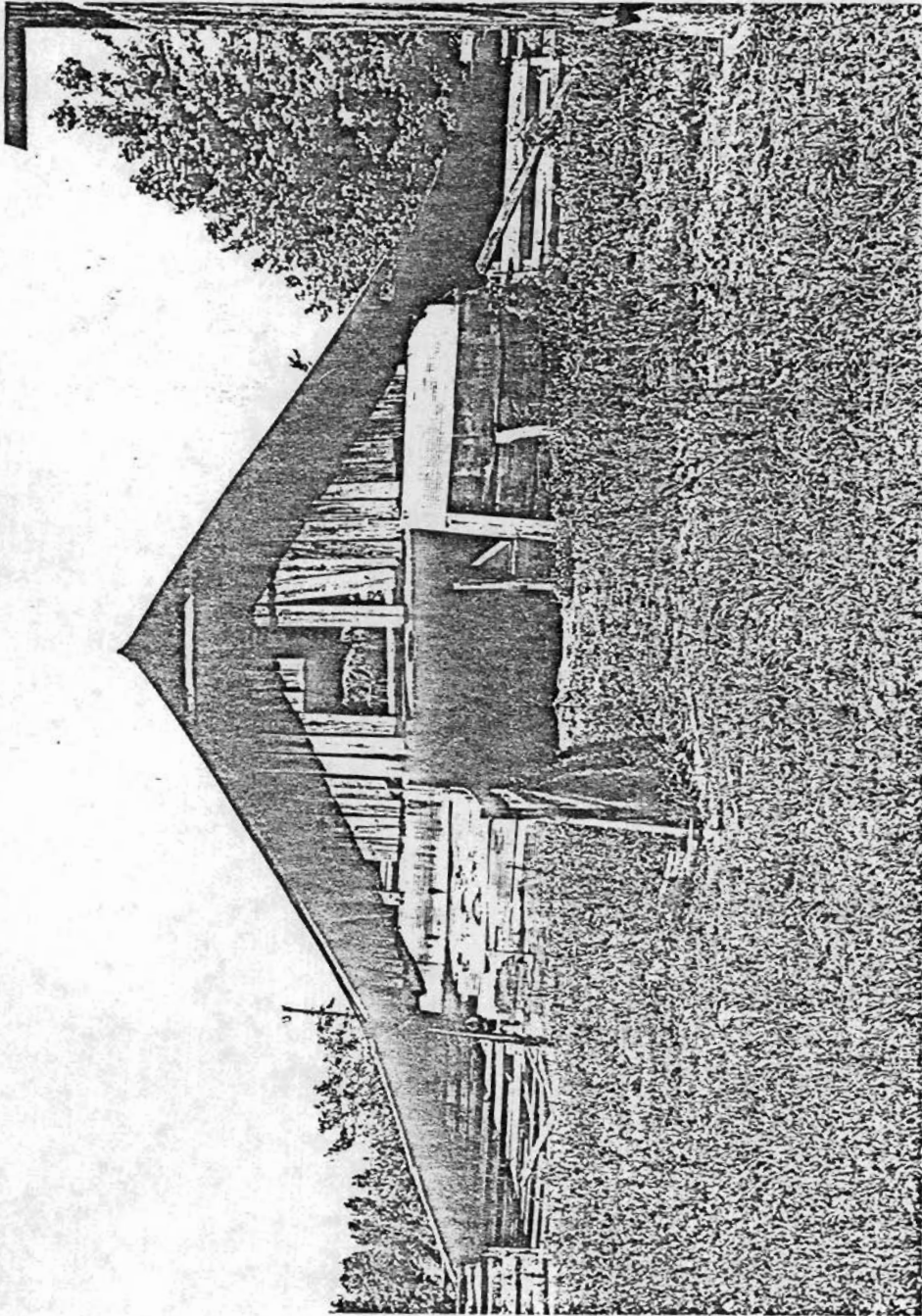
DA-4  
Butler-Matthews Homestead,  
structure #11, office  
Sarah Brown, photographer  
May 10, 1982  
Negative on file at the AHPP  
View from the Northwest



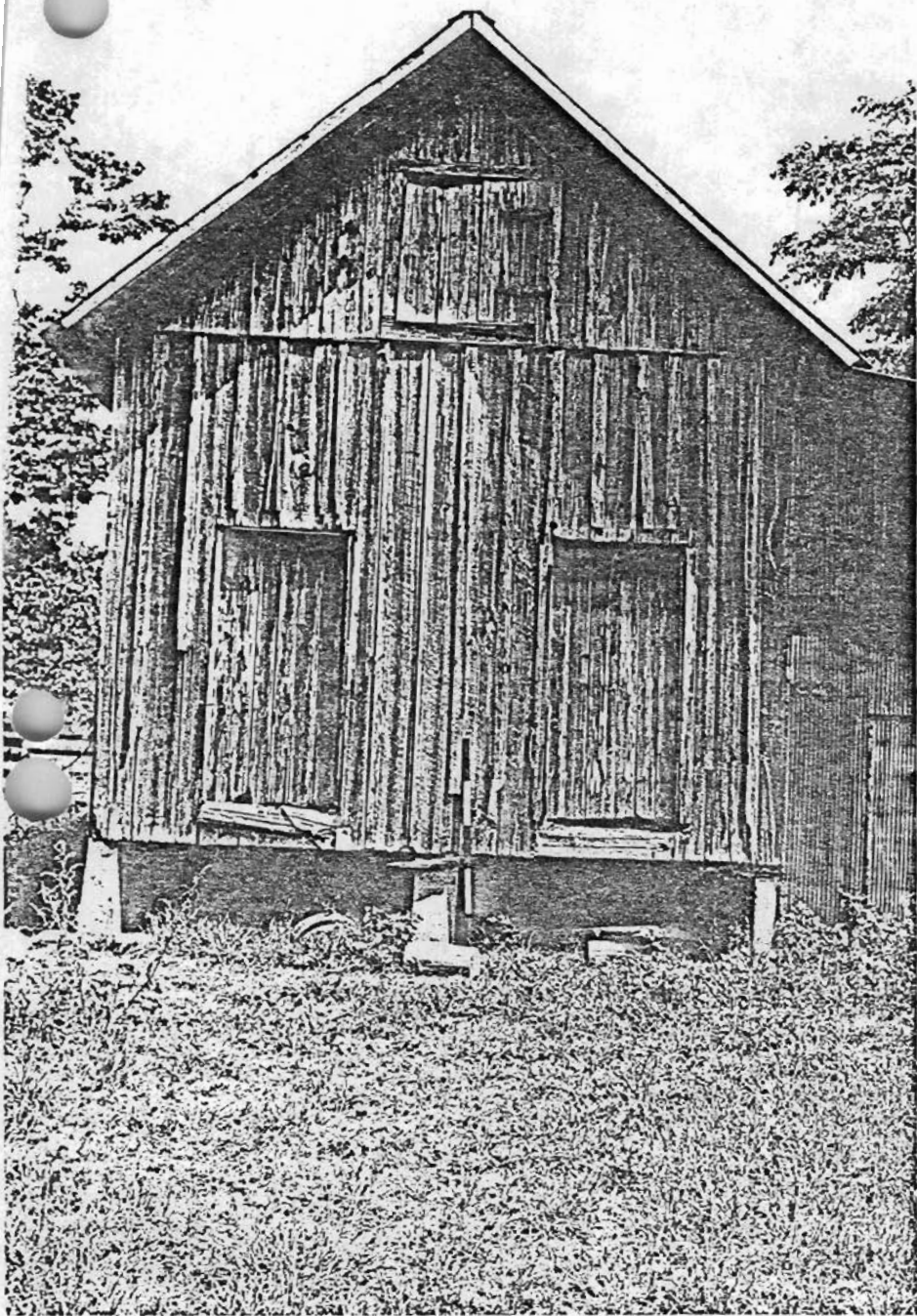
DA-4  
Butler-Matthews Homestead,  
structure #12, well  
Sarah Brown, photographer  
May 10, 1982  
Negative on file at the AHPP  
View from the Northwest



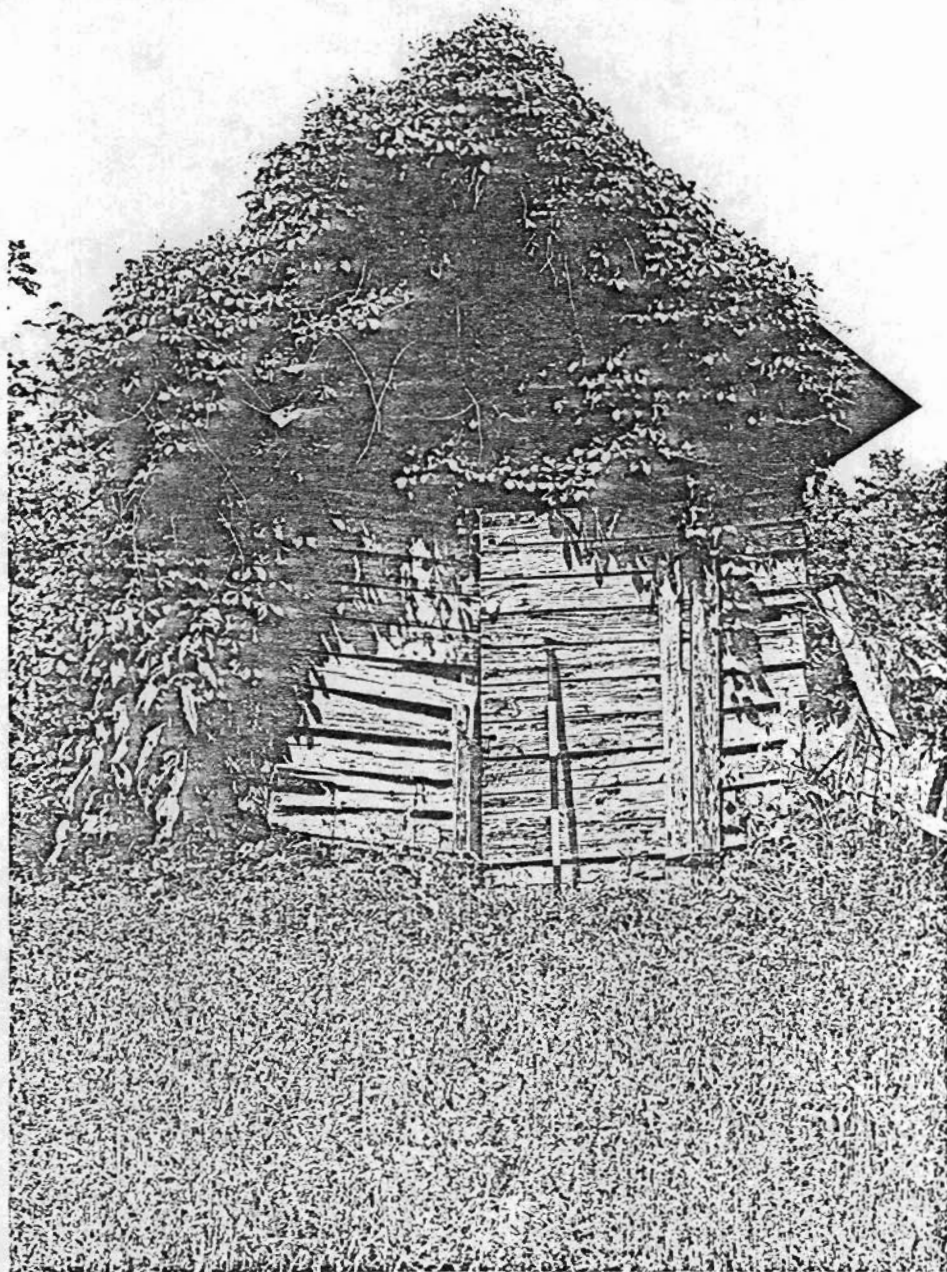
DA-4  
Butler-Matthews Homestead,  
structure #13, garage  
Sarah Brown, photographer  
May 10, 1982  
Negative on file at the AHPP  
View from the Northwest



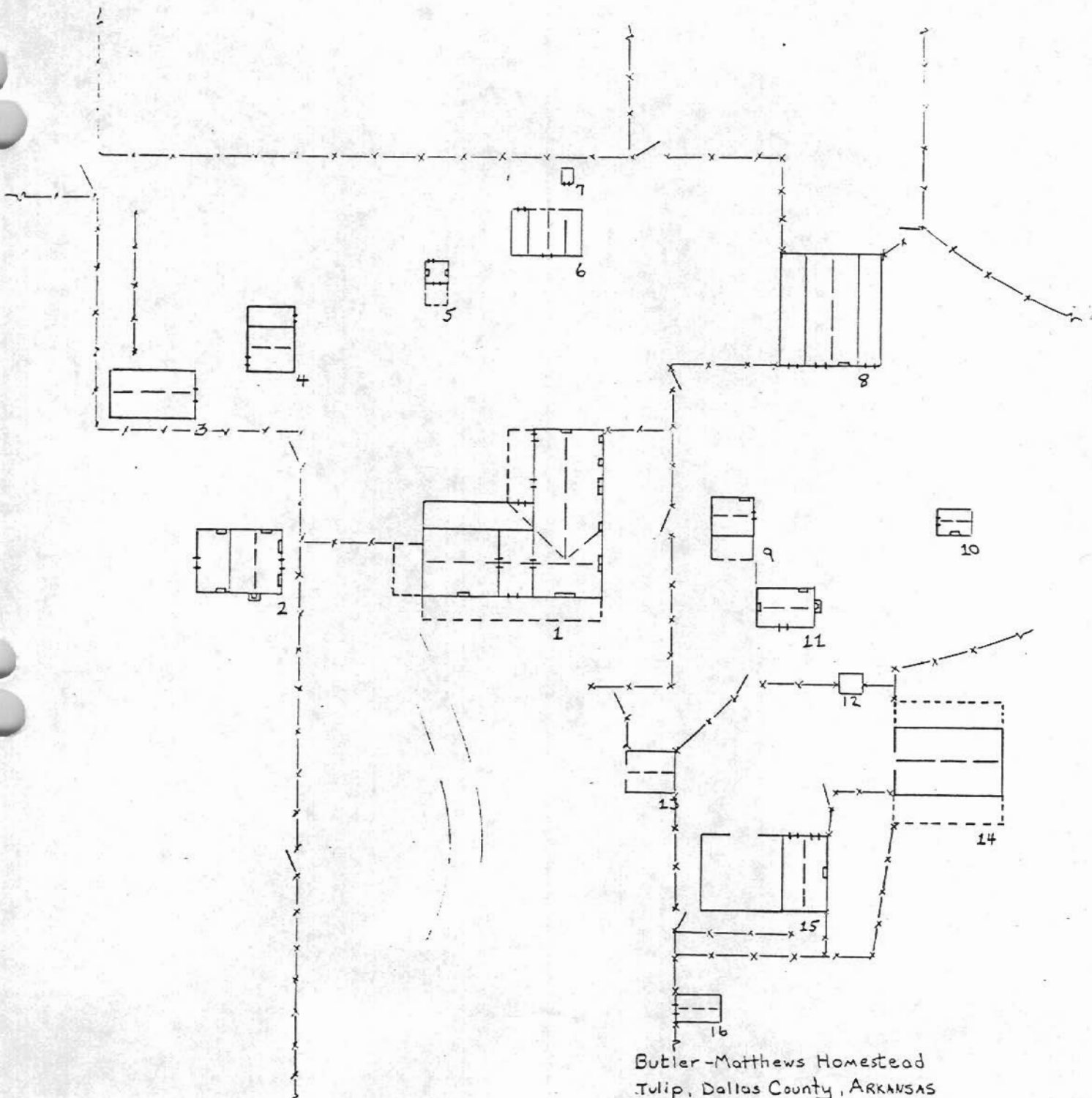
DA-4  
Butler-Matthews Homestead,  
structure #14, barn  
Sarah Brown, photographer  
May 10, 1982  
Negative on file at the AHPP  
View from the North



DA-4  
Butler-Matthews Homestead,  
structure #15, corn crib  
Sarah Brown, photographer  
May 10, 1982  
Negative on file at the AHPP  
View from the West



DA-4  
Butler-Matthews Homestead,  
structure #16, garage  
Sarah Brown, photographer  
May 10, 1982  
Negative on file at the AHPP  
View from the North



Butler-Matthews Homestead  
 Tulip, Dallas County, ARKANSAS  
 Not to Scale