

*Book Copy*

*NR Listed 5/26/95*

United States Department of the Interior  
National Park Service

NATIONAL REGISTER OF HISTORIC PLACES  
REGISTRATION FORM

=====

1. Name of Property

historic name: Frog Bayou Bridge

other name/site number: CW0160

=====

2. Location

street & number: State Highway 282 at crossing of Frog Bayou

not for publication: N/A

city/town: Mountainburg vicinity: X

state: AR county: Crawford code: AR 033 zip code: 72946

=====

3. Classification

Ownership of Property: Public-state

Category of Property: Structure

Number of Resources within Property:

Contributing	Noncontributing	
_____	_____	buildings
_____	_____	sites
_____	_____	structures
_____	_____	objects
_____	_____	Total

Number of contributing resources previously listed in the National Register: N/A

Name of related multiple property listing: Historic Bridges of Arkansas

=====  
**4. State/Federal Agency Certification**  
=====

As the designated authority under the National Historic Preservation Act of 1986, as amended, I hereby certify that this X nomination \_\_\_\_\_ request for determination of eligibility meets the documentation standards for registering properties in the National Register of Historic Places and meets the procedural and professional requirements set forth in 36 CFR Part 60. In my opinion, the property X meets \_\_\_\_\_ does not meet the National Register Criteria. \_\_\_\_\_ See continuation sheet.

Cathryn A. Slater

4-11-95

Signature of certifying official

Date

Arkansas Historic Preservation Program  
State or Federal agency and bureau

In my opinion, the property \_\_\_\_\_ meets \_\_\_\_\_ does not meet the National Register criteria. \_\_\_\_\_ See continuation sheet.

\_\_\_\_\_  
Signature of commenting or other official

\_\_\_\_\_  
Date

\_\_\_\_\_  
State or Federal agency and bureau

=====  
**5. National Park Service Certification**  
=====

I, hereby certify that this property is:

\_\_\_\_ entered in the National Register \_\_\_\_\_  
\_\_\_\_ See continuation sheet.  
\_\_\_\_ determined eligible for the \_\_\_\_\_  
National Register \_\_\_\_\_  
\_\_\_\_ See continuation sheet.  
\_\_\_\_ determined not eligible for the \_\_\_\_\_  
National Register \_\_\_\_\_  
\_\_\_\_ removed from the National Register \_\_\_\_\_  
\_\_\_\_ other (explain): \_\_\_\_\_

\_\_\_\_\_  
Signature of Keeper

\_\_\_\_\_  
Date  
of Action

=====  
**6. Function or Use**  
=====

Historic: TRANSPORTATION Sub: Road-related  
\_\_\_\_\_  
\_\_\_\_\_  
Current: TRANSPORTATION Sub: Road-related  
\_\_\_\_\_  
\_\_\_\_\_

=====

**7. Description**

=====

Architectural Classification:

Other  
\_\_\_\_\_  
\_\_\_\_\_

Other Description: Parker thru-truss

Materials:	foundation	<u>Stone/concrete</u>	roof	<u>N/A</u>
	walls	<u>Steel trusses</u>	other	<u>Asphalt and wood over steel</u>

Describe present and historic physical appearance. X See continuation sheet.

=====

**8. Statement of Significance**

=====

Certifying official has considered the significance of this property in relation to other properties: Local.

Applicable National Register Criteria: C

Criteria Considerations (Exceptions): N/A

Areas of Significance: ENGINEERING  
\_\_\_\_\_  
\_\_\_\_\_

Period(s) of Significance: 1942-1945

Significant Dates: 1942

Significant Person(s): N/A  
\_\_\_\_\_

Cultural Affiliation: N/A

Architect/Builder: Unknown  
\_\_\_\_\_  
\_\_\_\_\_

State significance of property, and justify criteria, criteria considerations, and areas and periods of significance noted above.  
X See continuation sheet.

=====
9. Major Bibliographical References
=====

See "Historic Bridges of Arkansas" MPS Nomination, Section H.

\_\_\_ See continuation sheet.

Previous documentation on file (NPS):

- preliminary determination of individual listing (36 CFR 67) has been requested.
- previously listed in the National Register
- previously determined eligible by the National Register
- designated a National Historic Landmark
- recorded by Historic American Buildings Survey # \_\_\_\_\_
- recorded by Historic American Engineering Record # \_\_\_\_\_

Primary Location of Additional Data:

- X State historic preservation office
- Other state agency
- Federal agency
- Local government
- University
- Other -- Specify Repository: \_\_\_\_\_

=====
10. Geographical Data
=====

Acreage of Property: Less than one

Table with 6 columns: UTM References, Zone Easting, Northing, Zone Easting, Northing. Rows A, B, C, D with values like 15, 392760, 3941990.

\_\_\_ See continuation sheet.

Verbal Boundary Description: \_\_\_ See continuation sheet.

Beginning at a point formed by the intersection of the western edge of State Highway 282 with a perpendicular line running parallel with the northern end of the bridge and located approximately 25 feet to the north thereof, proceed westerly for a distance of approximately 25 feet to its intersection with a perpendicular line running parallel with the bridge's western side; thence proceed southerly along said line for a distance of approximately 259 feet to its intersection with a perpendicular line; thence proceed easterly along said line for a distance of approximately 68.8 feet to its intersection with a perpendicular line; thence proceed northerly along said line for a distance of approximately 259 feet to its intersection with a perpendicular line; thence proceed northwesterly to the point of beginning.

Boundary Justification: \_\_\_ See continuation sheet.

This boundary includes all the property historically associated with this resource.

=====  
11. Form Prepared By  
=====

Name/Title: Ken Story, National Register/Survey Coordinator  
Organization: Arkansas Historic Preservation Program Date: 04/04/95  
Street & Number: 323 Center Street, Suite 1500 Telephone: (501) 324-9880  
City or Town: Little Rock State: AR Zip: 72201

**United States Department of the Interior**  
**National Park Service**

## **National Register of Historic Places**

### **Continuation Sheet**

Section number   7   Page   1  

---

#### **Description**

Located approximately two miles west of Arkansas Highway 71 on Hwy. 282, the Frog Bayou Bridge spans Frog Bayou, a small, shallow stream that runs into Cedar Creek to the south, which in turn runs into the Arkansas River. It is of the Parker steel through-truss design, and consists of one 150 foot span. The total length of the bridge is 209 feet, the width curb to curb is 15.4 feet, with a maximum width of 18.8 feet. The northern approach is supported by a stone and concrete abutment and a stone and concrete pier, while the southern approach is supported by a single stone and concrete abutment. The deck material is asphalt and wood over steel.

United States Department of the Interior  
National Park Service

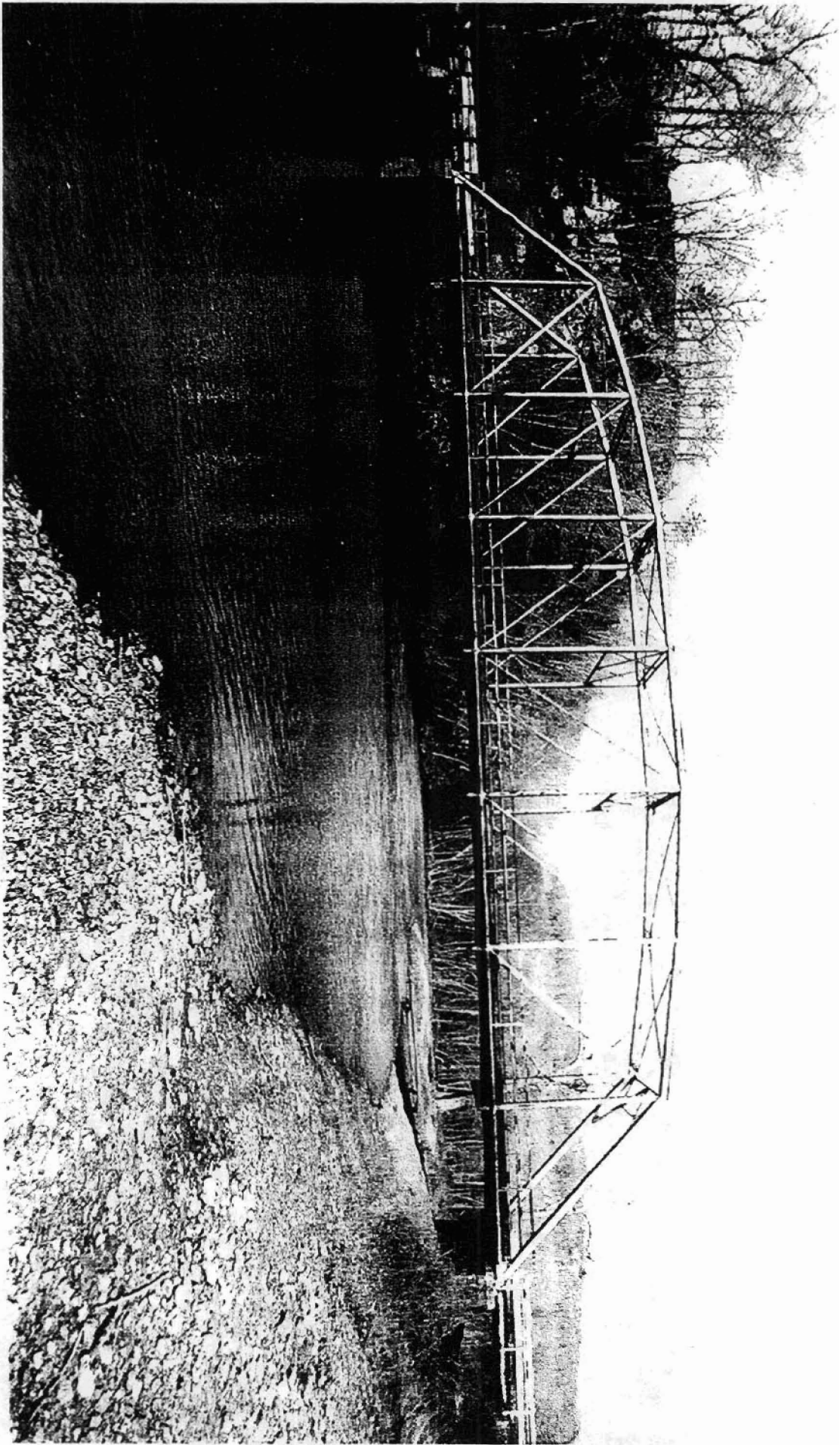
## National Register of Historic Places Continuation Sheet

Section number   8   Page   1  

---

### Significance

Constructed in 1942, the Frog Bayou Bridge is associated with the *World War II Era* historic context and is of the Parker steel through-truss type. Though the identity of its original designer does not survive, it was constructed in conjunction with the Arkansas State Highway Commission and thus may well have been designed by one of that state agency's engineers, if not by one of the public works engineers. Given its relatively intact condition it retains sufficient integrity to remain associated with its historic period; it is thus locally eligible under Criterion C.







7.5 MINUTE SERIES (TOPOGRAPHIC)  
94° 07' 30" W  
35° 37' N

3942  
FROM BAYOU  
BRIDGE  
15/392460/  
304,993



BM  
7891

35

35'