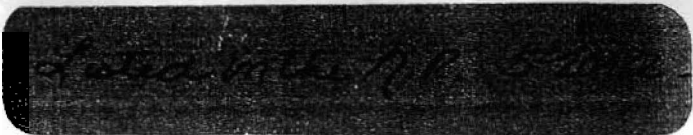


18-33-W100-62



United States Department of the Interior  
Heritage Conservation and Recreation Service

National Register of Historic Places  
Inventory—Nomination Form

For HCERS use only

received

date entered

See instructions in *How to Complete National Register Forms*  
Type all entries—complete applicable sections

CT0030

1. Name

historic Dabbs Store

and/or common

2. Location

street & number 1320 South Avalon

N/A not for publication

city, town West Memphis

N/A vicinity of

congressional district

First

state Arkansas

code

05

county

Crittenden

code

035

3. Classification

Category

- district
- building(s)
- structure
- site
- object

Ownership

- public
  - private
  - both
- Public Acquisition
- in process
  - being considered

Status

- occupied
  - unoccupied
  - work in progress
- Accessible
- yes: restricted
  - yes: unrestricted
  - no

Present Use

- agriculture
  - commercial
  - educational
  - entertainment
  - government
  - industrial
  - military
- museum
  - park
  - private residence
  - religious
  - scientific
  - transportation
  - other:

4. Owner of Property

name Pat K. & Nita H. Magruder

street & number 1320 South Avalon

city, town West Memphis

N/A vicinity of

state

Arkansas

5. Location of Legal Description

courthouse, registry of deeds, etc. Clerk's Office, Crittenden County Courthouse

street & number

city, town Marion

state

Arkansas

6. Representation in Existing Surveys

Arkansas Historic Preservation  
title Program State Survey

has this property been determined eligible?  yes  no

date 1981

federal  state  county  local

depository for survey records Arkansas Historic Preservation Program

city, town Little Rock

state

Arkansas

## 7. Description

<b>Condition</b>		<b>Check one</b>	<b>Check one</b>
<input checked="" type="checkbox"/> excellent	<input type="checkbox"/> deteriorated	<input checked="" type="checkbox"/> unaltered	<input checked="" type="checkbox"/> original site
<input type="checkbox"/> good	<input type="checkbox"/> ruins	<input type="checkbox"/> altered	<input type="checkbox"/> moved
<input type="checkbox"/> fair	<input type="checkbox"/> unexposed		date <u>N/A</u>

**Describe the present and original (if known) physical appearance**

### SUMMARY

Situated south of and isolated from the city's present commercial district, the Dabbs Store building reflects the history of West Memphis' (originally Hulbert) formative years. The brick two-and-one-half story with basement structure was erected on one of the few relatively high elevations on the Mississippi flood plains. Facing the tracks of Chicago, Rock Island and Pacific Railroad lines from its location diagonally across from the site of a now demolished depot, Dabbs Store retains great integrity of its exterior and interior fabric. The exterior is distinguished by broad storefront windows, wood canopy, decorative multi-paned transom, and a prominent cornice. The interior is characterized by its original fine mill work and pressed tin ceiling.

### ELABORATION

The asymmetrical principal (south) facade of Dabbs Store is composed of two storefront areas flanking a single entrance that leads to dwelling units upstairs. Access from street level is provided by two concrete stairs leading up to a concrete porch. One is symmetrically located in the front, while the secondary stair invites a western approach. Brick piers, capped with masonry copings, are positioned on the west and east ends of the porch as well as on either side of the principal stairway, subtly emphasizing the main approach to the store. The piers are connected by an iron porch rail.

The principal elevation's storefronts differ in the design of their entrances. A double leaf entry of single lights over wood panels articulates the west storefront (originally the facade of Hulbert's first post office and general store). The doors are flanked by single paned display windows mounted on decorative wood panels. A single door, one-light-over wood panel, entrance penetrates the east storefront and its display windows are of the same design as those of the west storefront. The Dabbs Brother's dry goods business originally occupied the east section. A single one-light over wood panel door separates the two storefronts. A wood canopy shades the building's storefronts and porch. Transom windows, arranged to reflect the delineation of the storefronts below, appear above the canopy. These windows are characterized by the spoke-like mullions that radiate from the center of each pane.

A fenestration of six-over-one double-hung windows articulates the second floor apartments. Two pairs of windows flank two single openings. The simply-framed windows have stoned sills that interrupt the brick stringcourse that defines the second story. An identical stringcourse marks the attic story which is penetrated by two cast iron vents. These stringcourse enrich all of the building's facades. The principal elevation is capped by an overhanging dentiled cornice that wraps around to the east and west elevations, terminating above their southern most window openings. A parapet with cut stone coping rises above the cornice.

The west elevation of the building presents a simple facade. Three window openings penetrate the basement wall and evidence of a painted sign, "Dabbs Brothers of Arkansas", dominate the first floor. Single window openings appear on the north and south sides of the sign area. The north window is a six-over-one window displaying articulation

UNITED STATES DEPARTMENT OF THE INTERIOR  
NATIONAL PARK SERVICE

**NATIONAL REGISTER OF HISTORIC PLACES  
INVENTORY -- NOMINATION FORM**

RECEIVED

DATE ENTERED

CONTINUATION SHEET

ITEM NUMBER 7 PAGE 2

typical to the building's fenestration while the south window, composed of a large pane surmounted by two vertical panes forming a transom relates closely to the design of the storefront windows. Two small stationary six pane windows are located just above the faded sign area. As on the principal facade, a fenestration of six-over-one windows identifies the second floor apartment area on the west elevation. Window details reiterate the articulation of the principal facade. Four vents penetrate the attic story and in the absence of a crowning cornice, the building's parapet caps the facade. A brick chimney, located on the south portion of the roof, rises above the parapet wall.

The delineation of the east elevation corresponds closely to the design of the west side of the building. Although the east and west second and attic story elevations are virtually identical, the first floor facade contains a centrally situated double-door entry surmounted by two two-over-two windows appearing almost as a transom. Originally, this doorway served as Dabbs Store's receiving entrance. A concrete platform, now demolished, once served as a loading area.

The north (rear) elevation, the least distinguished side of the building, is composed of alternating window and door openings on the first floor and four of the building's typical six-over-one windows in the second floor. On the first floor, a metal door with transom, the back-stairs entry, is placed between two windows. A metal fire stair extends across the rear elevation. A six panel wood door provides rear access to the general store and another metal door leads to the basement. While the rear elevation does not have a parapet, three stucco-covered brick chimneys that once served the apartments' kitchens, penetrate the roof.

On the interior, the first floor of the store is composed of two spacious areas divided by a center partition and the front and back stairways. Originally a general store and a post office area were located in the west side of the building. This space is distinguished by built-in shelving and free standing counters, built in 1912 by a traveling French carpenter, that occupy the west and east walls of the room. The finely crafted shelves, equipped with rolling ladders and capped with boxed cornices are adjustable and cover three-quarters of the wall space. The counters have decorative wood paneled bases which carry the beaded V-shaped base of the wider inlaid wood counter tops. The display windows that distinguish the exterior of the building also impart the spatial quality of the interior. Rising to transom height, the glass-walled display cases form a vestibule for the entrance that they flank. Beaded boards form the base of the cases. Ornate pressed tin panels featuring egg and dart mouldings cover the ceiling and plain pine boards form the floor.

UNITED STATES DEPARTMENT OF THE INTERIOR  
NATIONAL PARK SERVICE

**NATIONAL REGISTER OF HISTORIC PLACES  
INVENTORY -- NOMINATION FORM**

FOR NPS USE ONLY

RECEIVED

DATE ENTERED

CONTINUATION SHEET

ITEM NUMBER 7 PAGE 3

The east section of the building -- the dry goods area of the store -- survives in marked contrast to the west side of the building. The 60'x 20'x 14' space is divided into a large store and a small storage room. These areas do not exhibit the finely crafted accessories and rich materials that distinguish the general store and post office. A wall with a door opening separates the main store area from the storage room and beaded-boards cover the ceiling.

The second floor apartments were built as living quarters for the Dabbs brothers. Each spacious apartment includes a living room with fireplace, two bedrooms, kitchen and bath.

Fire and deterioration have necessitated modification and rehabilitation of the interior space. On the first floor the east storage room has been converted to a kitchen and bathroom. The original floor has been covered with a contemporary floor fabric in imitation of wood. The second floor apartments have been provided with modern kitchen facilities and walls have replaced the original pocket doors that once connected the two living rooms. Retaining the majority of its interior's integrity, the building has been successfully adapted for reuse as architects' offices. The Arkansas Historic Preservation Program approved the character of the exterior restoration and the interior's rehabilitation.

UNITED STATES DEPARTMENT OF THE INTERIOR  
NATIONAL PARK SERVICE

**NATIONAL REGISTER OF HISTORIC PLACES  
INVENTORY -- NOMINATION FORM**

FOR NPS USE ONLY

RECEIVED

DATE ENTERED

CONTINUATION SHEET

ITEM NUMBER 9

PAGE

2

Ferguson, John. Arkansas Lines, Hopkinsville, KY: Historical Record Association, Inc., 1965.

LaCoterie. West Memphis, 1927-1976. West Memphis: Printing Crafts, Inc., 1977

Neill, Kenneth, "West Memphis: Sister City or KISSN'Kin?," Memphis, February, 1979, n.p.

U.S. Post Office. Records of Appointments of Postmasters: Arkansas 1832-1971.  
(microfilm: Arkansas History Commission, Little Rock, AR)

U.S. Post Office. Geographical Site Location Reports: Arkansas, 1852-1945.  
(microfilm at Arkansas History Commission, L.R., AR)

## 8. Significance

Period	Areas of Significance—Check and justify below			
<input type="checkbox"/> prehistoric	<input type="checkbox"/> archeology-prehistoric	<input type="checkbox"/> community planning	<input type="checkbox"/> landscape architecture	<input type="checkbox"/> religion
<input type="checkbox"/> 1400-1499	<input type="checkbox"/> archeology-historic	<input type="checkbox"/> conservation	<input type="checkbox"/> law	<input type="checkbox"/> science
<input type="checkbox"/> 1500-1599	<input type="checkbox"/> agriculture	<input type="checkbox"/> economics	<input type="checkbox"/> literature	<input type="checkbox"/> sculpture
<input type="checkbox"/> 1600-1699	<input checked="" type="checkbox"/> architecture	<input type="checkbox"/> education	<input type="checkbox"/> military	<input type="checkbox"/> social/ humanitarian
<input type="checkbox"/> 1700-1799	<input type="checkbox"/> art	<input type="checkbox"/> engineering	<input type="checkbox"/> music	<input type="checkbox"/> theater
<input type="checkbox"/> 1800-1899	<input checked="" type="checkbox"/> commerce	<input type="checkbox"/> exploration/settlement	<input type="checkbox"/> philosophy	<input type="checkbox"/> transportation
<input checked="" type="checkbox"/> 1900-	<input type="checkbox"/> communications	<input type="checkbox"/> industry	<input type="checkbox"/> politics/government	<input type="checkbox"/> other (specify)
		<input type="checkbox"/> invention		

Specific dates 1912

Builder/Architect unknown

### Statement of Significance (in one paragraph)

Constructed in 1912, the Dabbs Store building is one of the oldest surviving structures in West Memphis. The store, built in the community of Hulbert, is closely tied to the development of this Mississippi riverport located across the river from Memphis, Tennessee. Hulbert, situated on one of the few elevated areas in this part of the Mississippi delta, was one of three turn of the century settlements that formed the nucleus of the present day city of West Memphis. The West Memphis area developed late and slowly due to its vulnerability to the flooding of the Mississippi River. Consequently, few permanent buildings were constructed or survived from the early years of the twentieth century and little unaltered historic fabric remains. Both architecturally and historically significant, Dabbs Store emerges as one of the city's finest resources tied to Hulbert before its incorporation into West Memphis. Harry R. Dabbs, migrating from Memphis, built his drygoods and general merchandise store soon after Hulbert became the location of the Rock Island Company's roundhouse and railroad yard in 1910. The store, clearly reflecting the early twentieth century settlement of the area, served the multi-purpose role of an early substantial structure in this once rural community. The building housed the town's post office, 1923-1948; possessed the first telephone installed in the area in 1912; and briefly served as the school before the construction of the local schoolhouse in 1913. Architecturally, Dabbs Store retains great integrity of its original fabric and setting. Today, the store's orientation to the railroad lines is a vivid reminder of the importance and dependence on the railroad in the development and stabilization of West Memphis as well as Hulbert. The exterior features its original storefronts, unusually decorative transom fenestration, brick stringcourses and prominent cornice all enhanced by the solidity of this freestanding brick building's cubic proportions. Of particular interest in the structure's interior spaces is the fine millwork and pressed metal ceilings.

# 9. Major Bibliographical References

See continuation sheet

# 10. Geographical Data

Acreege of nominated property less than one acre

Quadrangle name West Memphis, Ark.-Tenn.

Quadrangle scale 1:24000

UMT References

A 

1	5	7	5	5	7	6	0	3	8	9	0	8	5	0
Zone		Easting				Northing								

B 

Zone		Easting				Northing								

C 

Zone		Easting				Northing								

D 

Zone		Easting				Northing								

E 

Zone		Easting				Northing								

F 

Zone		Easting				Northing								

G 

Zone		Easting				Northing								

H 

Zone		Easting				Northing								

Verbal boundary description and justification

Part of lot 8, all of 9, 10 of Block 61, Showers Sub-division, West Memphis, AR.

List all states and counties for properties overlapping state or county boundaries

state N/A code county code

state code county code

# 11. Form Prepared By

name/title Donald R. Brown, Historian

organization Arkansas Historic Preservation Program

date June 9, 1981

street & number Suite 500, Continental Building

telephone (501) 371-2763

city or town Little Rock

state Arkansas

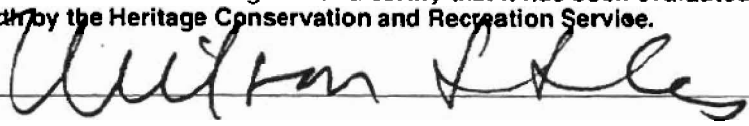
# 12. State Historic Preservation Officer Certification

The evaluated significance of this property within the state is:

national  state  local

As the designated State Historic Preservation Officer for the National Historic Preservation Act of 1966 (Public Law 89-665), I hereby nominate this property for inclusion in the National Register and certify that it has been evaluated according to the criteria and procedures set forth by the Heritage Conservation and Recreation Service.

State Historic Preservation Officer signature



title State Historic Preservation Officer

date 3/31/82

For HCERS use only

I hereby certify that this property is included in the National Register

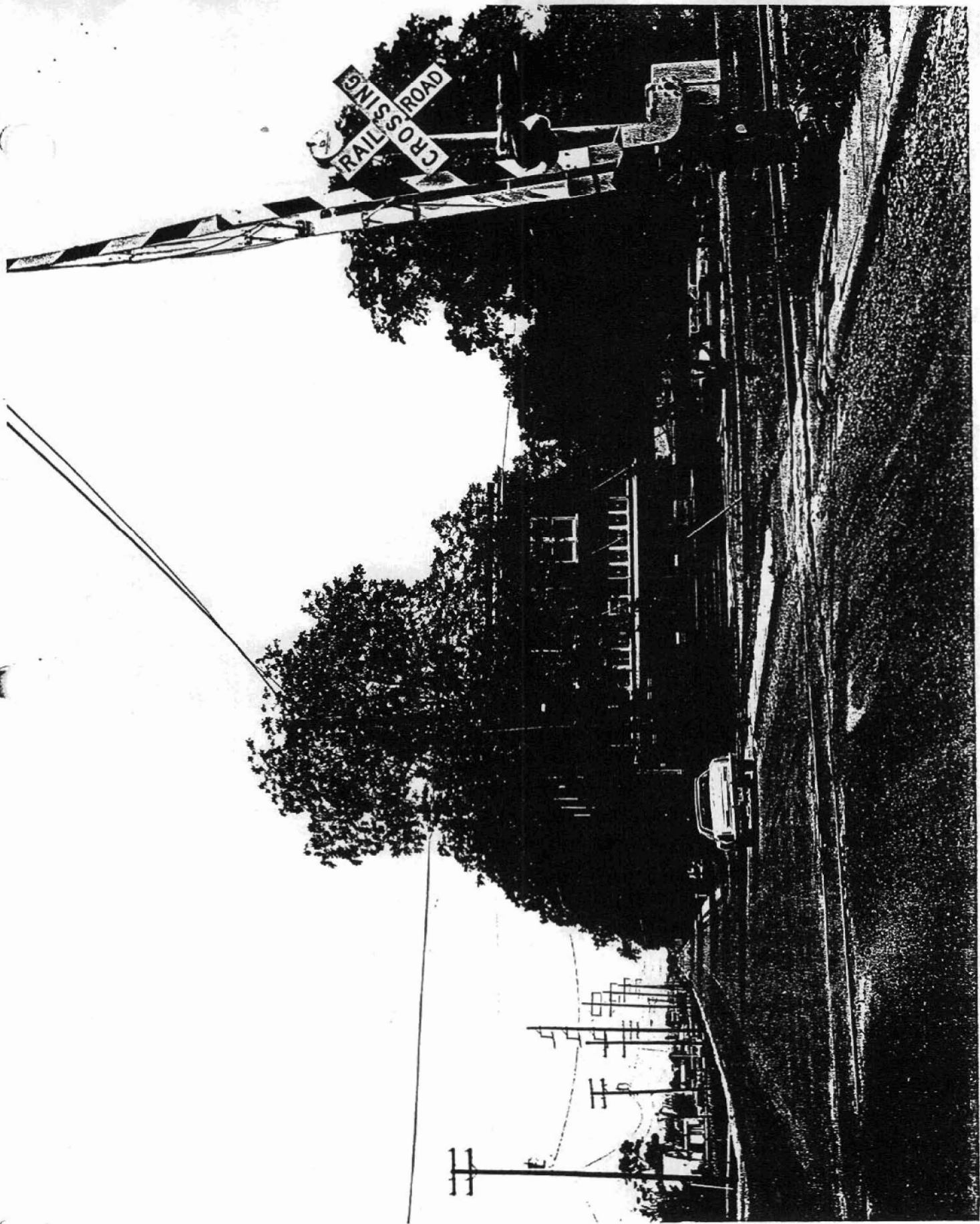
date

Keeper of the National Register

Attest:

date

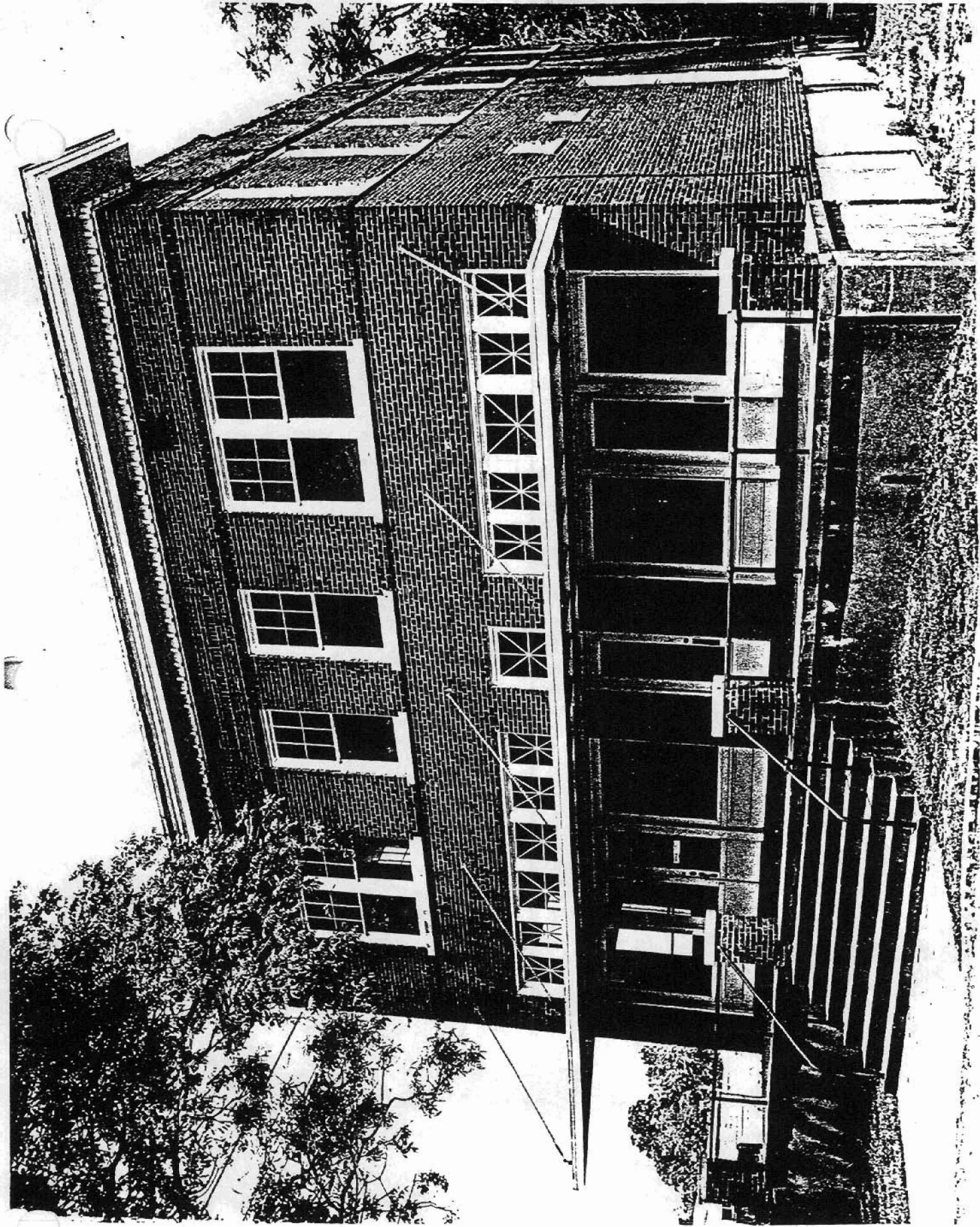
Chief of Registration





Dabbs Store  
West Memphis, Arkansas

Bob Dunn, photographer  
May, 1981  
Negative at AHPP  
View from South  
No. 1 of 7

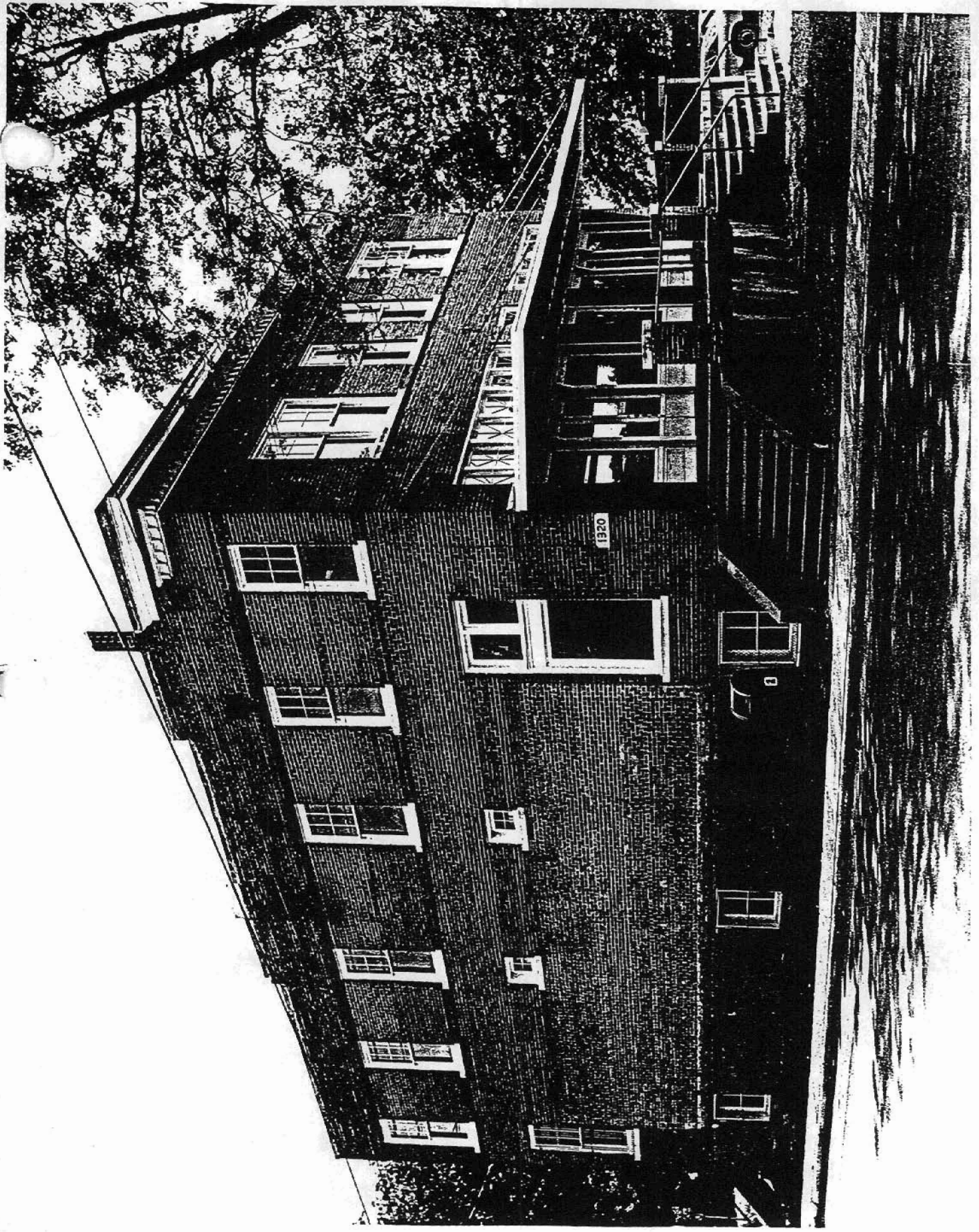


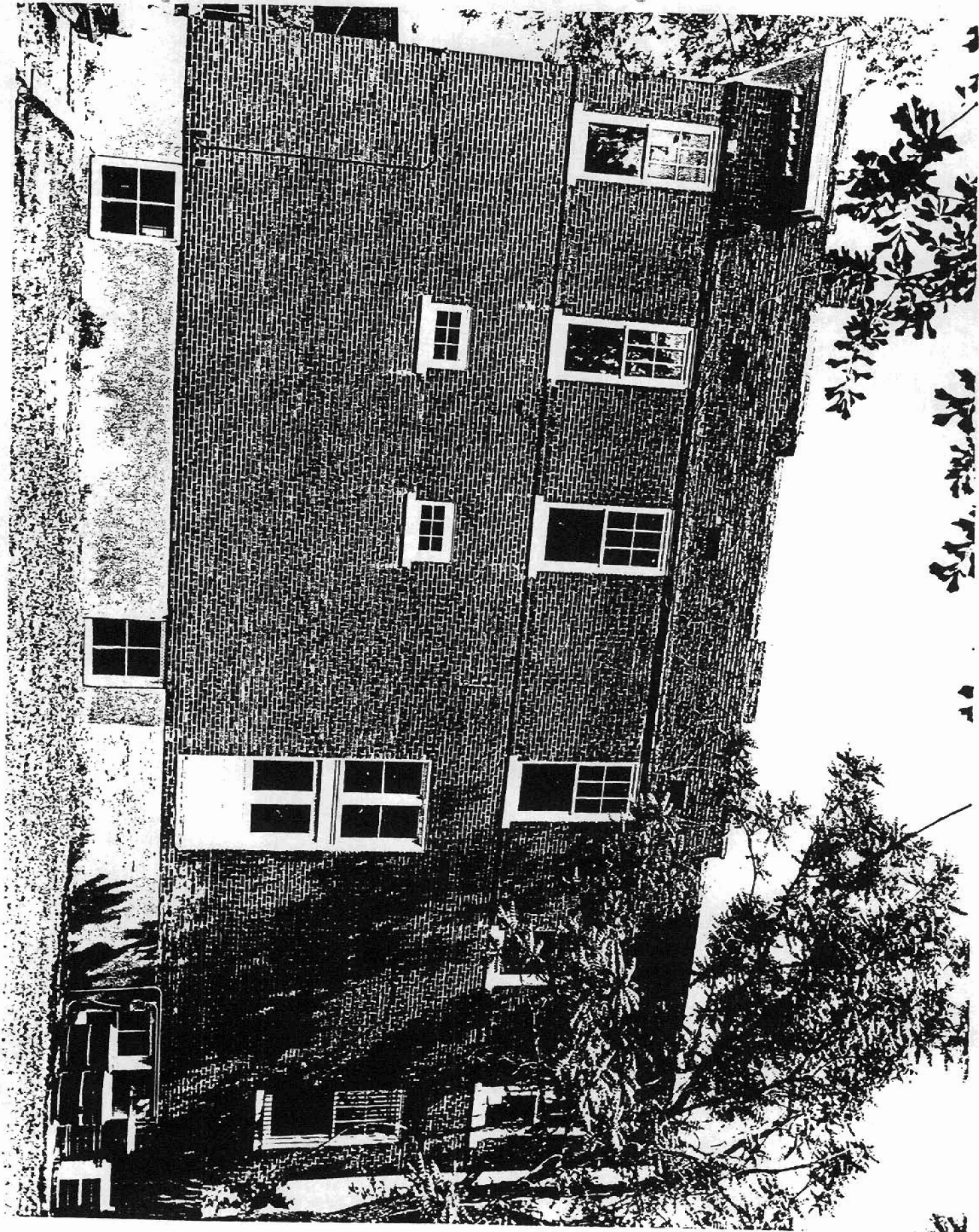
Dabbs Store  
West Memphis, Arkansas

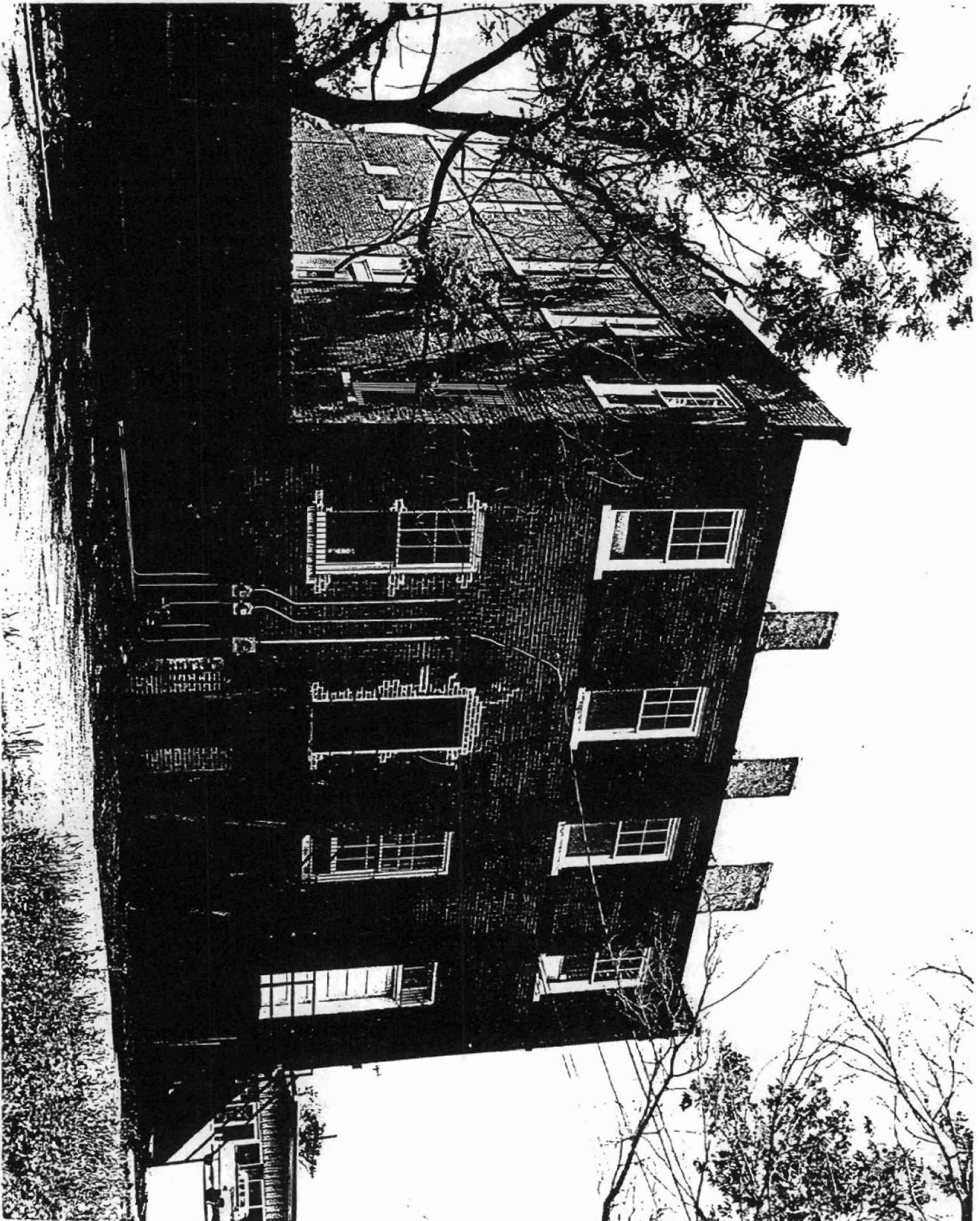
Bob Dunn, photographer  
May, 1981  
Negative at AHP  
View from Southwest  
No. 2 of 7

4

4







Dabbs Store  
West Memphis, Arkansas

Bob Dunn, photographer  
May, 1981  
Negative at AHPP  
View from Northeast  
No. 5 of 7

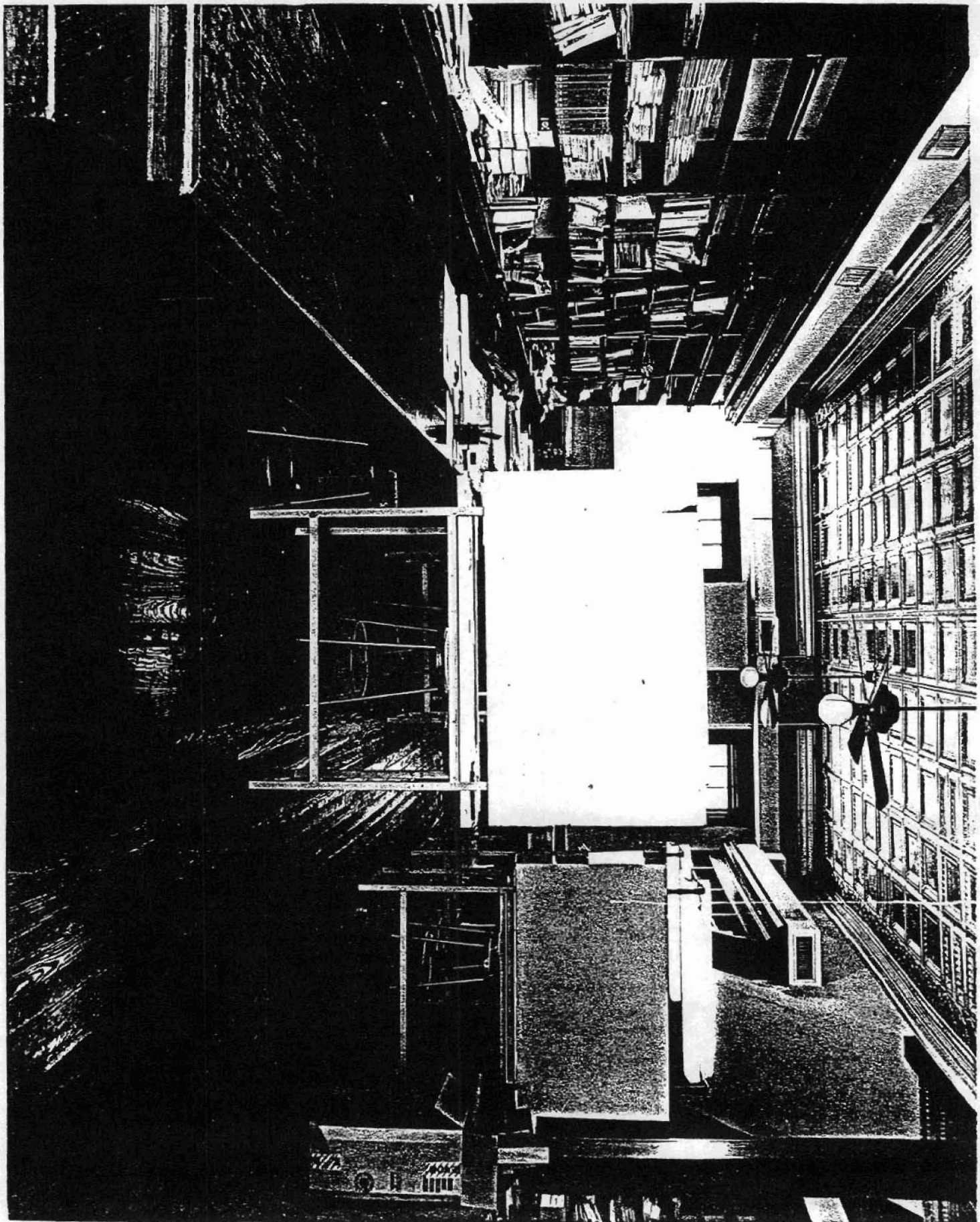






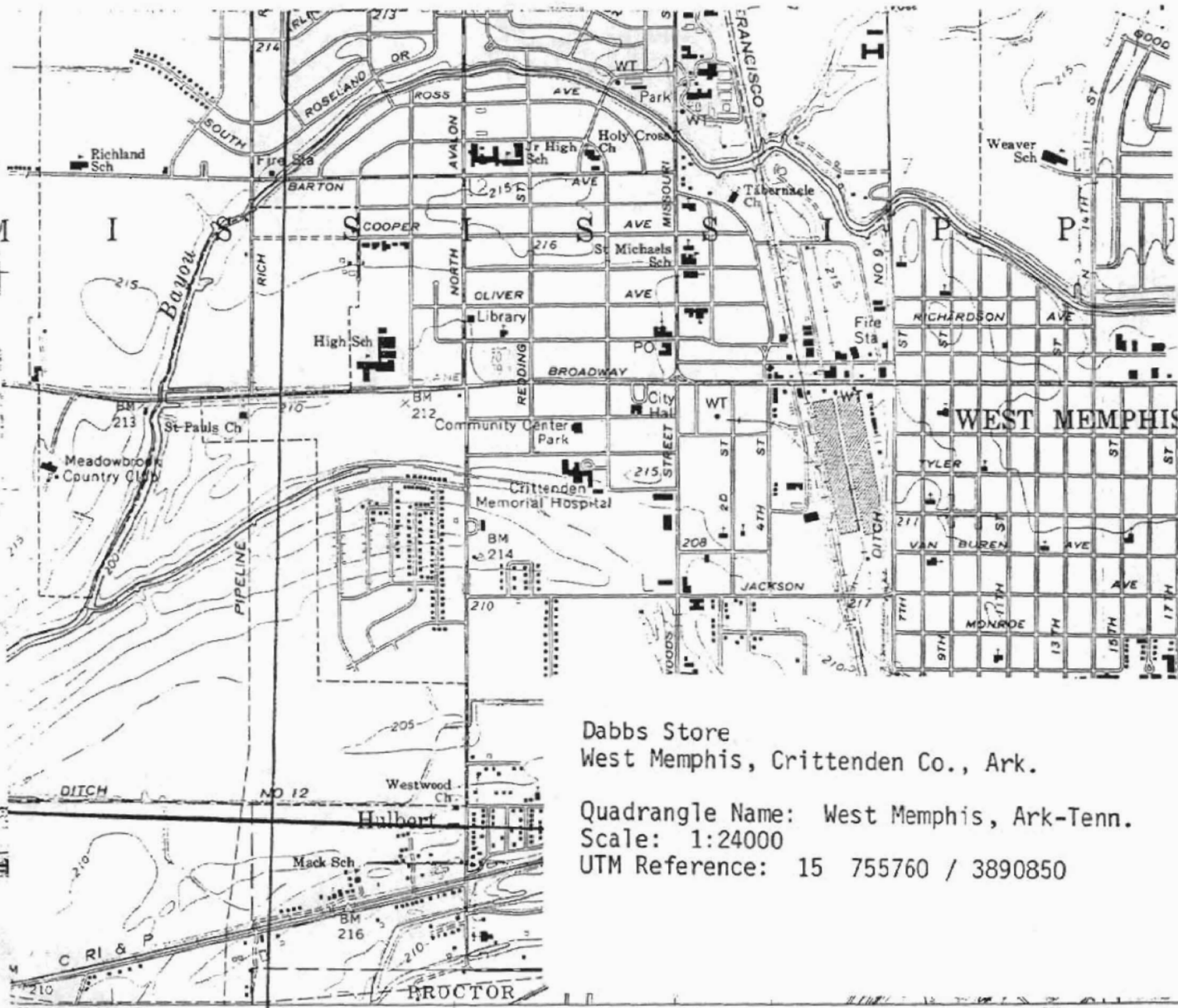
Dabbs Store  
West Memphis, Arkansas

Bob Dunn, photographer  
May, 1981  
Negative at AHPP  
View from North  
No. 6 of 7



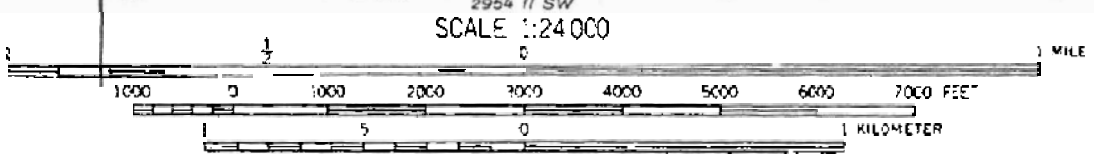
Dabbs Store  
West Memphis, Arkansas

Bob Dunn, photographer  
May, 1981  
Negative at AHPP  
View from South  
No. 7 of 7



Dabbs Store  
West Memphis, Crittenden Co., Ark.

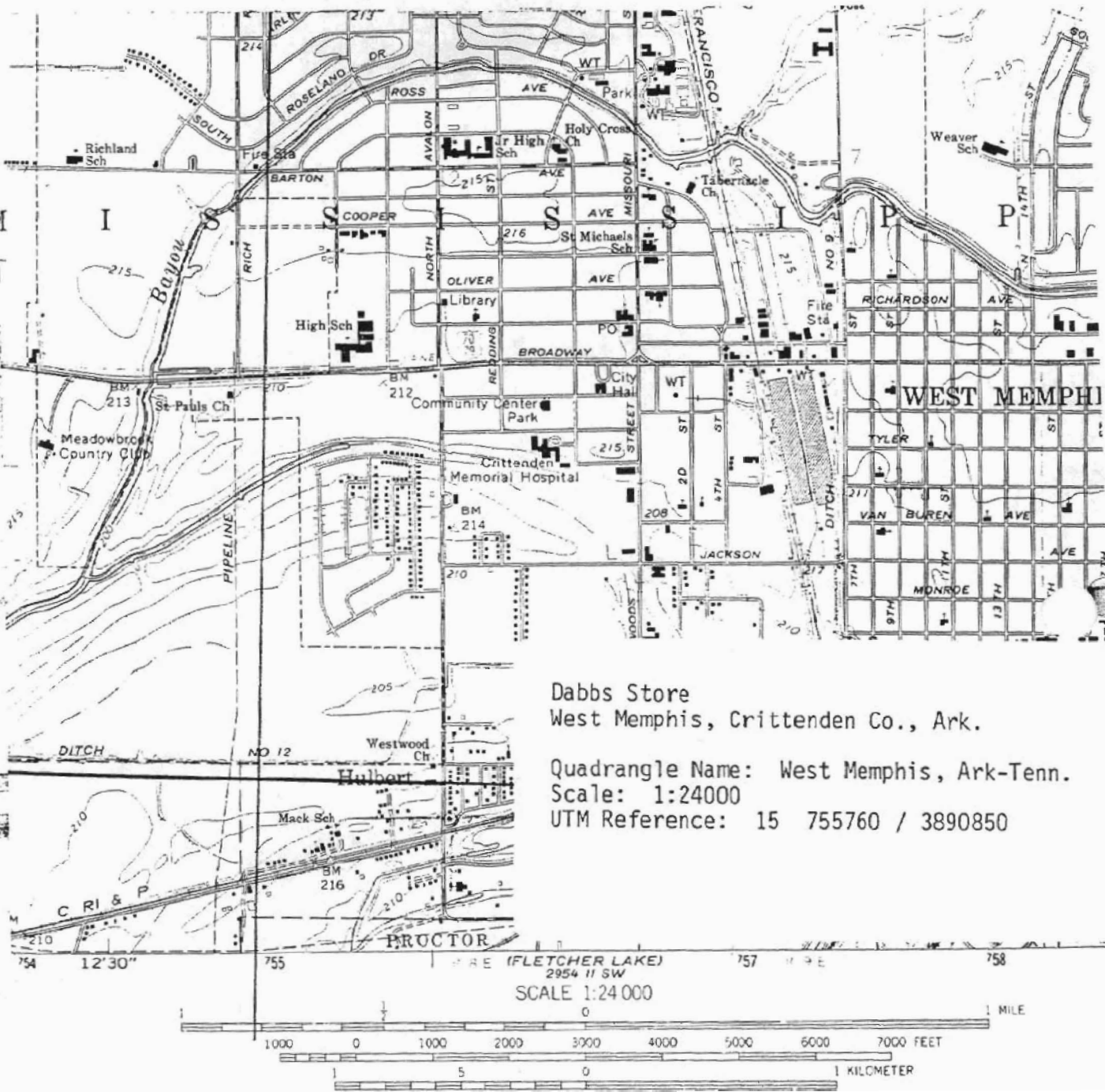
Quadrangle Name: West Memphis, Ark-Tenn.  
Scale: 1:24000  
UTM Reference: 15 755760 / 3890850



CONTOUR INTERVAL 5 FEET  
DATUM IS MEAN SEA LEVEL

THIS MAP COMPLIES WITH NATIONAL MAP ACCURACY STANDARDS  
FOR SALE BY U.S. GEOLOGICAL SURVEY, DENVER, COLO. 80225 OR WASHINGTON, D. C. 20242,  
TENNESSEE DIVISION OF GEOLOGY, NASHVILLE, TENN. 37219,  
ARKANSAS GEOLOGICAL COMMISSION, LITTLE ROCK, ARK. 72201,  
AND MISSISSIPPI RIVER COMMISSION, VICKSBURG, MISS. 39181  
A FOLDER DESCRIBING TOPOGRAPHIC MAPS AND SYMBOLS IS AVAILABLE ON REQUEST

TIC NORTH  
OF SHEET



CONTOUR INTERVAL 5 FEET  
DATUM IS MEAN SEA LEVEL

THIS MAP COMPLIES WITH NATIONAL MAP ACCURACY STANDARDS  
FOR SALE BY U. S. GEOLOGICAL SURVEY, DENVER, COLO. 80225 OR WASHINGTON, D. C. 20242.  
TENNESSEE DIVISION OF GEOLOGY, NASHVILLE, TENN. 37219,  
ARKANSAS GEOLOGICAL COMMISSION, LITTLE ROCK, ARK. 72201,  
AND MISSISSIPPI RIVER COMMISSION, VICKSBURG, MISS. 39181  
A FOLDER DESCRIBING TOPOGRAPHIC MAPS AND SYMBOLS IS AVAILABLE ON REQUEST

TIC NORTH  
OF SHEET