

March 27,
APRIL 6, 1990

**United States Department of the Interior
National Park Service**

**National Register of Historic Places
Registration Form**

This form is for use in nominating or requesting determinations of eligibility for individual properties or districts. See instructions in *Guidelines for Completing National Register Forms* (National Register Bulletin 16). Complete each item by marking "x" in the appropriate box or by entering the requested information. If an item does not apply to the property being documented, enter "N/A" for "not applicable." For functions, styles, materials, and areas of significance, enter only the categories and subcategories listed in the instructions. For additional space use continuation sheets (Form 10-900a). Type all entries.

1. Name of Property

historic name Woman's Progressive Club
other names/site number _____

2. Location

street & number Southwest corner of Rowena St. and Merriman Ave. not for publication N/A
city, town Wynne vicinity N/A
state Arkansas code AR county Cross code AR 037 zip code 72396

3. Classification

Ownership of Property	Category of Property	Number of Resources within Property	
<input checked="" type="checkbox"/> private	<input checked="" type="checkbox"/> building(s)	Contributing	Noncontributing
<input type="checkbox"/> public-local	<input type="checkbox"/> district	<u>1</u>	_____ buildings
<input type="checkbox"/> public-State	<input type="checkbox"/> site	_____	_____ sites
<input type="checkbox"/> public-Federal	<input type="checkbox"/> structure	_____	_____ structures
	<input type="checkbox"/> object	_____	_____ objects
		<u>1</u>	_____ Total

Number of related multiple property listing: N/A

Number of contributing resources previously listed in the National Register: N/A

4. State/Federal Agency Certification

As the designated authority under the National Historic Preservation Act of 1966, as amended, I hereby certify that this nomination request for determination of eligibility meets the documentation standards for registering properties in the National Register of Historic Places and meets the procedural and professional requirements set forth in 36 CFR Part 60. In my opinion, the property meets does not meet the National Register criteria. See continuation sheet.

Cathryn A. Boyd Signature of certifying official 2-7-90 Date
Arkansas Historic Preservation Program
State or Federal agency and bureau

In my opinion, the property meets does not meet the National Register criteria. See continuation sheet.

Signature of commenting or other official _____ Date

State or Federal agency and bureau

5. National Park Service Certification

I, hereby, certify that this property is:

entered in the National Register.
 See continuation sheet.

determined eligible for the National Register. See continuation sheet.

determined not eligible for the National Register.

removed from the National Register.

other, (explain:) _____

Signature of the Keeper _____ Date of Action

6. Function or Use

Historic Functions (enter categories from instructions)

SOCIAL/Meeting Hall

Current Functions (enter categories from instructions)

SOCIAL/Meeting Hall

7. Description

Architectural Classification

(enter categories from instructions)

LATE 19th AND EARLY 20TH CENTURY

AMERICAN MOVEMENTS/Bungalow

LATE 19TH AND 20TH CENTURY REVIVALS/

Colonial Revival

Materials (enter categories from instructions)

foundation Concrete

walls Brick

roof Asphalt

other Wood

Describe present and historic physical appearance.

United States Department of the Interior
National Park Service

National Register of Historic Places Continuation Sheet

Section number 7 Page 1

Summary

The Woman's Progressive Club is a single story, brick public building designed in the low, massive style popular with the Works Progress Administration (WPA) in the 1930's. Its gable-on-hip roof covers a fundamentally rectangular plan consisting of a large auditorium and stage directly behind the main facade.

Elaboration

The Woman's Progressive Club is a single story, brick public building designed in the low, massive style popular with the Works Progress Administration (WPA) in the 1930's, though it also features certain Colonial Revival details. Its gable-on-hip roof covers a fundamentally rectangular plan consisting of a large auditorium and stage directly behind the northern or front facade, with additional office and kitchen space to the south beneath a truncated hipped roof and a flat roof with a parapet. Three interior brick chimneys project from the roofline: the largest from the intersection of the truncated hip roof with the gable-on-hip roof, near the eastern end; the second from the southern slope of the truncated hip roof; and the third from the top of the flat roof southern room, abutting the wall of the truncated hip roof section. The roof is covered with composition shingles except for the flat roof section, which is covered with asphalt roll roofing. The windows throughout the building are recessed slightly into the brick walls, giving the wall surface more dimension. The walls are brick and supported on a continuous cast concrete foundation.

The northern or front elevation is symmetrical, with a central, flat roof Colonial Revival entrance porch flanked by four six-over-six wood sash windows. The entrance porch is formed by a flat roof supported on curved, wrought iron metal brackets. Two separate pair of Classical pilasters, each supporting an entablature and framing the half-sidelights below, project from the wall and the simpler frame which surrounds the single-leaf, six-panel wood entrance door. A multi-pane fanlight above is set into a the brick wall and trimmed with a wood arch and decorative keystone. Original stylized Colonial Revival electric lights flank the entrance porch directly above the two bronze plaques which identify both the proprietors of the building (to the east of the entry: "Woman's Progressive Club") and the builders (to the west of the entry: "USA, 1936, WPA"). The windows are ornamented only by slightly projecting brick sills and wood shutters, painted green.

The eastern elevation is punctuated by three symmetrically-placed six-over-six wood sash windows in the auditorium, a double-leaf entry in the center of the southern room to the rear, and the louvered vent in the gable end above. The entrance to the south is framed by a pair of Classical pilasters of slightly different form than those seen on the northern entry and which support a much taller and more elaborate entablature. The western elevation is entered through two single-leaf entries at either end of the elevation: one in the wall to the north (through which access is gained to the stage area at the front of the auditorium) -- which is accessed via a concrete stair with brick stoops and a six-pane door -- and an identical door in the rear room to the south. A single, smaller six-over-six wood sash window with shutters lights one of the rooms behind the stage toward the south. The louvered vent in the gable end above finishes the elevation.

The southern elevation is entered via a pair of single-leaf entries at the western end, one into the wall of the main building and one into the small flat roof room. A small fixed wood window lights this room to the east of the door. The wall of the larger rear section is lighted with a grouped pair of four-over-four wood sash windows to the west, a nine-pane fixed wood window toward the center, and three identical six-over-six wood sash windows toward the eastern wall.

The interior retains its original floor plan and principal design elements (stage, auditorium, boxed beams and columns, solid six-panel wood doors), though the walls have been panelled recently and a new acoustic tile ceiling installed. Structural concerns raised by the installation of new air conditioning equipment in the crawl space above the ceiling required the recent addition of two new supports in the center of the auditorium, though these have

**United States Department of the Interior
National Park Service**

**National Register of Historic Places
Continuation Sheet**

Section number 7 Page 2

been boxed to match the originals along the walls. Otherwise the building is unaltered.

United States Department of the Interior
National Park Service

National Register of Historic Places
Continuation Sheet

Section number 8 Page 1

Summary

The Woman's Progressive Club is the building in the city of Wynne most closely associated with the club for which it was built, the oldest civic organization in Cross County and one which was a forerunner in the organization of many of the county's earliest cultural and educational programs. In addition, through its combination of typical plan and elevation with Colonial Revival ornament and detail, this building remains an intact and relatively ornate example of Works Progress Administration (WPA) construction.

Elaboration

Located in the railroad town of Wynne (which was formally settled in 1883 around the intersection of the Memphis & Bald Knob Railroad and Helena & Knobel divisions of the St. Louis, Iron Mountain and Southern Railroad), the Woman's Progressive Club was organized in 1913 with but five charter members. It was the earliest such organization in Cross County, predating the Wynne Rotary Club by twelve years. From the beginning the Club was active in promoting local interest in cultural, educational, and social events, including lectures, pageants, beauty revues, talent shows, fundraisers for charity, and exhibitions. The activity of its members and the desire among the city's younger women to participate resulted in the formation of the Junior Progressive Club for high school girls in 1940.

For the first twenty years of its existence the Woman's Progressive Club met informally in members' homes; however, the lack of a site for holding these events prompted the members to action. Not surprisingly, it was a community effort which saw the project through to completion. Naturally, the Club members themselves were active in attempting to raise funds for the project, including many member donations. In 1935 the Club arranged for Works Progress Administration (WPA) labor which began construction at the site of the former Hancock family home on Merriman Street. However, no less than fifteen civic-minded men (many of whom were husbands of Club members) had voluntarily signed bank notes beforehand to help purchase the site and finance the construction of the building. The City of Wynne also aided the Club in purchasing construction materials. On November 7, 1935, Mrs. J.E. Harris, one of the original charter members, removed the first shovel of dirt from the site to make way for the new foundation. Mr. C.B. Bailey was the engineer for the original construction and E.A. Quessenberry was the construction foreman.

However, the construction negotiations with the local WPA labor force were not without their problems. Mrs. C.A. Forbes, the president of the Club during the construction (1935-37), entered the building one day toward the end of the construction process to find that the WPA crew had been ordered off the job by the work boss without having completed the laying of the floors (the reason for the order is not known). Protracted negotiations with both the work boss and Floyd Sharp, the head of the Arkansas WPA operations in Little Rock, produced no resolution. Soon thereafter a Mr. J.E. Holland, president of the Wynne Rotary Club, stepped in and arranged for the resumption of the work by the WPA crew. The building, with a seating capacity of 250 people, was completed at a cost of \$8,000 and dedicated on March 12, 1937.

Though the Woman's Progressive Club prospered through the 1960's, the Club's level of activity has decreased in the recent past and is now primarily confined to the maintenance and administration of this building, which remains the best meeting facility in the city by virtue of both its capacity and acoustics. Nevertheless, the Woman's Progressive Club has continued in operation without interruption since 1913.

The Woman's Progressive Club building was designed by the architect Walter Duffy, Jr. in what has been called a "modified Colonial." The use of six-over-six wood sash windows is not unusual in WPA-constructed buildings; however, the installation of a delicately detailed, Federal fanlight within the structure of the building, the ornamentation of two of the entries with relatively elaborate Colonial Revival details, and the selection of Colonial Revival exterior electric lanterns raises this design above the simple educational and institutional public buildings

**United States Department of the Interior
National Park Service**

**National Register of Historic Places
Continuation Sheet**

Section number 8 Page 2

built by the WPA throughout Arkansas during this period. The exterior of the Club's building remains almost completely intact and unchanged from the day it was completed and so stands today as one of the finest WPA designs in Arkansas, and certainly the best in the city of Wynne.

United States Department of the Interior
National Park Service

National Register of Historic Places Continuation Sheet

Section number 9 Page 1

Articles of Incorporation, Woman's Progressive Club, Wynne, Arkansas, on file at the Secretary of State's Office, State Capitol, Little Rock.

Chowning, Robert W., History of Cross County, Arkansas, (Wynne, 1955), pp. 41-42.

Emergency Relief Administration, A Review of Work Relief Activities in Arkansas, April 1st, 1934 to July 1st, 1935, (Little Rock, 1935).

"Sunday Marks Anniversary of Club Construction," The Progress, November 3, 1982, p. 3.

United States Department of the Interior
National Park Service

National Register of Historic Places Continuation Sheet

Section number 10 Page 1

Verbal Boundary Description

Beginning at the northwest corner of lot 4, block 9, Martin's Division to the city of Wynne; thence proceed easterly 40 feet to the western edge of Rowena Street; thence proceed in a southerly direction parallel to the west line of said lot 4 to the northern edge of the alley running east and west through said block 9; thence in a westerly direction 40 feet to the southwest corner of lot 4; thence in a northerly direction along the west line of said lot 4 to the point of beginning.

8. Statement of Significance

Certifying official has considered the significance of this property in relation to other properties:

nationally statewide locally

Applicable National Register Criteria A B C D

Criteria Considerations (Exceptions) A B C D E F G

Areas of Significance (enter categories from instructions)

Entertainment/Recreation

Social History

Architecture

Period of Significance

1935-1937

Cultural Affiliation

N/A

Architect/Builder

Works Progress Administration

State significance of property, and justify criteria, criteria considerations, and areas and periods of significance noted above.

See continuation sheet

Previous documentation on file (NPS):

- preliminary determination of individual listing (36 CFR 67) has been requested
- previously listed in the National Register
- previously determined eligible by the National Register
- designated a National Historic Landmark
- recorded by Historic American Buildings Survey # _____
- recorded by Historic American Engineering Record # _____

See continuation sheet

Primary location of additional data:

- State historic preservation office
- Other State agency
- Federal agency
- Local government
- University
- Other

Specify repository: _____

10. Geographical Data

Acreeage of property Less than one.

UTM References

A

1	5
---	---

7	0	1	2	1	0
---	---	---	---	---	---

3	8	9	9	8	9	0
---	---	---	---	---	---	---

 Zone Easting Northing

C

--	--

--	--	--	--	--	--

--	--	--	--	--	--	--

B

--	--

--	--	--	--	--	--

--	--	--	--	--	--	--

 Zone Easting Northing

D

--	--

--	--	--	--	--	--

--	--	--	--	--	--	--

See continuation sheet

Verbal Boundary Description

East part of Block 7, Brookfield's Original Division, City of Wynne, Arkansas.

See continuation sheet

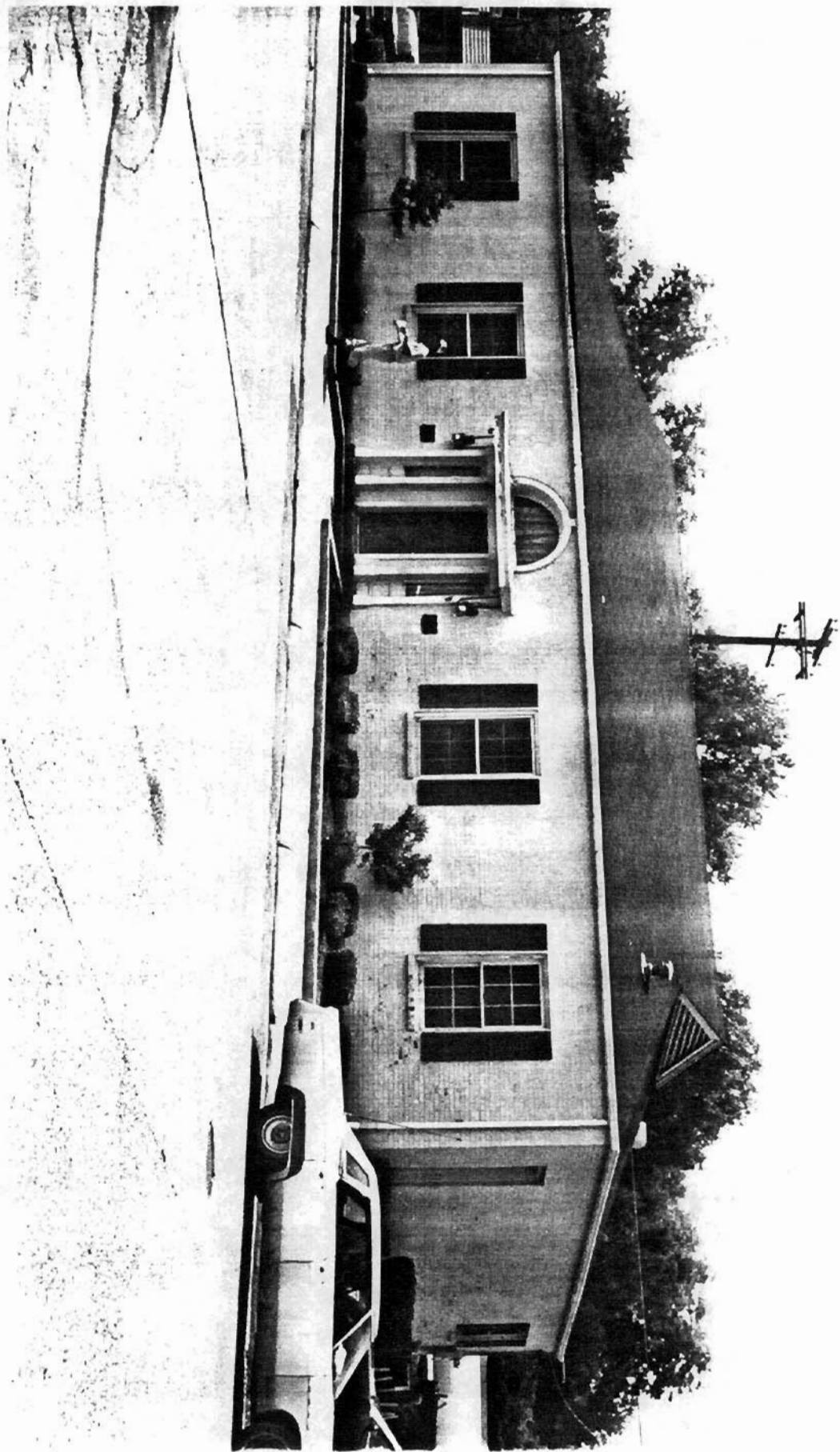
Boundary Justification

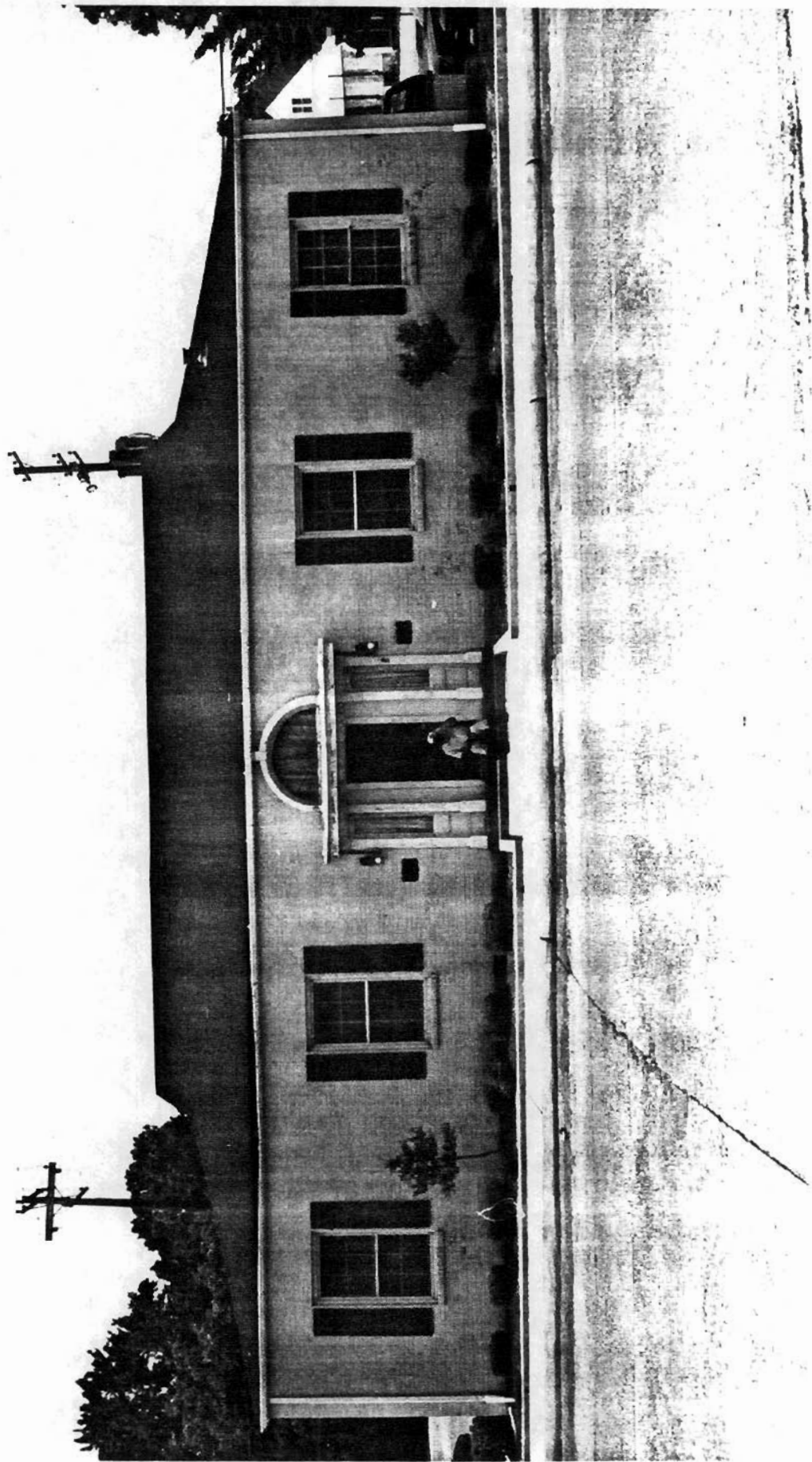
This boundary includes all the property historically associated with this resource.

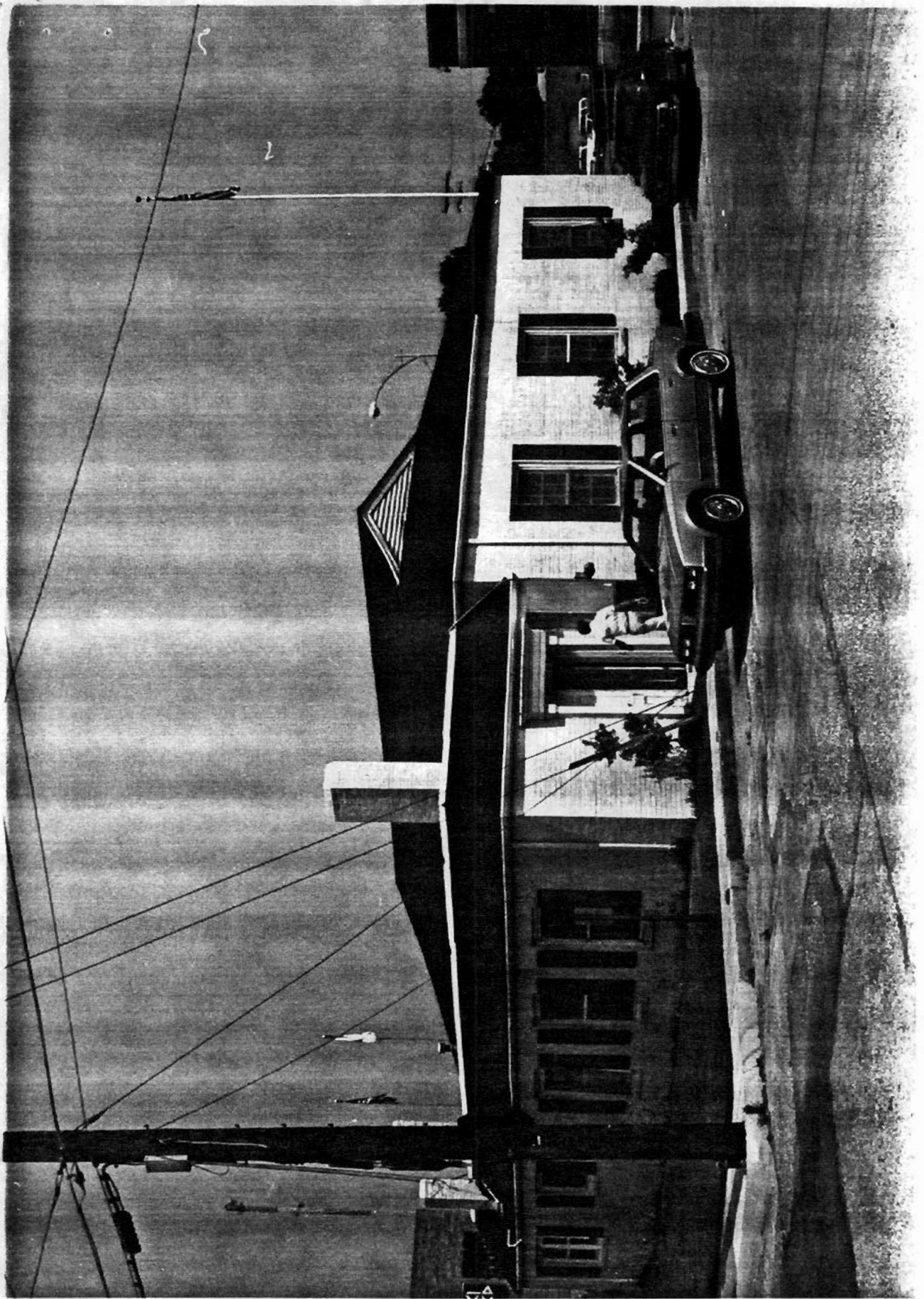
See continuation sheet

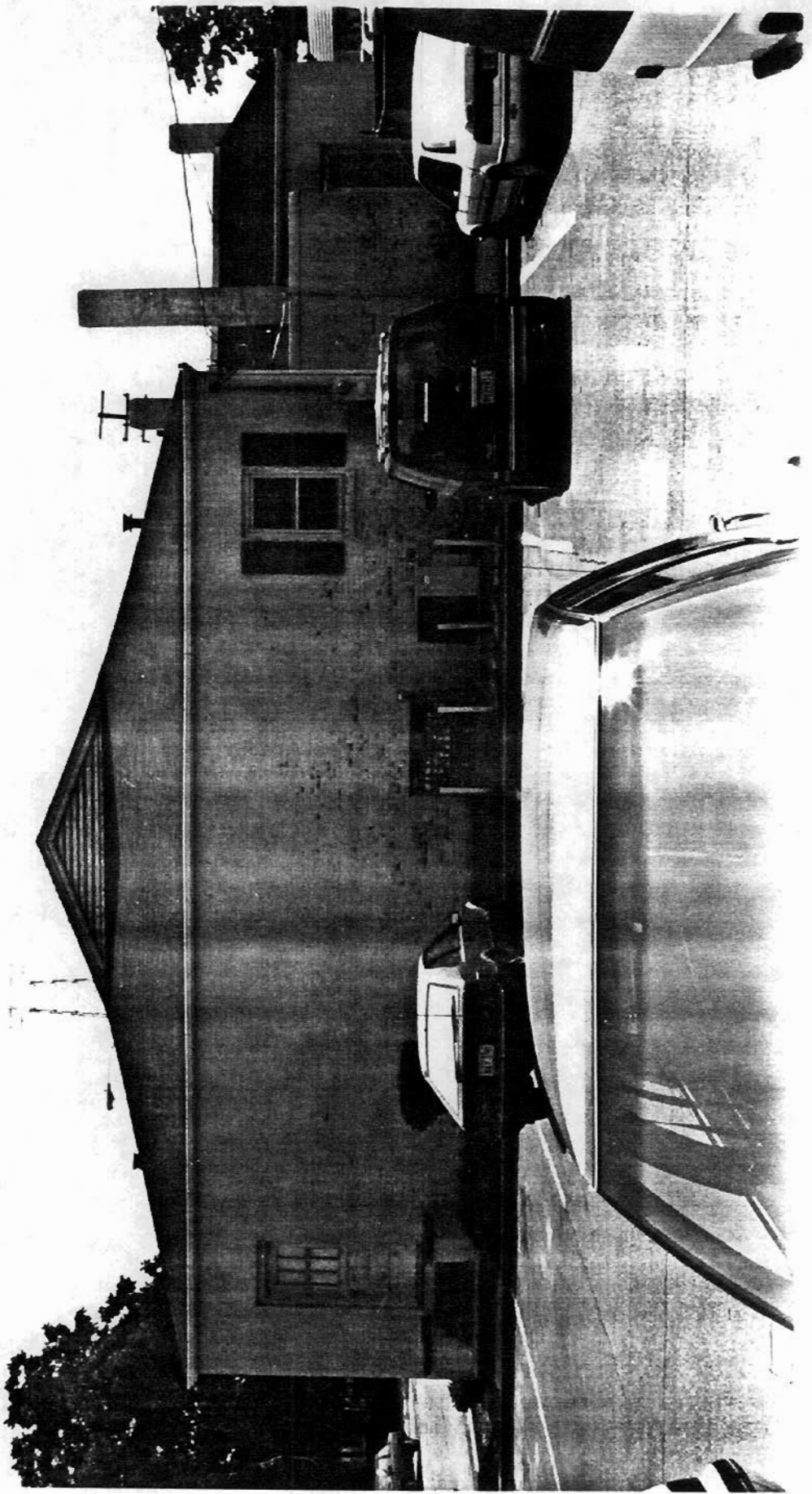
11. Form Prepared By

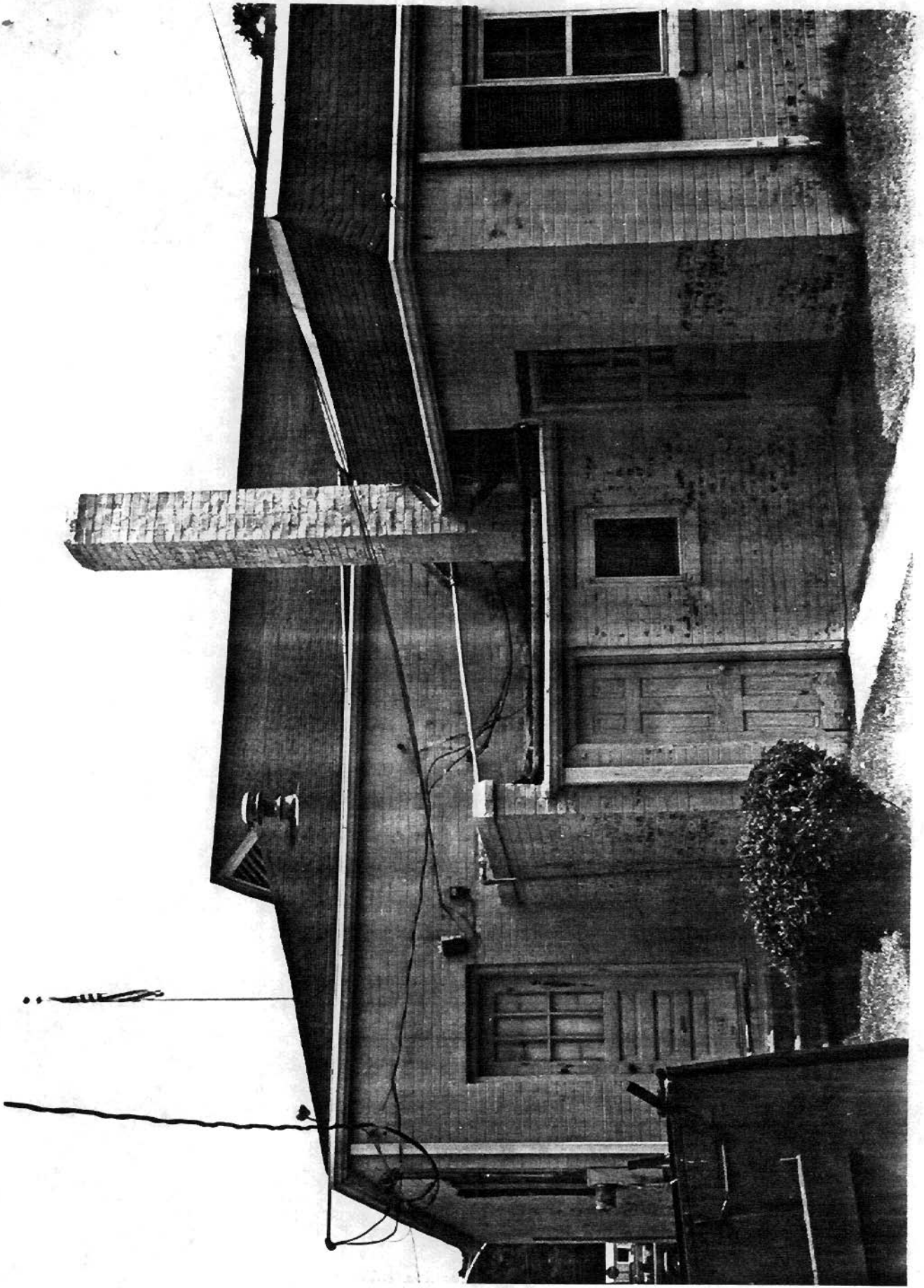
name/title Kenneth Story, Architectural Historian date February 7, 1990
 organization Arkansas Historic Preservation Program telephone (501) 371-2763
 street & number 225 E. Markham St., Suite 200 city or town Little Rock state Arkansas zip code 72201

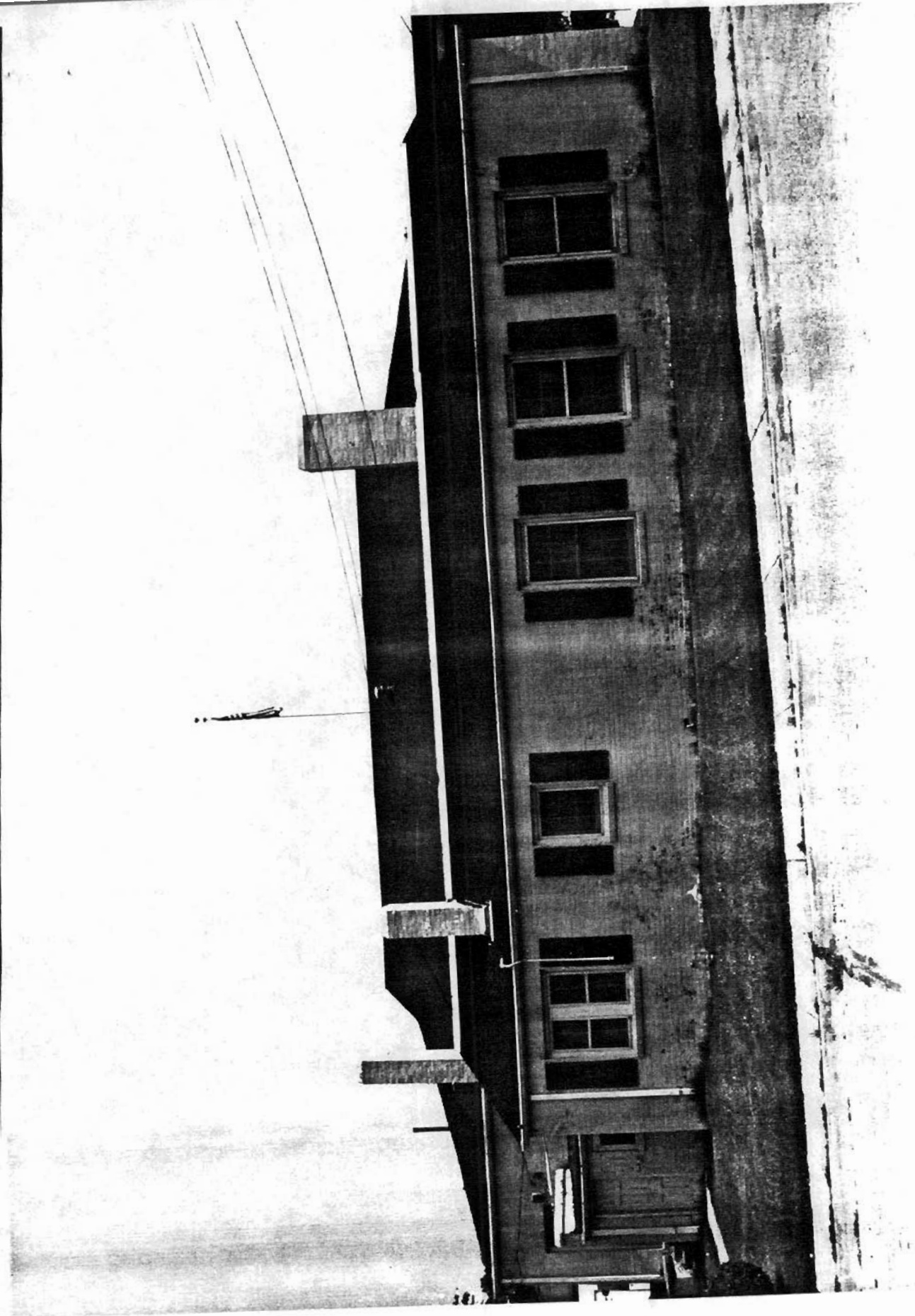


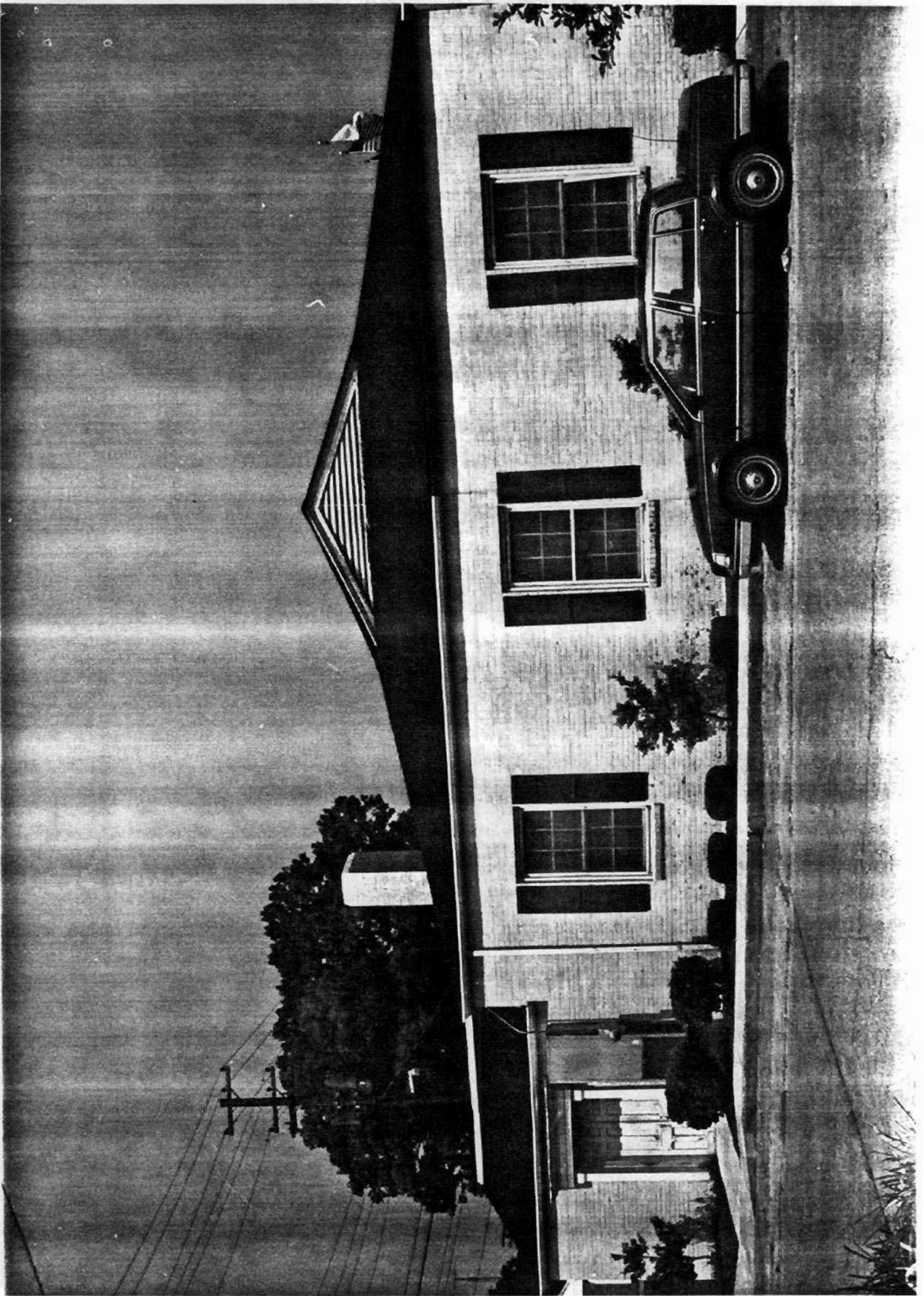


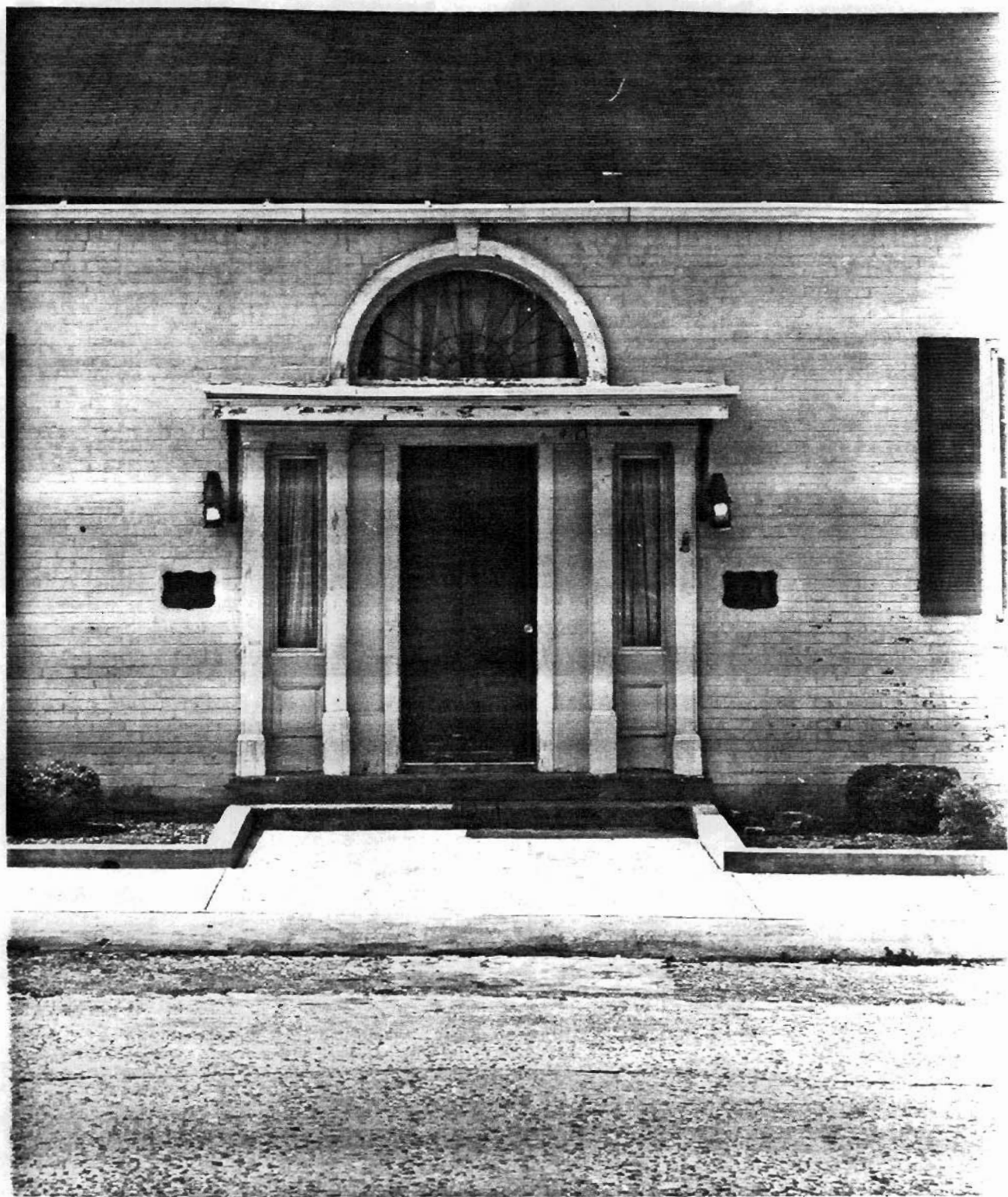


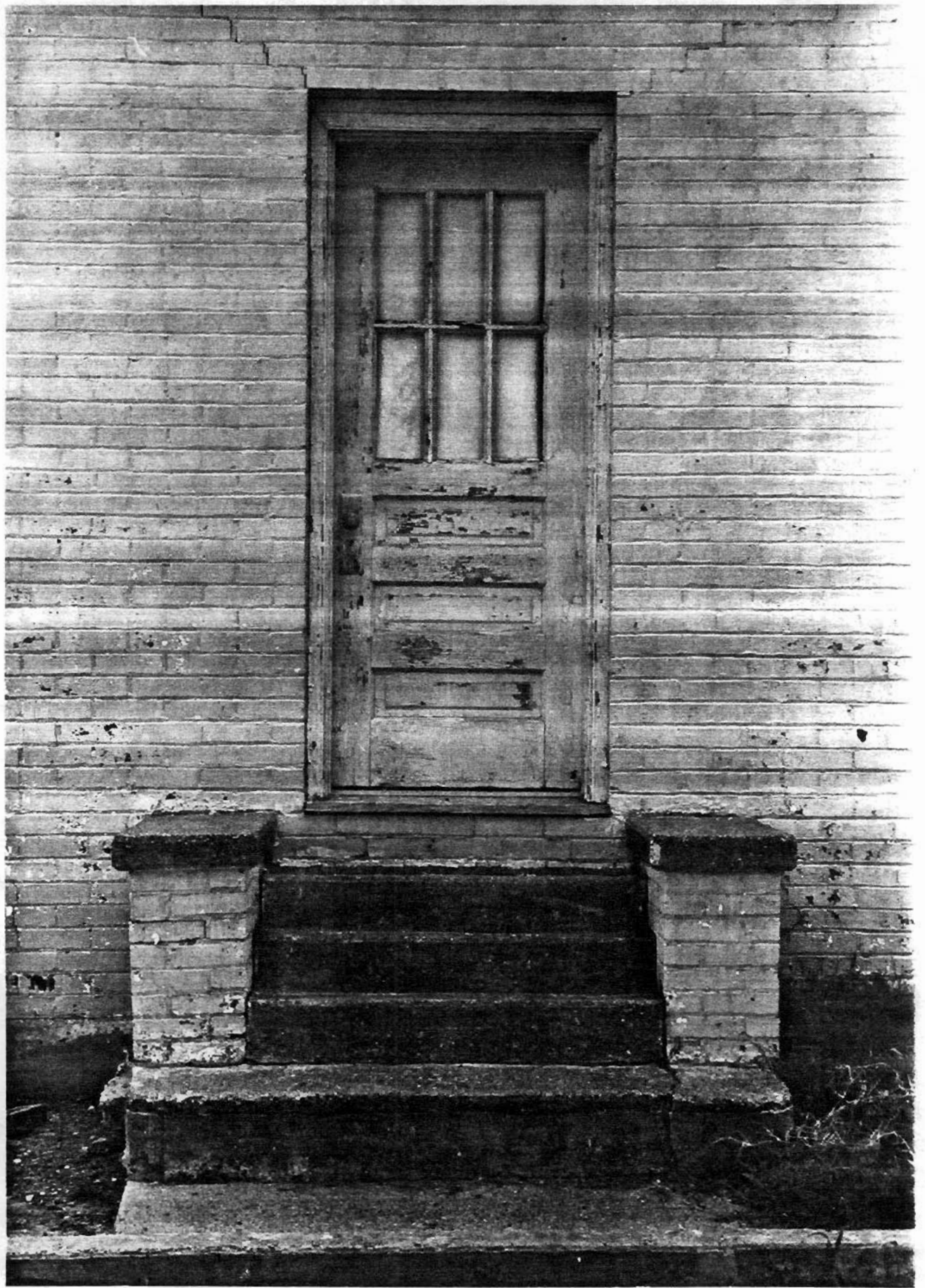


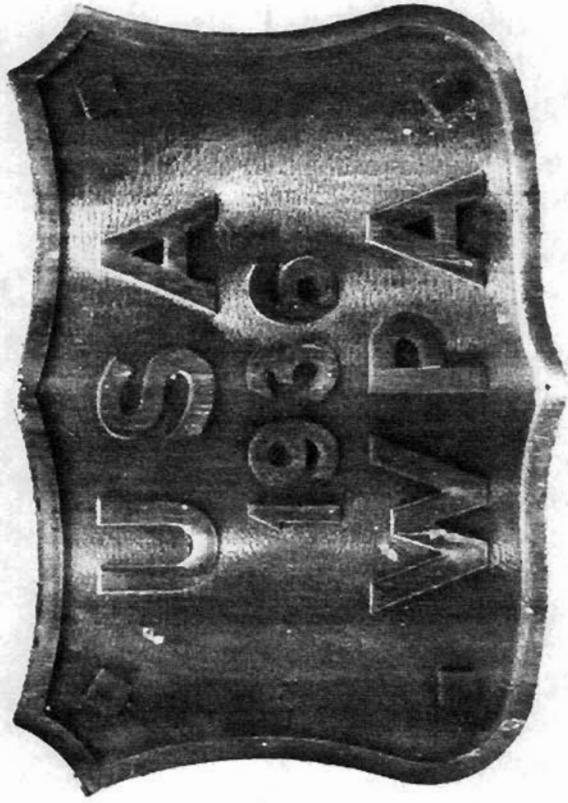


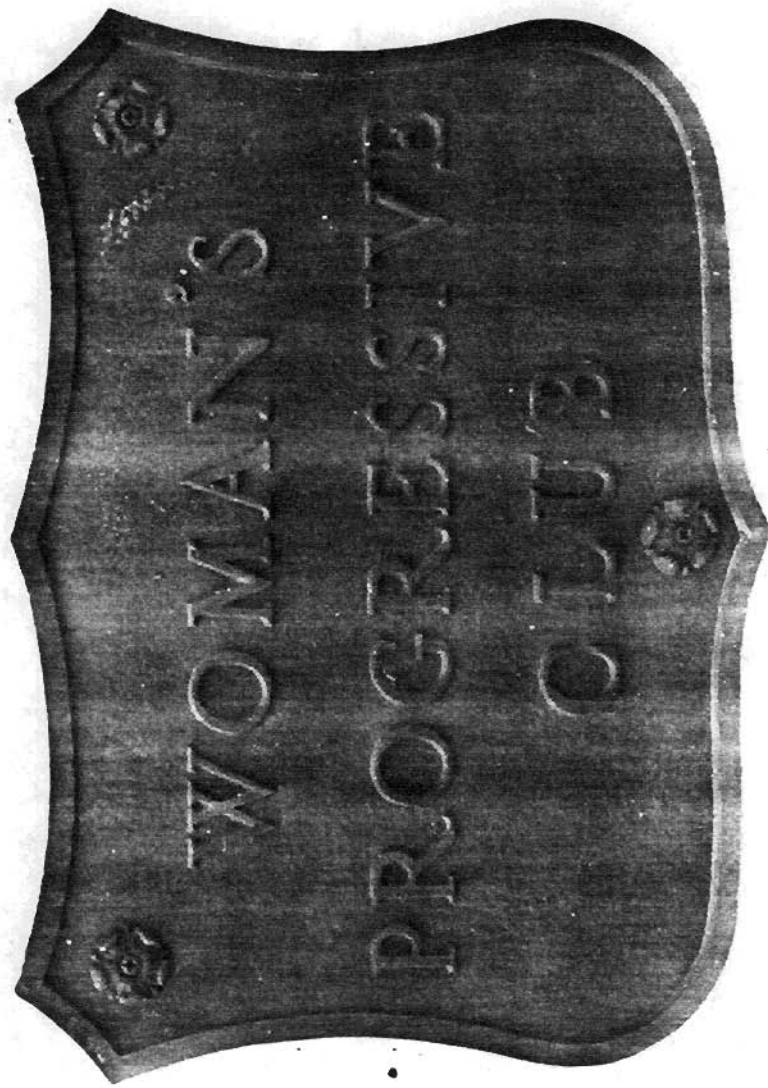












WOMAN'S

PROGRESSIVE

CLUB

