

United States Department of the Interior  
National Park Service

National Register of Historic Places  
Registration Form

NR 1/24/08

This form is for use in nominating or requesting determinations for individual properties and districts. See instructions in *How to Complete the National Register of Historic Places Registration Form* (National Register Bulletin 16A). Complete each item by marking "x" in the appropriate box or by entering the information requested. If an item does not apply to the property being documented, enter "N/A" for "not applicable." For functions, architectural classification, materials, and areas of significance, enter only categories and subcategories from the instructions. Place additional entries and narrative items on continuation sheets (NPS Form 10-900a). Use a typewriter, word processor, or computer, to complete all items.

1. Name of Property

historic name U.S. 62 White River Bridge  
other names/site number Site #CR1072, Bridge #02597

2. Location

street & number U.S. 62, approximately 1/4 mile south of County Road 212  not for publication  
city or town Eureka Springs  vicinity  
state Arkansas code AR county Carroll code 015 zip code 72631

3. State/Federal Agency Certification

As the designated authority under the National Historic Preservation Act, as amended, I hereby certify that this  nomination   
request for determination of eligibility meets the documentation standards for registering properties in the National Register of Historic  
Places and meets the procedural and professional requirements set for in 36 CFR Part 60. In my opinion, the property  meets   
does not meet the National Register criteria. I recommend that this property be considered significant  
 nationally  statewide  locally. (See continuation sheet for additional comments.)

Cedric Matthews 10/31/07  
Signature of certifying official/Title Date  
Arkansas Historic Preservation Program  
State or Federal agency and bureau

In my opinion, the property  meets  does not meet the National Register criteria. ( See Continuation sheet for additional comments.)

\_\_\_\_\_  
Signature of certifying official/Title Date  
\_\_\_\_\_  
State or Federal agency and bureau

4. National Park Service Certification

I hereby certify that the property is:

<input type="checkbox"/> entered in the National Register <input type="checkbox"/> See continuation sheet	_____ Signature of the Keeper	_____ Date of Action
<input type="checkbox"/> determined eligible for the National Register. <input type="checkbox"/> See continuation sheet	_____	_____
<input type="checkbox"/> determined not eligible for the National Register.	_____	_____
<input type="checkbox"/> removed from the National Register.	_____	_____
<input type="checkbox"/> other, (explain): _____	_____	_____

U.S. 62 White River Bridge  
Name of Property

Carroll County, Arkansas  
County and State

**5. Classification**

**Ownership of Property**  
(Check as many boxes as apply)

- private
- public-local
- public-State
- public-Federal

**Category of Property**  
(Check only one box)

- building(s)
- district
- site
- structure
- object

**Number of Resources within Property**  
(Do not include previously listed resources in count.)

Contributing	Noncontributing	
0	0	buildings
0	0	sites
1	0	structures
0	0	objects
1	0	Total

**Name of related multiple property listing**  
(Enter "N/A" if property is not part of a multiple property listing.)

Historic Bridges of Arkansas

**Number of Contributing resources previously listed in the National Register**

N/A

**6. Function or Use**

**Historic Functions**  
(Enter categories from instructions)

Transportation: Road-related (vehicular)  
\_\_\_\_\_  
\_\_\_\_\_  
\_\_\_\_\_  
\_\_\_\_\_  
\_\_\_\_\_  
\_\_\_\_\_

**Current Functions**  
(Enter categories from instructions)

Transportation: Road-related (vehicular)  
\_\_\_\_\_  
\_\_\_\_\_  
\_\_\_\_\_  
\_\_\_\_\_  
\_\_\_\_\_  
\_\_\_\_\_

**7. Description**

**Architectural Classification**  
(Enter categories from instructions)

Other: Deck truss bridge  
\_\_\_\_\_  
\_\_\_\_\_

**Materials**  
(Enter categories from instructions)

foundation Concrete  
walls N/A  
roof N/A  
other Steel  
\_\_\_\_\_

**Narrative Description**

(Describe the historic and current condition of the property on one or more continuation sheets.)

SEE CONTINUATION SHEET

8. Statement of Significance

Applicable National Register Criteria

(Mark "x" in one or more boxes for the criteria qualifying the property for National Register listing.)

- Criteria A, B, C, D with checkboxes and descriptions.

Criteria Considerations

(Mark "x" in all the boxes that apply.)

Property is:

- Criteria A through G with checkboxes and descriptions.

Narrative Statement of Significance

(Explain the significance of the property on one or more continuation sheets.)

9. Major Bibliographical References

Bibliography

(Cite the books, articles, and other sources used in preparing this form on one or more continuation sheets.)

Previous documentation on file (NPS):

- Documentation checkboxes: preliminary determination, previously listed, landmark, etc.

Levels of Significance (local, state, national)

Local

Areas of Significance (Enter categories from instructions)

Engineering
Transportation

Period of Significance

1950-1958

Significant Dates

1950-1958

Significant Person (Complete if Criterion B is marked)

Cultural Affiliation (Complete if Criterion D is marked)

Architect/Builder

BUILDER: Forcum-James Company of Dyersburg, Tennessee

Primary location of additional data:

- Location checkboxes: State Historic Preservation Office, Other State Agency, Federal Agency, etc.

Name of repository: Arkansas State Highway and Transportation Department

U.S. 62 White River Bridge  
Name of Property

Carroll County, Arkansas  
County and State

**10. Geographical Data**

**Acree of Property** Less than one acre

**UTM References**

(Place additional UTM references on a continuation sheet.)

1 15 426225 4034109  
Zone Easting Northing  
2 \_\_\_\_\_

3 \_\_\_\_\_  
Zone Easting Northing  
4 \_\_\_\_\_

See continuation sheet

**Verbal Boundary Description**

(Describe the boundaries of the property on a continuation sheet.)

**Boundary Justification**

(Explain why the boundaries were selected on a continuation sheet.)

**11. Form Prepared By**

name/title Ralph S. Wilcox, National Register & Survey Coordinator & Sydney Yeager, National Register/Survey Intern  
organization Arkansas Historic Preservation Program date January 22, 2007  
street & number 1500 Tower Building, 323 Center Street telephone (501) 324-9787  
city or town Little Rock state Arkansas zip code 72201

**Additional Documentation**

Submit the following items with the completed form

**Continuation Sheets**

**Maps**

A USGS map (7.5 or 15 minute series) indicating the property's location

A Sketch map for historic districts and properties having large acreage or numerous resources.

**Photographs**

Representative black and white photographs of the property.

**Additional items**

(Check with the SHPO or FPO for any additional items.)

**Property Owner**

(Complete this item at the request of SHPO or FPO.)

name Arkansas Highway and Transportation Department  
street & number P.O. Box 2261 telephone 501-569-2000  
city or town Little Rock state Arkansas zip code 72203

**Paperwork Reduction Act Statement:** This information is being collected for applications to the National Register of Historic Places to nominate properties for listing or determine eligibility for listing, to list properties, and to amend existing listing. Response to this request is required to obtain a benefit in accordance with the National Historic Preservation Act, as amended (16 U.S.C. 470 *et seq.*)

**Estimated Burden Statement:** Public reporting burden for this form is estimated to average 18.1 hours per response including time for reviewing instructions, gathering and maintaining data, and completing and reviewing the form. Direct comments regarding this burden estimate or any aspect of this form to the Chief, Administrative Services Division, National Park Service, P. O. Box 37127, Washington, DC 20013-7127; and the Office of Management and Budget, Paperwork Reduction Projects (1024-0018), Washington, DC 20303

United States Department of the Interior  
National Park Service

## National Register of Historic Places Continuation Sheet

Section number 7 Page 1

### Summary

The U.S. 62 White River Bridge is located at the crossing of the White River, on U.S. 62 about 9 miles northwest of Eureka Springs. Comprised of five spans measuring 128 feet long each and 30.6 feet wide, this steel, deck-truss bridge spans a total of 787 feet. The bridge was built by the Forcum-James Company of Dyersburg, Tennessee.

### Elaboration

The steel, deck-truss bridge is accessed from both the northeast and southwest ends by U.S. 62. Because it is a deck truss, this bridge carries its traffic load level with the top chords. The section of the bridge supported by deck truss consists of 5 main spans, with a total structure length of 787 feet. The deck surface is concrete laid over the steel truss. The bridge supports are reinforced concrete.

The truss is divided into five spans. The bridge consists of vertical deck trusses each spanning 128 feet. Both sides of the bridge have vertical A-shaped trusses separated by vertical members. The side trusses are connected to each other with straight horizontals under the deck and are further connected by crossed diagonals. The bridge is also made up of four I-beam spans which make up the rest of the superstructure.<sup>1</sup>

### Integrity

No structural alterations have been made to the bridge to alter its integrity. Its location and setting remains rural and it exemplifies its original historic design and materials. No changes have been made to alter the historic workmanship or detract from its feeling or association as it is still used as a bridge for vehicular travel and is in excellent condition.

<sup>1</sup> Bridge Record No. 2597. Busch Relocation White River Bridge. 1953.

United States Department of the Interior  
National Park Service

## National Register of Historic Places Continuation Sheet

Section number 8 Page 1

### Summary

Constructed in 1950-1952, the U.S. 62 Bridge over the White River is being nominated to the National Register of Historic Places with local significance under **Criterion C** because it embodies the distinctive characteristics of a deck truss bridge and is the best example of this design in the surrounding area. In addition to its engineering importance, the White River Bridge is also being nominated for **Criterion A** for its associations with the development of transportation in Carroll County during the mid-twentieth century. This bridge is significant in the areas of engineering and transportation. It is being submitted under the multiple property listing "Historic Bridges of Arkansas" and under the associated historic context "Post WW II Era."

### Elaboration

The White River is the largest tributary river of the Mississippi between the Missouri and Arkansas Rivers. The extreme northwest part of Arkansas was initially accessible by a road from St. Louis that went straight through Carroll County. This encouraged settlement, most of which occurred along the White River. The first white settler came and settled in the central part of the county. Later settlers from Tennessee moved into the northwestern part of the county which is where the White River Bridge is located on what is now U.S. 62.<sup>1</sup>

Eureka Springs was founded in 1879 and before the close of the year boasted 10,000 people.<sup>2</sup> Visitors were drawn to Eureka Springs for the "healing" powers of its water. Being a tourist destination, Eureka Springs needed roads built to connect it to the surrounding cities. Also, as settlement in the area increased in the late nineteenth and twentieth centuries, a larger road network developed in the county. With Eureka Spring's importance as the westernmost of the two county seats in Carroll County, accessibility to the community, especially from the county's western residents was important. In addition, as automobile and truck travel increased throughout the first part of the twentieth century, the need for a new sturdy bridge to allow U.S. 62 to pass over the White River on the way to Eureka Springs became a necessity.

The U.S. 62 Bridge over the White River was built by the Forcum-James Company of Dyersburg, Tennessee<sup>3</sup> by order of the Arkansas State Highway Commission and the Department of Commerce Bureau of Public Roads. Construction began on October 16, 1950, at which time the estimated cost was \$277,196.00. The bridge was completed two years later at the cost of \$305,519.90. The bridge was completed in 1952 and still serves as a functional bridge to this day. In total, there were eleven deck truss bridges built in Arkansas with the U.S. 62 White River Bridge being the last one built.<sup>4</sup>

<sup>1</sup> *The Goodspeed Biographical and Historical Memoirs of Northwestern Arkansas: Benton, Washington, Carroll, Madison, Crawford, Franklin, and Sebastian Counties.* Chicago: The Goodspeed Publishing Co., 1889.

<sup>2</sup> "History of Eureka Springs, Arkansas." <<http://www.eurekasprings.com/history/>> (March 12, 2007).

<sup>3</sup> Scoggins, Robert. Email to Sydney Yeager Intern of the Arkansas Historic Preservation Registry. February 2, 2007.

<sup>4</sup> Scoggins, Robert. Email to Sydney Yeager Intern of the Arkansas Historic Preservation Registry. February 2, 2007.

United States Department of the Interior  
National Park Service

## National Register of Historic Places Continuation Sheet

Section number 8 Page 2

The bridge was built near the community of Busch, a community founded in 1905 that was originally to be named Walden.<sup>5</sup>

Since the time that the White River Bridge was completed by the Focum James Company of Dyersburg, Tennessee, in 1952, it has remained an important transportation link in Carroll County. Today, U.S. 62 is the main east-west highway in Carroll County connecting the county to the Rogers and Bentonville area in northwest Arkansas. As the only deck-truss bridge in Carroll County and an important transportation link in the area, the U.S. 62 White River Bridge represents an important part of Carroll County's history.

### Statement of Significance

Constructed in 1950-1952, the U.S. 62 Bridge over the White River is being nominated to the National Register of Historic Places with local significance under **Criterion C** because it embodies the distinctive characteristics of a deck truss bridge and is the best example of this design in the surrounding area. In addition to its engineering importance, the White River Bridge is also being nominated for **Criterion A** for its associations with the development of transportation in Carroll County during the mid-twentieth century. This bridge is significant in the area of engineering and is being submitted under the multiple property listing "Historic Bridges of Arkansas" and under the associated historic context "Post WW II Era."

<sup>5</sup> Baker, Russell Pierce. *From Memdag to Norsk: A Historical Directory of Arkansas Post Offices 1832-1971*. Hot Springs, Arkansas: Arkansas Genealogical Society, 1988.

United States Department of the Interior  
National Park Service

## National Register of Historic Places Continuation Sheet

Section number   9   Page   1  

---

### Bibliography

- Baker, Russell Pierce. *From Memdag to Norsk: A Historical Directory of Arkansas Post Offices 1832-1971*. Hot Springs, Arkansas: Arkansas Genealogical Society, 1988.
- Baughn, James. *Historic Bridges of the US: White River Bridge US 62 Carroll County, Arkansas*. (2002) <<http://bridgehunter.com/ar/carroll/white-62/>> (March 12, 2007).
- Bridge Record No. 2597. Busch Relocation White River Bridge. 1953.
- The Goodspeed Biographical and Historical Memoirs of Northwestern Arkansas: Benton, Washington, Carroll, Madison, Crawford, Franklin, and Sebastian Counties*. Chicago: The Goodspeed Publishing Co., 1889.
- "History of Eureka Springs, Arkansas." (2007) <<http://www.eukasprings.com/history/>> (March 12, 2007).
- Scoggin, Robert. Email to Sydney Yeager Intern of the Arkansas Historic Preservation Program, February 2, 2007.



United States Department of the Interior  
National Park Service

## National Register of Historic Places Continuation Sheet

Section number 10 Page 1

---

### Verbal Boundary Description

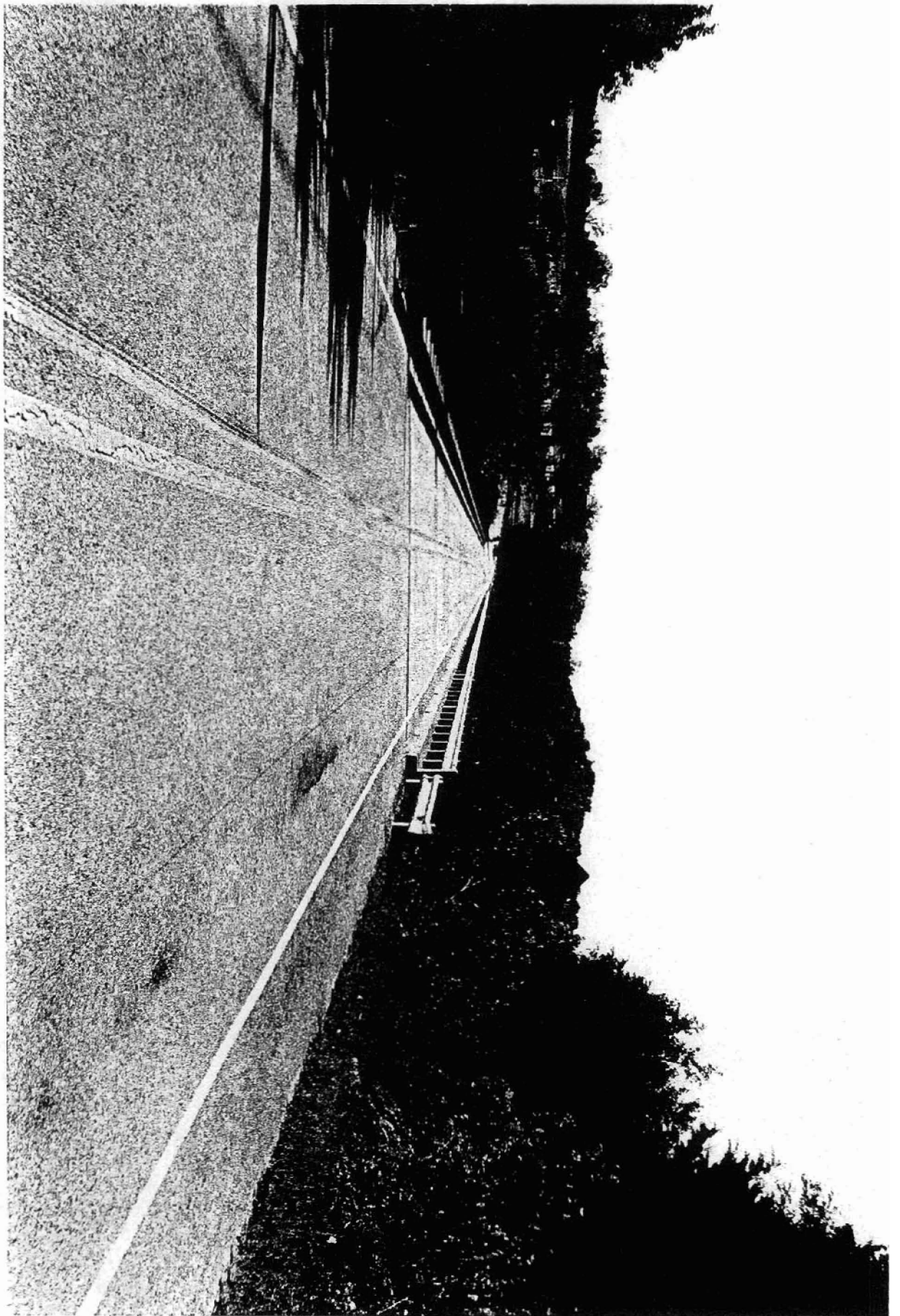
Section - 35, Township - 21N, Range - 27W

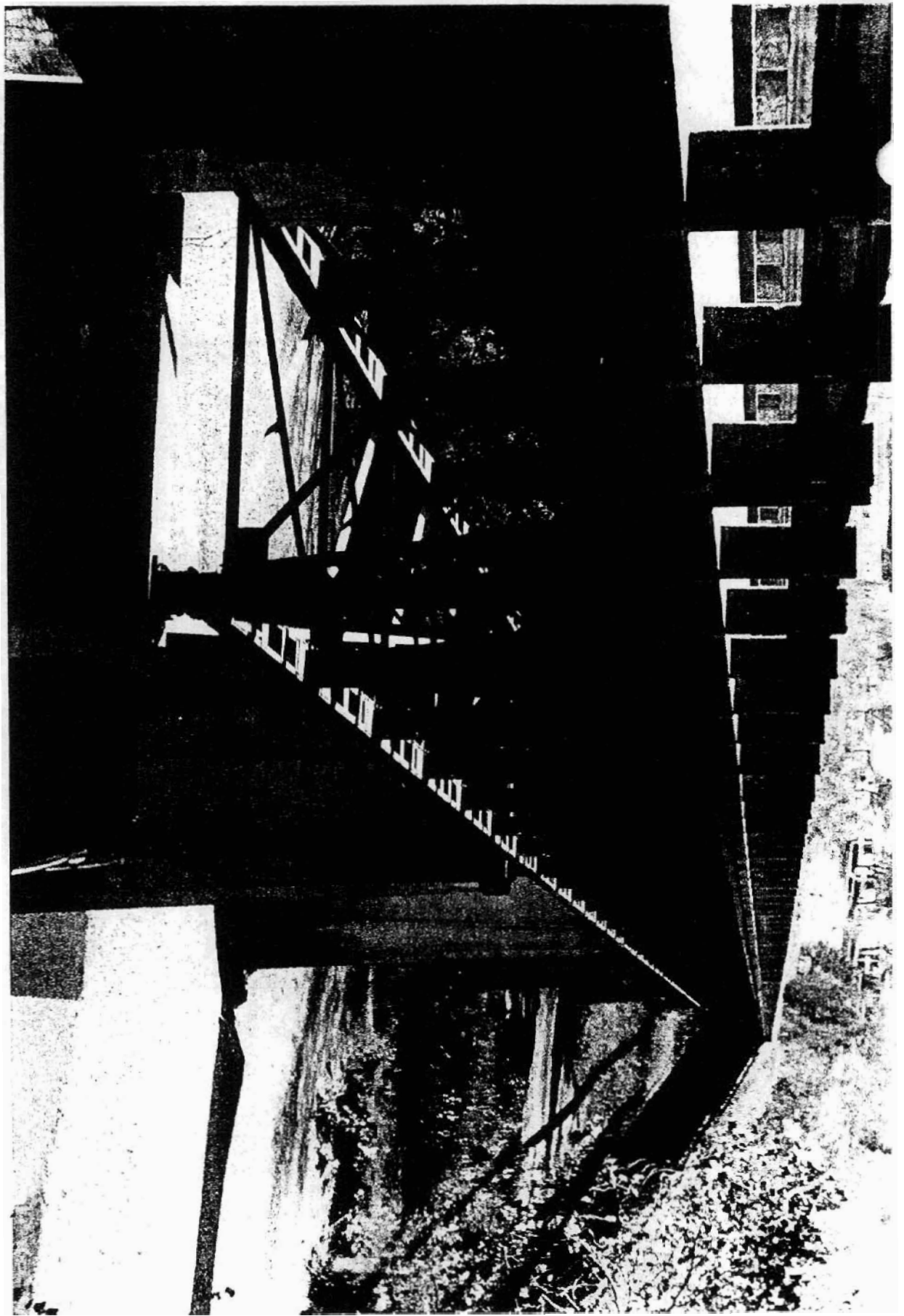
Beginning at a point 30 feet northeast of the northeast corner of the bridge, proceed northwest 40 feet crossing U.S. 62. Turning southwest, proceed 800 feet, running parallel to the northwest side of the bridge, while crossing the White River. Turning southeast proceed 40 feet crossing U.S. 62. Turning northeast proceed 800 feet, running parallel to the southeast side of the bridge, while crossing the White River and returning to the point of origin.

### Boundary Justification

The boundary includes the White River Bridge on U.S. 62 and its immediate setting.

WHITE SHEEP  
FOREMAN - JAMES CO.  
MOUNTAIN VIEW, CO.  
SHEEP RANGING  
CAMP, CO.  
SHEEP RANGING  
CAMP, CO.  
SHEEP RANGING  
CAMP, CO.





Page 12  
11773

7514 2 1

7256 IV NW  
(GARFIELD)

T. 21 N.

T. 20 N.

4934

4933

4932

257

4931

4930

