

United States Department of the Interior
National Park Service

NR LISTED

AUG 14 1998

NATIONAL REGISTER OF HISTORIC PLACES
REGISTRATION FORM

AHPP

=====

1. Name of Property

=====

Historic Name: Berryville Post Office

Other Name/Site Number: CR0989

=====

2. Location

=====

Street & Number: 101 East Madison Avenue

Not for Publication: NA

City/Town: Berryville

Vicinity: NA

State: AR County: Carroll Code: 015 Zip Code: 72616

=====

3. Classification

=====

Ownership of Property: Public-Federal

Category of Property: Building

Berryville Post Office

Carroll County, Arkansas

Name of Property

County and State

Number of Resources within Property:

Contributing	Noncontributing	
<u> 1 </u>	<u> </u>	buildings
<u> </u>	<u> </u>	sites
<u> </u>	<u> </u>	structures
<u> </u>	<u> </u>	objects
<u> 1 </u>	<u> 0 </u>	Total

Number of contributing resources previously listed in the National Register: 0

Name of related multiple property listing: Arkansas Post Offices with Section Art

=====

4. State/Federal Agency Certification

=====

As the designated authority under the National Historic Preservation Act of 1986, as amended, I hereby certify that this X nomination request for determination of eligibility meets the documentation standards for registering properties in the National Register of Historic Places and meets the procedural and professional requirements set forth in 36 CFR Part 60. In my opinion, the property X meets does not meet the National Register Criteria. See continuation sheet.

Signature of certifying official

Date

State or Federal agency and bureau

Berryville Post Office

Name of Property

Carroll County, Arkansas

County and State

In my opinion, the property x meets does not meet the National Register criteria. See continuation sheet.

Cathryn A Slater

3-2-98

Signature of commenting or other official

Date

Arkansas Historic Preservation Program

State or Federal agency and bureau

=====
5. National Park Service Certification
=====

I, hereby certify that this property is:

 entered in the National Register

 See continuation sheet.

 determined eligible for the

National Register

 See continuation sheet.

 determined not eligible for the

National Register

 removed from the National Register

 other (explain): _____

Signature of Keeper

Date
of Action

=====
6. Function or Use
=====

Historic: GOVERNMENT

Sub: Post Office

Current : GOVERNMENT

Sub: Post Office

Berryville Post Office
Name of Property

Carroll County, Arkansas
County and State

=====
7. Description
=====

Architectural Classification:

Colonial Revival

Materials: foundation Concrete roof metal
walls Brick other _____

Describe present and historic physical appearance:

SUMMARY

The Berryville Post Office is a one-story, brick masonry structure designed in the Colonial Revival style of architecture and featuring a full basement. The building is designed in an essentially rectangular plan with a small projecting rear loading dock. The entire structure is surrounded with a stone cornice and a raised concrete foundation course. The northern portion of the building is topped with a hipped roof; at its center is a cupola topped by a bell-cast pyramid roof with a finial at its apex. The cupola is not fenestrated. The rear section of the building is topped by a flat roof and the loading dock features a shed roof. A 1969 addition to the rear of the building is not visible from the principal facade and does not detract from the building's historic integrity.

ELABORATION

The Berryville Post Office is a one-story, brick masonry structure designed in the Colonial Revival style of architecture and featuring a full basement. The building is designed in an essentially rectangular plan with a small projecting rear loading dock. The entire structure is surrounded with a stone cornice and a raised concrete foundation course. The northern portion of the building is topped with a hipped roof; at its center is a cupola topped by a bell-cast pyramid roof with a finial at its apex. The cupola is not fenestrated. The rear section of the building is topped by a flat roof and

Berryville Post Office
Name of Property

Carroll County, Arkansas
County and State

the loading dock features a shed roof. A 1969 addition to the rear of the building is not visible from the principal facade and does not detract from the building's historic integrity.

The bulk of the Colonial Revival ornamentation is on the front, or northern, facade of the building. This facade centers around an aluminum-framed door surrounded by a wooden frame featuring flanking wood half-columns and topped by a pediment with a raised cornice detail at the top and with a centrally inset eagle figure. A small metal-and-glass gable roof projects from the door arrangement, protecting the stoop; this 1995-96 addition is unobtrusive and does not detract from the building's historic integrity. The door arrangement is flanked on both sides by a projecting brick pilaster with inset metal medallions. These are flanked by 8-over-8, double-hung windows, another brick pilaster, and another 8-over-8, double-hung window. A handicap-accessibility ramp extends from the eastern side of the stoop and a recessed area below the western pair of windows offers fenestration for the basement area. The cornerstone is located on the extreme northeast corner of the building. It reads: HENRY MORGENTHAU, JR., SECRETARY OF THE TREASURY/JAMES A. FARLEY, POSTMASTER GENERAL/LOUIS A. SIMON, SUPERVISING ARCHITECT/NEAL A. MELICK, SUPERVISING ENGINEER/1938.

Continuing around the western facade, from north to south, the building is fenestrated with five 8-over-eight, double-hung windows, the northernmost two of which are flanked by projecting brick pilasters. The northern end of the building features a staircase leading to the basement. The recessed area is fenestrated with two 8-over-8, double-hung windows, a door to the south of them, and an additional 8-over-8, double-hung windows. The addition area terminates in a two-brick thick, stand-alone wall with a rollaway door.

The rear, or south facade, continuing eastward from the stand-alone wall, features a pair of swinging doors offering access to the concrete loading dock and an additional door fenestrated with a four-pane stationary window. A ramp projects from the eastern end of the dock immediately next to the wall.

The east facade, from south to north, features a multi-pane window behind a metal grill, the two-story brick chimney, an 8-over-8, double-hung window, a small window with three stacked panes, a brick pilaster, a blank brick area, another brick pilaster fenestrated by another small window with three stacked panes, and a final 8-over-8, double-hung window. Stairs provide access to a basement door at the southernmost part of this facade.

Berryville Post Office
Name of Property

Carroll County, Arkansas
County and State

Noteworthy interior details include the original wooden vestibule, marble wainscoting, original post office boxes and original counters, doors and memo cabinets. The most prominent interior feature is a three-piece plaster sculpture titled "Man and Woman, Arkansas" by artist Daniel Olney.

The Berryville Post Office is in very good condition and retains most of its historic fabric. The few non-historic alterations are unobtrusive and do not detract from the structure's historic integrity.

=====
8. Statement of Significance
=====

Certifying official has considered the significance of this property in relation to other properties: Statewide.

Applicable National Register Criteria: A

Criteria Considerations (Exceptions): NA

Areas of Significance: Politics/Government

Period(s) of Significance: 1938-40

Significant Dates: 1938-40

Significant Person(s): NA

Cultural Affiliation: NA

Architect/Builder: Louis A. Simon, Supervising Architect
Linebarger and Fraser, Camden, AR -
builders

Berryville Post Office
Name of Property

Carroll County, Arkansas
County and State

State significance of property, and justify criteria, criteria considerations, and areas and periods of significance noted above:

SUMMARY

The Berryville Post Office is associated with the historic context Arkansas Post Offices with Section Art as a U.S. Postal Service structure containing a sculpture financed through the U.S. Treasury Department's Section on Fine Arts. As such, it is eligible under Criterion A with statewide significance for its associations with the Section's efforts to employ Depression-era artists and place art in post offices around the country.

ELABORATION

In late 1937, Congress authorized \$70 million for public works projects over a three-year period. The majority of those were post offices, and among four in Arkansas was a new post office for Berryville in mountainous Carroll County. The building was designed in 1938 and erected in 1938-9 by Linbarger and Fraser, Contractors, of Camden, Arkansas. Louis A. Simon was the supervising architect for the project, Neal A. Melick was supervising engineer, W.G. Noll was superintendent of architecture, and J.A. Ackerman was construction engineer.

The new Berryville Post Office opened for business on August 31, 1939, leaving its previous location on the west side of the town square for the spacious new facility on East Madison Avenue. The structure's four basement rooms were occupied by County Agent C.F. Lund, Home Demonstration Agent Carrie P. Taylor, and Administrative Assistant Roy Keeling. A formal dedication was held on September 2, 1939, with Congressman Clyde T. Ellis as the chief speaker.

A total of \$750 was allotted for a mural for the new post office, and on May 31, 1939, the Section of Fine Arts requested and received permission to change the art from mural to sculpture. Inslee A. Hopper, consultant to the Section chief, invited artist Daniel Olney on June 7, 1939, to submit designs for the sculpture. "In sculpture projects of this type, we have found that the most successful solution has been arrived at by the sculptors who have considered the end wall of the lobby as an architectural unit and have designed their sculpture as an accent related to both the wall space and the architectural elements," Hopper wrote. "In the opinion of the Section the dimensions of the relief are not as important as the suitability of the form

of the sculpture in relation to the space to be decorated."

Olney accepted the commission on June 19, writing: "I think some scene from the Arkansas life, or a family group surrounded by the implements of that life, possibly tied up somehow in connection with the mails would be appropriate. My experience living in that extraordinary country will be a help."

Olney was born in New York City in 1909 and studied sculpture under Gutzon Borglum. He also studied at the Beaux Arts Institute of Design, the Arts Students League, and the Bavarian Art Trade School. Olney received an honorable mention in the Section's 50 States Competition before receiving the Berryville commission.

A formal contract dated September 1, 1939, gave Olney 252 days to complete a three-part plaster sculpture for the space above the postmaster's door. One relief was to be 3'4" high and 2'3" wide, another 3'4" high by 2' wide, and a third 2' wide by 2' high, covering a total of 19 square feet. Olney's preliminary design was accepted on February 2, 1940, and the Section authorized his first payment of \$150.

Among the correspondence in the National Archives are a number of letters regarding installation of the 250-pounds of plaster sculpture. Olney provided detailed cross-section drawings showing how a 3/16" galvanized toggle attached to a brass anchor, brass strap and galvanized iron pipe within the sculptures would affix the heavy pieces to the tile and plaster walls of the post office. Hopper, in a March 19, 1940, letter, recommended that Olney himself install the two flanking elements of the sculpture and arrange with a local contractor for installation of the third. The Section approved Olney's method, provided two anchors were provided for each relief. Olney's second payment of \$250 was approved on March 27.

Olney visited Berryville in late March, and wrote Ed Rowan of the Section on April 9, 1940, regarding the visit. The artist noted that the lighting was fine in the building, but a clock would have to be moved to permit the installation. (This last item precipitated a flurry of memos, all preserved in the National Archives, that resulted in the Berryville Post Office custodian moving the clock from one wall to another.) "I know it will please you to hear that the people I met there seemed to grasp the idea of the sculpture at once, liked it, and liked the idea of having art in their post office," Olney noted in his letter to Rowan.

Berryville Post Office

Name of Property

Carroll County, Arkansas

County and State

The sculpture was installed in May, and Olney's final payment of \$350 was approved on May 27. The Section apparently was pleased with Olney's work, since Rowan later provided a letter of support to assist the artist in landing a job with the New York City school system. The Section also selected Olney to provide a sculpture for the Marion, Virginia, Post Office.

=====
9. Major Bibliographical References
=====

Arkansas Gazette, September 10, 1937.

Historic Significance Survey, U.S. Postal Service. July 10, 1980.

"Berryville Gets a New Post Office Building," undated article by Carroll County Historical Society.

U.S. Treasury Department's Fine Arts Section materials, National Archives. Previous documentation on file (NPS):

- preliminary determination of individual listing (36 CFR 67) has been requested.
- previously listed in the National Register
- previously determined eligible by the National Register
- designated a National Historic Landmark
- recorded by Historic American Buildings Survey # _____
- recorded by Historic American Engineering Record # _____

Primary Location of Additional Data:

- x State historic preservation office
- Other state agency
- Federal agency
- Local government
- University
- Other -- Specify Repository: _____

Berryville Post Office
Name of Property

Carroll County, Arkansas
County and State

=====
10. Geographical Data
=====

Acreage of Property: Less than one

UTM References: Zone Easting Northing Zone Easting Northing

 A 15 449260 4024320 B
 C D

Verbal Boundary Description:

Beginning at a point formed by the intersection of the southern edge of East Madison Avenue with a perpendicular line running parallel with the building's western elevation and located approximately 50 feet to the west thereof, proceed southerly along said line for approximately 200 feet; thence proceed easterly along a perpendicular line for approximately 200 feet; thence proceed northerly along a perpendicular line for approximately 200 feet to its intersection with the southern edge of East Madison Avenue; thence proceed westerly along said edge to the point of beginning.

Boundary Justification:

This boundary contains all property historically associated with this resource that retains its integrity.

=====
11. Form Prepared By
=====

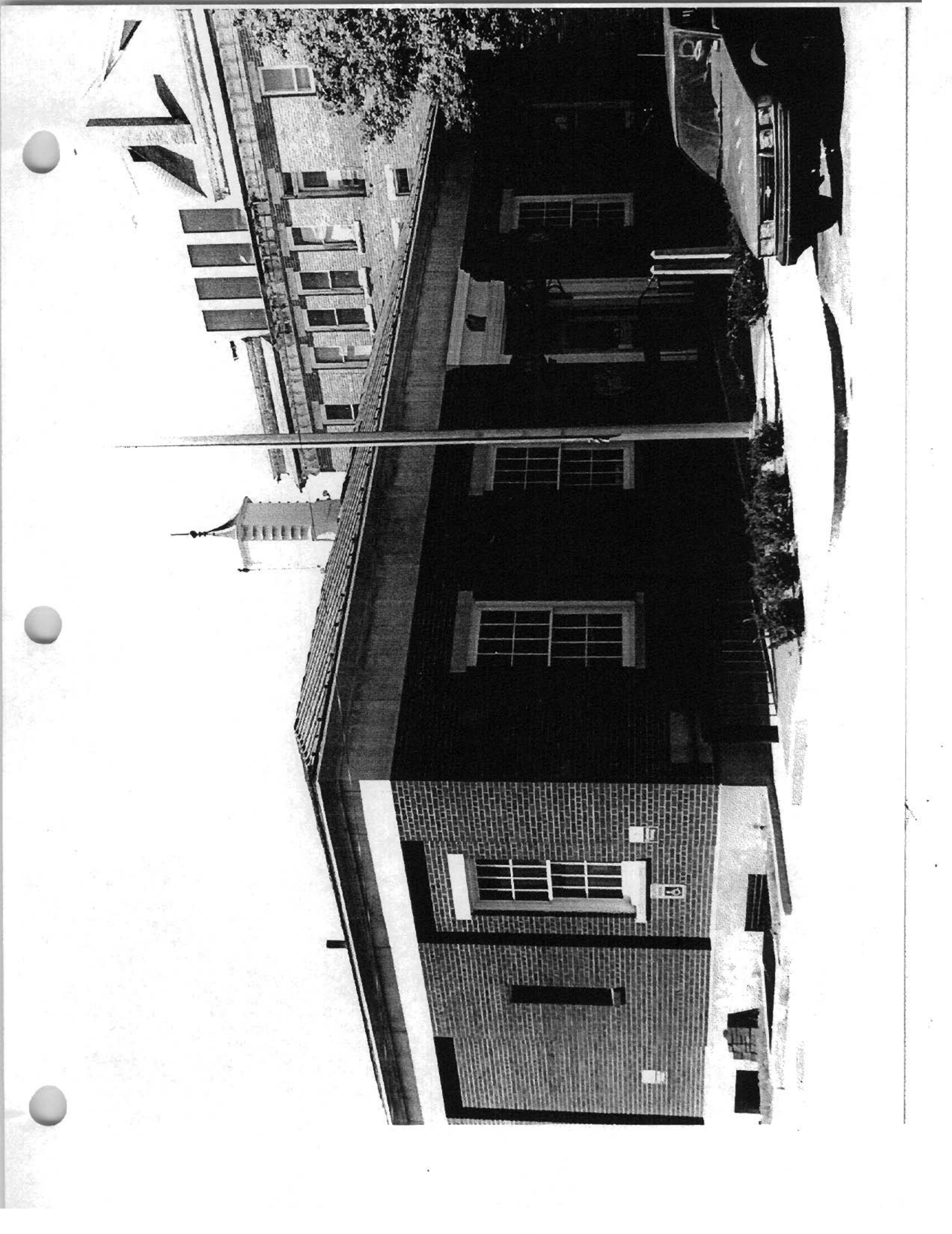
Name/Title: Mark Christ/Community Outreach Director

Organization: Arkansas Historic Preservation Program Date: 12-18-97

Street & Number: 1500 Tower Bldg., 323 Center St. Telephone: (501) 324-9880

City or Town: Little Rock State: AR ZIP: 72201





Berryville Post Office
Berryville, Carroll Co., Arkansas
15/449260/4024320

