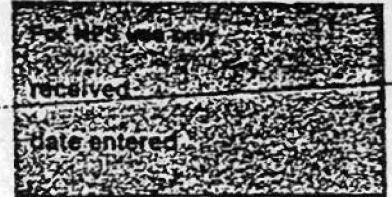


EXP. 12/31/84

United States Department of the Interior
National Park Service

National Register of Historic Places
Inventory—Nomination Form



Continuation sheet 34

Item number 1, 2, 4, 6, & 10 Page 1

INDIVIDUAL DATA SHEET

General Description

Code: CN-009

Congressional District: Second

Name: Coca-Cola Building

Current Owner: City of Morrilton

Address: 211 North Moose
Morrilton, Arkansas

c/o Jane Adams Pickethorn

County: Conway

Address: Morrilton City Hall

210 North Moose

Morrilton, Arkansas 72210

Architectural Information

Architectural Firm: Thompson, Sanders, and Ginocchio

Date of Construction: 1929

Stylistic Influence: Colonial Revival/Art Deco

Original Use: Bottling Plant

Present Use: Morrilton Police Station

Geographical Information

UTM Reference: 15 523410/3889980

Acreage: Less than one

Verbal Boundary Description: Moose Addition

Block 5, All lots 7, 8, 9

Condition

Excellent
 Good
 Fair

Deteriorated
 Ruins
 Unexposed

Unaltered
 Altered

United States Department of the Interior
National Park Service

National Register of Historic Places
Inventory—Nomination Form

Received
Date entered

Continuation sheet

35

Item number 7 & 8

Page 2

Code: CN-009

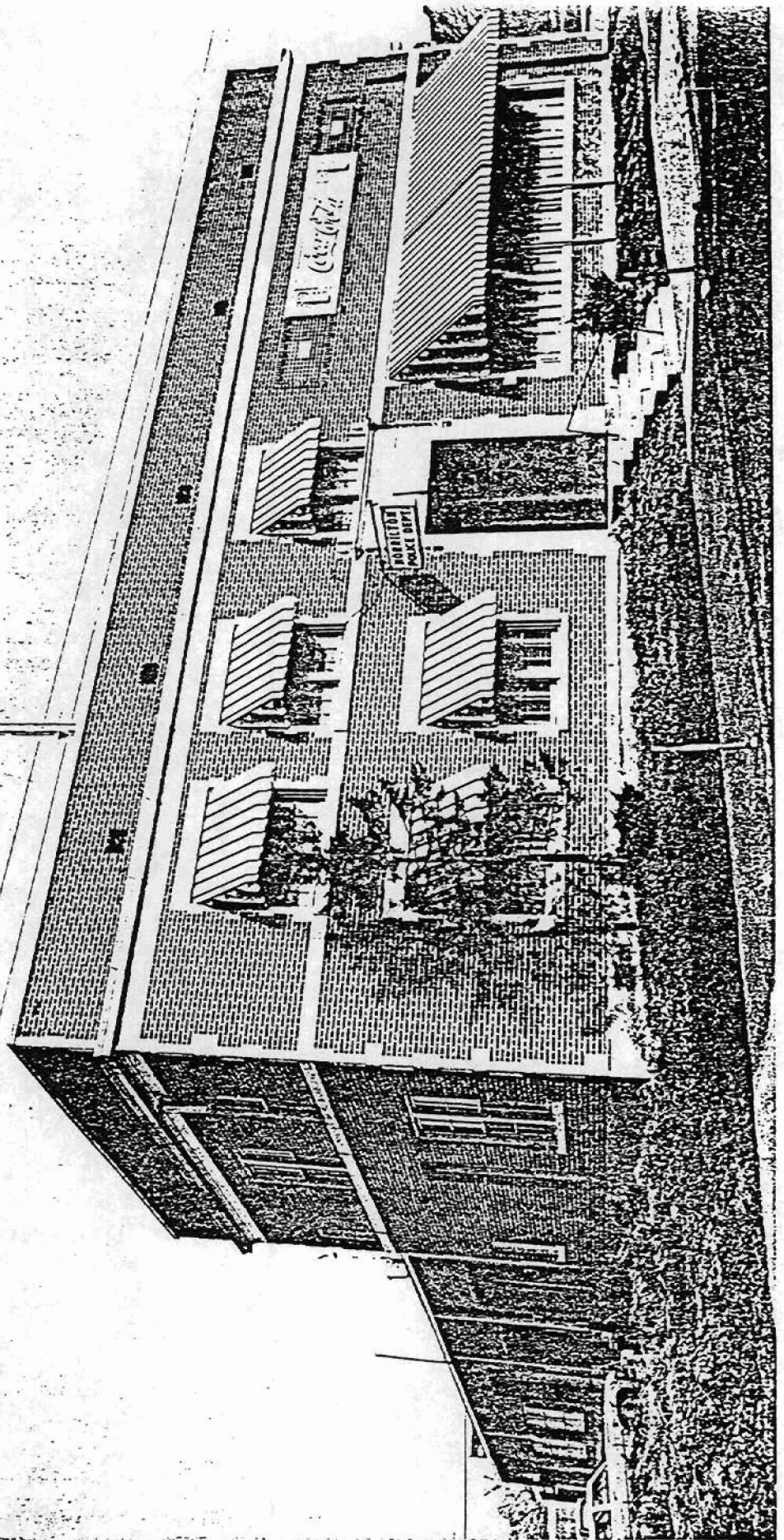
(211 North Moose, Morrilton, AR)

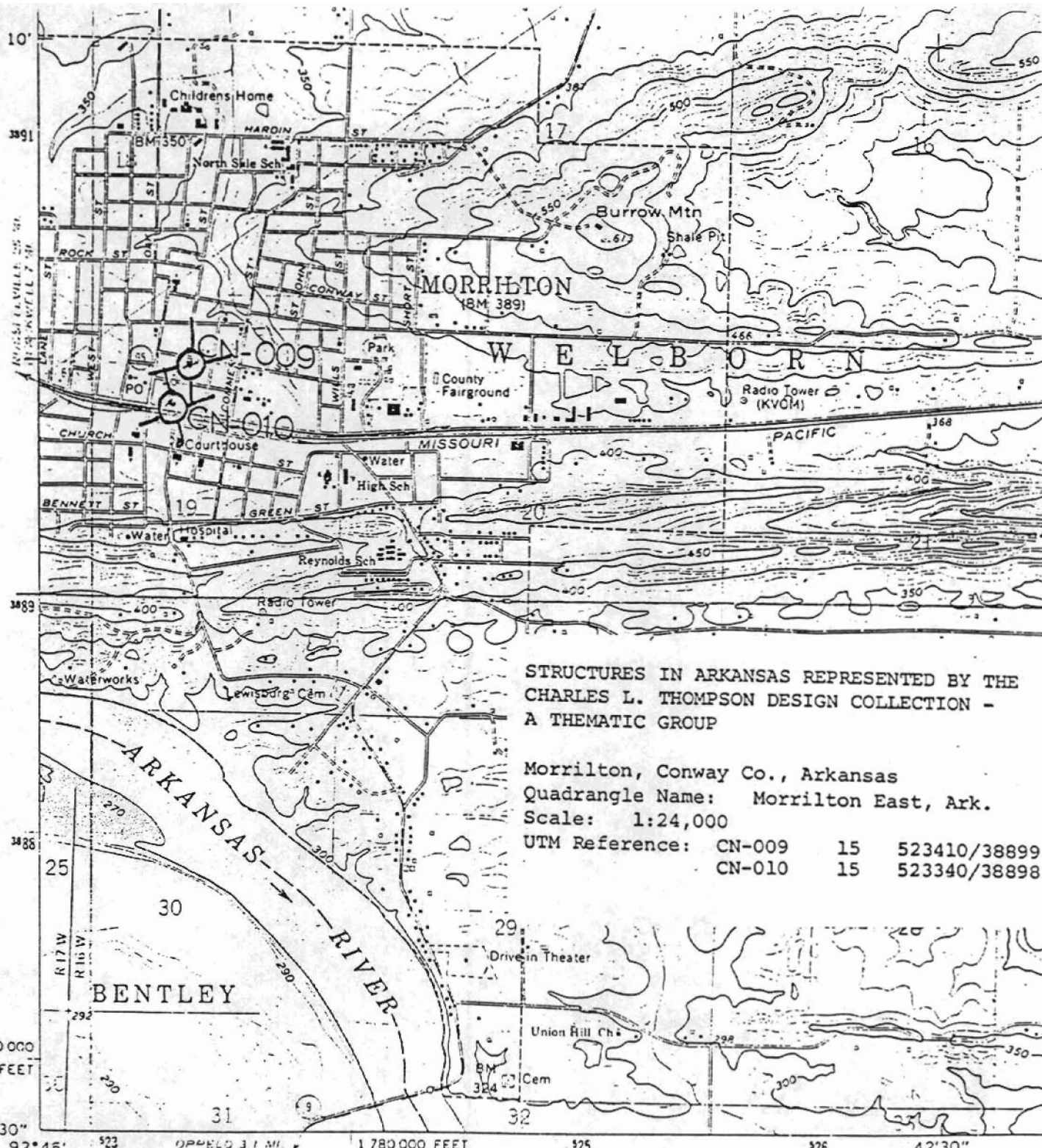
Physical Description

Located just off the main street of downtown Morrilton on a slightly sloping lot, this simple rectangular two-story commercial building is distinguished by fine classical detailing and outstanding Art Deco signage. Constructed of dark red brick laid in Flemish bond accented with cut limestone details, the facade is divided horizontally by stone stringcourses delineating the second story and the simple parapet which has cast stone coping. The deeply recessed entry features a Gibbs surround, hood mold and central stone panel overhead. The paired four-over-four light sash windows also are accented by Gibbs surrounds. A long plate glass window on the first floor is original to the design as is the cut stone "Coca-Cola" sign above it. This sign features "Coca-Cola" in script and is flanked by two images of Coca-Cola bottles against stylized foliage exhibiting an unmistakable Art Deco flair.

Statement of Significance

The Coca-Cola Building in downtown Morrilton, Arkansas, was designed by the architectural firm of Thompson, Sanders and Ginocchio in 1929. The building features unusually fine classical detail in a "streamlined" commercial building. The facade of the red brick structure is divided horizontally by stone stringcourses which delineate the second story and simple parapet. The most significant aspect of the Coca-Cola Building is a cut stone sign on the facade. This sign features "Coca-Cola" in script and is flanked by two images of Coca-Cola bottles against stylized foliage. The sign is distinguished by its definite Art Deco flair. The building is in excellent condition and is now owned by the city.





STRUCTURES IN ARKANSAS REPRESENTED BY THE CHARLES L. THOMPSON DESIGN COLLECTION - A THEMATIC GROUP

Morrilton, Conway Co., Arkansas
 Quadrangle Name: Morrilton East, Ark.
 Scale: 1:24,000
 UTM Reference: CN-009 15 523410/388998
 CN-010 15 523340/388988

35° 07' 30" 92° 45' 523 1780 000 FEET 525 526 42' 30"

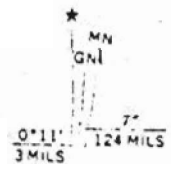
Mapped, edited, and published by the Geological Survey

Control by USGS, USC&GS, and USCE

Topography by photogrammetric methods from aerial photographs taken 1958. Field checked 1961

Polyconic projection. 1927 North American datum
 10,000-foot grid based on Arkansas coordinate system, north zone
 1000-meter Universal Transverse Mercator grid ticks, zone 15, shown in blue

Red tint indicates area in which only landmark buildings are shown
 Fine red dashed lines indicate selected fence and field lines where generally visible on aerial photographs. This information is unchecked



UTM GRID AND 1961 MAGNETIC NORTH DECLINATION AT CENTER OF SHEET

FOR SALE AND

(PERRYVILLE)
 7456 III SE