

NR LISTED 5/28/92

United States Department of the Interior
National Park Service

NATIONAL REGISTER OF HISTORIC PLACES
REGISTRATION FORM

1. Name of Property

historic name: Administration Office

other name/site number: CN0082

2. Location

street & number: State Highway 154

not for publication: N/A

city/town: Winrock

vicinity: X

state: AR

county: Conway

code: AR 029

zip code: 72025

3. Classification

Ownership of Property: Public-state

Category of Property: Building

Number of Resources within Property:

Contributing	Noncontributing
<u>1</u>	_____ buildings
_____	_____ sites
_____	_____ structures
_____	_____ objects
<u>1</u>	<u>0</u> Total

Number of contributing resources previously listed in the National Register: N/A

Name of related multiple property listing: Facilities Constructed by the Civilian Conservation Corps in Arkansas, 1933-1942

4. State/Federal Agency Certification

As the designated authority under the National Historic Preservation Act of 1986, as amended, I hereby certify that this X nomination _____ request for determination of eligibility meets the documentation

=====

7. Description

=====

Architectural Classification:

N/A

Other Description: Rustic Resort

Materials: foundation Cast concrete roof Asphalt
walls Stone other Fieldstone columns
Board and batten

Describe present and historic physical appearance. X See continuation sheet.

=====

8. Statement of Significance

=====

Certifying official has considered the significance of this property in relation to other properties: Locally.

Applicable National Register Criteria: A, C

Criteria Considerations (Exceptions): N/A

Areas of Significance: SOCIAL HISTORY
ARCHITECTURE
ENTERTAINMENT/RECREATION

Period(s) of Significance: 1935-1942 _____

Significant Dates: N/A

Significant Person(s): N/A

Cultural Affiliation: N/A

Architect/Builder: Civilian Conservation Corps

State significance of property, and justify criteria, criteria considerations, and areas and periods of significance noted above. X See continuation sheet.

=====

9. Major Bibliographical References

=====

X See continuation sheet.

Previous documentation on file (NPS):

- preliminary determination of individual listing (36 CFR 67) has been requested.
- previously listed in the National Register
- previously determined eligible by the National Register
- designated a National Historic Landmark
- recorded by Historic American Buildings Survey # _____
- recorded by Historic American Engineering Record # _____

Primary Location of Additional Data:

- State historic preservation office
- Other state agency
- Federal agency
- Local government
- University
- Other -- Specify Repository: _____

=====

10. Geographical Data

=====

Acreage of Property: Less than one

UTM References: Zone Easting Northing Zone Easting Northing

A 15 507370 3886980

___ See continuation sheet.

Verbal Boundary Description: ___ See continuation sheet.

Beginning at a point on the northern edge of State Highway 154 formed by the intersection of said edge with a perpendicular line running parallel with the building's western elevation and located approximately 50 feet to the west thereof, proceed northerly along said line for a distance of 200 feet to its intersection with a perpendicular line running parallel with the building's northern elevation; thence proceed easterly along said line for a distance of 200 feet to its intersection with a perpendicular line running parallel with the building's eastern elevation; thence proceed southerly along said line for a distance of 200 feet to its intersection with a perpendicular line running along the northern edge of State Highway 154; thence proceed westerly along said line for a distance of 200 feet to the point of beginning.

Boundary Justification: ___ See continuation sheet.

This boundary includes both the historic structure and a representative amount of the surrounding property historically-associated with the recreational activities for which this structure was constructed.

=====

11. Form Prepared By

=====

Name/Title: Kenneth Story, Architectural Historian

Organization: Arkansas Historic Preservation Program Date: March 3, 1992

Street & Number: 225 E. Markham, Suite 300 Telephone: (501) 324-9346

City or Town: Little Rock State: AR ZIP: 72201

United States Department of the Interior
National Park ServiceNational Register of Historic Places
Continuation SheetSection number 7 Page 1Administration Office c. 1935

The Administration Office was originally used only as an office, but is now an office and a gift shop. Like the cabins, it was built in the Rustic Resort style. It is a one-story building with a continuous cast-concrete foundation. The floor plan is irregular and there are two rear-projecting sheds and a bay projection on the southern (front) facade. The building is of field-stone masonry construction with a gable roof that is covered in composition shingle. There are two porches and one patio. The first porch covers approximately a quarter of the southern (front) facade and has a gable roof supported by columns of field stone. The second porch is located on the western facade of the building and has a shed roof also supported by columns of field stone. All the stone columns are large on the bottom and gradually taper in diameter towards the top. The stone patio is located on the western side of the building. There are two interior field-stone chimneys; one is located at the back of the front bay projection, and the other is located near the center of the building. Some of the windows are the sliding type with a single pane of glass; the others are stationary with fifteen panes of glass. None of the windows are original and some have been filled in with board and batten. Although the wooden fence is not original, the fence posts themselves are original and are approximately five feet tall and three feet wide.

United States Department of the Interior
National Park Service

National Register of Historic Places Continuation Sheet

Section number 8 Page 1

The land that would comprise Petit Jean State Park was donated to the State of Arkansas in the mid-1920's by individual landowners and sympathetic lumbering concerns as the first step in the formation of a state parks system. The top of Petit Jean Mountain had already been recognized for its scenic splendor, and for its geological wealth and diversity, and so seemed a particularly worthy site. The initial plan of these citizens was to turn the entire site over to the federal government for the establishment of a national park; however, after considerable study, National Park Service officials determined that Petit Jean Mountain was not a unique natural resource when evaluated on a national basis, and thus declined to assume ownership. Yet these same officials strongly encouraged the state to preserve and maintain the site as an important representation of Arkansas's natural heritage, and in 1923, the Arkansas Legislature passed Act 276 authorizing the Commissioner of State Lands to accept land donations for state parks and reservations. Thus began the Arkansas State Parks system, with Petit Jean State Park as its flagship.

The Administration Office was constructed c. 1935 at Petit Jean State Park by the men of the 1781st Company of the Civilian Conservation Corps, Arkansas District, stationed at Morrilton, Arkansas as an administrative building to be used by the park's staff for the management and administration of the park. This facility was constructed by the CCC as part of the overall plan to develop this part of the mountain as a public park to be administered by the state of Arkansas.

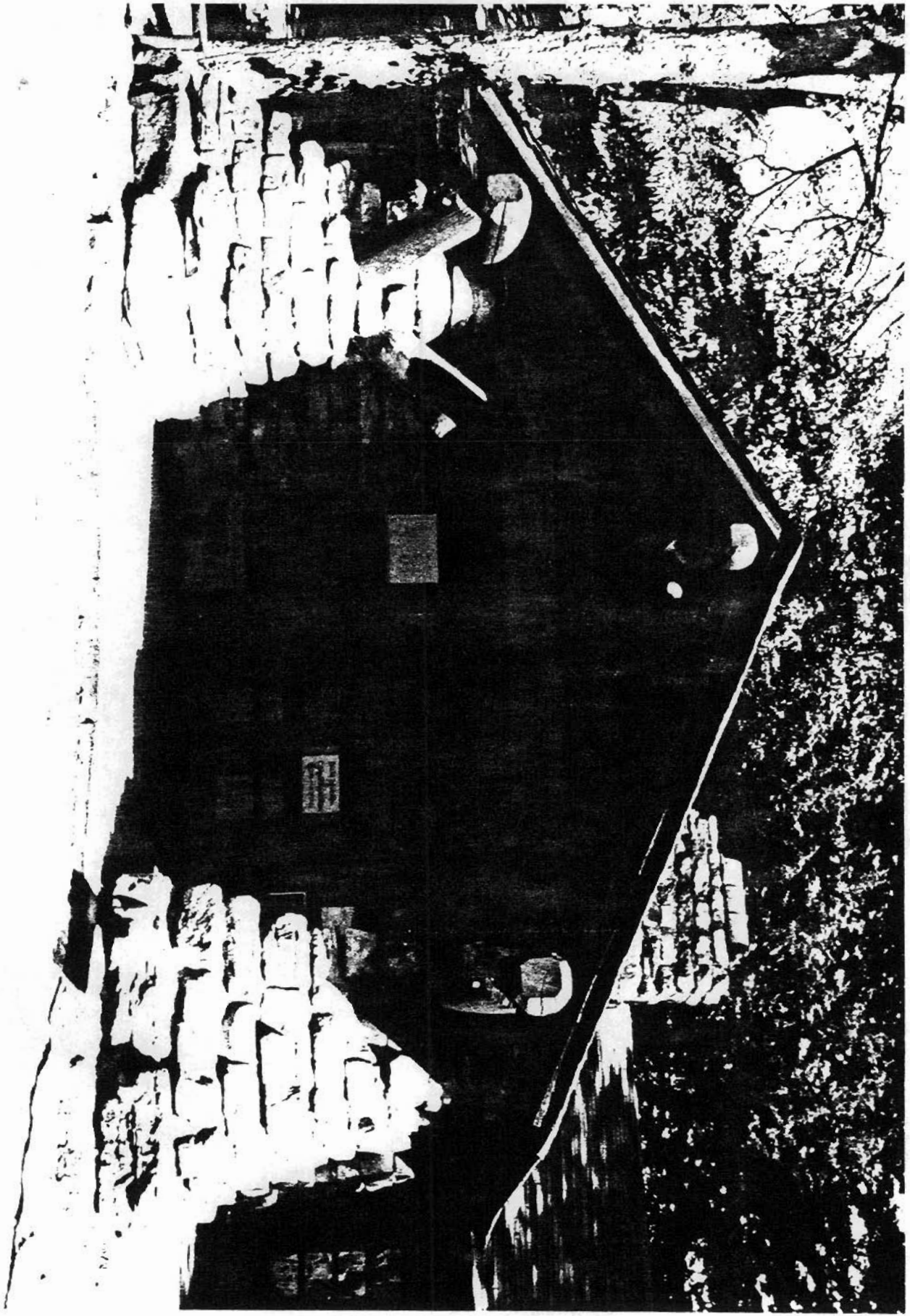
This building was erected at Petit Jean State Park by the men of the Civilian Conservation Corps for the purpose of providing office space for park staff, and was intended to be used for the management and maintenance of the park. Thus the Administration Office is eligible under Criterion A for its associations with both the Civilian Conservation Corps' importance within Arkansas social history and its role in the development of outdoor parks dedicated to public leisure and recreational activities. It is also eligible under Criterion C due to its status as a representative and intact example of the Rustic style of architecture that was made popular nationwide by the CCC, and which has since become virtually identified with it.

**United States Department of the Interior
National Park Service**

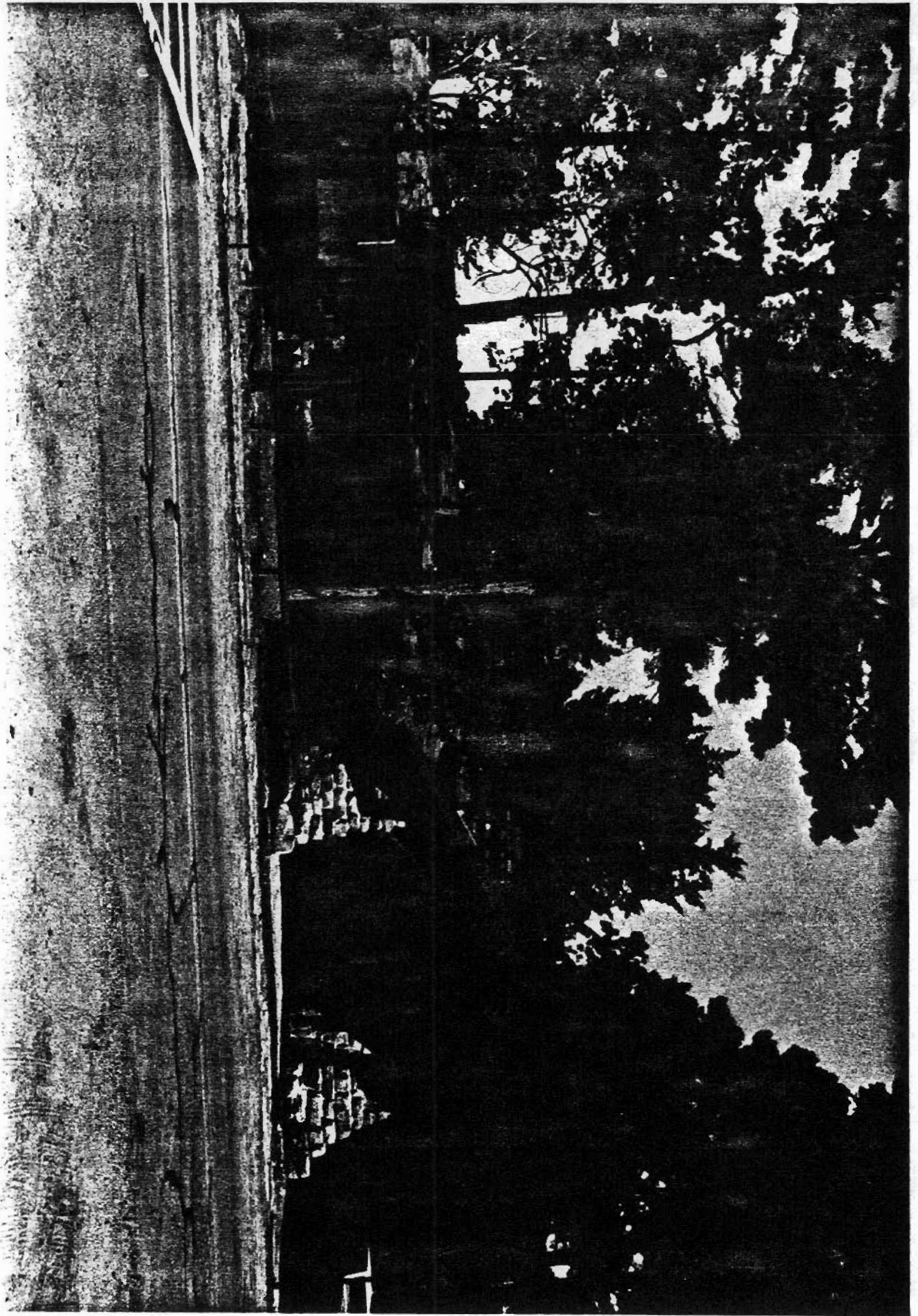
**National Register of Historic Places
Continuation Sheet**

Section number 9 Page 1

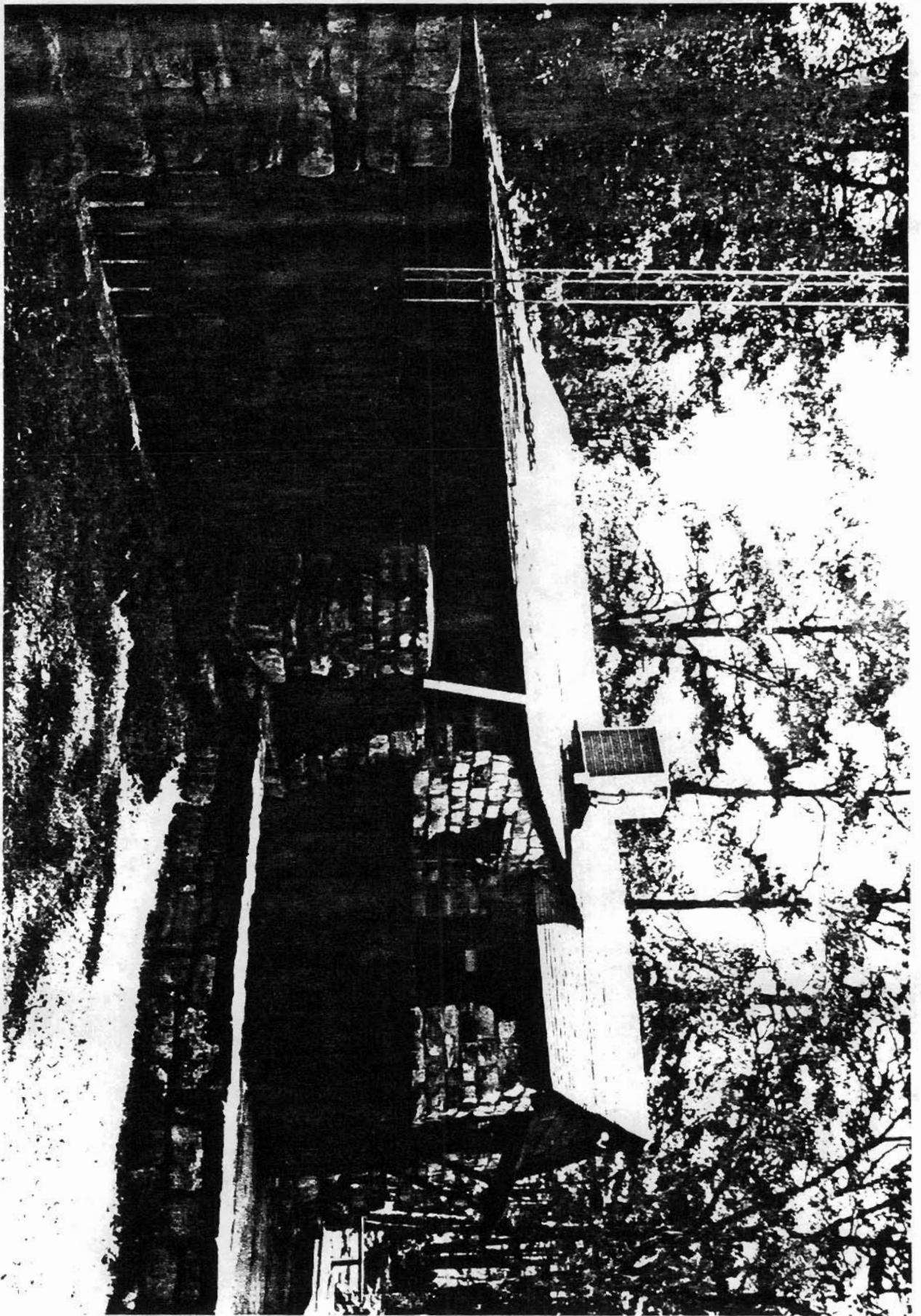
See "Recreational Facilities Constructed by the Civilian Conservation Corps in Arkansas, 1933-1942," Section H.



Administration Office
P.O. Box 1000
Albuquerque, New Mexico
Photocopied by V. D. Rose
October, 1989
1161 1st Ave. N.E.
Fort Worth



Don't know what
part of the map, this
is. It is in the
middle of the map
(Crosby, 1989)
Measure Do Fine at 1990
also from 1990



Memorandum to
Ft Pitt Ven Staff June
Landscape in the
vicinity of Ft Pitt Ven
October, 1989
NEGATIVE ON FILE IN
VIEW FROM NORTHWEST