

United States Department of the Interior
National Park Service

NATIONAL REGISTER OF HISTORIC PLACES
REGISTRATION FORM

1. Name of Property

historic name: Cabin #9

other name/site number: CN0061

2. Location

street & number: Petit Jean State Park Campground Access Road

not for publication: N/A

city/town: Winrock

vicinity: X

state: AR county: Conway code: AR 029 zip code: 72025

3. Classification

Ownership of Property: Public-state

Category of Property: Building

Number of Resources within Property:

Contributing	Noncontributing	
<u>1</u>	<u> </u>	buildings
<u> </u>	<u> </u>	sites
<u> </u>	<u> </u>	structures
<u> </u>	<u> </u>	objects
<u>1</u>	<u>0</u>	Total

Number of contributing resources previously listed in the National Register: N/A

Name of related multiple property listing: Facilities Constructed by the Civilian Conservation Corps in Arkansas, 1933-1942

State/Federal Agency Certification

As the designated authority under the National Historic Preservation Act of 1986, as amended, I hereby certify that this X nomination request for determination of eligibility meets the documentation

=====

7. Description

=====

Architectural Classification:

N/A

Other Description: Rustic Resort

Materials: foundation Stone roof Asphalt
walls Stone other Wood weatherboarding

Describe present and historic physical appearance. X See continuation sheet.

=====

8. Statement of Significance

=====

Certifying official has considered the significance of this property in relation to other properties: Locally.

Applicable National Register Criteria: A, C

Criteria Considerations (Exceptions): N/A

Areas of Significance: SOCIAL HISTORY
ARCHITECTURE
ENTERTAINMENT/RECREATION

Period(s) of Significance: 1935-1942

Significant Dates: N/A

Significant Person(s): N/A

Cultural Affiliation: N/A

Architect/Builder: Civilian Conservation Corps

State significance of property, and justify criteria, criteria considerations, and areas and periods of significance noted above.
X See continuation sheet.

9. Major Bibliographical References

X See continuation sheet.

Previous documentation on file (NPS):

- preliminary determination of individual listing (36 CFR 67) has been requested.
- previously listed in the National Register
- previously determined eligible by the National Register
- designated a National Historic Landmark
- recorded by Historic American Buildings Survey # _____
- recorded by Historic American Engineering Record # _____

Primary Location of Additional Data:

- State historic preservation office
- Other state agency
- Federal agency
- Local government
- University
- Other -- Specify Repository: _____

10. Geographical Data

Acreage of Property: Less than one

UTM References: Zone Easting Northing Zone Easting Northing

A 15 505580 3886030

 See continuation sheet.

Verbal Boundary Description: See continuation sheet.

Beginning at a point on the northern edge of the Petit Jean State Park campground access road formed by the intersection of said edge with a perpendicular line running parallel with Cabin #9's western elevation and located approximately 50 feet to the west thereof, proceed northerly along said line for a distance of 150 feet, to its intersection with a perpendicular line running parallel with Cabin #9's northern elevation; thence proceed easterly along said line for a distance of 150 feet to its intersection with a perpendicular line running parallel with Cabin #9's eastern elevation; thence proceed southerly along said line for a distance of 150 feet to its intersection with a perpendicular line running along the northern edge of the Petit Jean State Park campground access road; thence proceed westerly along said line for a distance of 150 feet to the point of beginning.

Boundary Justification: See continuation sheet.

This boundary includes both the historic structure and a representative amount of the surrounding property historically-associated with the

recreational activities for which this structure was constructed.

=====

11. Form Prepared By

=====

Name/Title: Kenneth Story, Architectural Historian

Organization: Arkansas Historic Preservation Program Date: March 3, 1992

Street & Number: 225 E. Markham, Suite 300 Telephone: (501) 324-9346

City or Town: Little Rock State: AR ZIP: 72201

**United States Department of the Interior
National Park Service**

**National Register of Historic Places
Continuation Sheet**

Section number 7 Page 1

Cabin #9 c. 1935

Cabin #9 is of field-stone masonry construction in the Rustic Resort style. This one-story, rectangular cabin has a continuous field-stone foundation. Unlike cabins #1 and #6, the wall material is a combination of weatherboard and field stone. The combination gable and hipped roof is covered in composition shingle. An exterior field-stone chimney is located centrally in the east half of the cabin.

The one porch is located on the northern (front) facade. The gable porch roof is supported by columns of field stone and a set of stone stairs leads up to it. The windows are double-hung with a two-over-two pane arrangement; however, none of the windows are original and are partially filled in with weatherboard. Located just east of the cabin is a square cookpit of field-stone masonry construction.

**United States Department of the Interior
National Park Service**

**National Register of Historic Places
Continuation Sheet**

Section number 8 Page 1

The land that would comprise Petit Jean State Park was donated to the State of Arkansas in the mid-1920's by individual landowners and sympathetic lumbering concerns as the first step in the formation of a state parks system. The top of Petit Jean Mountain had already been recognized for its scenic splendor, and for its geological wealth and diversity, and so seemed a particularly worthy site. The initial plan of these citizens was to turn the entire site over to the federal government for the establishment of a national park; however, after considerable study, National Park Service officials determined that Petit Jean Mountain was not a unique natural resource when evaluated on a national basis, and thus declined to assume ownership. Yet these same officials strongly encouraged the state to preserve and maintain the site as an important representation of Arkansas's natural heritage, and in 1923, the Arkansas Legislature passed Act 276 authorizing the Commissioner of State Lands to accept land donations for state parks and reservations. Thus began the Arkansas State Parks system, with Petit Jean State Park as its flagship.

Cabin #9 was constructed c. 1935 at Petit Jean State Park by the men of the 1781st Company of the Civilian Conservation Corps, Arkansas District, stationed at Morrilton, Arkansas as a temporary residential building to be used by the park's visitors for overnight accommodations. This facility was constructed by the CCC as part of the overall plan to develop this part of the mountain as a public park to be administered by the state of Arkansas.

This building was erected at Petit Jean State Park by the men of the Civilian Conservation Corps for the purpose of overnight accommodations for park visitors, and was intended to serve those visitors by providing comfortable, modern facilities to enhance the quality of their stay. Thus Cabin #9 is eligible under Criterion A for its associations with both the Civilian Conservation Corps' importance within Arkansas social history and its role in the development of outdoor parks dedicated to public leisure and recreational activities. It is also eligible under Criterion C due to its status as a representative and intact example of the Rustic style of architecture that was made popular nationwide by the CCC, and which has since become virtually identified with it.

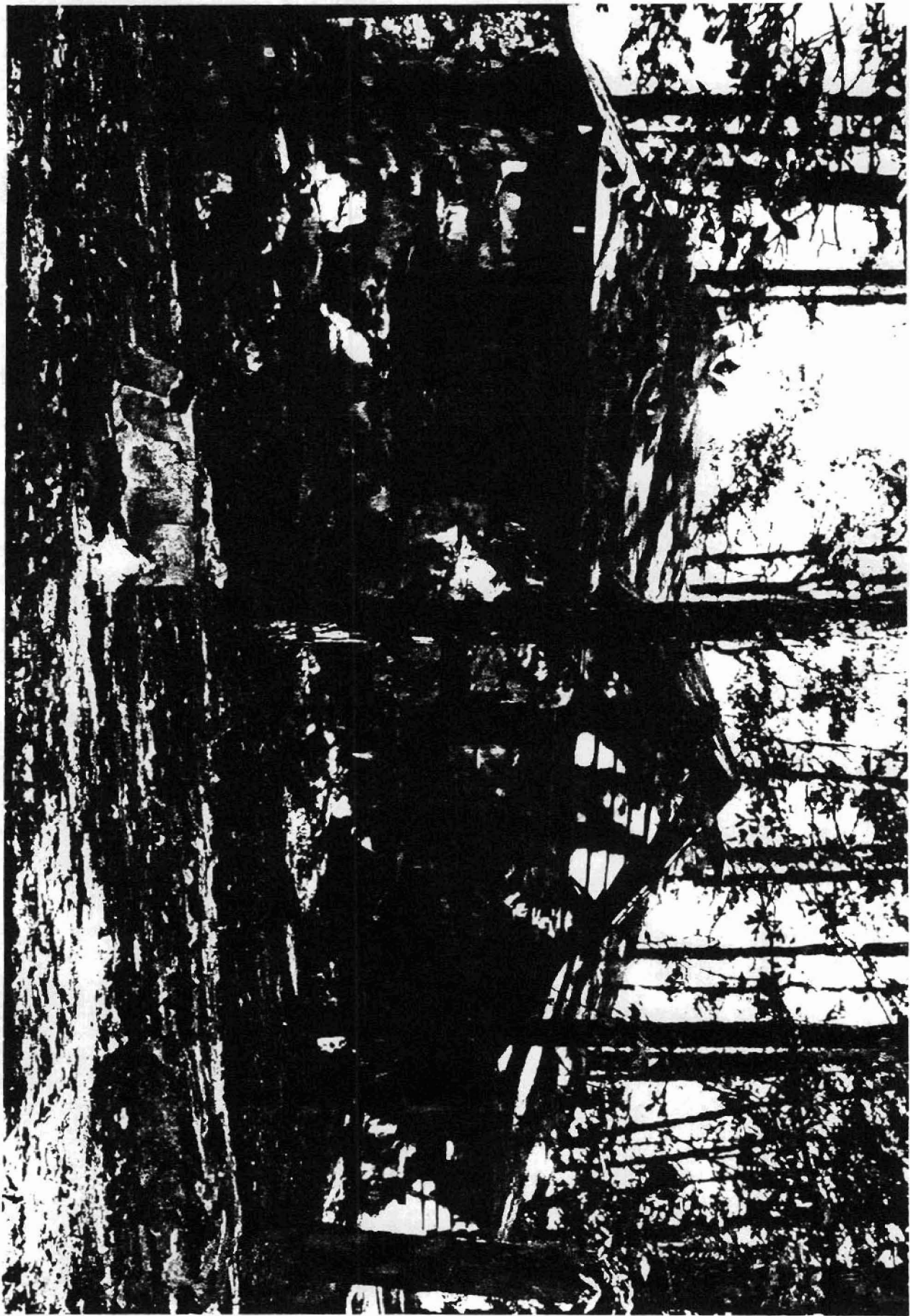
United States Department of the Interior
National Park Service

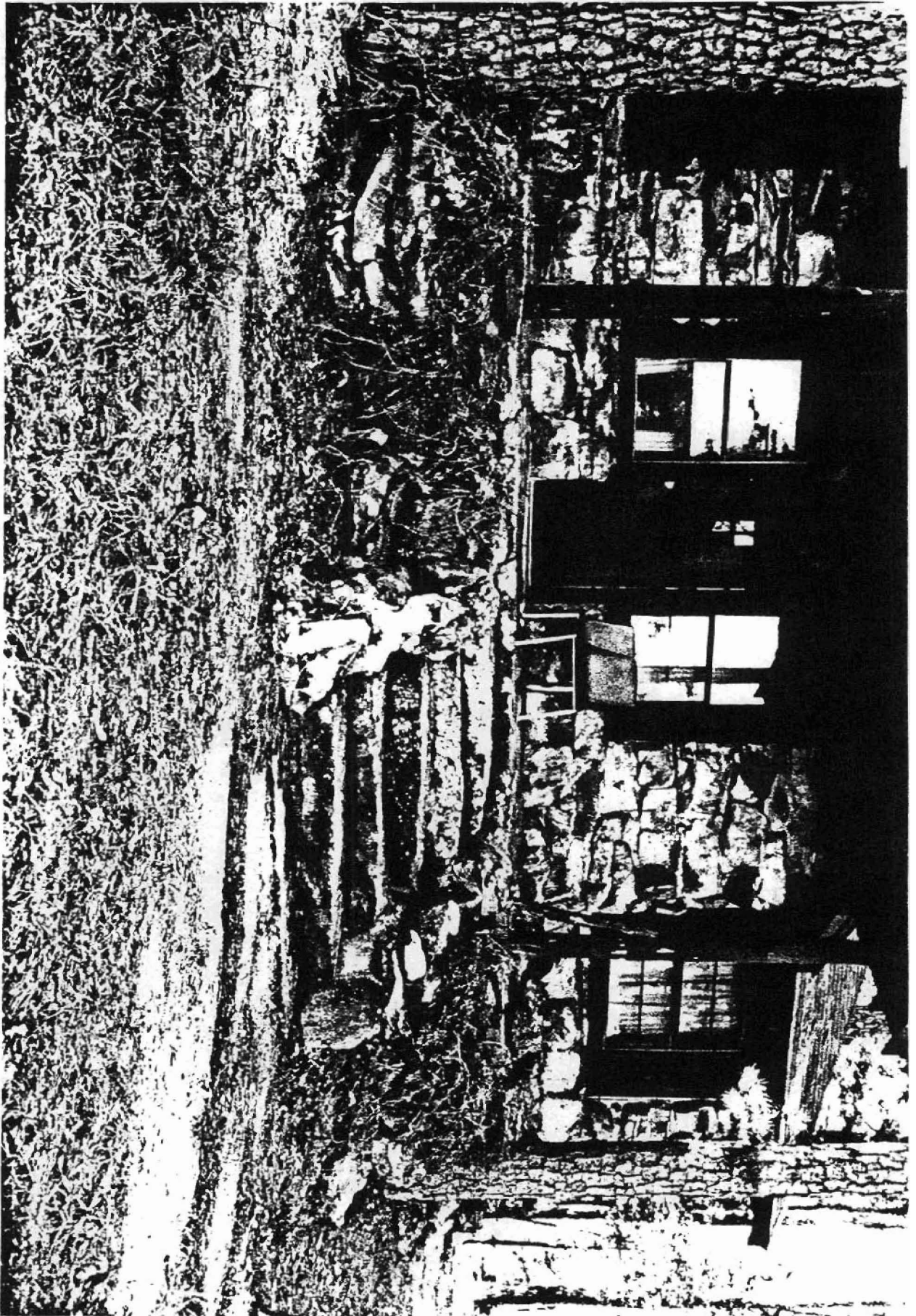
National Register of Historic Places

Continuation Sheet

Section number 9 Page 1

See "Recreational Facilities Constructed by the Civilian Conservation Corps in Arkansas, 1933-1942," Section H.





CABIN "9"

W. H. V. ...

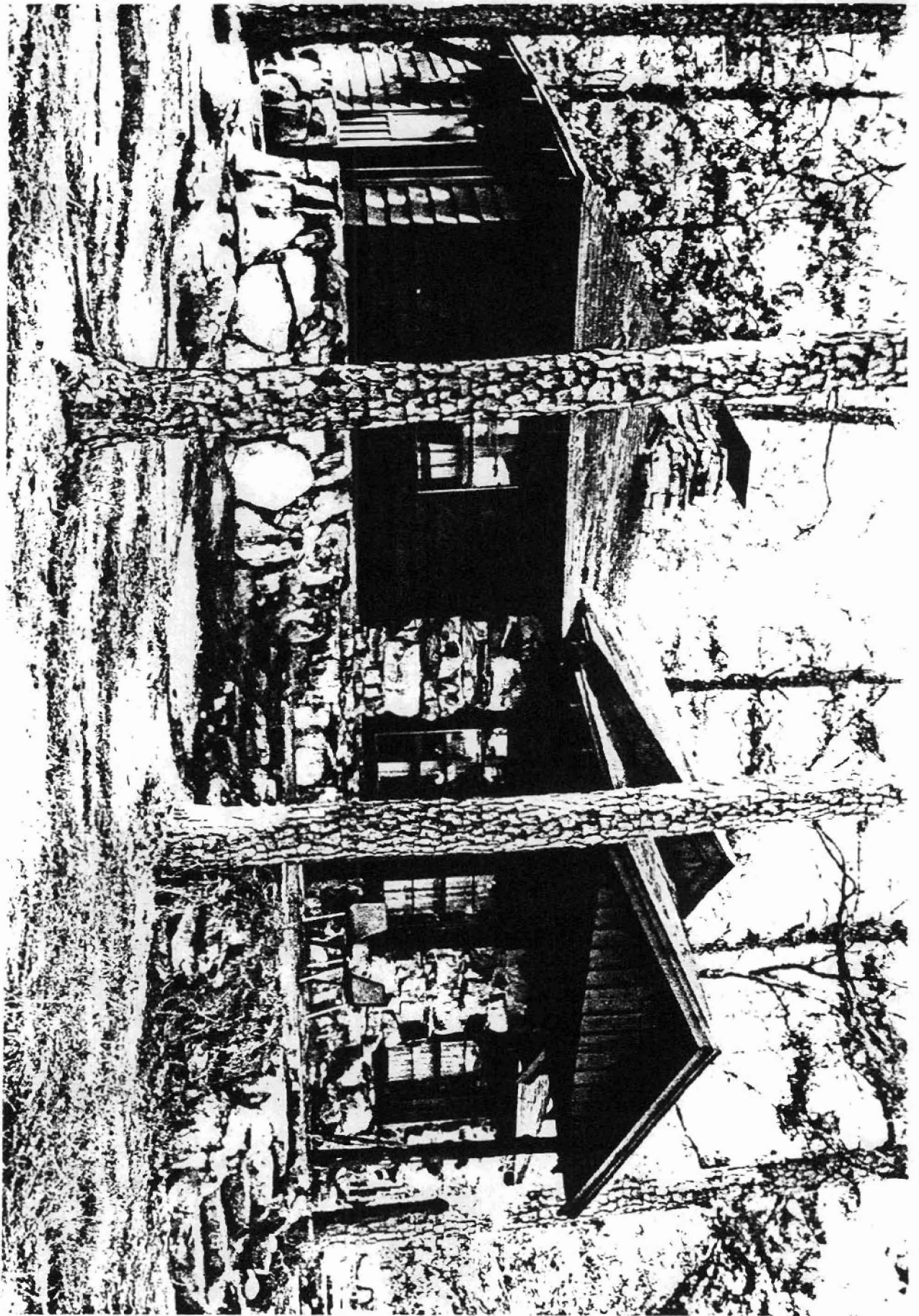
... ..

... ..

... ..

... ..

... ..



Canon # 9

White Mt. 1989

White Mt. 1989

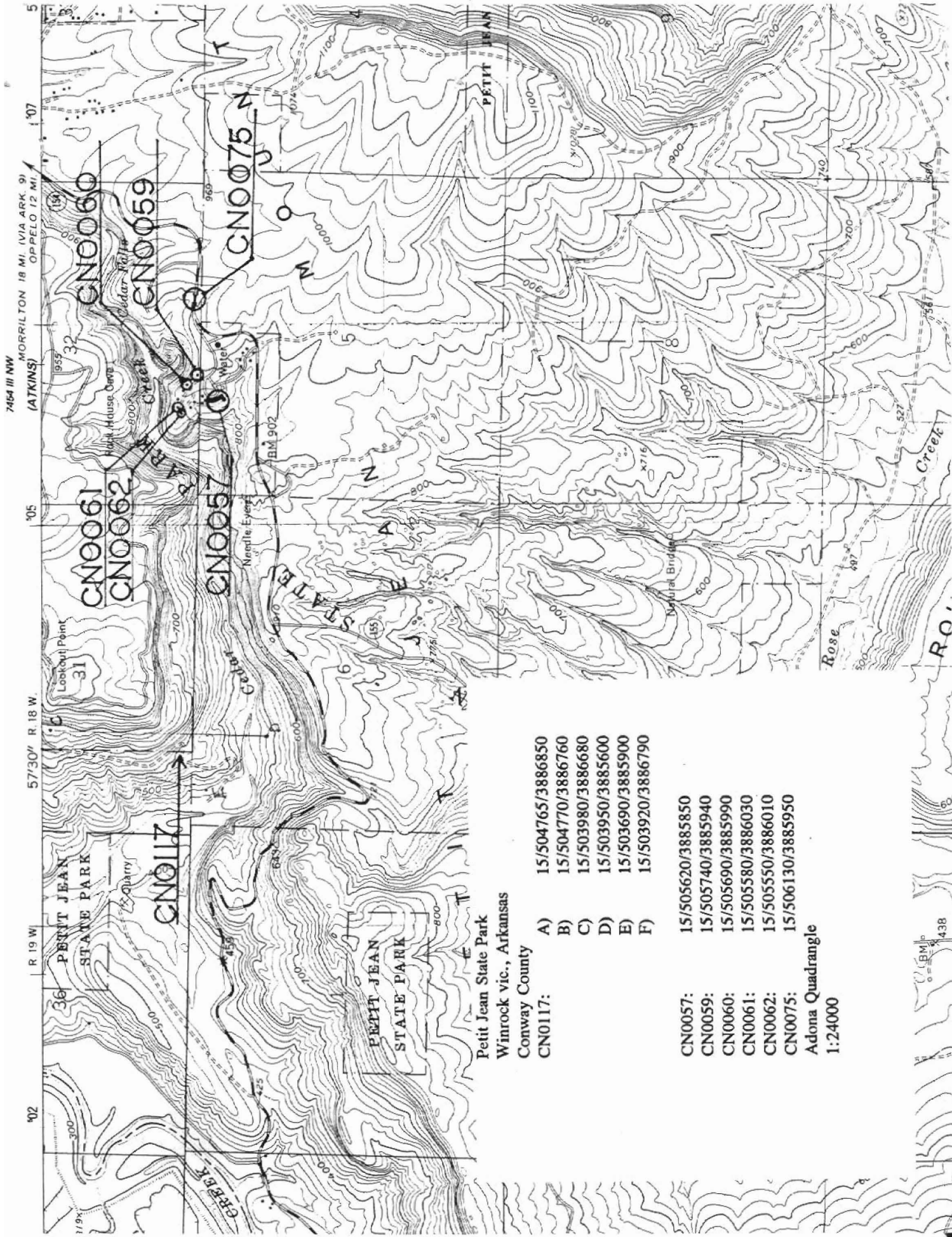
White Mt. 1989

White Mt. 1989

White Mt. 1989

White Mt. 1989

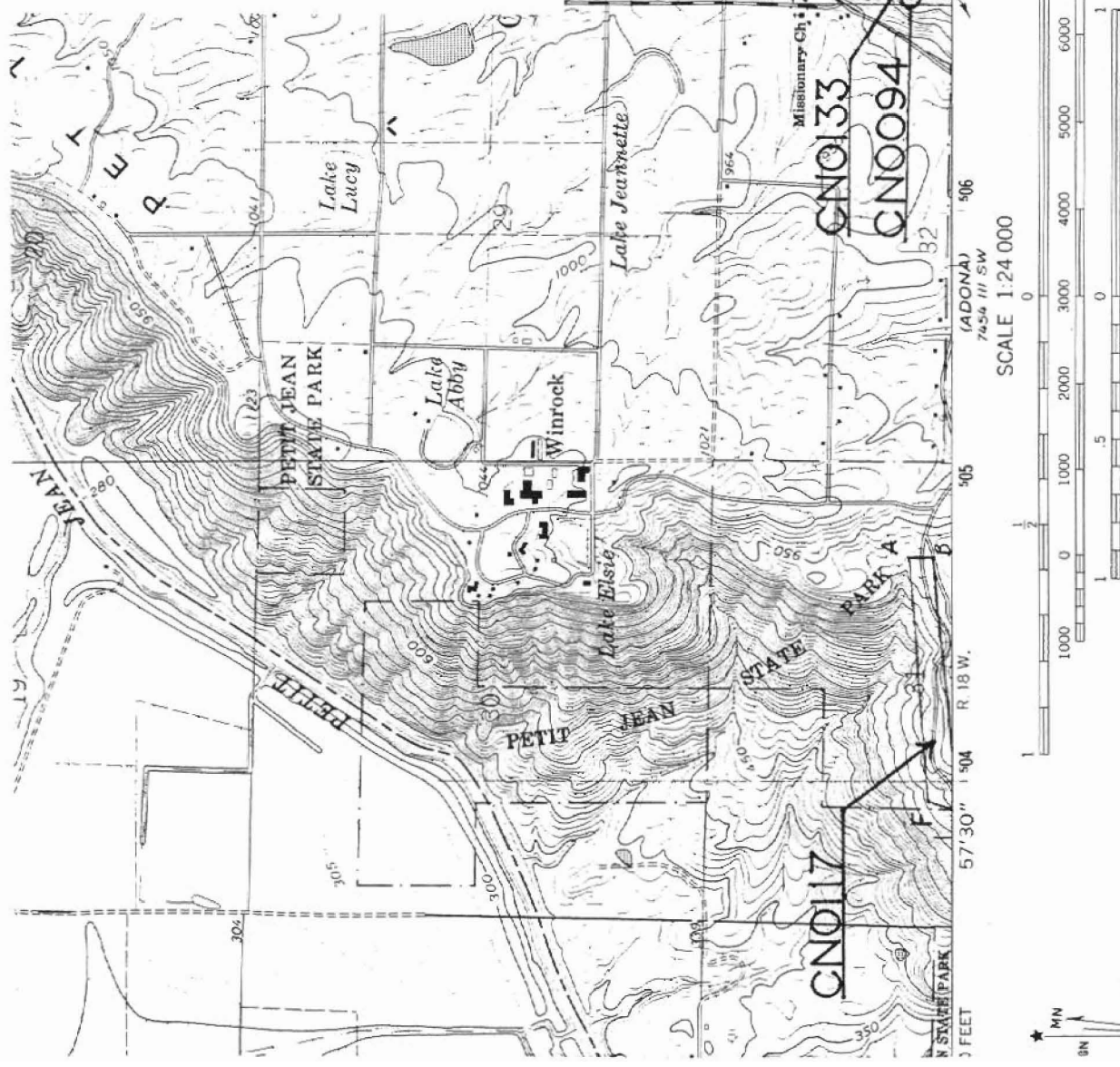




- B) 15/508640/3887C
- C) 15/507260/3887.
- D) 15/506820/388698.
- E) 15/506830/3887090
- F) 15/507410/3887680

- CN0117:
- A) 15/504765/3886850
 - B) 15/504770/3886760
 - C) 15/503980/3886680
 - D) 15/503950/3885600
 - E) 15/503690/3885900
 - F) 15/503920/3886790

- CN0082:
- 15/507370/3886980
 - CN0083: 15/507080/3886750
 - CN0094: 15/506730/3886850
 - CN0133: 15/506860/3886840
- Atkins Quadrangle
1:24000



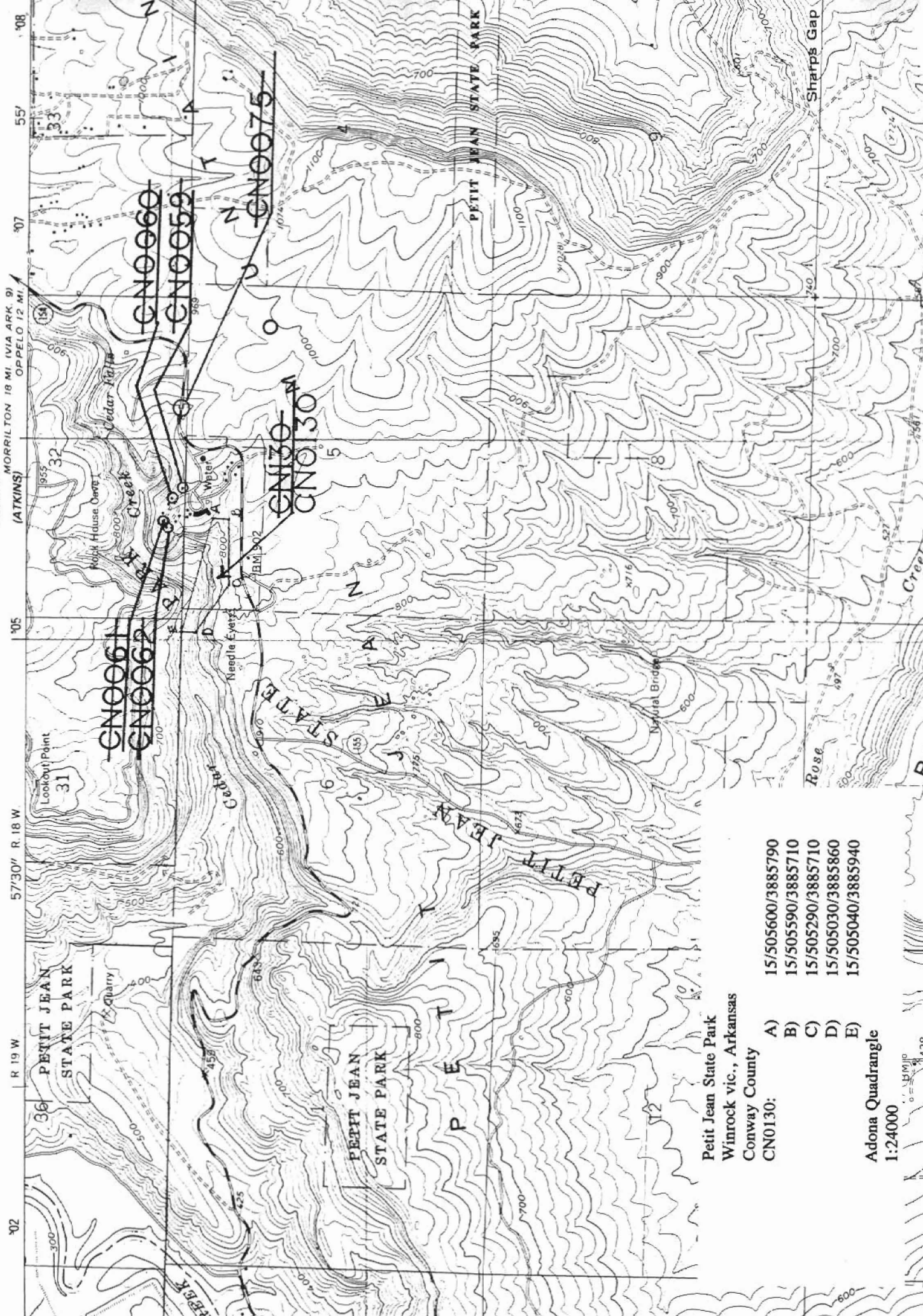
1979 MAGNETIC NORTH
OF CENTER OF SHEET

51° 98 MILS

THIS MAP COMPLIES WITH NATIONAL MAP ACCURACY STANDARDS
FOR SALE BY U. S. GEOLOGICAL SURVEY, DENVER, COLORADO 80225, OR RESTON, VIRGINIA 22092
AND ARKANSAS GEOLOGICAL COMMISSION, LITTLE ROCK, ARKANSAS 72204
A FOLDER DESCRIBING TOPOGRAPHIC MAPS AND SYMBOLS IS AVAILABLE ON REQUEST



7454 III NW MORRILTON 18 MI (VIA ARK. 9)
(ATKINS) OPPELO 12 MI



57°30' R. 18 W

55' 508

507

505

502

501

500

499

498

497

496

495

494

493

492

491

490

489

488

R 19 W

508

507

505

502

501

500

499

498

497

496

495

494

493

492

491

490

489

488

508

507

505

502

501

500

499

498

497

496

495

494

493

492

491

490

489

488

508

507

505

502

501

500

499

498

497

496

495

494

493

492

491

490

489

488

508

507

505

502

501

500

499

498

497

496

495

494

493

492

491

490

489

488

508

507

505

502

501

500

499

498

497

496

495

494

493

492

491

490

489

488

508

507

505

502

501

500

499

498

497

496

495

494

493

492

491

490

489

488

508

507

505

502

501

500

499

498

497

496

495

494

493

492

491

490

489

488

508

507

505

502

501

500

499

498

497

496

495

494

493

492

491

490

489

488

508

507

505

502

501

500

499

498

497

496

495

494

493

492

491

490

489

488

508

507

505

502

501

500

499

498

497

496

495

494

493

492

491

490

489

488

508

507

505

502

501

500

499

498

497

496

495

494

493

492

491

490

489

488

508

507

505

502

501

500

499

498

497

496

495

494

493

492

491

490

489

488

508

507

505

502

501

500

499

498

497

496

495

494

493

492

491

490

489

488

508

507

505

502

501

500

499

498

497

496

495

494

493

492

491

490

489

488

508

507

505

502

501

500

499

498

497

496

495

494

493

492

491

490

489

488

508

507

505

502

501

500

499

498

497

496

495

494

493

492

491

490

489

488

508

507

505

502

501

500

499

498

497

496

495

494

493

492

491

